

DIST.	COUNTY	ROUTE	POST MILES	SHEET No.	TOTAL SHEETS
07	LA	165	0.0/0.8	1	4

STATE OF CALIFORNIA
 TRANSPORTATION AGENCY
 DEPARTMENT OF PUBLIC WORKS
 DIVISION OF HIGHWAYS

W. H. H. H.
 DEPUTY DISTRICT ENGINEER
 DATE *Dec 16, 1965*

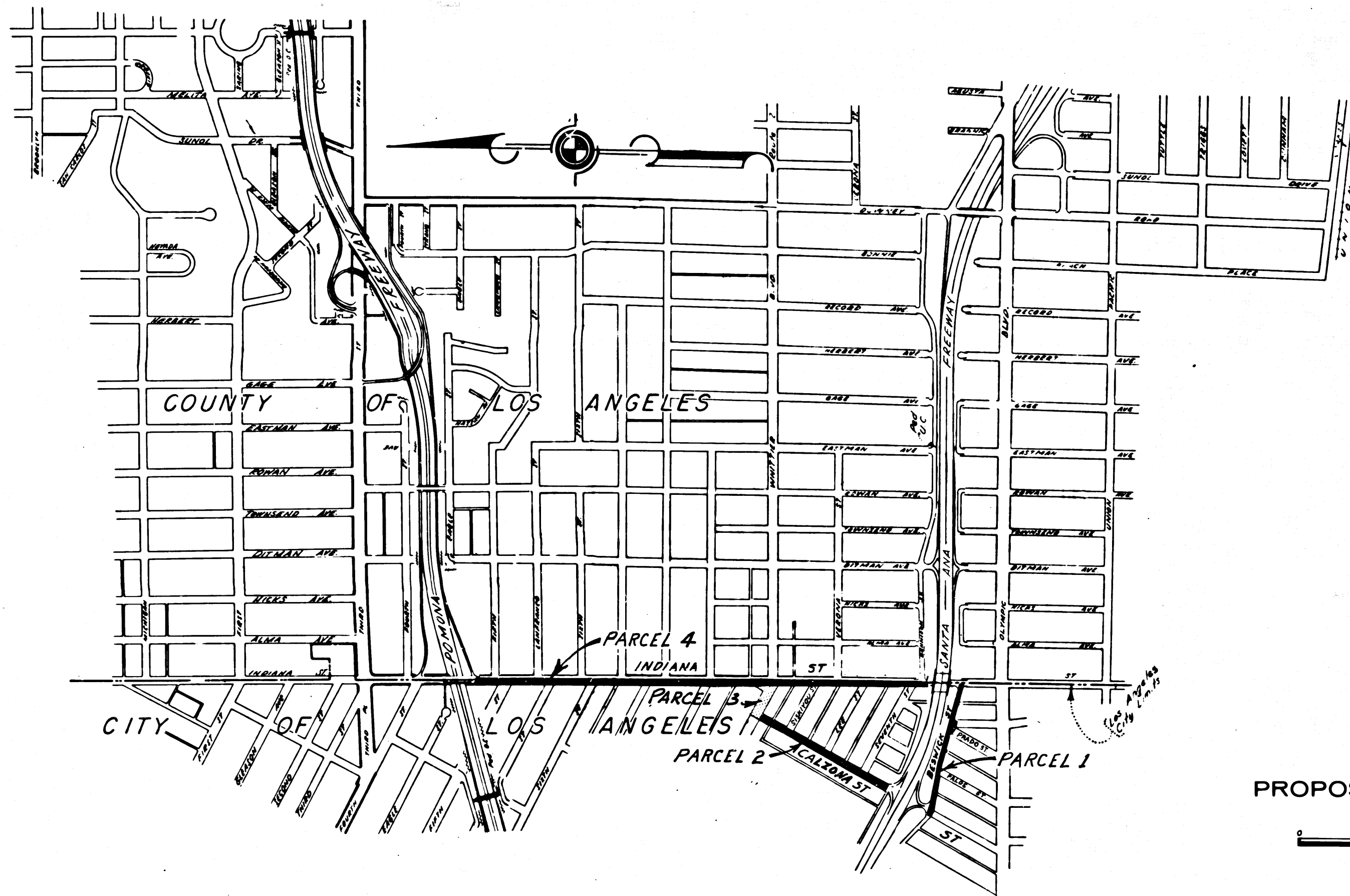
2469

RECORDED
 AT REQUEST OF
 DEPT. OF PUBLIC WORKS
 DEC. 22, 1965
 34 MIN. PAST 9 A.M.

IN BOOK 3
 AT PAGE 23
 OF STATE HIGHWAY MAPS
 LOS ANGELES COUNTY, CALIF.
 RAY E. LEE
 COUNTY RECORDER
 BY *[Signature]* FREE

RIGHT OF WAY MAPS OF
STATE HIGHWAY

In the City of Los Angeles between Route 5 and Route 60.

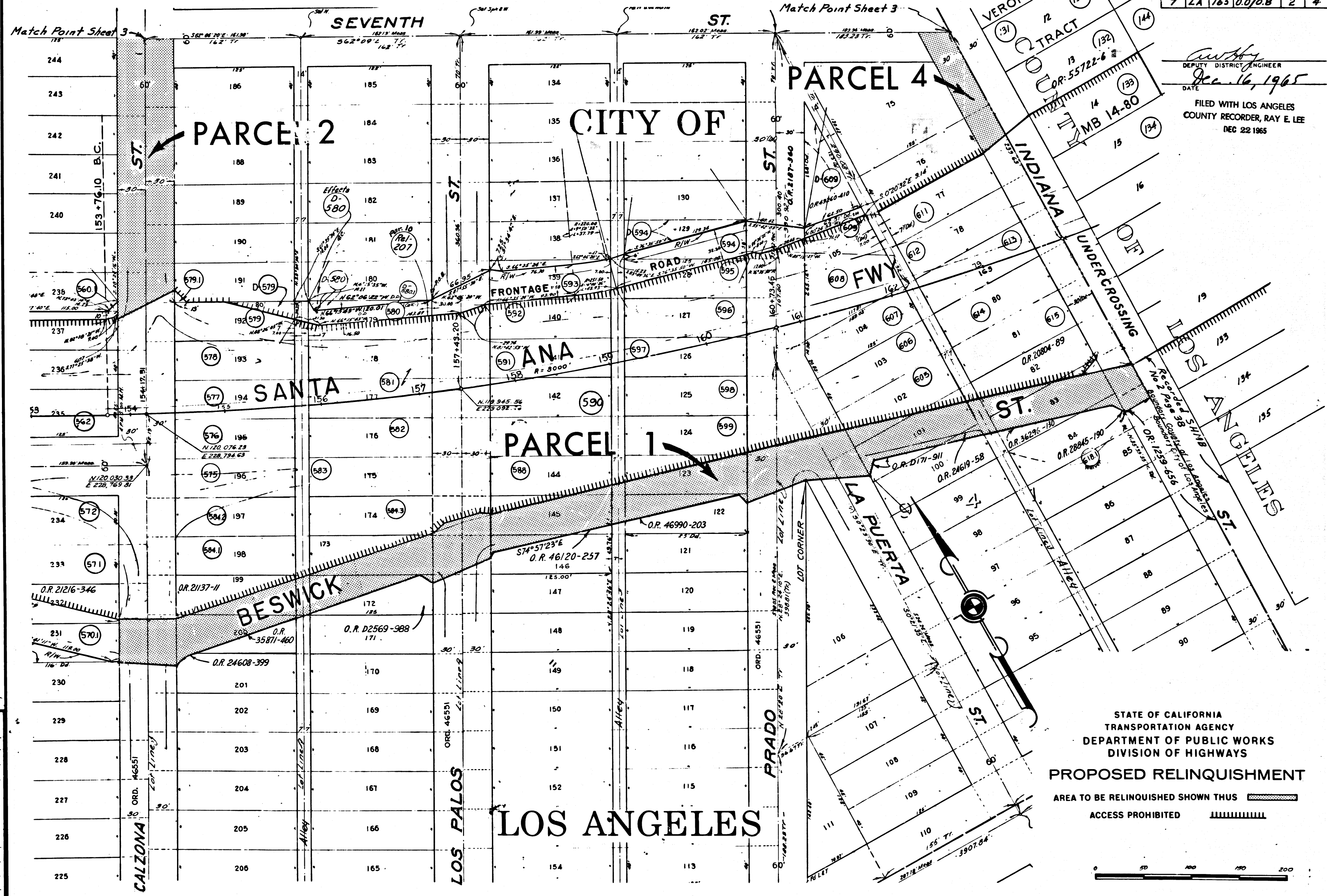


PROPOSED RELINQUISHMENT



REL-447
 DRYN BY BJK
 C/LC BY
 CKD BY F.M.
 BASE MAP NOS
 F1778 F1779
 F2011 F2012
 REF. MAP NOS
 AS BUILT NOS

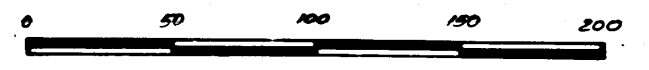
323
 934



DEPUTY DISTRICT ENGINEER
 DATE Dec. 16, 1965
 FILED WITH LOS ANGELES COUNTY RECORDER, RAY E. LEE
 DEC 22 1965

REL-447
 DRN BY BJK
 C.L.C. BY
 CKD BY EM
 BASE MAP NO'S F2011 F2012
 REF. MAP NO'S
 AS BUILT NO'S

STATE OF CALIFORNIA
 TRANSPORTATION AGENCY
 DEPARTMENT OF PUBLIC WORKS
 DIVISION OF HIGHWAYS
PROPOSED RELINQUISHMENT
 AREA TO BE RELINQUISHED SHOWN THUS [shaded area symbol]
 ACCESS PROHIBITED [hatched area symbol]

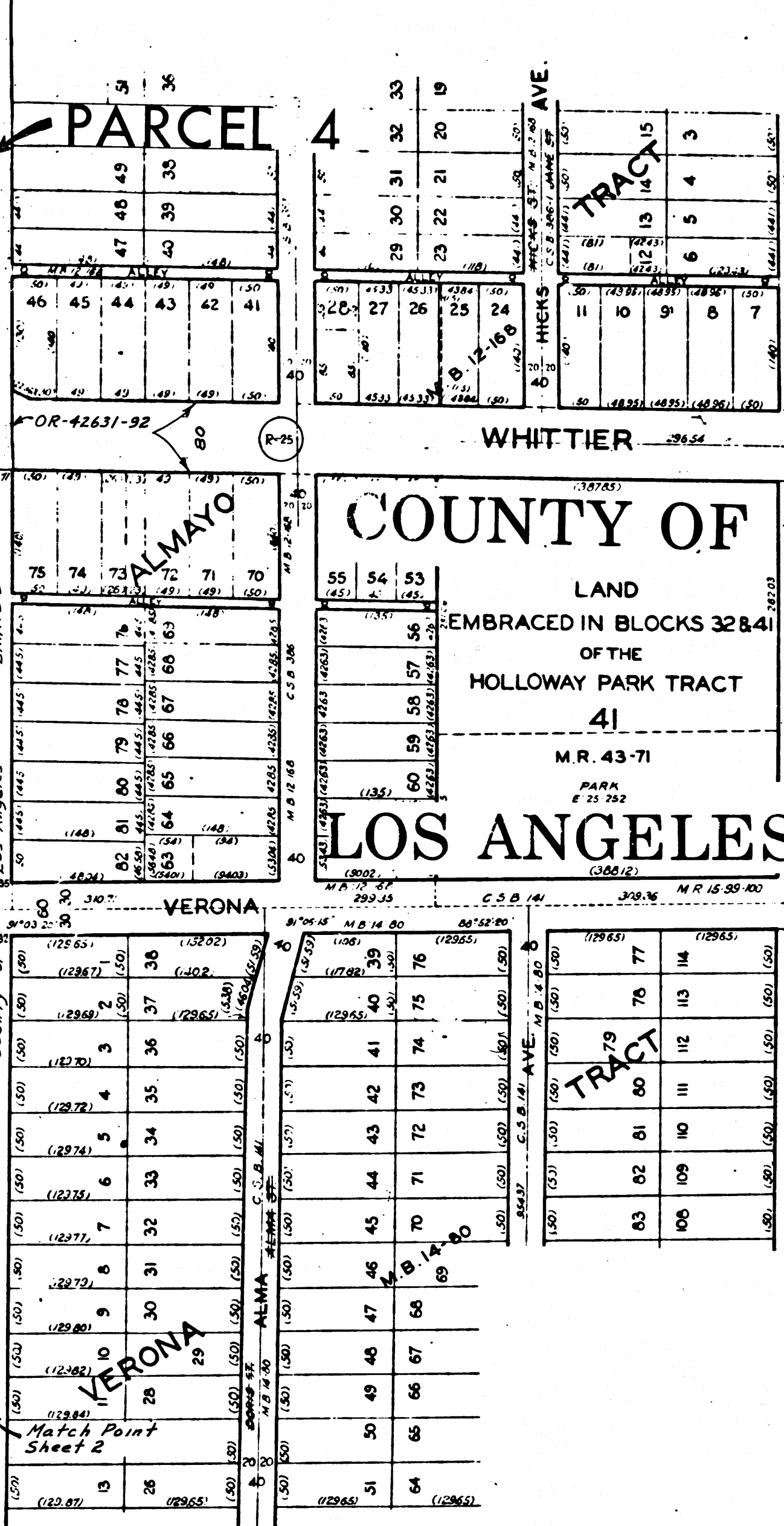
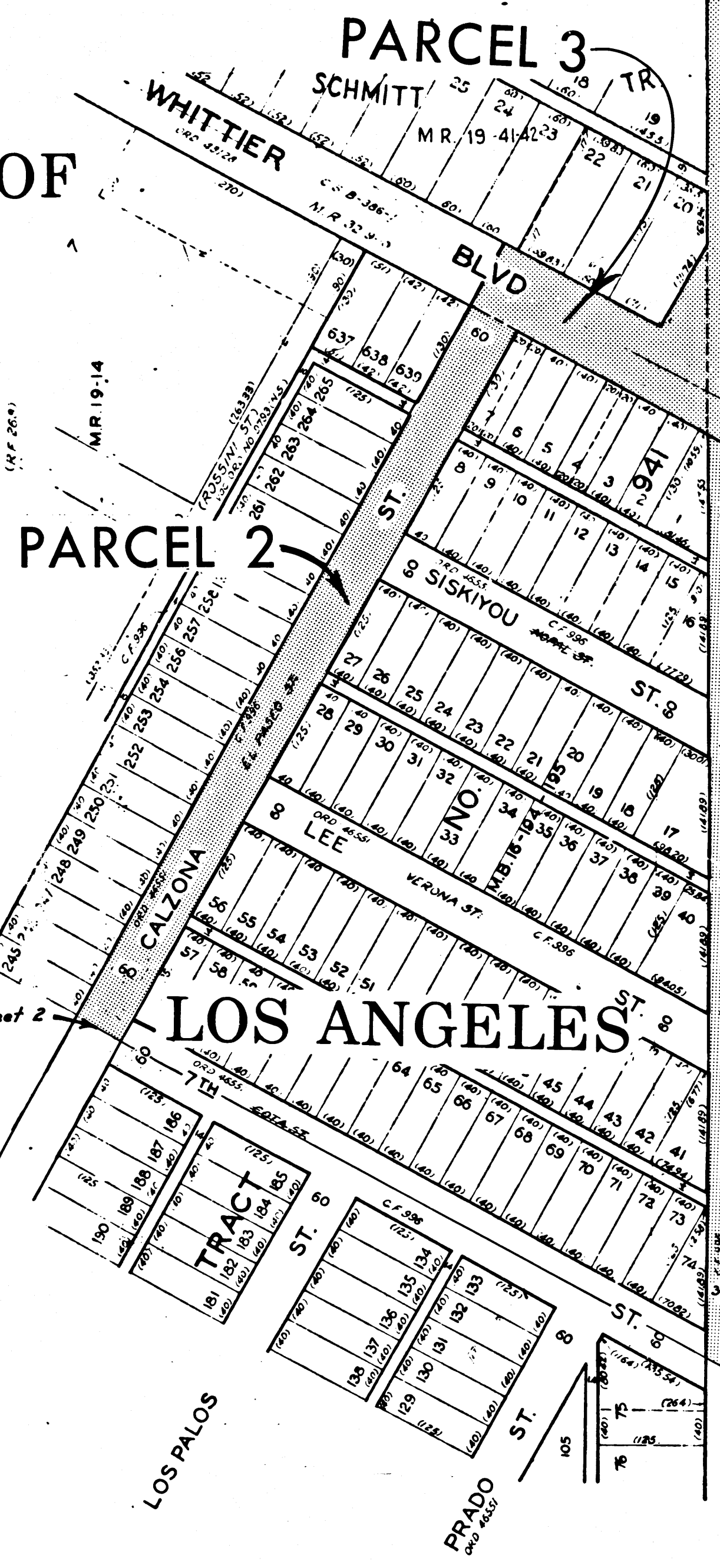


DIST.	COUNTY	ROUTE	POST MILES	SHEET No.	TOTAL SHEETS
7	LA	165	0.0/0.8	3	4

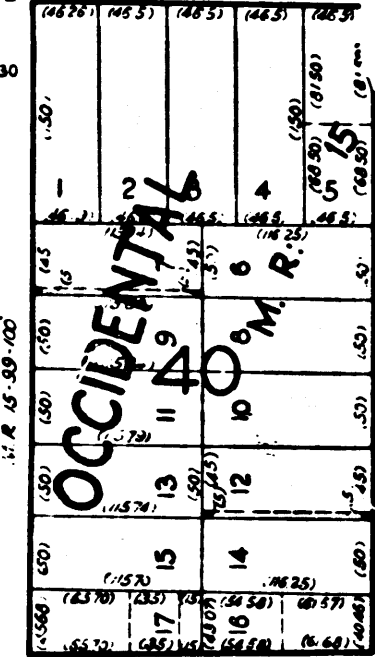
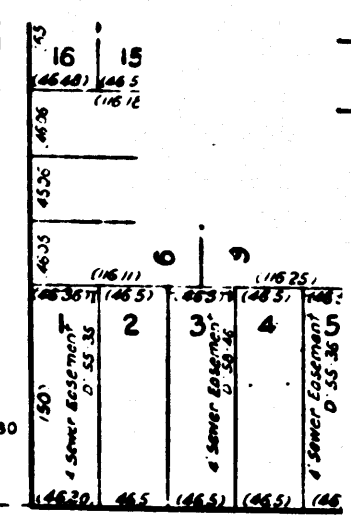
CITY OF



Match Point Sheet 2

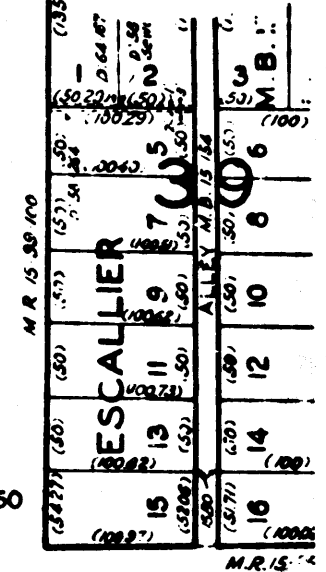


COUNTY OF
LAND
EMBRACED IN BLOCKS 32 & 41
OF THE
HOLLOWAY PARK TRACT
41
M.R. 43-71
PARK
E 25 252
LOS ANGELES
(30612)



Deputy District Engineer
DATE Dec. 16, 1965

FILED WITH LOS ANGELES
COUNTY RECORDER, RAY E. LEE
DEC 22 1965



REL-447
DRN BY BJK
C/LC BY
CK'D BY FM
BASE MAP NO'S
F 177 B
F 1779
REF. MAP NO'S
AS BUILT NO'S

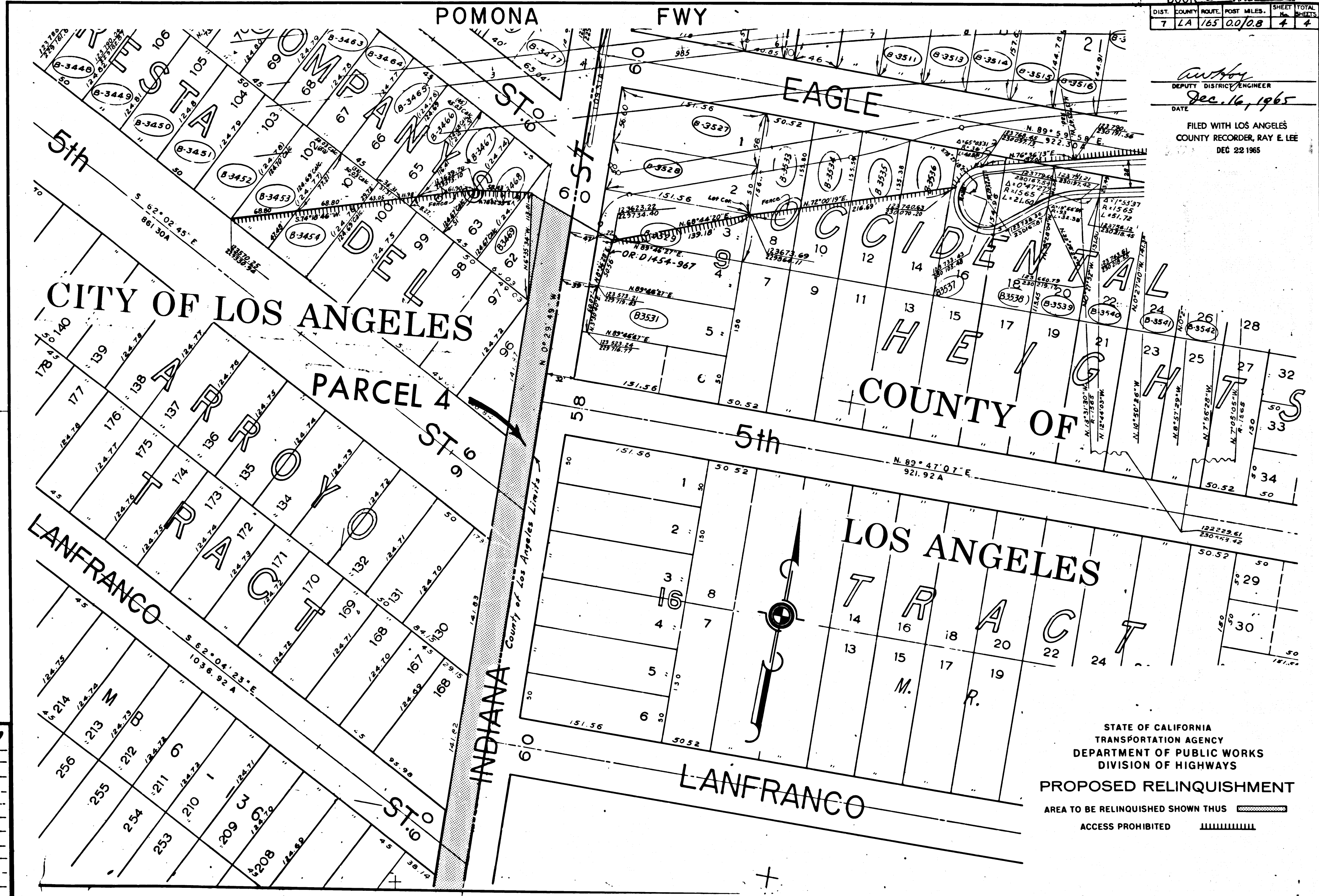
STATE OF CALIFORNIA
TRANSPORTATION AGENCY
DEPARTMENT OF PUBLIC WORKS
DIVISION OF HIGHWAYS

PROPOSED RELINQUISHMENT

AREA TO BE RELINQUISHED SHOWN THUS [hatched box]



Anthony
 DEPUTY DISTRICT ENGINEER
 DATE *Dec. 16, 1965*
 FILED WITH LOS ANGELES
 COUNTY RECORDER, RAY E. LEE
 DEC 22 1965



REL-447
 DWN BY BJK
 C.L.C. BY
 CKD BY F.M.
 BASE MAP NO'S
 F1778
 F1779
 REF. MAP NO'S
 AS BUILT NO'S

STATE OF CALIFORNIA
 TRANSPORTATION AGENCY
 DEPARTMENT OF PUBLIC WORKS
 DIVISION OF HIGHWAYS
PROPOSED RELINQUISHMENT
 AREA TO BE RELINQUISHED SHOWN THUS
 ACCESS PROHIBITED

