

DIST	COUNTY	ROUTE	POST MILES	SHEET No.	TOTAL SHEETS
07	LA	165	0.0/0.8	1	3

aw Hoy
 DEPUTY DISTRICT ENGINEER
 DATE Dec. 16, 1965

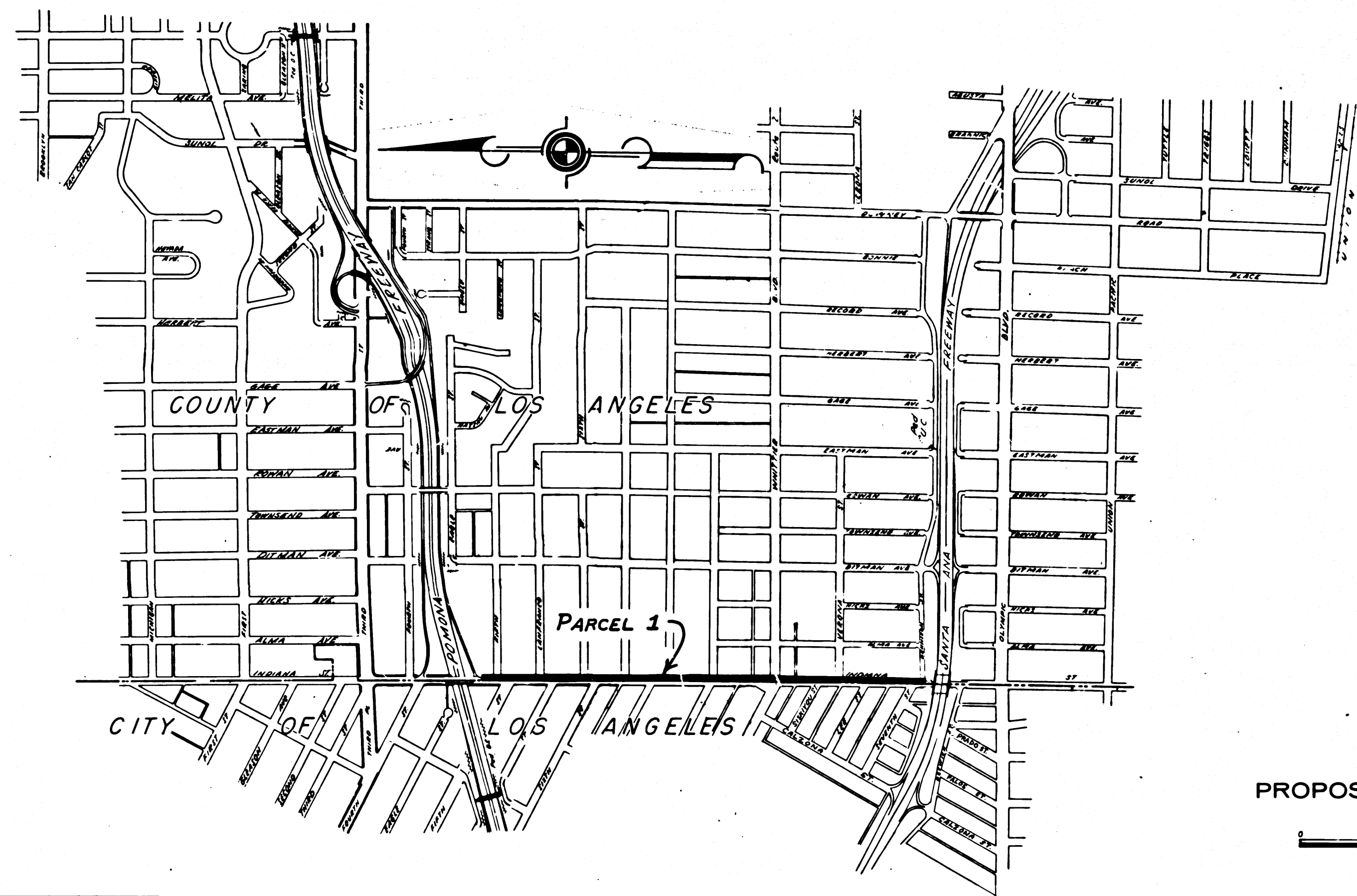
2470

RECORDED
 AT REQUEST OF
 DEPT. OF PUBLIC WORKS
 DEC. 22, 1965
 34 ~~PM~~ 9AM.

IN BOOK 3
 OF PAGE 27
 OF STATE HIGHWAY MAPS
 LOS ANGELES COUNTY, CALIF.
 RAY E. LEE
 COUNTY RECORDER
 BY *Cherry* **FREE**
 Deputy

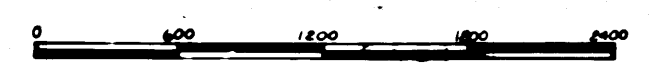
STATE OF CALIFORNIA
 TRANSPORTATION AGENCY
 DEPARTMENT OF PUBLIC WORKS
 DIVISION OF HIGHWAYS
 RIGHT OF WAY MAPS OF
STATE HIGHWAY
 In Los Angeles County
 between Route 5 and Route 60

3-27

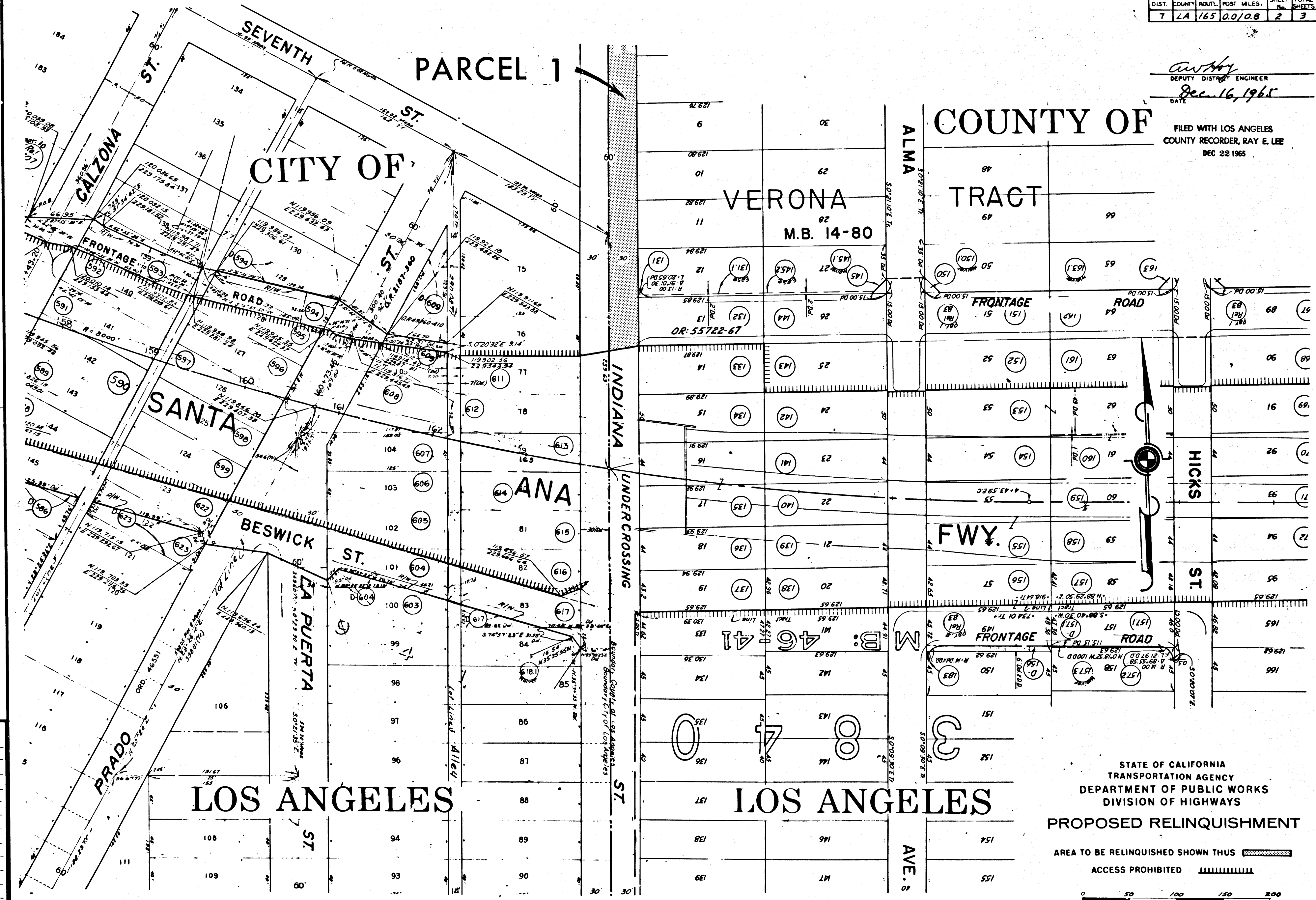


REL-448
 DRN BY BJK
 C/LC BY F.M.
 CKD BY J.D.
 BASE MAP NO'S
 F 1778 F-2011
 F 1779 F-2012
 REF. MAP NO'S
 AS BUILT NO'S

PROPOSED RELINQUISHMENT



awhy
 DEPUTY DISTRICT ENGINEER
 DATE Dec. 16, 1965
 FILED WITH LOS ANGELES
 COUNTY RECORDER, RAY E. LEE
 DEC 22 1965

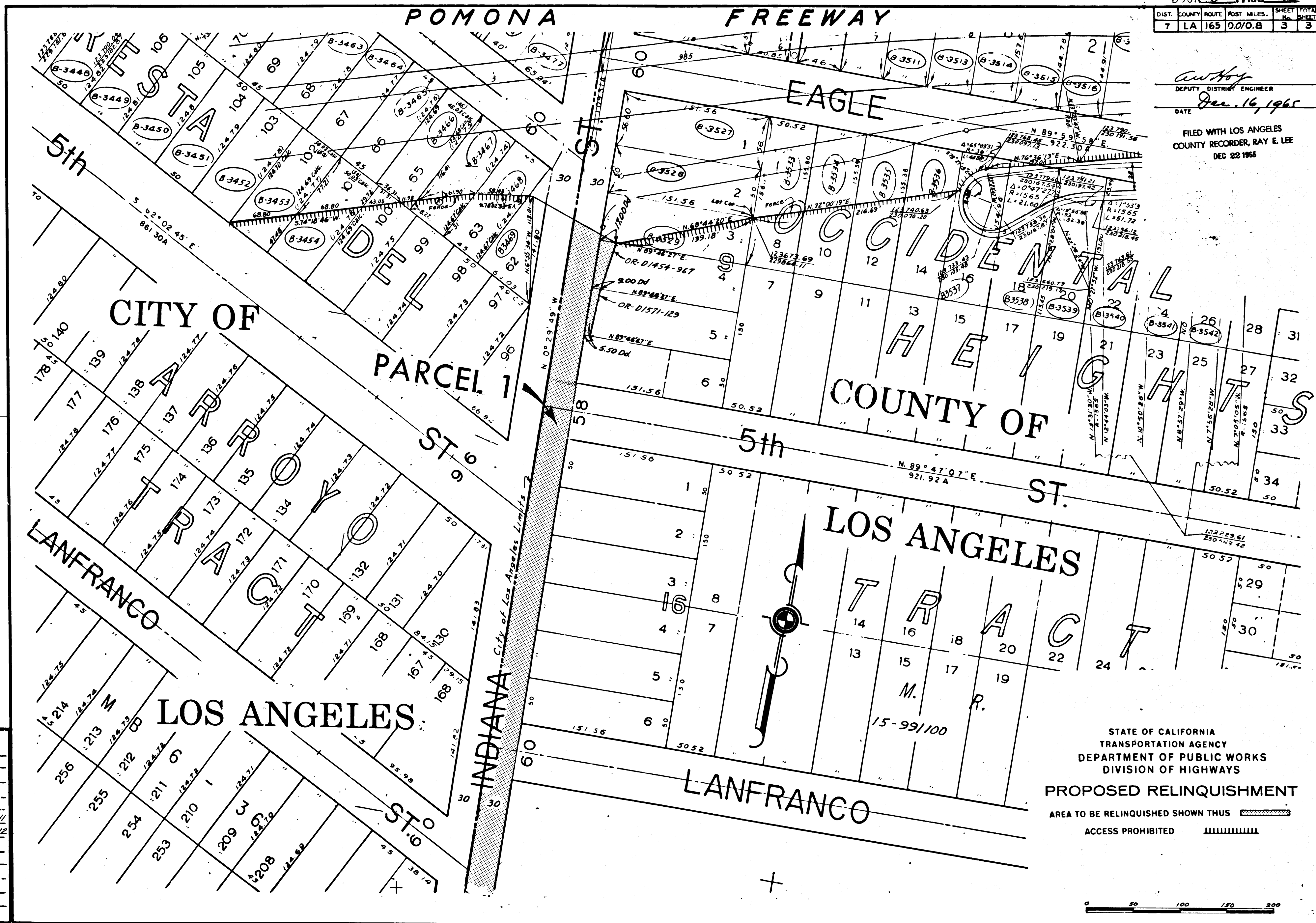


REL-448
 ORN BY B.K.
 C.L.C. BY F.M.
 CK'D BY J.D.
 BASE MAP NOS.
F1178 E2011
F1179 E2012
 REF. MAP NOS.
 AS BUILT NOS.


STATE OF CALIFORNIA
 TRANSPORTATION AGENCY
 DEPARTMENT OF PUBLIC WORKS
 DIVISION OF HIGHWAYS
PROPOSED RELINQUISHMENT
 AREA TO BE RELINQUISHED SHOWN THUS [shaded box]
 ACCESS PROHIBITED [dashed line]

DIST.	COUNTY	ROUTE	POST MILES.	SHEET NO.	TOTAL SHEETS.
7	LA	165	0.0/0.8	3	3

Anthony
 DEPUTY DISTRICT ENGINEER
 DATE Dec. 16, 1965
 FILED WITH LOS ANGELES
 COUNTY RECORDER, RAY E. LEE
 DEC 22 1965



REL- 448
 DWN BY: BJK
 CLC BY: EM
 CKD BY: JD
 BASE MAP NO'S...
F 1778 F 2011
F 1779 F 2012
 REF. MAP NO'S...
 AS BUILT NO'S...

STATE OF CALIFORNIA
 TRANSPORTATION AGENCY
 DEPARTMENT OF PUBLIC WORKS
 DIVISION OF HIGHWAYS
PROPOSED RELINQUISHMENT
 AREA TO BE RELINQUISHED SHOWN THUS 
 ACCESS PROHIBITED 