

DIST.	COUNTY	ROUTE	POST MILES.	SHEET No.	TOTAL SHEETS
7	LA	7	13.4	12	12

STATE OF CALIFORNIA  
 TRANSPORTATION AGENCY  
 DEPARTMENT OF PUBLIC WORKS  
 DIVISION OF HIGHWAYS

*Anthony*  
 DEPUTY DISTRICT ENGINEER  
 DATE *Dec. 16, 1965*

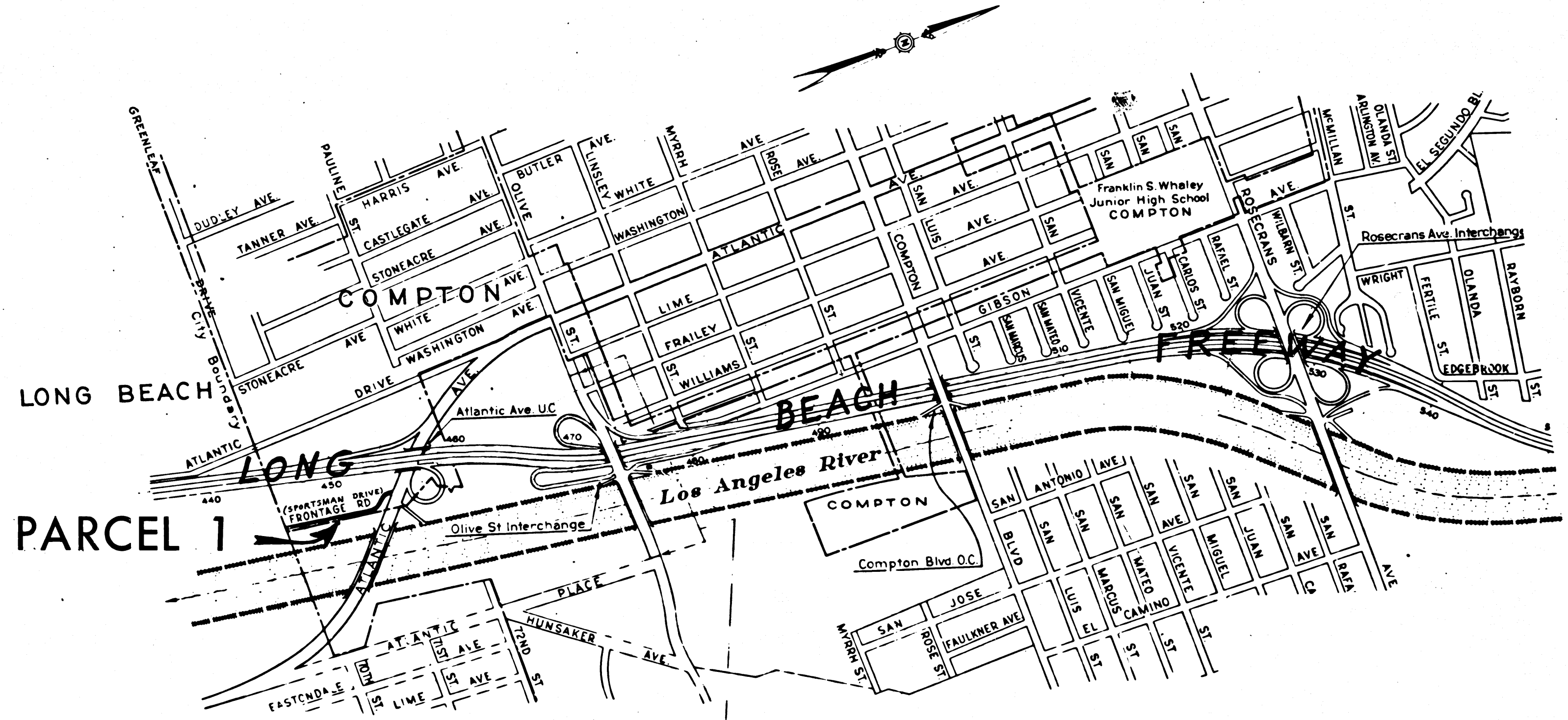
RIGHT OF WAY MAPS OF  
**STATE HIGHWAY**

2471  
 RECORDED  
 AT REQUEST OF  
 DEPT. OF PUBLIC WORKS  
 DEC. 22, 1965  
 34 PAST 9 AM.

In the City of Compton at Atlantic Avenue

IN BOOK 3  
 AT PAGE 30  
 OF STATE HIGHWAY MAPS  
 LOS ANGELES COUNTY, CALIF.  
 RAY E. LEE  
 COUNTY RECORDER  
 BY *[Signature]* Deputy  
 FREE

3-30



10-26-85

REL-439  
 DYN BY *B.J.K.*  
 C'LC BY *T. Kerber*  
 CKD BY *F.M.*  
 BASE MAP NOS...  
 E-1517  
 REF. MAP NOS...  
 CCM #19752  
 AS BUILT NOS...  
 110-12

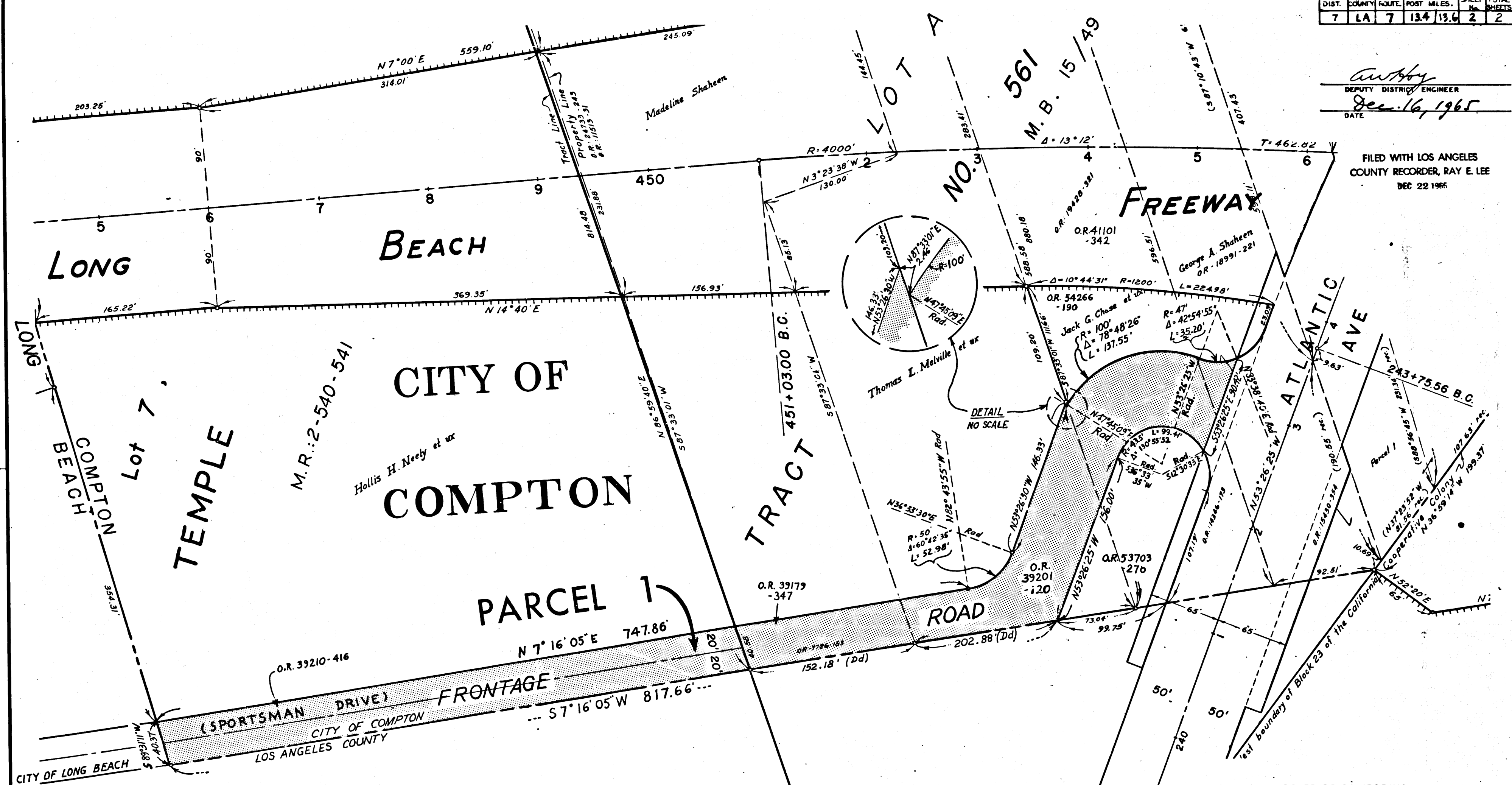
PROPOSED RELINQUISHMENT



DIST.	COUNTY	ROUTE	POST MILES.	SHEET No.	TOTAL SHEETS
7	LA	7	13.4	13.6	2

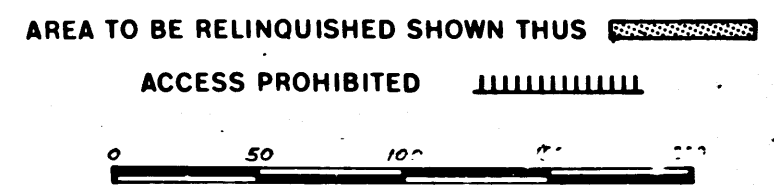
*Anthony*  
 DEPUTY DISTRICT ENGINEER  
 Dec. 16, 1965  
 DATE

FILED WITH LOS ANGELES  
 COUNTY RECORDER, RAY E. LEE  
 DEC 22 1965



CITY OF  
**COMPTON**  
 COUNTY OF  
**LOS ANGELES**

STATE OF CALIFORNIA  
 TRANSPORTATION AGENCY  
 DEPARTMENT OF PUBLIC WORKS  
 DIVISION OF HIGHWAYS  
**PROPOSED RELINQUISHMENT**



9-24-65

**REL-439**  
 DWN BY BJK  
 C.L.C. BY T. Kerker  
 CTD BY F.M.  
 BASE MAP NO'S  
 F-1517

REF. MAP NO'S  
 C.C.M. 19732

AS BUILT NO'S  
 110-12