

DIST	COUNTY	ROUTE	POST MILES	SHEET NO.	TOTAL SHEETS
07	L.A.	7	17.0	1	2

STATE OF CALIFORNIA
 TRANSPORTATION AGENCY
 DEPARTMENT OF PUBLIC WORKS
 DIVISION OF HIGHWAYS

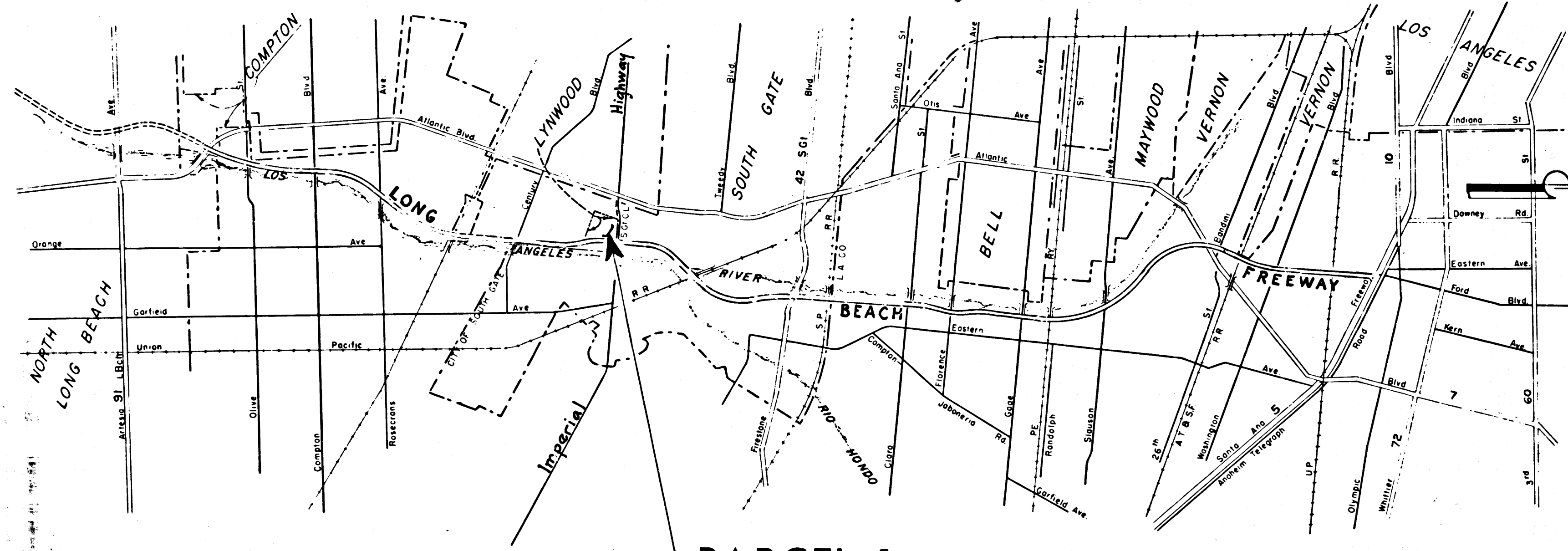
Anthony
 DEPUTY DISTRICT ENGINEER
 Dec. 22, 1965
 DATE

RIGHT OF WAY MAPS OF
STATE HIGHWAY

2713

RECORDED
 AT REQUEST OF
 DEPT. OF PUBLIC WORKS
 DEC 30, 1965
 39 9 AM
 IN BOOK 3
 AT PAGE 32
 OF STATE HIGHWAY MAPS
 LOS ANGELES COUNTY, CALIF.
 RAY E. LEE
 COUNTY RECORDER
 BY *J. Davis* Deputy **FREE**

In the County of Los Angeles at Imperial Highway.

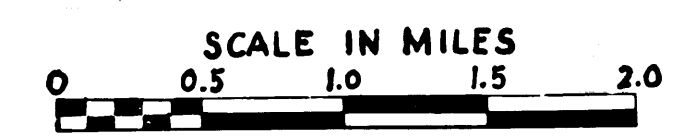


PARCEL 1

11-23-65

REL-470
 DRN BY B.J.K.
 C'LC BY T.K.
 C'XD BY F.M.
 BASE MAP NO'S
 F-1520
 C.C.M. 197.67
 REF. MAP NO'S
 C.C.M. 197.67
 AS BUILT NO'S
 121-17

PROPOSED RELINQUISHMENT

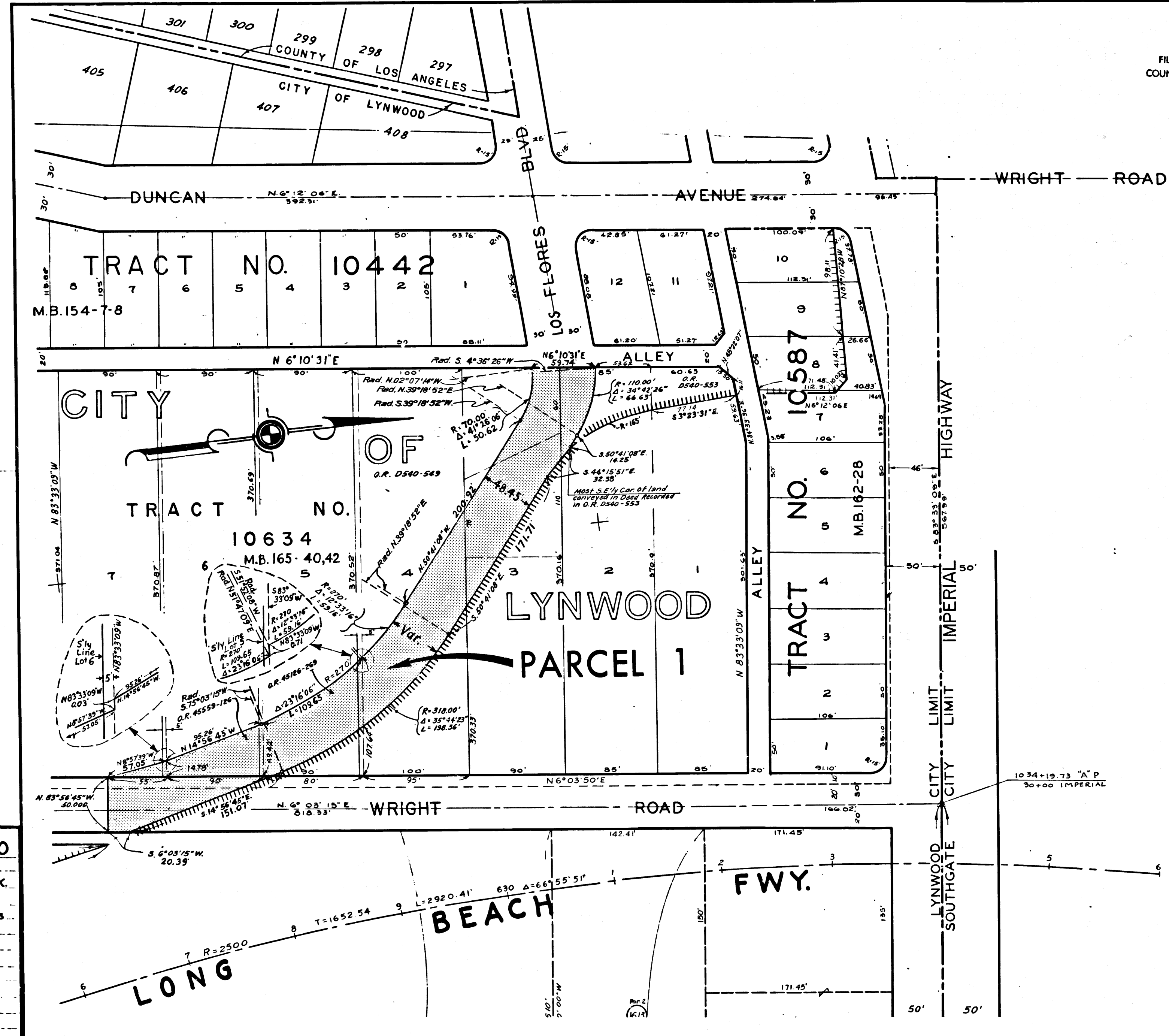


DIST.	COUNTY	ROUTE	POST MILES.	SHEET No.	TOTAL SHEETS
07	LA	7	17.0	2	2

2713

FILED WITH LOS ANGELES COUNTY RECORDER, RAY E. LEE DEC 30 1965

Ray E. Lee
DEPUTY DISTRICT ENGINEER
DATE Dec. 22, 1965



11-23-65

REL-470
 DRN BY B.W.
 CLK BY T.W.K.
 CK'D BY T.K.
 BASE MAP NO'S
 F-1520

REF. MAP NO'S
 C.C.M. 197.67

AS BUILT NO'S
 121-17

STATE OF CALIFORNIA
 TRANSPORTATION AGENCY
 DEPARTMENT OF PUBLIC WORKS
 DIVISION OF HIGHWAYS

PROPOSED RELINQUISHMENT

AREA TO BE RELINQUISHED SHOWN THUS 
 ACCESS PROHIBITED 

