

DIST	COUNTY	ROUTE	POST MILES	SHEET No.	TOTAL SHEETS
07	L.A.	10	35.4/35.5	1	2

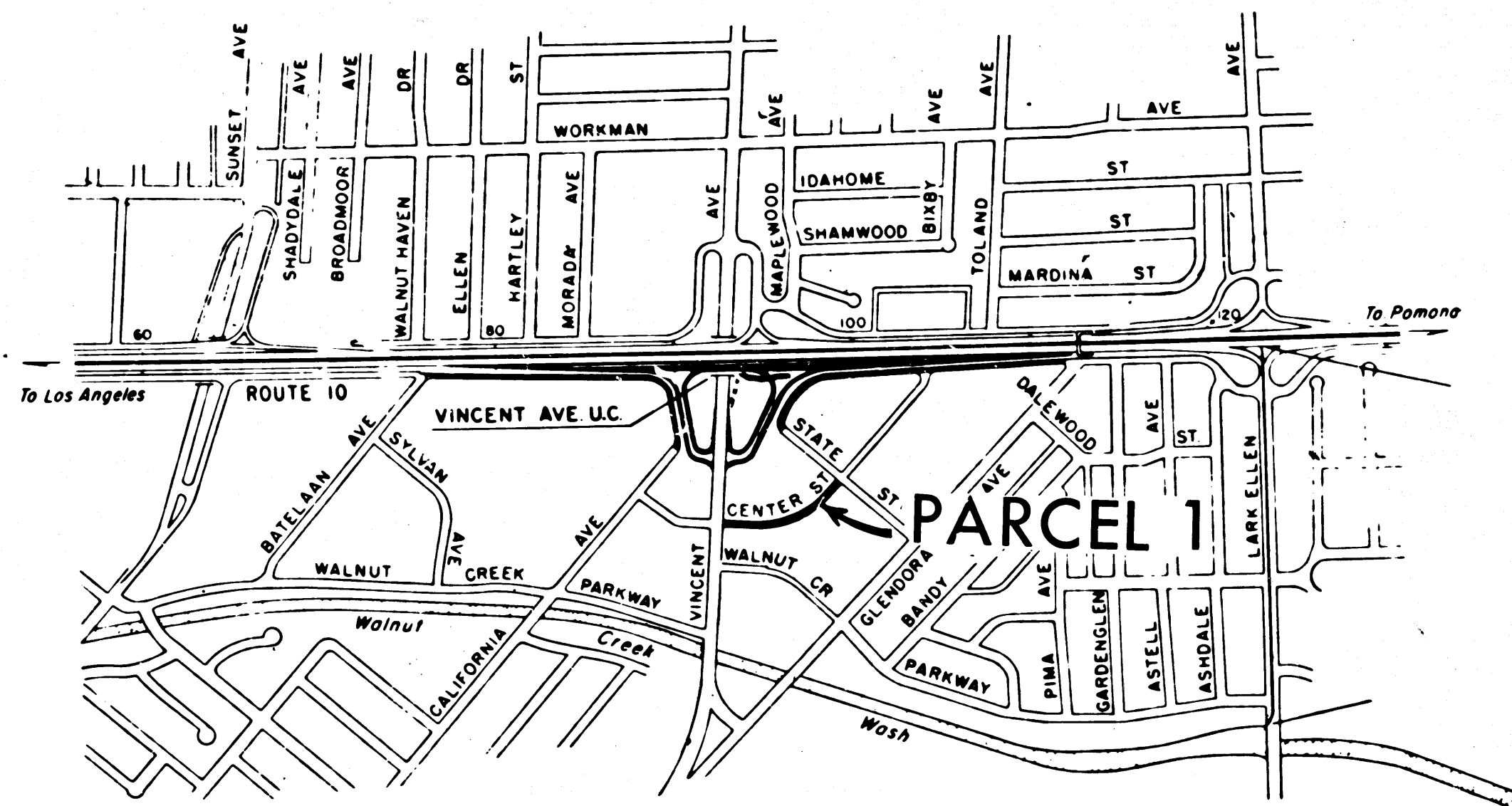
Anthony
 DEPUTY DISTRICT ENGINEER
 DATE Dec. 30, 1965

STATE OF CALIFORNIA
 TRANSPORTATION AGENCY
 DEPARTMENT OF PUBLIC WORKS
 DIVISION OF HIGHWAYS

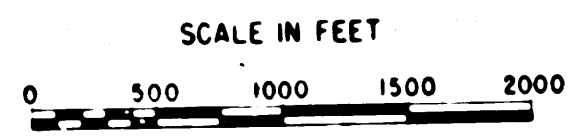
RIGHT OF WAY MAPS OF
STATE HIGHWAY

In Los Angeles County in West Covina between 0.3 mile west and 0.4 mile east of Vincent Avenue

4786
 RECORDED
 AT REQUEST OF
 DEPT. OF PUBLIC WORKS
 DEC. 31, 1965
 30 MIN. POST 2 P.M.
 IN BOOK 3
 AT PAGE 34
 OF STATE HIGHWAY MAPS
 LOS ANGELES COUNTY, CALIF.
 RAY E. LEE
 COUNTY RECORDER
 BY *[Signature]* **FREE**
 Deputy



WEST COVINA



INTERSTATE

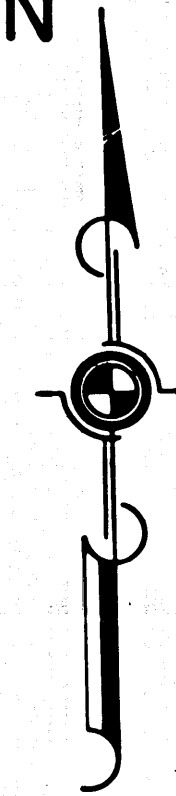
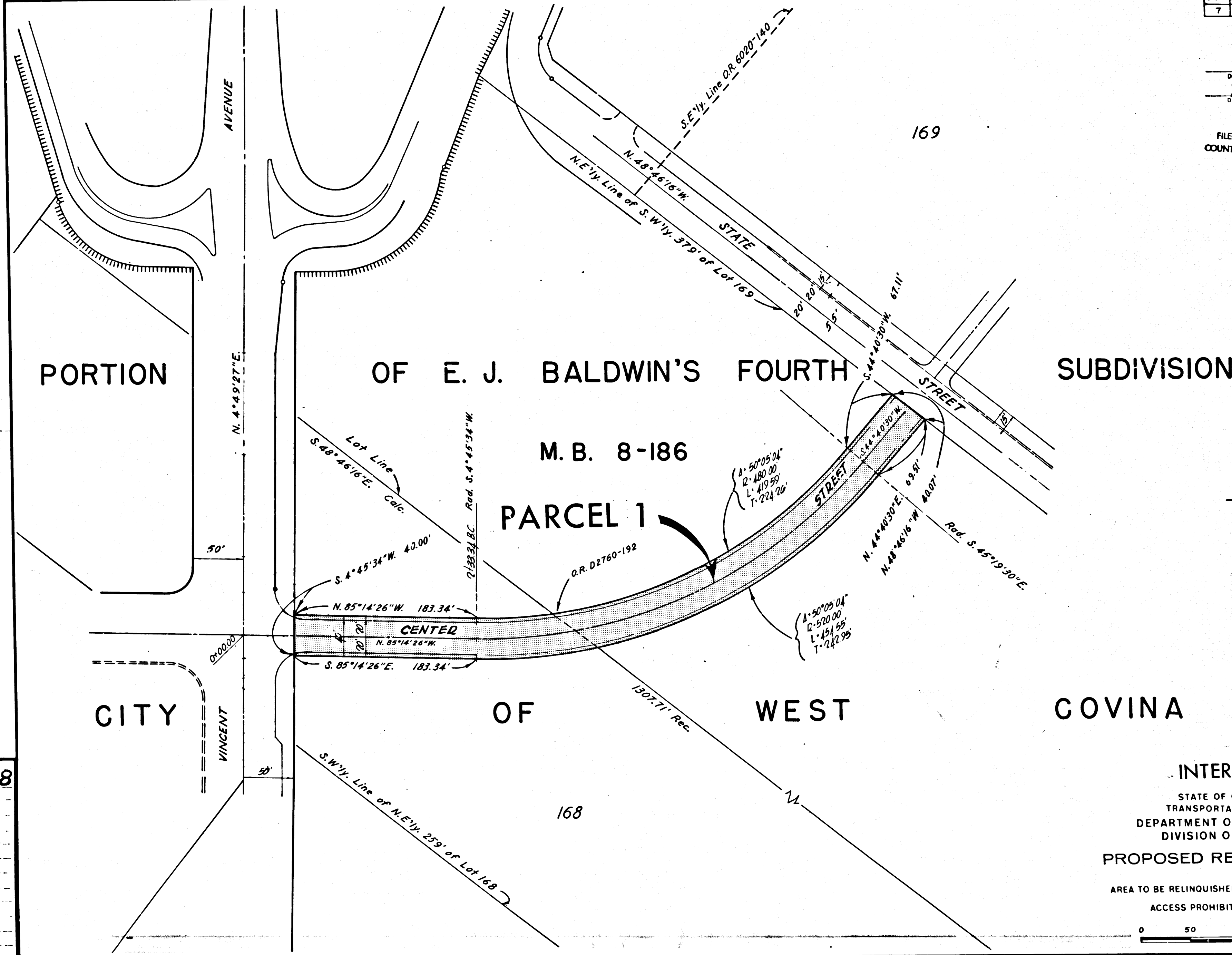
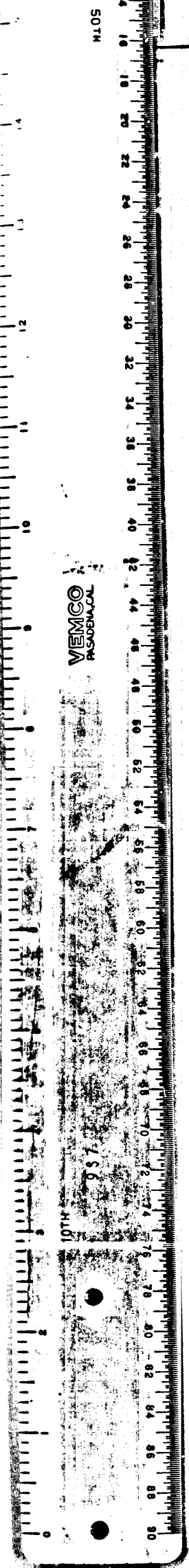
PROPOSED RELINQUISHMENT

REL-468
 DRN BY J.F.F.
 C.L.C. BY J.F.F.
 CK'D BY FM
 BASE MAP NO'S
 F-1863
 REF. MAP NOS.
 C.C.M. 72.3
 72.4
 AS BUILT NO'S
 160-4

DIST.	COUNTY	ROUTE	POST MILES.	SHEET No.	TOTAL SHEETS
7	L.A.	10	35.4/35.5	2	2

Arthur
 DEPUTY DISTRICT ENGINEER
 DATE *Dec. 20, 1965*

FILED WITH LOS ANGELES
 COUNTY RECORDER, RAY E. LEE
 DEC 31 1965



REL-468
 DWN BY J.F.F.
 C'LC BY J.F.F.
 CKD BY F.M.
 BASE MAP NO'S
 F-1863
 REF. MAP NO'S
 C.C.M. 72.3,
 72.4
 AS BUILT NO'S
 160-4

INTERSTATE
 STATE OF CALIFORNIA
 TRANSPORTATION AGENCY
 DEPARTMENT OF PUBLIC WORKS
 DIVISION OF HIGHWAYS
PROPOSED RELINQUISHMENT
 AREA TO BE RELINQUISHED SHOWN THUS
 ACCESS PROHIBITED
 0 50 100 150 200 ft.