

BOOK 3 PAGE 36

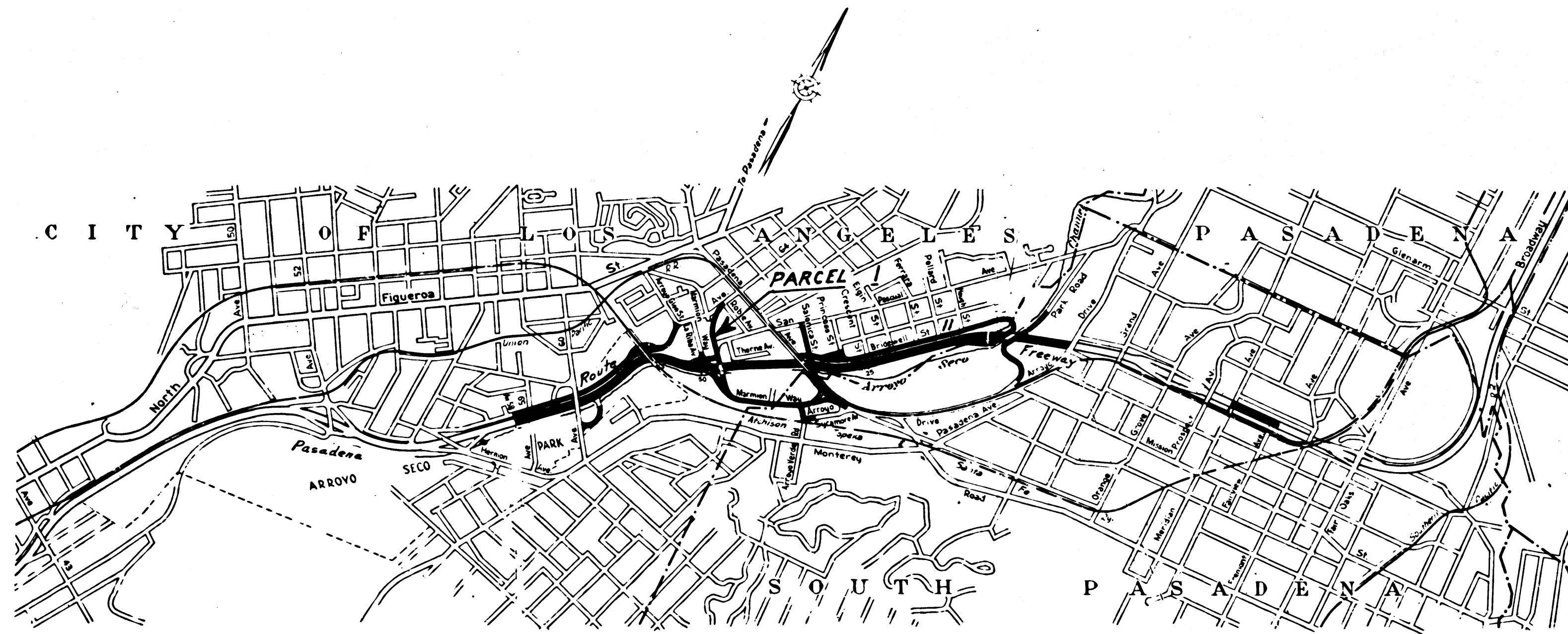
DIST.	COUNTY	ROUTE	POST MILES.	SHEET No.	TOTAL SHEETS
07	LA.	11	29.2	1	2

STATE OF CALIFORNIA
 TRANSPORTATION AGENCY
 DEPARTMENT OF PUBLIC WORKS
 DIVISION OF HIGHWAYS

RIGHT OF WAY MAPS OF
STATE HIGHWAY
 In The City of Los Angeles Near The Pasadena
 Freeway At Marmion Way

RET Dellebach
 DEPUTY DISTRICT ENGINEER
 Dec. 28, 1965
 DATE

3182
 RECORDED
 AT REQUEST OF
 DEPT. OF PUBLIC WORKS
 JAN. 4, 1966
 55 MIN. PAST 10AM.
 IN BOOK 3
 AT PAGE 36
 OF STATE HIGHWAY MAPS
 LOS ANGELES COUNTY, CALIF.
 RAY E. LEE
 COUNTY RECORDER
 BY *[Signature]* Deputy **FREE**

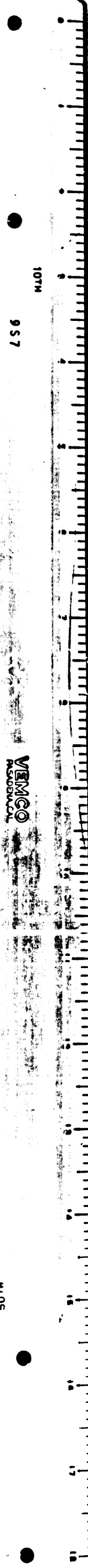


PROPOSED RELINQUISHMENT

REL-438
 DRN BY J.E.E.
 C'LC BY B.V.G.
 CK'D BY E.M.
 BASE MAP NO'S
 E-1768
 REF. MAP NO'S
 AS BUILT NO'S
 P-7992
 865-8

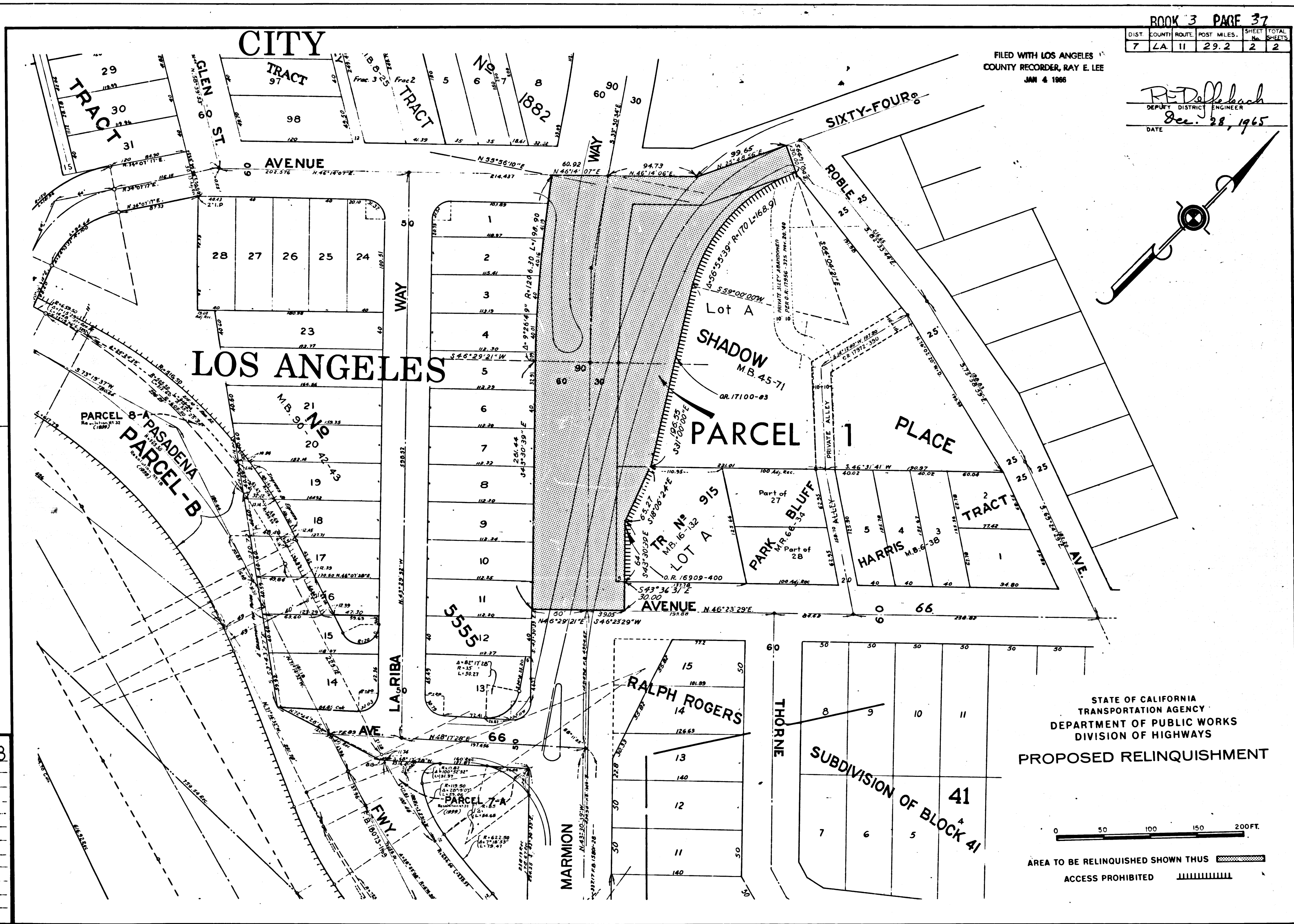


3/26-37
 1055



FILED WITH LOS ANGELES COUNTY RECORDER, RAY E. LEE
 JAN 4 1966

R. D. Doffelbach
 DEPUTY DISTRICT ENGINEER
 DATE Dec. 28, 1965



REL-438
 DRN BY J.F.F.
 C.L.C. BY R.V.G.
 CK'D BY F.M.
 BASE MAP NO'S
 F-1768
 REF. MAP NO'S
 AS BUILT NO'S
 P-7992
 865-8

STATE OF CALIFORNIA
 TRANSPORTATION AGENCY
 DEPARTMENT OF PUBLIC WORKS
 DIVISION OF HIGHWAYS
 PROPOSED RELINQUISHMENT

0 50 100 150 200 FT.
 AREA TO BE RELINQUISHED SHOWN THUS [shaded area symbol]
 ACCESS PROHIBITED [hatched area symbol]