

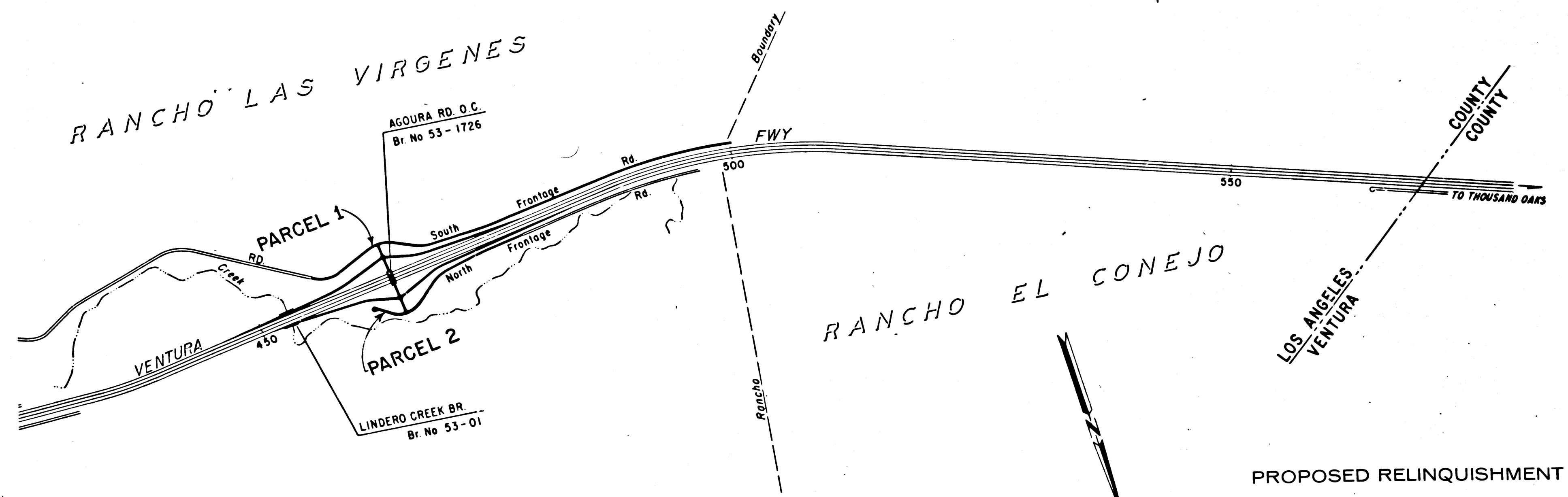
DIST.	COUNTY	ROUTE	POST MILES.	SHEET No.	TOTAL SHEETS
7	LA	101	36.1/36.9	1	3

STATE OF CALIFORNIA
 TRANSPORTATION AGENCY
 DEPARTMENT OF PUBLIC WORKS
 DIVISION OF HIGHWAYS
**RIGHT OF WAY MAPS OF
 STATE HIGHWAY**

Anthony
 DEPUTY DISTRICT ENGINEER
 DATE Dec. 29, 1965

2482
 RECORDED
 AT REQUEST OF
 DEPT. OF PUBLIC WORKS
 JAN. 6, 1966
 5 MIN.
 PAST 9 A.M.
 IN BOOK 3
 AT PAGE 38
 OF STATE HIGHWAY MAPS
 LOS ANGELES COUNTY, CALIF.
 RAY E. LEE
 COUNTY RECORDER
 BY *[Signature]* Deputy
 FREE

In Los Angeles County between 0.6 mile northwest
 of Kanan Road and Ventura County Line near Thousand Oaks



PROPOSED RELINQUISHMENT

REL-361
 DRN BY JNS
 C/LC BY JNS
 CKD BY T.K.
 BASE MAP NOS...
10362, 10242
F-2217-3
 REF. MAP NOS...
CCM-13.2
 AS BUILT NOS...
164-6

FILED WITH LOS ANGELES COUNTY RECORDER, RAY E. LEE
JAN 6 1966

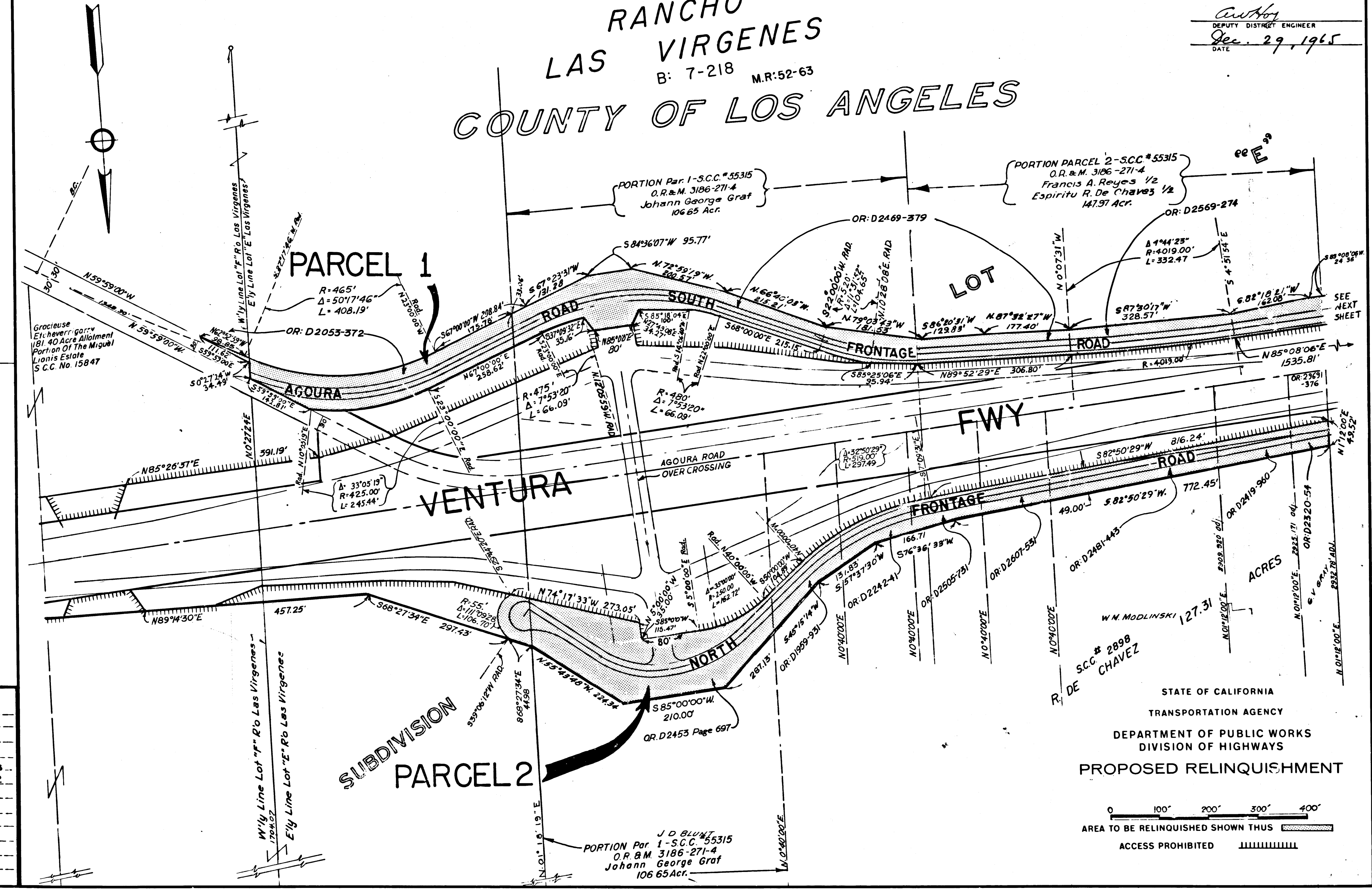
DIST.	COUNTY	ROUTE	POST MILES	SHEET No.	TOTAL SHEETS
7	LA	101	36.1/36.9	2	3

C. W. Hoy
DEPUTY DISTRICT ENGINEER
DATE: 29, 1965

LAS VIRGENES

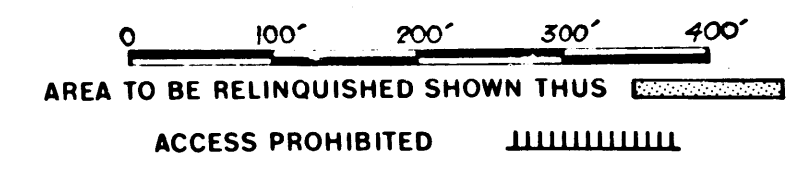
COUNTY OF LOS ANGELES

B: 7-218 M.R:52-63



REL-361
 DRN BY JNS
 C.L.C BY JNS
 CK'D BY JNS
 BASE MAP NO'S
 10362, 10242
 F-2217.3
 REF. MAP NO'S
 S.C.M. 13.2
 AS BUILT NO'S
 167-6

STATE OF CALIFORNIA
 TRANSPORTATION AGENCY
 DEPARTMENT OF PUBLIC WORKS
 DIVISION OF HIGHWAYS
PROPOSED RELINQUISHMENT



FILED WITH LOS ANGELES
 COUNTY RECORDER, RAY E. LEE
 JAN 6 1966

Anthony
 DEPUTY DISTRICT ENGINEER
 Dec. 29, 1965
 DATE

RANCHO LAS VIRGENES
 Book 7 Pages 218 & 219 Of Patents

M.R. - 52 - 63
 COUNTY OF LOS ANGELES

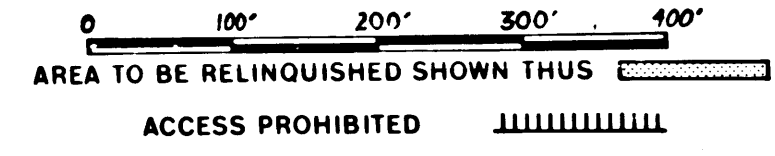
OF PARCEL 1

PORTION PARCEL 2-S.C.C. 55315
 O.R.B.M. 3186-271.4
 Francis A. Reyes 1/2
 Espiritu R. De Chavez 1/2
 147.97 Acres

PORTION PARCEL 2-S.C.C. 55315
 O.R.B.M. 3186-271.4
 Francis A. Reyes 1/2
 Espiritu R. De Chavez 1/2
 147.97 Acres

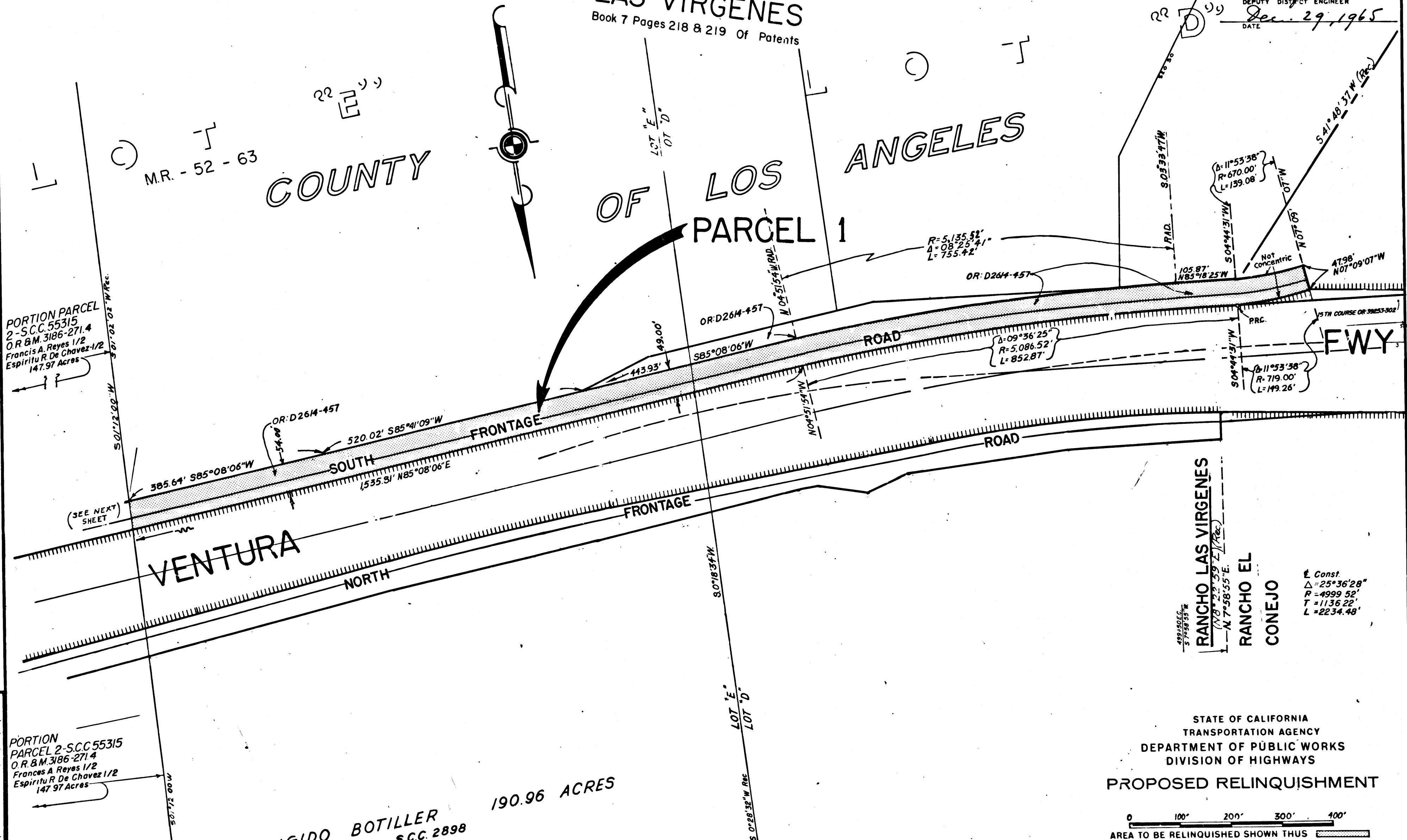
BRIGIDO BOTILLER
 S.C.C. 2898
 190.96 ACRES

STATE OF CALIFORNIA
 TRANSPORTATION AGENCY
 DEPARTMENT OF PUBLIC WORKS
 DIVISION OF HIGHWAYS
 PROPOSED RELINQUISHMENT



RANCHO LAS VIRGENES
 RANCHO EL CONEJO

Const.
 Δ = 25°36'28"
 R = 4999.52'
 T = 1136.22'
 L = 2234.48'



REL-361
 DWTN BY JNS
 C.L.C. BY JNS
 CK'D BY T.K.
 BASE MAP NO'S
 10362, 10242
 F. 2217.3
 REF. MAP NO'S
 C.C.M. #13.2
 AS BUILT NO'S
 164-6