

843 29 41

BOOK 3		PAGE 41	
DIST	COUNTY	ROUTE	POST MILES
7	L.A.	60	1.6
SHEET NO.	TOTAL SHEETS		
1	2		

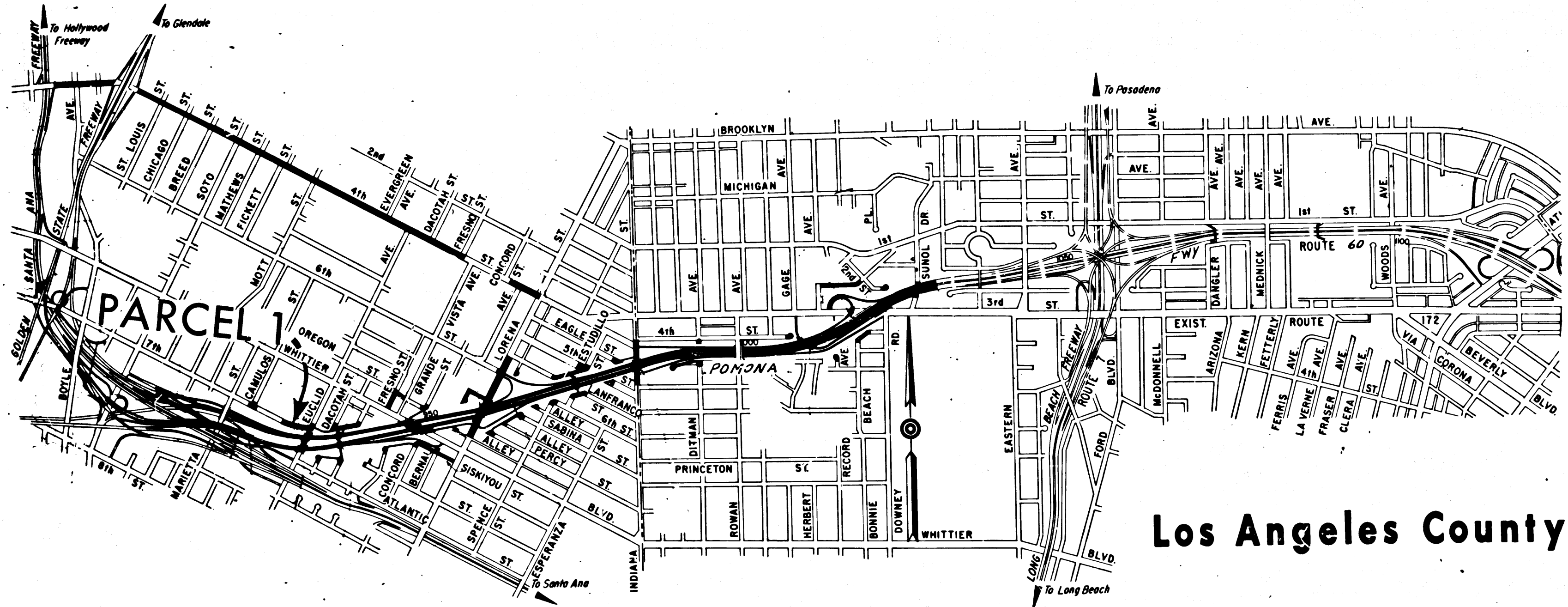
STATE OF CALIFORNIA  
 TRANSPORTATION AGENCY  
 DEPARTMENT OF PUBLIC WORKS  
 DIVISION OF HIGHWAYS

*R. DeLoach*  
 DEPUTY DISTRICT ENGINEER  
 DATE Dec. 30, 1965

RIGHT OF WAY MAPS OF  
**STATE HIGHWAY**

In Los Angeles County in Los Angeles  
 between the Santa Ana Freeway and Third Street

4051  
 RECORDED  
 AT REQUEST OF  
 DEPT. OF PUBLIC WORKS  
 JAN 7 1966  
 124 MIN PAST 2 PM  
 BOOK 3  
 PAGE 41  
 OF STATE HIGHWAY MAPS  
 LOS ANGELES COUNTY, CALIF.  
 RAY E. LEE  
 COUNTY RECORDER  
 BY *J. DeLoach* Deputy *PREB*



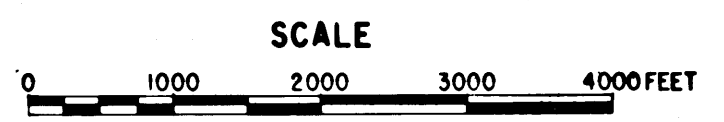
PARCEL 1

Los Angeles County

LOS ANGELES

REL-461  
 DRN BY J.F.F.  
 C/LC BY J.F.F.  
 CK'D BY J.D.  
 BASE MAP NOS  
 F-1777  
 REF. MAP NOS  
 C.C.M. 214.1  
 AS BUILT NOS  
 155-14

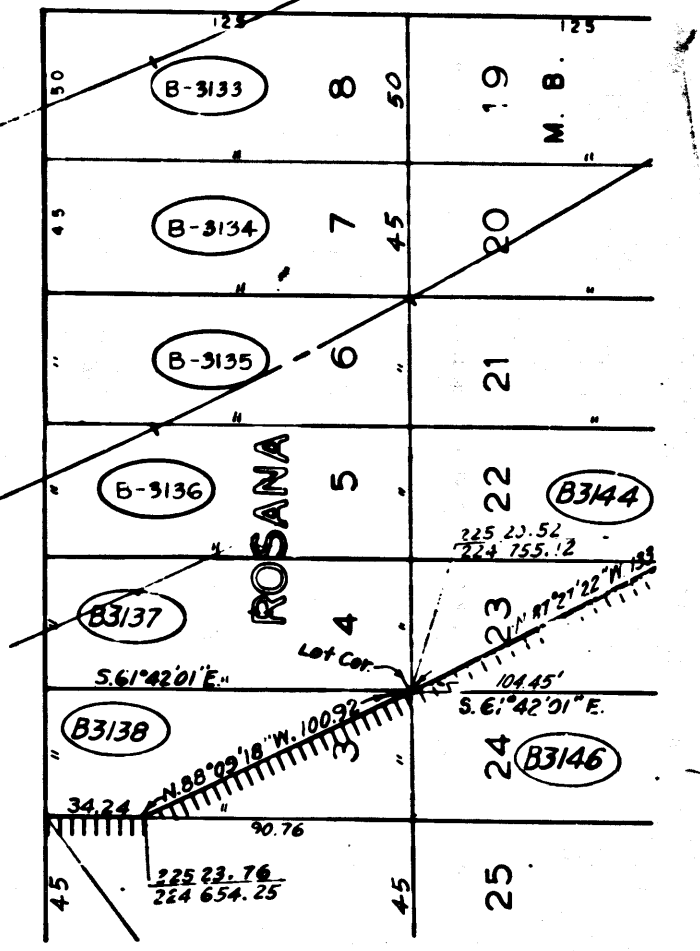
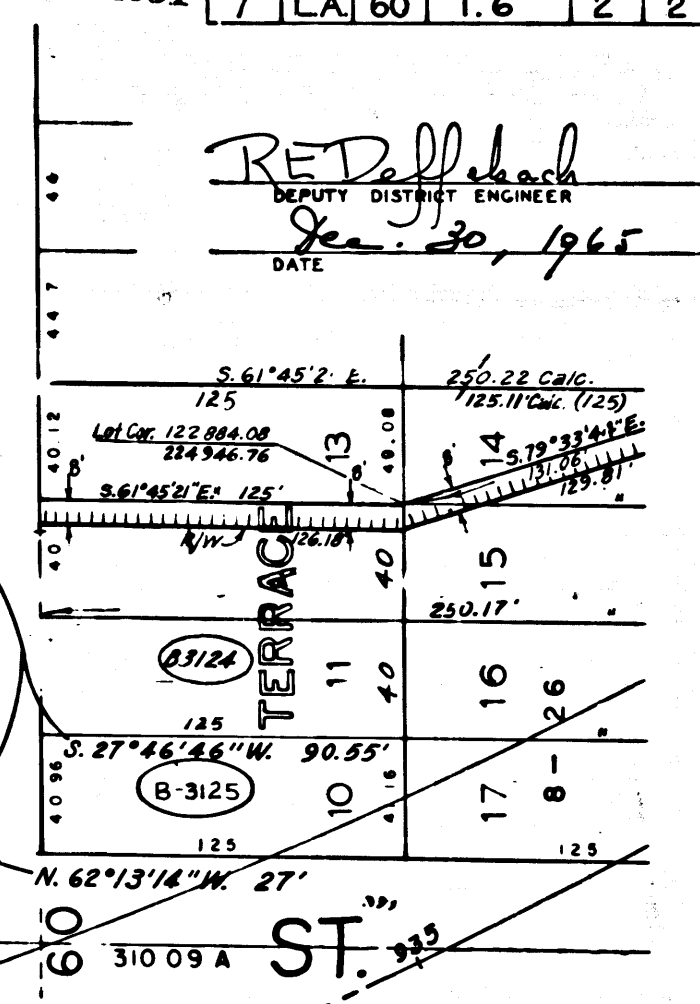
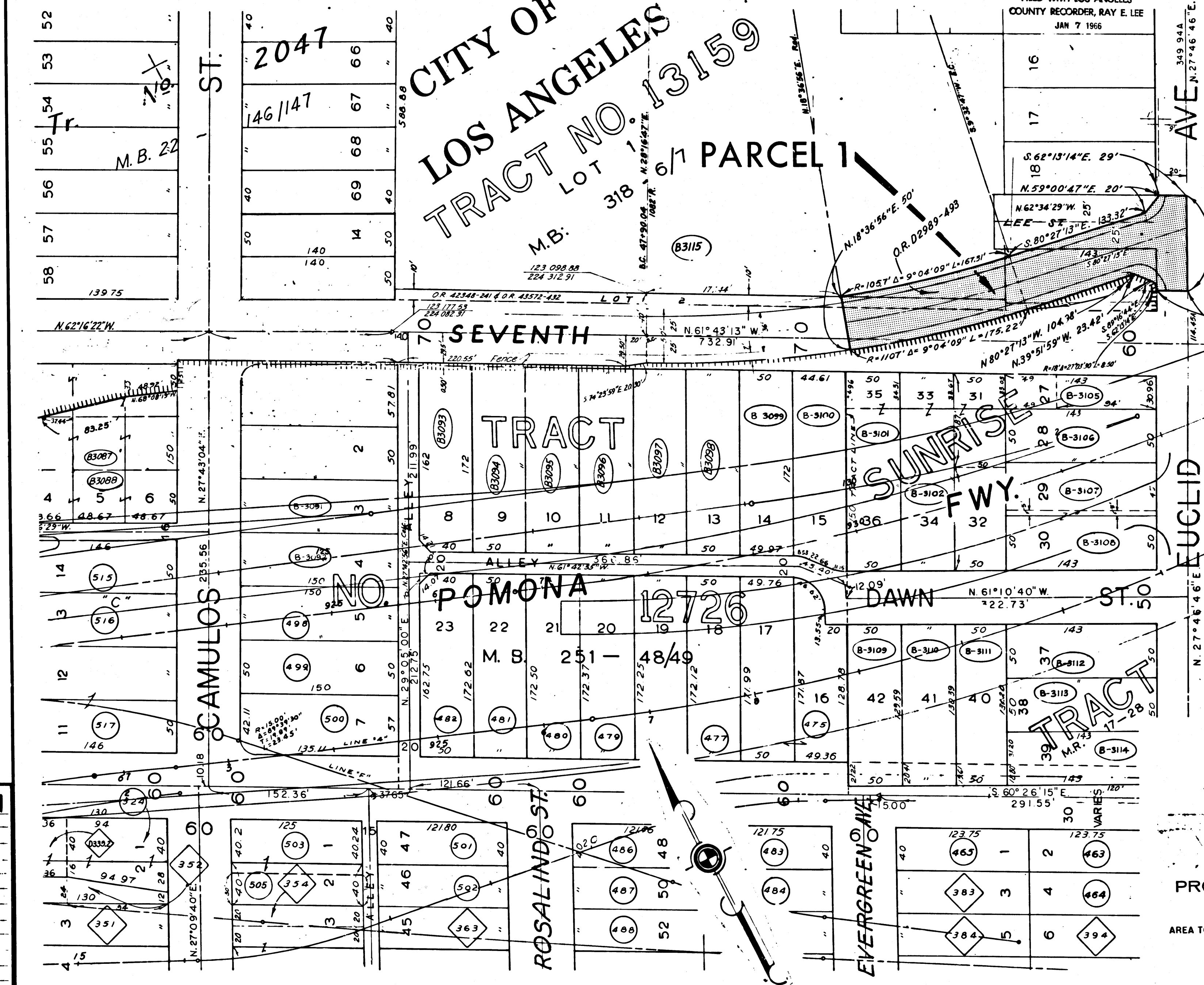
STATE OF CALIFORNIA  
 TRANSPORTATION AGENCY  
 DEPARTMENT OF PUBLIC WORKS  
 DIVISION OF HIGHWAYS  
 PROPOSED RELINQUISHMENT



DIST.	COUNTY	ROUTE	POST MILES.	SHEET	TOTAL SHEETS
7	LA	60	1.6	2	2

FILED WITH LOS ANGELES  
COUNTY RECORDER, RAY E. LEE  
JAN 7 1966

RED DeLeach  
DEPUTY DISTRICT ENGINEER  
Jan. 30, 1965  
DATE



REL-461  
DWN BY J.F.F.  
C/LC BY J.F.F.  
CKD BY J.D.  
BASE MAP NO'S  
F1111  
REF. MAP NO'S  
C.C.N. 214.1  
AS BUILT NO'S  
155-14

STATE OF CALIFORNIA  
TRANSPORTATION AGENCY  
DEPARTMENT OF PUBLIC WORKS  
DIVISION OF HIGHWAYS  
**PROPOSED RELINQUISHMENT**  
AREA TO BE RELINQUISHED SHOWN THUS ACCESS PROHIBITED   
0 50 100 150 200 ft.