

343-77

DIST.	COUNTY	ROUTE	POST MILES	SHEET NO.	TOTAL SHEETS
7	LA	605	8.9/10.7	1	11

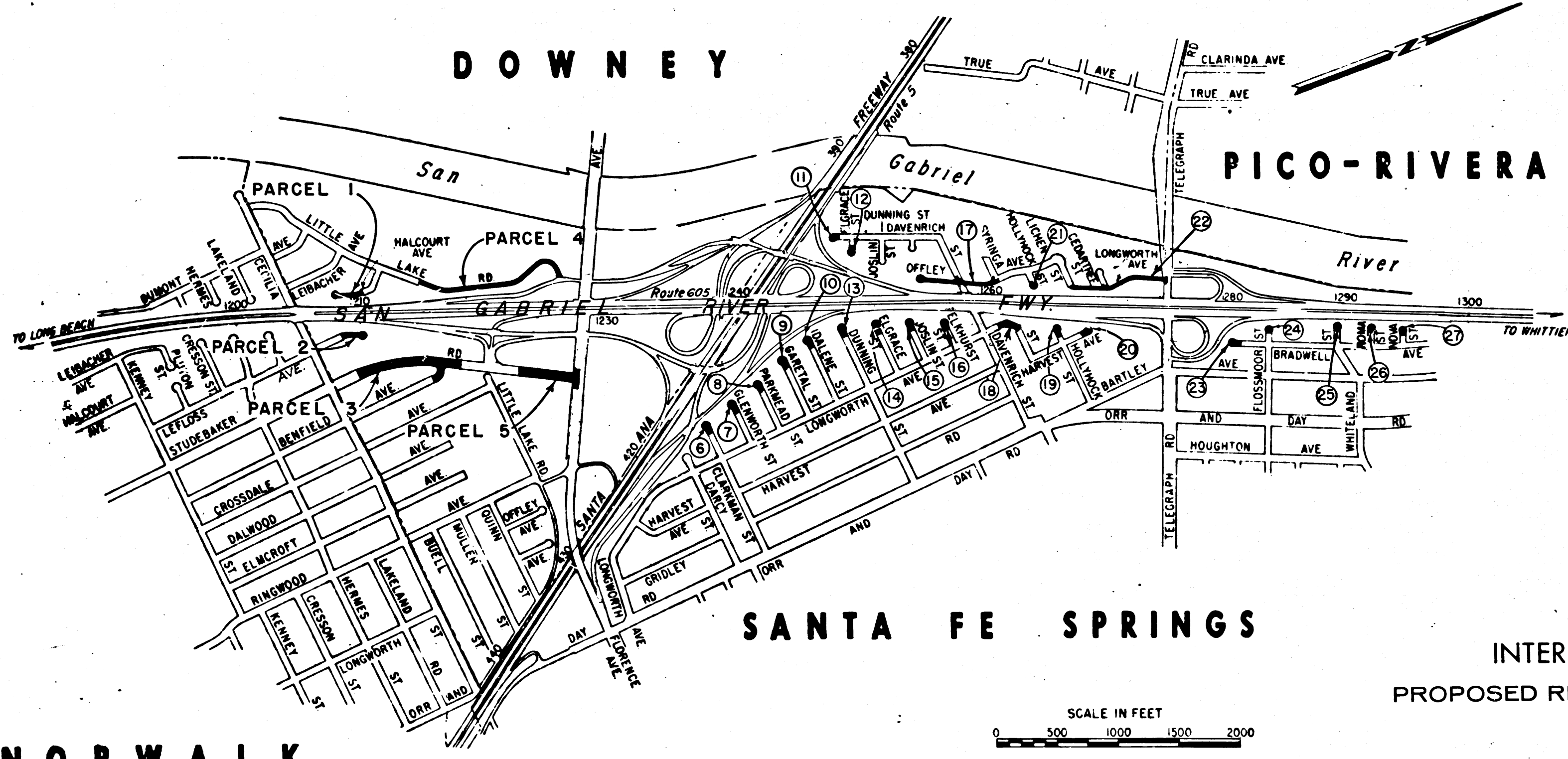
STATE OF CALIFORNIA
 TRANSPORTATION AGENCY
 DEPARTMENT OF PUBLIC WORKS
 DIVISION OF HIGHWAYS

awhy
 DEPUTY DISTRICT ENGINEER
 DATE Jan. 24, 1966

RIGHT OF WAY MAPS OF
STATE HIGHWAY

In Los Angeles County, between Cecilia Street in Downey and 0.4 mile north of Telegraph Road in Santa Fe Springs, including Santa Ana Freeway Interchange

3444
 RECORDED
 AT REQUEST OF
 DEPT. OF PUBLIC WORKS
 JAN. 28, 1966
 MIN. 20 PAST 10 A.M.
 BY *Ray E. Lee*
 COUNTY RECORDER
 FREE



NORWALK

SANTA FE SPRINGS

INTERSTATE
PROPOSED RELINQUISHMENT

— LOCATION OF PARCEL

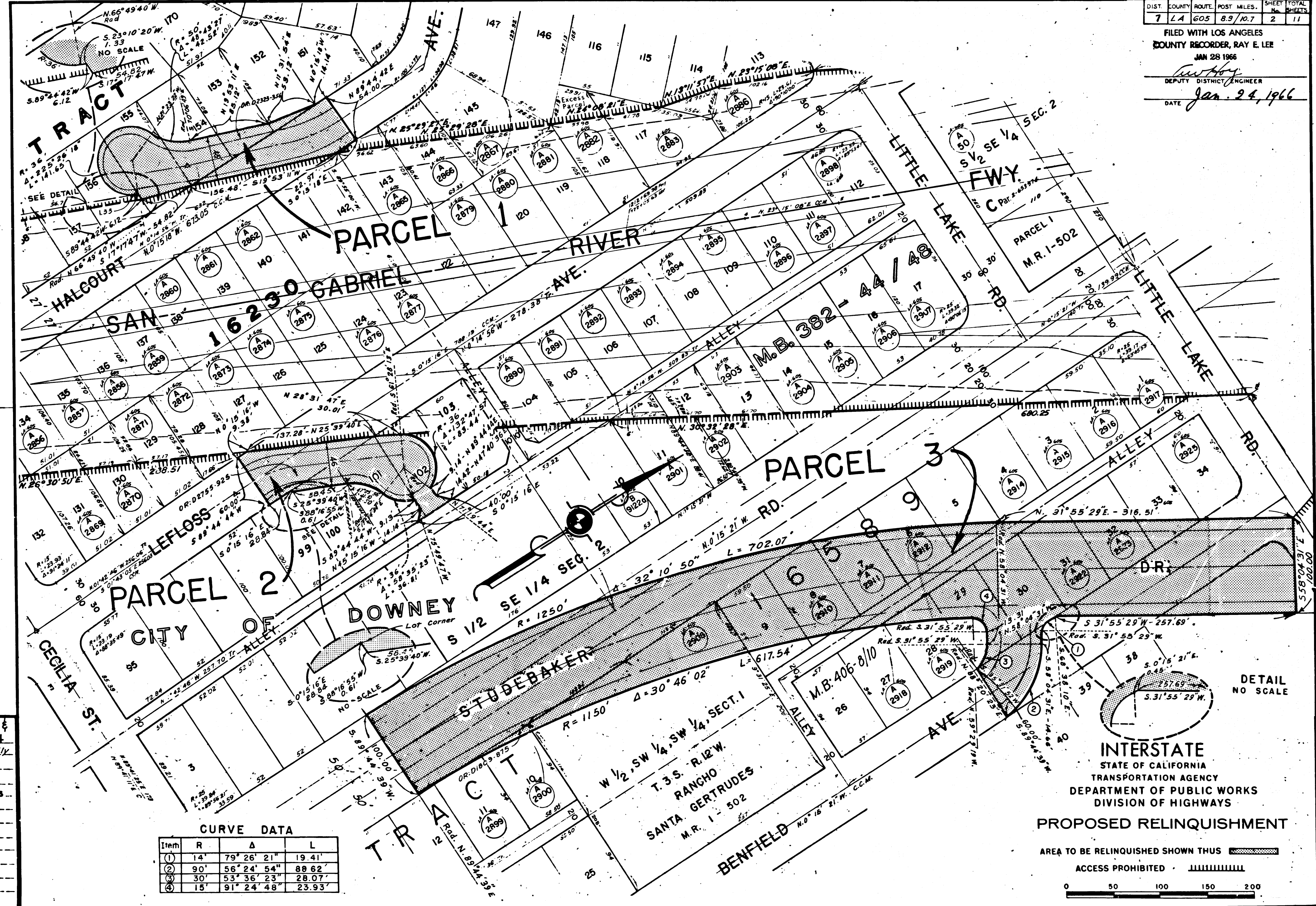
REL- 393
 394
 DRYN BY *R.F.*
 C.L.C. BY *M.M.*
 CRD BY *J.D.*
 BASE MAP NO'S
E-1261 & E-1262
 REF. MAP NO'S
 AS BUILT NO'S
156-17

DIST.	COUNTY	ROUTE	POST MILES.	SHEET No.	TOTAL SHEETS
7	LA	605	8.9/10.7	2	11

FILED WITH LOS ANGELES COUNTY RECORDER, RAY E. LEE
JAN 28 1966

DEPUTY DISTRICT ENGINEER

DATE Jan. 24, 1966



393 &
REL- 394
DWN BY R. Kelly
CLC BY M. M.
CKD BY J. D.
BASE MAP NOS.
F-1961
F-1962
REF. MAP NOS.
AS BUILT NOS.
156-17

CURVE DATA

Item	R	Δ	L
①	14'	79° 26' 21"	19.41'
②	90'	56° 24' 54"	88.62'
③	30'	53° 36' 23"	28.07'
④	15'	91° 24' 48"	23.93'

DETAIL NO SCALE

INTERSTATE
STATE OF CALIFORNIA
TRANSPORTATION AGENCY
DEPARTMENT OF PUBLIC WORKS
DIVISION OF HIGHWAYS

PROPOSED RELINQUISHMENT

AREA TO BE RELINQUISHED SHOWN THUS

ACCESS PROHIBITED

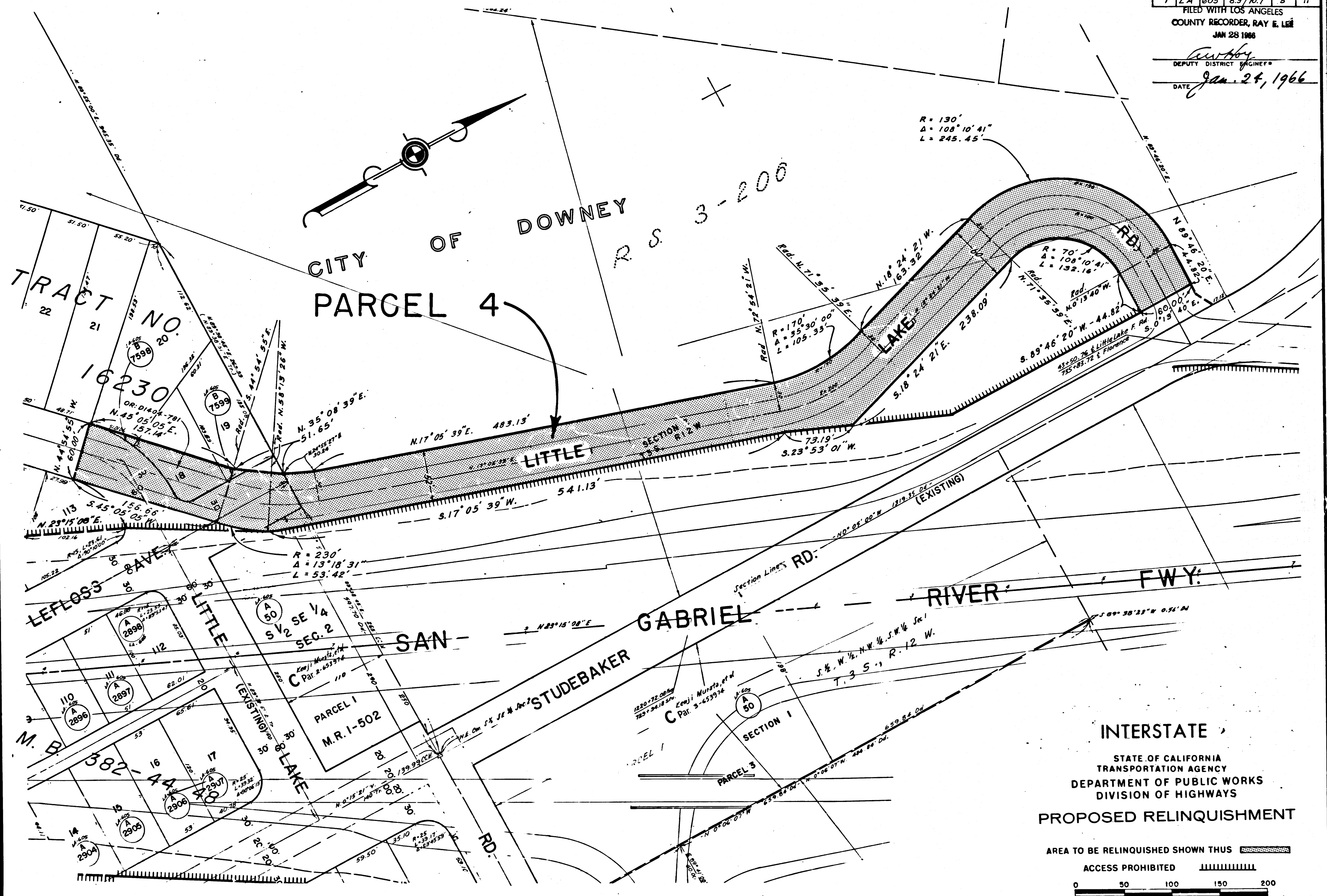
0 50 100 150 200

DIST.	COUNTY	ROUTE	POST MILES	SHEET NO.	TOTAL SHEETS
7	LA	605	8.9/10.7	3	11

FILED WITH LOS ANGELES
 COUNTY RECORDER, RAY E. LEE
 JAN 28 1966

DEPUTY DISTRICT ENGINEER
Ray E. Lee

DATE Jan. 24, 1966



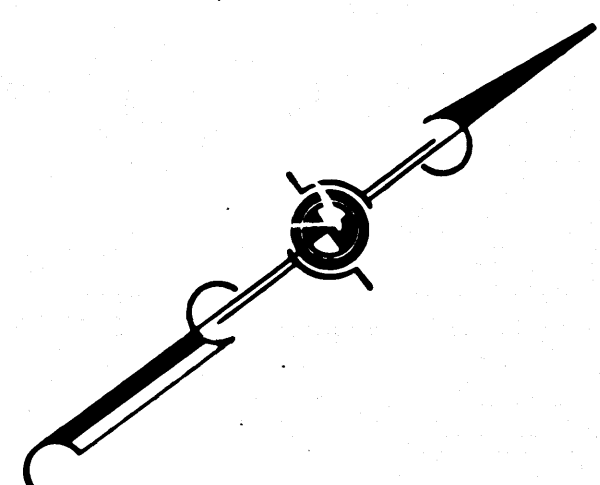
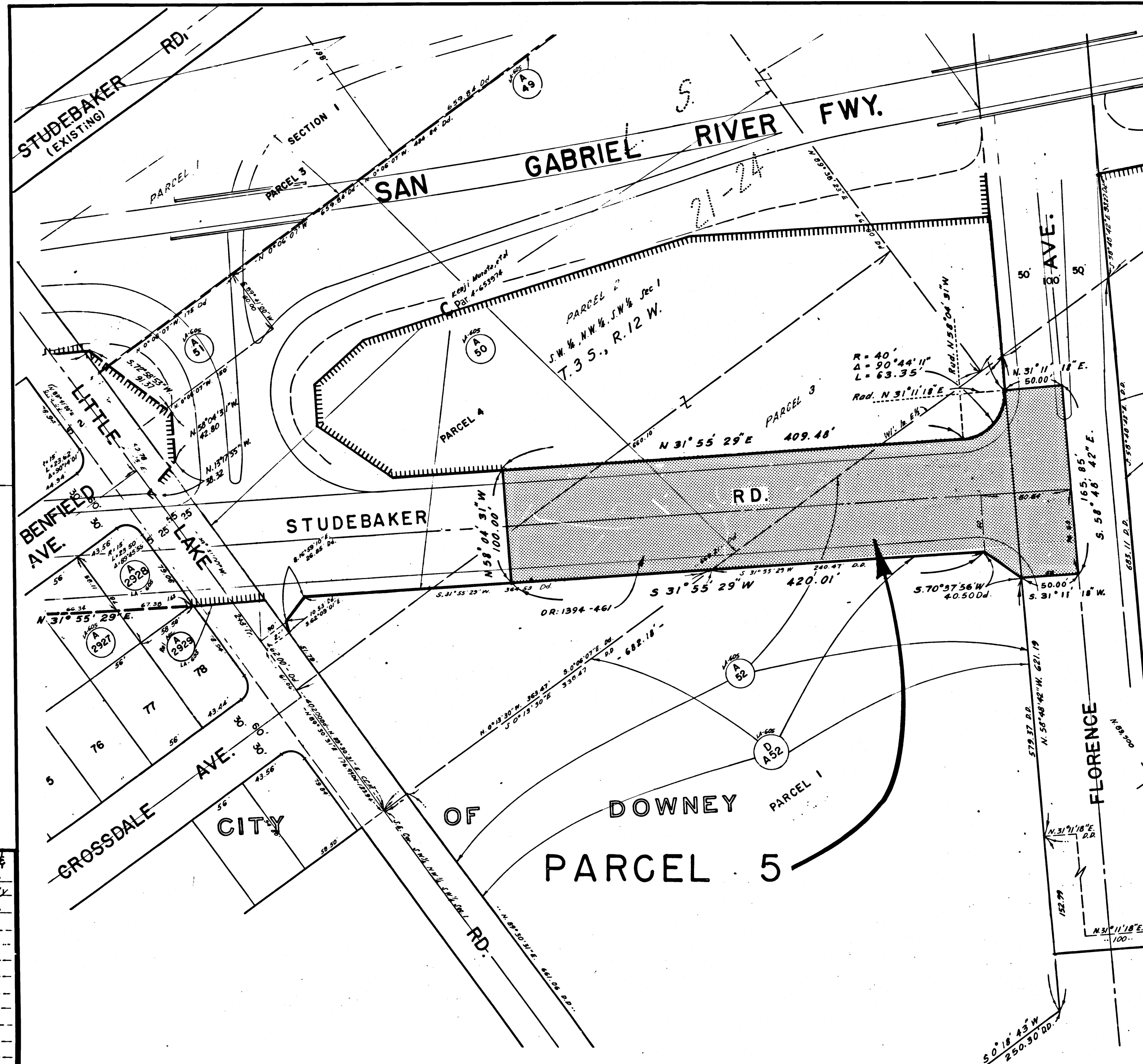
393 &
 REL- 394
 DRN BY E. Kelly
 CLC BY M.M.
 CKD BY J.D.
 BASE MAP NOS
 E-1961 E
 F-1962
 REF. MAP NOS
 AS BUILT NOS
 156-17

INTERSTATE
 STATE OF CALIFORNIA
 TRANSPORTATION AGENCY
 DEPARTMENT OF PUBLIC WORKS
 DIVISION OF HIGHWAYS
 PROPOSED RELINQUISHMENT
 AREA TO BE RELINQUISHED SHOWN THUS [Hatched Box]
 ACCESS PROHIBITED [Hatched Box]
 0 50 100 150 200

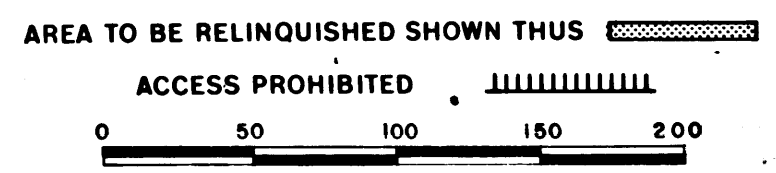
DIST.	COUNTY	ROUTE	POST MILES	SHEET No.	TOTAL SHEETS
7	LA	99	8.30	46	11

COUNTY RECORDER, RAY E. LEE
JAN 28 1966

Author
DEPUTY DISTRICT ENGINEER
Jan 24, 1966



INTERSTATE
 STATE OF CALIFORNIA
 TRANSPORTATION AGENCY
 DEPARTMENT OF PUBLIC WORKS
 DIVISION OF HIGHWAYS
PROPOSED RELINQUISHMENT



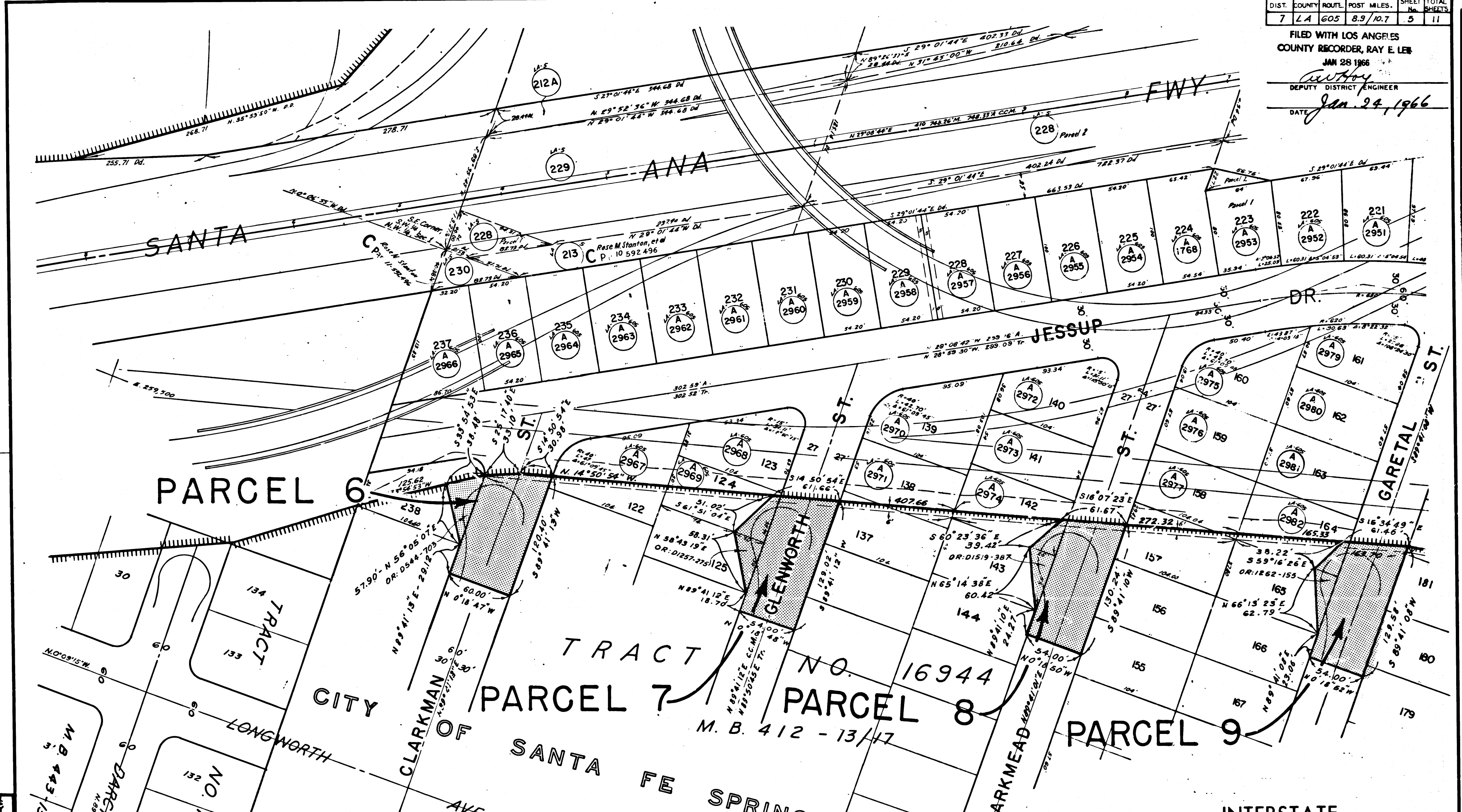
REL- 393 & 394
 DRYN BY *B. Kelly*
 C.L.C. BY *M.M.*
 CRD BY *J.D.*
 BASE MAP NOS
E-1901 E
F-1962
 REF. MAP NOS
 AS BUILT NOS
156-17

DIST.	COUNTY	ROUTE	POST MILES	SHEET No.	TOTAL SHEETS
7	LA	605	8.9/10.7	5	11

FILED WITH LOS ANGELES COUNTY RECORDER, RAY E. LEW
JAN 28 1966

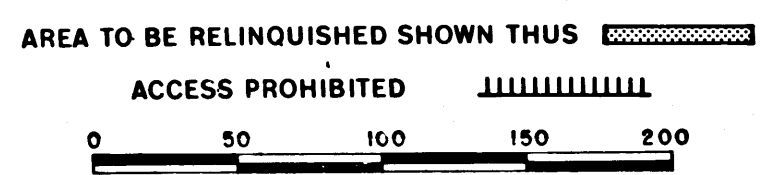
DEPUTY DISTRICT ENGINEER

DATE Jan. 24, 1966



REL- 393 & 394
DRN BY R. Kelly
C/LC BY M.M.
CKD BY J.D.
BASE MAP NOS...
E-1991 E
F-1962
REF. MAP NOS...
AS BUILT NO'S...
15E-17

INTERSTATE
STATE OF CALIFORNIA
TRANSPORTATION AGENCY
DEPARTMENT OF PUBLIC WORKS
DIVISION OF HIGHWAYS
PROPOSED RELINQUISHMENT



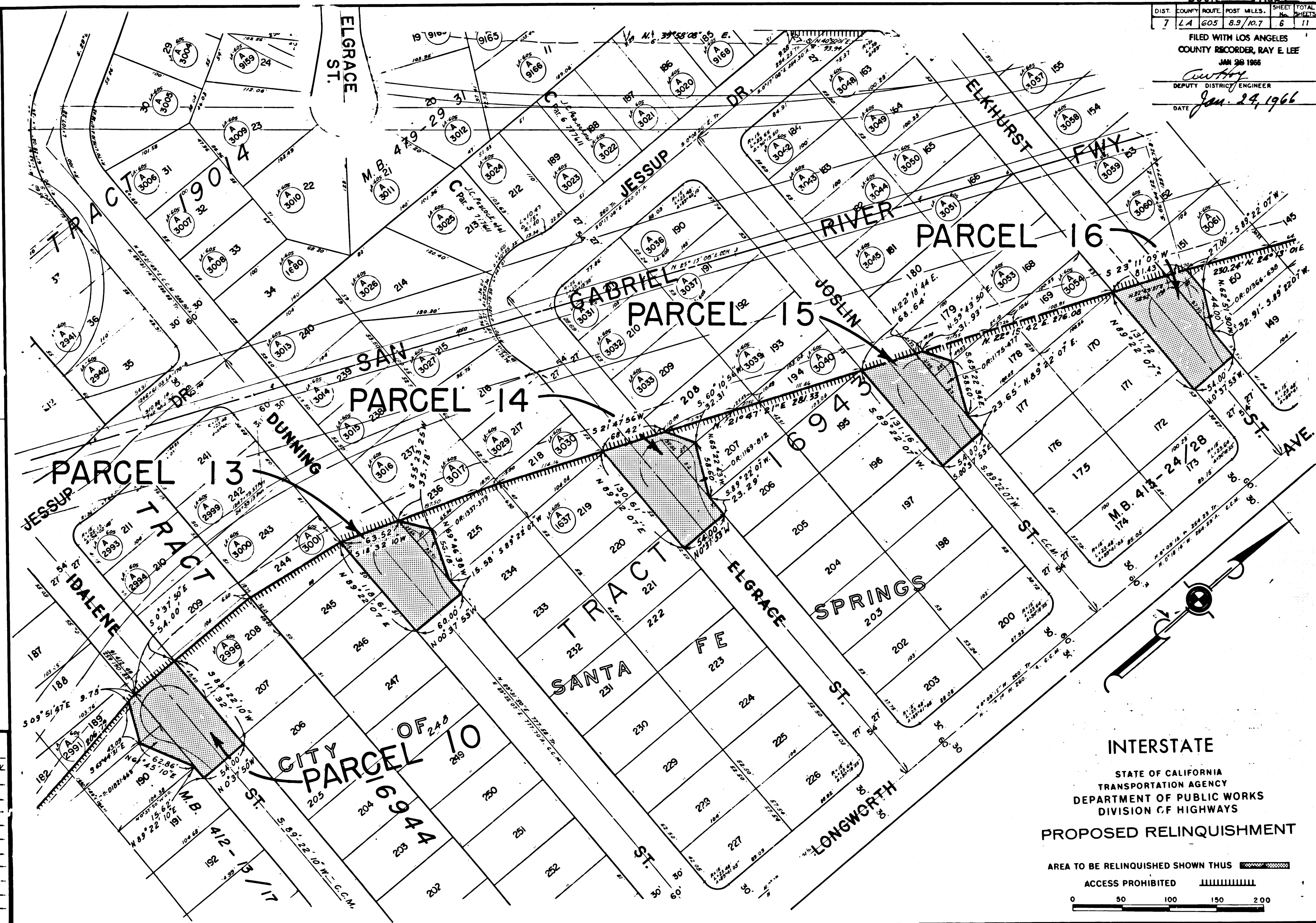
DIST.	COUNTY	ROUTE	POST MILES.	SHEET No.	TOTAL SHEETS
7	LA	605	8.9/10.7	6	11

FILED WITH LOS ANGELES COUNTY RECORDER, RAY E. LEE

JAN 26 1966

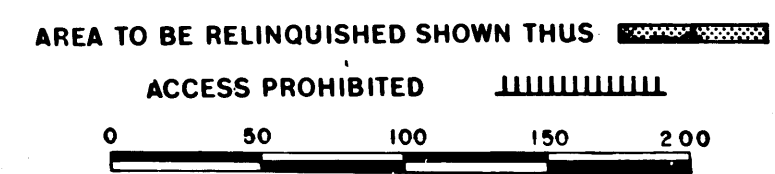
C. W. HAY DEPUTY DISTRICT ENGINEER

DATE Jan. 24, 1966



REL- 393 &
 394
 DWN BY A. KELLY
 C/LC BY M. M.
 CK'D BY J. D.
 BASE MAP NO'S
 1-1962
 REF. MAP NO'S
 AS BUILT NO'S
 156-17

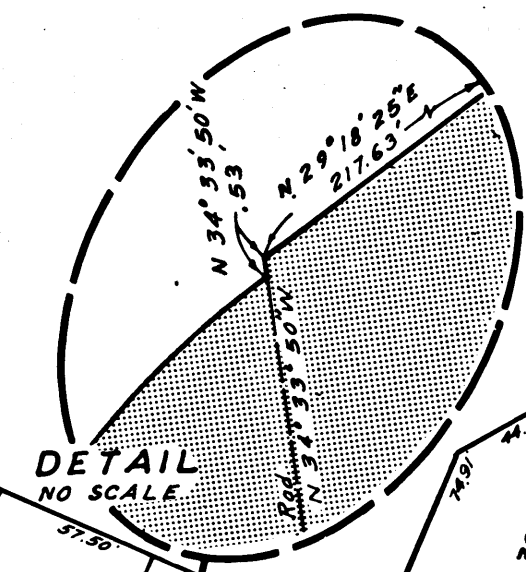
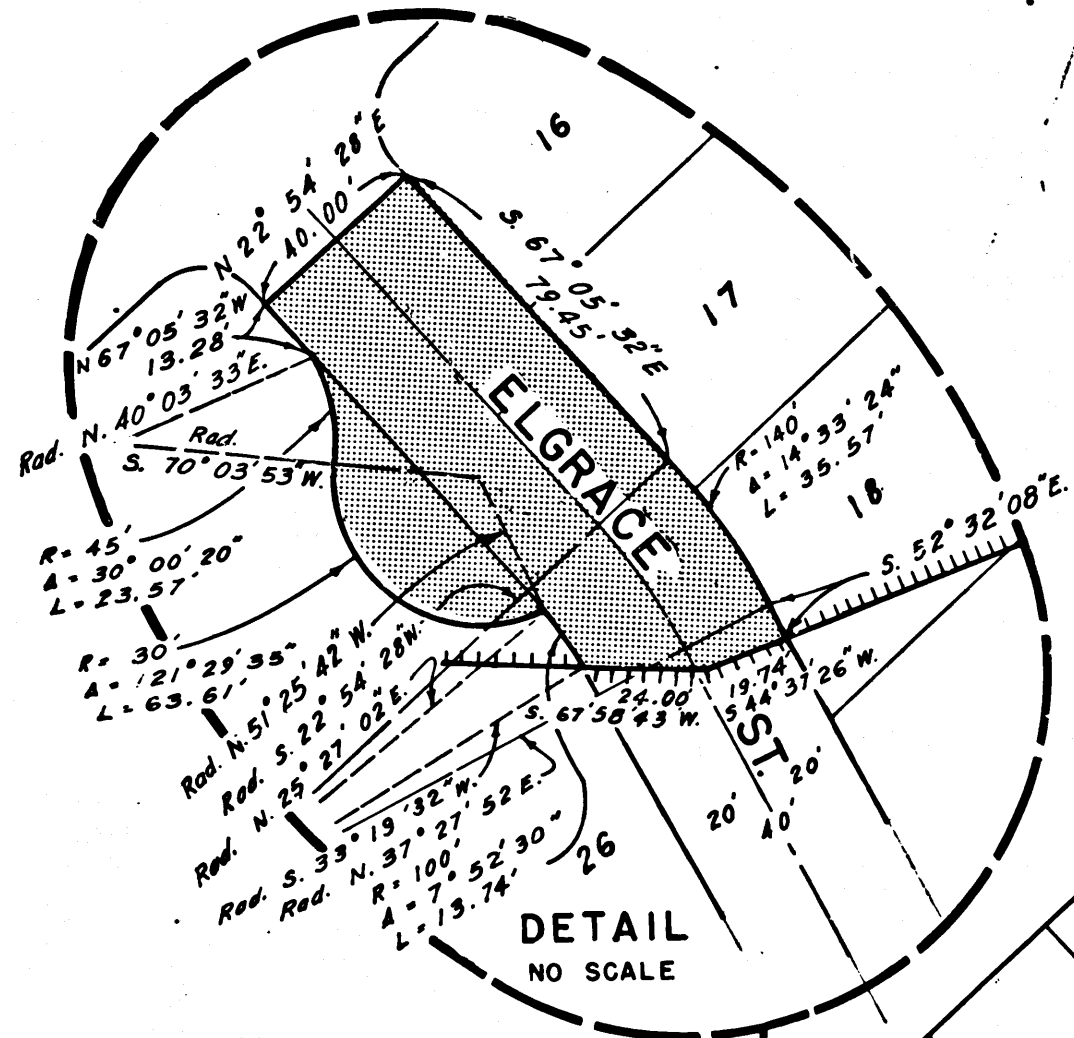
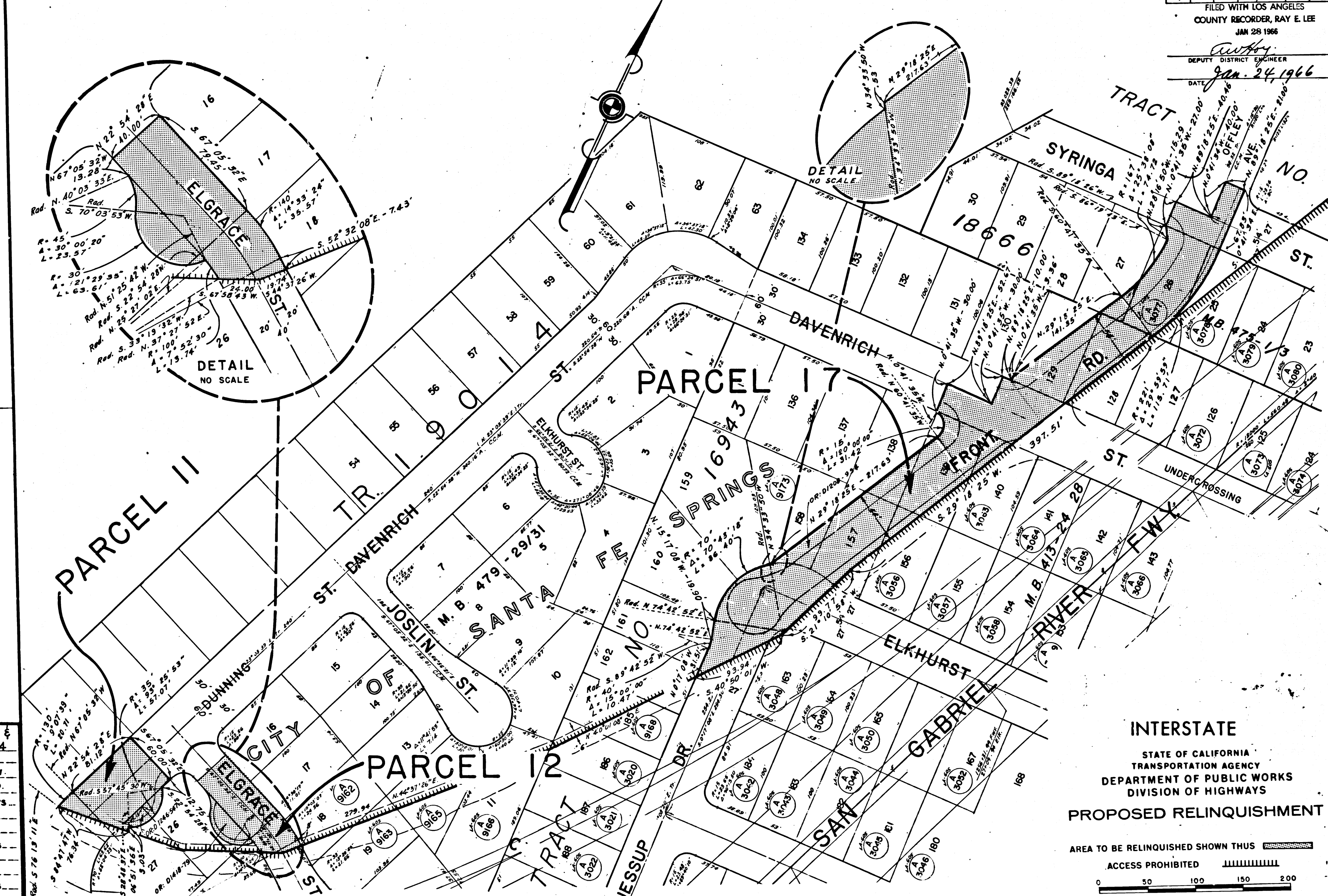
INTERSTATE
 STATE OF CALIFORNIA
 TRANSPORTATION AGENCY
 DEPARTMENT OF PUBLIC WORKS
 DIVISION OF HIGHWAYS
 PROPOSED RELINQUISHMENT



DIST.	COUNTY	ROUTE	POST MILES.	SHEET TOTAL
7	LA	605	8.9/10.7	7/11

FILED WITH LOS ANGELES
 COUNTY RECORDER, RAY E. LEE
 JAN 28 1966

DEPUTY DISTRICT ENGINEER
 DATE Jan. 24, 1966



REL-393 &
 394
 DRN BY R.C.
 C'LC BY M.M.
 CKD BY J.D.
 BASE MAP NO'S
 E-1981
 F-1962
 REF. MAP NO'S
 AS BUILT NO'S
 156-12

INTERSTATE
 STATE OF CALIFORNIA
 TRANSPORTATION AGENCY
 DEPARTMENT OF PUBLIC WORKS
 DIVISION OF HIGHWAYS
PROPOSED RELINQUISHMENT

AREA TO BE RELINQUISHED SHOWN THUS [shaded box]
 ACCESS PROHIBITED [hatched box]

0 50 100 150 200

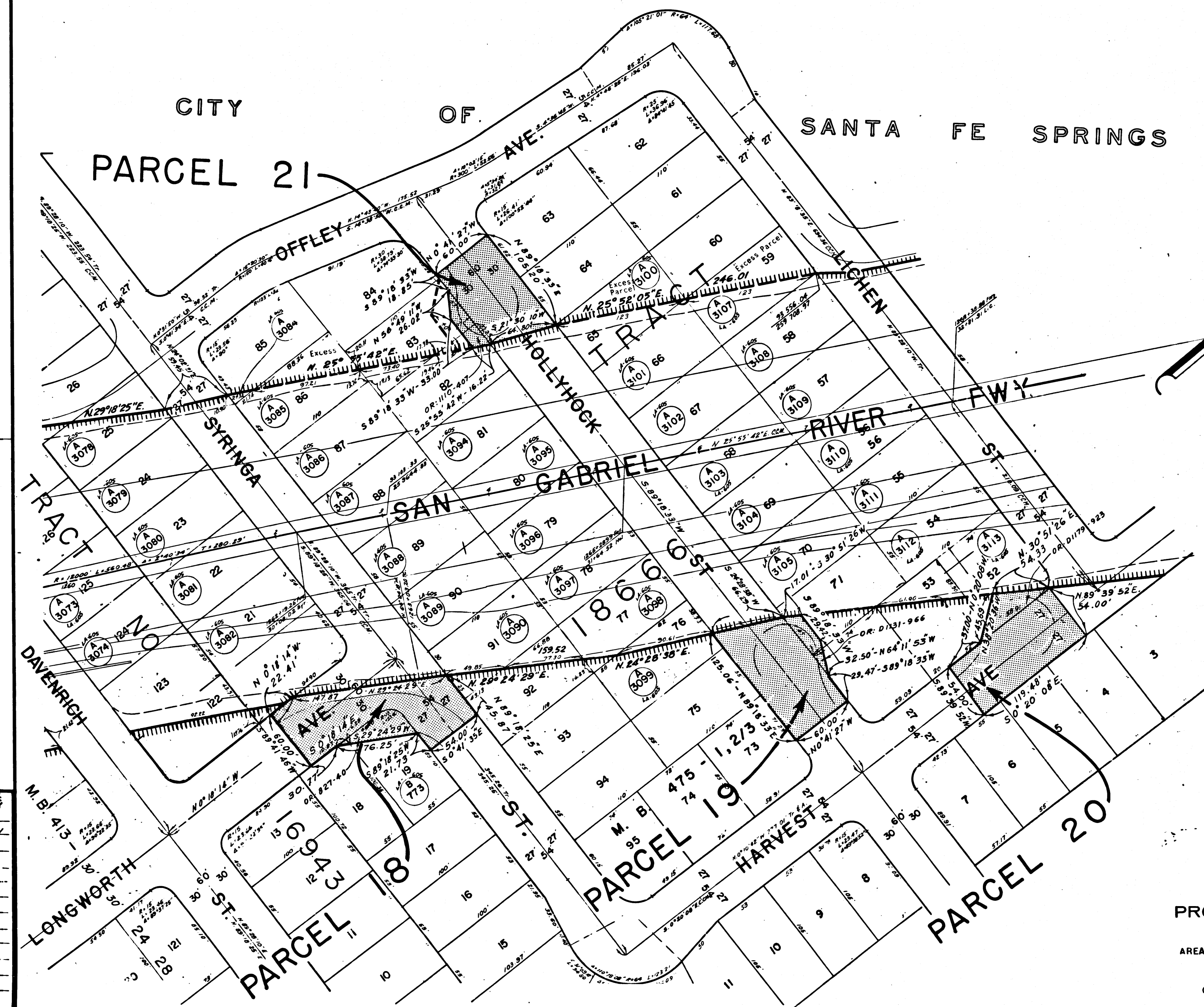
DIST.	COUNTY	ROUTE	POST MILES.	SHEET No.	TOTAL SHEETS
7	LA	605	8.9/10.7	8	11

FILED WITH LOS ANGELES
 COUNTY RECORDER, RAY E. LEE
 JAN 28 1966

DEPUTY DISTRICT ENGINEER

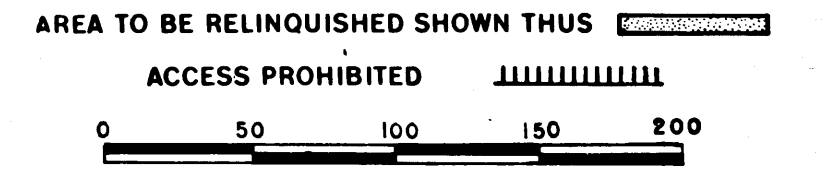
DATE Jan. 24, 1966

CITY OF SANTA FE SPRINGS



393 &
 REL- 394
 WRN BY R. Kelly
 C.L.C. BY M. M.
 CKD BY J. D.
 BASE MAP NOS.
 E-1961 &
 F-1962
 REF. MAP NOS.
 AS BUILT NOS.
 156-17

INTERSTATE
 STATE OF CALIFORNIA
 TRANSPORTATION AGENCY
 DEPARTMENT OF PUBLIC WORKS
 DIVISION OF HIGHWAYS
 PROPOSED RELINQUISHMENT

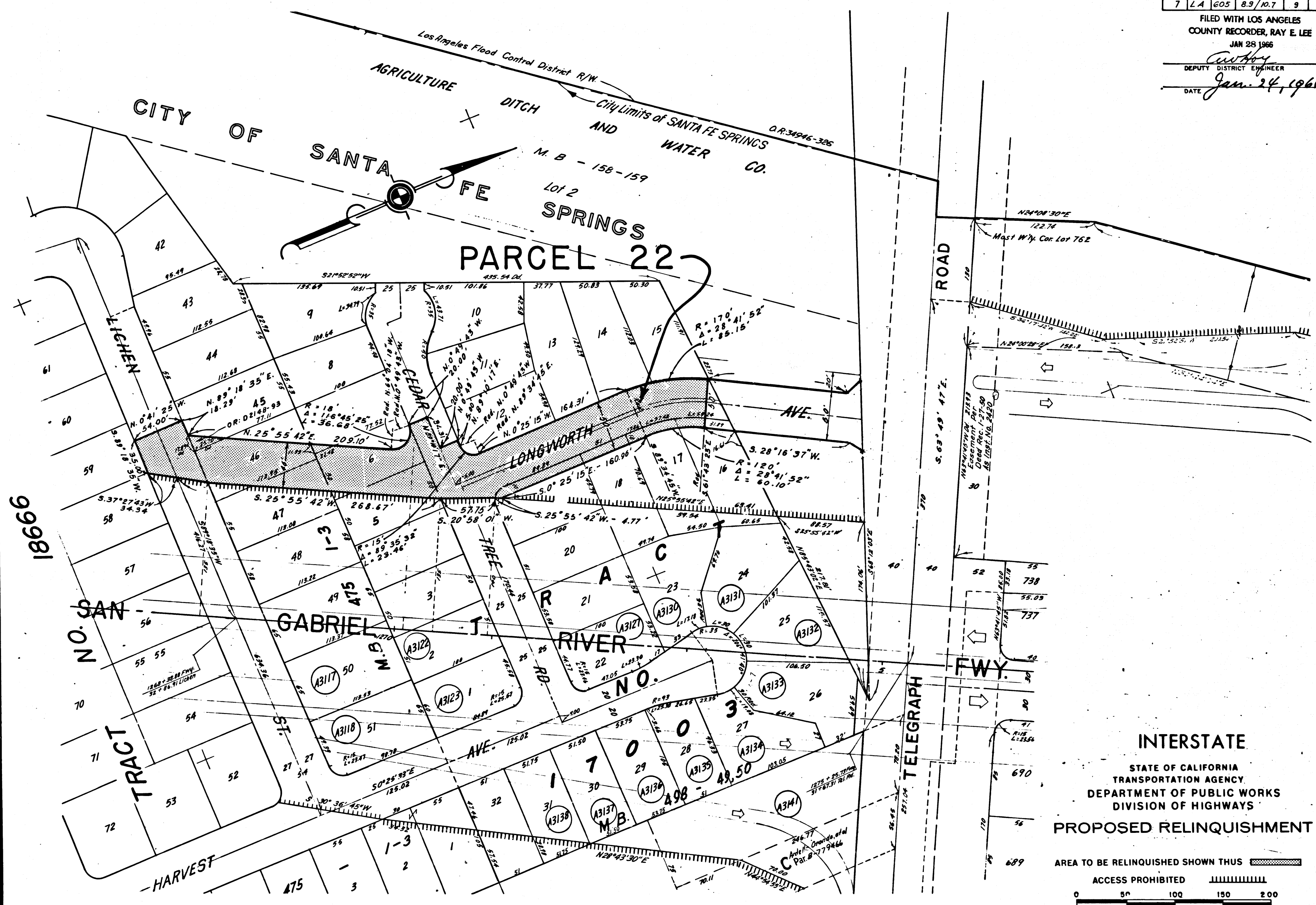


DIST.	COUNTY	ROUTE	POST MILES	SHEET No.	TOTAL SHEETS
7	LA	605	8.9/10.7	9	11

FILED WITH LOS ANGELES
 COUNTY RECORDER, RAY E. LEE
 JAN 28 1966

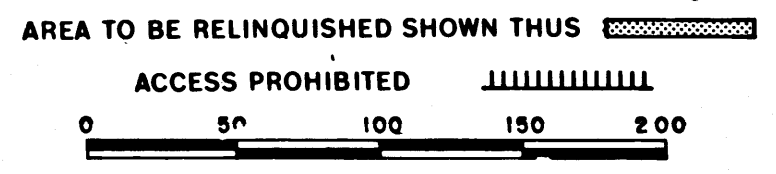
DEPUTY DISTRICT ENGINEER
Anthony

DATE *Jan. 24, 1966*

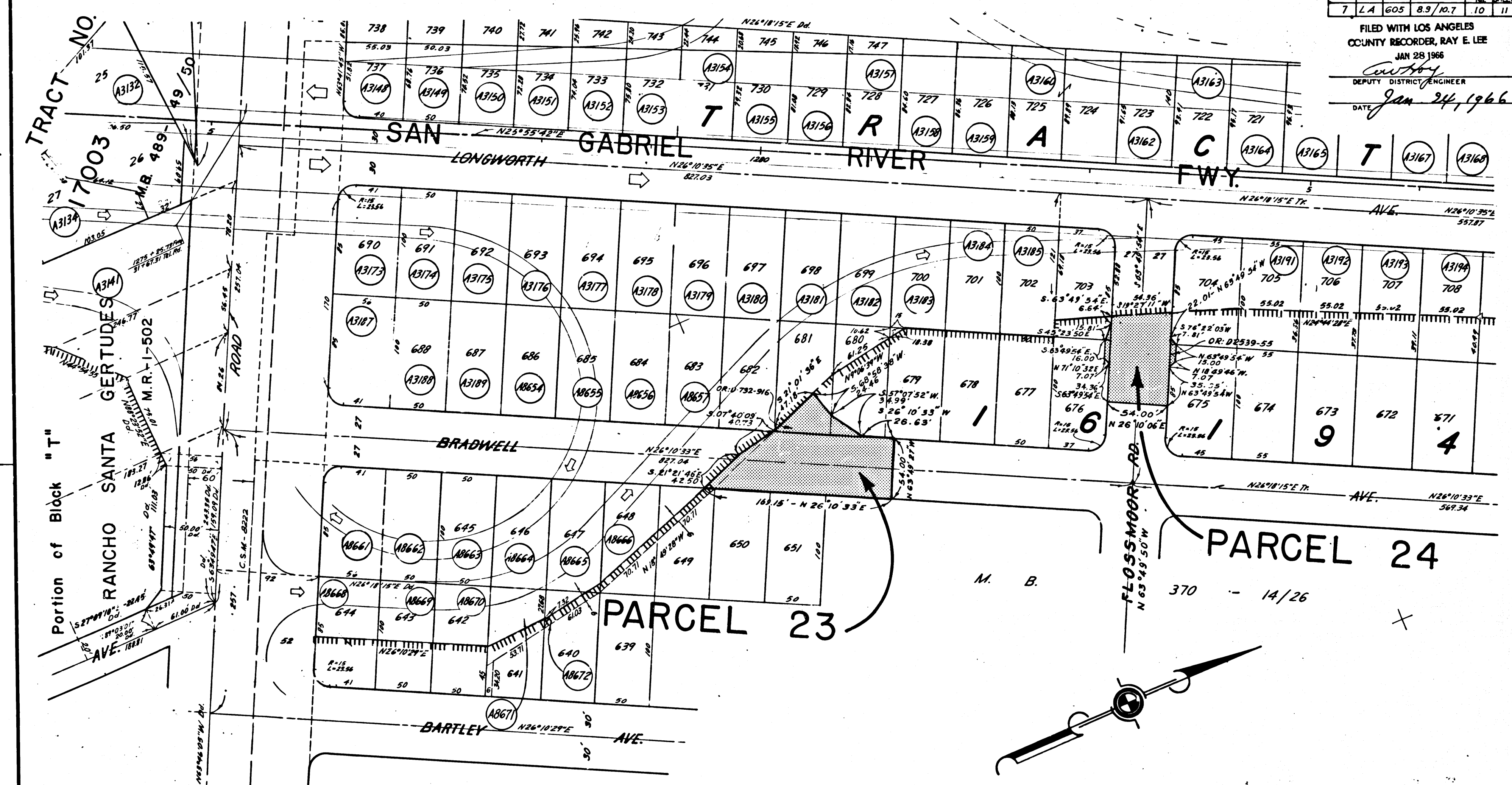


393 &
REL- 394
 DRYN BY *R. KELLY*
 C.L.C. BY *M.M.*
 CKD BY *J.D.*
 BASE MAP NOS.
E-1901 E
E-1902
 REF. MAP NOS.
 AS BUILT NOS.
158-17

INTERSTATE
 STATE OF CALIFORNIA
 TRANSPORTATION AGENCY
 DEPARTMENT OF PUBLIC WORKS
 DIVISION OF HIGHWAYS
PROPOSED RELINQUISHMENT


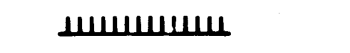


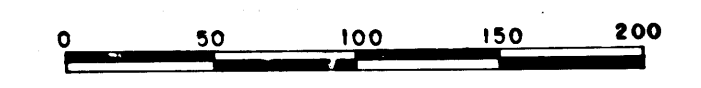
FILED WITH LOS ANGELES
 COUNTY RECORDER, RAY E. LEE
 JAN 28 1966
 DEPUTY DISTRICT ENGINEER
 DATE Jan 24, 1966



CITY OF SANTA FE SPRINGS

INTERSTATE
 STATE OF CALIFORNIA
 TRANSPORTATION AGENCY
 DEPARTMENT OF PUBLIC WORKS
 DIVISION OF HIGHWAYS
 PROPOSED RELINQUISHMENT

AREA TO BE RELINQUISHED SHOWN THUS 
 ACCESS PROHIBITED 



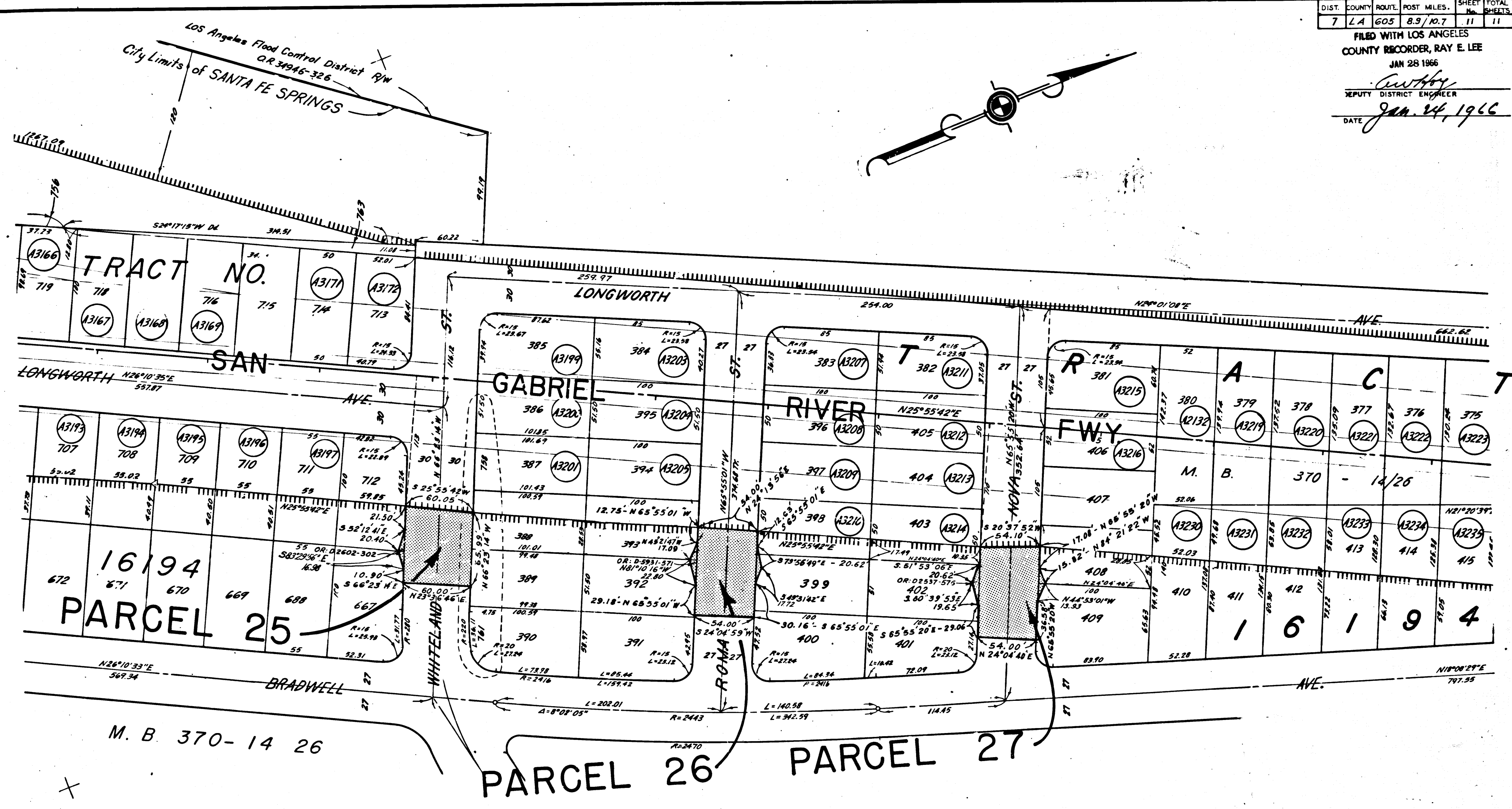
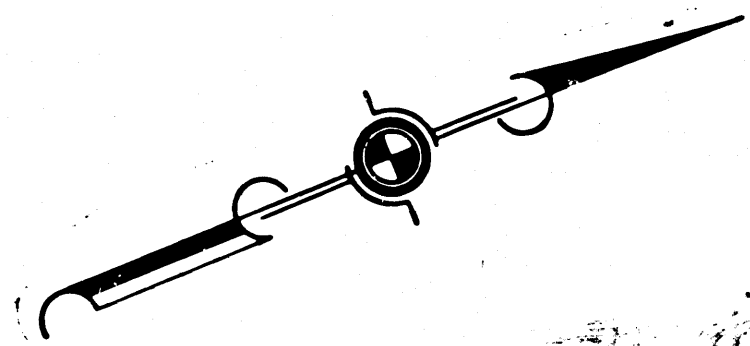
393 &
 REL- 394
 DRYN BY R. KELLY
 C.L.C. BY M. M.
 CRTD BY J. D.
 BASE MAP NO'S
 E-1981
 E-1982
 REF. MAP NO'S
 AS BUILT NO'S
 158-12

DIST.	COUNTY	ROUTE	POST MILES.	SHEET No.	TOTAL SHEETS
7	LA	605	8.9/10.7	11	11

FILED WITH LOS ANGELES COUNTY RECORDER, RAY E. LEE
JAN 28 1966

Ray E. Lee
DEPUTY DISTRICT ENGINEER

DATE *Jan. 24, 1966*



393 &
REL- 394
DWN BY *R. Kelly*
C.L.C. BY *M.M.*
CYD BY *J. D.*
BASE MAP NOS...
E-1991
E-1992
REF. MAP NOS...
AS BUILT NOS...
158-17

CITY OF SANTA FE SPRINGS

INTERSTATE
STATE OF CALIFORNIA
TRANSPORTATION AGENCY
DEPARTMENT OF PUBLIC WORKS
DIVISION OF HIGHWAYS
PROPOSED RELINQUISHMENT

