

020 3/27/66

BOOK 3		PAGE 57			
DIST	COUNTY	ROUTE	POST MILES	SHEET No.	TOTAL SHEETS
7	L.A.	10	11.4/12.5	1	6

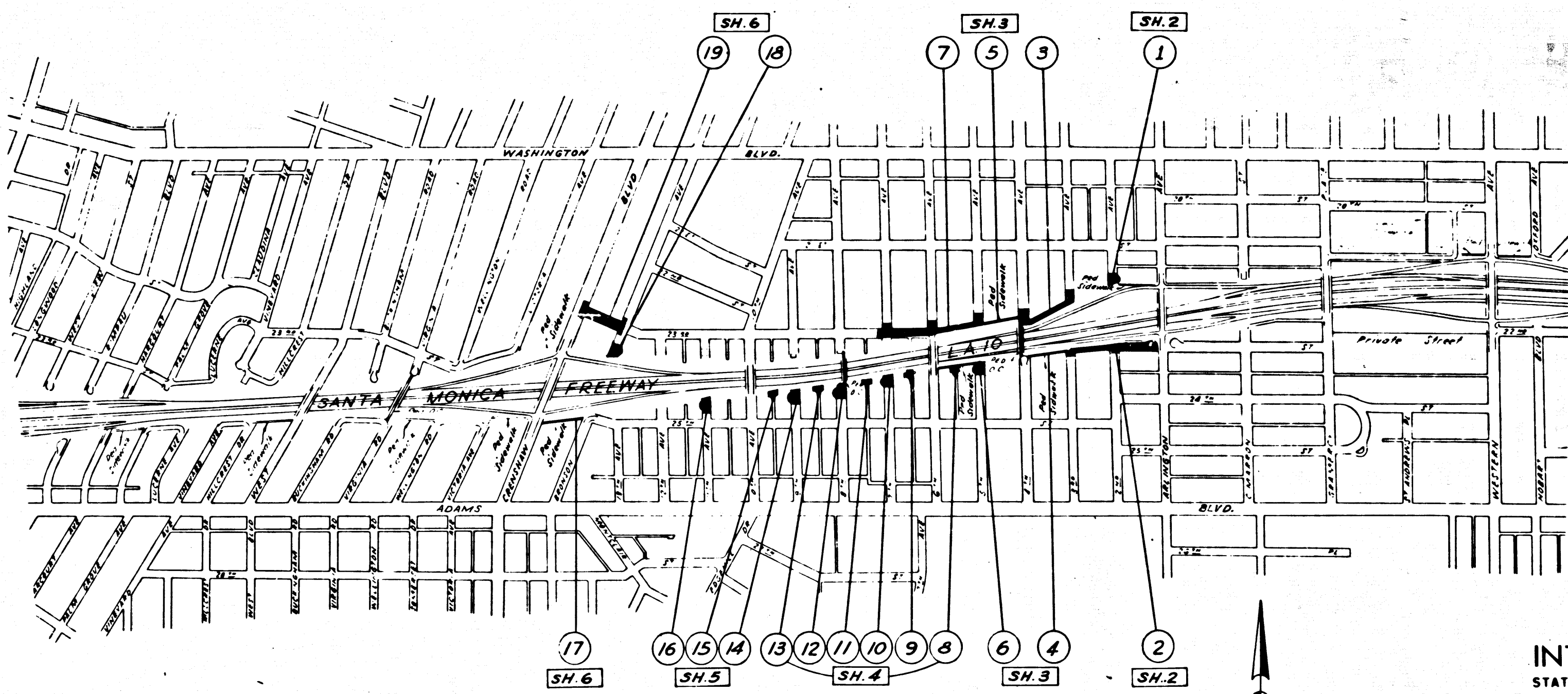
STATE OF CALIFORNIA
 TRANSPORTATION AGENCY
 DEPARTMENT OF PUBLIC WORKS
 DIVISION OF HIGHWAYS

2289
 RECORDED
 AT REQUEST OF
 DEPT. OF PUBLIC WORKS
 FEB. 9, 1966
 30 PAST 9 A.M.
 IN BOOK 3
 AT PAGE 57
 OF STATE HIGHWAY MAPS
 LOS ANGELES COUNTY, CALIF.
 RAY E. LEE
 COUNTY RECORDER
 Deputy

Anthony
 DEPUTY DISTRICT ENGINEER
 DATE *January 27, 1966*

RIGHT OF WAY MAPS OF
STATE HIGHWAY

in city of los angeles between arlington ave. and crenshaw blvd.



CITY OF LOS ANGELES

INTERSTATE
 STATE OF CALIFORNIA
 TRANSPORTATION AGENCY
 DEPARTMENT OF PUBLIC WORKS
 DIVISION OF HIGHWAYS
PROPOSED RELINQUISHMENT

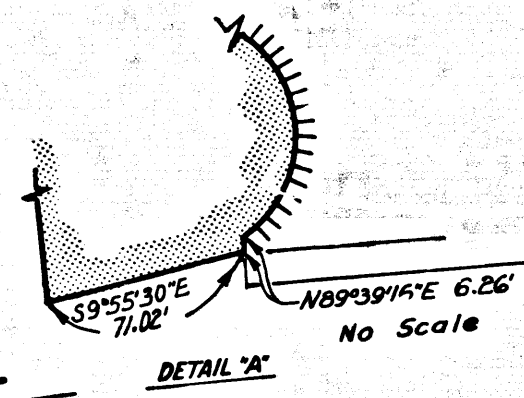
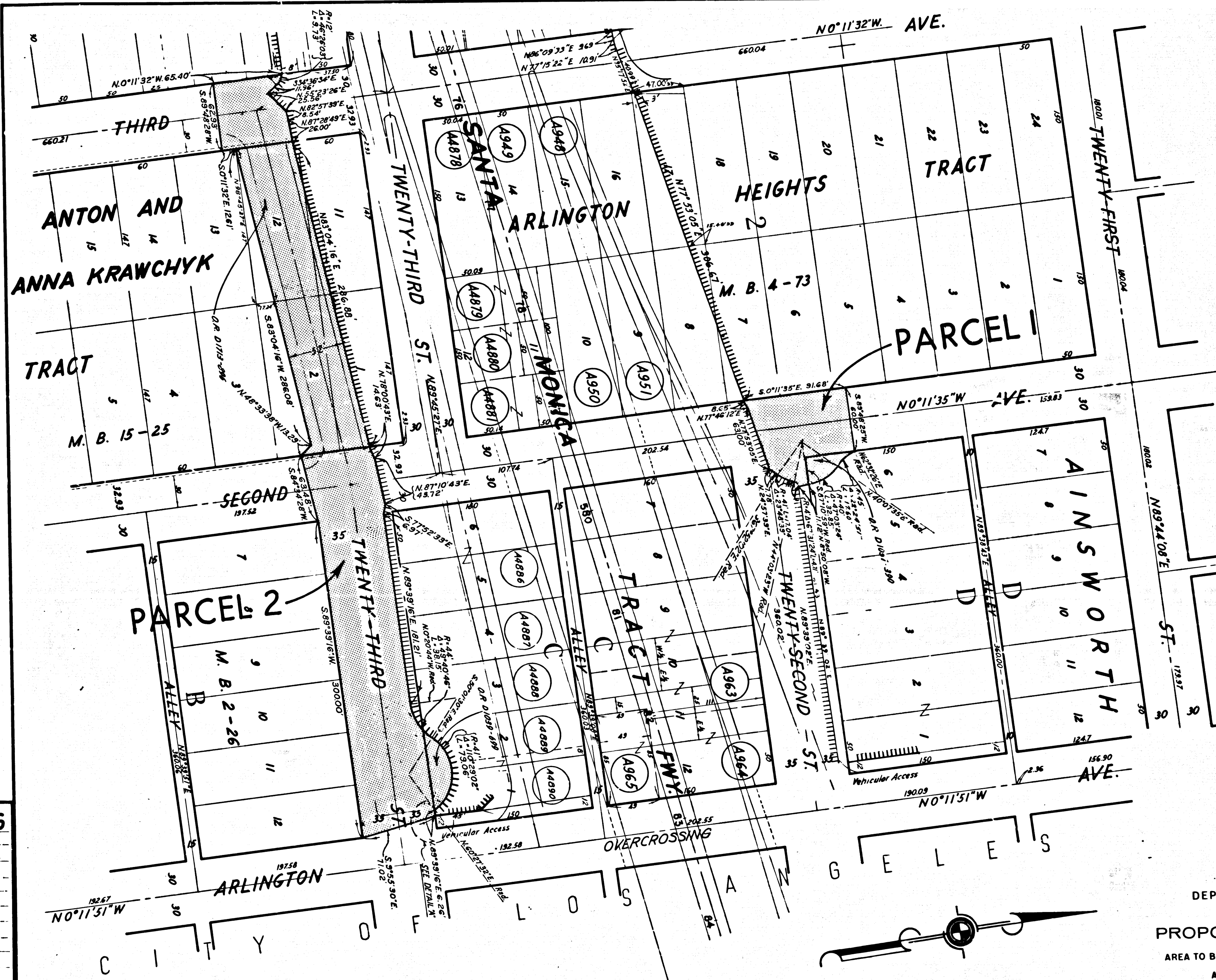
AREA TO BE RELINQUISHED SHOWN THUS
 PARCEL NOS. SHOWN THUS:
 SCALE
 600 1200 1800 2400

REL-466
 DRN BY *RSD*
 C'LC BY *RSD*
 CK'D BY *[Signature]*
 BASE MAP NO'S
 F 2075
 REF. MAP NO'S
 CCM 220.3
 AS BUILT NO'S
 148-4

DIST.	COUNTY	ROUTE	POST MILES	SHEET No.	TOTAL SHEETS
7	LA	10	11.4/12.3	2	6

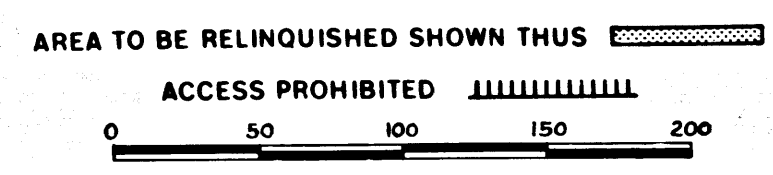
FILED WITH LOS ANGELES COUNTY RECORDER, RAY E. LEE
FEB 9 1966

awhoy
DEPUTY DISTRICT ENGINEER
DATE January 27, 1966



REL-466
DRN BY J.K.
CLC BY R.S.D.
CK'D BY *mm*
BASE MAP NO'S
E2075
REF. MAP NO'S
CCM220.3
AS BUILT NO'S
148-4

INTERSTATE
STATE OF CALIFORNIA
TRANSPORTATION AGENCY
DEPARTMENT OF PUBLIC WORKS
DIVISION OF HIGHWAYS
PROPOSED RELINQUISHMENT

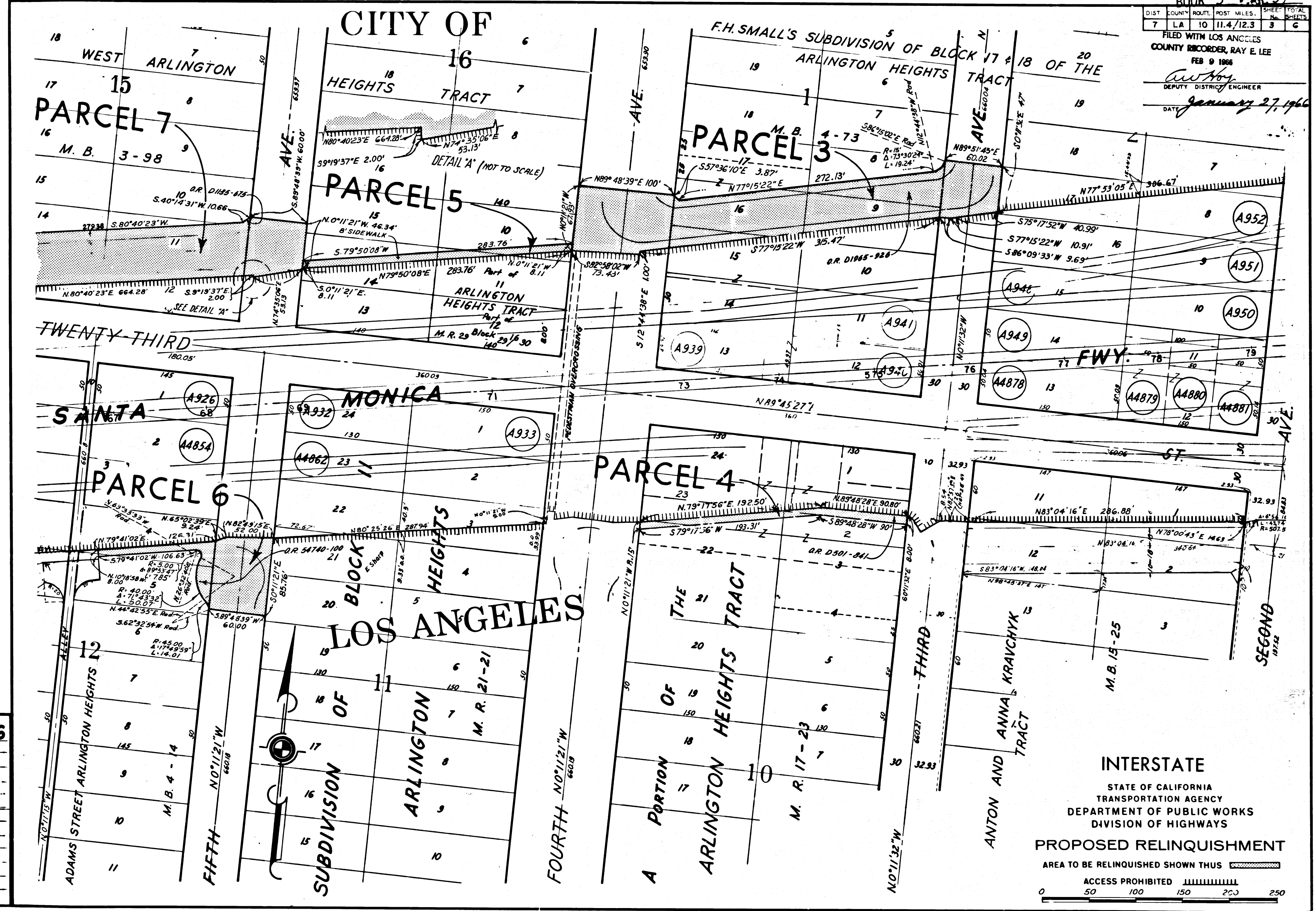


DIST	COUNTY	ROUTE	POST MILES	SHEET	TOTAL SHEETS
7	LA	10	11.4/12.3	3	6

FILED WITH LOS ANGELES COUNTY RECORDER, RAY E. LEE
FEB 9 1966

Ray E. Lee
DEPUTY DISTRICT ENGINEER

DATE *January 27, 1966*



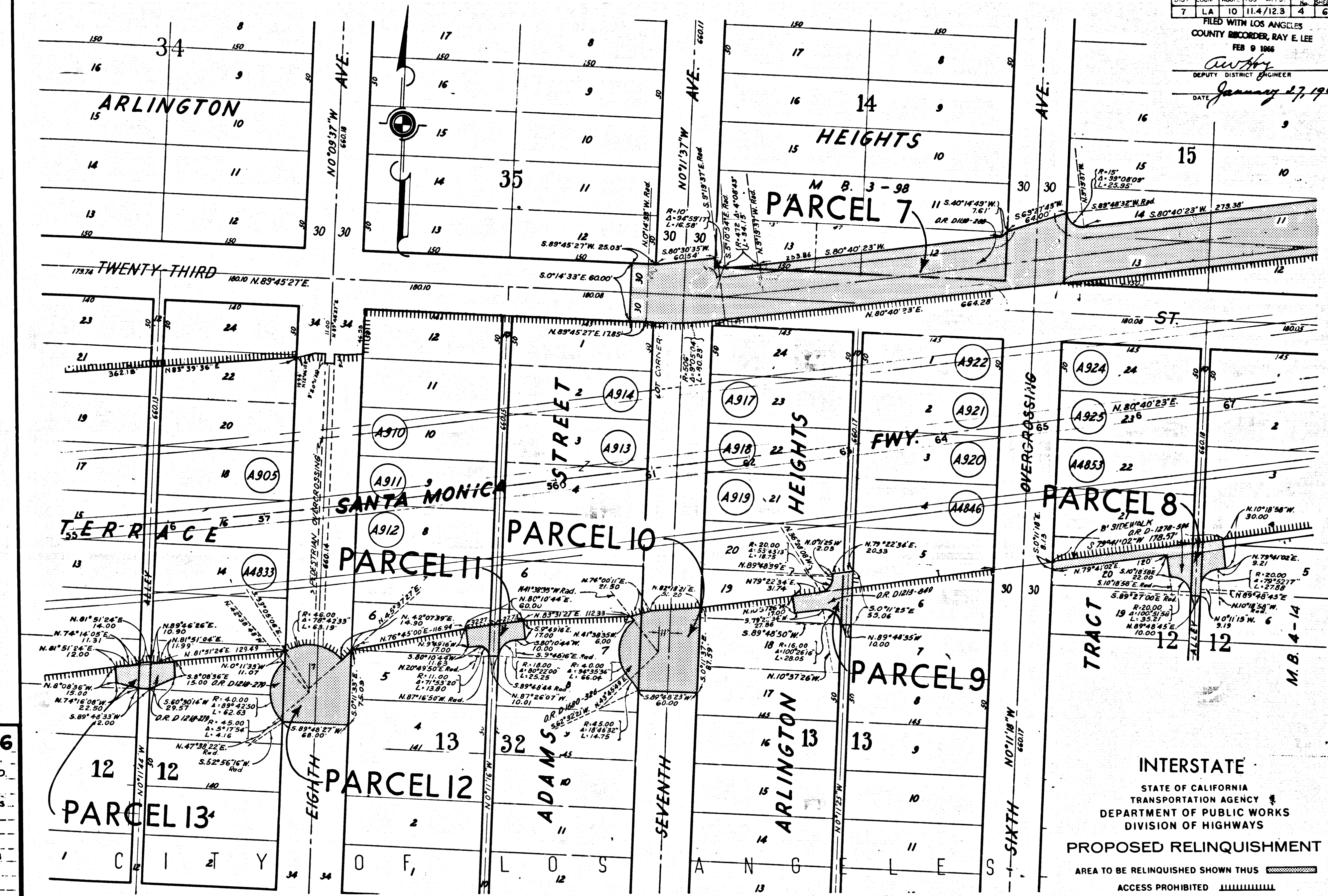
REL-466
 DRN BY J.K.
 C.L.C. BY R.S.D.
 CK'D BY M.D.
 BASE MAP NO'S...
 F 2075
 REF. MAP NO'S...
 CCM 220.3
 AS BUILT NO'S...
 148-4

INTERSTATE
 STATE OF CALIFORNIA
 TRANSPORTATION AGENCY
 DEPARTMENT OF PUBLIC WORKS
 DIVISION OF HIGHWAYS
PROPOSED RELINQUISHMENT
 AREA TO BE RELINQUISHED SHOWN THUS [hatched pattern]
 ACCESS PROHIBITED [hatched pattern]
 0 50 100 150 200 250

DIST	COUNTY	ROUTE	POS. M.I.S.	SHEET TOTAL
7	LA	10	11.4/12.3	4 6

FILED WITH LOS ANGELES
COUNTY RECORDER, RAY E. LEE
FEB 9 1966

Authy
DEPUTY DISTRICT ENGINEER
DATE *January 27, 1966*



REL-466
DRN BY J.K.
C/LC BY R.S.D.
CKD BY J.A.
BASE MAP NO'S
F.2075

REF. MAP NO'S
CCM2203

AS BUILT NO'S
148-4

INTERSTATE
STATE OF CALIFORNIA
TRANSPORTATION AGENCY
DEPARTMENT OF PUBLIC WORKS
DIVISION OF HIGHWAYS

PROPOSED RELINQUISHMENT

AREA TO BE RELINQUISHED SHOWN THUS

ACCESS PROHIBITED

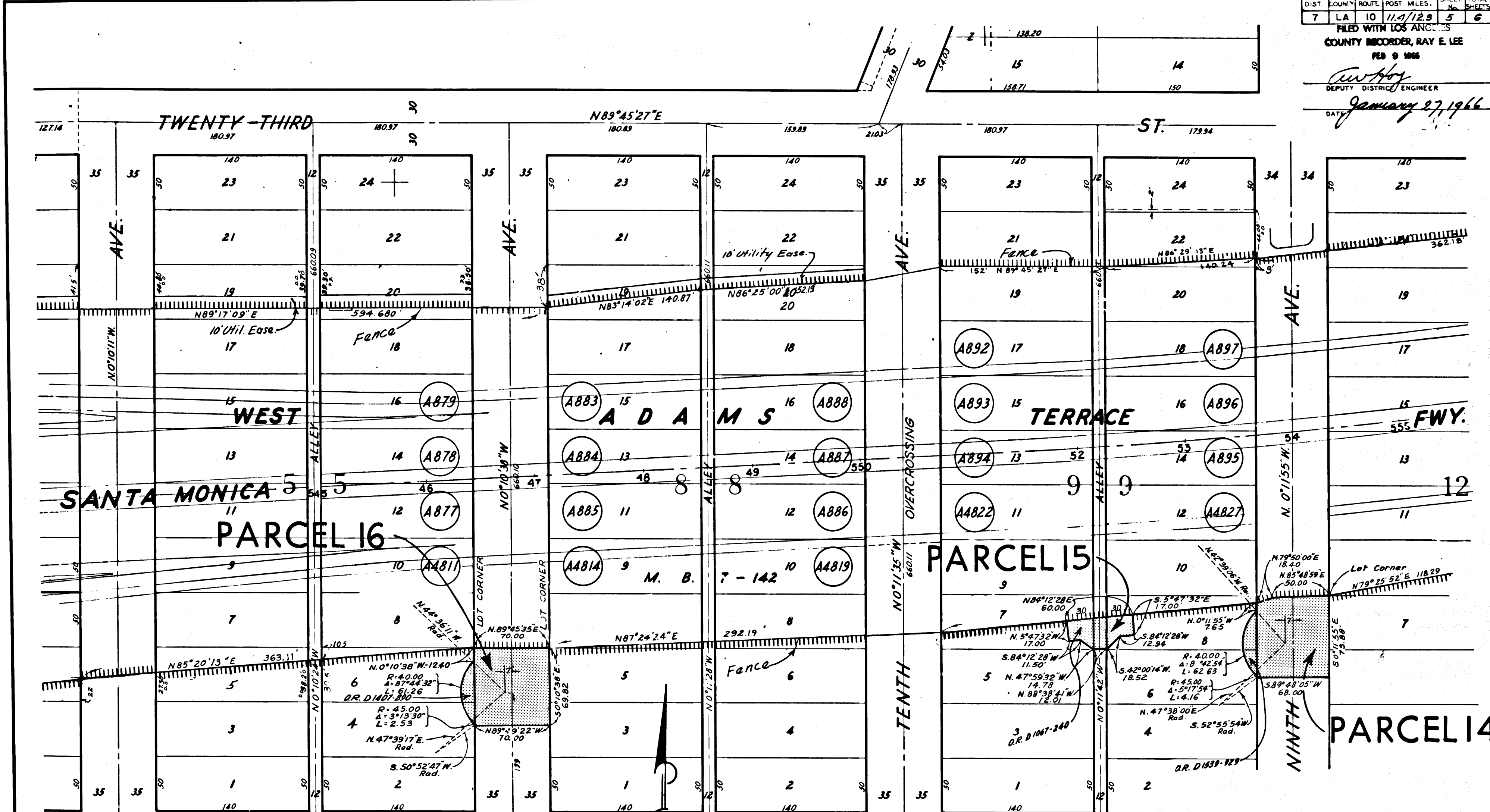
0 50 100 150 200

DIST	COUNTY	ROUTE	POST MILES.	SHEET No.	TOTAL SHEETS
7	LA	10	11.0/12.8	5	6

FILED WITH LOS ANGELES COUNTY RECORDER, RAY E. LEE
FEB 9 1966

Ray E. Lee
DEPUTY DISTRICT ENGINEER

DATE *January 27, 1966*



REL-466
DRN BY R. C.
C/LC BY R.S.D.
CK'D BY *[Signature]*
BASE MAP NO'S
F2075
REF. MAP NO'S
CCM 220.3
AS BUILT NO'S
148-4

INTERSTATE
STATE OF CALIFORNIA
TRANSPORTATION AGENCY
DEPARTMENT OF PUBLIC WORKS
DIVISION OF HIGHWAYS
PROPOSED RELINQUISHMENT
AREA TO BE RELINQUISHED SHOWN THUS ACCESS PROHIBITED
0 50 100 150 200

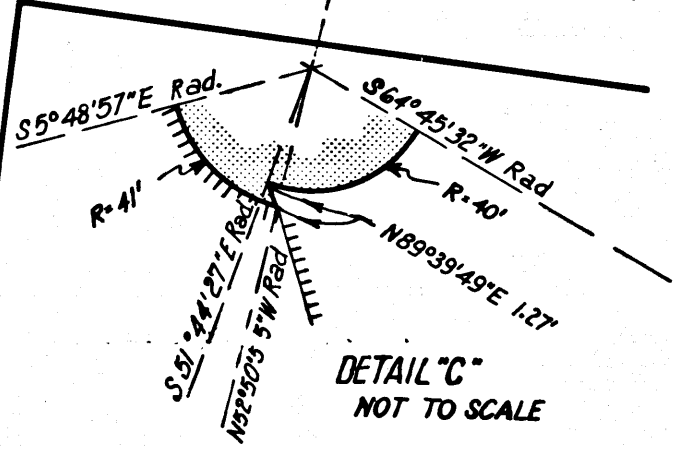
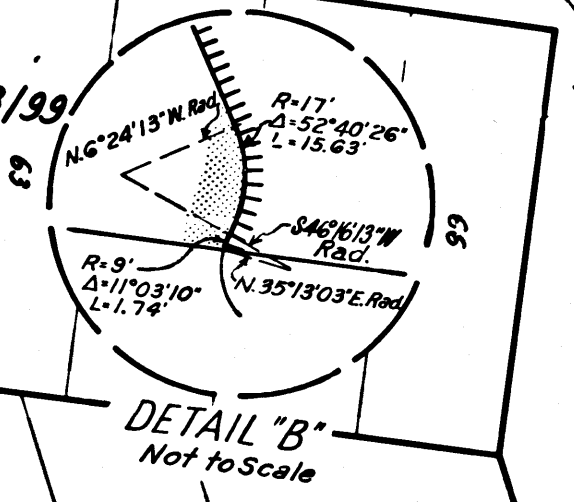
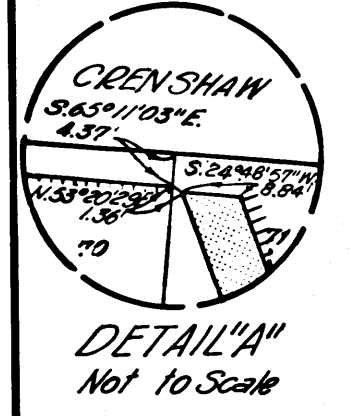
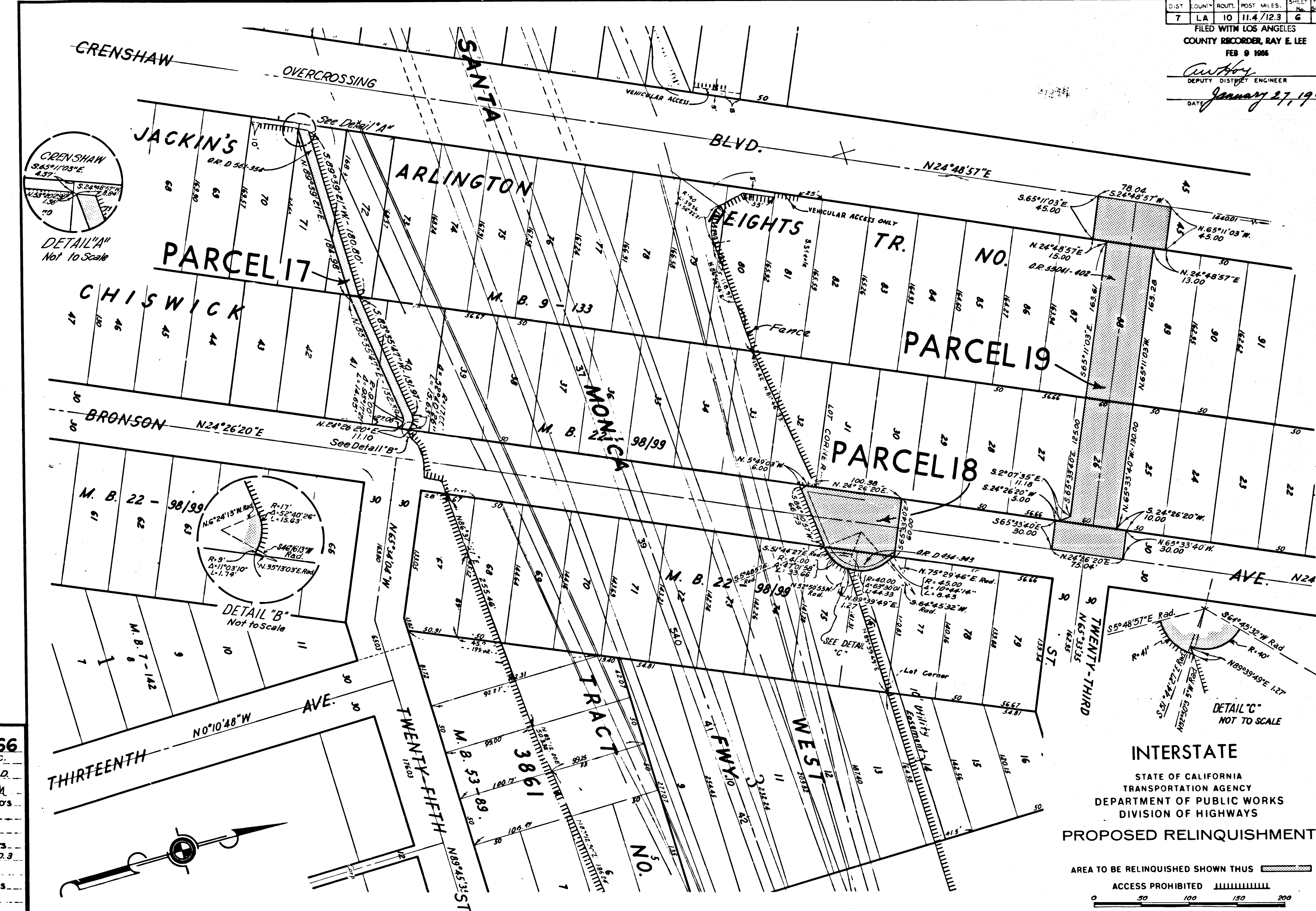
CITY OF LOS ANGELES

DIST.	COUNTY	ROUTE	POST MILES	SHEET NO.	TOTAL SHEETS
7	LA	10	11.4/12.3	6	6

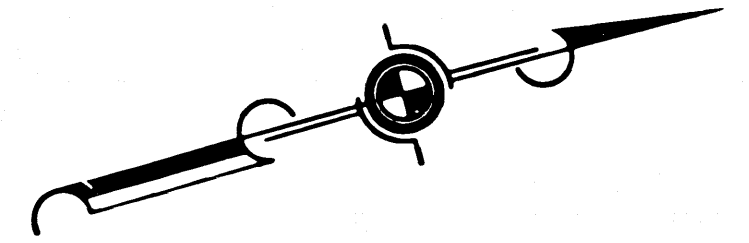
FILED WITH LOS ANGELES
 COUNTY RECORDER, RAY E. LEE
 FEB 9 1966

Anthony
 DEPUTY DISTRICT ENGINEER

DATE *January 27, 1966*



REL-466
 DWTN BY *R.C.*
 C/LC BY *R.S.O.*
 C/K'D BY *M.D.*
 BASE MAP NO'S...
F 2075
 REF. MAP NO'S...
CCM 220.3
 AS BUILT NO'S...
148-4



INTERSTATE
 STATE OF CALIFORNIA
 TRANSPORTATION AGENCY
 DEPARTMENT OF PUBLIC WORKS
 DIVISION OF HIGHWAYS
PROPOSED RELINQUISHMENT

