

3/63-70

BOOK 3 PAGE 63				
DIST.	COUNTY	ROUTE	POST MILES.	SHEET TOTAL
7	L.A.	10	12.9/14.3	1 8

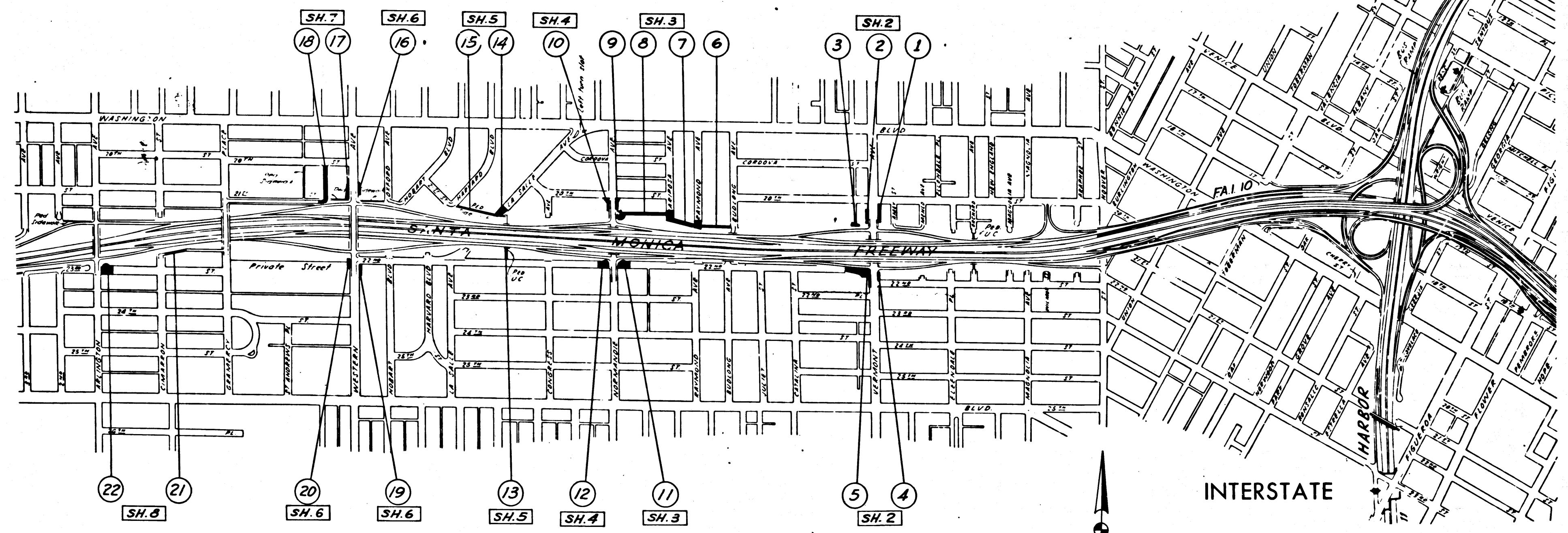
STATE OF CALIFORNIA  
 TRANSPORTATION AGENCY  
 DEPARTMENT OF PUBLIC WORKS  
 DIVISION OF HIGHWAYS  
 RIGHT OF WAY MAPS OF  
 STATE HIGHWAY

2240

*C.W. Lee*  
 DEPUTY DISTRICT ENGINEER  
 DATE *January 26, 1966*

RECORDED  
 AT REQUEST OF  
 DEPT. OF PUBLIC WORKS  
 FEB. 9 1966  
 30 MIN. PAST 9 A.M.  
 BOOK 3  
 AT PAGE 63  
 OF STATE HIGHWAY MAPS  
 LOS ANGELES COUNTY, CALIF.  
 RAY E. LEE  
 COUNTY RECORDER  
 BY *C. M. ...* FREE

in city of los angeles between hoover street and arlington ave.



CITY OF LOS ANGELES

INTERSTATE

STATE OF CALIFORNIA  
 TRANSPORTATION AGENCY  
 DEPARTMENT OF PUBLIC WORKS  
 DIVISION OF HIGHWAYS  
 PROPOSED RELINQUISHMENT

AREA TO BE RELINQUISHED SHOWN THUS   
 PARCEL NOS. SHOWN THUS:

SCALE  
 0 600 1200 1800 2400

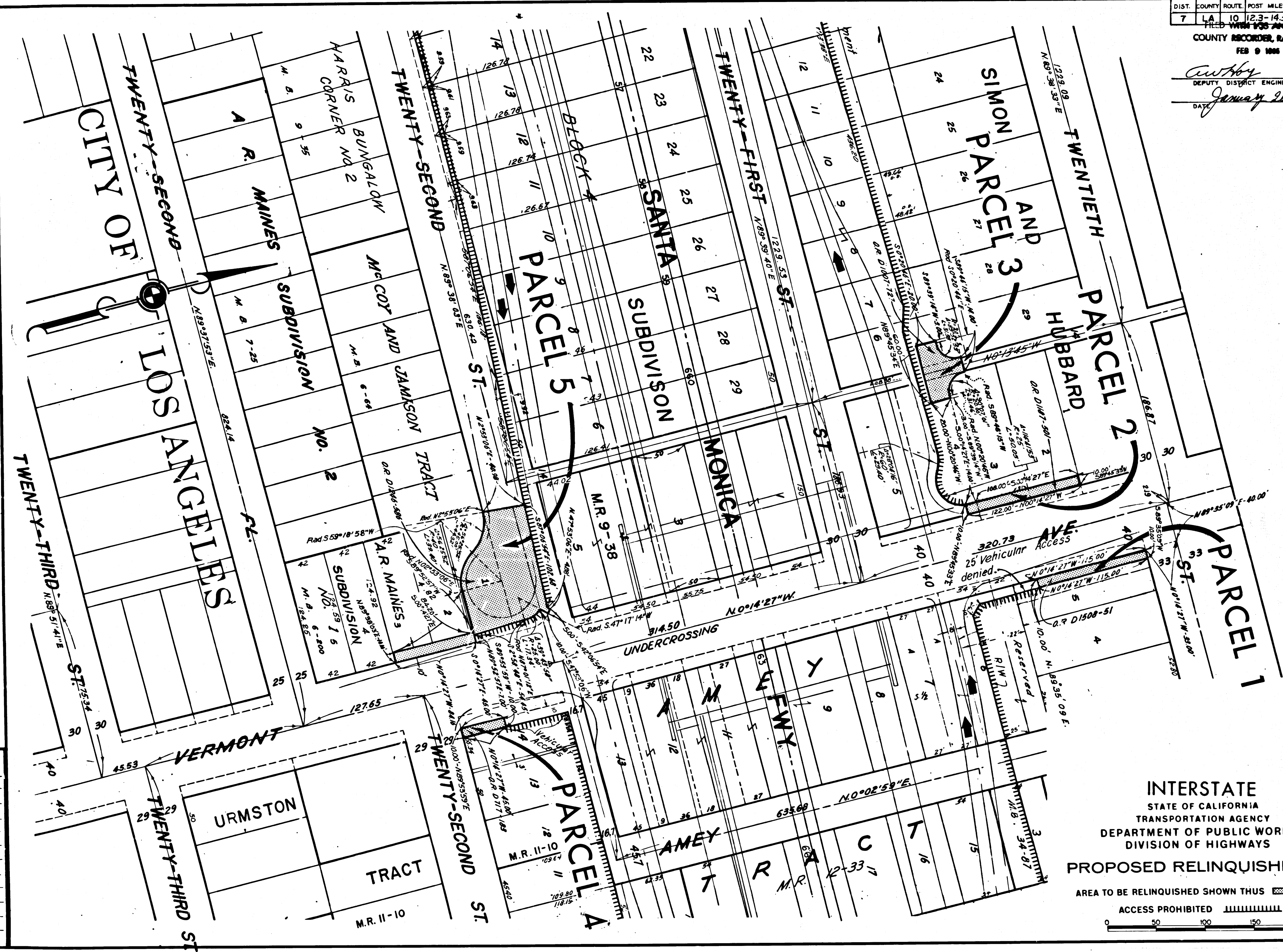
REL-467  
 DRN BY *RSD*  
 C/LC BY *RSD*  
 CKD BY *mm*  
 BASE MAP NO'S  
 REF. MAP NO'S  
 AS BUILT NO'S

DIST.	COUNTY	ROUTE	POST MILES	SHEET NO.	TOTAL SHEETS
7	LA	10	12.3-14.3	2	8

FILED WITH LOS ANGELES COUNTY RECORDER, RAY E. LEE FEB 9 1966

*Anthony*  
DEPUTY DISTRICT ENGINEER

DATE *January 26, 1966*



INTERSTATE  
STATE OF CALIFORNIA  
TRANSPORTATION AGENCY  
DEPARTMENT OF PUBLIC WORKS  
DIVISION OF HIGHWAYS

PROPOSED RELINQUISHMENT

AREA TO BE RELINQUISHED SHOWN THUS

ACCESS PROHIBITED



REL- 467

DRN BY *J.K.*  
C/LC BY *R.S.D.*  
CHKD BY *M.A.*  
BASE MAP NO'S  
*F-2077*

REF. MAP NO'S  
*CGM 220.4*

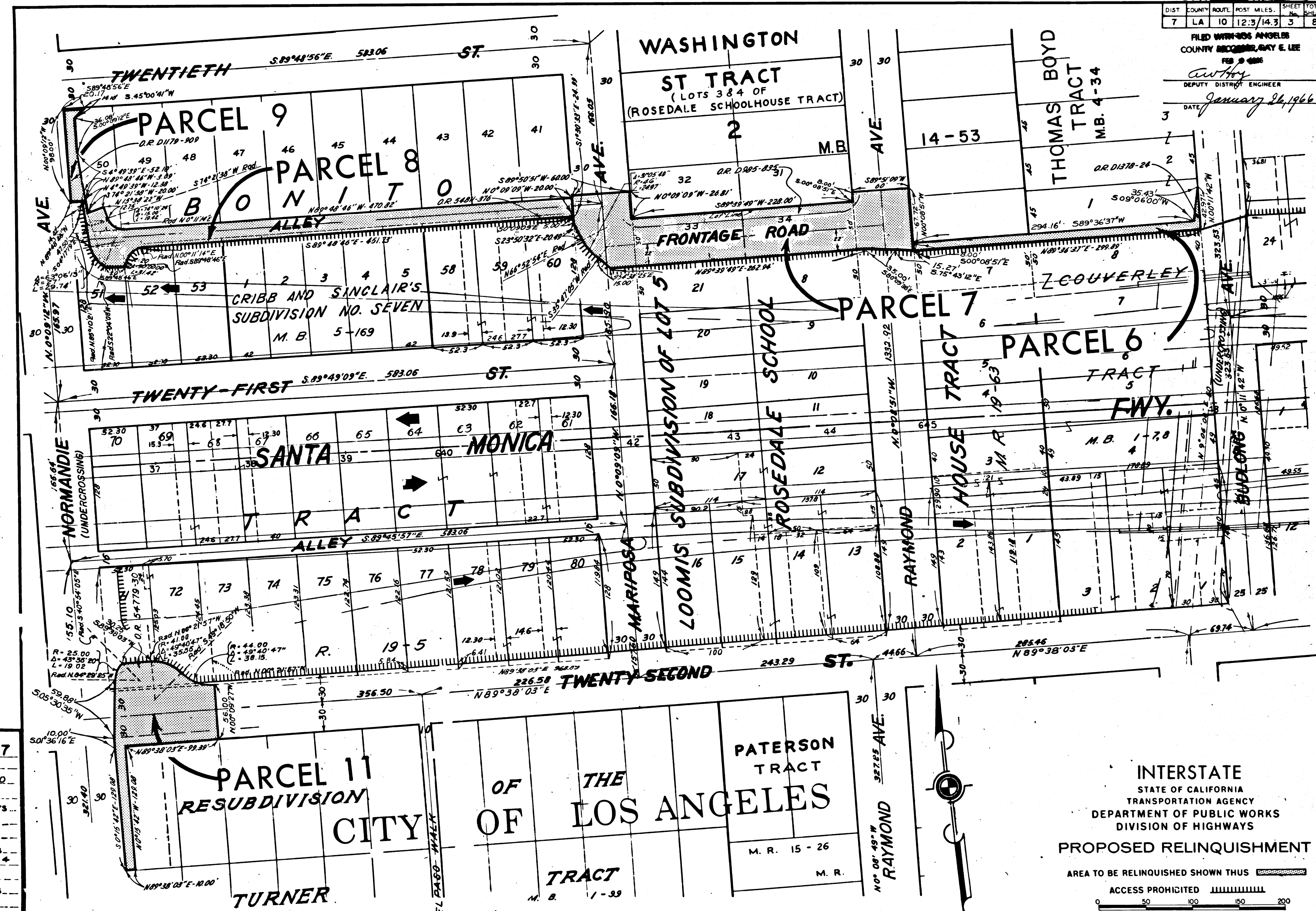
AS BUILT NO'S  
*148-6*

DIST.	COUNTY	ROUTE	POST MILES.	SHEET No.	TOTAL SHEETS
7	LA	10	12.3/14.3	3	8

FILED WITH LOS ANGELES COUNTY RECORDER, RAY E. LEE

FEB 9 1966  
DEPUTY DISTRICT ENGINEER

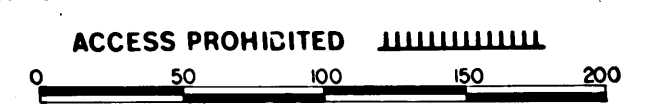
DATE *January 26, 1966*



REL-467  
DRN BY R.G.  
C.L.C. BY R.S.D.  
CND BY  
BASE MAP NOS  
F-2077  
REF. MAP NOS  
C.C.M 220.4  
AS BUILT NOS  
142.4

INTERSTATE  
STATE OF CALIFORNIA  
TRANSPORTATION AGENCY  
DEPARTMENT OF PUBLIC WORKS  
DIVISION OF HIGHWAYS  
PROPOSED RELINQUISHMENT

AREA TO BE RELINQUISHED SHOWN THUS

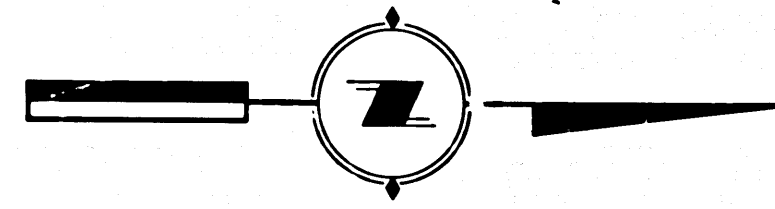
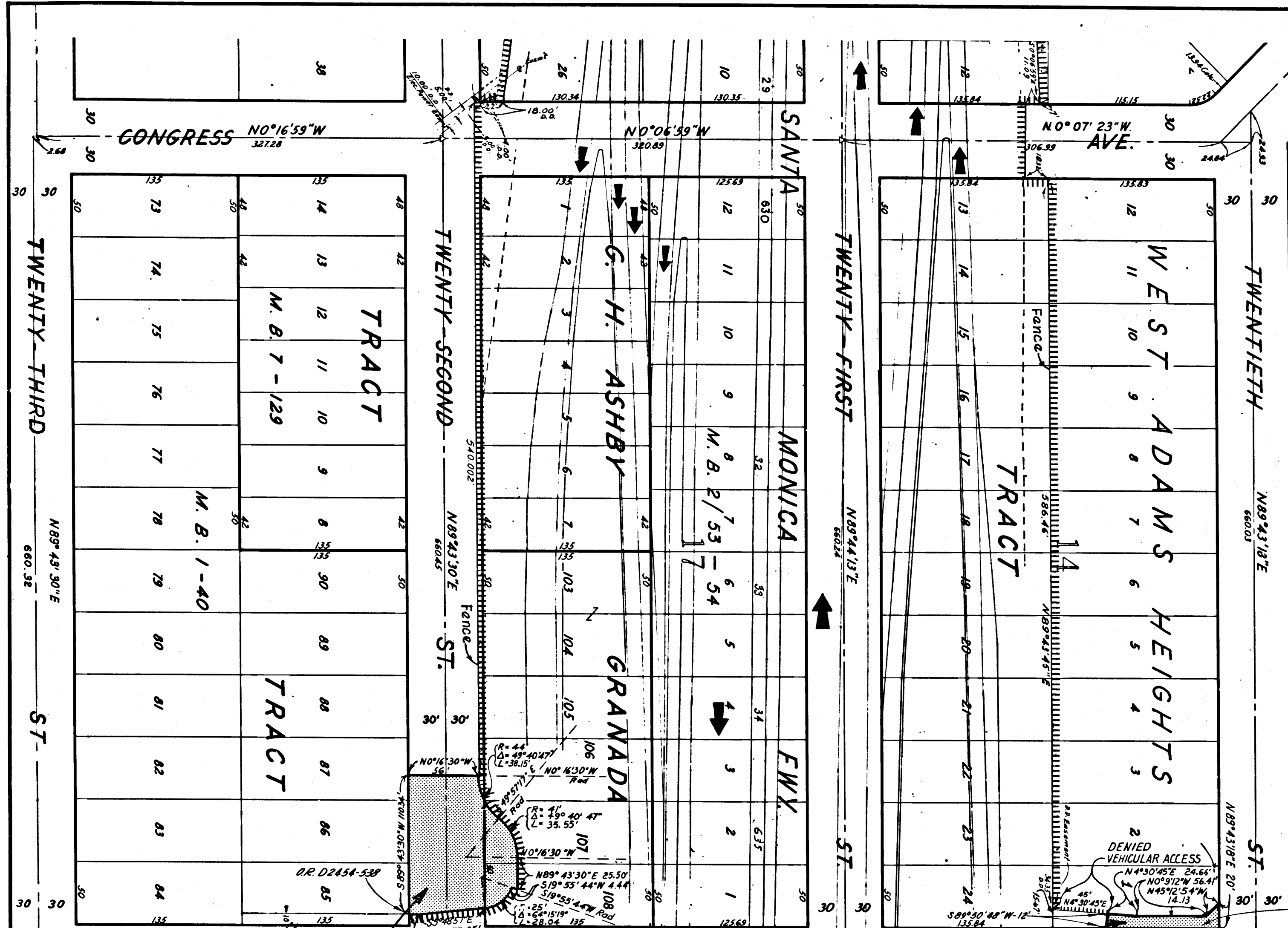


DIST.	COUNTY	ROUTE	POST MILES.	SHEET No.	TOTAL SHEETS
7	LA	10	12.3/14.3	4	8


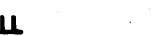
FILED WITH LOS ANGELES  
 COUNTY RECORDER, RAY E. LEE  
 FEB 9 1966

*W. H. H. H.*  
 DEPUTY DISTRICT ENGINEER

DATE *January 26, 1966*



INTERSTATE  
 STATE OF CALIFORNIA  
 TRANSPORTATION AGENCY  
 DEPARTMENT OF PUBLIC WORKS  
 DIVISION OF HIGHWAYS  
 PROPOSED RELINQUISHMENT

AREA TO BE RELINQUISHED SHOWN THUS   
 ACCESS PROHIBITED 



PARCEL 12

PARCEL 10

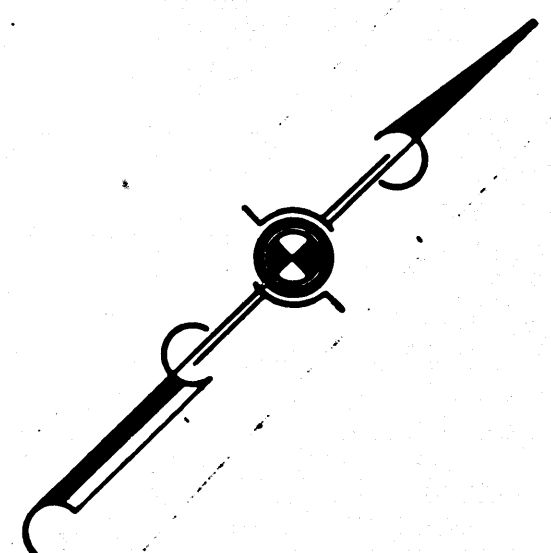
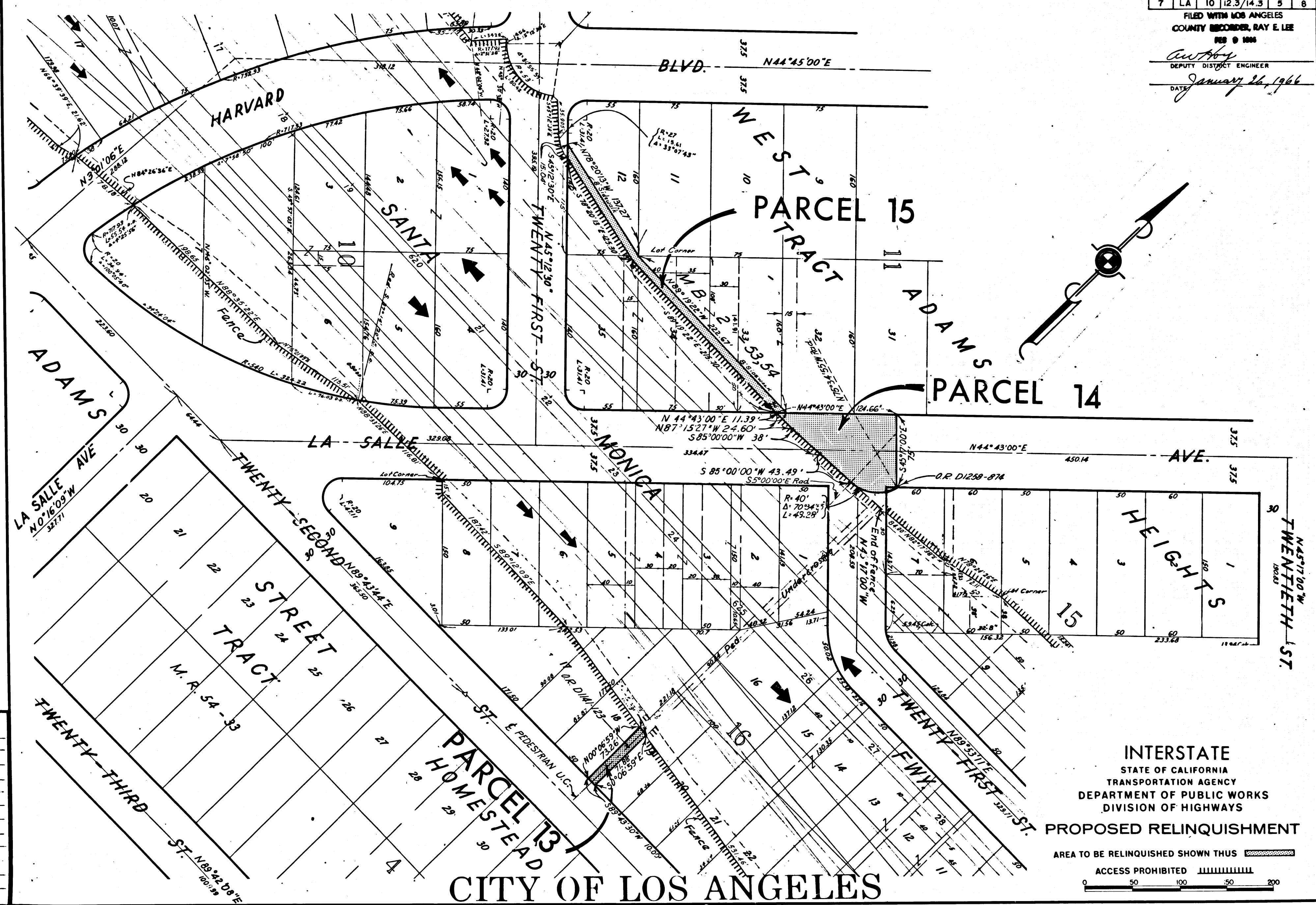
CITY OF LOS ANGELES

REL-467  
 DWN BY B. J. K.  
 C.L.C. BY R.S.D.  
 CKD BY D. L.  
 BASE MAP NOS.  
 F-2076  
 REF. MAP NOS.  
 C.C.M. 220.4  
 AS BUILT NOS.  
 148-4

DIST.	COUNTY	ROUTE	POST. MILE.	SHEET No.	TOTAL SHEETS
7	LA	10	12.3/14.3	5	8

FILED WITH LOS ANGELES  
COUNTY RECORDER, RAY E. LEE  
FEB 9 1966

*Anthony*  
DEPUTY DISTRICT ENGINEER  
DATE *January 26, 1966*



INTERSTATE  
STATE OF CALIFORNIA  
TRANSPORTATION AGENCY  
DEPARTMENT OF PUBLIC WORKS  
DIVISION OF HIGHWAYS  
PROPOSED RELINQUISHMENT

AREA TO BE RELINQUISHED SHOWN THUS

ACCESS PROHIBITED

0 50 100 150 200

REL-467  
DWN BY J.K.  
CLC BY B.S.D.  
CK'D BY *h*  
BASE MAP NO'S  
F 2078  
REF. MAP NO'S  
C.C.M. 220.4  
AS BUILT NO'S  
148-4

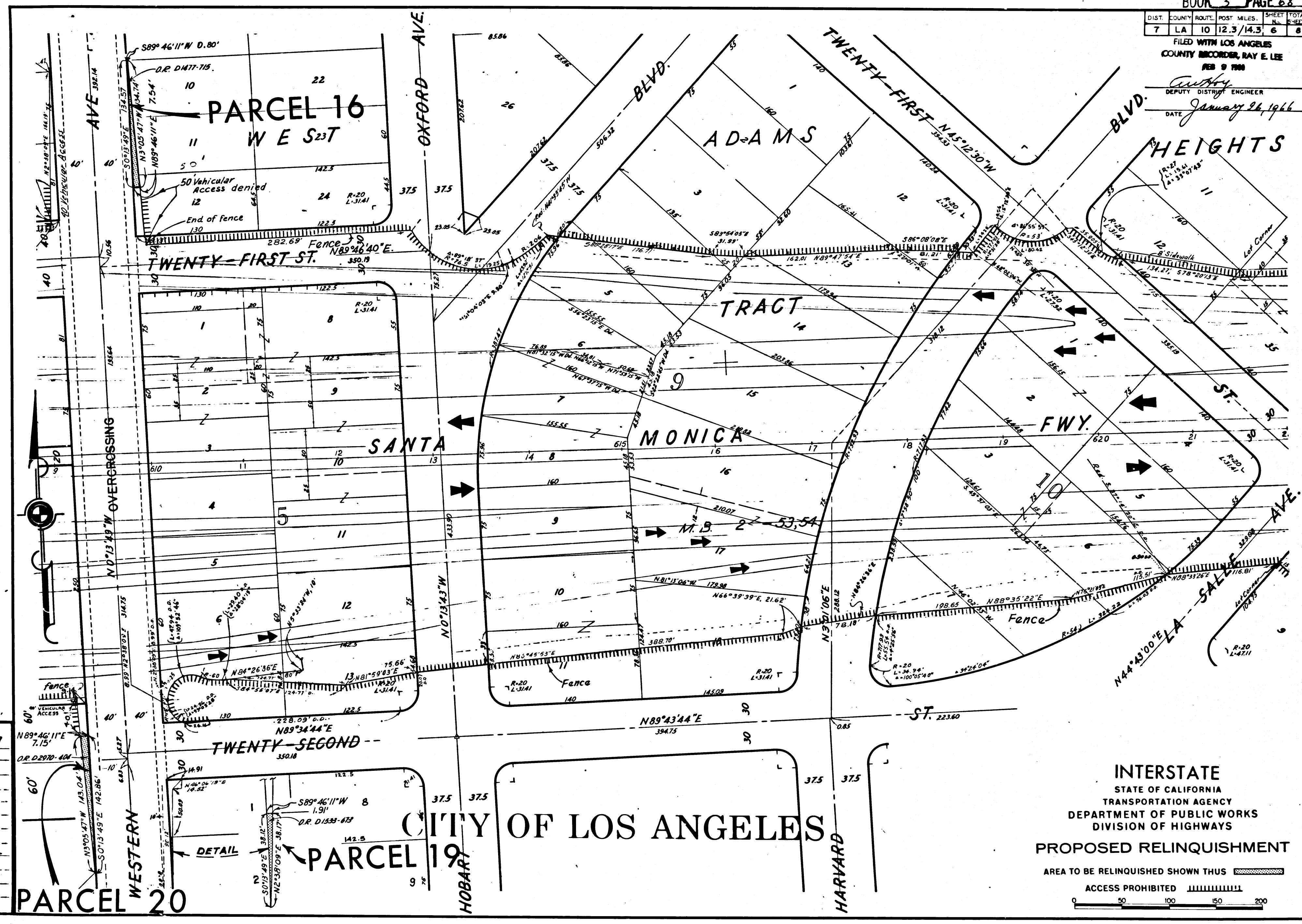
CITY OF LOS ANGELES

DIST.	COUNTY	ROUTE	POST MILES	SHEET NO.	TOTAL SHEETS
7	LA	10	12.3/14.3	6	8

FILED WITH LOS ANGELES COUNTY RECORDER, RAY E. LEE FEB 9 1966

Authy DEPUTY DISTRICT ENGINEER

DATE January 26, 1966



REL-467  
 DRN BY J.K.  
 C.L.C. BY R.S.D.  
 CKD BY J.A.  
 BASE MAP N.S.  
 F 2076  
 REF. MAP NOS.  
 C.C.M. 220.4  
 AS BUILT NOS.  
 148-4

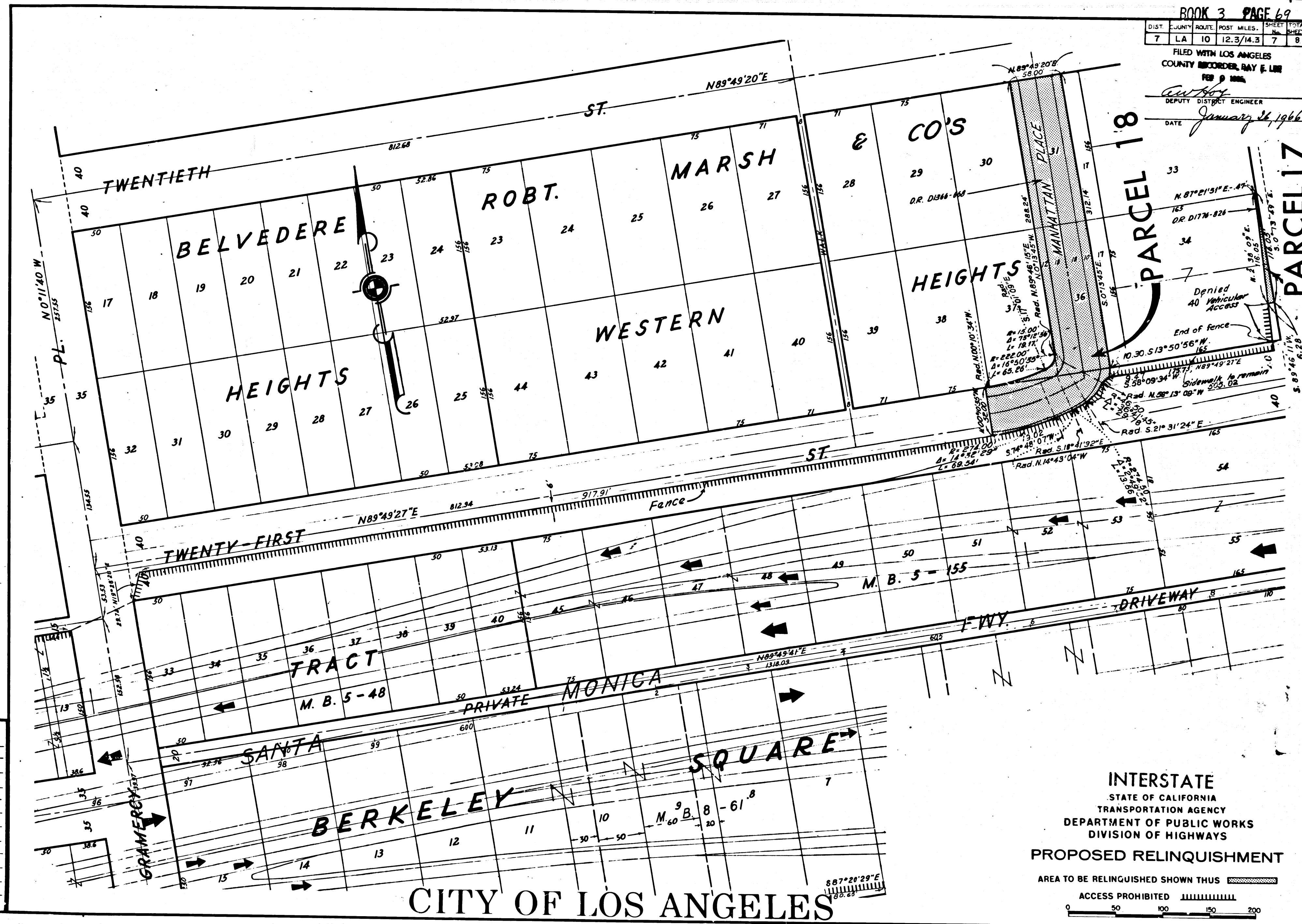
INTERSTATE  
 STATE OF CALIFORNIA  
 TRANSPORTATION AGENCY  
 DEPARTMENT OF PUBLIC WORKS  
 DIVISION OF HIGHWAYS  
 PROPOSED RELINQUISHMENT  
 AREA TO BE RELINQUISHED SHOWN THUS   
 ACCESS PROHIBITED

CITY OF LOS ANGELES

DIST.	COUNTY	ROUTE	POST MILES	SHEET No.	TOTAL SHEETS
7	LA	10	12.3/14.3	7	8

FILED WITH LOS ANGELES COUNTY RECORDER, RAY E. LEE  
FEB 9 1966

*Ray E. Lee*  
DEPUTY DISTRICT ENGINEER  
DATE *January 26, 1966*



REL-467  
DRN BY P.F.  
CLC BY R.S.D  
CKD BY M.M.  
BASE MAP NOS  
E-2078  
REF. MAP NOS  
C.C.M. 220.4  
AS BUILT NO'S  
148-4

INTERSTATE  
STATE OF CALIFORNIA  
TRANSPORTATION AGENCY  
DEPARTMENT OF PUBLIC WORKS  
DIVISION OF HIGHWAYS  
PROPOSED RELINQUISHMENT  
AREA TO BE RELINQUISHED SHOWN THUS [hatched box]  
ACCESS PROHIBITED [dashed line]  
0 50 100 150 200

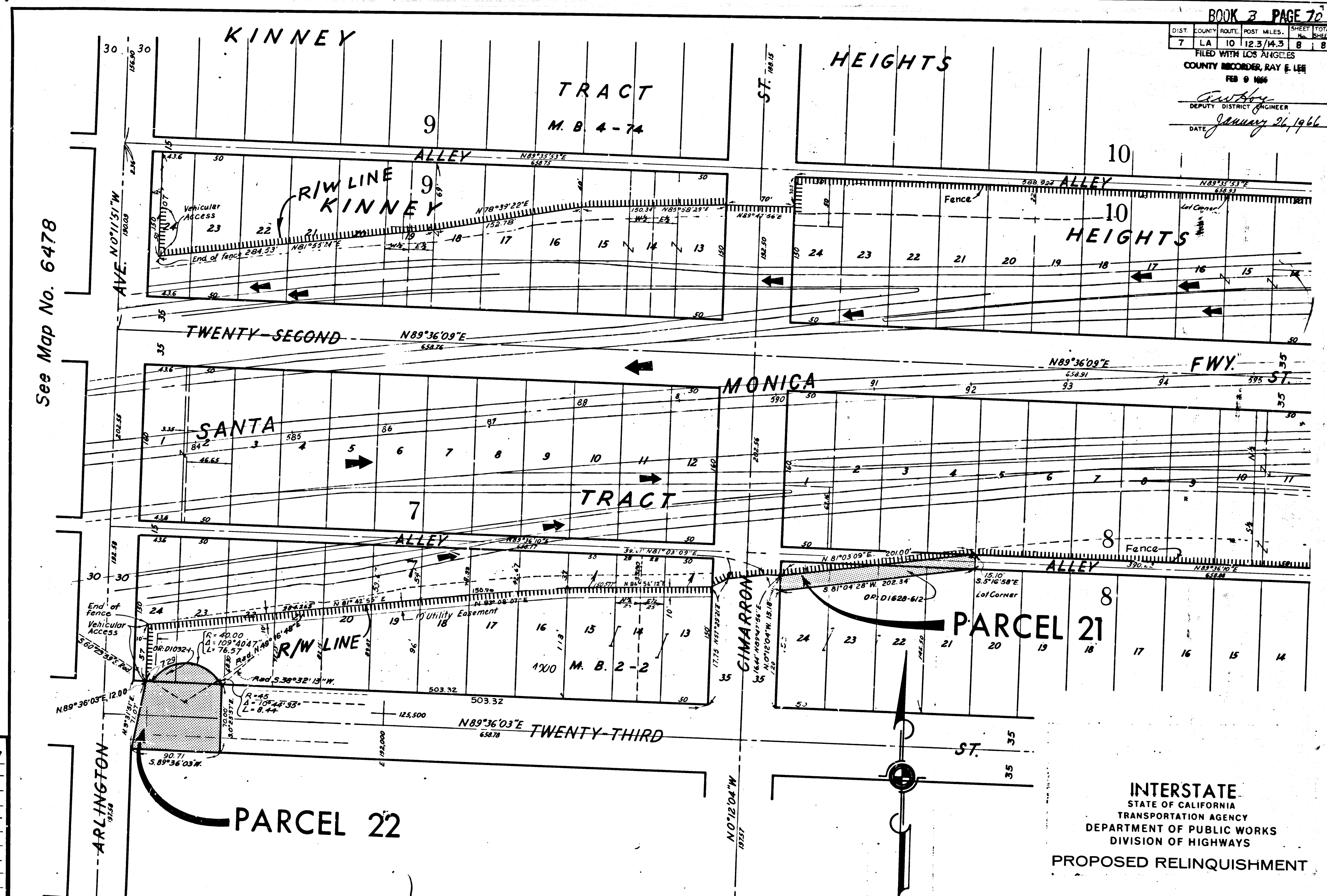
CITY OF LOS ANGELES

DIST.	COUNTY	ROUTE	POST MILES.	SHEET	TOTAL SHEETS
7	LA	10	12.3/14.3	8	8

FILED WITH LOS ANGELES  
 COUNTY RECORDER, RAY E. LEE  
 FEB 9 1966

*Carroll*  
 DEPUTY DISTRICT ENGINEER  
 DATE January 26, 1966

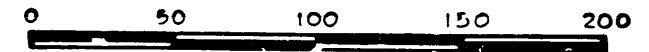
See Map No. 6478



REL-467  
 DWN BY P.F.  
 CLK BY R.S.D.  
 CKD BY M.M.  
 BASE MAP NOS  
 F-2076  
 REF. MAP NOS  
 C.C.M 220.4  
 AS BUILT NOS  
 148-4

INTERSTATE  
 STATE OF CALIFORNIA  
 TRANSPORTATION AGENCY  
 DEPARTMENT OF PUBLIC WORKS  
 DIVISION OF HIGHWAYS  
 PROPOSED RELINQUISHMENT

AREA TO BE RELINQUISHED SHOWN THUS [hatched pattern]  
 ACCESS PROHIBITED [dashed line pattern]



CITY OF LOS ANGELES