

3-71-78

BOOK 3		PAGE 71			
DIST	COUNTY	ROUTE	POST MILES	SHEET NO.	TOTAL SHEETS
7	L.A.	405	37.1-38.9	1	5

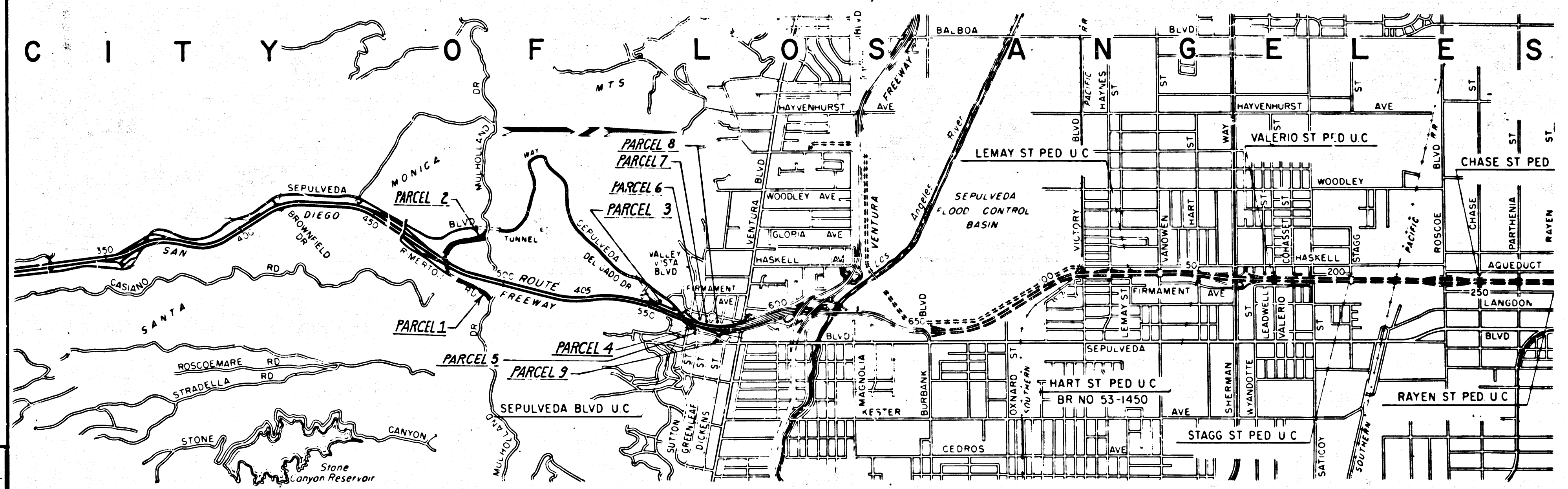
STATE OF CALIFORNIA
 TRANSPORTATION AGENCY
 DEPARTMENT OF PUBLIC WORKS
 DIVISION OF HIGHWAYS

RIGHT OF WAY MAPS OF STATE HIGHWAY

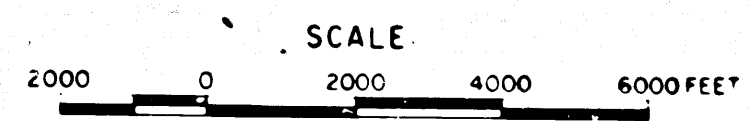
Anthony
 DEPUTY DISTRICT ENGINEER
 DATE *February 14, 1966*

2917
 RECORDED
 AT REQUEST OF
 DEPT. OF PUBLIC WORKS
 FEB. 18, 1966
 25 9 AM.
 3
 71
 OF BUREAU RECORD MAPS
 LOS ANGELES COUNTY, CALIF.
 RAY E. LEE
 COUNTY RECORDER
Ray E. Lee
 Deputy

In Los Angeles County, in Los Angeles between 0.3 mile south of Casiano Road and 0.5 mile north of Nordhoff Street



REL-462
 DRN BY B.J.K.
 C/LC BY J.H.
 CR'D BY
 BASE MAP NOS
 E-1935
 REF. MAP NOS
 AS BUILT NOS



INTERSTATE
 STATE OF CALIFORNIA
 TRANSPORTATION AGENCY
 DEPARTMENT OF PUBLIC WORKS
 DIVISION OF HIGHWAYS
 PROPOSED RELINQUISHMENT

DIST.	COUNTY	ROUTE	POST MILES	SHEET NO.	TOTAL SHEETS
7	LA	405	37.1 - 38.9	3	5

FILED WITH LOS ANGELES

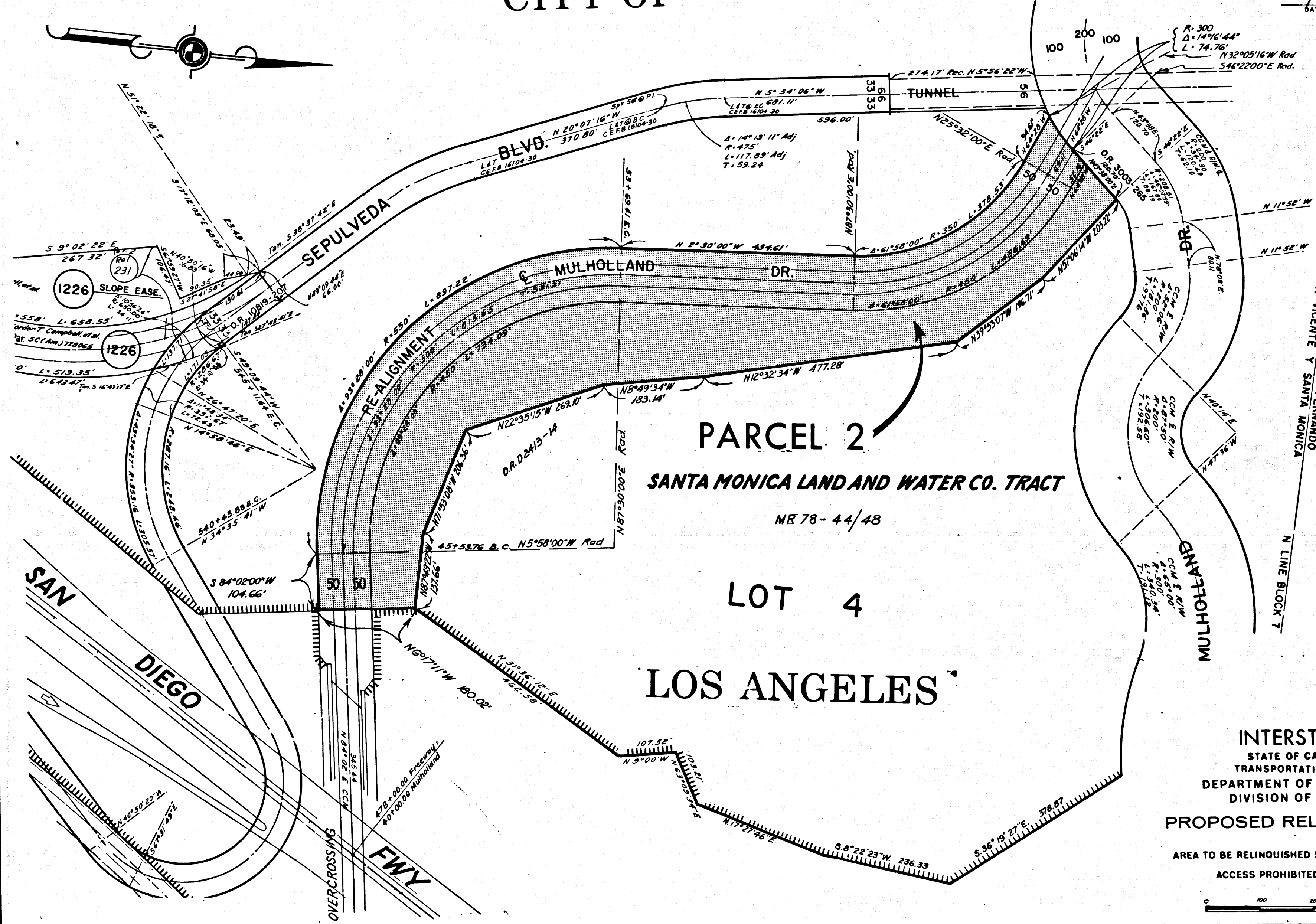
COUNTY RECORDER, RAY E. LEE

FEB 18 1966

Anthony
DEPUTY DISTRICT ENGINEER

February 14, 1966
DATE

CITY OF

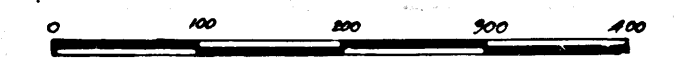


REVISED 1-10-66
REL-462
DRN BY BJK
C/LC BY
CK'D BY
BASE MAP NO'S
F-1935
REF. MAP NO'S
AS BUILT NO'S

PARCEL 2
SANTA MONICA LAND AND WATER CO. TRACT
MR 78 - 44/48
LOT 4
LOS ANGELES

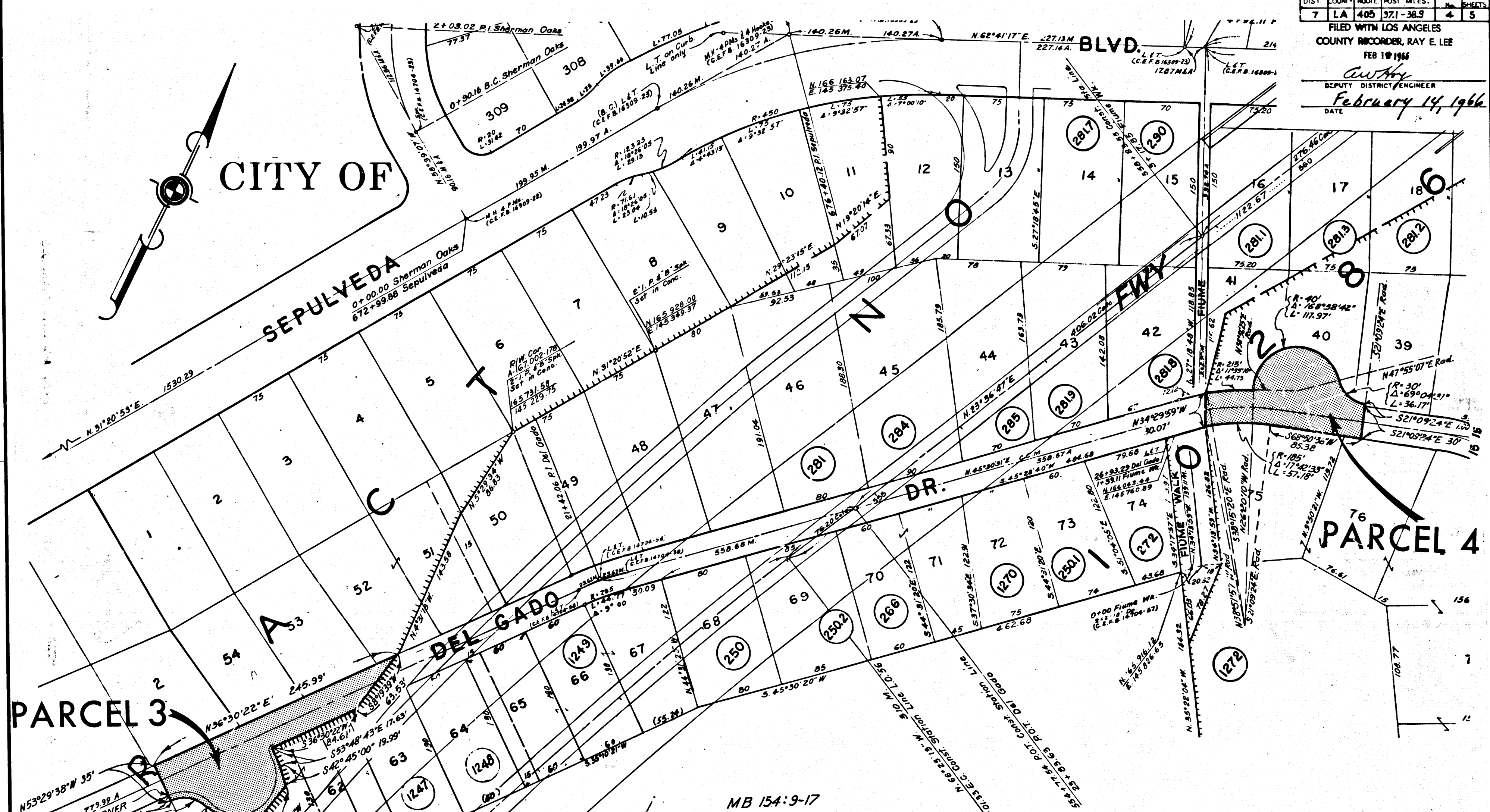
INTERSTATE
STATE OF CALIFORNIA
TRANSPORTATION AGENCY
DEPARTMENT OF PUBLIC WORKS
DIVISION OF HIGHWAYS
PROPOSED RELINQUISHMENT

AREA TO BE RELINQUISHED SHOWN THUS [Hatched Pattern]
ACCESS PROHIBITED [Dashed Line Pattern]



DIST	COUNTY	ROUTE	POST MILES	SHEET No.	TOTAL SHEETS
7	LA	405	37.1-38.9	4	5

FILED WITH LOS ANGELES
COUNTY RECORDER, RAY E. LEE
FEB 18 1966
W. H. ...
DEPUTY DISTRICT ENGINEER
February 14, 1966
DATE



CITY OF

SEPULVEDA

BLVD.

FWY

DR.

DEL GADO

PARCEL 4

PARCEL 3

LOS ANGELES

MB 154-9-17

REL-462
DWN BY BJK
CLC BY
CRD BY
BASE MAP NO'S
F-1936
REF. MAP NO'S
AS BUILT NO'S

INTERSTATE
STATE OF CALIFORNIA
TRANSPORTATION AGENCY
DEPARTMENT OF PUBLIC WORKS
DIVISION OF HIGHWAYS
PROPOSED RELINQUISHMENT

AREA TO BE RELINQUISHED SHOWN THUS 
ACCESS PROHIBITED 



CITY OF

LOS ANGELES

TRACT NO. 10000

BOOK 3 PAGE 75

DIST.	COUNTY	ROUTE	POST MILES	SHEET NO.	TOTAL SHEETS
7	LA	405	37.1-38.9	5	5

FILED WITH LOS ANGELES COUNTY RECORDER, RAY E. LEE FEB 18 1966

DEPUTY DISTRICT ENGINEER February 14, 1966 DATE



REL-462
 DWN BY B.J.K.
 C.L.C. BY
 CK'D BY
 BASE MAP NOS. F-1937
 REF. MAP NOS.
 AS BUILT NOS.

STATE OF CALIFORNIA
 TRANSPORTATION AGENCY
 DEPARTMENT OF PUBLIC WORKS
 DIVISION OF HIGHWAYS
 PROPOSED RELINQUISHMENT

AREA TO BE RELINQUISHED SHOWN THUS [Hatched Box]
 ACCESS PROHIBITED [Dashed Line]
 0 50 100 150 200