

4-76-87

DIST.	COUNTY	ROUTE	POST MILES	SHEET NO.	TOTAL SHEETS
7	LA	605	13.1	205	172

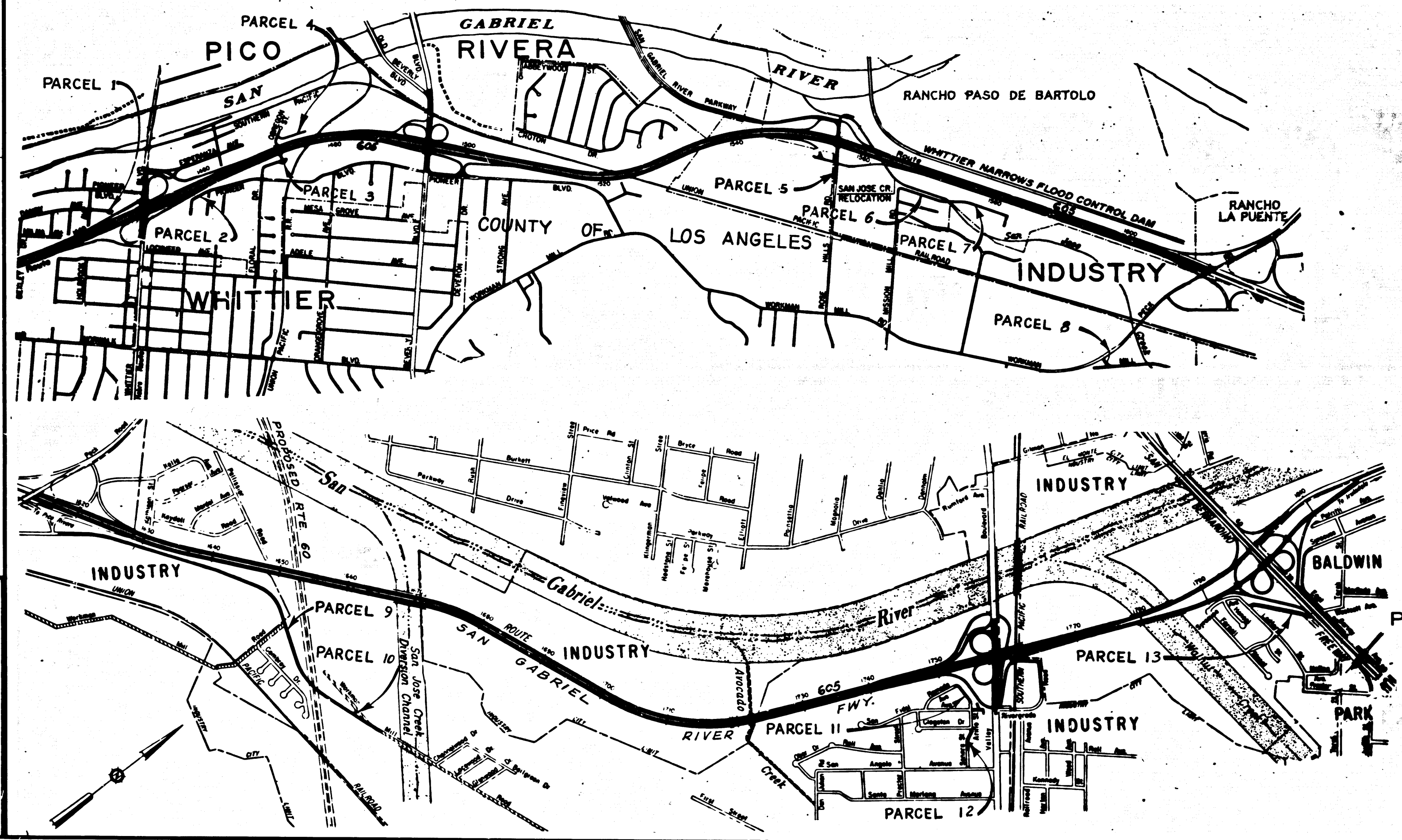
STATE OF CALIFORNIA
 TRANSPORTATION AGENCY
 DEPARTMENT OF PUBLIC WORKS
 DIVISION OF HIGHWAYS

C. W. Hoy
 DEPUTY DISTRICT ENGINEER
 February 10, 1966
 DATE

RIGHT OF WAY MAPS OF
STATE HIGHWAY

In Los Angeles County in and near Whittier and Baldwin Park
 between 0.4 mile south of Whittier Boulevard and San Bernardino Freeway

2018
 RECORDED
 AT REQUEST OF
 DEPT. OF PUBLIC WORKS
 FEB. 18, 1966
 25 11:00 AM.
 3
 76
 OF STATE HIGHWAY MAPS
 LOS ANGELES COUNTY, CALIF.
 RAY E. LEE
 COUNTY RECORDER
 FREE



REL-315
 DRN BY *J.D.*
 C/LC BY *J.N.*
 CKD BY *J.D.*
 BASE MAP NOS.
 F-1964, F-1965
 F-1966, F-1967
 F-1968, F-1969
 REF. MAP NOS.
 C.C.M. 209.1
 AS BUILT NOS.
 151-4

INTERSTATE
 PROPOSED RELINQUISHMENT

DIST.	COUNTY	ROUTE	POST. M. E.S.	SHEET No.	TOTAL SHEETS
7	LA	605	13.1-205	2	12

FILED WITH LOS ANGELES
 COUNTY RECORDER, RAY E. LEE
 FEB 18 1966

Anthony
 DEPUTY DISTRICT ENGINEER
 February 10, 1966
 DATE

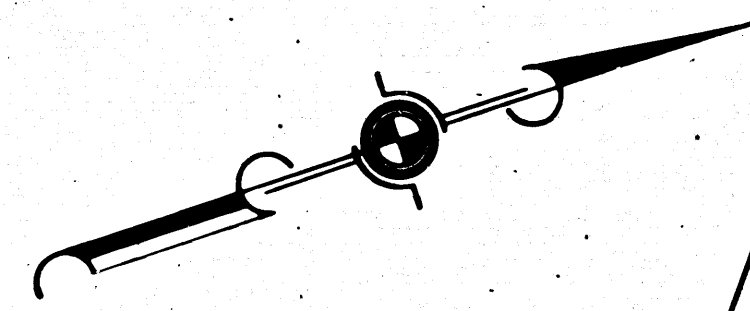
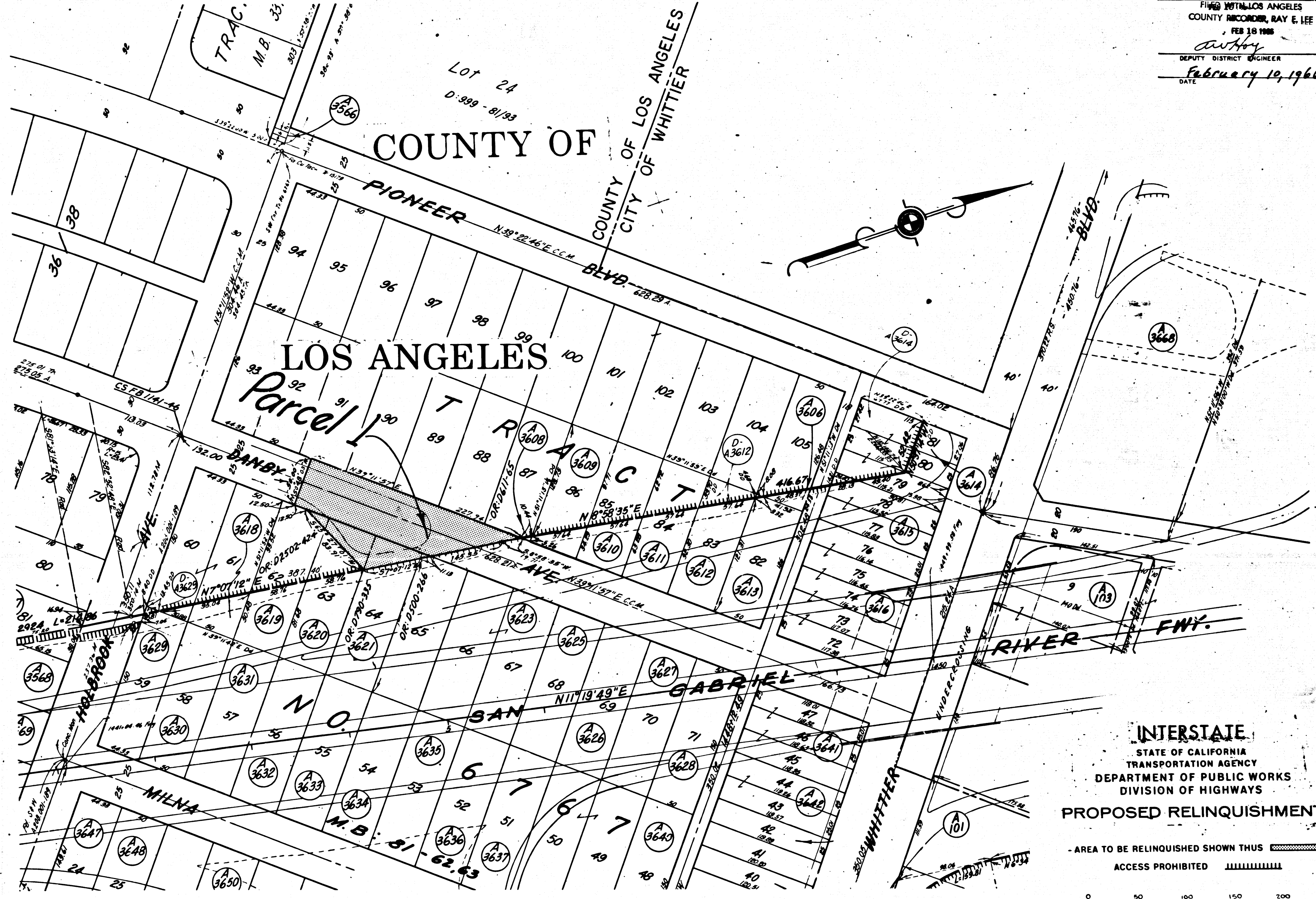
COUNTY OF

LOS ANGELES

Parcel 1⁹⁰

TRACT

SAN GABRIEL



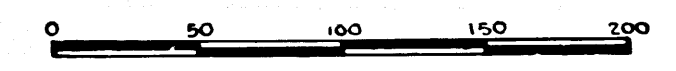
REL-315
 DRYN BY I. D.
 C.L.C. BY J. N.
 CK'D BY I. D.
 BASE MAP NOS
 F. 1964

REF. MAP NOS
 CCM 209.1

AS BUILT NOS
 151-4

INTERSTATE
 STATE OF CALIFORNIA
 TRANSPORTATION AGENCY
 DEPARTMENT OF PUBLIC WORKS
 DIVISION OF HIGHWAYS
PROPOSED RELINQUISHMENT

- AREA TO BE RELINQUISHED SHOWN THUS [shaded box]
 ACCESS PROHIBITED [hatched box]

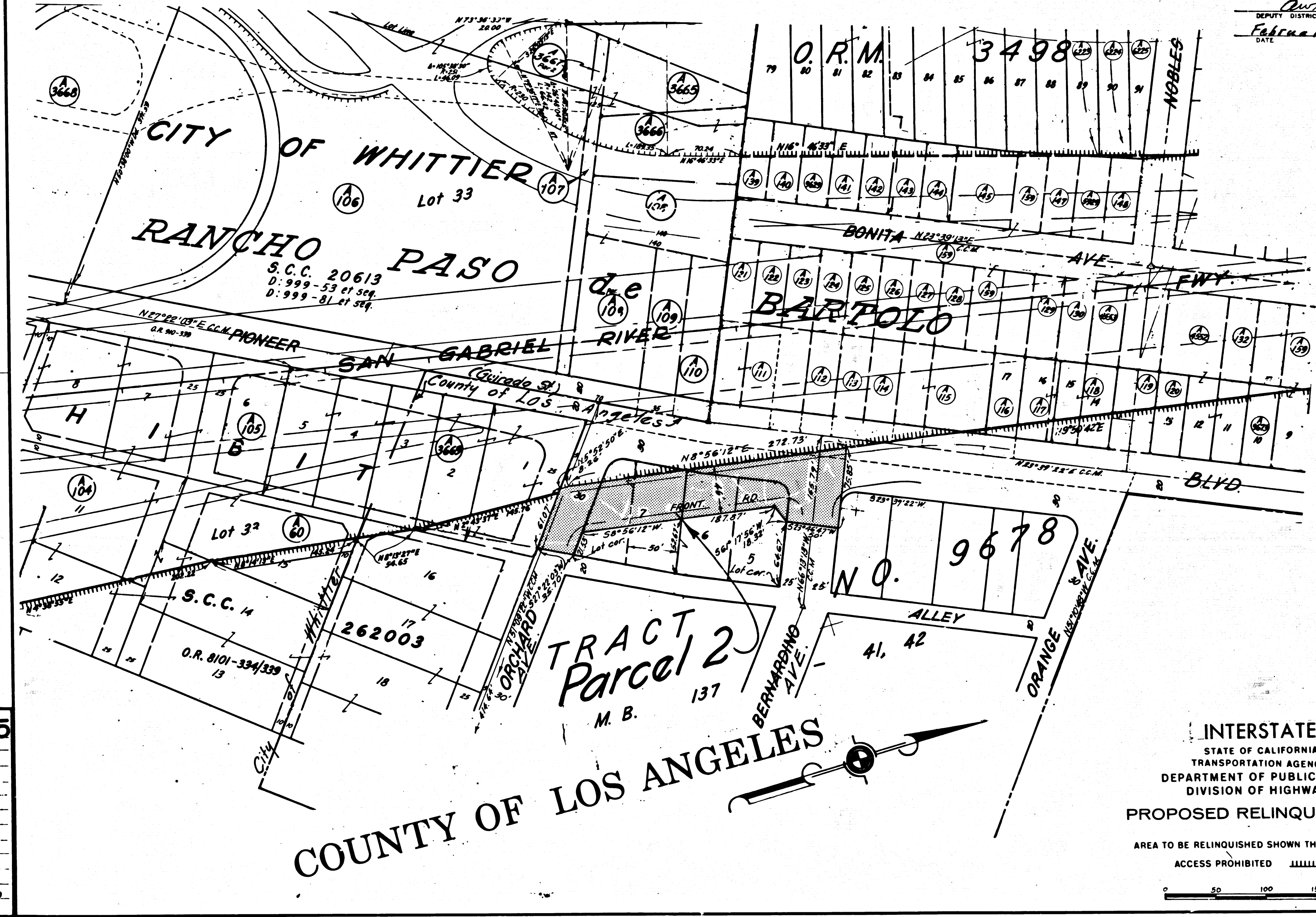


DIST.	COUNTY	ROUTE	POST MILES.	SHEET	TOTAL
7	LA	605	131/20.9	3	12

FIELD WITH LOS ANGELES
COUNTY RECORDER, RAY E. LEE
FEB 18 1966

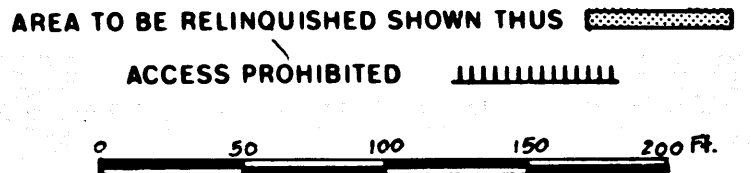
Anthony
DEPUTY DISTRICT ENGINEER

February 10, 1966
DATE



REL-315
 DRN BY I.D.
 C/LC BY J.N.
 CK'D BY J.D.
 BASE MAP NO'S
 E-1264
 REF. MAP NO'S
 C.C.M. 209.1
 AS BUILT NO'S
 151-4 Sht. 10

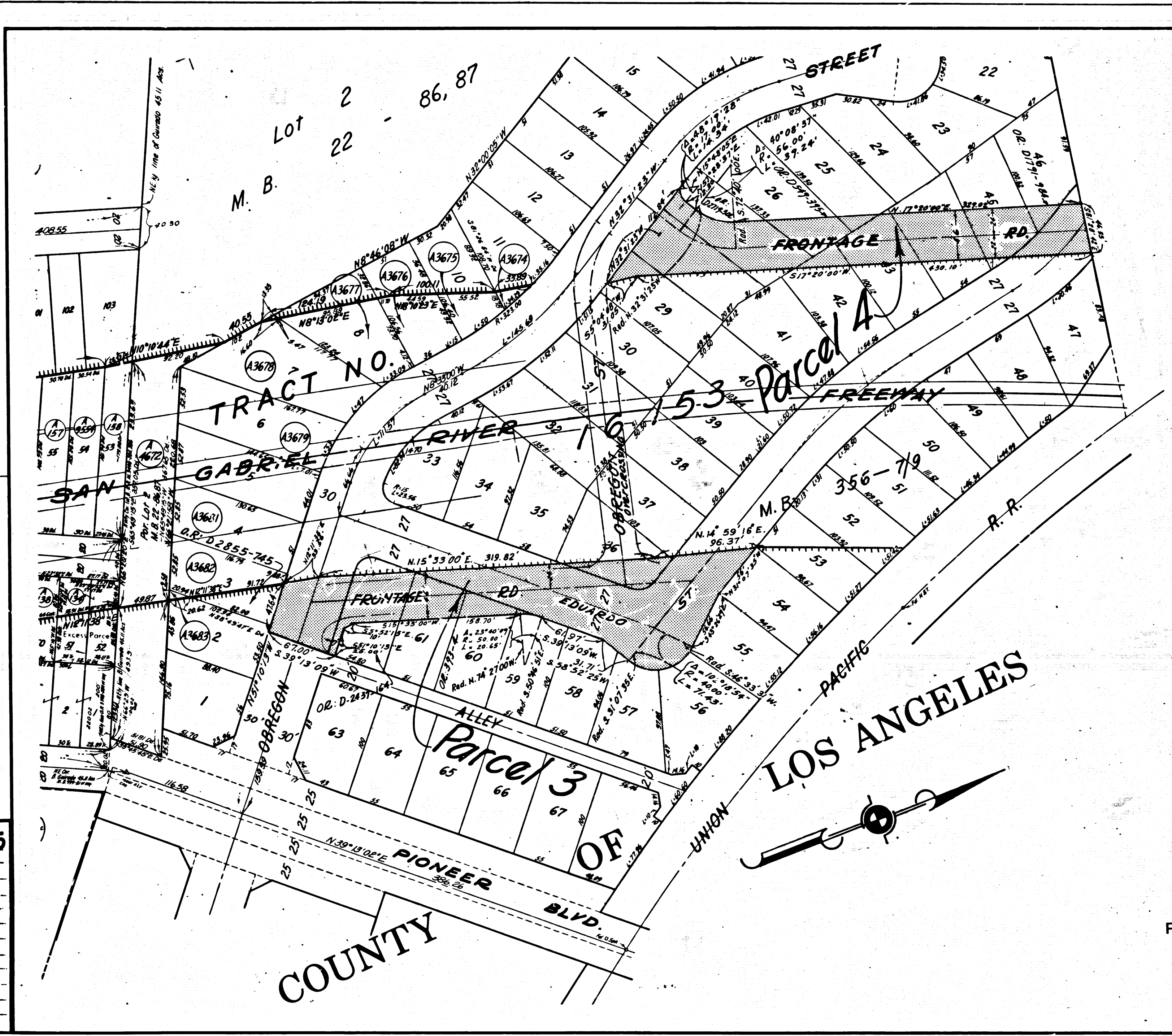
INTERSTATE
 STATE OF CALIFORNIA
 TRANSPORTATION AGENCY
 DEPARTMENT OF PUBLIC WORKS
 DIVISION OF HIGHWAYS
 PROPOSED RELINQUISHMENT



DIST.	COUNTY	ROUTE	POST MILES.	SHEET NO.	TOTAL SHEETS
7	LA	605/31-203	4	12	

FILED WITH LOS ANGELES
COUNTY RECORDER, RAY E. LEE
FEB 18 1966

Ray E. Lee
DEPUTY DISTRICT ENGINEER
February 10, 1966
DATE



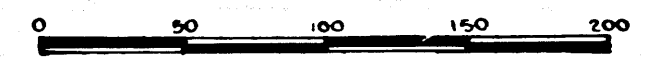
REL-315
DWN BY J.D.
CLC BY J.N.
CK'D BY J.D.
BASE MAP NO'S
E-1964

REF. MAP NO'S
C.C.M. 209.1

AS BUILT NO'S
151-4 SH. 12

INTERSTATE
STATE OF CALIFORNIA
TRANSPORTATION AGENCY
DEPARTMENT OF PUBLIC WORKS
DIVISION OF HIGHWAYS
PROPOSED RELINQUISHMENT

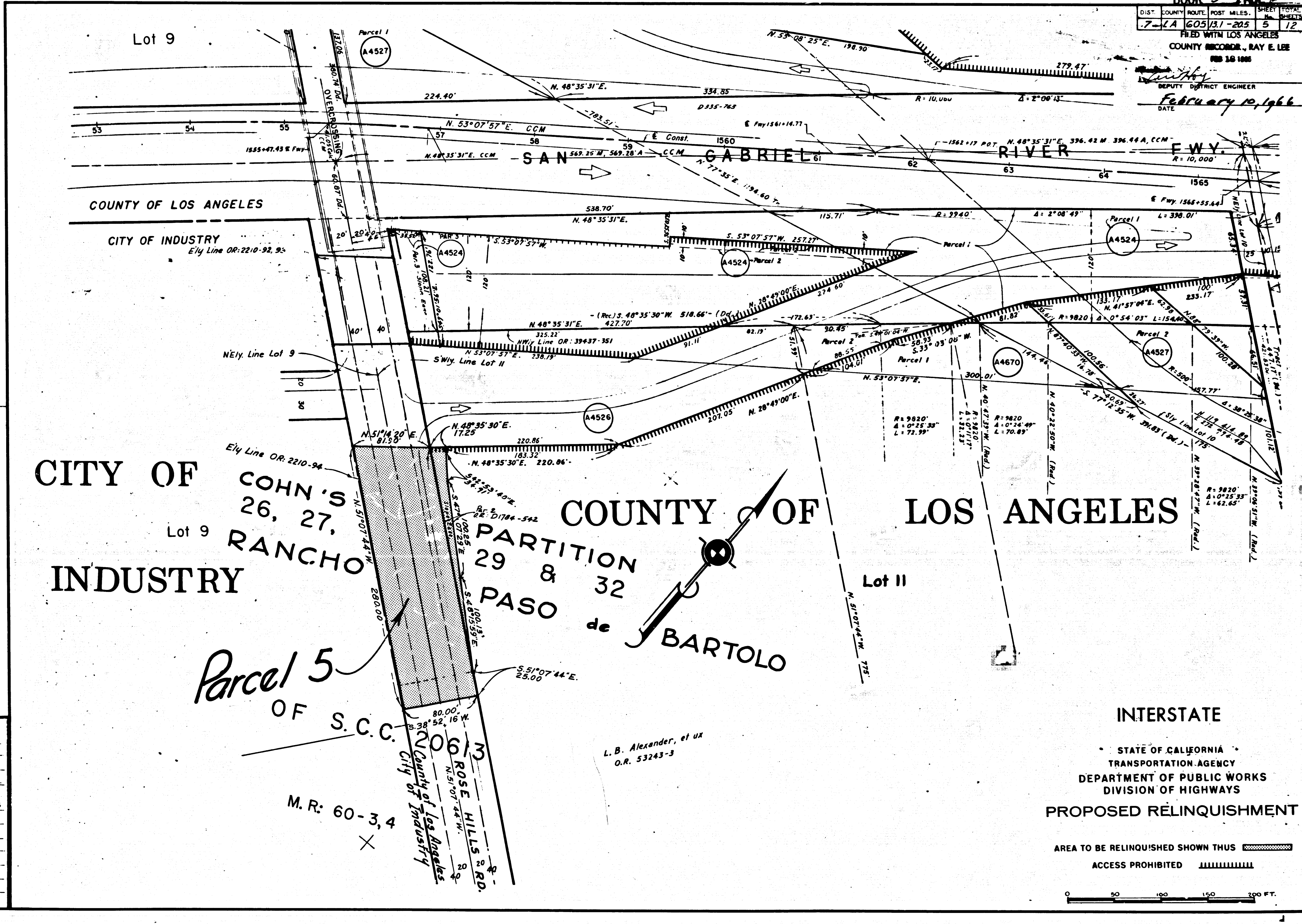
AREA TO BE RELINQUISHED SHOWN THUS 
ACCESS PROHIBITED 



DIST.	COUNTY	ROUTE	POST MILES	SHEET	TOTAL SHEETS
7	LA	605/131-205	5	12	

FILED WITH LOS ANGELES COUNTY RECORDS, RAY E. LEE
 FEB 18 1966

DEPUTY DISTRICT ENGINEER
 DATE February 10, 1966



CITY OF COHN'S 26, 27, 29 & 32 RANCHO PASO de BARTOLO
 COUNTY OF LOS ANGELES
 CITY OF INDUSTRY

Parcel 5 OF S.C.C. City of Industry

L.B. Alexander, et ux
 O.R. 53243-3

INTERSTATE
 STATE OF CALIFORNIA
 TRANSPORTATION AGENCY
 DEPARTMENT OF PUBLIC WORKS
 DIVISION OF HIGHWAYS
 PROPOSED RELINQUISHMENT

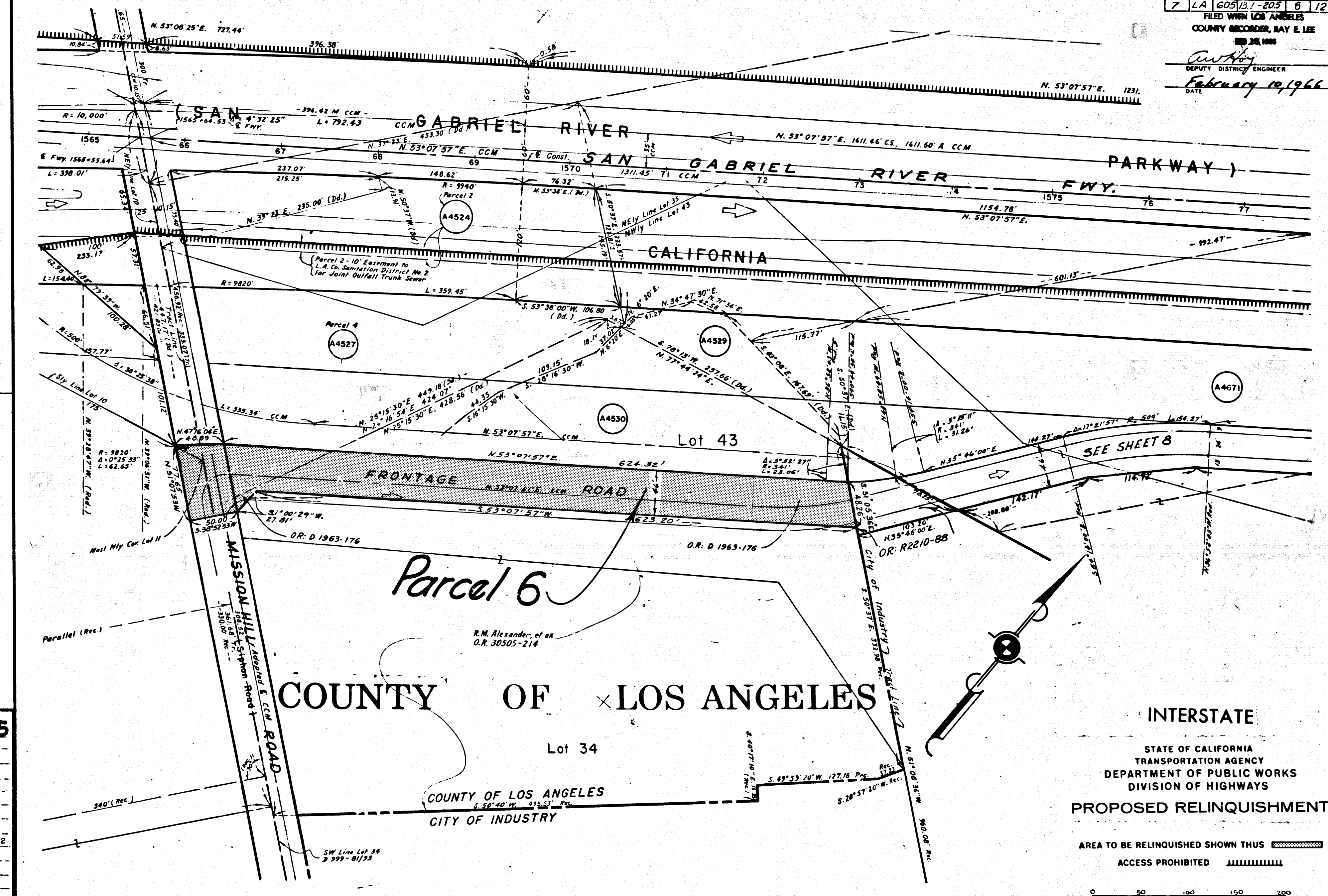
AREA TO BE RELINQUISHED SHOWN THUS [hatched box]
 ACCESS PROHIBITED [hatched line]
 0 50 100 150 200 FT.

REL-315
 DRN BY J.D.
 CLC BY J.N.
 CKD BY F.M.
 BASE MAP NO'S
 F-1965, F-1966
 REF. MAP NO'S
 C.C.M. 209.2
 AS BUILT NO'S
 151-4 Sht. 25

DIST.	COUNTY	ROUTE	POST MILES	SHEET NO.	TOTAL SHEETS
7	LA	605	13.1-205	6	12

FILED WITH LOS ANGELES COUNTY RECORDER, RAY E. LEE
 FEB 28 1966

Anthony
 DEPUTY DISTRICT ENGINEER
 DATE February 10, 1966

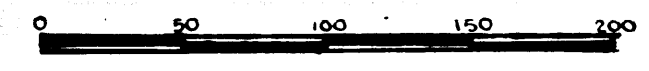


REL-315
 DRN BY R.C.
 C.L.C. BY J.N.
 CKD BY F.M.
 BASE MAP NO'S
 F-1966
 REF. MAP NO'S
 C.C.M. 209.2
 AS BUILT NO'S
 151-4

COUNTY OF LOS ANGELES

INTERSTATE
 STATE OF CALIFORNIA
 TRANSPORTATION AGENCY
 DEPARTMENT OF PUBLIC WORKS
 DIVISION OF HIGHWAYS
PROPOSED RELINQUISHMENT

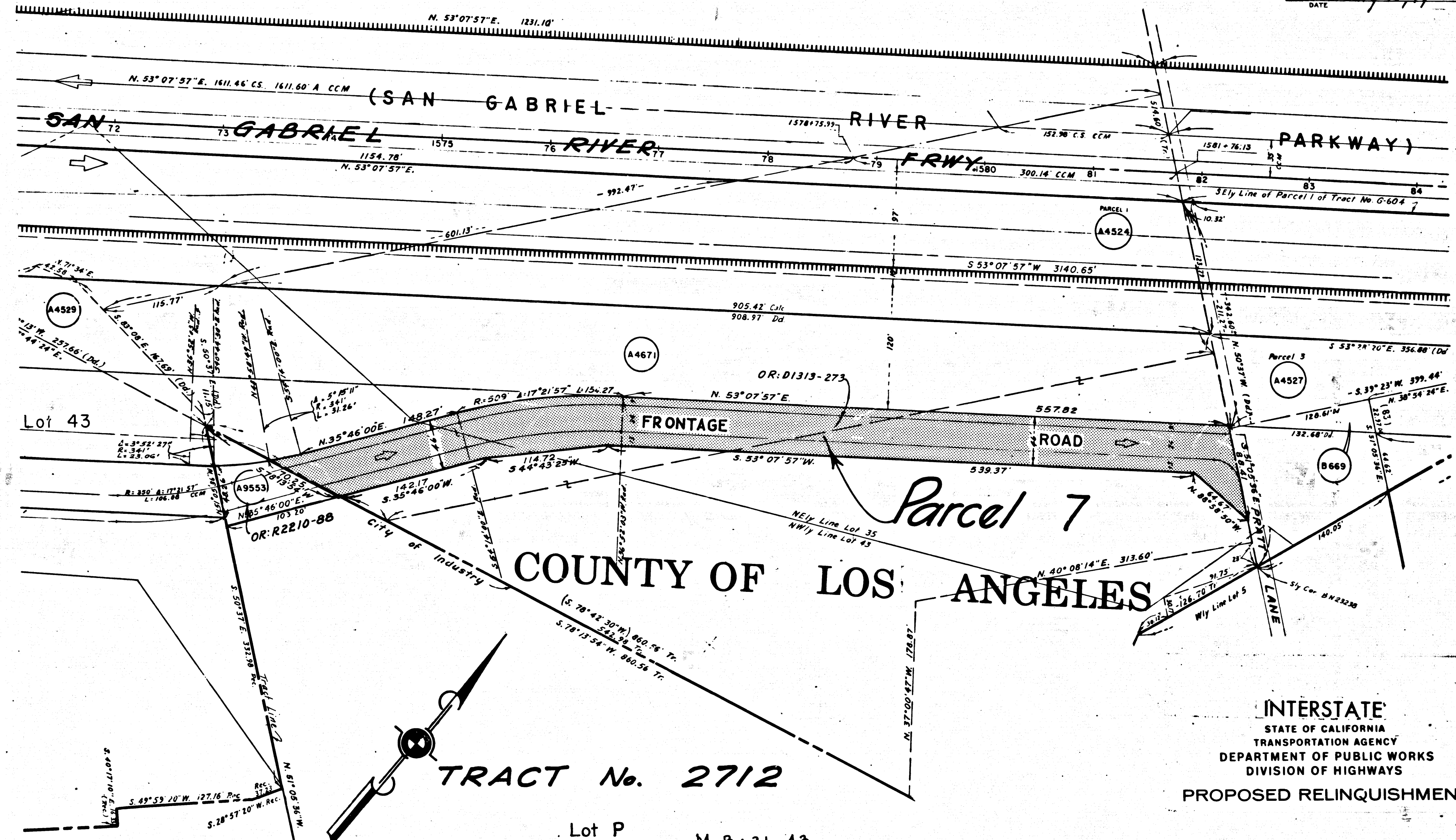
AREA TO BE RELINQUISHED SHOWN THUS [shaded box]
 ACCESS PROHIBITED [hatched box]



DIST.	COUNTY	ROUTE	POST MILES	SHEET	TOTAL SHEETS
7	LA	605	13.7-20.5	7	12

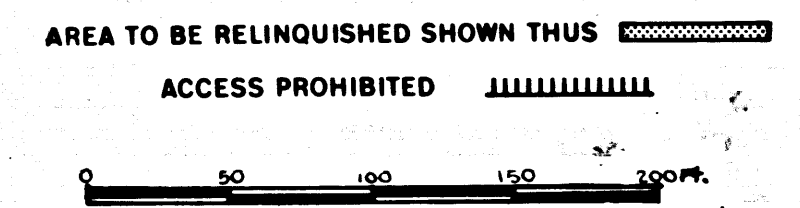
FILED WITH LOS ANGELES COUNTY RECORDER, RAY E. LEE
 DEPUTY DISTRICT ENGINEER

February 10, 1966
 DATE



REL-315
 DWN BY R.C.
 CLC BY J.N.
 CKD BY
 BASE MAP NO'S
 F-1967
 REF. MAP NO'S
 CCM 209.1
 AS BUILT NO'S
 151.4

INTERSTATE
 STATE OF CALIFORNIA
 TRANSPORTATION AGENCY
 DEPARTMENT OF PUBLIC WORKS
 DIVISION OF HIGHWAYS
 PROPOSED RELINQUISHMENT



TRACT No. 2712

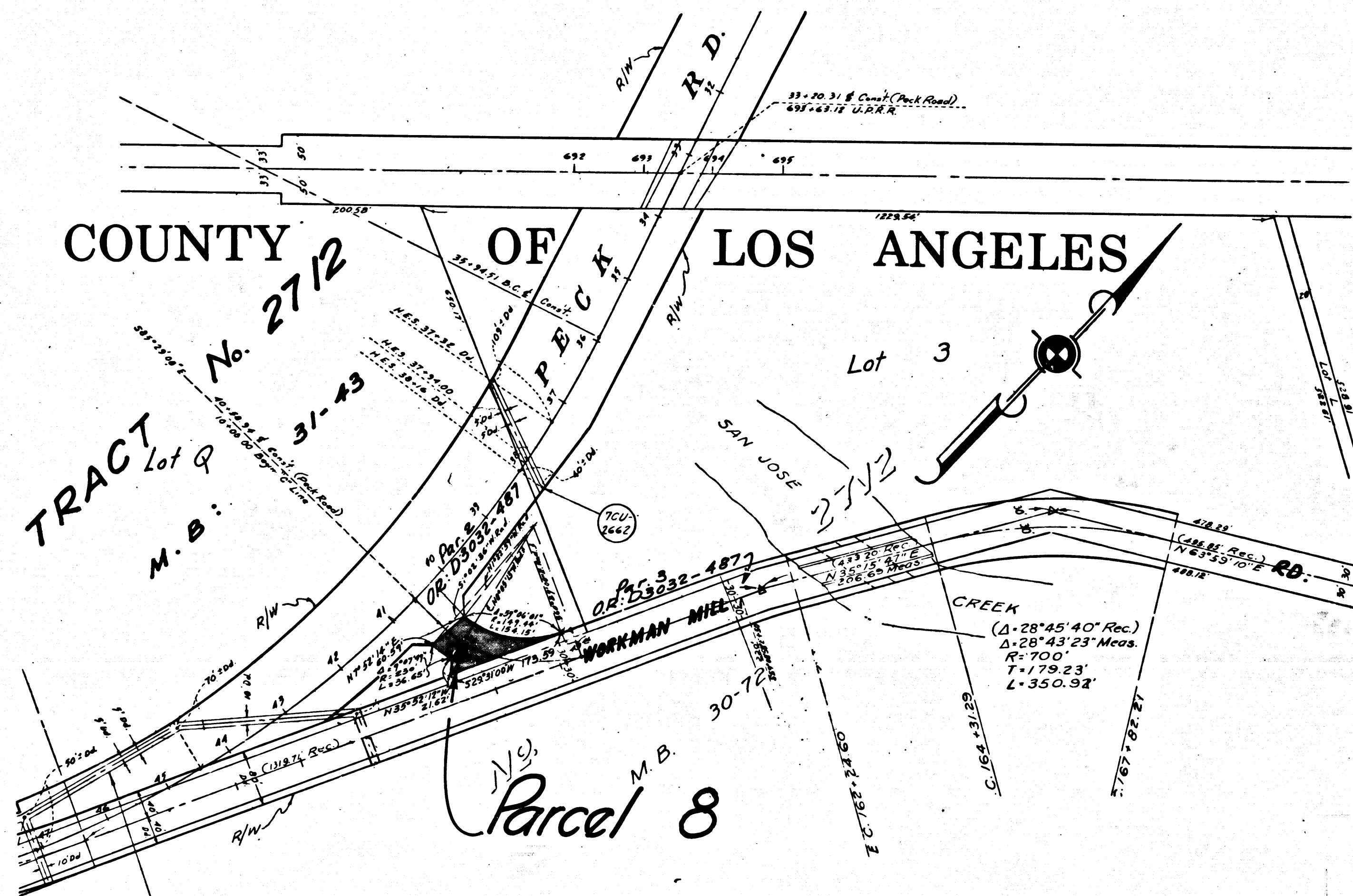
Lot P M.B: 31-43

DIST.	COUNTY	ROUTE	POST MILES	SHEET NO.	TOTAL SHEETS
7	L.A.	605	19.1/20.5	8	12

FILED WITH LOS ANGELES
 COUNTY RECORDER, RAY E. LEE
 FEB 19 1966

awbby
 DEPUTY DISTRICT ENGINEER

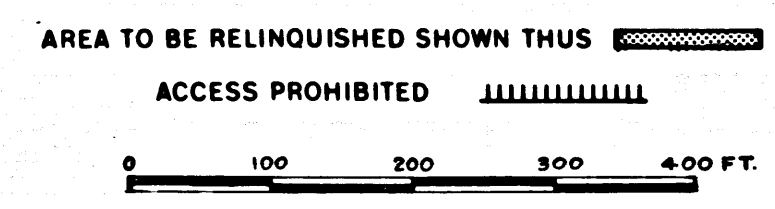
February 10, 1966
 DATE



COUNTY OF LOS ANGELES

REL-315
 DRYN BY J.D.
 C'LC BY J.N.
 CKD BY J.D.
 BASE MAP NO'S
 F-1966
 P-7219
 REF. MAP NO'S
 C.G.M. 209.1
 AS BUILT NO'S
 151.4

INTERSTATE
 STATE OF CALIFORNIA
 TRANSPORTATION AGENCY
 DEPARTMENT OF PUBLIC WORKS
 DIVISION OF HIGHWAYS
 PROPOSED RELINQUISHMENT



DIST	COUNTY	ROUTE	POST MILES	SHEET	TOTAL SHEETS
7	LA	605/13.1-20.5		9	12

FILED WITH LOS ANGELES
 COUNTY RECORDER, RAY E. LEE
 FEB 18 1966

C. W. Hoyle
 DEPUTY DISTRICT ENGINEER
 DATE February 10, 1966

COUNTY OF

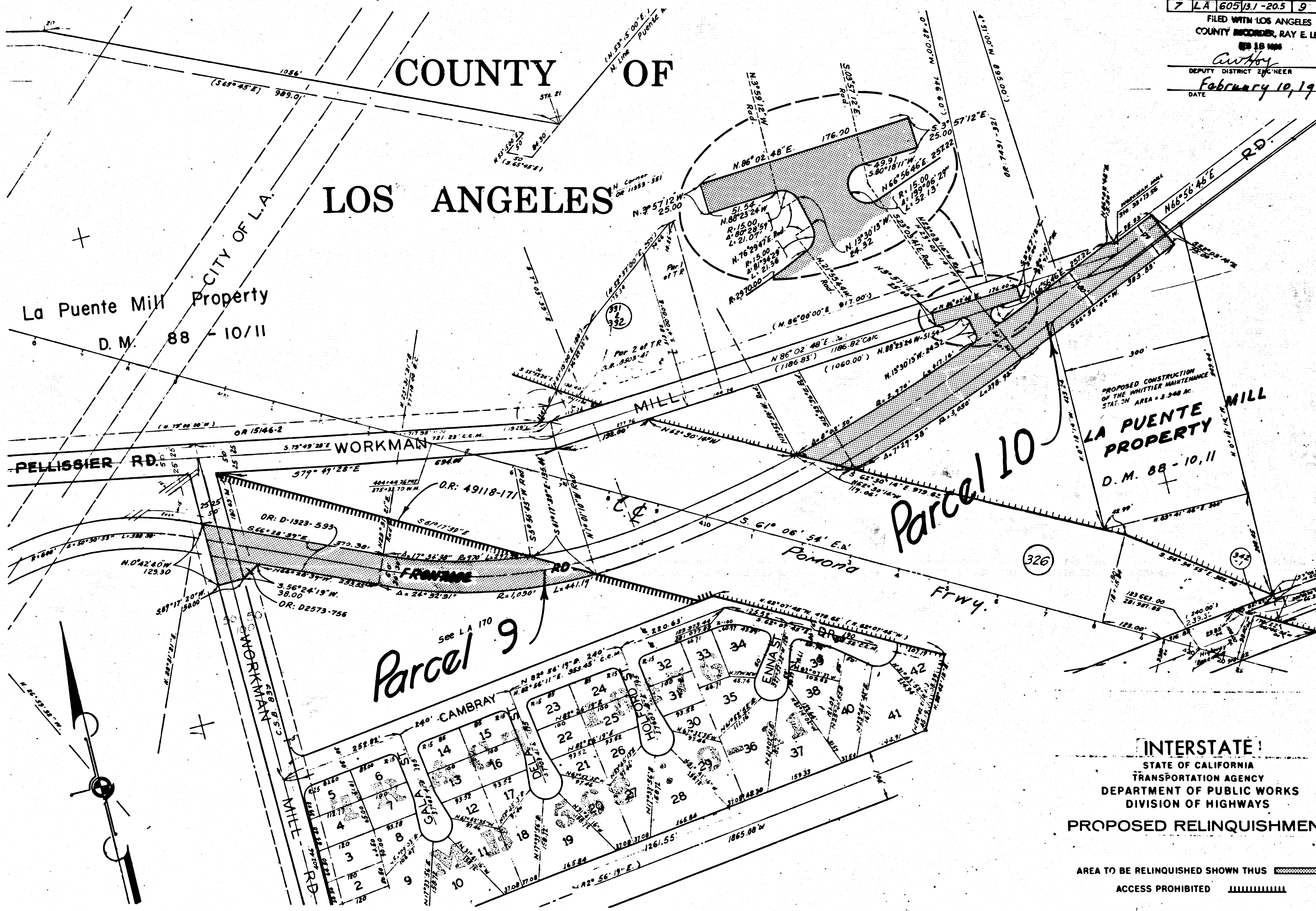
LOS ANGELES

La Puente Mill Property
 D.M. 88 - 10/11

PROPOSED CONSTRUCTION
 OF THE WHITTIER MAINTENANCE
 STATION AREA - 3.348 AC.
LA PUENTE MILL
 D.M. 88 - 10, 11

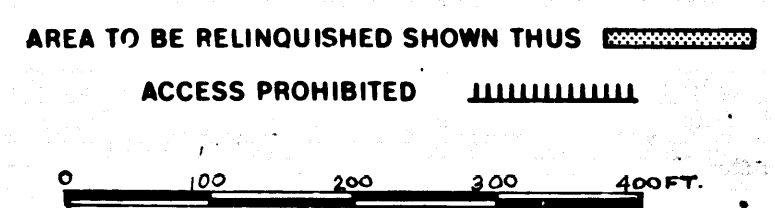
Parcel 10

Parcel 9



Revised 1-24-66
REL-315
 DRYN BY J.D.
 C.L.C. BY J.N.
 CKD BY J.D.
 BASE MAP NOS.
 F-1966
 REF. MAP NOS.
 C.C.M. 209.1
 AS BUILT NOS.
 151-4

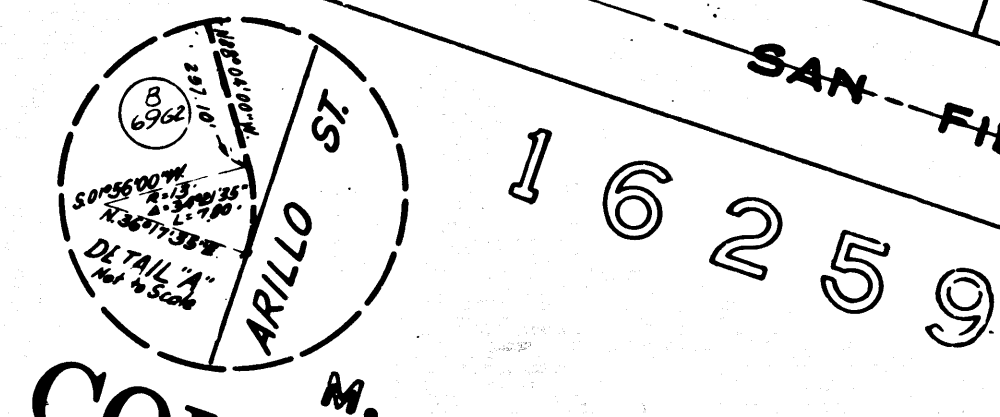
INTERSTATE!
 STATE OF CALIFORNIA
 TRANSPORTATION AGENCY
 DEPARTMENT OF PUBLIC WORKS
 DIVISION OF HIGHWAYS
PROPOSED RELINQUISHMENT



DIST	COUNTY	ROUTE	POST MILES	SHEET NO.	TOTAL SHEETS
7	LA	605	31-20.5	10	12

FILED WITH LOS ANGELES
 COUNTY RECORDER, RAY E. LEE
 FEB 18 1966

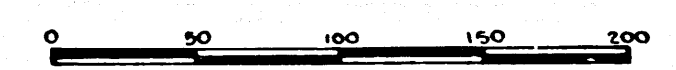
Ray E. Lee
 DEPUTY DISTRICT ENGINEER
 February 10, 1966
 DATE



COUNTY OF LOS ANGELES
 M.B. 16259 - 18 - 21
 SAN FIDEL AVE.

INTERSTATE
 STATE OF CALIFORNIA
 TRANSPORTATION AGENCY
 DEPARTMENT OF PUBLIC WORKS
 DIVISION OF HIGHWAYS
 PROPOSED RELINQUISHMENT

AREA TO BE RELINQUISHED SHOWN THUS [hatched pattern]
 ACCESS PROHIBITED [dashed line pattern]

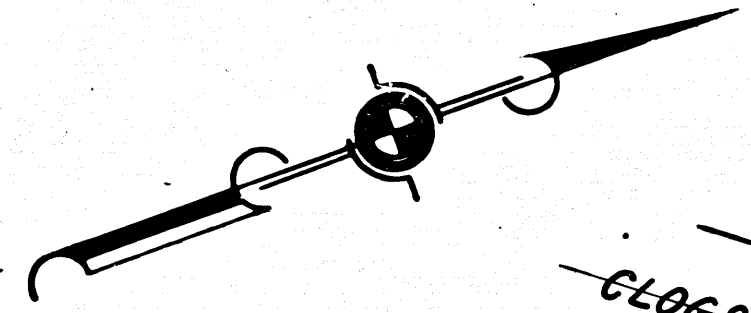


REL-315
 DRN BY J.D.
 CLC BY J.N.
 CKD BY J.D.
 BASE MAP NOS. F-1968
 REF. MAP NOS. 209.4
 A' BUILT NOS. 151-3

DIST.	COUNTY	ROUTE	POST MILES.	SHEET NO.	TOTAL SHEETS
7	LA	605	13.1 - 20.5	11	12

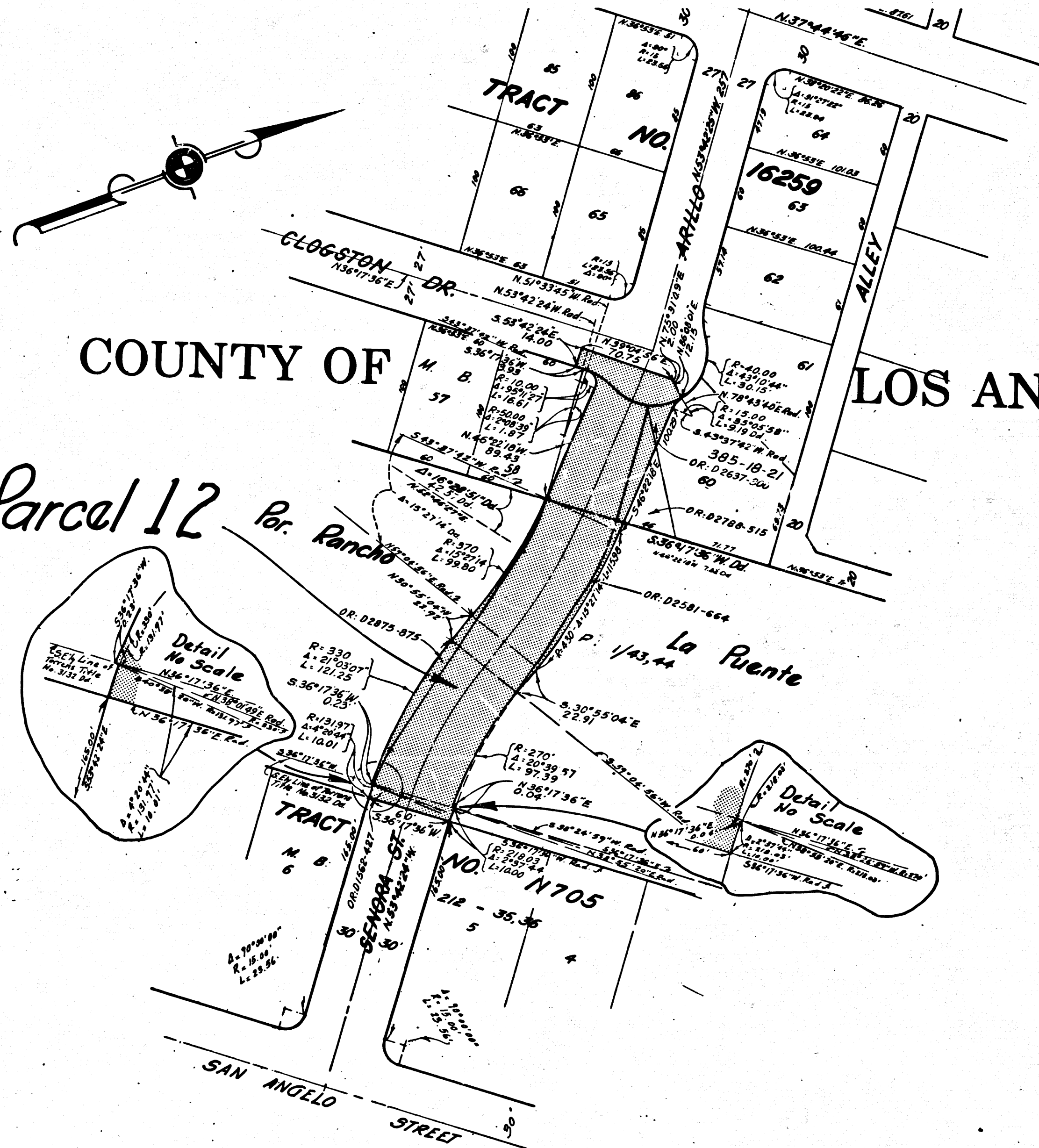
FILED WITH LOS ANGELES
COUNTY RECORDER, RAY E. LEE
FEB 18 1966

Ray E. Lee
DEPUTY DISTRICT ENGINEER
February 10, 1966
DATE



COUNTY OF LOS ANGELES

Parcel 12 Per. Rancho La Puente

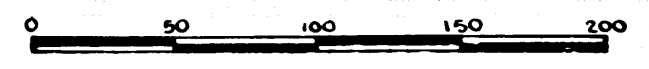


REL- 315

DRN BY J.D.
CLC BY J.N.
CKD BY J.D.
BASE MAP NO'S
F-1968
REF. MAP NO'S
209.1
AS BUILT NO'S

INTERSTATE
STATE OF CALIFORNIA
TRANSPORTATION AGENCY
DEPARTMENT OF PUBLIC WORKS
DIVISION OF HIGHWAYS
PROPOSED RELINQUISHMENT

AREA TO BE RELINQUISHED SHOWN THUS [Hatched Box]
ACCESS PROHIBITED [Dashed Line]

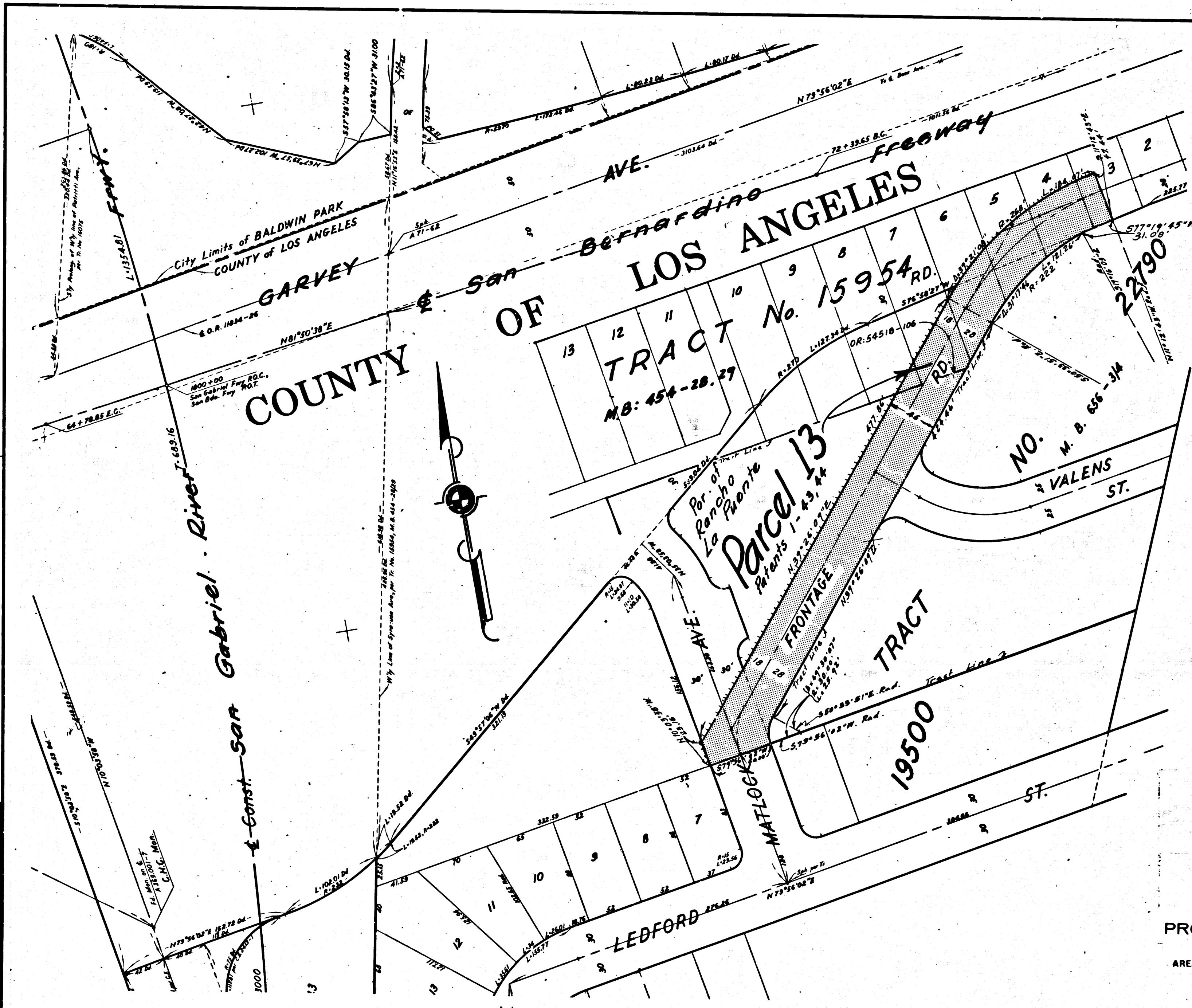


BOOK 3 PAGE 87

DIST.	COUNTY	ROUTE	POST MILES.	SHEET	TOTAL SHEETS
7	LA	605	13.1-20.5	12	12

FILED WITH LOS ANGELES
 COUNTY RECORDER, RAY E. LEE
 FEB 18 1966

Anthony
 DEPUTY DISTRICT ENGINEER
 DATE February 10, 1966





REL-315
 DWN BY J.D.
 CLC BY J.N.
 CKD BY F.M.
 BASE MAP NOS. F-1969

REF. MAP NOS. C.C.M. 209.4
 C.C.M. 209.45

AS BUILT NOS. 151-3

STATE OF CALIFORNIA
 TRANSPORTATION AGENCY
 DEPARTMENT OF PUBLIC WORKS
 DIVISION OF HIGHWAYS

PROPOSED RELINQUISHMENT

AREA TO BE RELINQUISHED SHOWN THUS 
 ACCESS PROHIBITED 

0 50 100 150 200