

DIST.	COUNTY	ROUTE	POST MILES.	SHEET No.	TOTAL SHEETS
7	LA	159	0.0/5.1	1	3

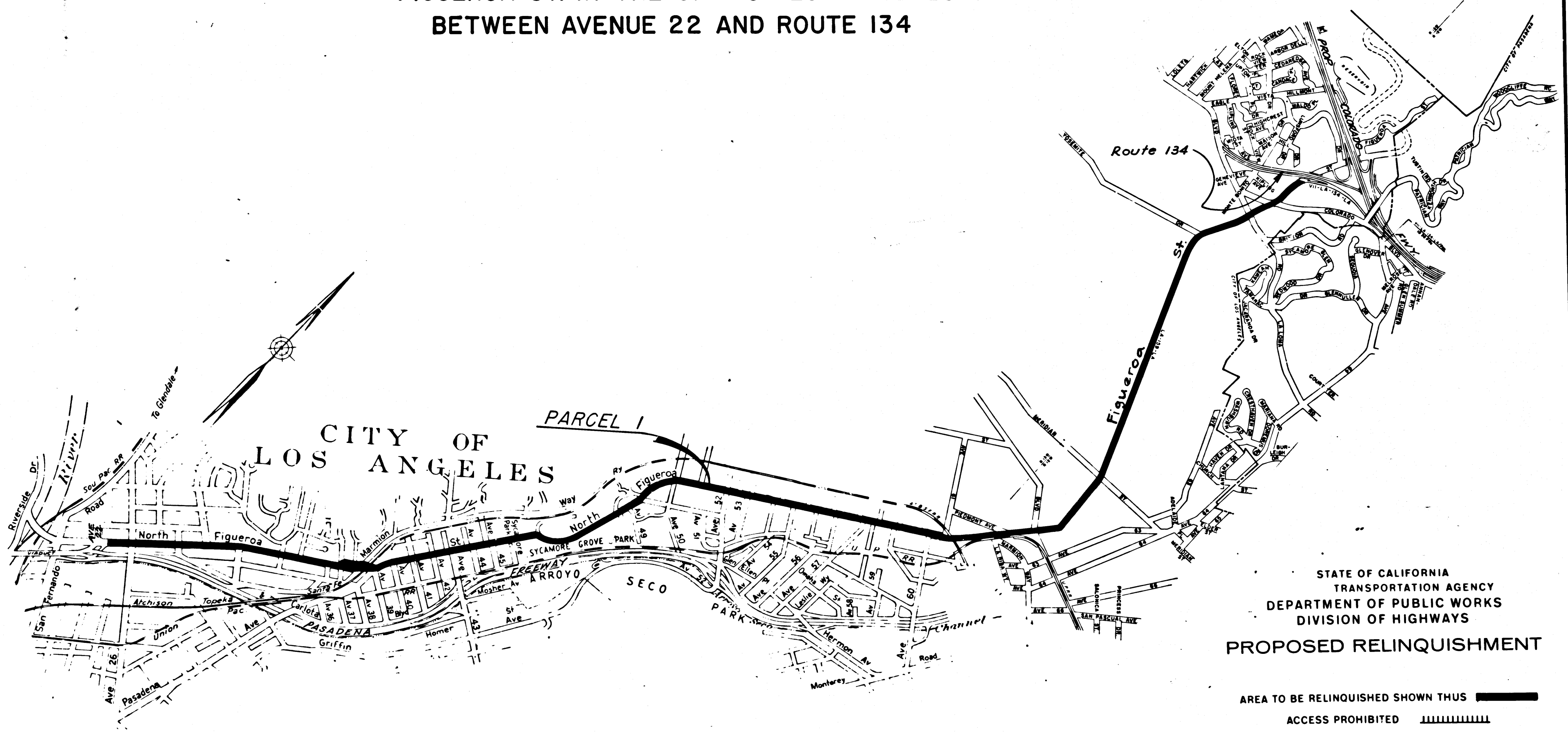
STATE OF CALIFORNIA
 TRANSPORTATION AGENCY
 DEPARTMENT OF PUBLIC WORKS
 DIVISION OF HIGHWAYS

**RIGHT OF WAY MAPS OF
 STATE HIGHWAY**

Curtis
 DEPUTY DISTRICT ENGINEER
 DATE February 16, 1966



2240
 RECORDED
 AT REQUEST OF
 DEPT. OF PUBLIC WORKS
 FEB. 24, 1966
 7 AM 9 A.M.
 IN BOOK 3
 AT PAGE 88
 OF STATE HIGHWAY MAPS
 OF LOS ANGELES COUNTY, CALIF.
 RAY E LEE
 COUNTY RECORDER
 FREE

FIGUEROA ST. IN THE CITY OF LOS ANGELES
 BETWEEN AVENUE 22 AND ROUTE 134



STATE OF CALIFORNIA
 TRANSPORTATION AGENCY
 DEPARTMENT OF PUBLIC WORKS
 DIVISION OF HIGHWAYS

PROPOSED RELINQUISHMENT

AREA TO BE RELINQUISHED SHOWN THUS 
 ACCESS PROHIBITED 
 0 600 1200 1800 2400

REL-450
 DRN BY BJK
 CLC BY FM
 CK'D BY RSD
 BASE MAP NO'S
 F1166-F1167

REF. MAP NO'S
 CCM 173.47

AS BUILT NO'S

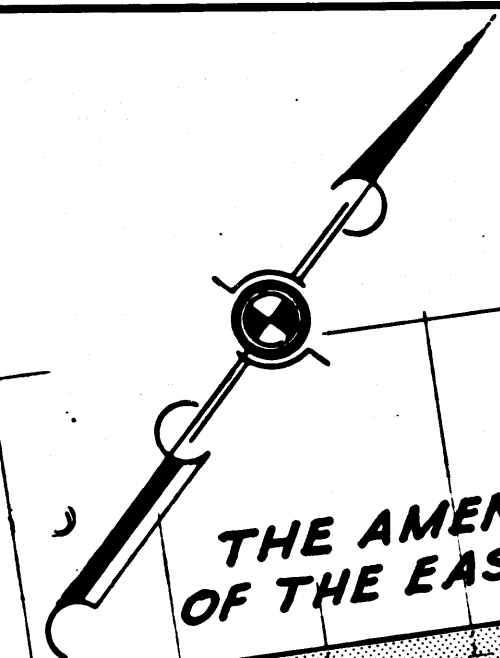
3-16-9

DIST.	COUNTY	ROUTE	POST MILES	SHEET No.	TOTAL SHEETS
7	LA	159	00/5.1	2	3

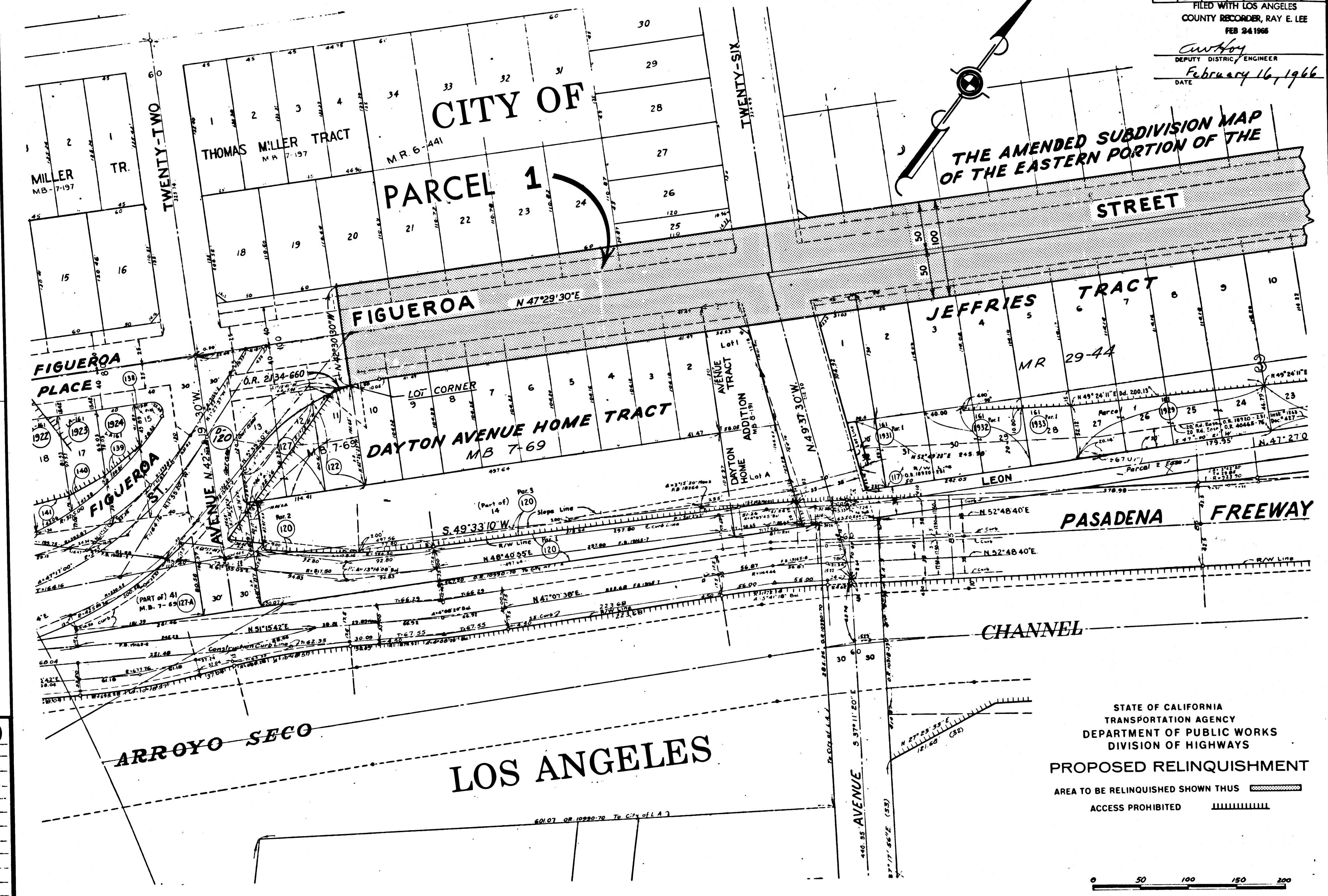
FILED WITH LOS ANGELES COUNTY RECORDER, RAY E. LEE FEB 24 1966

Curt Hoy DEPUTY DISTRICT ENGINEER

February 16, 1966 DATE



THE AMENDED SUBDIVISION MAP OF THE EASTERN PORTION OF THE STREET



REL-450
 DRN BY BJK
 C.L.C. BY FM
 CK'D BY RSD
 BASE MAP NO'S F 1765
 REF. MAP NO'S
 AS BUILT NO'S

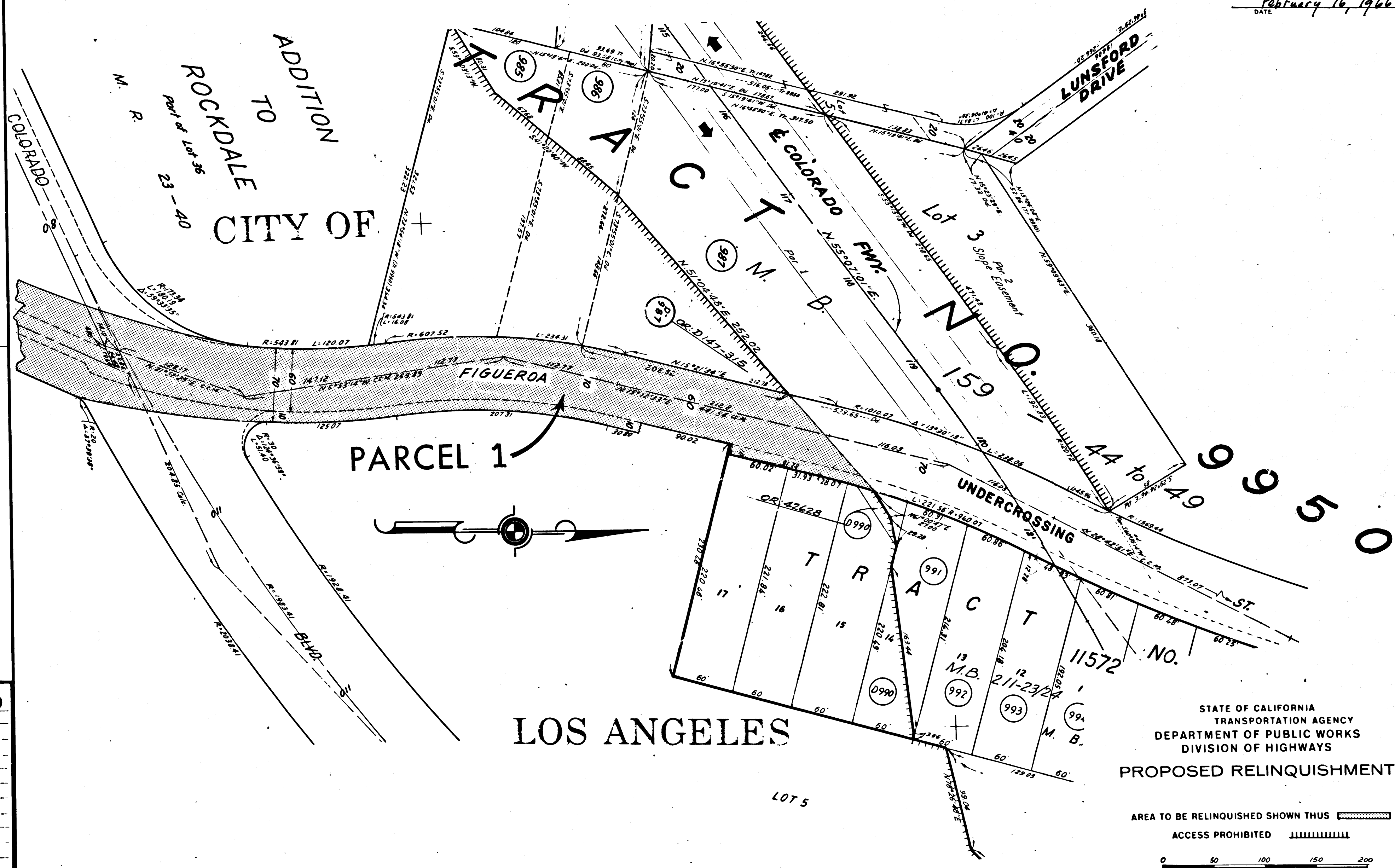
STATE OF CALIFORNIA
 TRANSPORTATION AGENCY
 DEPARTMENT OF PUBLIC WORKS
 DIVISION OF HIGHWAYS
 PROPOSED RELINQUISHMENT
 AREA TO BE RELINQUISHED SHOWN THUS [hatched pattern]
 ACCESS PROHIBITED [hatched pattern]



DIST	COUNTY	ROUTE	POST MILES	SHEET No.	TOTAL SHEETS
7	LA	159	0.0/5.1	3	3

FILED WITH LOS ANGELES
COUNTY RECORDER, RAY E. LEE
FEB 24 1966

Anthony
DEPUTY DISTRICT ENGINEER
February 16, 1966
DATE



REL-450
DRN BY DJK
C'LC BY FM
CK'D BY RSD
BASE MAP NO'S
E1166 F1167

REF. MAP NO'S
CCM. 173.47
AS BUILT NO'S

STATE OF CALIFORNIA
TRANSPORTATION AGENCY
DEPARTMENT OF PUBLIC WORKS
DIVISION OF HIGHWAYS
PROPOSED RELINQUISHMENT