

341-100-4/13 9.53

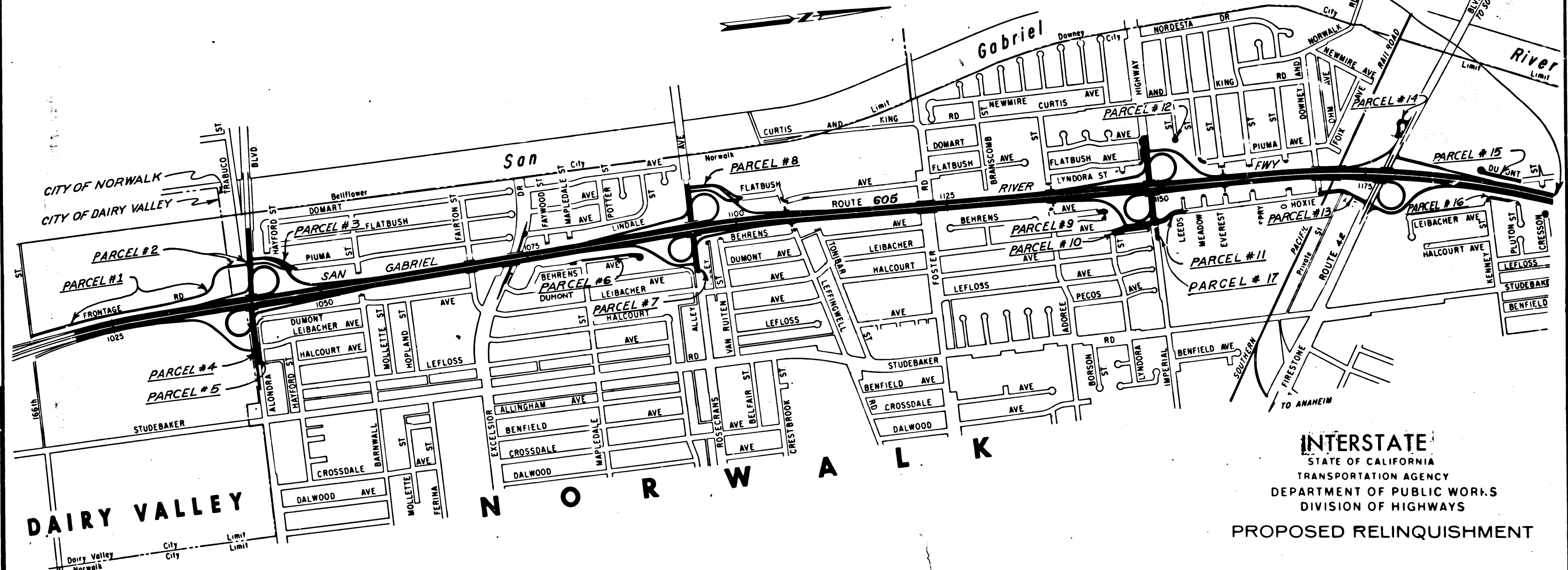
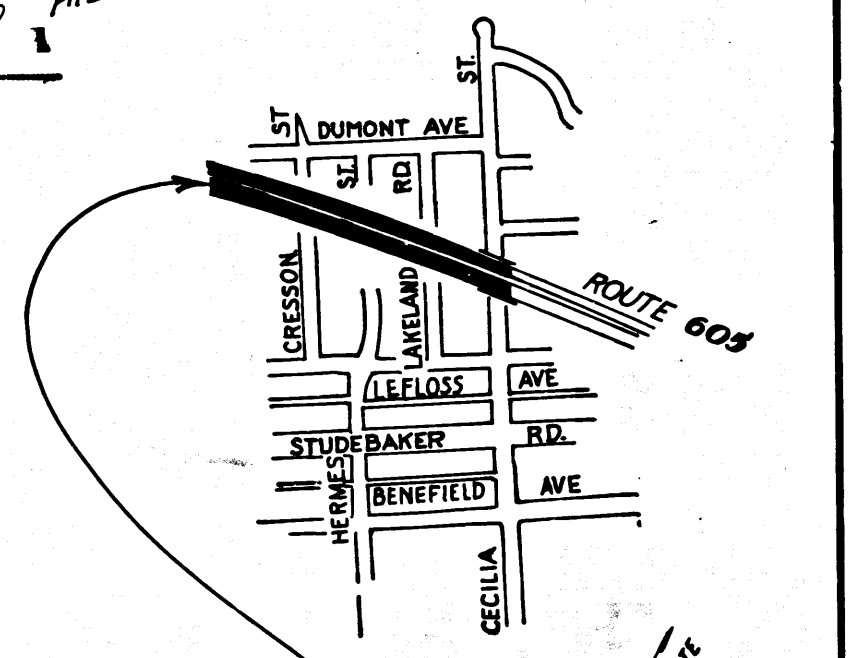
BOOK 3 PAGE 91			
DIST	COUNTY	ROUTE	POST MILES.
7	LA	605	5.9-8.9
			NO. SHEETS
			1 13

STATE OF CALIFORNIA
 TRANSPORTATION AGENCY
 DEPARTMENT OF PUBLIC WORKS
 DIVISION OF HIGHWAYS

2017
 RECORDED
 AT REQUEST OF
 DEPT. OF PUBLIC WORKS
 FEB. 28, 1966
 53 PM 9 A.M.
 3
 91
 OF STATE HIGHWAY MAPS
 LOS ANGELES COUNTY, CALIF.
 RAY E. LEE
 COUNTY RECORDER

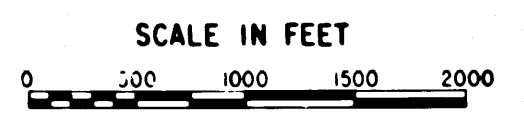
C. W. Boy
 DEPUTY DISTRICT ENGINEER
 February 18, 1966
 DATE

RIGHT OF WAY MAPS OF
STATE HIGHWAY
 In Los Angeles County between 166th Street in Dairy Valley and
 Cecilia Street at the north city limit of Norwalk



REL-482
 469
 DRN BY B.J.K.
 C.L.C. BY J.W.H.
 CK'D BY J.D.
 BASE MAP NO'S
 REF. MAP NO'S
 AS BUILT NO'S

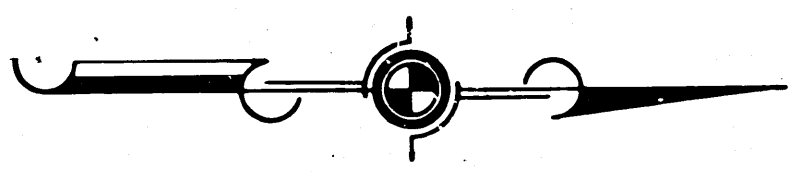
INTERSTATE
 STATE OF CALIFORNIA
 TRANSPORTATION AGENCY
 DEPARTMENT OF PUBLIC WORKS
 DIVISION OF HIGHWAYS
 PROPOSED RELINQUISHMENT



DIST	COUNTY ROUTE	POST MILES	SHEET NO.	TOTAL SHEETS
7	L.A. 605	5.3-8.9	2	13

FILED WITH LOS ANGELES COUNTY RECORDER, RAY E. LEE
FEB 28 1966

Cawthay
DEPUTY DISTRICT ENGINEER
February 18, 1966
DATE



ST.

Road Easement - O.R. 12532-225

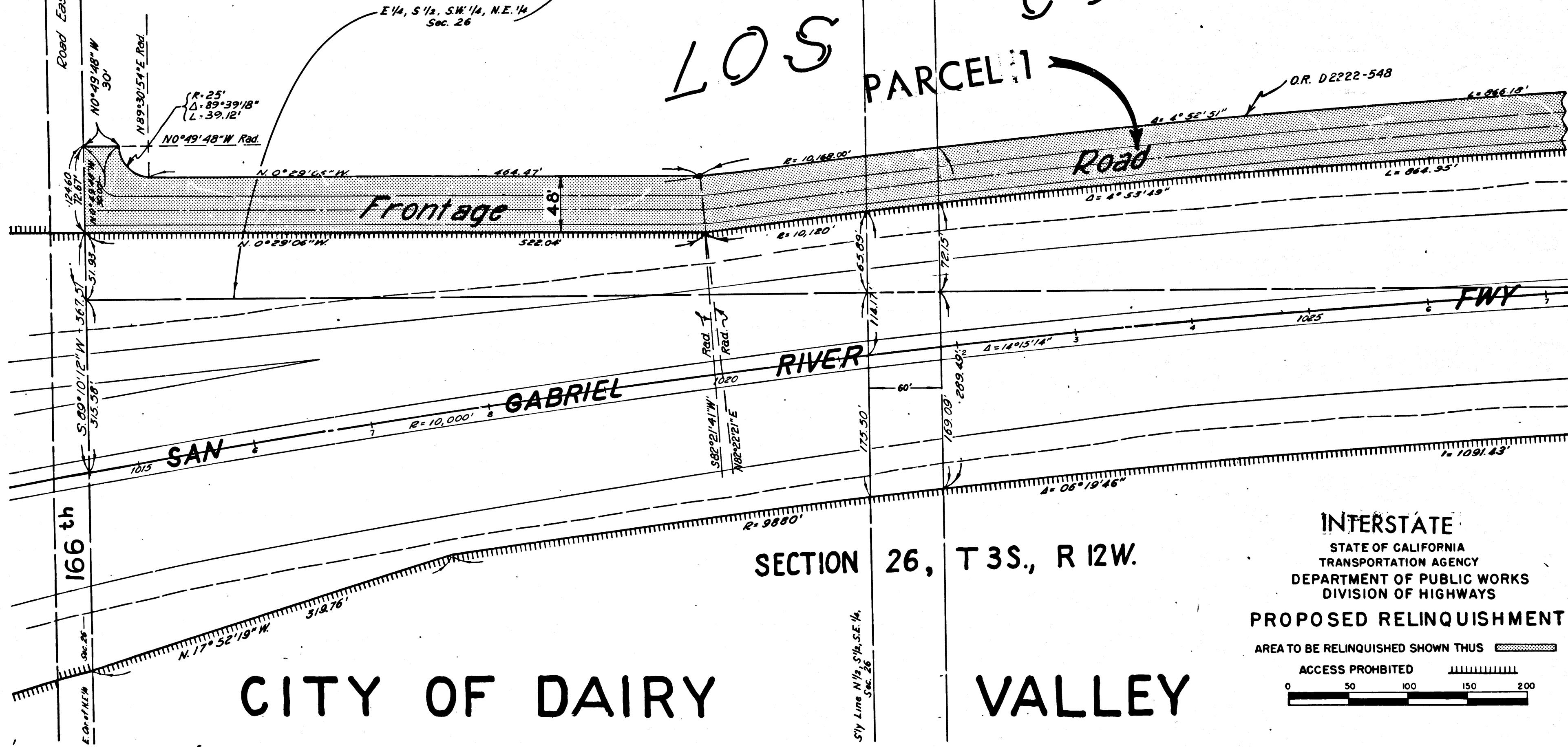
EDISON CO.

RANCHO

LOS COYOTES

PARCEL 1

O.R. D2222-548





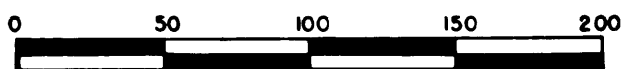
REVISED JAN 19-66

482
REL-469
DRN BY B. J. K.
C.L.C. BY J. W. H.
CK'D BY J. D.
BASE MAP '05
F-1958
REF. MAP NOS.
AS BUILT NO'S
162-9

SECTION 26, T 3S., R 12W.

CITY OF DAIRY

VALLEY

INTERSTATE
STATE OF CALIFORNIA
TRANSPORTATION AGENCY
DEPARTMENT OF PUBLIC WORKS
DIVISION OF HIGHWAYS
PROPOSED RELINQUISHMENT
AREA TO BE RELINQUISHED SHOWN THUS 
ACCESS PROHIBITED 


DIST	COUNTY	ROUTE	POST MILES	SHEET NO.	TOTAL SHEETS
7	L.A.	605	5.9-8.9	3	13

FILED WITH LOS ANGELES
COUNTY RECORDER, RAY E. LEE

FEB 28 1966

DEPUTY DISTRICT ENGINEER

February 18, 1966
DATE

RANCHO

LOS

COYOTES

CITY

T.3S. R.12W.

O.R. 41819-141 et seq.

OF

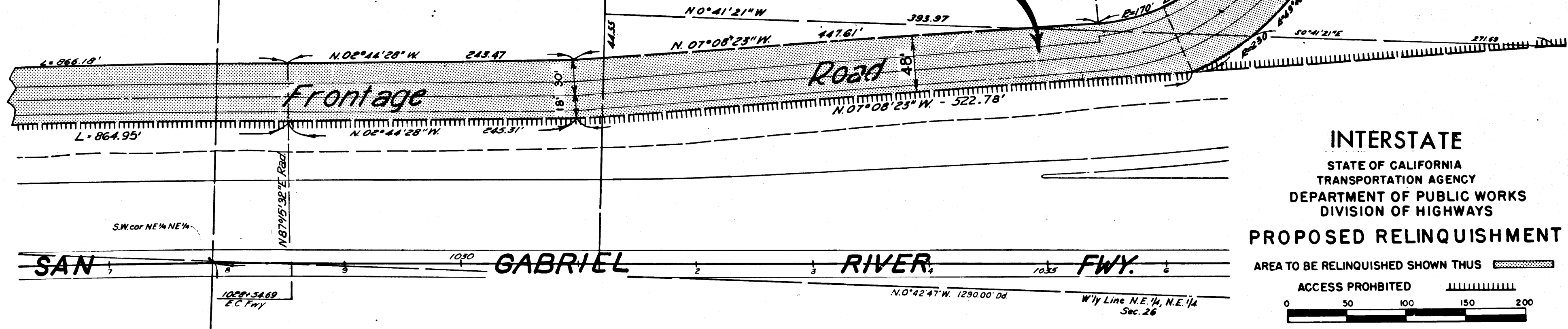
SECTION 26

DAIRY VALLEY

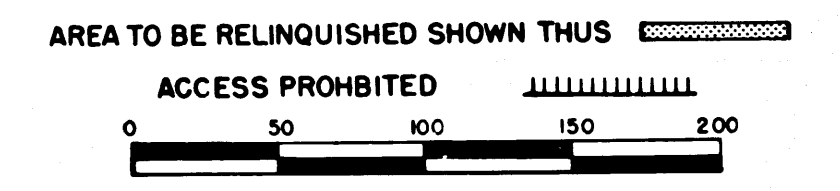
NW 1/4 NE 1/4

N.W. 1/4, N.E. 1/4
Sec. 26

PARCEL 1



INTERSTATE
STATE OF CALIFORNIA
TRANSPORTATION AGENCY
DEPARTMENT OF PUBLIC WORKS
DIVISION OF HIGHWAYS
PROPOSED RELINQUISHMENT



REVISED JAN 19-66

482
REL-469

DRN BY B.J.K.

C.L.C BY J.W.H.

C.K'D BY J.D.

BASE MAP NO'S

F-1958

REF. MAP NO'S

AS BUILT NO'S

162-9

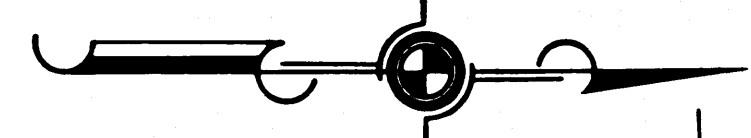
DIST	COUNTY	ROUTE	POST MILES	SHEET NO	TOTAL SHEETS
7	L.A.	605	5.3-8.9	4	13

FILED WITH LOS ANGELES COUNTY RECORDER, RAY E. LEE

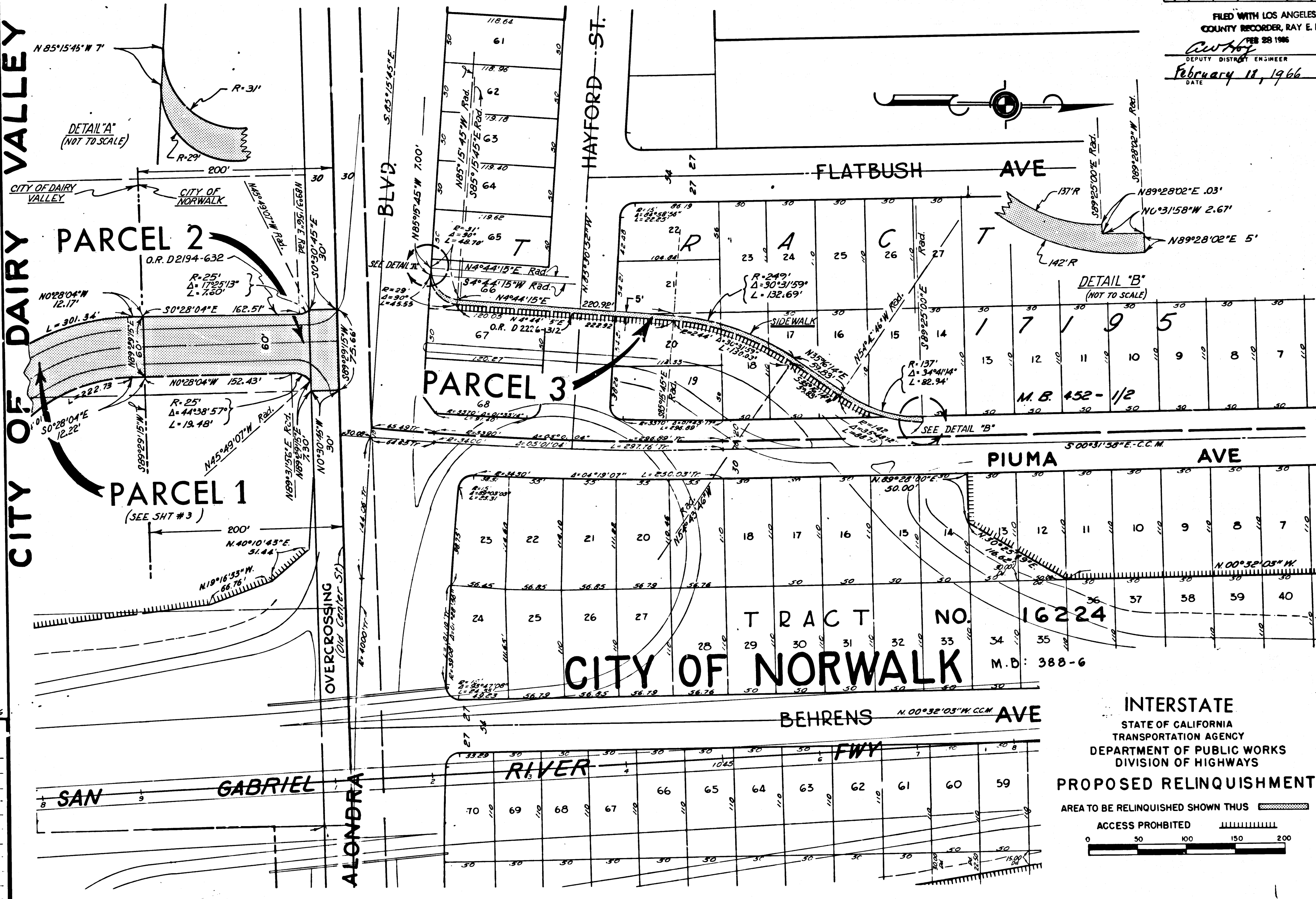
FEB 28 1966

DEPUTY DISTRICT ENGINEER

February 11, 1966



CITY OF DAIRY VALLEY



DETAIL 'A' (NOT TO SCALE)

DETAIL 'B' (NOT TO SCALE)

REVISED JAN 19 66

482
REL-469

DRN BY B.J.K.

CLC BY J.W.H.

CK'D BY J.D.

BASE MAP NO'S
F-1958

REF. MAP NO'S

AS BUILT NO'S
162-9

INTERSTATE
STATE OF CALIFORNIA
TRANSPORTATION AGENCY
DEPARTMENT OF PUBLIC WORKS
DIVISION OF HIGHWAYS

PROPOSED RELINQUISHMENT

AREA TO BE RELINQUISHED SHOWN THUS

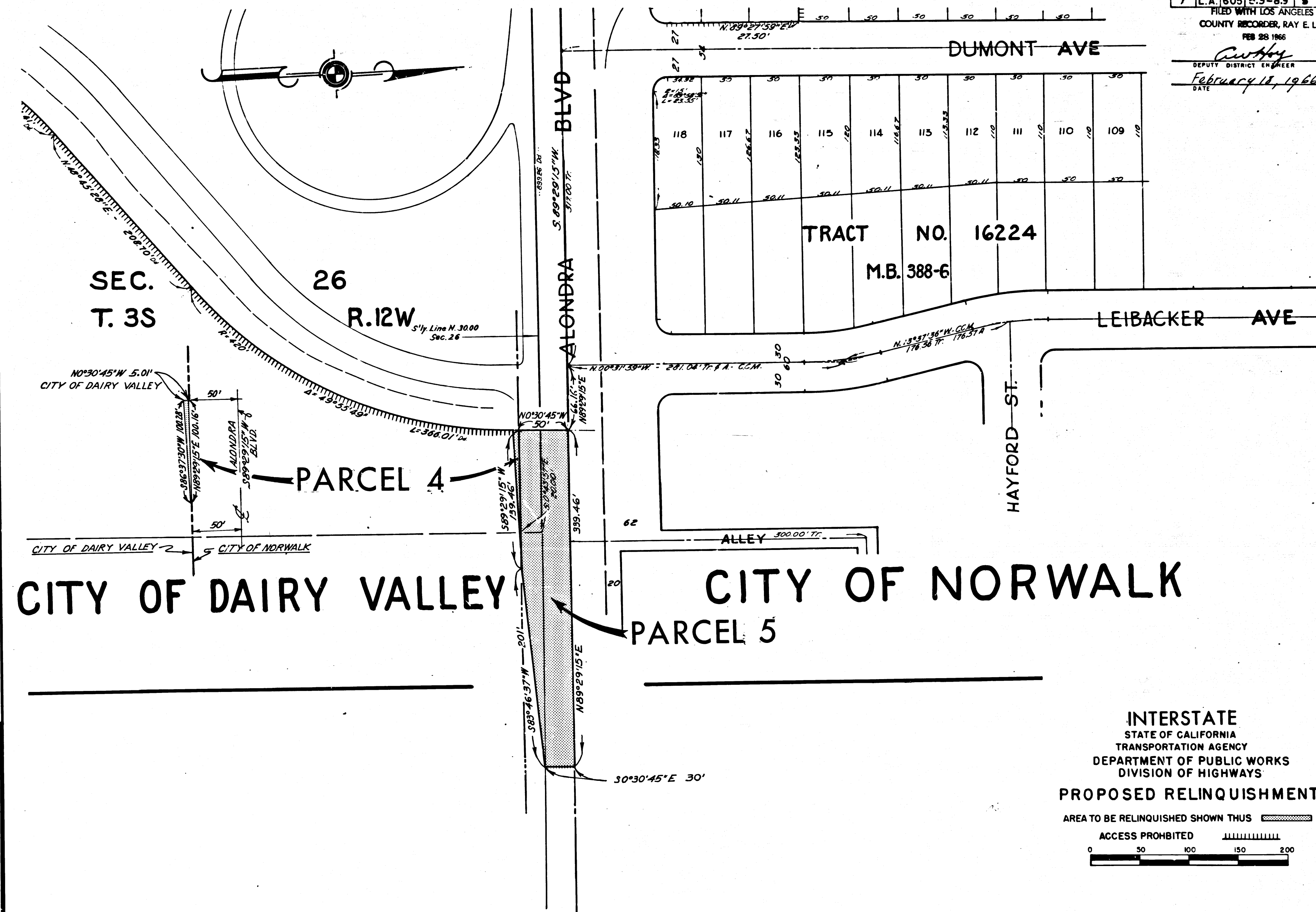
ACCESS PROHIBITED

0 50 100 150 200



DIST	COUNTY	ROUTE	POST MILES	SHEET NO.	TOTAL SHEETS
7	L.A.	605	2.3-8.9	8	13

FILED WITH LOS ANGELES
COUNTY RECORDER, RAY E. LEE
FEB 23 1966

Ray E. Lee
DEPUTY DISTRICT ENGINEER
February 18, 1966
DATE



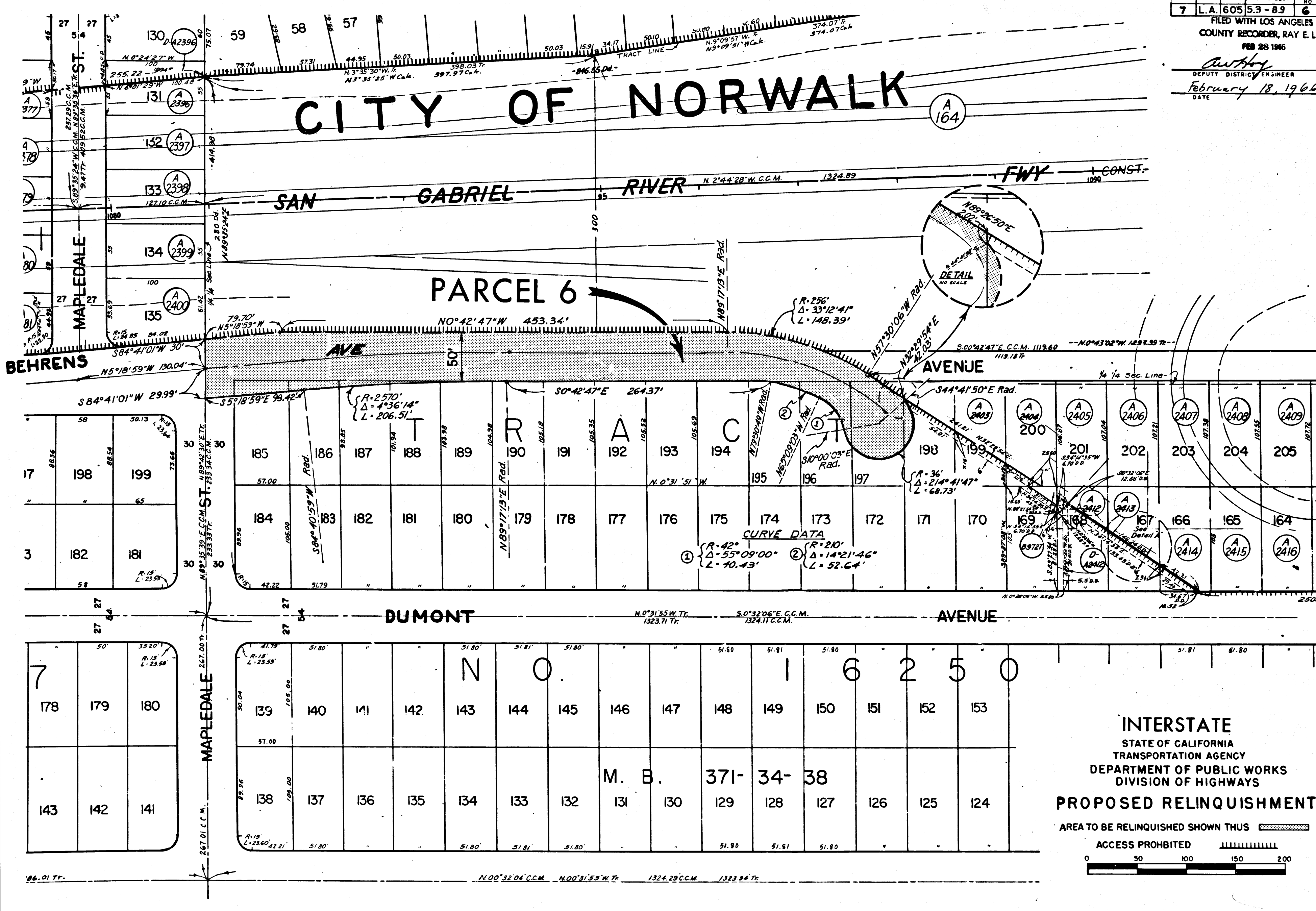
482
REL-469
DRN BY B. J. K.
C.L.C. BY J. W. H.
CK'D BY J. D.
BASE MAP NO'S
F-1958
REF. MAP NO'S
AS BUILT NO'S
162-9

INTERSTATE
STATE OF CALIFORNIA
TRANSPORTATION AGENCY
DEPARTMENT OF PUBLIC WORKS
DIVISION OF HIGHWAYS
PROPOSED RELINQUISHMENT
AREA TO BE RELINQUISHED SHOWN THUS 
ACCESS PROHIBITED 
0 50 100 150 200

DIST	COUNTY	ROUTE	POST MILES.	SHEET NO.	TOTAL SHEETS
7	L.A.	605	5.3-8.9	6	13

FILED WITH LOS ANGELES
COUNTY RECORDER, RAY E. LEE
FEB 28 1966

Anthony
DEPUTY DISTRICT ENGINEER
February 18, 1966
DATE



482
REL-469
DRN BY: B.J.K.
C.L.C. BY: J.W.H.
CK'D BY: J.D.
BASE MAP NOS.
F-1958,
1959, 1960
REF. MAP NOS.
AS BUILT NOS.
162-9

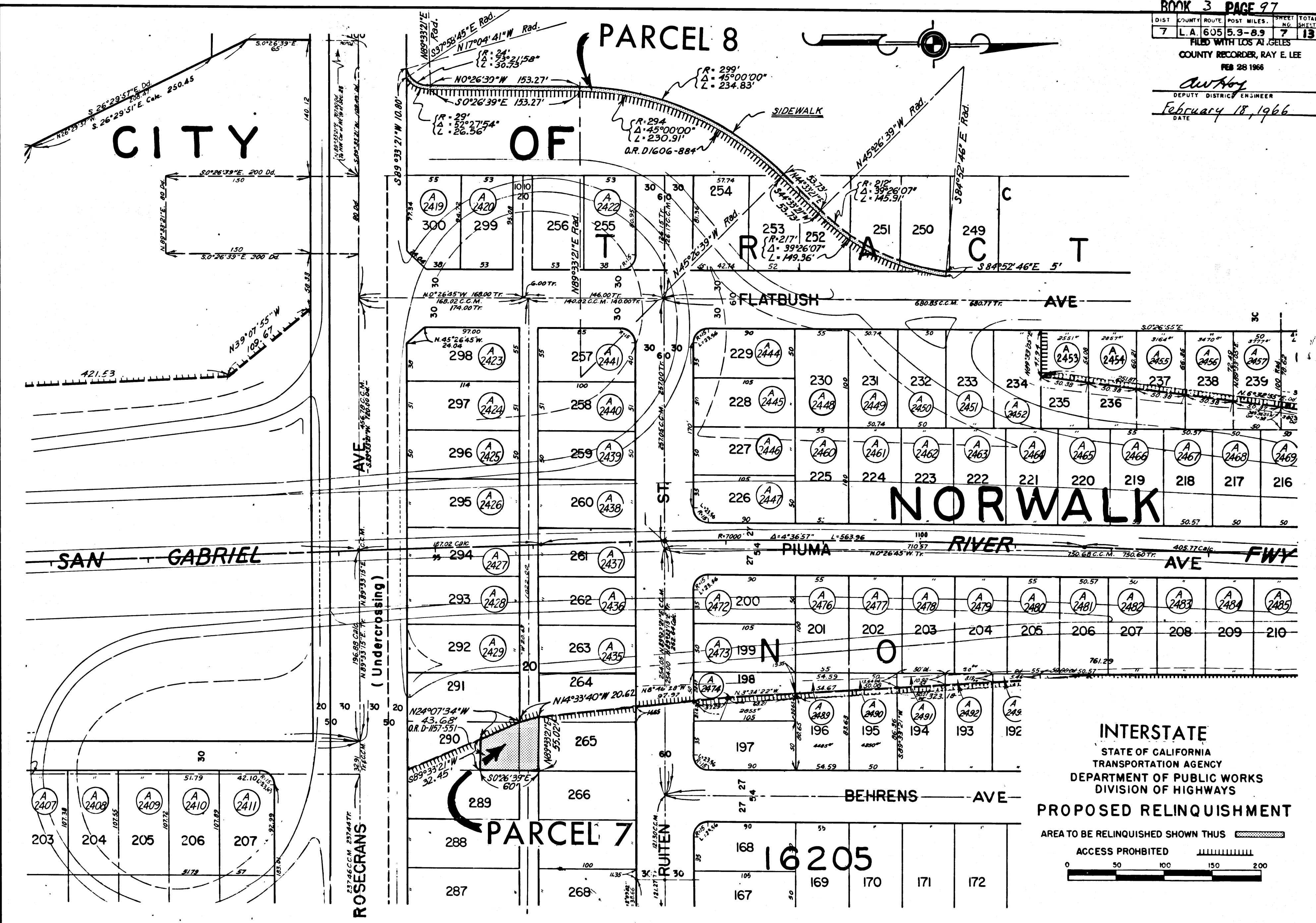
INTERSTATE
STATE OF CALIFORNIA
TRANSPORTATION AGENCY
DEPARTMENT OF PUBLIC WORKS
DIVISION OF HIGHWAYS
PROPOSED RELINQUISHMENT
AREA TO BE RELINQUISHED SHOWN THUS [Hatched Box]
ACCESS PROHIBITED [Hatched Box]

0 50 100 150 200



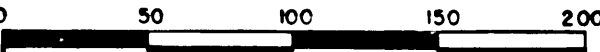
DIST	COUNTY	ROUTE	POST MILES	SHEET NO.	TOTAL SHEETS
7	L.A.	605	5.3-8.9	7	13

FILED WITH LOS AT GELES
COUNTY RECORDER, RAY E. LEE
FEB 28 1966

Anthony
DEPUTY DISTRICT ENGINEER
February 18, 1966
DATE



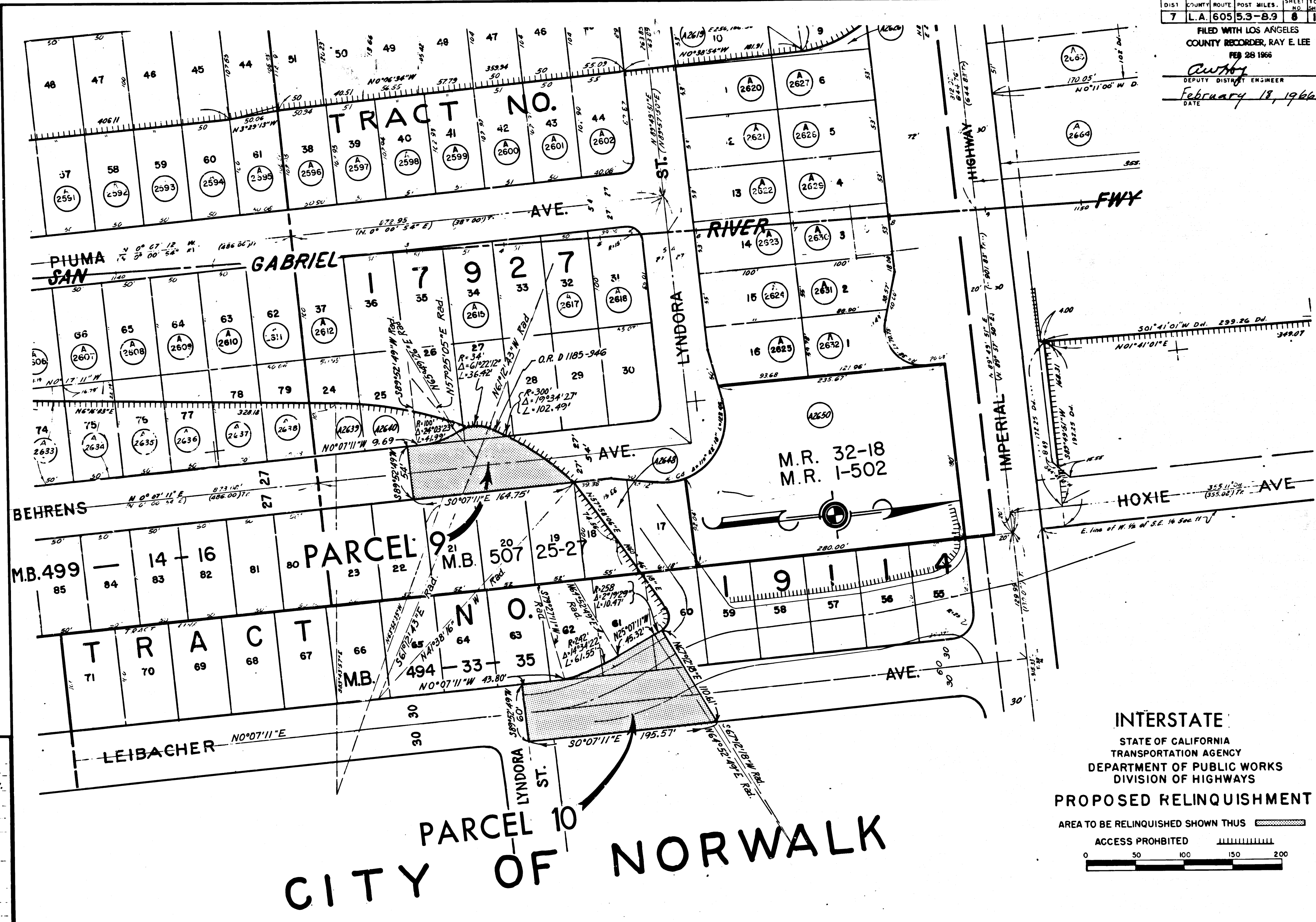
REVISED JAN 19-66
REL-469
DRN BY B. J. K.
CLC BY J. W. H.
CK'D BY J. D.
BASE MAP NO'S
1959
REF. MAP NO'S
AS BUILT NO'S
162-9

INTERSTATE
STATE OF CALIFORNIA
TRANSPORTATION AGENCY
DEPARTMENT OF PUBLIC WORKS
DIVISION OF HIGHWAYS
PROPOSED RELINQUISHMENT
AREA TO BE RELINQUISHED SHOWN THUS 
ACCESS PROHIBITED 


DIST	COUNTY	ROUTE	POST MILES	SHEET NO.	TOTAL SHEETS
7	L.A.	605	5.3-8.9	8	13

FILED WITH LOS ANGELES
COUNTY RECORDER, RAY E. LEE
FEB 28 1966

Cutler
DEPUTY DISTRICT ENGINEER
DATE February 18, 1966



482
REL-469
DR'N BY B. J. K.
C'LC BY J. W. H.
C'KD BY J. D.
BASE MAP NO'S
1960
REL. MAP NOS.
AS BUILT NO'S
167-9

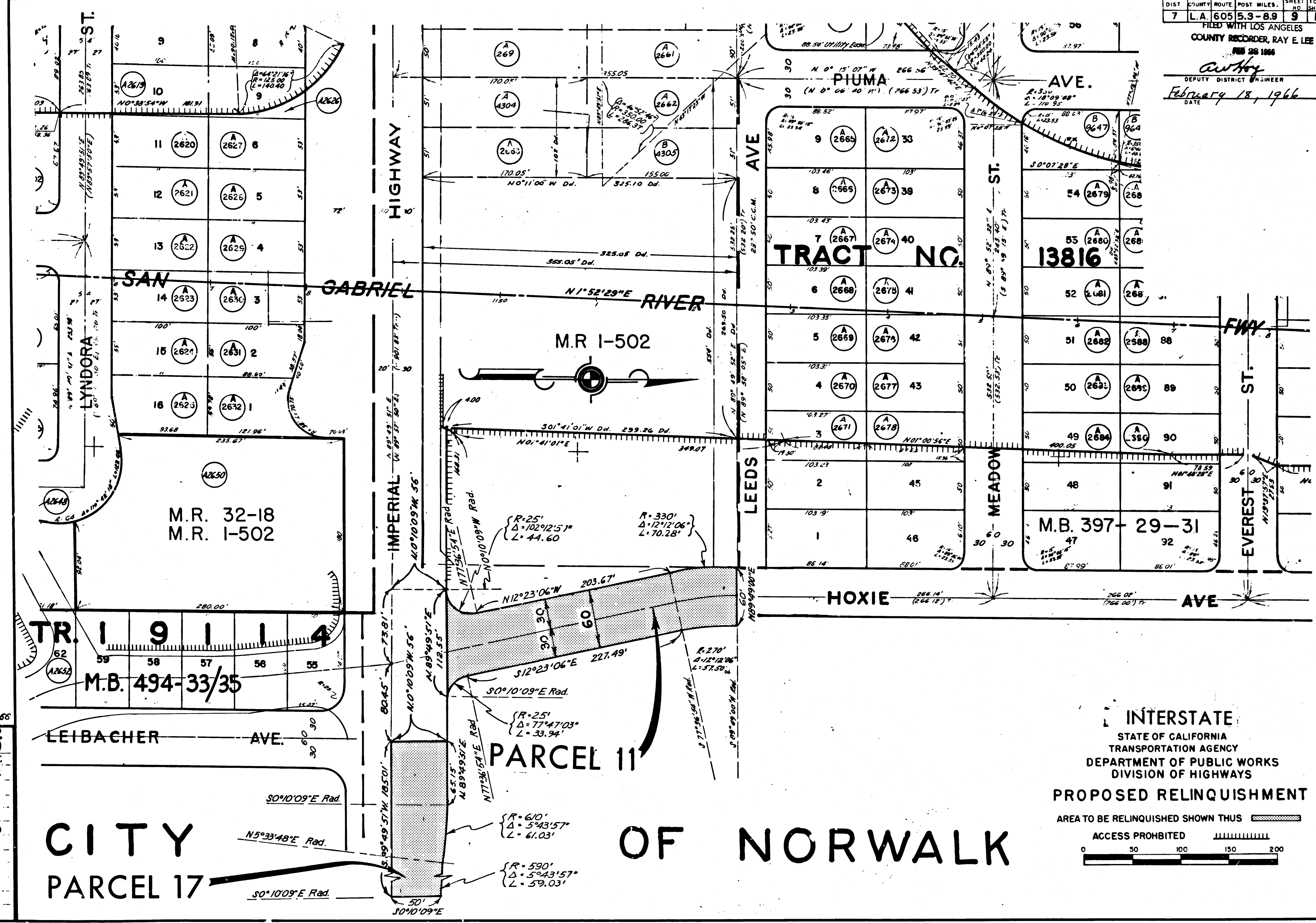
CITY OF NORWALK

INTERSTATE
STATE OF CALIFORNIA
TRANSPORTATION AGENCY
DEPARTMENT OF PUBLIC WORKS
DIVISION OF HIGHWAYS
PROPOSED RELINQUISHMENT
AREA TO BE RELINQUISHED SHOWN THUS
ACCESS PROHIBITED
0 50 100 150 200

DIST	COUNTY	ROUTE	POST MILES	SHEET NO.	TOTAL SHEETS
7	L.A.	605	5.3-8.9	9	13

FILED WITH LOS ANGELES
 COUNTY RECORDER, RAY E. LEE
 FEB 28 1966

Arthur
 DEPUTY DISTRICT ENGINEER
 February 18, 1966
 DATE



REVISED 1-20-65
 482
 REL-469
 DRN BY B.J.K.
 C.L.C. BY J.W.H.
 CK'D BY J.D.
 BASE MAP NOS.
 F-1960
 REF. MAP NOS.
 AS BUILT NO'S.
 162-9

INTERSTATE
 STATE OF CALIFORNIA
 TRANSPORTATION AGENCY
 DEPARTMENT OF PUBLIC WORKS
 DIVISION OF HIGHWAYS
 PROPOSED RELINQUISHMENT
 AREA TO BE RELINQUISHED SHOWN THUS
 ACCESS PROHIBITED
 0 50 100 150 200

CITY OF NORWALK

PARCEL 17

PARCEL 11

TRACT NO. 13816

M.R. I-502

M.R. 32-18
 M.R. I-502

M.B. 494-33/35

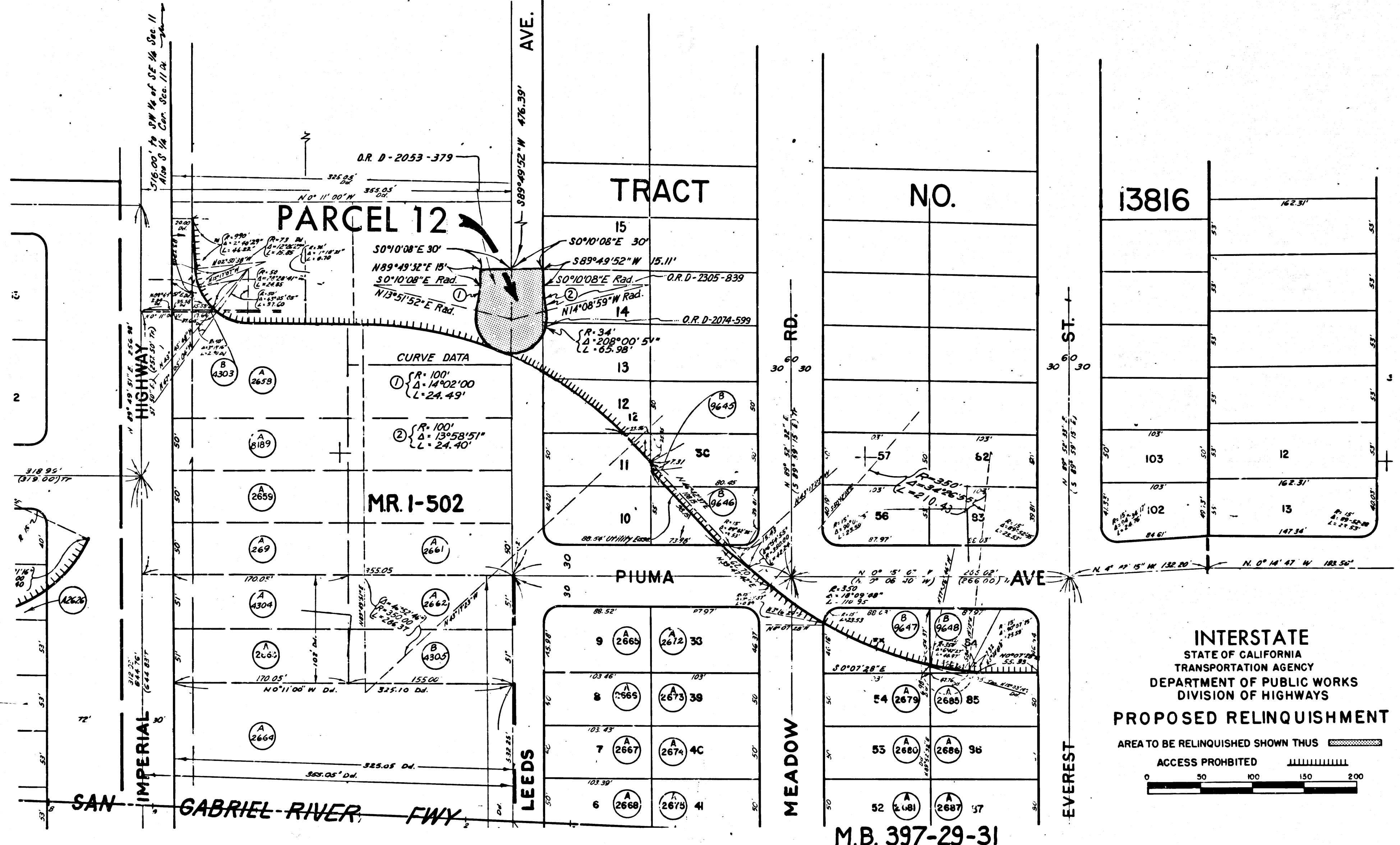
M.B. 397-29-31

DIST	COUNTY	ROUTE	POST MILES.	SHEET NO.	TOTAL SHEETS
7	L.A.	605	5.3-8.9	10	13

FILED WITH LOS ANGELES
COUNTY RECORDER, RAY E. LEE
FEB 28 1966

Anthony
DEPUTY DISTRICT ENGINEER
February 18, 1966
DATE

CITY OF NORWALK



482
REL-469
DRN BY: B.J.K.
C.L.C BY: J.W.H.
CK'D BY: J.D.
BASE MAP NO'S
1960
REF. MAP NO'S
AS BUILT NO'S
192-9

INTERSTATE
STATE OF CALIFORNIA
TRANSPORTATION AGENCY
DEPARTMENT OF PUBLIC WORKS
DIVISION OF HIGHWAYS

PROPOSED RELINQUISHMENT

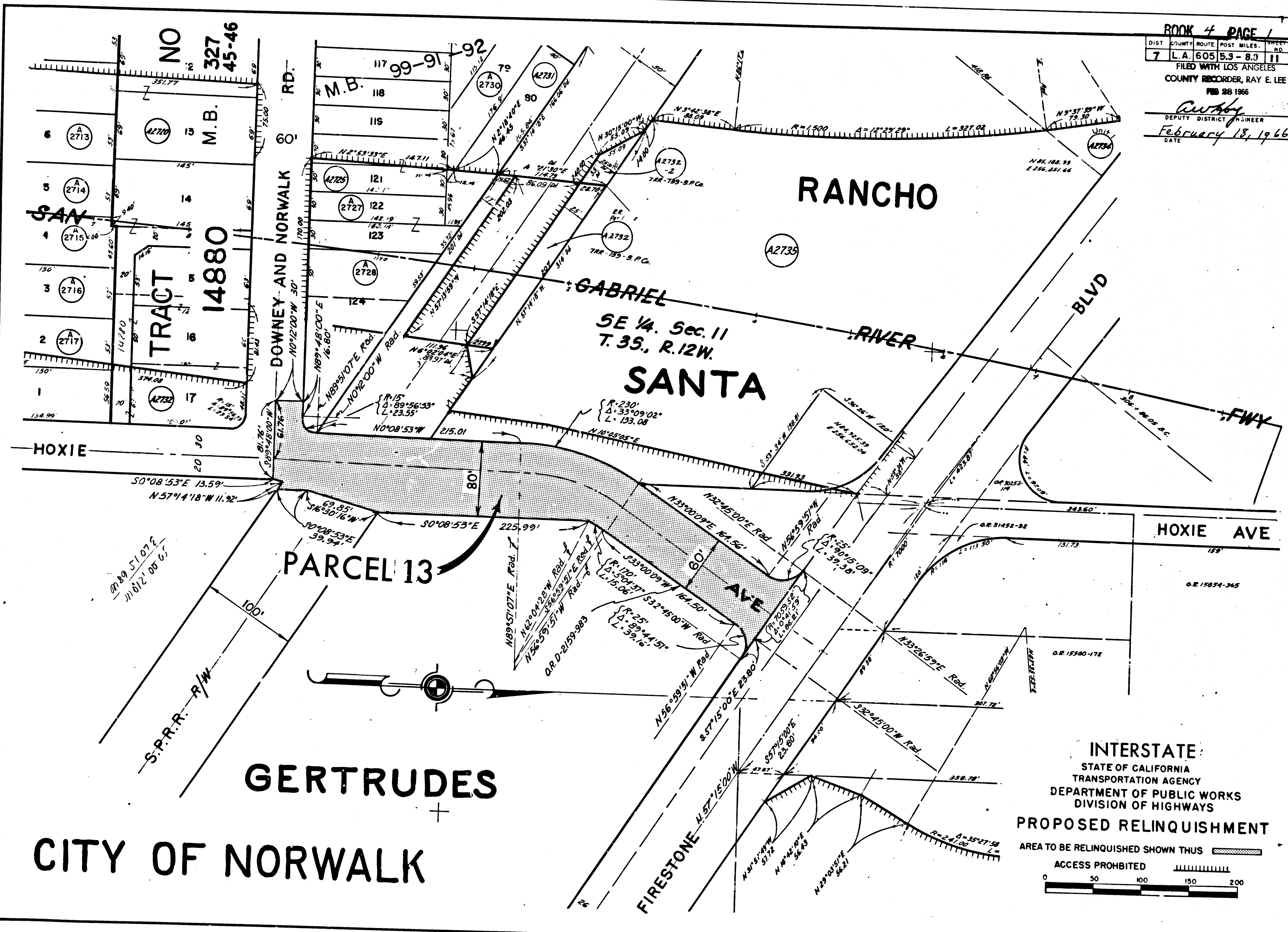
AREA TO BE RELINQUISHED SHOWN THUS

ACCESS PROHIBITED



0 50 100 150 200

M.B. 397-29-31

BOOK 4 PAGE 1
 DIST COUNTY ROUTE POST MILES SHEET TOTAL
 7 L.A. 605 5.3 - 8.3 11 13
 FILED WITH LOS ANGELES
 COUNTY RECORDER, RAY E. LEE
 FEB 28 1966
 DEPUTY DISTRICT ENGINEER
 February 18, 1966
 DATE



REVISED 1-20-66
 482
 REL-469
 DRN BY B. J. K.
 C.L.C. BY J. W. H.
 CK'D BY J. D.
 BASE MAP NO'S
 F-1960
 REF. MAP NO'S
 AS BUILT NO'S
 162-9

INTERSTATE
 STATE OF CALIFORNIA
 TRANSPORTATION AGENCY
 DEPARTMENT OF PUBLIC WORKS
 DIVISION OF HIGHWAYS
 PROPOSED RELINQUISHMENT
 AREA TO BE RELINQUISHED SHOWN THUS 
 ACCESS PROHIBITED 
 0 50 100 150 200

DIST	COUNTY	ROUTE	POST MILES	SHEET NO.	TOTAL SHEETS
7	L.A.	605	5.3-8.9	13	13

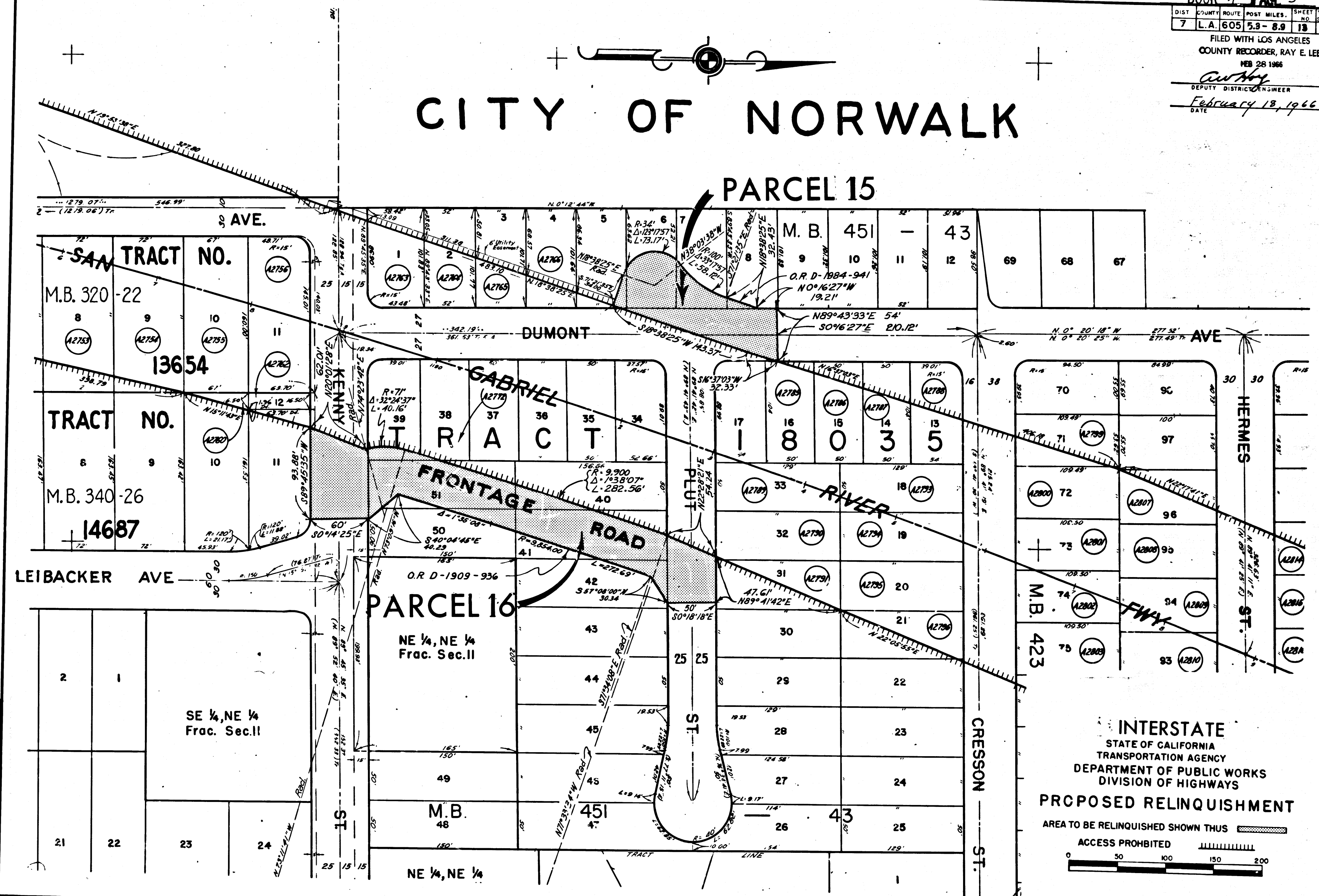
FILED WITH LOS ANGELES
COUNTY RECORDER, RAY E. LEE
FEB 26 1966

C. W. Hoy
DEPUTY DISTRICT ENGINEER

February 18, 1966
DATE

CITY OF NORWALK

PARCEL 15



482
REL-469
DWN BY B. J. K.
C'LC BY J. W. H.
C'KD BY J. D.
BASE MAP NO'S
1960
REF. MAP NO'S
AS BUILT NO'S
162-9

INTERSTATE
STATE OF CALIFORNIA
TRANSPORTATION AGENCY
DEPARTMENT OF PUBLIC WORKS
DIVISION OF HIGHWAYS
PROPOSED RELINQUISHMENT
AREA TO BE RELINQUISHED SHOWN THUS [Hatched Box]
ACCESS PROHIBITED [Dashed Line]
0 50 100 150 200