

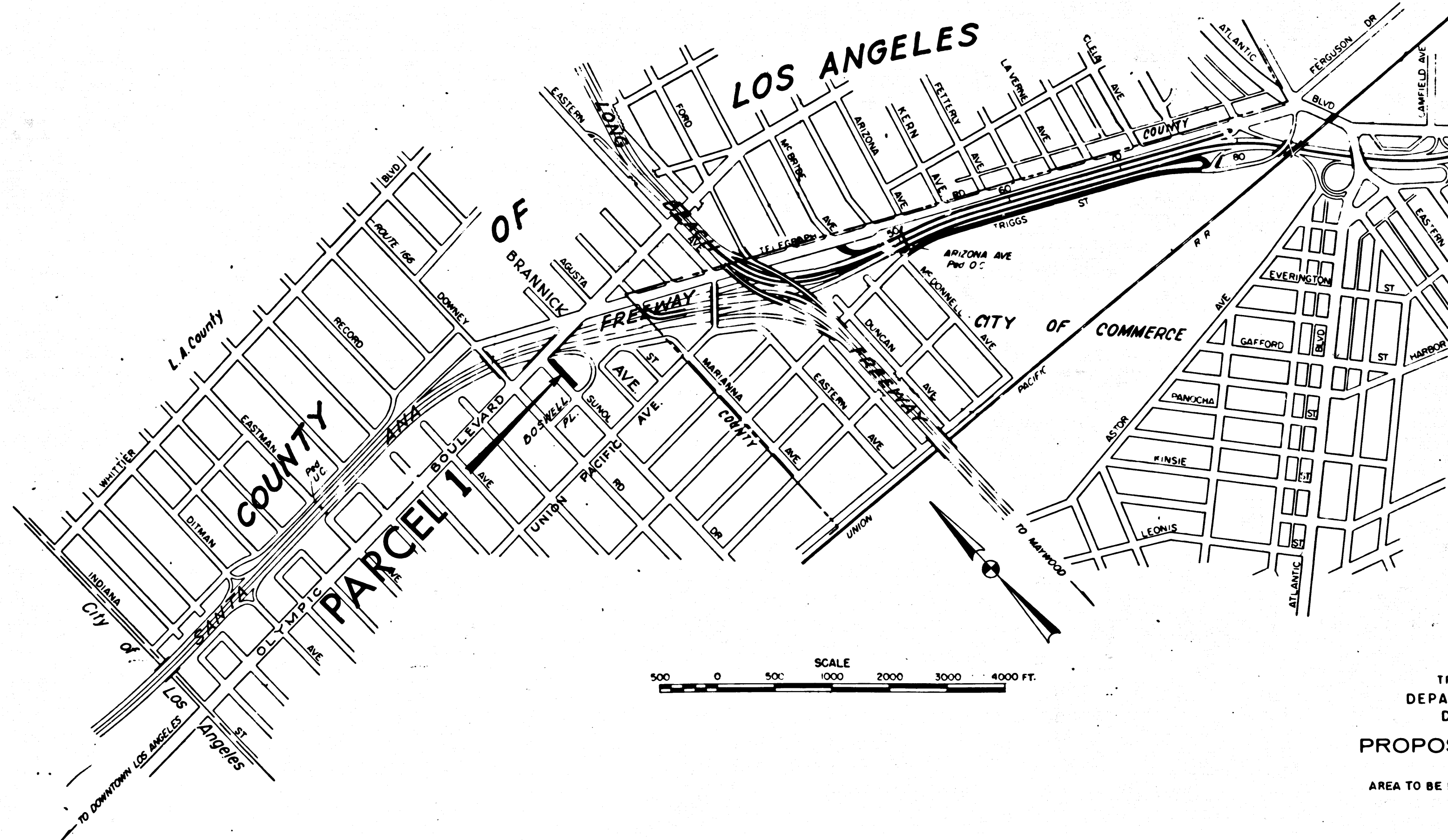
DIST	COUNTY	ROUTE	POST MILES	SHEET NO.	TOTAL SHEETS
7	LA	5	14.1/14.2	1	2

Ray E. Lee
 DEPUTY DISTRICT ENGINEER
 DATE April 6, 1966

4149
 RECORDED
 AT REQUEST OF
 DEPT. OF PUBLIC WORKS
 APR. 15, 1966
 45
 1 P.M.
 IN BOOK 4
 AT PAGE 33
 OF STATE HIGHWAY MAPS
 LOS ANGELES COUNTY, CALIF.
 RAY E. LEE
 COUNTY RECORDER
 BY *Chapman* FREE

STATE OF CALIFORNIA
 TRANSPORTATION AGENCY
 DEPARTMENT OF PUBLIC WORKS
 DIVISION OF HIGHWAYS

RIGHT OF WAY MAPS OF
STATE HIGHWAY
 SUNOL DRIVE between OLYMPIC BLVD., and UNION PACIFIC AVE.
 in the COUNTY OF LOS ANGELES



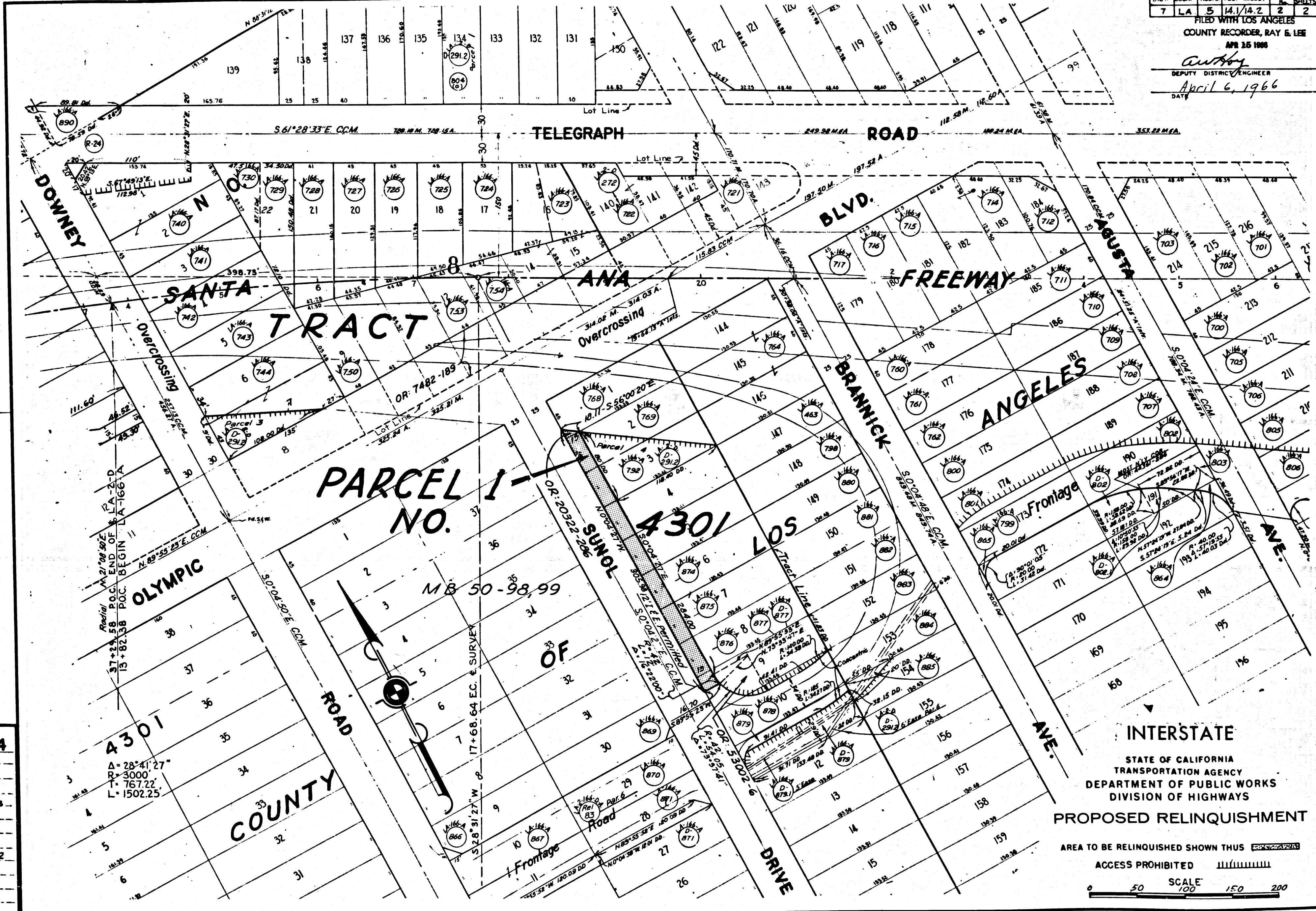
REL-514
 DRYN BY *RSD*
 C/LC BY *RSD*
 C/K'D BY *J.R.*
 BASE MAP NO'S
 REF. MAP NO'S
 AS BUILT NO'S

INTERSTATE
 STATE OF CALIFORNIA
 TRANSPORTATION AGENCY
 DEPARTMENT OF PUBLIC WORKS
 DIVISION OF HIGHWAYS
PROPOSED RELINQUISHMENT
 AREA TO BE RELINQUISHED SHOWN THUS

DIST	COUNTY	ROUTE	POST MILES	SHEET NO.	TOTAL SHEETS
7	LA	5	14.1/14.2	2	2

FILED WITH LOS ANGELES
 COUNTY RECORDER, RAY & LEE
 APR 25 1966

Anthony
 DEPUTY DISTRICT ENGINEER
 April 6, 1966
 DATE



REL-514
 DWN BY RSD
 CLC BY RSD
 CKD BY J.D.
 BASE MAP NO'S
 F2010
 REF. MAP NO'S
 CCM 193-12
 AS BUILT NO'S
 139-9

INTERSTATE
 STATE OF CALIFORNIA
 TRANSPORTATION AGENCY
 DEPARTMENT OF PUBLIC WORKS
 DIVISION OF HIGHWAYS
PROPOSED RELINQUISHMENT
 AREA TO BE RELINQUISHED SHOWN THUS [shaded area symbol]
 ACCESS PROHIBITED [hatched area symbol]
 SCALE 0 50 100 150 200