

DIST	COUNTY	ROUTE	POST MILES	SHEET NO.	TOTAL SHEETS
7	LA	7	19.40-23.28	1	7

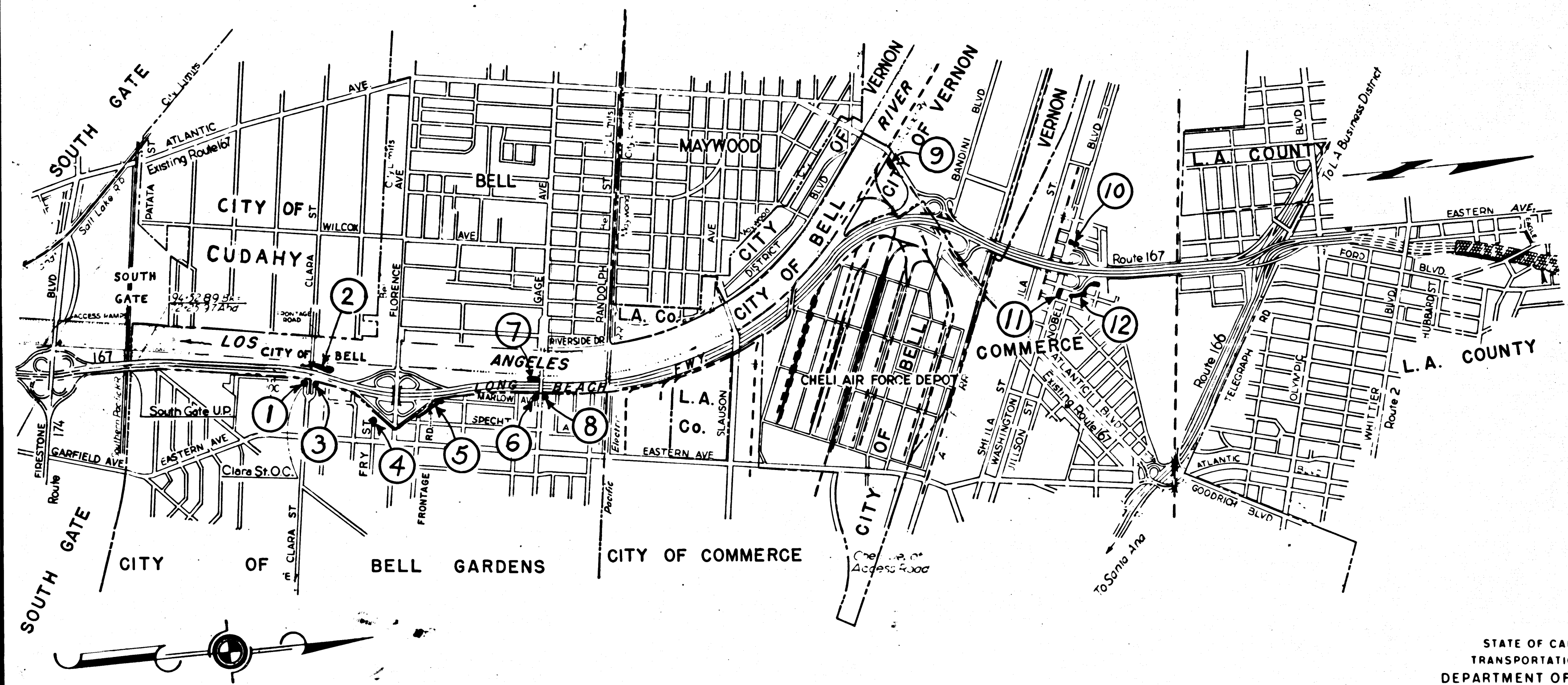
STATE OF CALIFORNIA
 TRANSPORTATION AGENCY
 DEPARTMENT OF PUBLIC WORKS
 DIVISION OF HIGHWAYS

C. W. Hoy
 DEPUTY DISTRICT ENGINEER
 DATE April 9, 1966

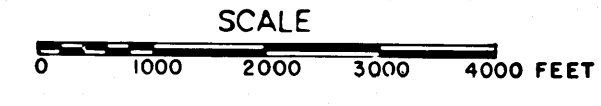
RIGHT OF WAY MAPS OF
STATE HIGHWAY

In Los Angeles County in the Cities of Bell Gardens, Bell, Commerce and Vernon between
 Firestone Blvd. and Telegraph Road

4008
 RECORDED
 AT REQUEST OF
 DEPT. OF PUBLIC WORKS
 APR. 22, 1966
 40 PM 1 P.M.
 BY *Ray E. Lee* COUNTY RECORDER
 FREE



REL- 471,472,
 489,494
 DRN BY T. K.
 C.L.C BY T. K.
 CKD BY
 BASE MAP NOS.
 P 6843
 P 6844
 F-1525
 REF. MAP NOS.
 CCM 197-7
 CCM 197-8
 CCM 197-9
 AS BUILT NO'S
 120-16/4,1
 121-9/5/8-119-5/4



STATE OF CALIFORNIA
 TRANSPORTATION AGENCY
 DEPARTMENT OF PUBLIC WORKS
 DIVISION OF HIGHWAYS
PROPOSED RELINQUISHMENT

DIST	COUNTY	ROUTE	POST MILES	SHEET NO.	TOTAL SHEETS
7	L.A.	7	19.40/23.28	2	7

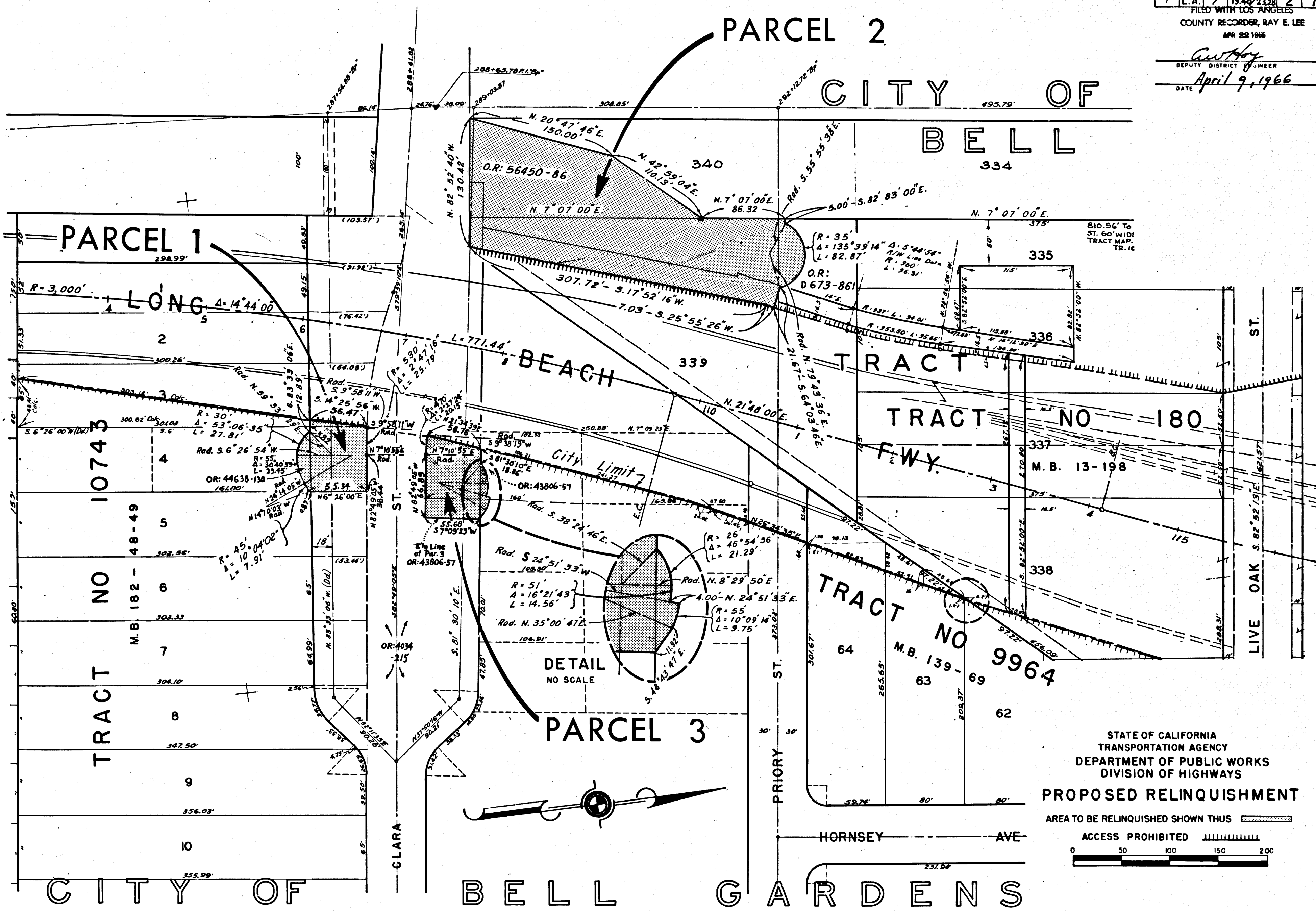
FILED WITH LOS ANGELES COUNTY RECORDER, RAY E. LEE
APR 29 1966

Anthony
DEPUTY DISTRICT ENGINEER
DATE April 9, 1966


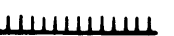
PARCEL 2

CITY OF BELL

PARCEL 1



494, 489, 471,
REL-472
DRN BY R. KCLLY
C.L.C BY J.G. B.
CR'D BY T. K.
BASE MAP NO'S
R 6843
R 6844
F-1525
REF. MAP NO'S
C.C.M. 197-7,
197-8, 197-9
AS BUILT NO'S
120-16/4,1
121-9/15,16-119-5/4

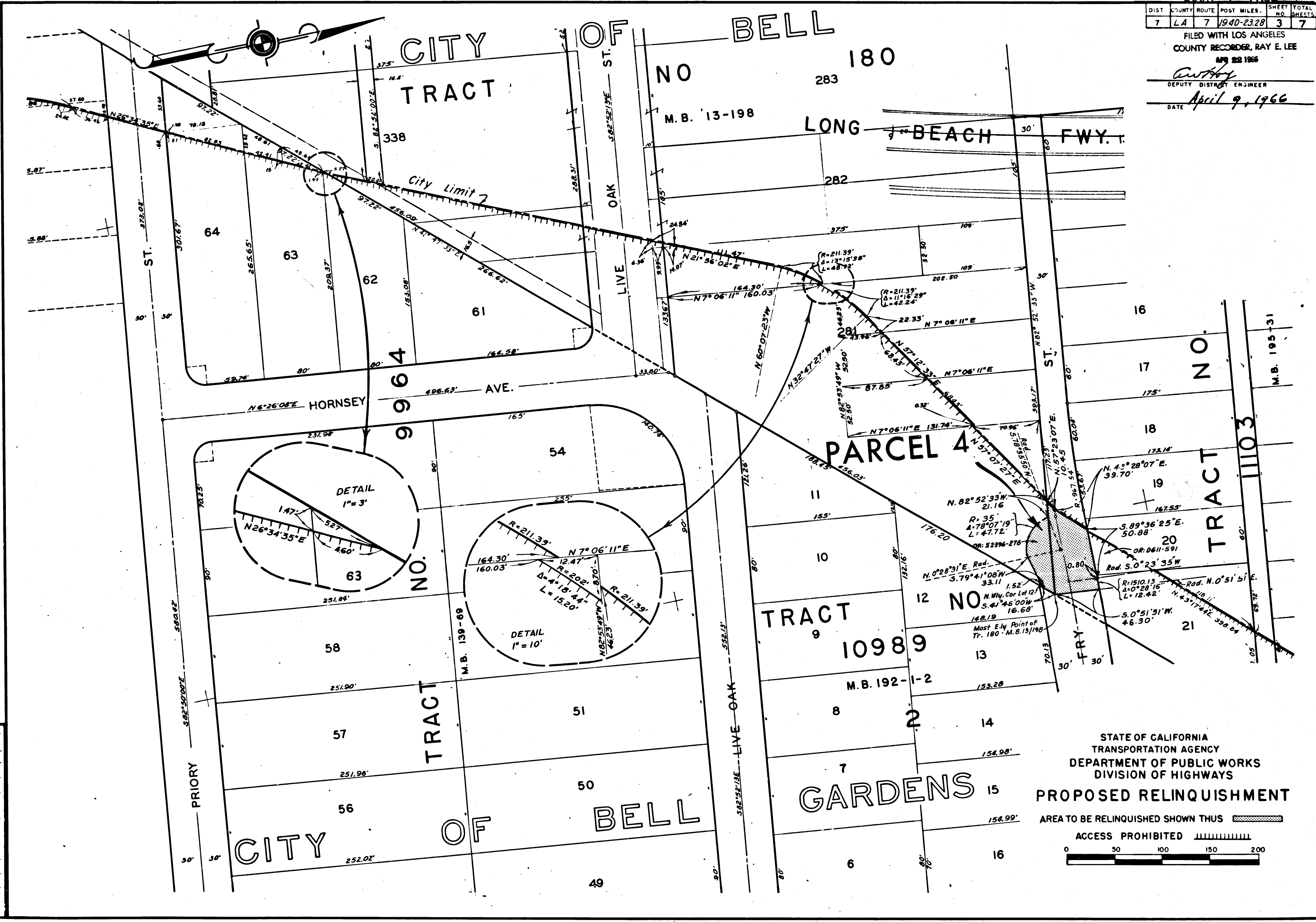
STATE OF CALIFORNIA
TRANSPORTATION AGENCY
DEPARTMENT OF PUBLIC WORKS
DIVISION OF HIGHWAYS
PROPOSED RELINQUISHMENT
AREA TO BE RELINQUISHED SHOWN THUS 
ACCESS PROHIBITED 
0 50 100 150 200

DIST	COUNTY	ROUTE	POST MILES	SHEET NO.	TOTAL SHEETS
7	LA	7	1940-23.28	3	7



FILED WITH LOS ANGELES
COUNTY RECORDER, RAY E. LEE
APR 22 1966

DEPUTY DISTRICT ENGINEER
Anthony

DATE April 9, 1966



489, 471, 494,
REL- 472
DRN BY Gary B.
C.L.C. BY J.G.B.
CK'D BY T.K.
BASE MAP NOS.
P 6843
P 6844
F-1524
REF. MAP NOS.
CCM 197-7
CCM 197-8
CCM 197-9
AS BUILT NOS.
120-16/4,
121-9/15, 16-119-5/4

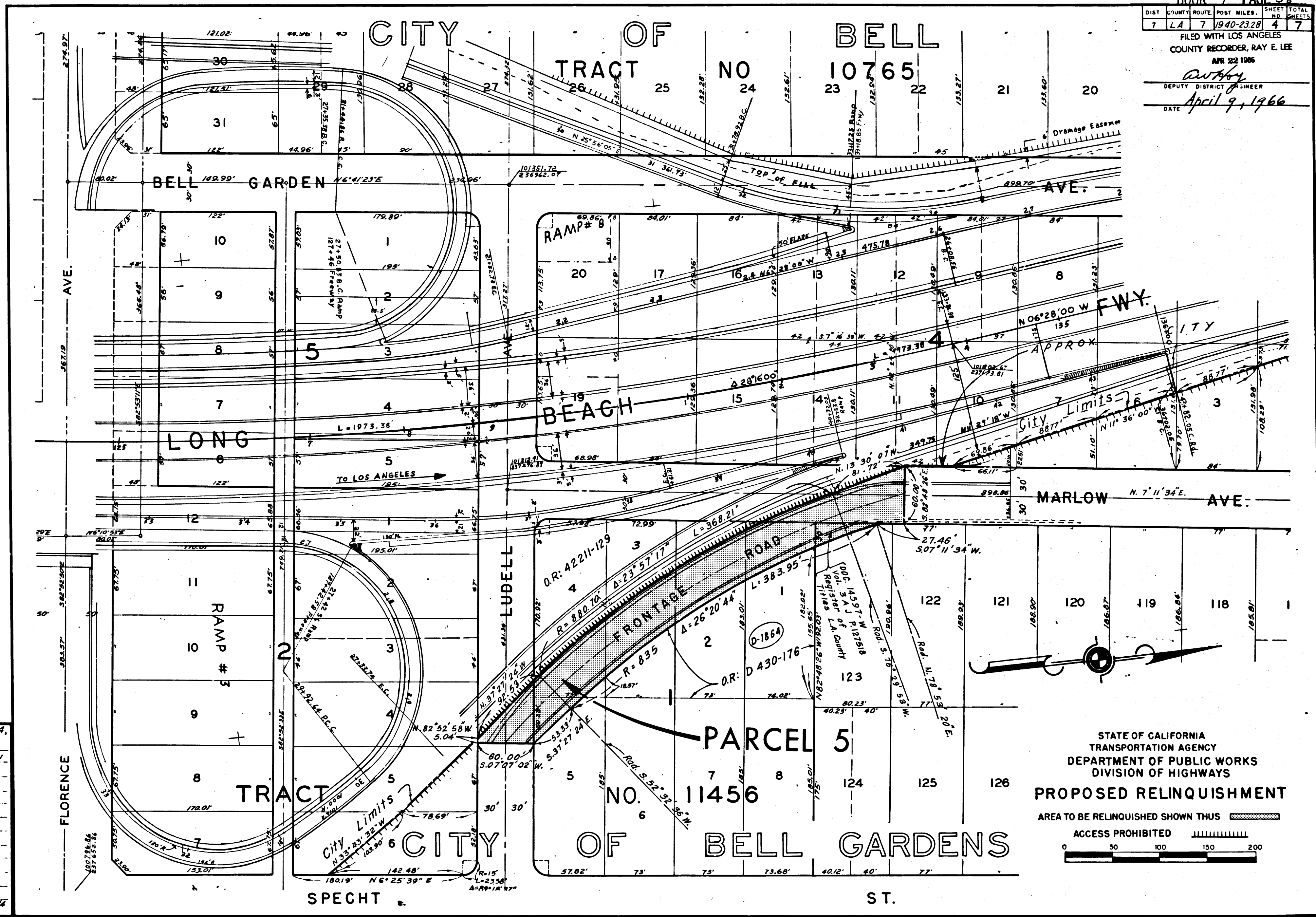
STATE OF CALIFORNIA
TRANSPORTATION AGENCY
DEPARTMENT OF PUBLIC WORKS
DIVISION OF HIGHWAYS
PROPOSED RELINQUISHMENT
AREA TO BE RELINQUISHED SHOWN THUS 
ACCESS PROHIBITED 
0 50 100 150 200

DIST	COUNTY	ROUTE	POST MILES	SHEET NO.	TOTAL SHEETS
7	LA	7	1940-23.28	4	7



FILED WITH LOS ANGELES
 COUNTY RECORDER, RAY E. LEE
 APR 22 1966

DEPUTY DISTRICT ENGINEER
Anthony

DATE April 9, 1966



489, 474, 494,
REL- 472
 DRN BY R. Kelly
 C.L.C. BY U.G.B.
 CK'D BY T. K.
 BASE MAP NOS.
 P-6843
 F-6844
 F-1525
 REF. MAP NOS.
 CCM197-7
 CCM197-8
 CCM197-9
 AS BUILT NOS.
 120-164,1
 121-9/15,16-119-5/4

STATE OF CALIFORNIA
 TRANSPORTATION AGENCY
 DEPARTMENT OF PUBLIC WORKS
 DIVISION OF HIGHWAYS
PROPOSED RELINQUISHMENT
 AREA TO BE RELINQUISHED SHOWN THUS 
 ACCESS PROHIBITED 
 0 50 100 150 200

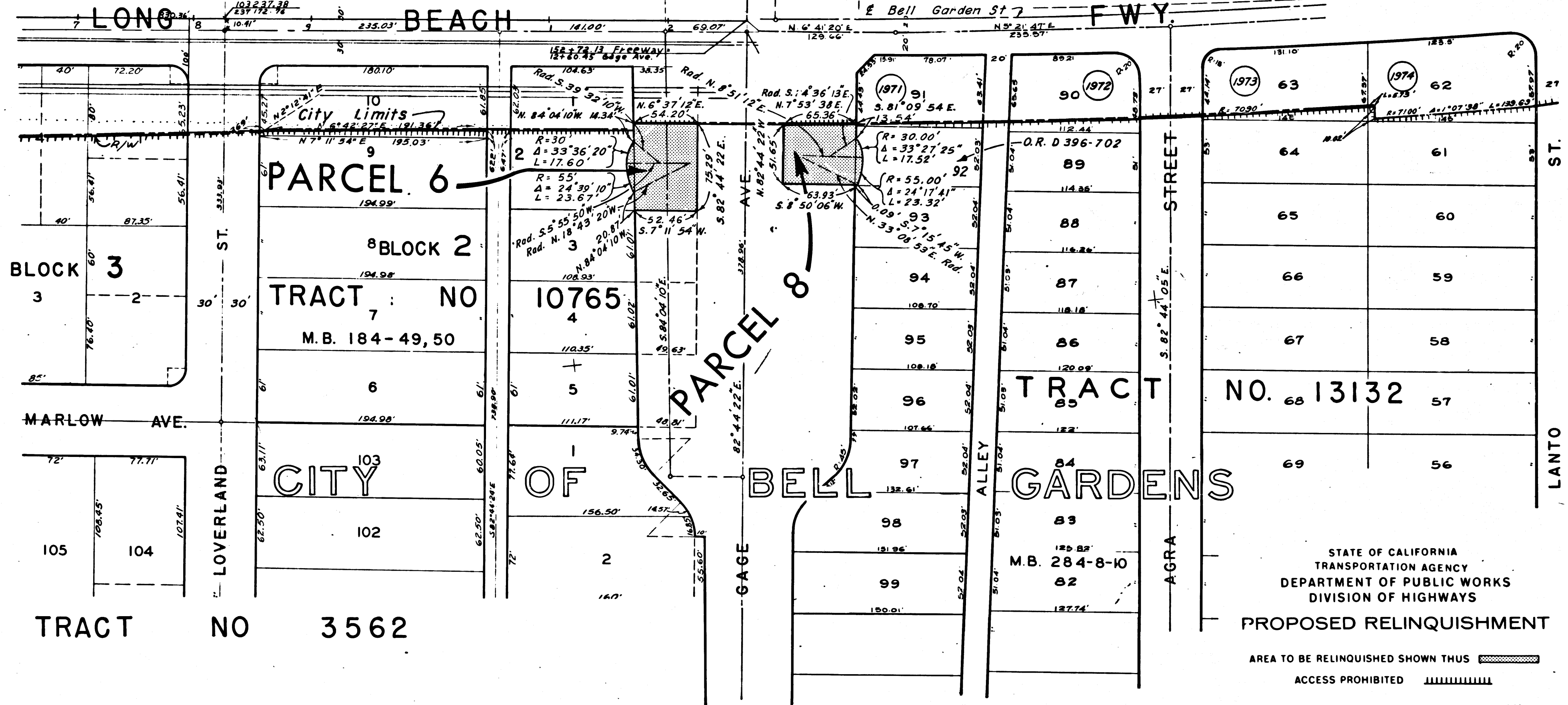
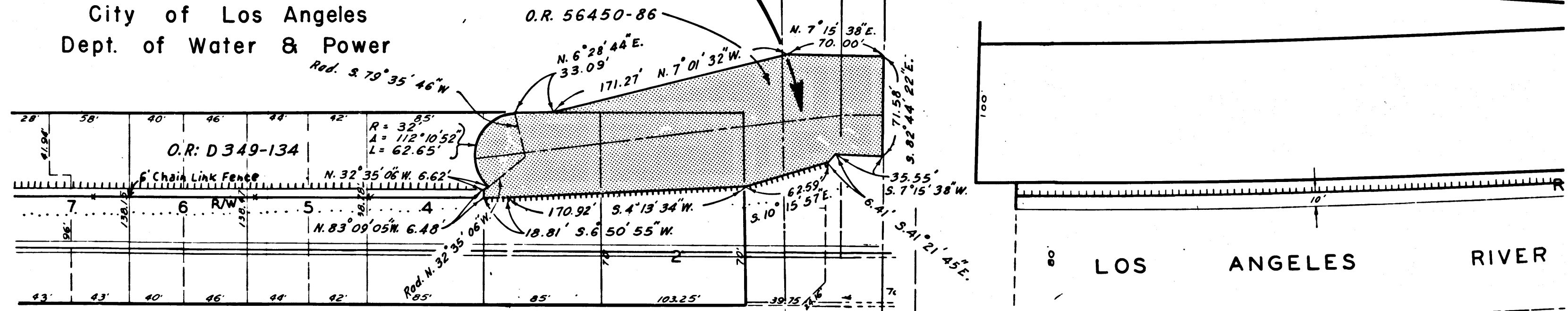
DIST	COUNTY	ROUTE	POST MILES	SHEET No.	TOTAL SHEETS
7	L.A.	7	1940-2328	5	7

FILED WITH LOS ANGELES
COUNTY RECORDER, RAY E. LEE
APR 22 1966

Anthony
DEPUTY DISTRICT ENGINEER
DATE April 9, 1966

CITY PARCEL 7 OF BELL

City of Los Angeles
Dept. of Water & Power



489, 474, 494
REL- 472
DRN BY R. K.
CLC BY J.G.B.
CXD BY T.W.K.
BASE MAP NOS
P 6843
P 6844
F-1525
REF. MAP NOS
CCM 197-7
CCM 197-8
CCM 197-9
AS BUILT NOS
120-16741
121-9/15,16-119-5/4

STATE OF CALIFORNIA
TRANSPORTATION AGENCY
DEPARTMENT OF PUBLIC WORKS
DIVISION OF HIGHWAYS
PROPOSED RELINQUISHMENT

AREA TO BE RELINQUISHED SHOWN THUS 
ACCESS PROHIBITED 

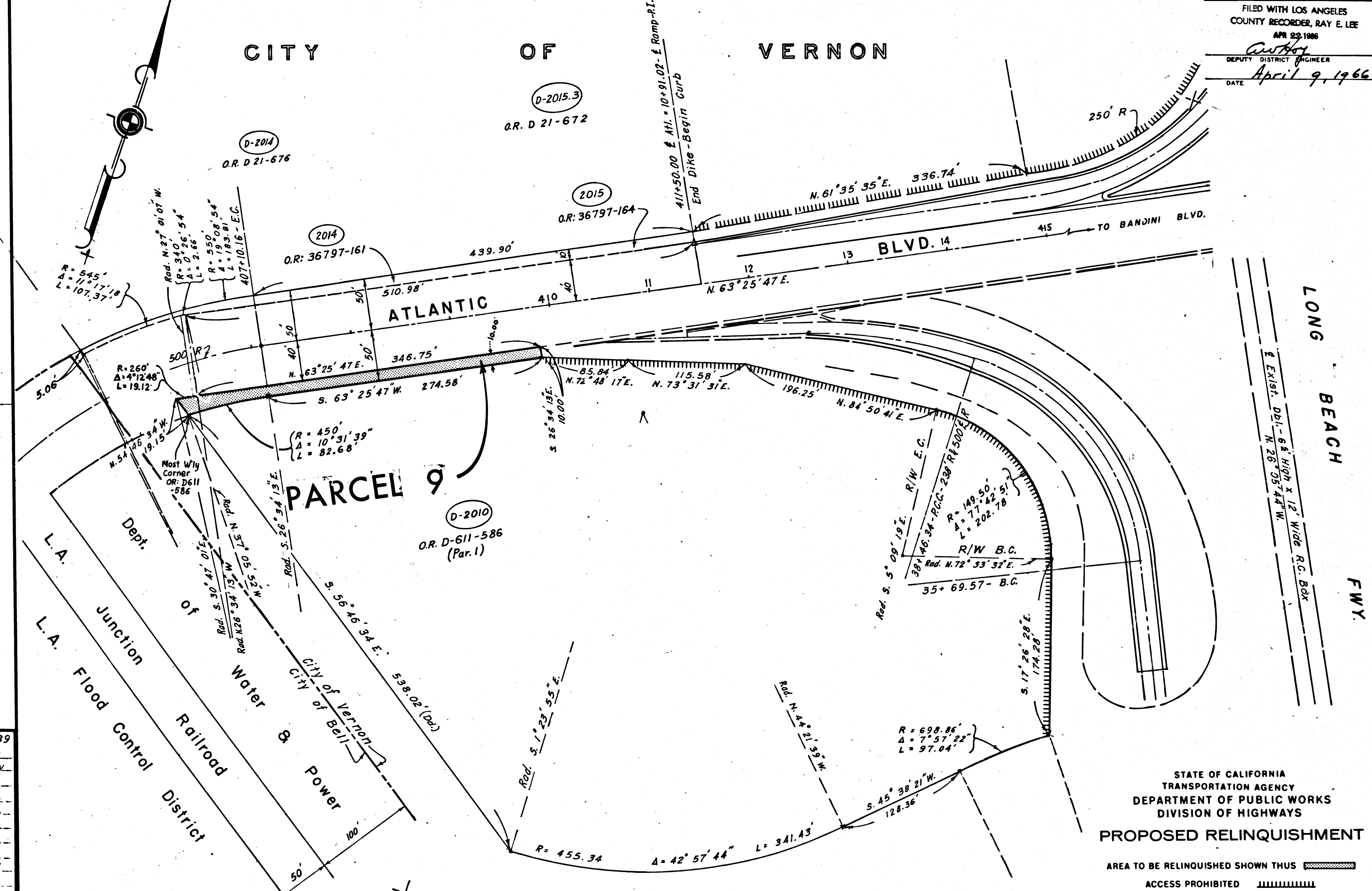


DIST.	COUNTY	ROUTE	POST MILES	SHEET No.	TOTAL SHEETS
7	L. A.	7	1940/2328	6	7

FILED WITH LOS ANGELES
COUNTY RECORDER, RAY E. LEE
APR 23 1966

DEPUTY DISTRICT ENGINEER
DATE April 9, 1966

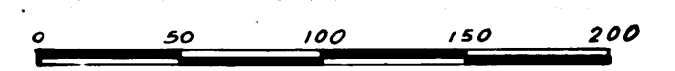
CITY OF VERNON



471,472,489
REL-494
DRN BY R. Kelly
CLC BY T. R.
CRD BY T. K.
BASE MAP NOS.
P. 6843,
P. 6844,
F-1525
REF. MAP NOS.
C.C.M. 197-7
C.C.M. 197-8
C.C.M. 197-9
AS BUILT NOS.
120-16/4.1
121-9/15,16-119-54

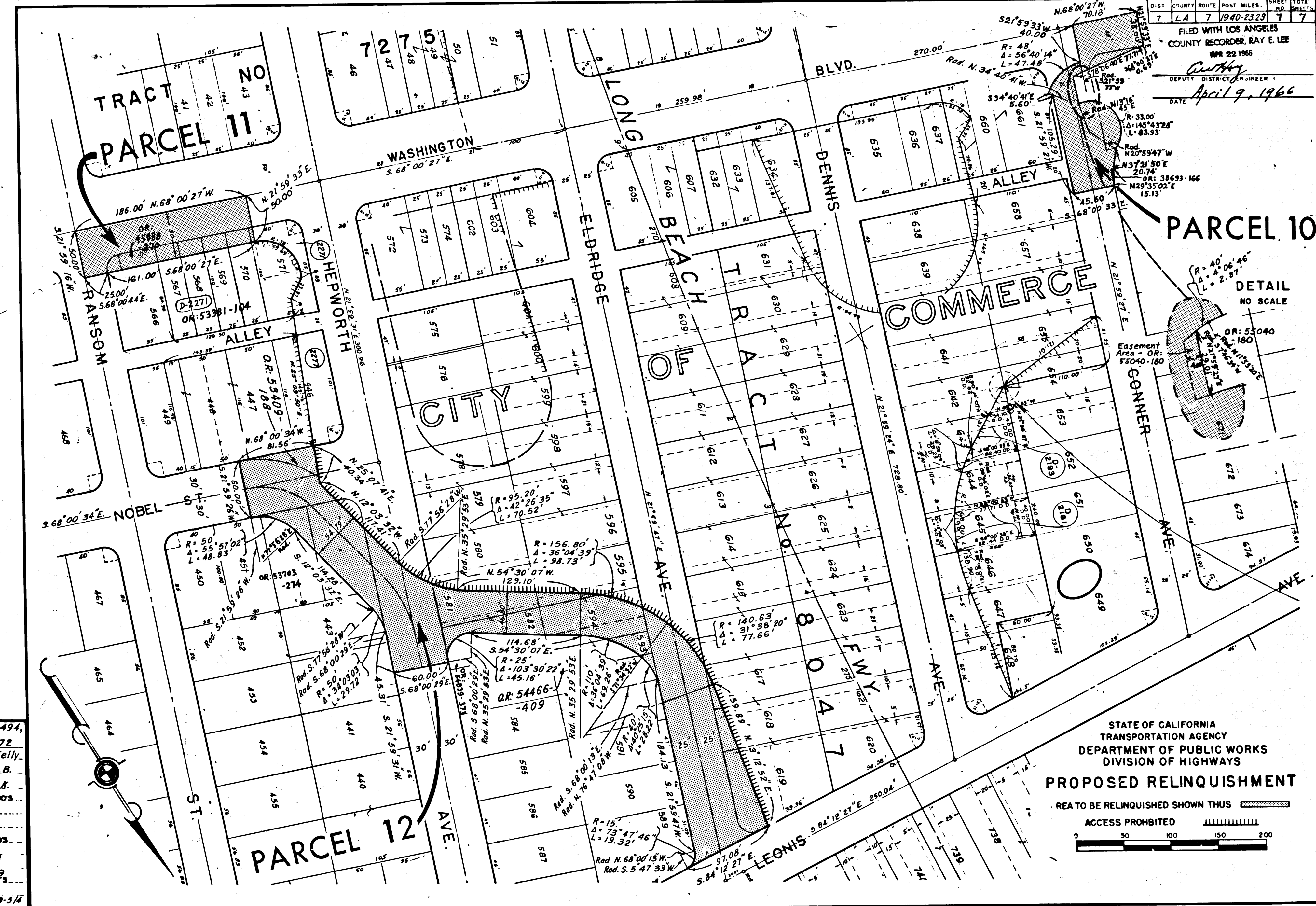
STATE OF CALIFORNIA
TRANSPORTATION AGENCY
DEPARTMENT OF PUBLIC WORKS
DIVISION OF HIGHWAYS
PROPOSED RELINQUISHMENT

AREA TO BE RELINQUISHED SHOWN THUS [Hatched Pattern]
ACCESS PROHIBITED [Dashed Line Pattern]



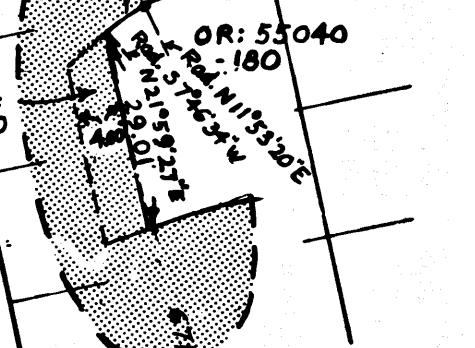
DIST	COUNTY	ROUTE	POST MILES	SHEET NO.	TOTAL SHEETS
7	LA	7	1940-2329	7	7

FILED WITH LOS ANGELES COUNTY RECORDER, RAY E. LEE
 APR 22 1966
 DEPUTY DISTRICT ENGINEER
 DATE April 9, 1966



PARCEL 10

DETAIL NO SCALE



STATE OF CALIFORNIA
 TRANSPORTATION AGENCY
 DEPARTMENT OF PUBLIC WORKS
 DIVISION OF HIGHWAYS

PROPOSED RELINQUISHMENT

AREA TO BE RELINQUISHED SHOWN THUS

ACCESS PROHIBITED



489, 471, 494,
REL- 472
 DWN BY R. Kelly
 C.L.C. BY J.G.B.
 CKD BY T.A.
 BASE MAP NOS.
 P28943
 P28844
 F-1525
 REF. MAP NOS.
 CCM197-7
 CCM197-8
 CCM197-9
 AS BUILT NOS.
 120-16/4,
 121-9/15, 16-118-5/4