

DIST.	COUNTY	ROUTE	POST MILES	SHEET NO.	TOTAL SHEETS
7	LA	57	1.5	1	2

STATE OF CALIFORNIA
 TRANSPORTATION AGENCY
 DEPARTMENT OF PUBLIC WORKS
 DIVISION OF HIGHWAYS

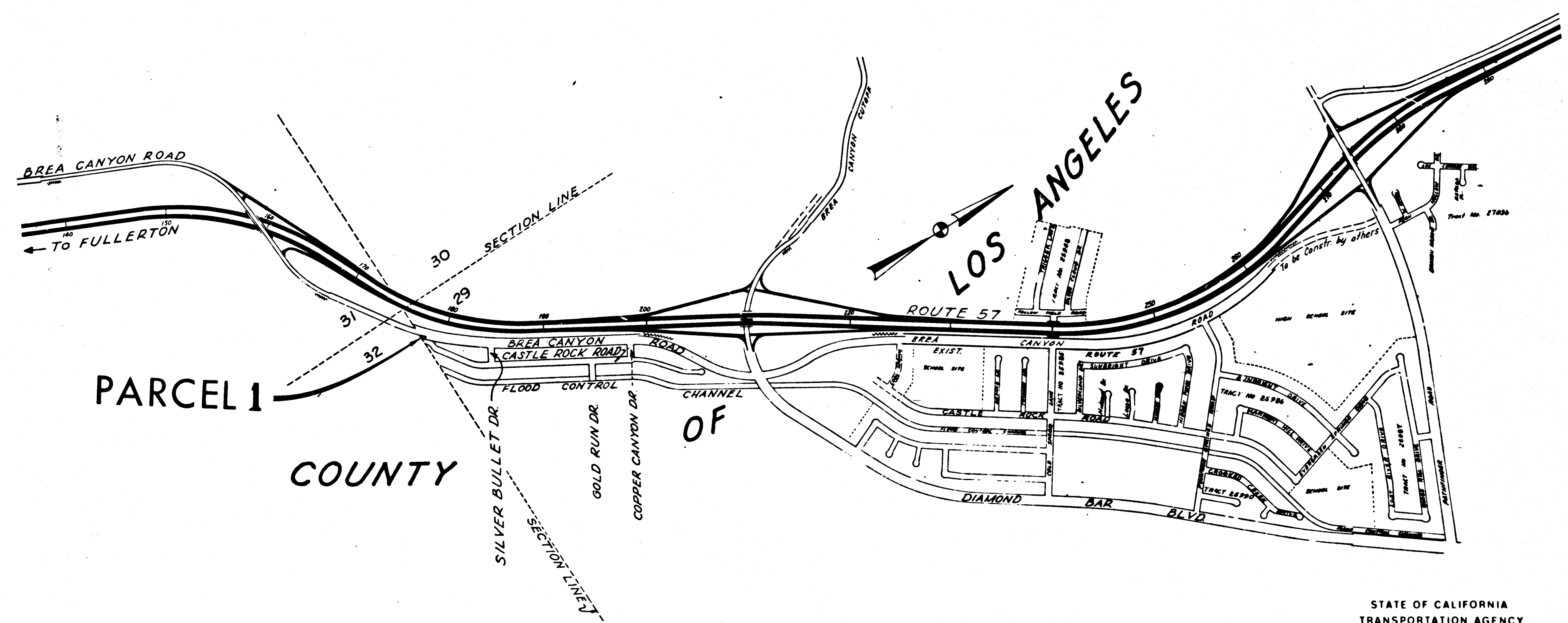
C. W. Stry
 DEPUTY DISTRICT ENGINEER
 DATE April 18, 1966

RIGHT OF WAY MAPS OF
STATE HIGHWAY

On ROUTE 57 in the COUNTY OF LOS ANGELES
 0.1 mi. south of SILVER BULLET DRIVE

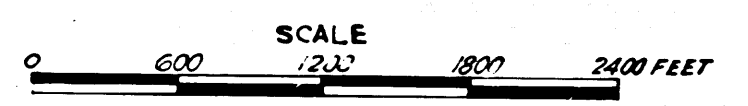
2150

RECORDED
 AT REQUEST OF
 DEPT. OF PUBLIC WORKS
 APR. 27, 1966
 1 PAST 9 A.M.
 IN BOOK 4
 AT PAGE 42
 OF STATE HIGHWAY MAPS
 LOS ANGELES COUNTY, CALIF.
 RAY E. LEE
 COUNTY RECORDER
 BY *C. W. Stry* DEPUTY



4-4
 REL-516
 DRN BY RSD
 C/LC BY RSD
 CK'D BY GDN
 BASE MAP NO'S
 F. 1672
 REF. MAP NO'S
 GCM 55, 25
 AS BUILT NO'S

STATE OF CALIFORNIA
 TRANSPORTATION AGENCY
 DEPARTMENT OF PUBLIC WORKS
 DIVISION OF HIGHWAYS
PROPOSED RELINQUISHMENT

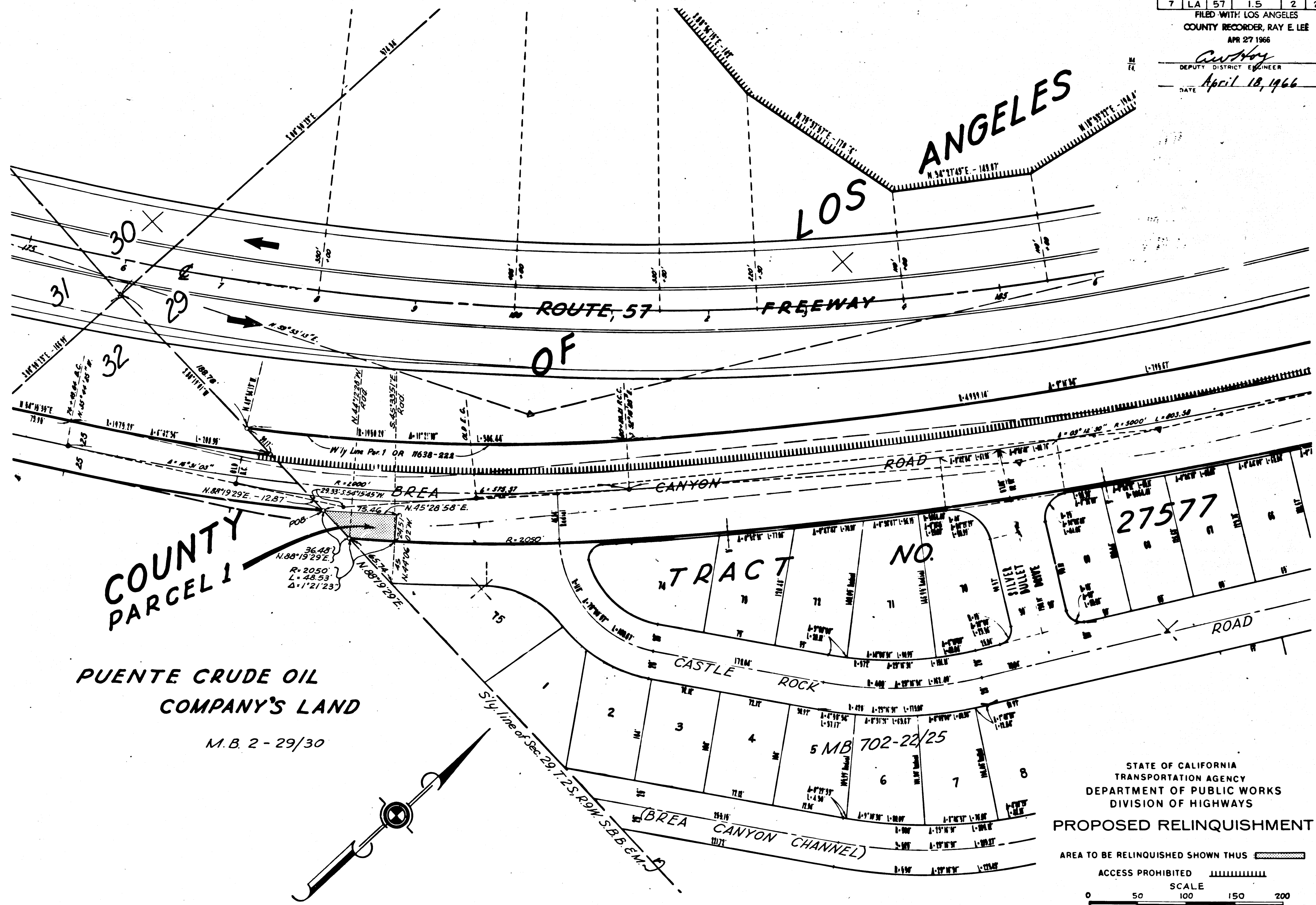


DIST	COUNTY	ROUTE	POST. MILES.	SHEET No.	TOTAL SHEETS
7	LA	57	1.5	2	2

FILED WITH LOS ANGELES
 COUNTY RECORDER, RAY E. LEE
 APR 27 1966

Curt Hoy
 DEPUTY DISTRICT ENGINEER

DATE April 18, 1966



COUNTY PARCEL 1
PUENTE CRUDE OIL COMPANY'S LAND
 M.B. 2-29/30

LOS ANGELES
ROUTE 57 FREEWAY
BREA CANYON ROAD
CASTLE ROCK
TRACT NO.
5 MB 702-22/25

STATE OF CALIFORNIA
 TRANSPORTATION AGENCY
 DEPARTMENT OF PUBLIC WORKS
 DIVISION OF HIGHWAYS
PROPOSED RELINQUISHMENT
 AREA TO BE RELINQUISHED SHOWN THUS [Hatched Box]
 ACCESS PROHIBITED [Hatched Box]
 SCALE
 0 50 100 150 200

REL-516
 DRYN BY RSD
 C/LC BY RSD
 CK'D BY GDIY
 BASE MAP NO'S
 F1672
 REF. MAP NO'S
 CCM 55.25
 AS BUILT NO'S

4-43