

DIST	COUNTY	ROUTE	POST MILES	SHEET NO.	TOTAL SHEETS
7	LA	101	31.8-32.9	1	5

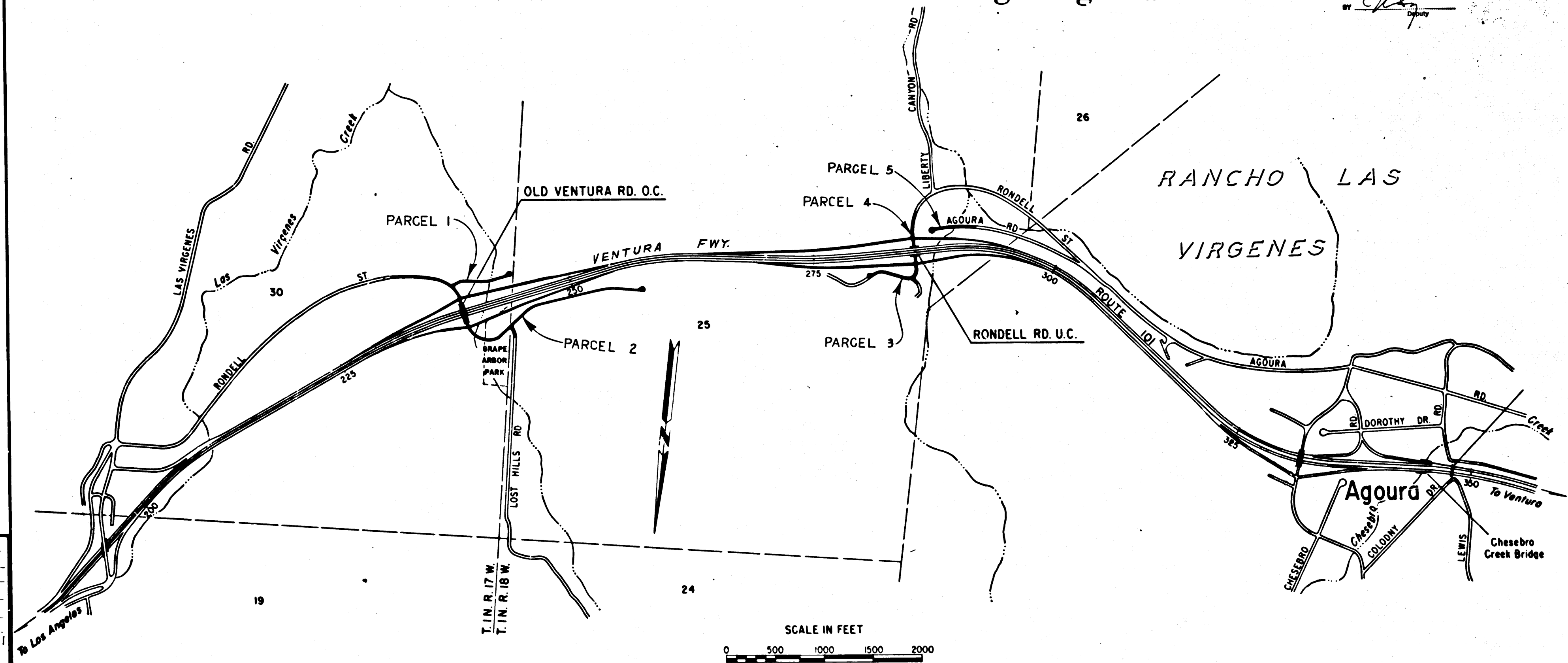
STATE OF CALIFORNIA
 TRANSPORTATION AGENCY
 DEPARTMENT OF PUBLIC WORKS
 DIVISION OF HIGHWAYS

awhoy
 DEPUTY DISTRICT ENGINEER
 DATE *April 18, 1966*

RIGHT OF WAY MAPS OF
STATE HIGHWAY
 In Los Angeles County between 0.3 mile west of Las Virgenes Road and
 0.4 mile southeast of Chesebro Road Overcrossing in Agoura

2151

RECORDED
 AT REQUEST OF
 DEPT. OF PUBLIC WORKS
APR. 27, 1966
11:01 AM
 BY *RAY E. LEE*
 COUNTY RECORDER
 FREE



REL-437
 DRN BY *R.C.*
 CLC BY *M.M.*
 CK'D BY *gaw*
 BASE MAP NO'S
 F-2217, F-2217.1
 REF. MAP NO'S
 AS BUILT NO'S
 160-12

PROPOSED RELINQUISHMENT

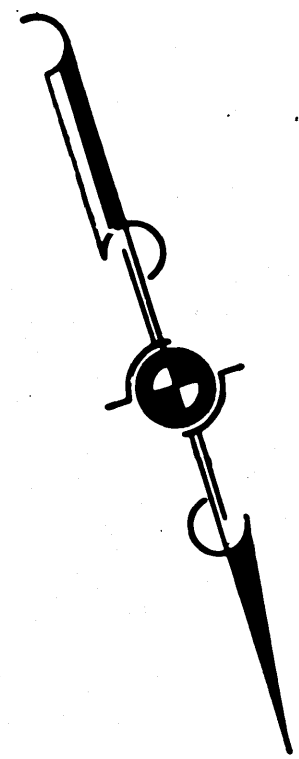
DIST.	COUNTY	ROUTE	POST MILES.	SHEET NO.	TOTAL SHEETS
7	LA	101	31.8 - 32.9	2	5

FILED WITH LOS ANGELES COUNTY RECORDER, RAY E. LEE
APR 27 1966

Anthony
DEPUTY DISTRICT ENGINEER
DATE April 18, 1966

T1N R.17W; S.B.B.&M.

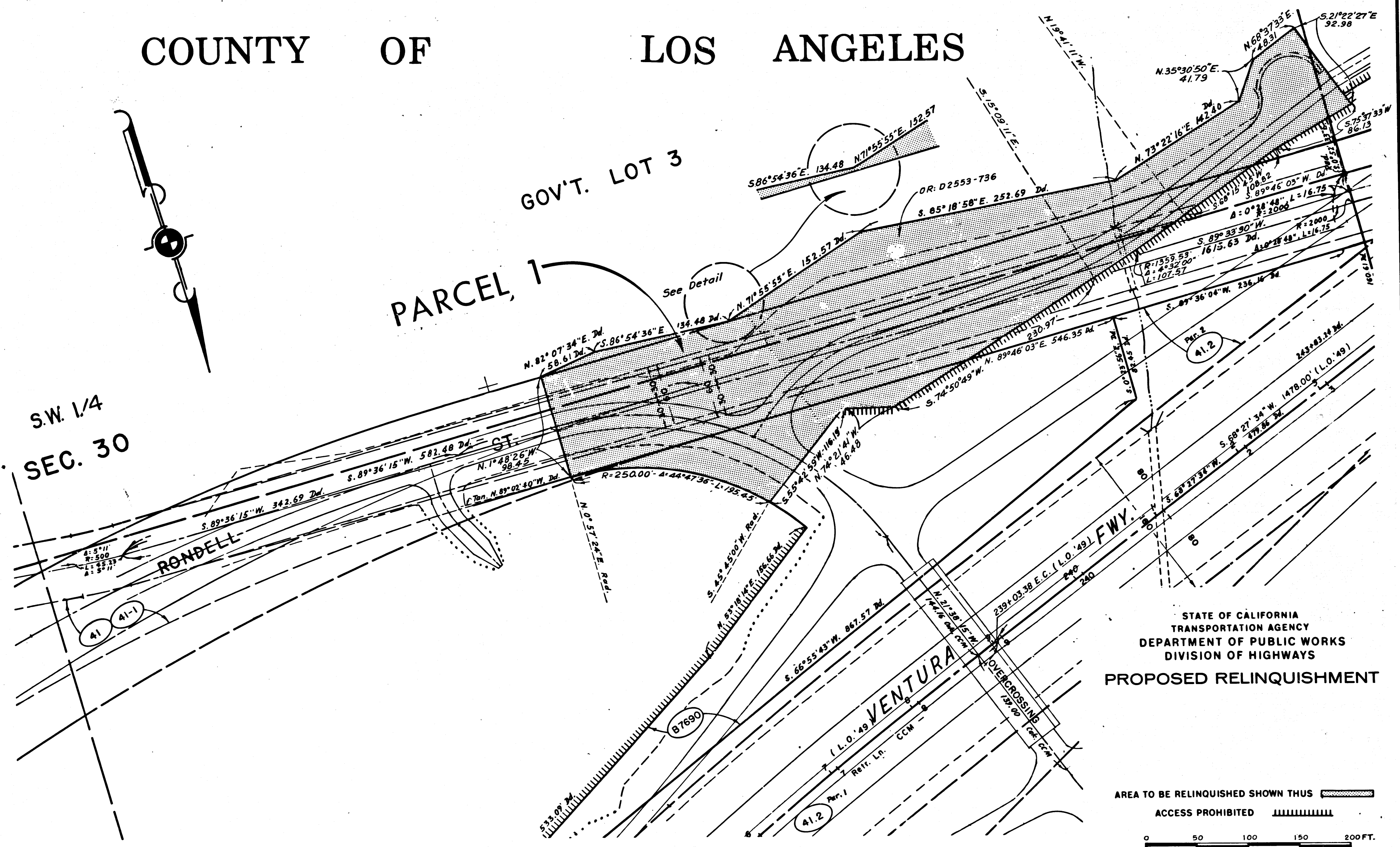
COUNTY OF LOS ANGELES



S.W. 1/4
SEC. 30

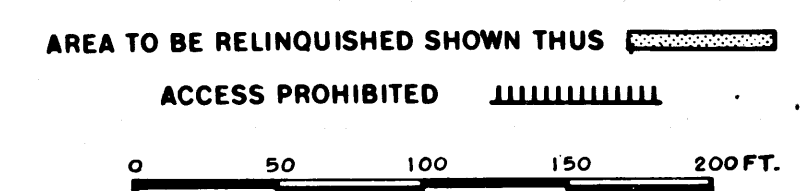
GOV'T. LOT 3

PARCEL 1



REL-437
DRN BY R.C.
C/LC BY M.M.
CHKD BY *gls*
BASE MAP NOS.
F-2217, F-2217J
REF. MAP NOS.
AS BUILT NOS.
160-12

STATE OF CALIFORNIA
TRANSPORTATION AGENCY
DEPARTMENT OF PUBLIC WORKS
DIVISION OF HIGHWAYS
PROPOSED RELINQUISHMENT



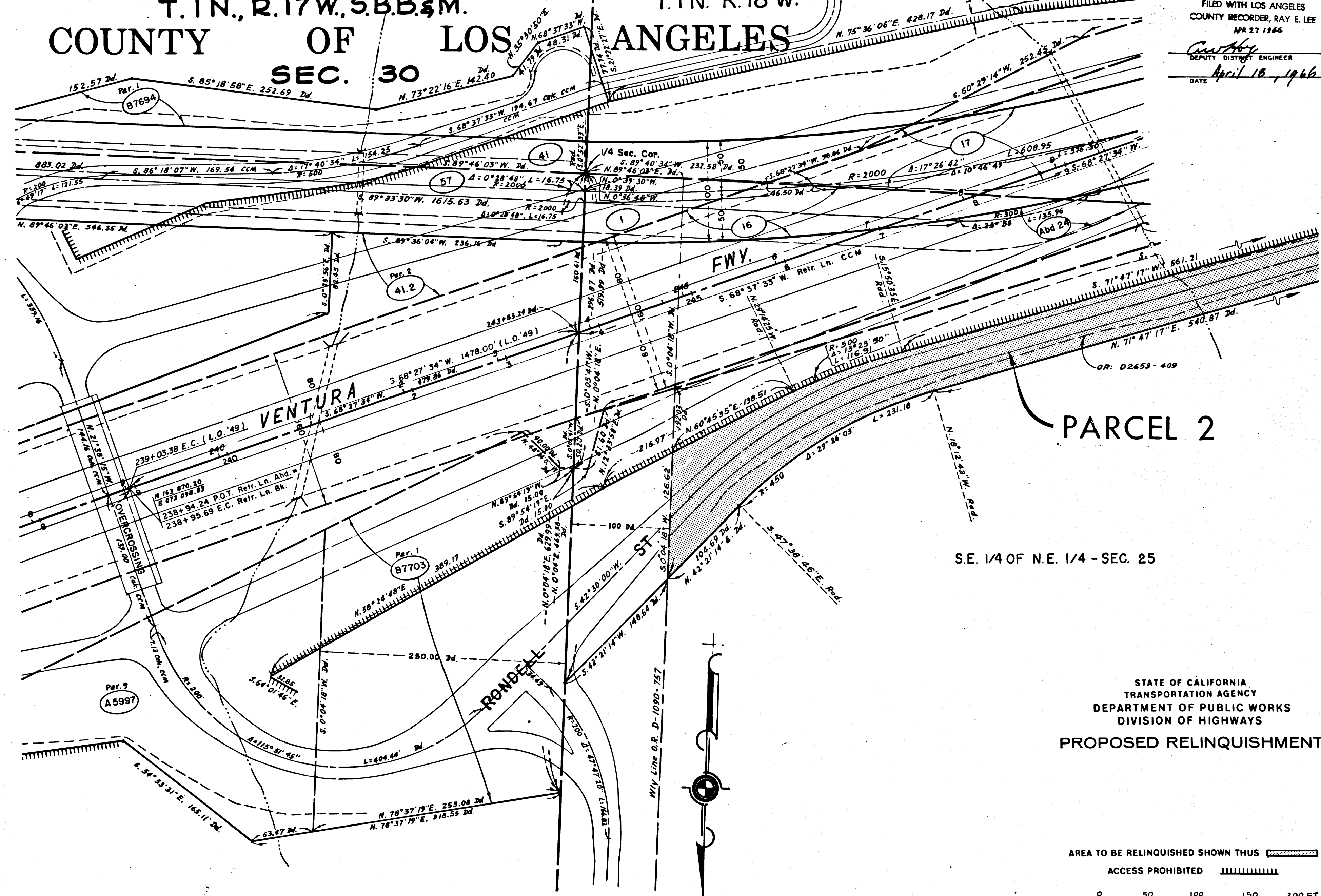
T. 1 N., R. 17 W., S. B. B. & M.
 COUNTY OF LOS ANGELES
 SEC. 30

T. 1 N. R. 18 W.

DIST.	COUNTY	ROUTE	POST MILES.	SHEET No.	TOTAL SHEETS
7	LA	101	31.8-32.9	3	5

FILED WITH LOS ANGELES
 COUNTY RECORDER, RAY E. LEE
 APR 27 1966

DEPUTY DISTRICT ENGINEER
 DATE April 18, 1966



PARCEL 2

SE. 1/4 OF N.E. 1/4 - SEC. 25

STATE OF CALIFORNIA
 TRANSPORTATION AGENCY
 DEPARTMENT OF PUBLIC WORKS
 DIVISION OF HIGHWAYS
 PROPOSED RELINQUISHMENT

AREA TO BE RELINQUISHED SHOWN THUS [Dashed Line]

ACCESS PROHIBITED [Hatched Area]

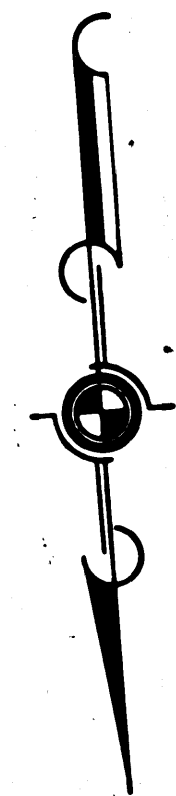
0 50 100 150 200 FT.

REL-437
 DWN BY R.C.
 C/LC BY M.M.
 CKD BY [Signature]
 BASE MAP NOS. F-2217, F-2217
 REF. MAP NOS.
 AS BUILT NOS. 160-12

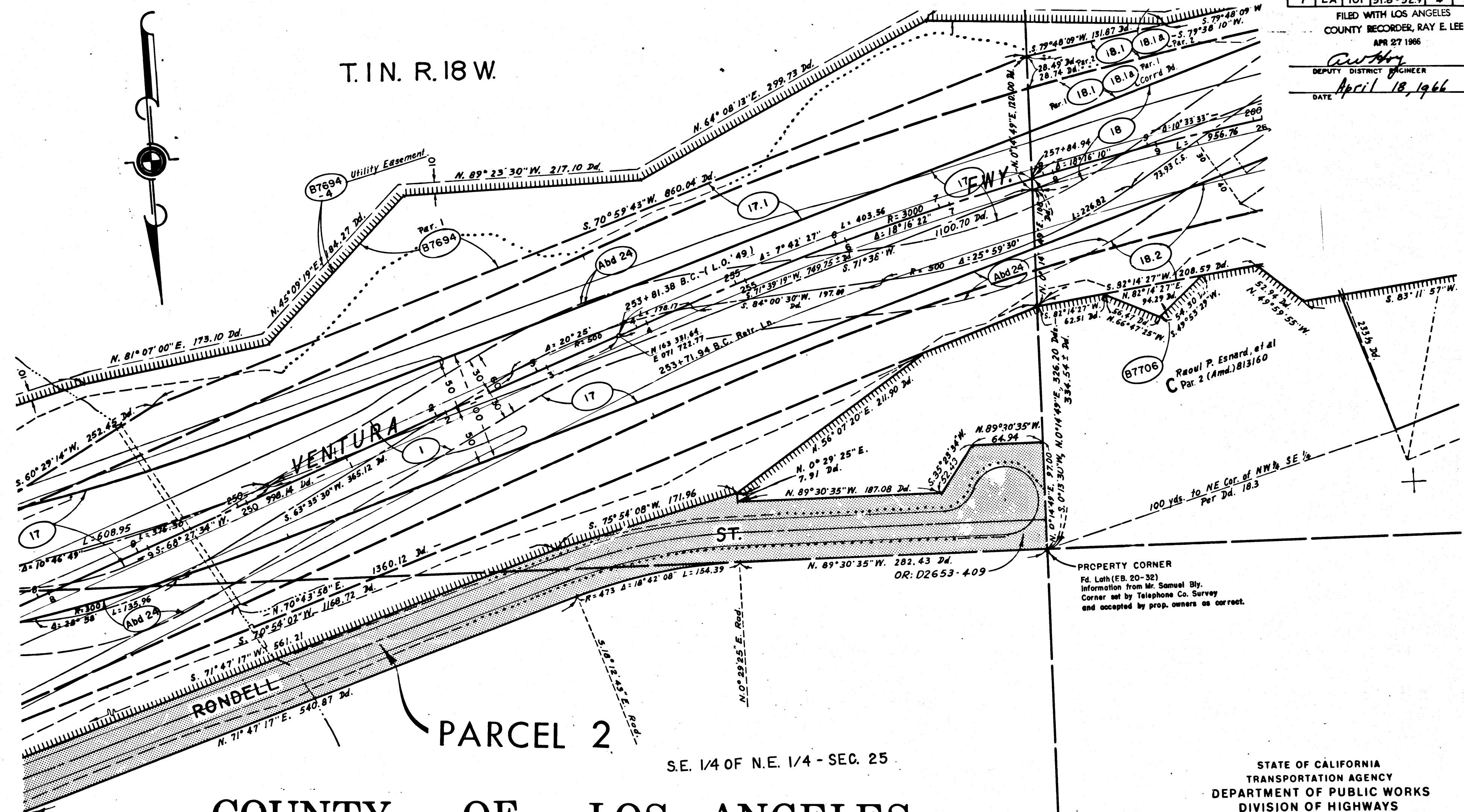
DIST.	COUNTY	ROUTE	POST MILES	SHEET No.	TOTAL SHEETS
7	LA	101	31.8-32.9	4	5

FILED WITH LOS ANGELES
COUNTY RECORDER, RAY E. LEE
APR 27 1966

R. W. Harty
DEPUTY DISTRICT ENGINEER
DATE April 18, 1966



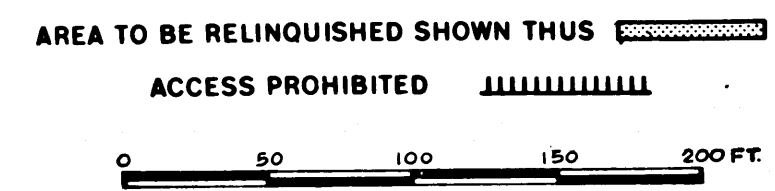
T. 1 N. R. 18 W.



COUNTY OF LOS ANGELES

REL-437
DWN BY R.C.
C/LC BY M.M.
CWD BY J.W.
BASE MAP NO'S
F-2217, F-2217.1
REF. MAP NO'S
AS BUILT NO'S
160-12

STATE OF CALIFORNIA
TRANSPORTATION AGENCY
DEPARTMENT OF PUBLIC WORKS
DIVISION OF HIGHWAYS
PROPOSED RELINQUISHMENT



DIST.	COUNTY	ROUTE	POST MILES.	SHEET TOTAL
7	LA	101	31.8-32.9	5 5

FILED WITH LOS ANGELES COUNTY RECORDER, RAY E. LEE
APR 27 1966

DEPUTY DISTRICT ENGINEER

DATE April 18, 1966

T. 1 N. R. 18 W.; S.B.B. & M.

COUNTY OF LOS ANGELES
PARCEL 4 PARCEL 5

TRACT NO. 11161
LOT 3
M/B 197-12

NE. 1/4 OF SW. 1/4-SEC. 25

AGOURA RD.
R=2000
R=1990

M. B. 197-12

LOT 4

LOT 5

VENTURA

VENTURA

PORTION

GOV. LOT 3

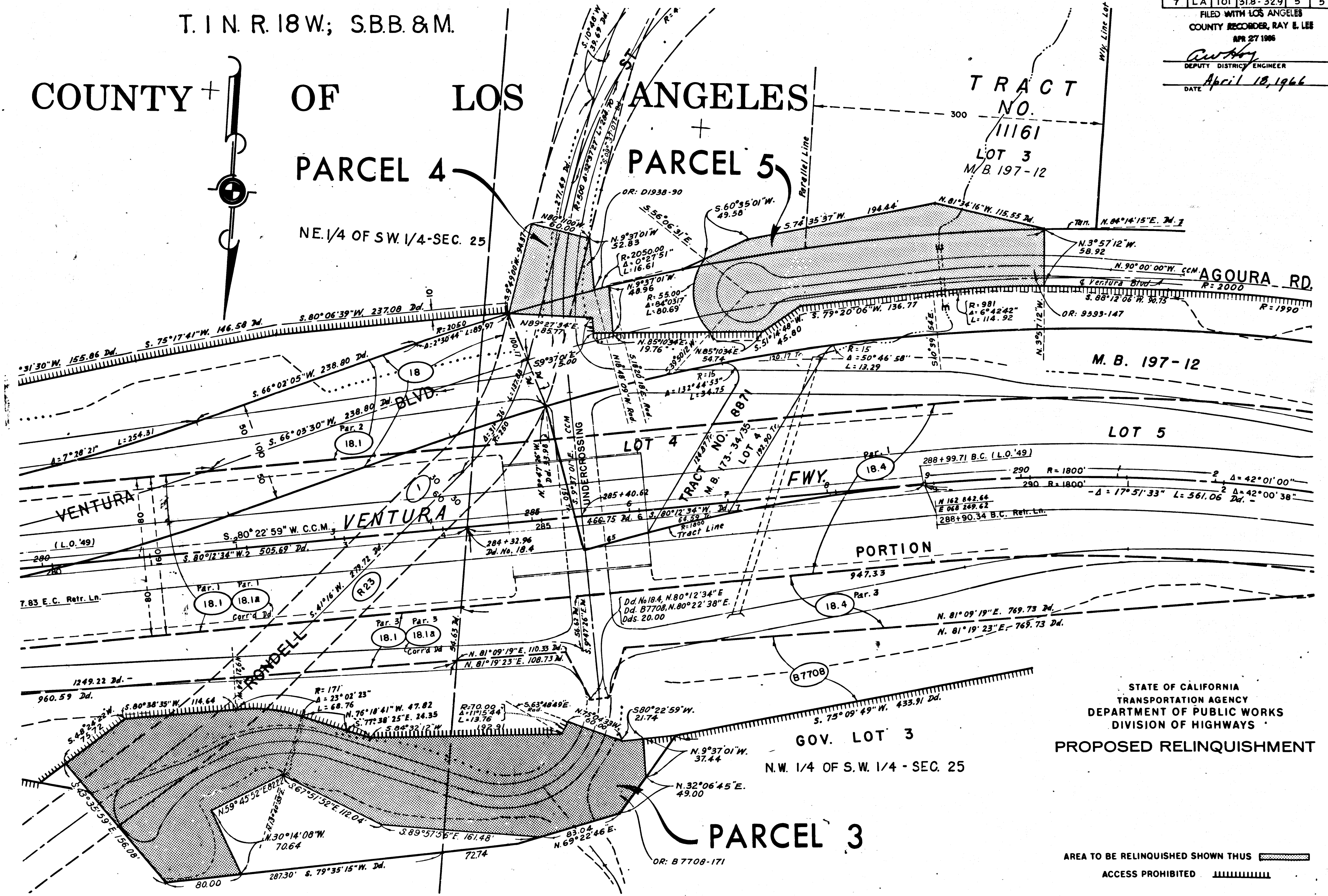
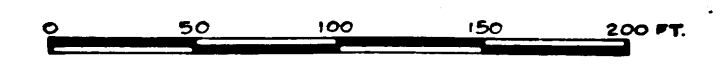
N.W. 1/4 OF S.W. 1/4 - SEC. 25

PARCEL 3

STATE OF CALIFORNIA
TRANSPORTATION AGENCY
DEPARTMENT OF PUBLIC WORKS
DIVISION OF HIGHWAYS

PROPOSED RELINQUISHMENT

AREA TO BE RELINQUISHED SHOWN THUS [Hatched Box]
ACCESS PROHIBITED [Dashed Line]



Revised 9-22-66

REL-437
DRN BY R.C.
C.L.C. BY M.M.
CKD BY J.S.
BASE MAP NO'S
F-2217, F-2217
REF. MAP NO'S
AS BUILT NO'S
160-12