

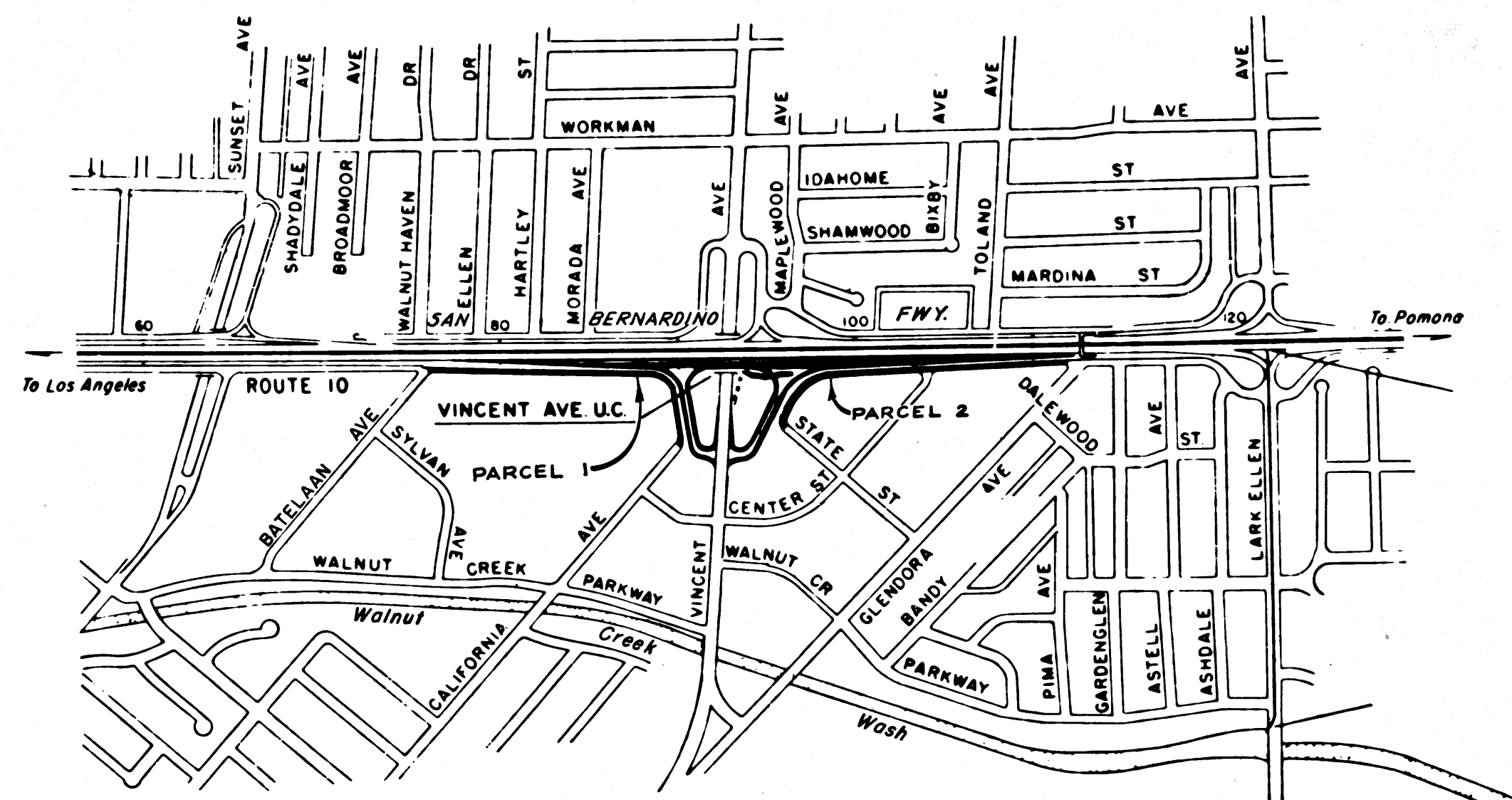
DIST.	COUNTY	ROUTE	POST M. ES.	SHEET No.	TOTAL SHEETS
07	L.A.	10	35.1/35.8	1	5

C. H. Hoyle
 DEPUTY DISTRICT ENGINEER
 DATE April 25, 1966

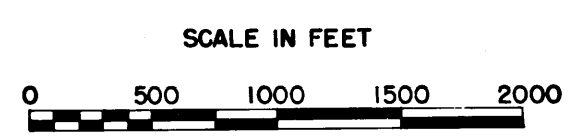
STATE OF CALIFORNIA
 TRANSPORTATION AGENCY
 DEPARTMENT OF PUBLIC WORKS
 DIVISION OF HIGHWAYS
 RIGHT OF WAY MAPS OF
STATE HIGHWAY

In Los Angeles County in West Covina between
 Batelaan Ave. to Glendora Ave.

2147
 RECORDED
 AT REQUEST OF
 DEPT. OF PUBLIC WORKS
 MAY 2, 1966
 39 PM 8 AM.
 IN BOOK 4
 AT PAGE 49
 OF STATE HIGHWAY MAPS
 LOS ANGELES COUNTY, CALIF.
 RAY E. LEE
 COUNTY RECORDER
 BY *[Signature]* **FREE**



WEST COVINA



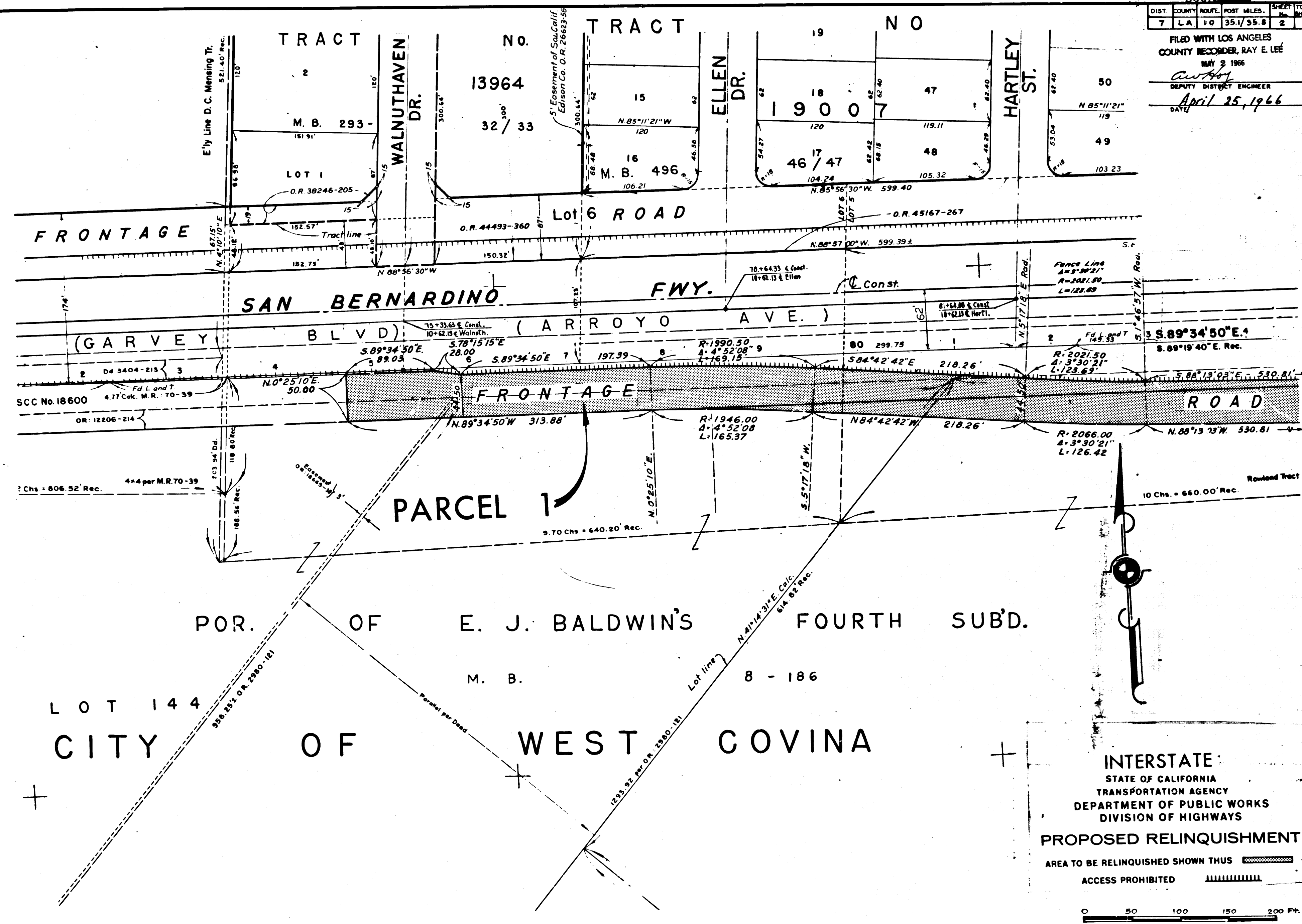
INTERSTATE
 PROPOSED RELINQUISHMENT

REL-498
 DWTN BY R.C.
 C'LC BY M.M.
 CK'D BY T.W.K.
 BASE MAP NO'S
F-1863
 REF. MAP NO'S
C.C.M. 72.3
72.4
 AS BUILT NO'S
160-4

839
 449.52

DIST.	COUNTY	ROUTE	POST MILES	SHEET NO.	TOTAL SHEETS
7	LA	10	35.1/35.8	2	5

FILED WITH LOS ANGELES COUNTY RECORDER, RAY E. LEE
MAY 2 1966
Deputy District Engineer
April 25, 1966
DATE



SCC No. 18600
OR: 12206-214

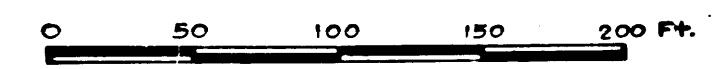
LOT 144
CITY

PARCEL 1

POR. OF E. J. BALDWIN'S FOURTH SUB'D.

M. B. 8 - 186
WEST COVINA

INTERSTATE
STATE OF CALIFORNIA
TRANSPORTATION AGENCY
DEPARTMENT OF PUBLIC WORKS
DIVISION OF HIGHWAYS
PROPOSED RELINQUISHMENT
AREA TO BE RELINQUISHED SHOWN THUS [Hatched Box]
ACCESS PROHIBITED [Hatched Box]



REL-498
DWN BY R.C.
CLC BY M.M.
CHKD BY T.W.K.
BASE MAP NOS. F-1863
REF. MAP NOS. C.C.M. 72.3 C.C.M. 72.4
AS BUILT NOS. 160.4

See Sheet 3

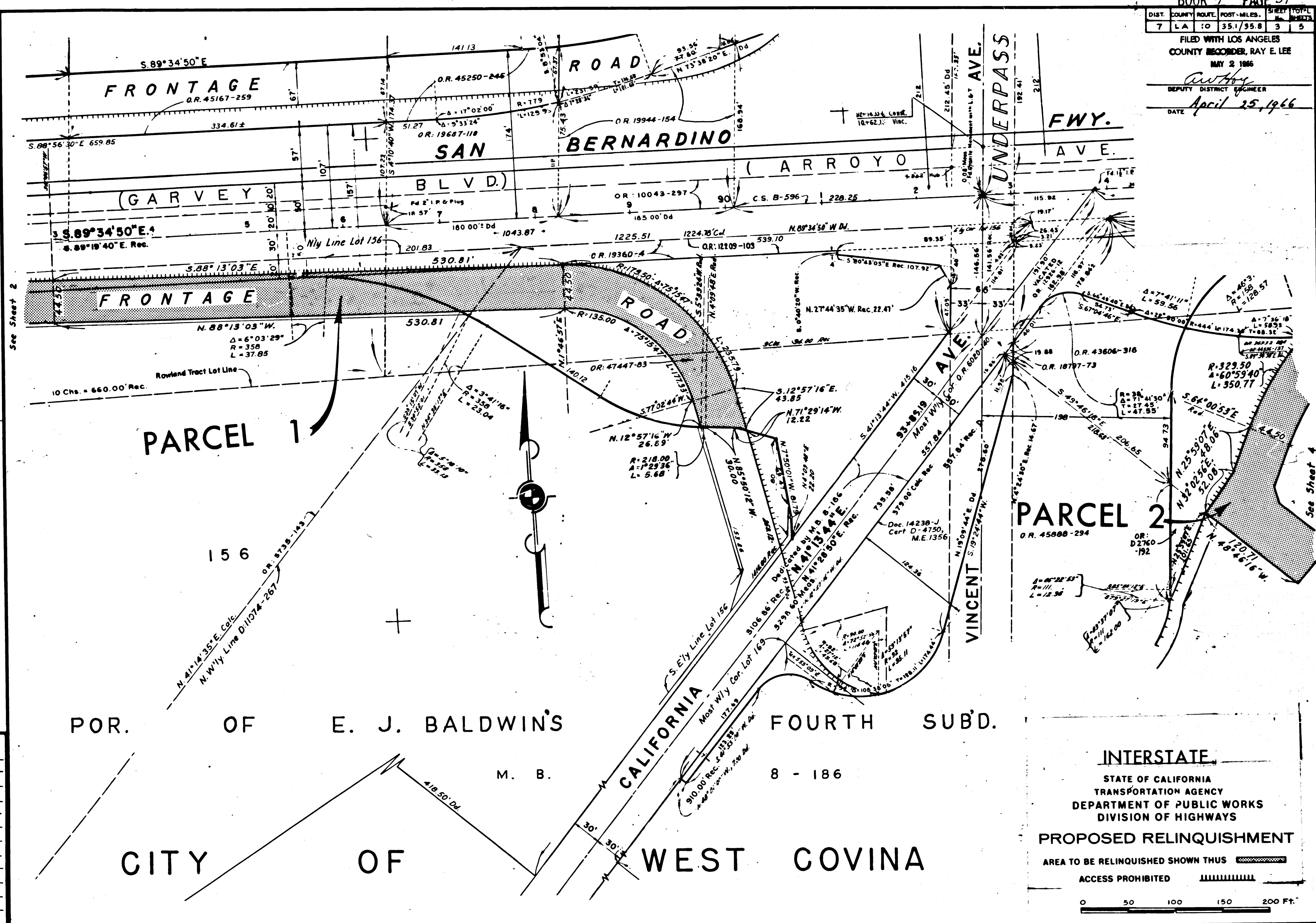
107M 957

DIST.	COUNTY	ROUTE	POST-MILES.	SHEET TOTAL
7	LA	10	35.1/95.8	3 5



FILED WITH LOS ANGELES
COUNTY RECORDER, RAY E. LEE
MAY 2 1966

DEPUTY DISTRICT ENGINEER

DATE April 25, 1966



REL-498
DWN BY R.C.
C/LC BY M.M.
CWD BY T.W.K.
BASE MAP NOS.
F-1863
REF. MAP NOS.
C.C.M. 72.3
C.C.M. 72.4
AS BUILT NOS.
160-4

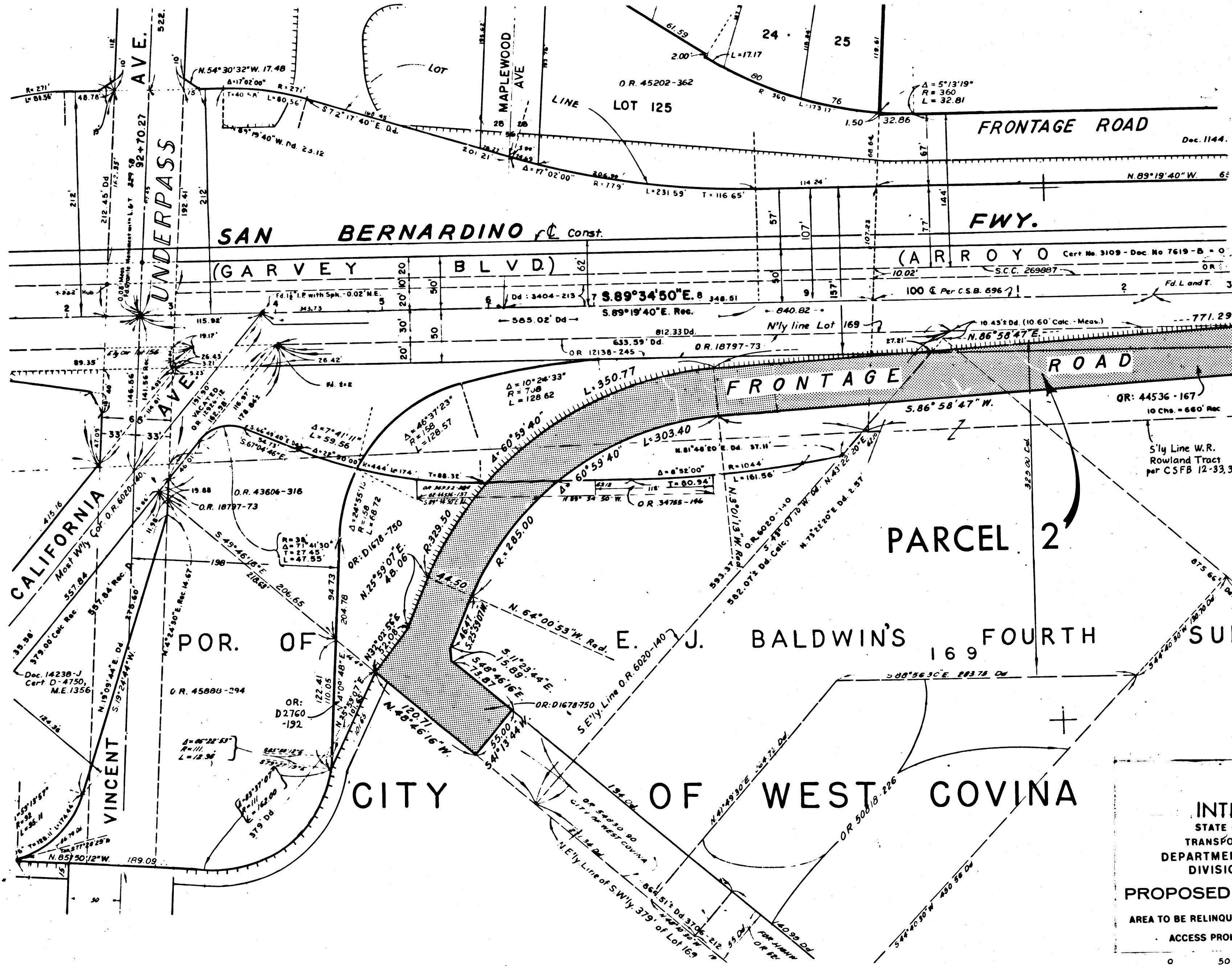
INTERSTATE
STATE OF CALIFORNIA
TRANSPORTATION AGENCY
DEPARTMENT OF PUBLIC WORKS
DIVISION OF HIGHWAYS
PROPOSED RELINQUISHMENT
AREA TO BE RELINQUISHED SHOWN THUS 
ACCESS PROHIBITED 
0 50 100 150 200 Ft.

DIST.	COUNTY	ROUTE	POST MILES	SHEET	TOTAL SHEETS
7	LA	10	35.1/35.8	4	5

FILED WITH LOS ANGELES COUNTY RECORDER, RAY E. LEE

MAY 2 1966
DEPUTY DISTRICT ENGINEER

DATE April 25, 1966



REL-498
 DWN BY R.C.
 CLK BY M.M.
 CRD BY T.W.K.
 BASE MAP NOS. F-1863
 REF. MAP NOS. C.C.M. 72.3 C.C.M. 72.4
 AS BUILT NOS. 160-4

INTERSTATE
 STATE OF CALIFORNIA
 TRANSPORTATION AGENCY
 DEPARTMENT OF PUBLIC WORKS
 DIVISION OF HIGHWAYS

PROPOSED RELINQUISHMENT

AREA TO BE RELINQUISHED SHOWN THUS

ACCESS PROHIBITED

0 50 100 150 200 FT.

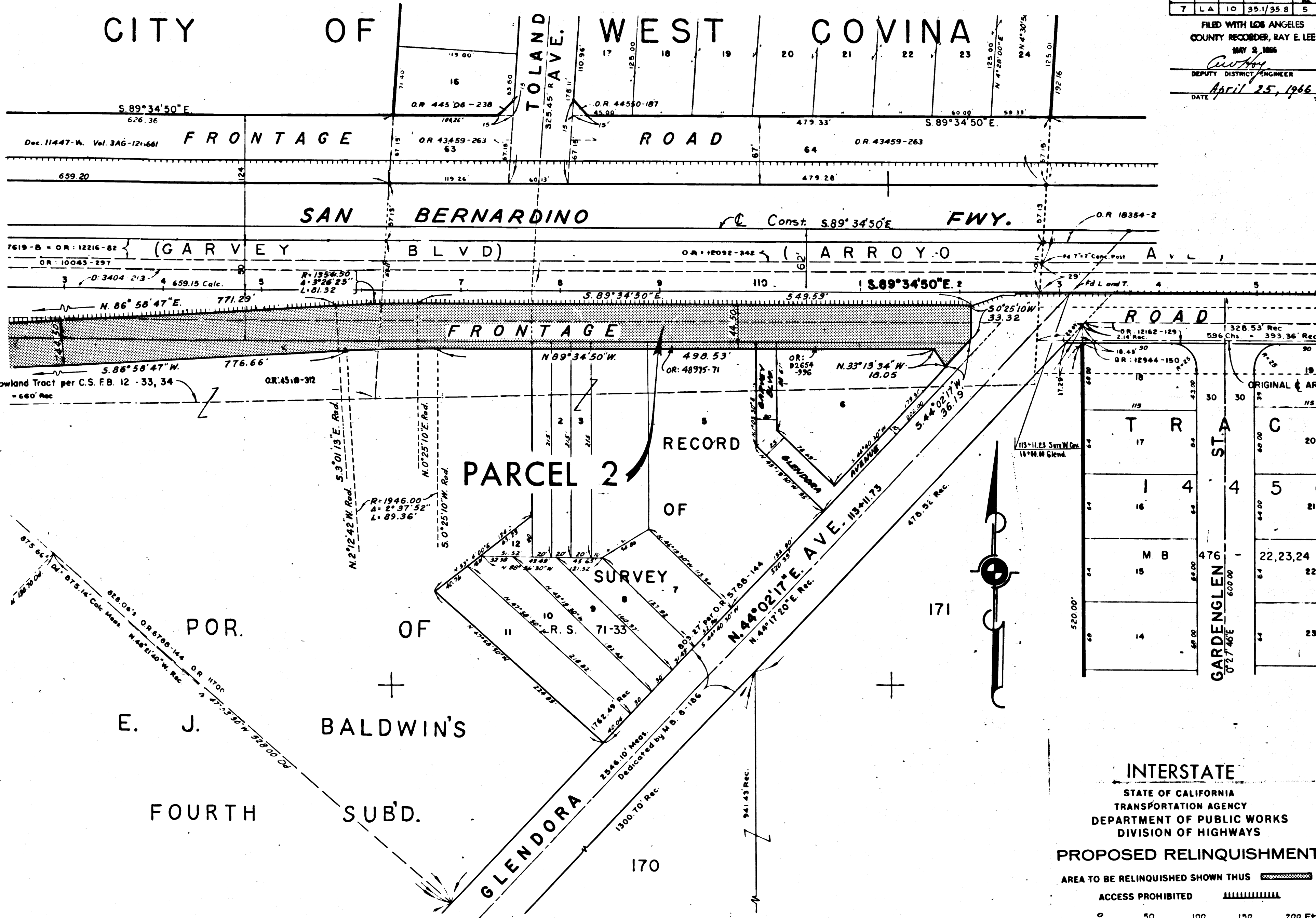
See Sheet 5

DIST.	COUNTY	ROUTE	POST MILES.	SHEET TOTAL
7	L.A.	10	35.1/35.8	5 5

FILED WITH LOS ANGELES
COUNTY RECORDER, RAY E. LEE
MAY 2, 1966

DEPUTY DISTRICT ENGINEER
DATE April 25, 1966

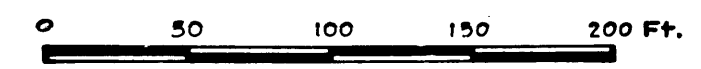
CITY OF WEST COVINA



PARCEL 2
OF
RECORD
SURVEY

POR. OF
E. J. BALDWIN'S
FOURTH SUBD.

INTERSTATE
STATE OF CALIFORNIA
TRANSPORTATION AGENCY
DEPARTMENT OF PUBLIC WORKS
DIVISION OF HIGHWAYS
PROPOSED RELINQUISHMENT
AREA TO BE RELINQUISHED SHOWN THUS [hatched box]
ACCESS PROHIBITED [dashed line]



REL-498
DWN BY R. G.
CLC BY M. M.
CKD BY T. W. C.
BASE MAP NOS.
F-1863
REF. MAP NOS.
C.C.M. 72.3
C.C.M. 72.4
AS BUILT NOS.
160-4