

BOOK 4 PAGE 54				
DIST	COUNTY	ROUTE	POST MILES	SHEET TOTAL
7	L.A.	605	168/170	1 2

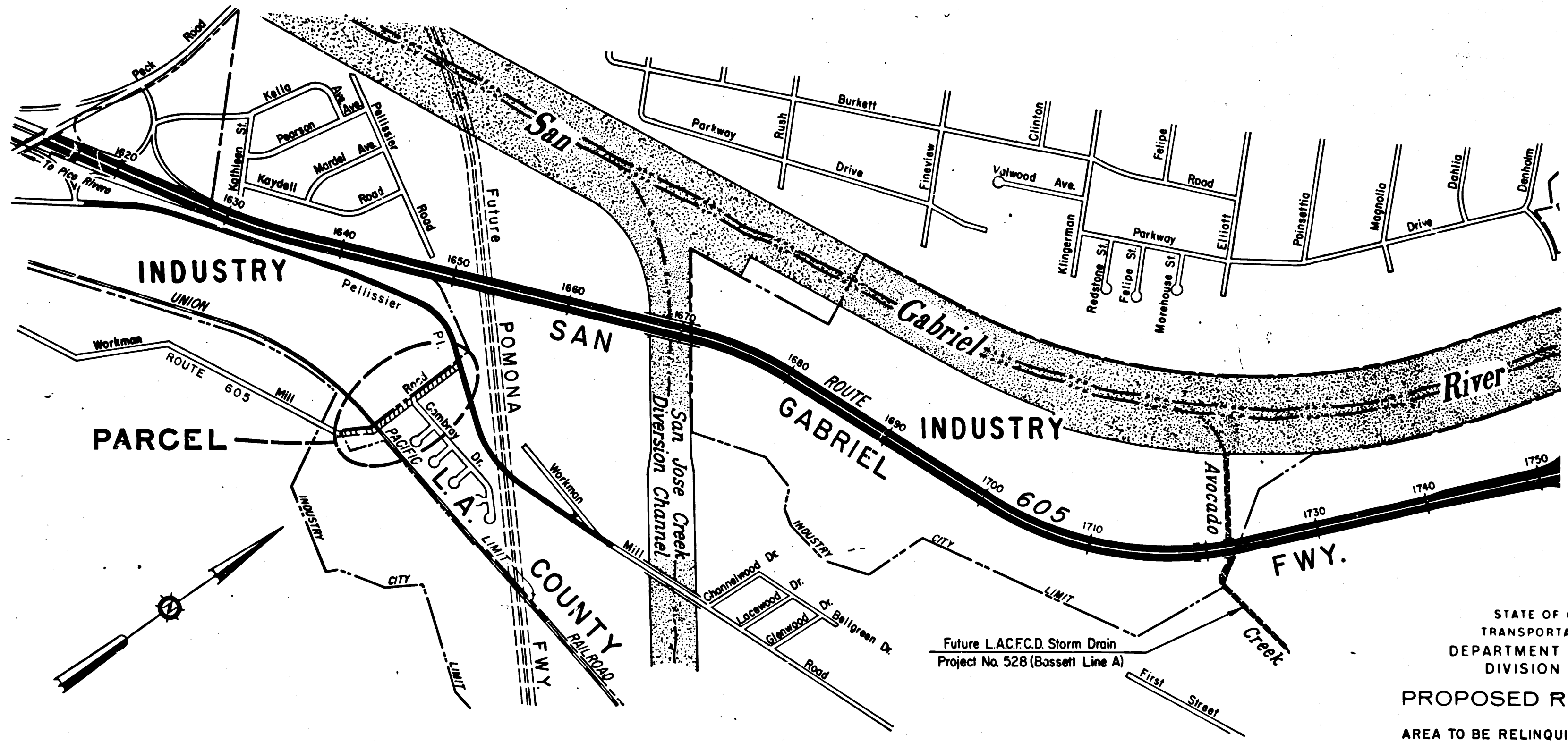
REDellebach
 DEPUTY DISTRICT ENGINEER
 DATE *May 25, 1966*

STATE OF CALIFORNIA
 TRANSPORTATION AGENCY
 DEPARTMENT OF PUBLIC WORKS
 DIVISION OF HIGHWAYS

RIGHT OF WAY MAPS OF
STATE HIGHWAY
 In Los Angeles County on Workman Mill Road between
 0.1 mile south of Union Pacific Railroad and Pellissier Place

2970

RECORDED
 AT REQUEST OF
 DEPT. OF PUBLIC WORKS
 JUNE 3, 1966
 1 25 PM 12 P.M.
 4
 54
 OF STATE HIGHWAY MAPS
 LOS ANGELES COUNTY, CALIF.
 RAY E. LEE
 COUNTY RECORDER
 FREE



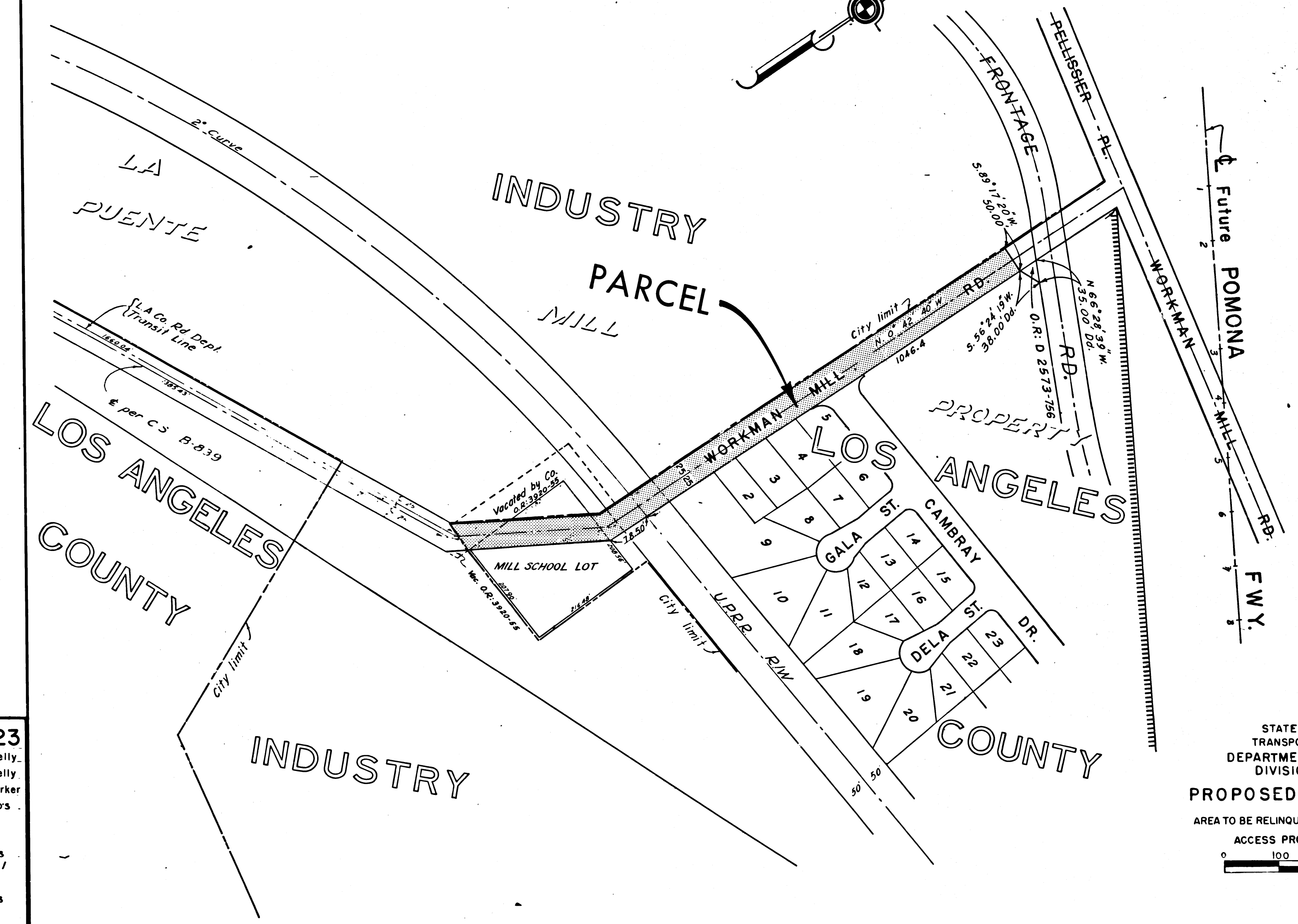
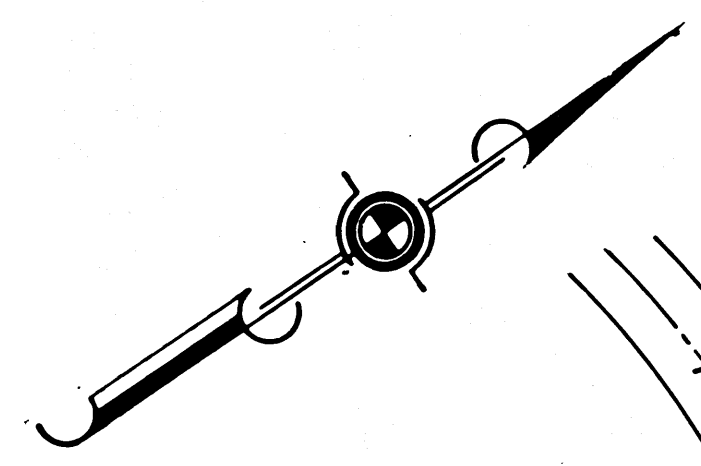
REL-523
 DRN BY R. Kelly
 C.L.C. BY R. Kelly
 CK'D BY T. Kerker
 BASE MAP NOS.
 B-7219
 F-1788
 REF. MAP NOS.
 C.G.M. 209.1
 AS BUILT NOS.

STATE OF CALIFORNIA
 TRANSPORTATION AGENCY
 DEPARTMENT OF PUBLIC WORKS
 DIVISION OF HIGHWAYS
PROPOSED RELINQUISHMENT
 AREA TO BE RELINQUISHED SHOWN THUS



0 1000 2000 3000 FEET

REDelfebach
 DEPUTY DISTRICT ENGINEER
 DATE *May 25, 1966*

FILED WITH LOS ANGELES
 COUNTY RECORDER, BAY E. LEE
 JUN 3 1966



REL-523
 DRN BY R. Kelly
 C/LC BY R. Kelly
 CK'D BY T. Kerker
 BASE MAP NO'S
 P-7219
 F-1788
 REF. MAP NO'S
 C.C.M. 209.1
 AS BUILT NO'S

STATE OF CALIFORNIA
 TRANSPORTATION AGENCY
 DEPARTMENT OF PUBLIC WORKS
 DIVISION OF HIGHWAYS
PROPOSED RELINQUISHMENT
 AREA TO BE RELINQUISHED SHOWN THUS 
 ACCESS PROHIBITED 
 0 100 200 300 400