

DIST.	COUNTY	ROUTE	POST MILES.	SHEET TOTAL
7	L.A.	10	13.3	1 2

STATE OF CALIFORNIA
 TRANSPORTATION AGENCY
 DEPARTMENT OF PUBLIC WORKS
 DIVISION OF HIGHWAYS

2971

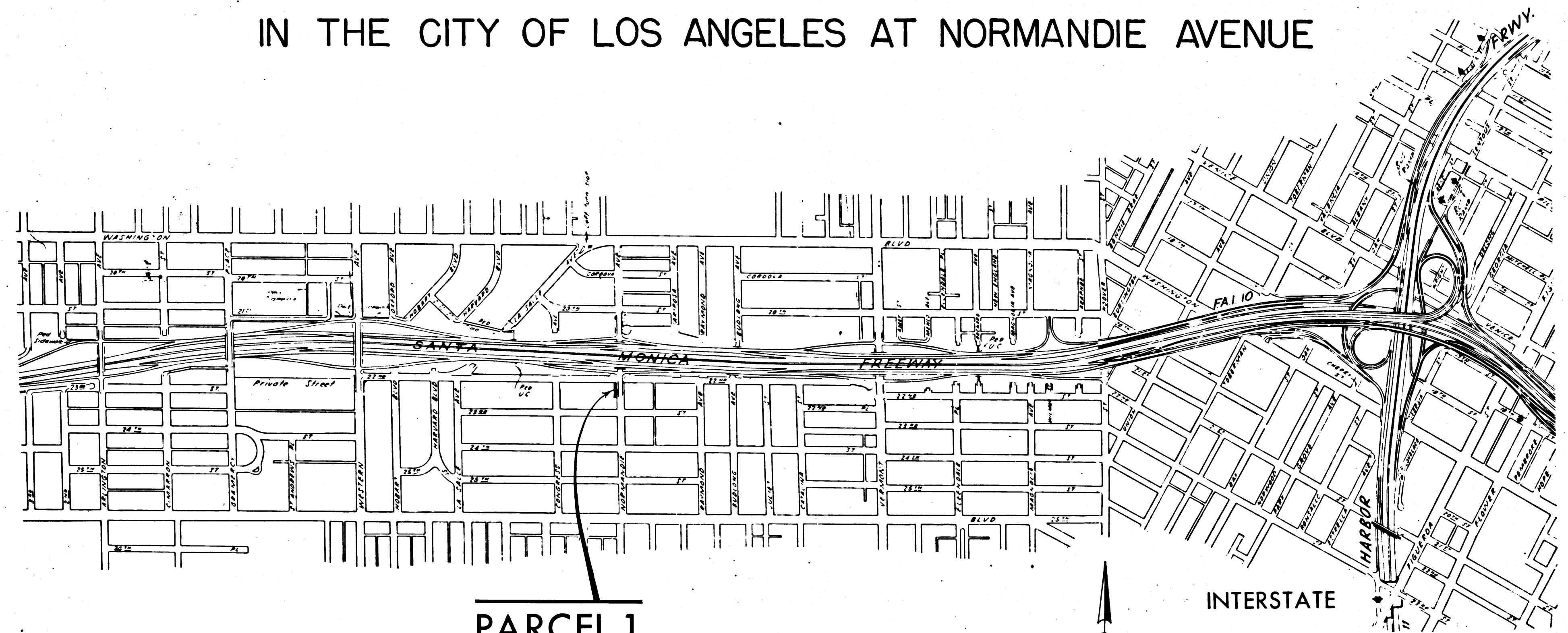
RED DeFeluch
 DEPUTY DISTRICT ENGINEER
 DATE May 25, 1966

RECORDED
 AT REQUEST OF
 DEPT. OF PUBLIC WORKS
 JUNE 3, 1966
 25 MIN. PAST 12 P.M.

BOOK 4
 PAGE 56
 OF STATE HIGHWAY MAPS
 LOS ANGELES COUNTY, CALIF.
 RAY E. LEE
 COUNTY RECORDER
 BY *[Signature]* FREE

RIGHT OF WAY MAPS OF
STATE HIGHWAY

IN THE CITY OF LOS ANGELES AT NORMANDIE AVENUE



PARCEL 1

CITY OF LOS ANGELES

INTERSTATE

STATE OF CALIFORNIA
 TRANSPORTATION AGENCY
 DEPARTMENT OF PUBLIC WORKS
 DIVISION OF HIGHWAYS
 PROPOSED RELINQUISHMENT

AREA TO BE RELINQUISHED SHOWN THUS

SCALE
 0 600 1200 1800 2400

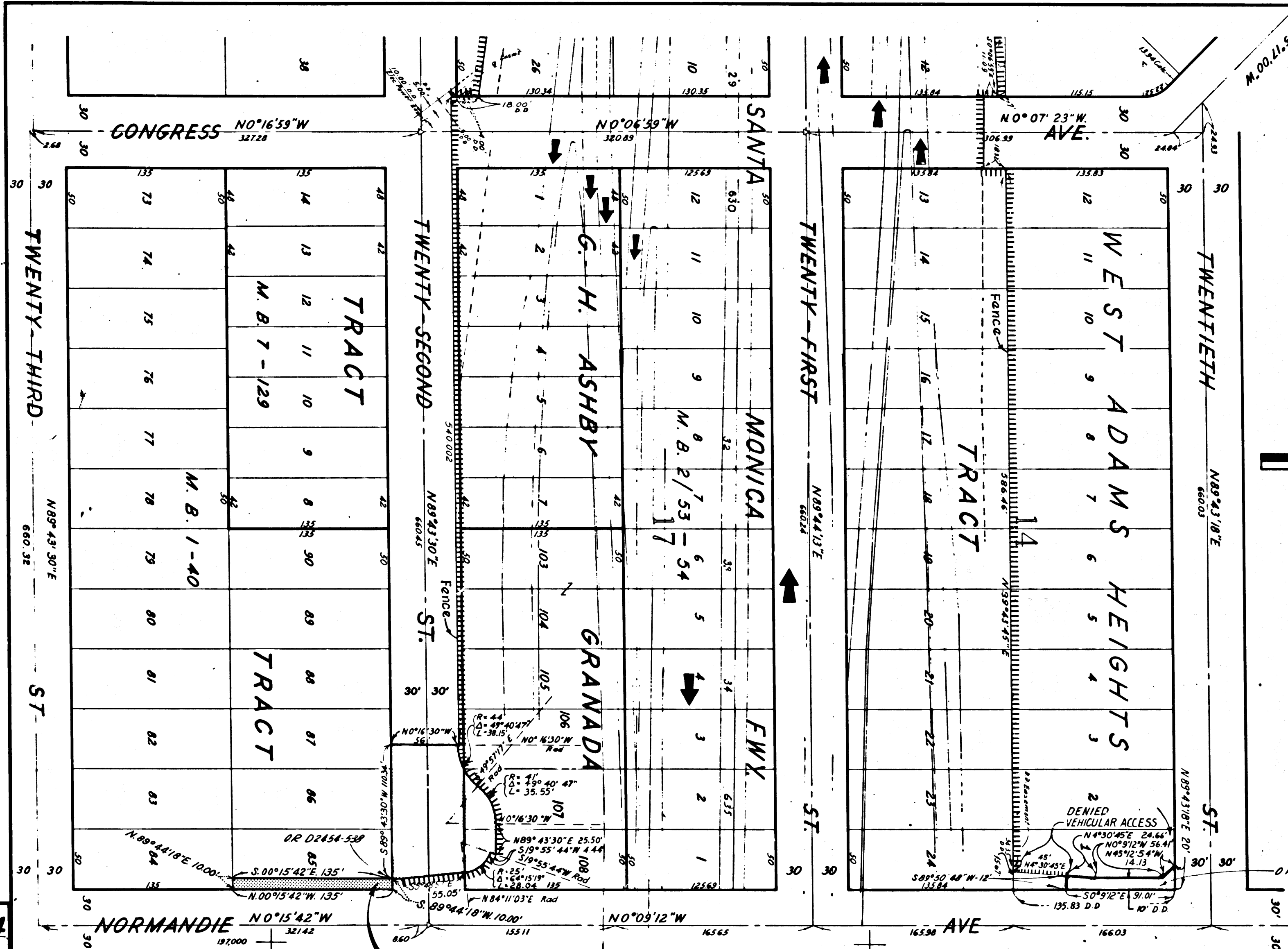
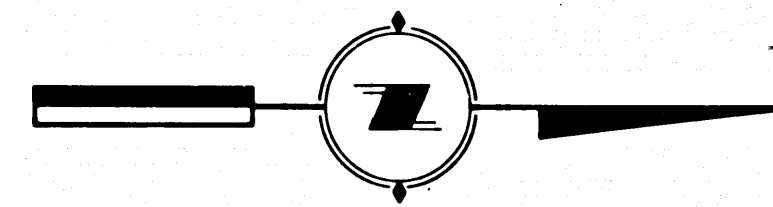
REL-534
 DRN BY U.G.B.
 C/LC BY U.G.B.
 CKD BY _____
 BASE MAP NO'S F-2076
 REF. MAP NO'S CCM 220.4
 AS BUILT NO'S 148.4

4/54-57

DIST	COUNTY	ROUTE	POST MILES	SHEET TOTAL
7	LA	10	13.3	2

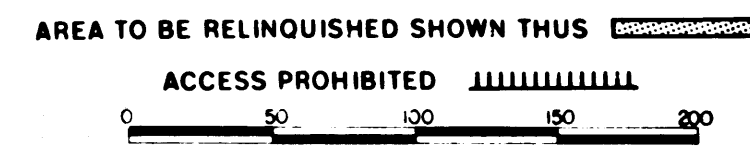
RED Delebach
 DEPUTY DISTRICT ENGINEER
 DATE *May 25, 1966*

FILED WITH LOS ANGELES
 COUNTY RECORDER, RAY E. LEE
 JUN 3 1966



PARCEL 1
CITY OF LOS ANGELES

INTERSTATE
 STATE OF CALIFORNIA
 TRANSPORTATION AGENCY
 DEPARTMENT OF PUBLIC WORKS
 DIVISION OF HIGHWAYS
PROPOSED RELINQUISHMENT



REL-534
 DRN BY *J.G.B.*
 C/LC BY *J.G.B.*
 CK'D BY
 BASE MAP NO'S
F-2076
 REF. MAP NO'S
 C.C.M. 220.4
 AS BUILT NO'S
149-A