

STATE OF CALIFORNIA
 TRANSPORTATION AGENCY
 DEPARTMENT OF PUBLIC WORKS
 DIVISION OF HIGHWAYS

RIGHT OF WAY MAPS OF
STATE HIGHWAY

On ROUTE 605 between ORANGE COUNTY LINE and SANTA ANA FREEWAY

BOOK 4 PAGE 62

DIST.	COUNTY	ROUTE	POST MILES.	SHEET NO.	TOTAL SHEETS
7	LA	605	0.0/7.4	1	5

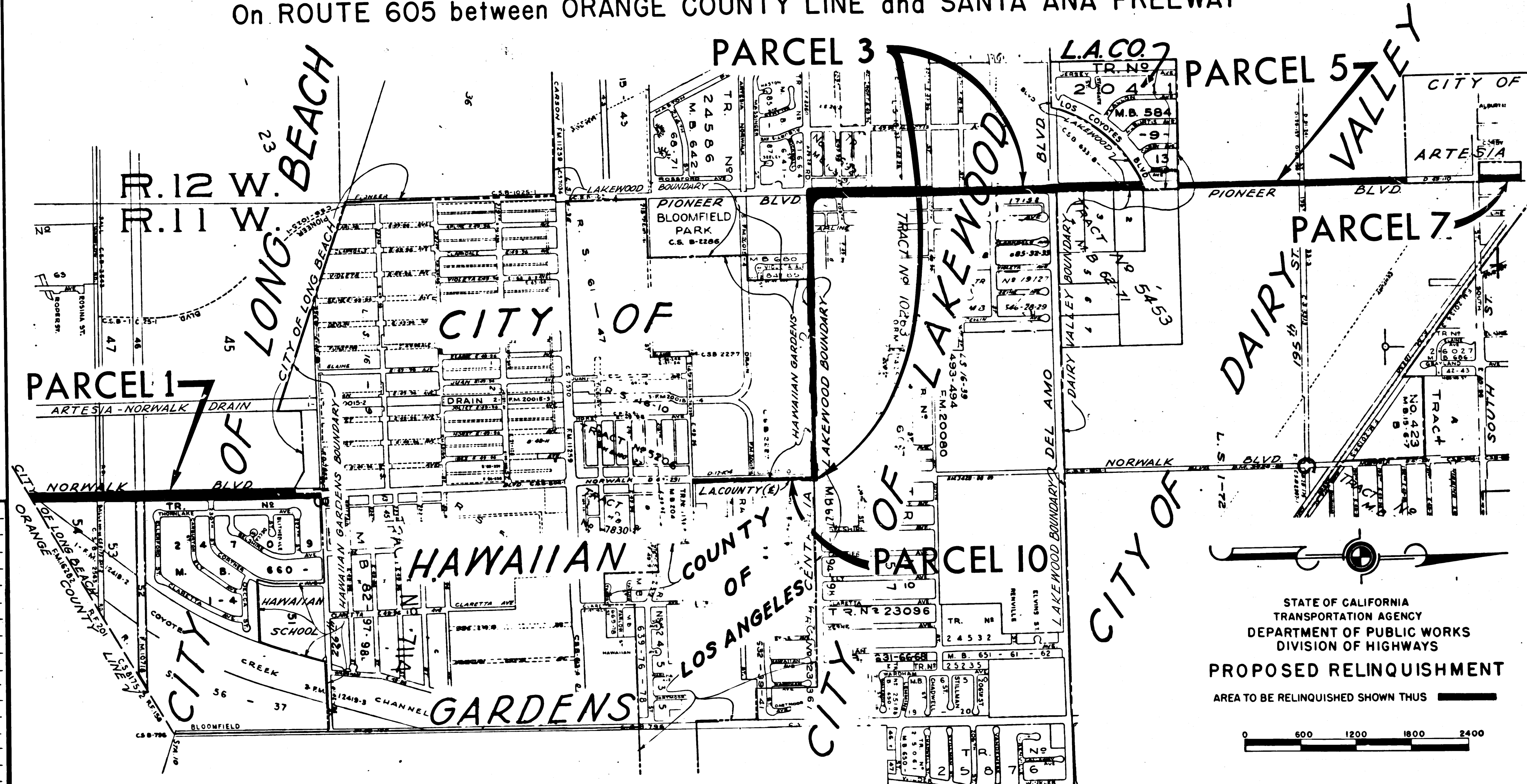
2560

RECORDED
 AT REQUEST OF
 DEPT. OF PUBLIC WORKS
 JUNE 17, 1966
 5 MIN.
 PAST 9 AM.

Ray E. Lee
 DEPUTY DISTRICT ENGINEER

JUNE 13, 1966

AS SHOWN ON
 4
 62
 OF STATE HIGHWAY MAPS
 LOS ANGELES COUNTY, CALIF.
 RAY E. LEE
 COUNTY RECORDER
 FREE



906
 1/2

Revised 4/66
 REL-526
 527
 528
 529
 530
 531
 532
 DRN BY RSD
 C.L.C. BY RSD
 CK'D BY JGB
 BASE MAP NOS.
 F.1956
 F.1957
 REF. MAP NOS.
 CCM 208.1
 AS BUILT NO'S

STATE OF CALIFORNIA
 TRANSPORTATION AGENCY
 DEPARTMENT OF PUBLIC WORKS
 DIVISION OF HIGHWAYS

PROPOSED RELINQUISHMENT

AREA TO BE RELINQUISHED SHOWN THUS

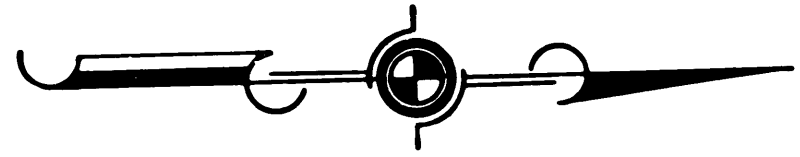


DIST	COUNTY	ROUTE	POST MILES	SHEET NO.	TOTAL SHEETS
7	LA	605	00/7.4	2	5

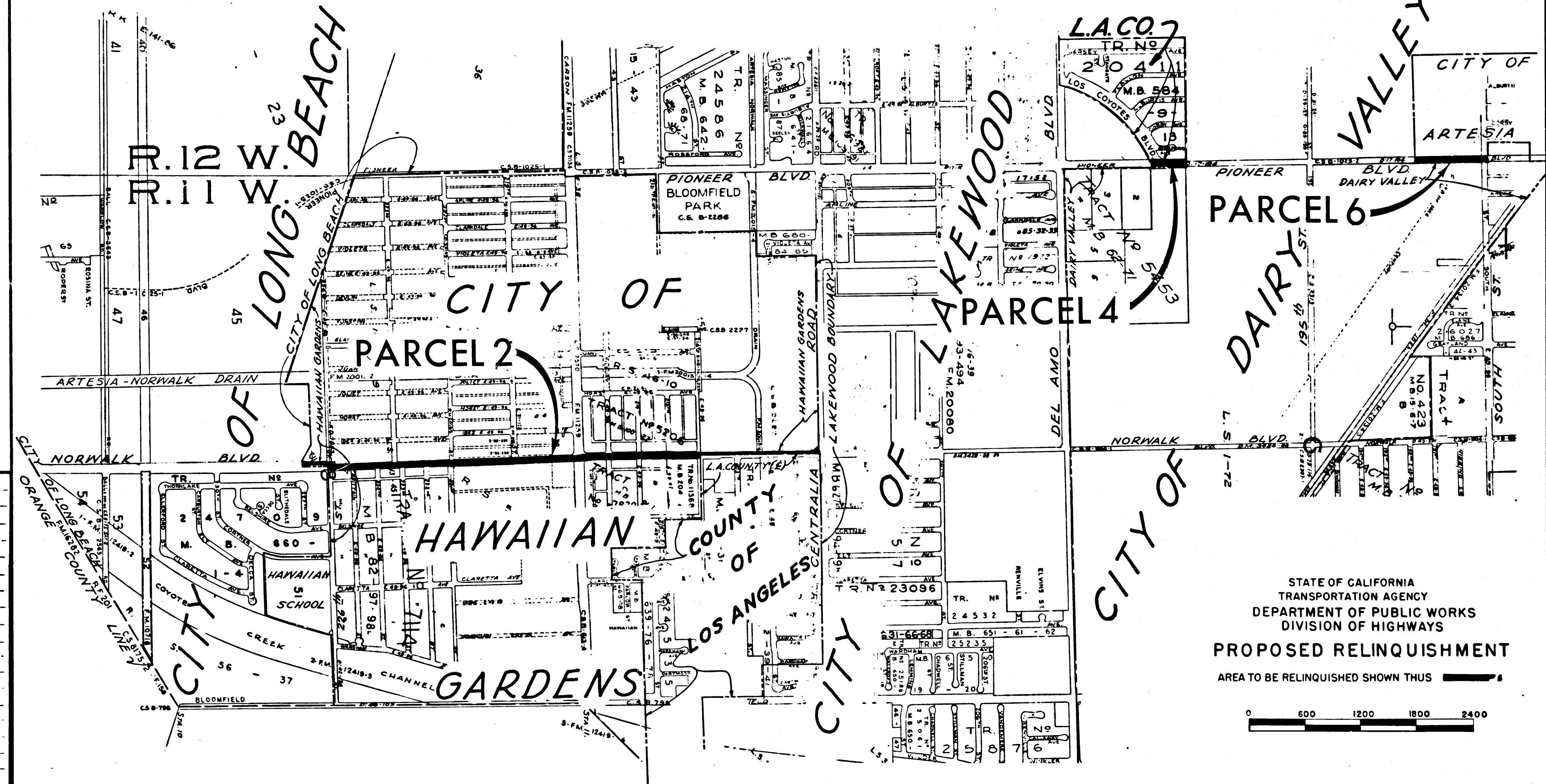
FILED WITH LOS ANGELES
 COUNTY RECORDER, RAY E. LEE
 JUN 17 1966

Anthony
 DEPUTY DISTRICT ENGINEER

DATE June 13, 1966



On ROUTE 605 between ORANGE COUNTY LINE and SANTA ANA FREEWAY



- Revised 4/66
- REL- 526
 - 527
 - 528
 - 529
 - 530
 - 531
 - 532
- DRN BY RSD
 C/LC BY RSD
 C/K'D BY JGB
 BASE MAP NO'S
 F.1956
 F.1957
- REF. MAP NO'S
 CCM 208.1
 " 208.2
- AS BUILT NO'S

STATE OF CALIFORNIA
 TRANSPORTATION AGENCY
 DEPARTMENT OF PUBLIC WORKS
 DIVISION OF HIGHWAYS
PROPOSED RELINQUISHMENT
 AREA TO BE RELINQUISHED SHOWN THUS



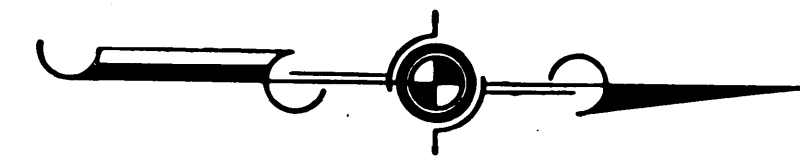
DIST	COUNTY	ROUTE	POST MILES	SHEET NO.	TOTAL SHEETS
7	LA	605	0.0/7.4	3	5

FILED WITH LOS ANGELES COUNTY RECORDER, RAY E. LEE JUN 17 1966

Ray E. Lee
DEPUTY DISTRICT ENGINEER

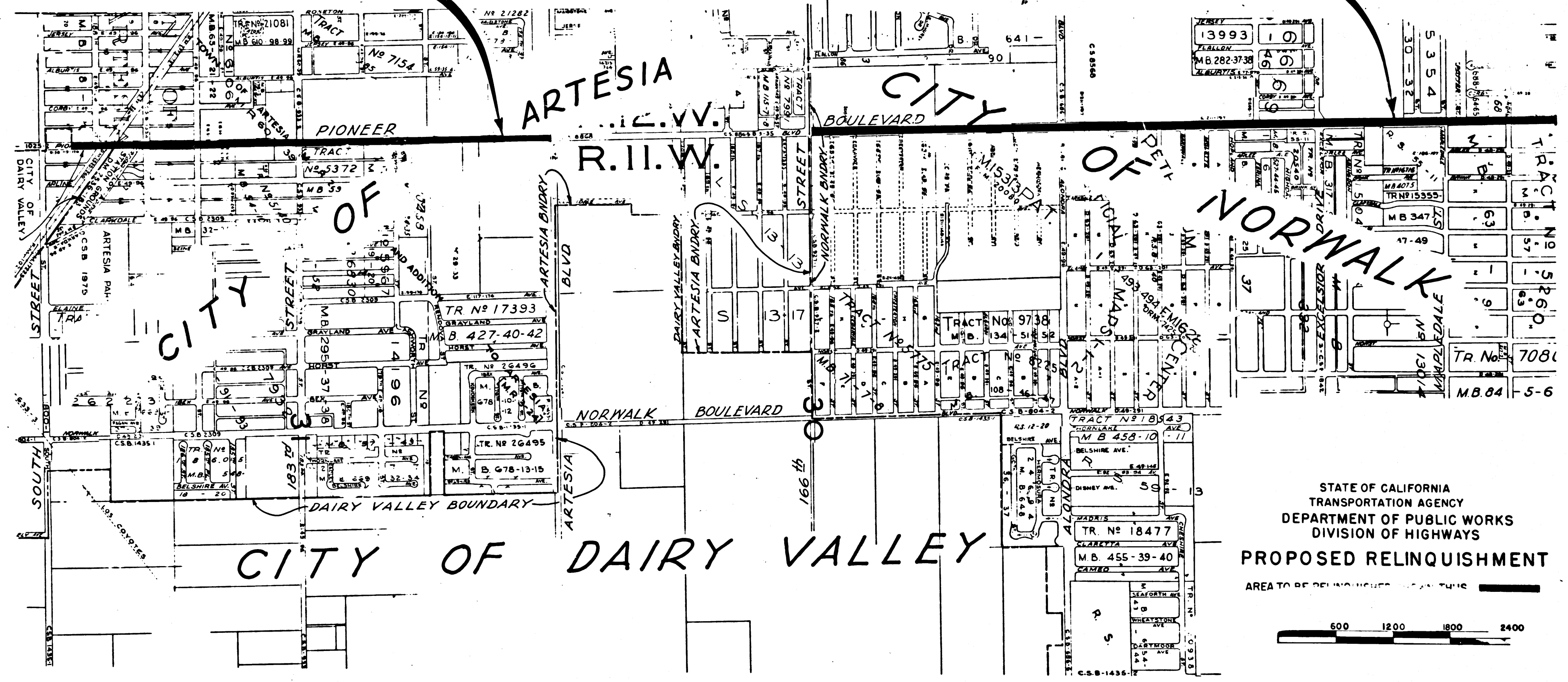
DATE June 13, 1966

On ROUTE 605 between ORANGE COUNTY LINE and SANTA ANA FREEWAY



PARCEL 8

PARCEL 9



REL-526
527
528
529
530
531
532
DRN BY RSD
CLC BY RSD
CKD BY UGB
BASE MAP NO'S
F.1956
F.1957
REF. MAP NO'S
CGM 208.1
208.2
AS BUILT NO'S

STATE OF CALIFORNIA
TRANSPORTATION AGENCY
DEPARTMENT OF PUBLIC WORKS
DIVISION OF HIGHWAYS
PROPOSED RELINQUISHMENT
AREA TO BE RELINQUISHED IS SHOWN BY THIS

600 1200 1800 2400

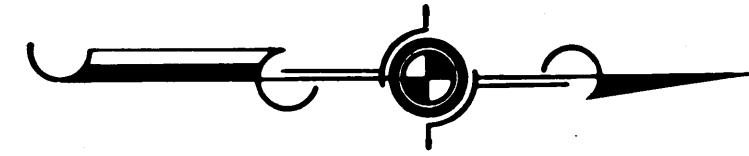
DIST	COUNTY	ROUTE	POST MILES	SHEET NO.	TOTAL SHEETS
7	LA	605	0.0/7.4	4	5

FILED WITH LOS ANGELES
COUNTY RECORDER, RAY E. LEE
JUN 17 1966

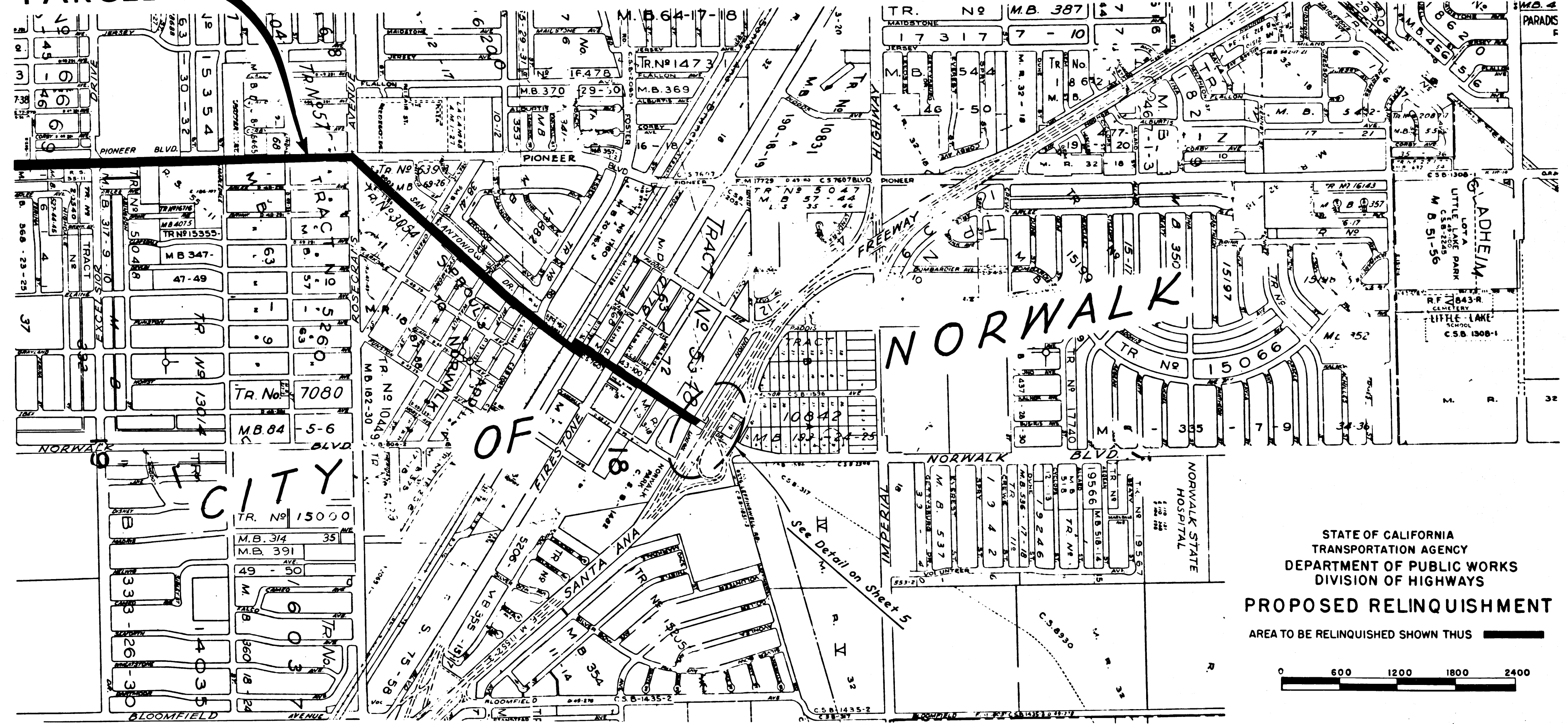
Ray E. Lee
DEPUTY DISTRICT ENGINEER

DATE June 13, 1966

On ROUTE 605 between ORANGE COUNTY LINE and SANTA ANA FREEWAY



PARCEL 9



- REL-526
- 527
- 528
- 529
- 530
- 531
- 532
- DRN BY RSD
- CLC BY RSD
- CK'D BY JGB
- BASE MAP NOS. F.2001
- REF. MAP NOS. CCM 2082
- AS BUILT NOS.

STATE OF CALIFORNIA
TRANSPORTATION AGENCY
DEPARTMENT OF PUBLIC WORKS
DIVISION OF HIGHWAYS

PROPOSED RELINQUISHMENT

AREA TO BE RELINQUISHED SHOWN THUS

0 600 1200 1800 2400

DIST	COUNTY	ROUTE	POST MILES	SHEET NO.	TOTAL SHEETS
7	LA	605	0.0/7.4	5	5

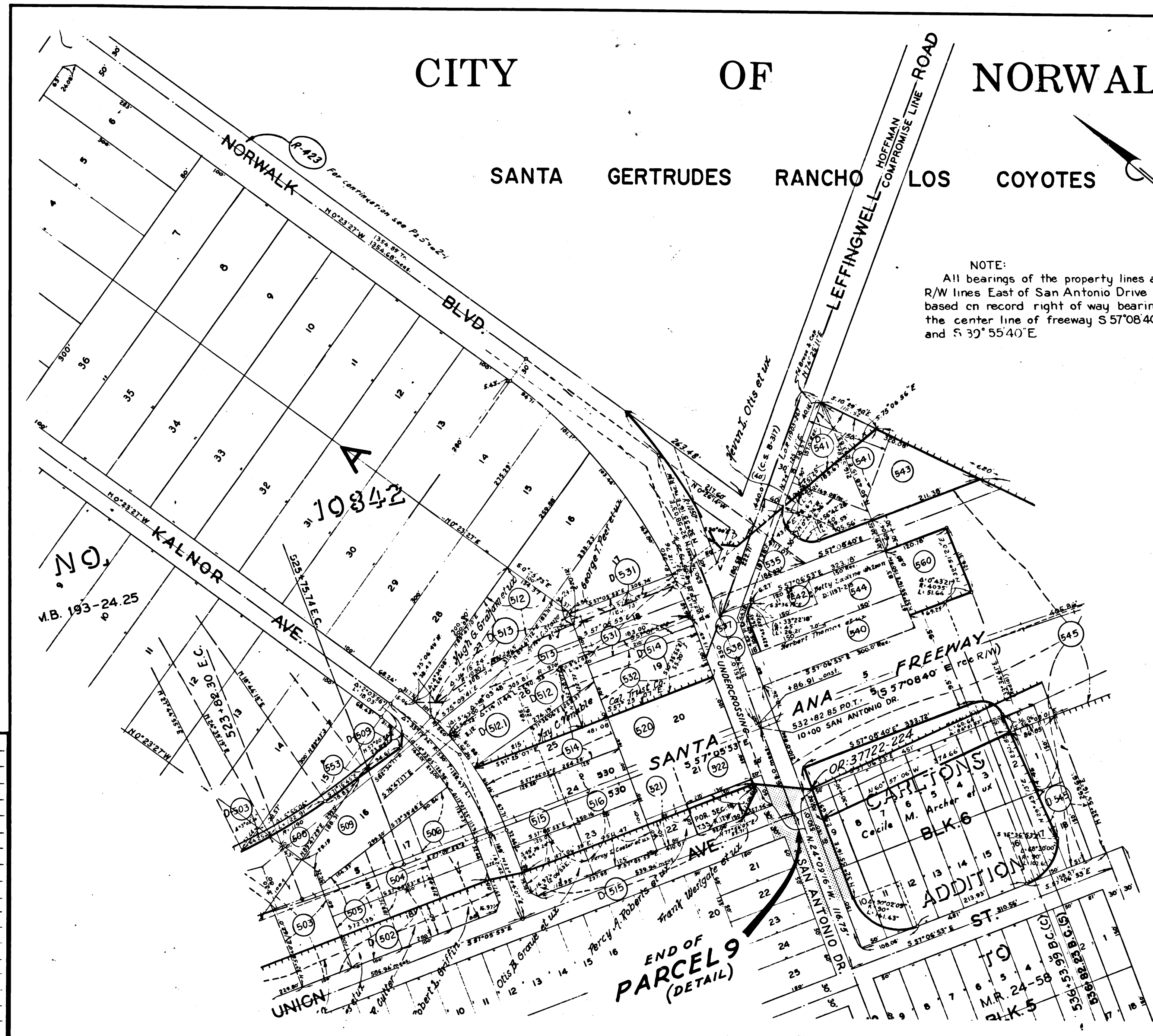
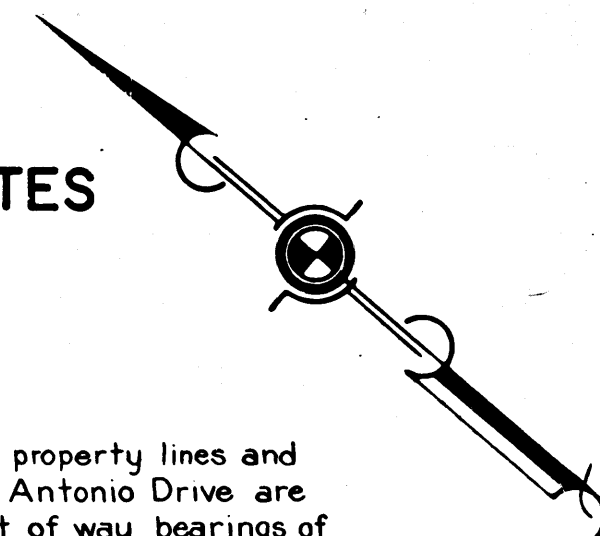
FILED WITH LOS ANGELES
COUNTY RECORDER, RAY E. LEE
JUN 17 1966

C. W. Hoyle
DEPUTY DISTRICT ENGINEER
DATE June 13, 1966

CITY OF NORWALK

SANTA GERTRUDES RANCHO LOS COYOTES

NOTE:
All bearings of the property lines and R/W lines East of San Antonio Drive are based on record right of way bearings of the center line of freeway S 57°08'40" E and S 39°55'40" E



REL- 526
527
528
529
530
531
532

DRN BY J.F.
C'LC BY J.F.
C'KD BY JGB
BASE MAP NOS.
F 2001

REF. MAP NOS.
CCM 208.2

AS BUILT NOS.

STATE OF CALIFORNIA
TRANSPORTATION AGENCY
DEPARTMENT OF PUBLIC WORKS
DIVISION OF HIGHWAYS

PROPOSED RELINQUISHMENT

AREA TO BE RELINQUISHED SHOWN THUS

ACCESS PROHIBITED

0 100 200 300 400

END OF
PARCEL 9
(DETAIL)