

DIST	COUNTY	ROUTE	POST MILES	SHEET No.	TOTAL SHEETS
7	L.A.	10	104/11.4	1	7

STATE OF CALIFORNIA  
 TRANSPORTATION AGENCY  
 DEPARTMENT OF PUBLIC WORKS  
 DIVISION OF HIGHWAYS

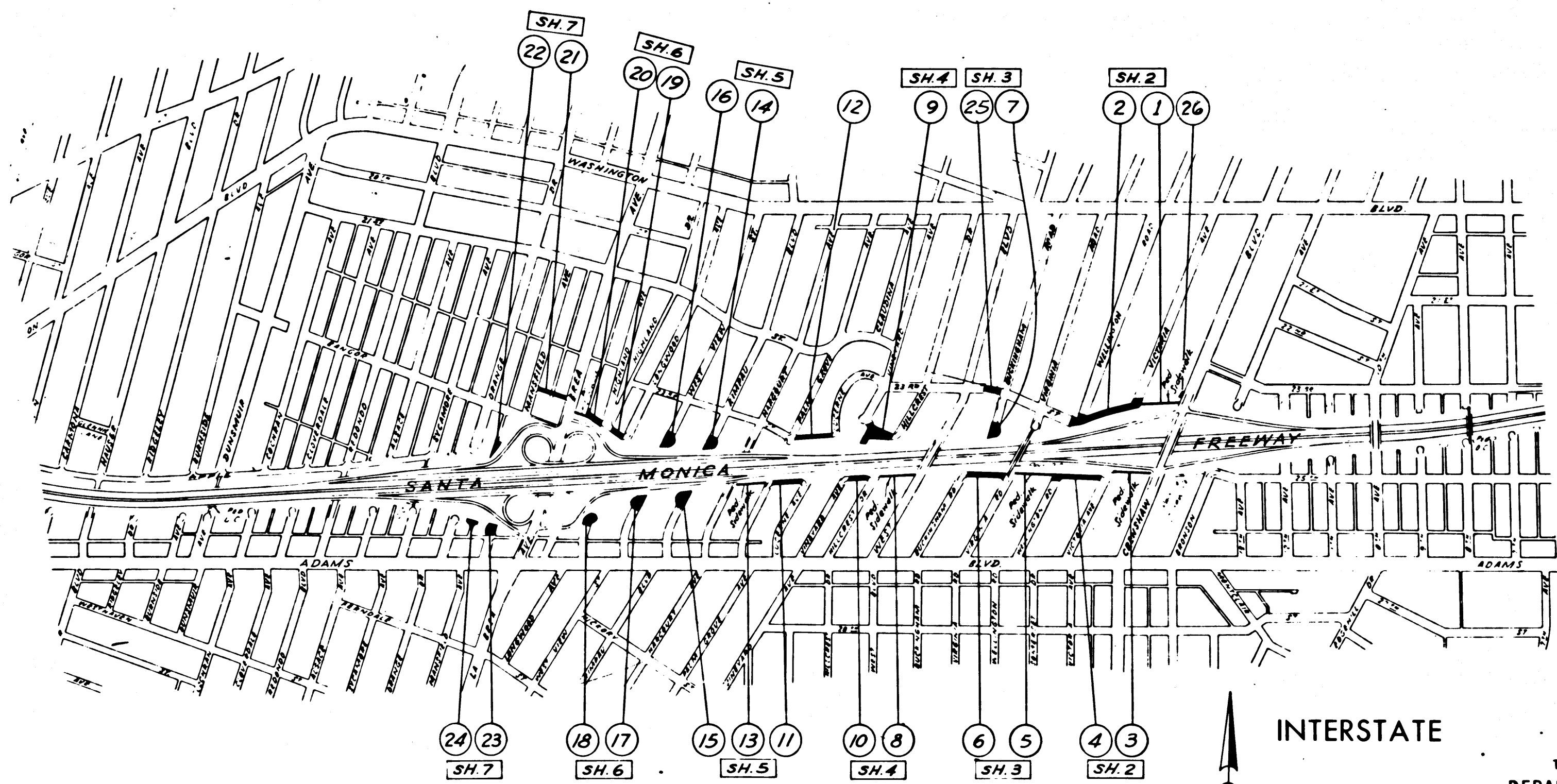
*C. W. Hoy*  
 DEPUTY DISTRICT ENGINEER  
 DATE June 15, 1966

RIGHT OF WAY MAPS OF  
 STATE HIGHWAY

in city of los angeles between crenshaw blvd. and orange drive

2038  
 RECORDED  
 AT REQUEST OF  
 DEPT. OF PUBLIC WORKS  
 JUNE 21, 1966  
 15 PAST 9 A.M.  
 IN BOOK 4  
 AT PAGE 71  
 OF STATE HIGHWAY MAPS  
 LOS ANGELES COUNTY, CALIF.  
 RAY E. LEE  
 COUNTY RECORDER  
 FREE




4/11-77



CITY OF LOS ANGELES

INTERSTATE

STATE OF CALIFORNIA  
 TRANSPORTATION AGENCY  
 DEPARTMENT OF PUBLIC WORKS  
 DIVISION OF HIGHWAYS  
 PROPOSED RELINQUISHMENT

AREA TO BE RELINQUISHED SHOWN THUS   
 PARCEL NOS. SHOWN THUS:   
 SCALE: 

Revised 4/66  
 REL-465  
 DRN BY R.S.D.  
 C.L.C. BY R.S.D.  
 CK'D BY M.M.  
 BASE MAP NO'S  
 CCM 220.4  
 REF. MAP NO'S  
 F-2074  
 AS BUILT NO'S  
 148-4

DIST	COUNTY	ROUTE	POST MILES.	SHEET NO.	TOTAL SHEETS
7	LA	10	10.4	114	27

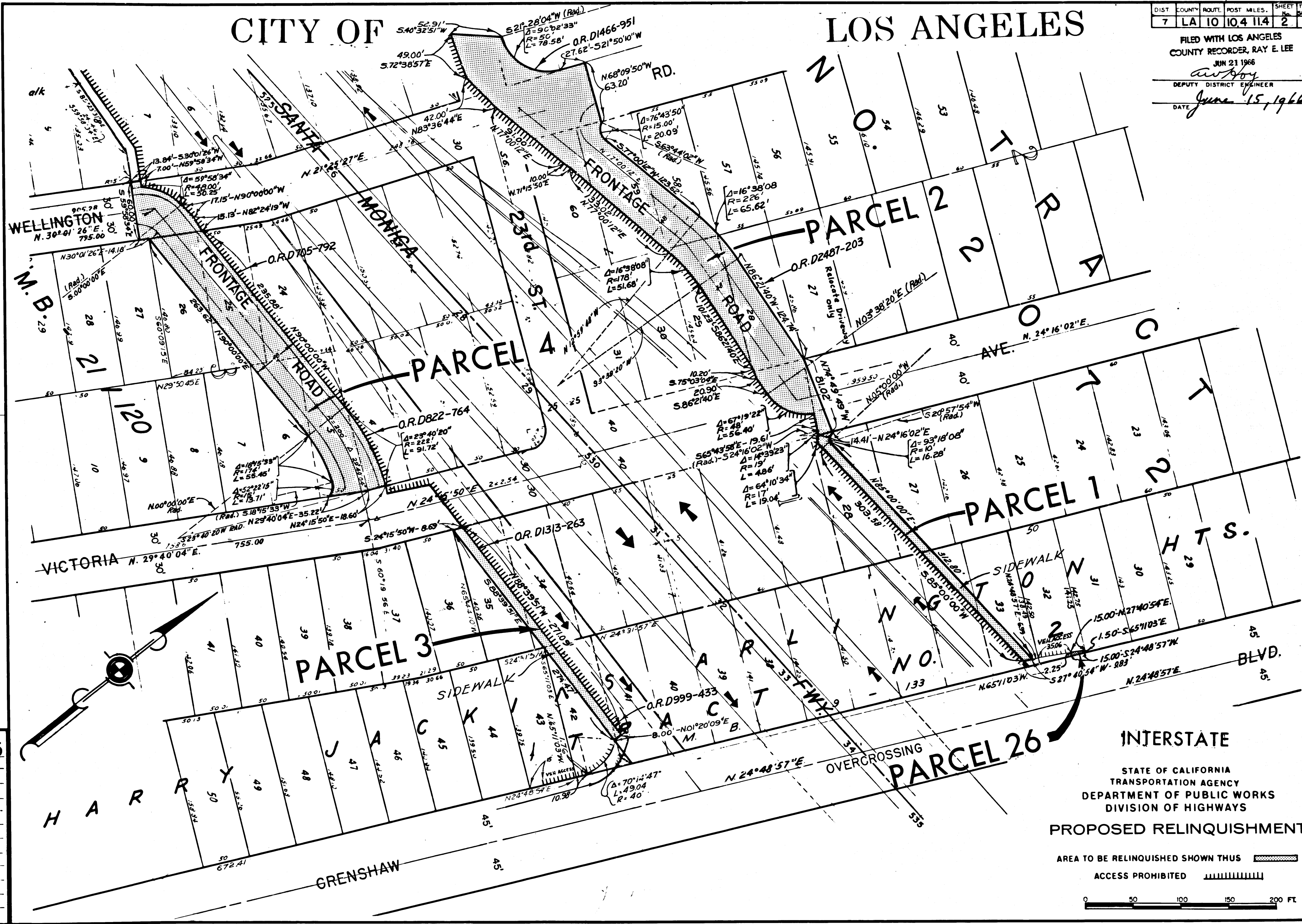
FILED WITH LOS ANGELES COUNTY RECORDER, RAY E. LEE

JUN 21 1966

DEPUTY DISTRICT ENGINEER

DATE June 15, 1966

# CITY OF LOS ANGELES



Revised 4/66

REL-465  
 DWN BY W.F.S.  
 C/LC BY RSD.  
 CKD BY M.M.  
 BASE MAP NO'S  
 F-2074

REF. MAP NO'S  
 CCM 2203

AS BUILT NO'S  
 148-4

INTERSTATE

STATE OF CALIFORNIA  
 TRANSPORTATION AGENCY  
 DEPARTMENT OF PUBLIC WORKS  
 DIVISION OF HIGHWAYS

PROPOSED RELINQUISHMENT

AREA TO BE RELINQUISHED SHOWN THUS [Symbol]

ACCESS PROHIBITED [Symbol]

0 50 100 150 200 FT

DIST.	COUNTY	ROUTE	POST MILES.	SHEET No.	TOTAL SHEETS
7	LA	10	10.4/11.4	3	7

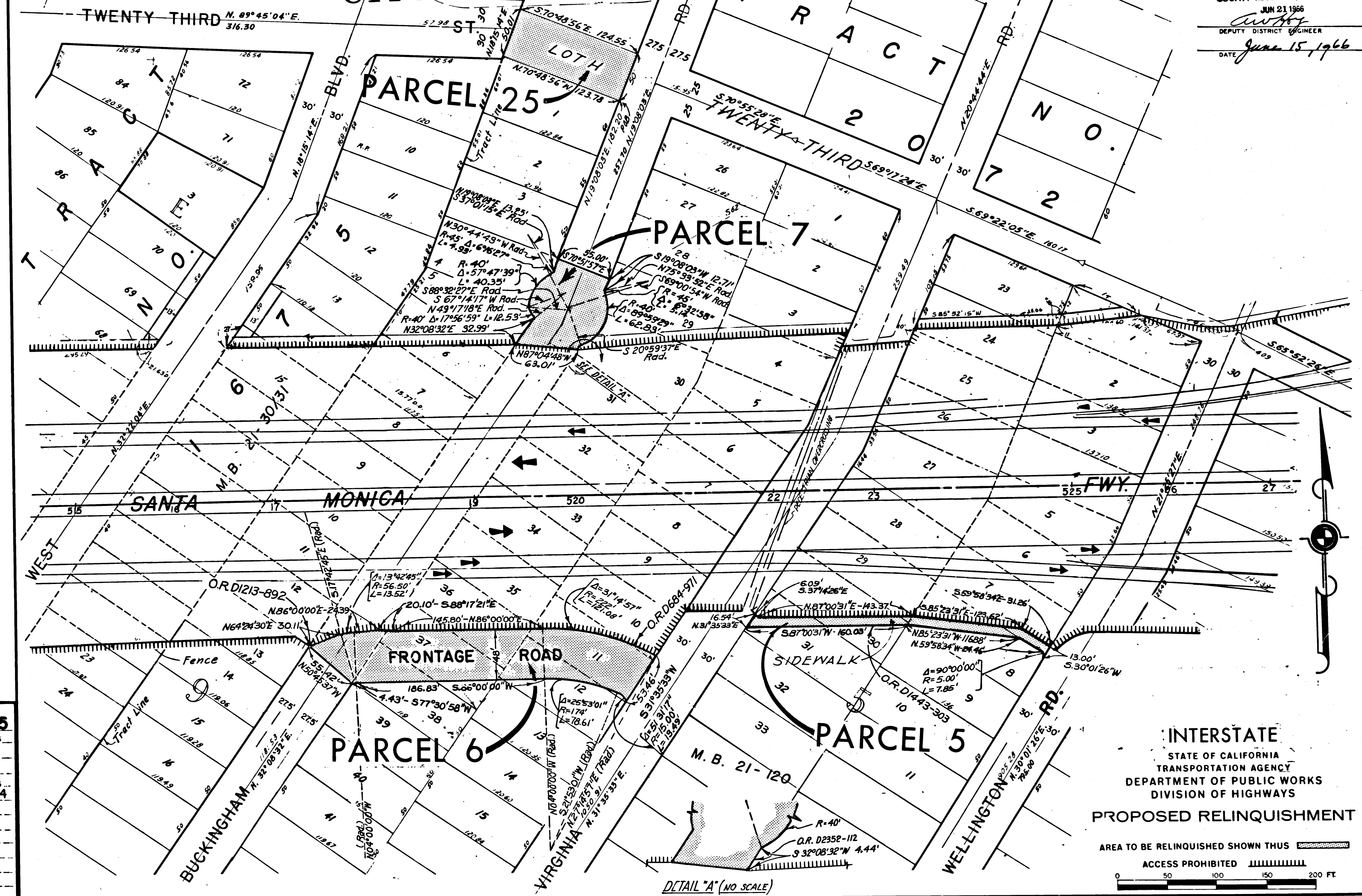
FILED WITH LOS ANGELES COUNTY RECORDER, RAY E. LEE

JUN 21 1966

DEPUTY DISTRICT ENGINEER

DATE June 15, 1966

# CITY OF LOS ANGELES



Revised 4/66

REL-465

DRN BY: W.F.S.  
 CLC BY: RSD  
 CKD BY: M.M.  
 BASE MAP NOS.:  
 C.C.M. 220.4

REF. MAP NOS.:  
 F-2074

AS BUILT NOS.:  
 138.4

INTERSTATE  
 STATE OF CALIFORNIA  
 TRANSPORTATION AGENCY  
 DEPARTMENT OF PUBLIC WORKS  
 DIVISION OF HIGHWAYS  
 PROPOSED RELINQUISHMENT

AREA TO BE RELINQUISHED SHOWN THUS

ACCESS PROHIBITED

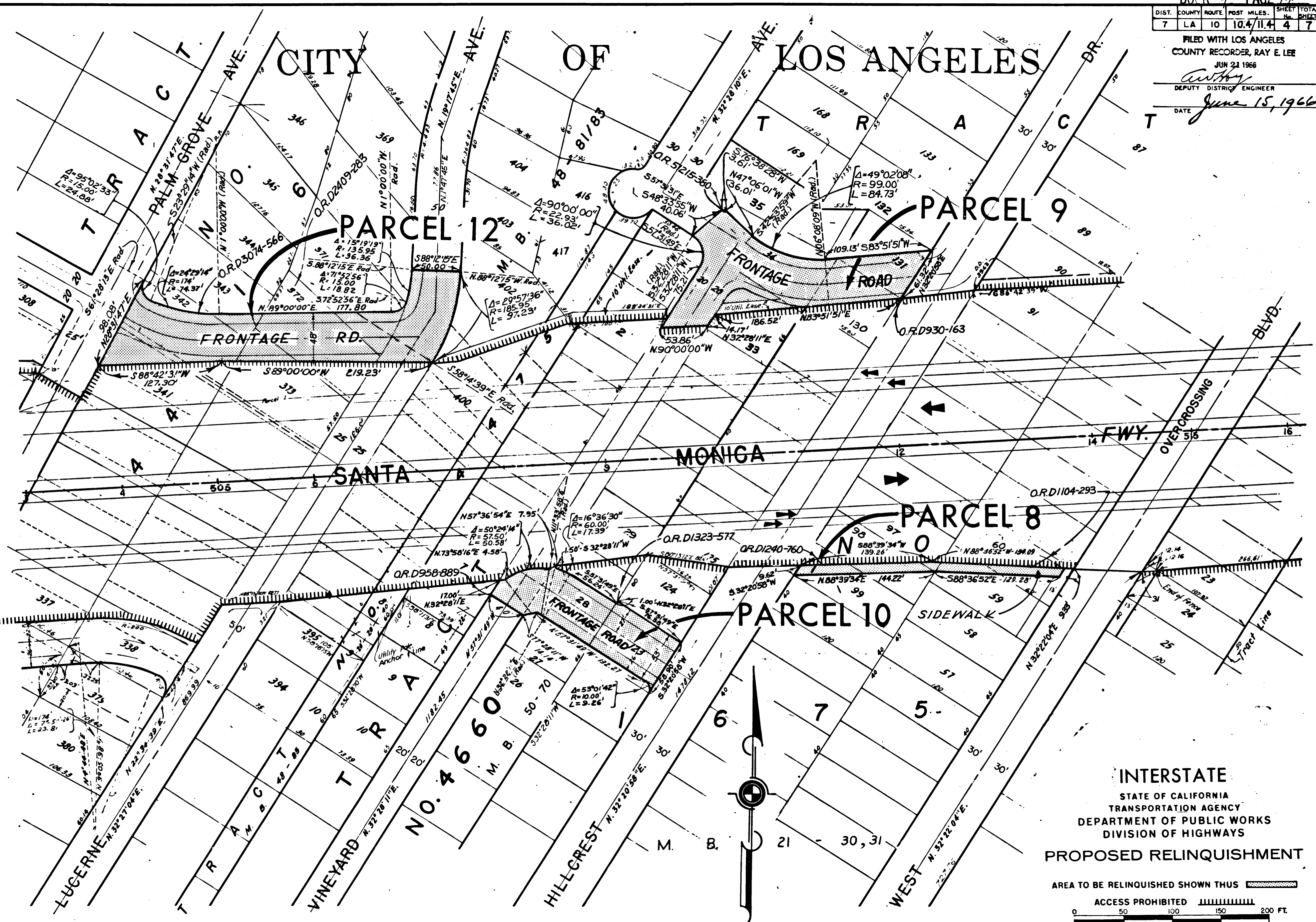
0 50 100 150 200 FT

DIST.	COUNTY	ROUTE	POST MILES	SHEET No.	TOTAL SHEETS
7	LA	10	10.4/11.4	4	7

FILED WITH LOS ANGELES  
 COUNTY RECORDER, RAY E. LEE  
 JUN 21 1966

*Anthony*  
 DEPUTY DISTRICT ENGINEER  
 DATE June 15, 1966

# CITY OF LOS ANGELES



Revised 4/66

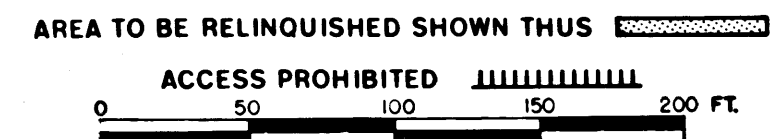
**REL- 465**  
 DRN BY W.F.S.  
 C.L.C. BY R.S.D.  
 CKD BY M.M.  
 BASE MAP NOS.  
 CCM 220.4

REF. MAP NOS.  
 F-2074

AS BUILT NOS.  
 148-4

**INTERSTATE**  
 STATE OF CALIFORNIA  
 TRANSPORTATION AGENCY  
 DEPARTMENT OF PUBLIC WORKS  
 DIVISION OF HIGHWAYS

**PROPOSED RELINQUISHMENT**



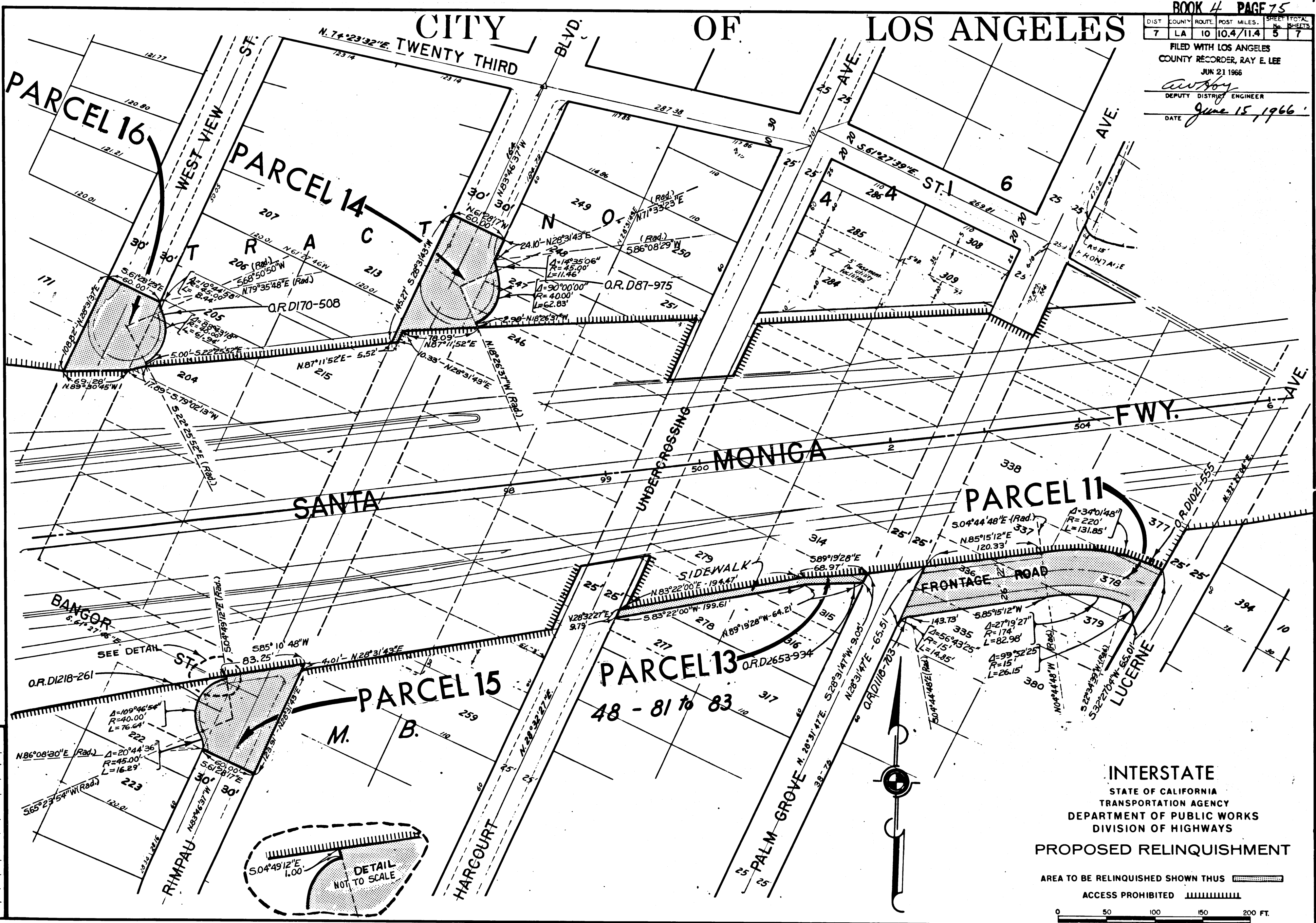
DIST	COUNTY	ROUTE	POST MILES	SHEET TOTAL
7	LA	10	10.4/11.4	5 7

FILED WITH LOS ANGELES  
COUNTY RECORDER, RAY E. LEE  
JUN 21 1966

*Anthony*  
DEPUTY DISTRICT ENGINEER

DATE June 15, 1966

# CITY OF LOS ANGELES



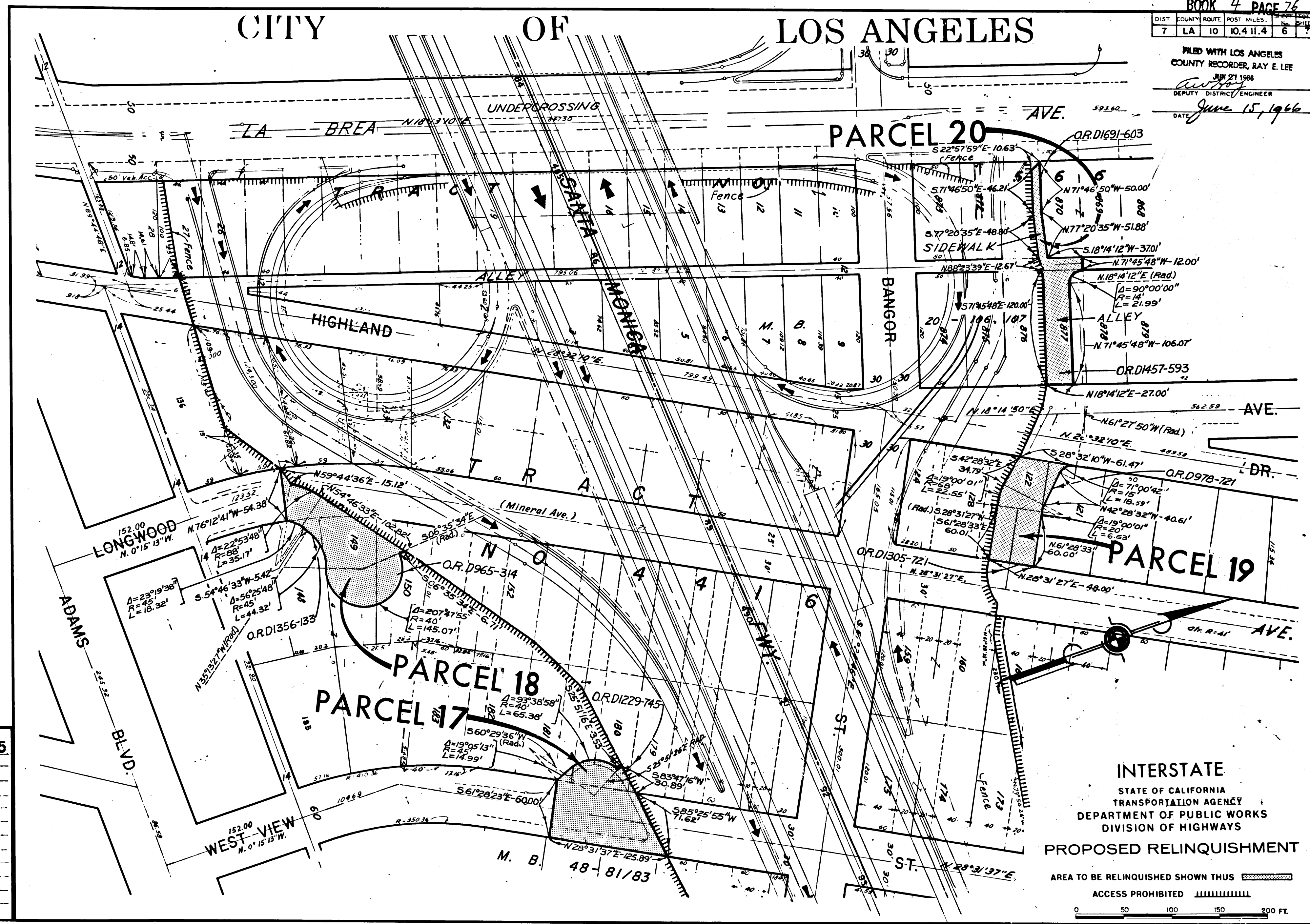
**REL- 465**  
 DWN BY W.F.S.  
 C.L.C BY R.S.D.  
 CKD BY M.M.  
 BASE MAP NO'S  
 F-2074  
 REF. MAP NO'S  
 C.G.M 220.3  
 AS BUILT NO'S  
 148-4

**INTERSTATE**  
 STATE OF CALIFORNIA  
 TRANSPORTATION AGENCY  
 DEPARTMENT OF PUBLIC WORKS  
 DIVISION OF HIGHWAYS  
**PROPOSED RELINQUISHMENT**  
 AREA TO BE RELINQUISHED SHOWN THUS [Hatched Box]  
 ACCESS PROHIBITED [Dashed Line]  
 0 50 100 150 200 FT.

# CITY OF LOS ANGELES

BOOK 4 PAGE 76					
DIST	COUNTY	ROUTE	POST MILES.	SHEET NO.	TOTAL SHEETS
7	LA	10	10.411.4	6	7

FILED WITH LOS ANGELES  
 COUNTY RECORDER, RAY E. LEE  
 JUN 21 1966  
 DEPUTY DISTRICT ENGINEER  
 DATE June 15, 1966



REL- 465  
 DRN BY W.F.S.  
 C.L.C. BY R.S.D.  
 CK'D BY M.M.  
 BASE MAP NOS.  
 F-2074  
 REF. MAP NOS.  
 C.C.M. 224  
 AS BUILT NOS.  
 148-4

**INTERSTATE**  
 STATE OF CALIFORNIA  
 TRANSPORTATION AGENCY  
 DEPARTMENT OF PUBLIC WORKS  
 DIVISION OF HIGHWAYS

**PROPOSED RELINQUISHMENT**

AREA TO BE RELINQUISHED SHOWN THUS   
 ACCESS PROHIBITED

0 50 100 150 200 FT.

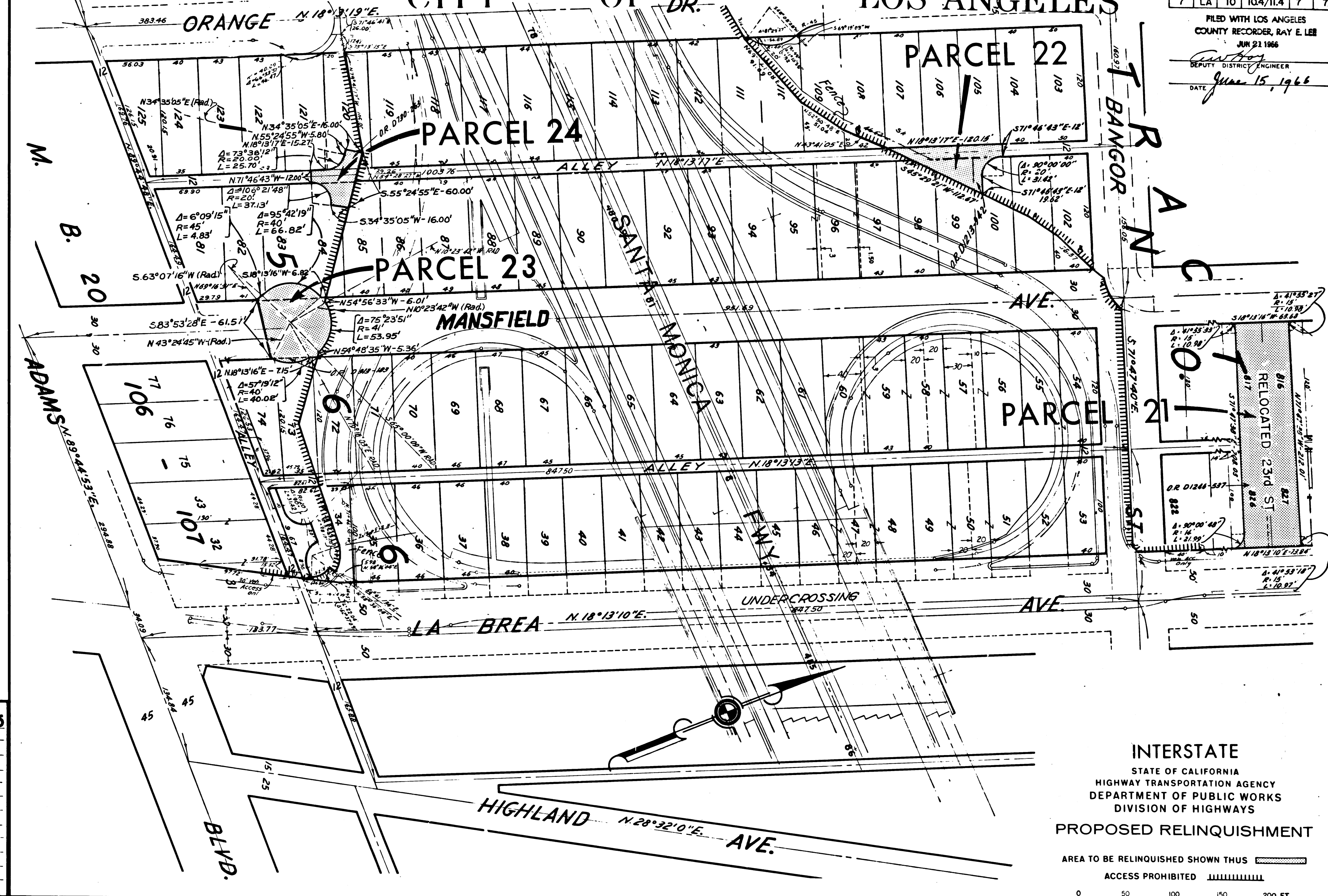
DIST.	COUNTY	ROUTE	POST MILES.	SHEET No.	TOTAL SHEETS
7	LA	10	104/11.4	7	7

FILED WITH LOS ANGELES  
COUNTY RECORDER, RAY E. LEE  
JUN 21 1966

DEPUTY DISTRICT ENGINEER

DATE June 15, 1966

# CITY OF DR. LOS ANGELES



REL- 465  
 DRN BY WFS  
 C/LC BY RSD  
 CK'D BY M.M.  
 BASE MAP NO'S  
 F-2074  
 REF. MAP NO'S  
 C.C.M. 220.3  
 AS BUILT NO'S  
 148-4

INTERSTATE  
 STATE OF CALIFORNIA  
 HIGHWAY TRANSPORTATION AGENCY  
 DEPARTMENT OF PUBLIC WORKS  
 DIVISION OF HIGHWAYS  
 PROPOSED RELINQUISHMENT  
 AREA TO BE RELINQUISHED SHOWN THUS   
 ACCESS PROHIBITED