

BOOK 4		PAGE 78	
DIST.	COUNTY	ROUTE	POST MILES.
7	LA	605	11.2/11.6
SHEET		TOTAL SHEETS	
1		3	

STATE OF CALIFORNIA  
HIGHWAY TRANSPORTATION AGENCY  
DEPARTMENT OF PUBLIC WORKS  
DIVISION OF HIGHWAYS

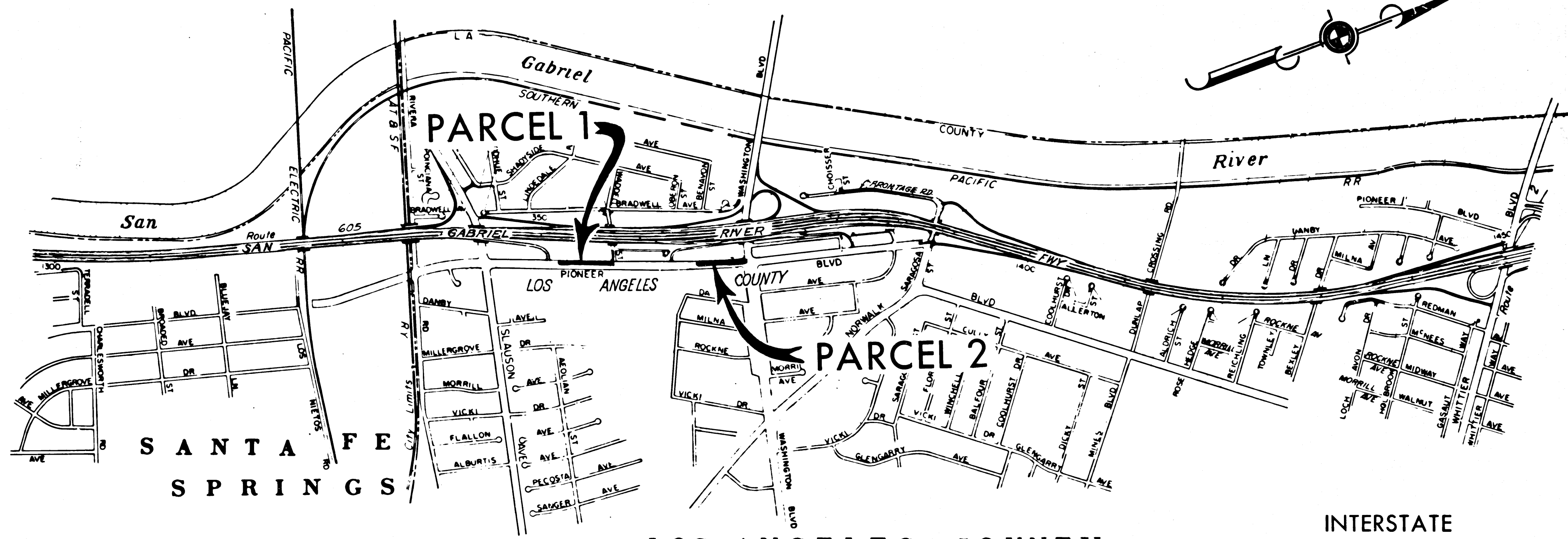
*C. W. H. H.*  
DEPUTY DISTRICT ENGINEER  
DATE June 21, 1966

RIGHT OF WAY MAPS OF  
**STATE HIGHWAY**

1507  
RECORDED  
AT REQUEST OF  
DEPT. OF PUBLIC WORKS  
JUNE 27, 1966  
BY 10  
PAST 8 A.M.  
BOOK 4  
PAGE 78  
OF STATE HIGHWAY MAPS  
LOS ANGELES COUNTY, CALIF.  
RAY E. LEE  
COUNTY RECORDER - FREE  
*L. B. D. J.*

In Los Angeles County between Slauson Ave and Washington Blvd.

P I C O R I V E R A



REL- 522  
DRN BY B.J.K.  
C.L.C. BY T.KERKER  
CRD BY M.M.  
BASE MAP NO'S  
F-1963  
REF MAP NO'S  
C.C.M. #208.7  
AS BUILT NO'S  
156-16

LOS ANGELES COUNTY



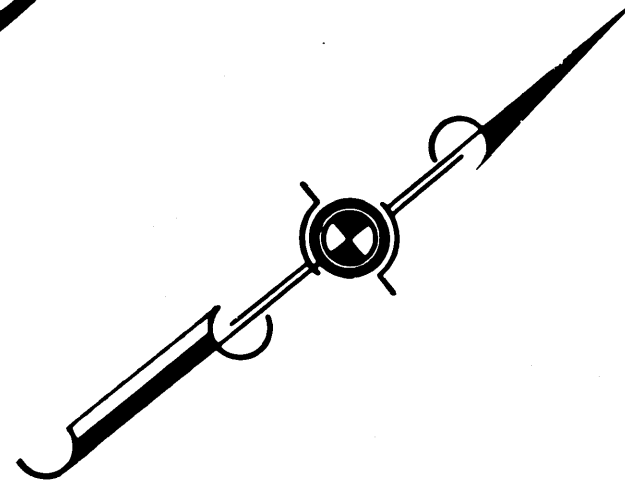
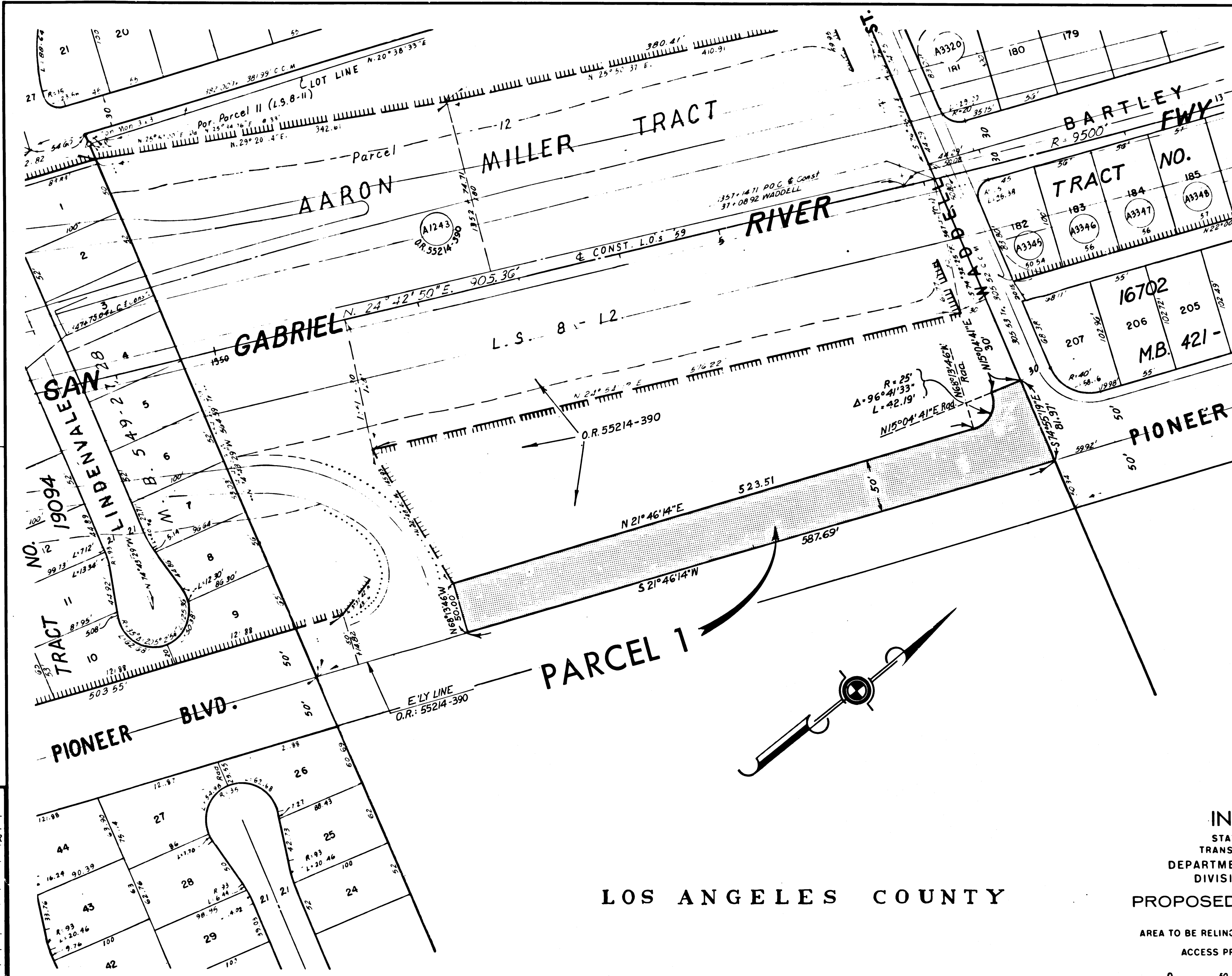
INTERSTATE  
STATE OF CALIFORNIA  
TRANSPORTATION AGENCY  
DEPARTMENT OF PUBLIC WORKS  
DIVISION OF HIGHWAYS  
PROPOSED RELINQUISHMENT

DIST	COUNTY	ROUTE	POST MILES	SHEET NO.	TOTAL SHEETS
7	L.A.	605	11.2/11.6	2	3

FILED WITH LOS ANGELES COUNTY RECORDER, RAY E. LEE JUN 27 1966

*Anthony*  
DEPUTY DISTRICT ENGINEER

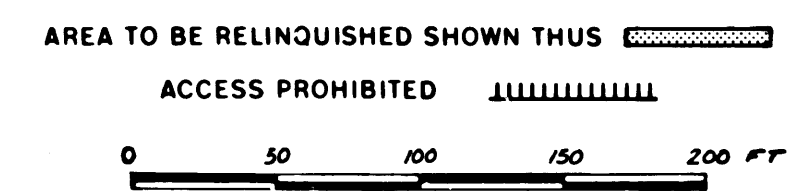
DATE June 21, 1966



REL-522  
 DRN BY B.J.K.  
 C.L.C. BY T.KERKER  
 CK'D BY M.M.  
 BASE MAP NOS. E-1963  
 REF. MAP NOS. C.C.M. # 208.7  
 AS BUILT NOS. 156-16

LOS ANGELES COUNTY

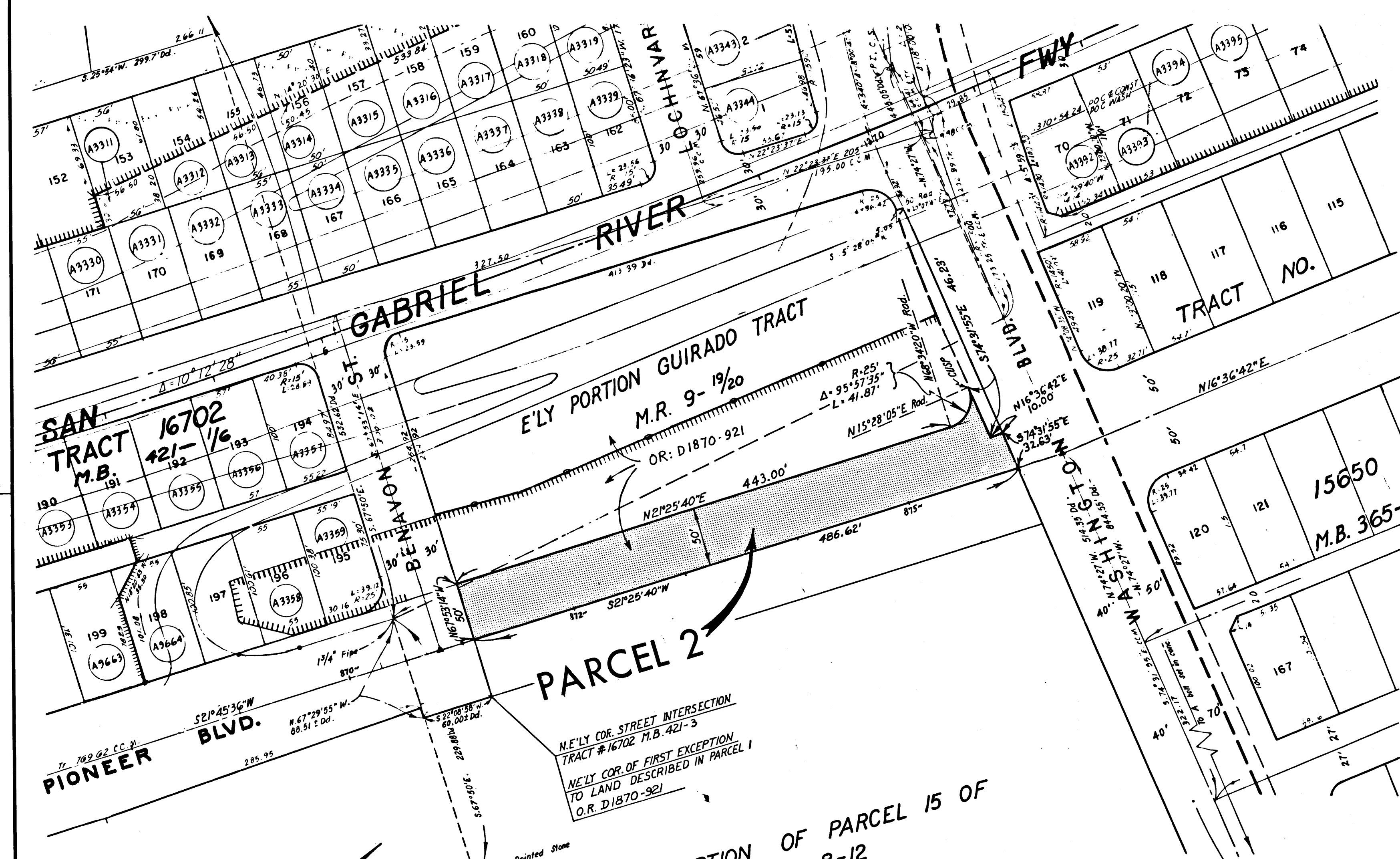
INTERSTATE  
 STATE OF CALIFORNIA  
 TRANSPORTATION AGENCY  
 DEPARTMENT OF PUBLIC WORKS  
 DIVISION OF HIGHWAYS  
 PROPOSED RELINQUISHMENT



DIST.	COUNTY	ROUTE	POST MILES	SHEET NO.	TOTAL SHEETS
7	LA	605	11.2/11.6	3	3

FILED WITH LOS ANGELES  
 COUNTY RECORDER, RAY E. LEE  
 JUN 27 1966

*Anthony*  
 DEPUTY DISTRICT ENGINEER  
 DATE June 21, 1966



**SAN TRACT**  
 M.B. 421-1/6  
 16702

**E'LY PORTION GUIRADO TRACT**  
 M.R. 9-19/20

**PARCEL 2**

PORTION OF PARCEL 15 OF  
 L.S. 8-12



**TRACT NO.**

15650  
 M.B. 365-23/28

REL- 522  
 DRN BY B. J. K.  
 C.L.C. BY T. KERKER  
 CKD BY M. M.  
 BASE MAP NOS. E-1963  
 REF. MAP NOS. CCM. # 208.7  
 AS BUILT NOS. 156-16

LOS ANGELES COUNTY

**INTERSTATE**  
 STATE OF CALIFORNIA  
 TRANSPORTATION AGENCY  
 DEPARTMENT OF PUBLIC WORKS  
 DIVISION OF HIGHWAYS  
**PROPOSED RELINQUISHMENT**

AREA TO BE RELINQUISHED SHOWN THUS   
 ACCESS PROHIBITED   
 0 50 100 150 200