

DIST.	COUNTY	ROUTE	POST MILES.	SHEET No.	TOTAL SHEETS
7	L.A.	10	11.0	1	2

STATE OF CALIFORNIA
 TRANSPORTATION AGENCY
 DEPARTMENT OF PUBLIC WORKS
 DIVISION OF HIGHWAYS

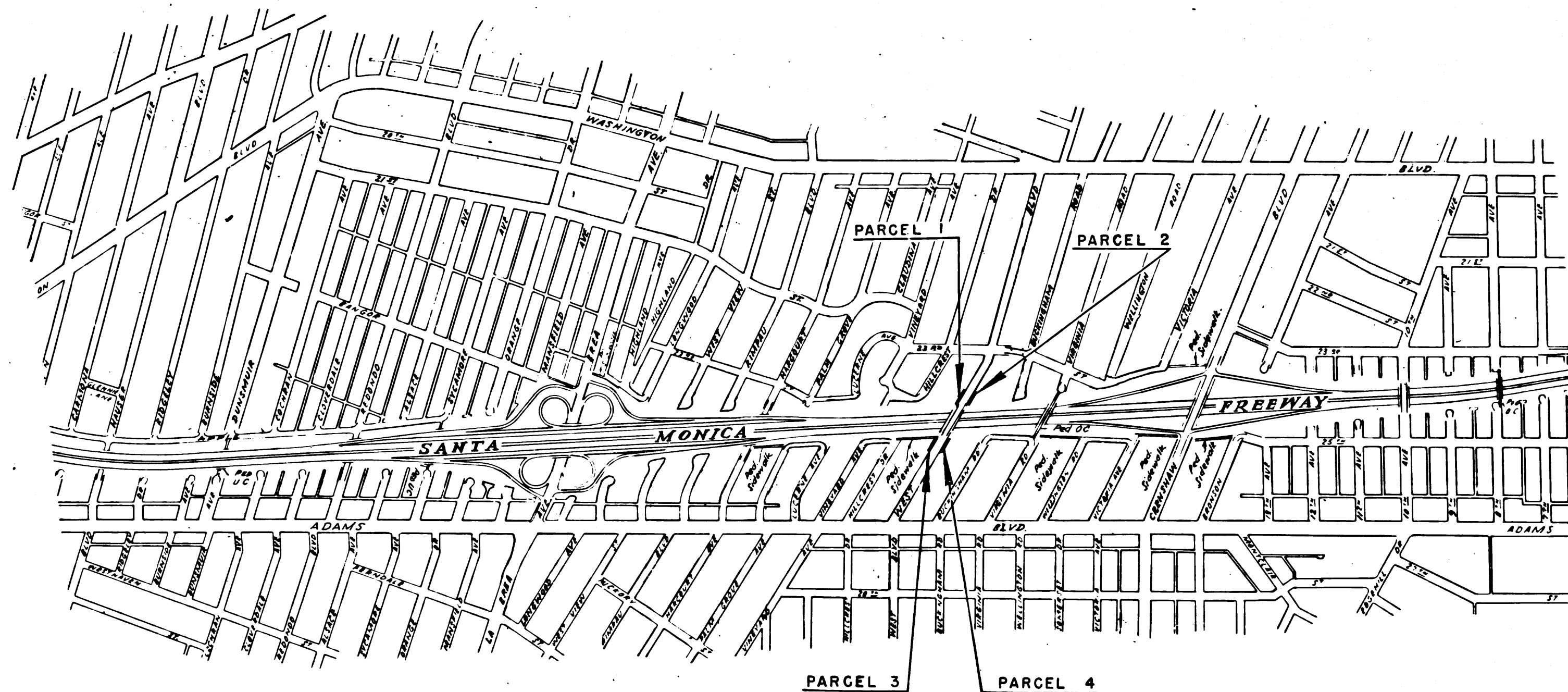
C. W. Hoyle
 DEPUTY DISTRICT ENGINEER
 JUNE 30, 1966
 DATE

2036

RECORDED
 AT REQUEST OF
 DEPT. OF PUBLIC WORKS
 JULY 8, 1966
 22 PAST 9 A.M.

IN BOOK 4
 AT PAGE 82
 OF STATE HIGHWAY MAPS
 LOS ANGELES COUNTY, CALIF.
 RAY E. LEE
 COUNTY RECORDER
 BY *[Signature]* Deputy

RIGHT OF WAY MAPS OF
STATE HIGHWAY
 In City of Los Angeles at West Boulevard.



INTERSTATE
 STATE OF CALIFORNIA
 TRANSPORTATION AGENCY
 DEPARTMENT OF PUBLIC WORKS
 DIVISION OF HIGHWAYS
 PROPOSED RELINQUISHMENT

AREA TO BE RELINQUISHED SHOWN THUS



CITY OF LOS ANGELES

REL-536

DRN BY *R.S.D.*
 C.L.C. BY *R.S.D.*
 CK'D BY *G.W.*
 BASE MAP NOS.
 CCM 220.4

REF. MAP NOS.
 F-2074

AS BUILT NOS.
 148-4

P 22

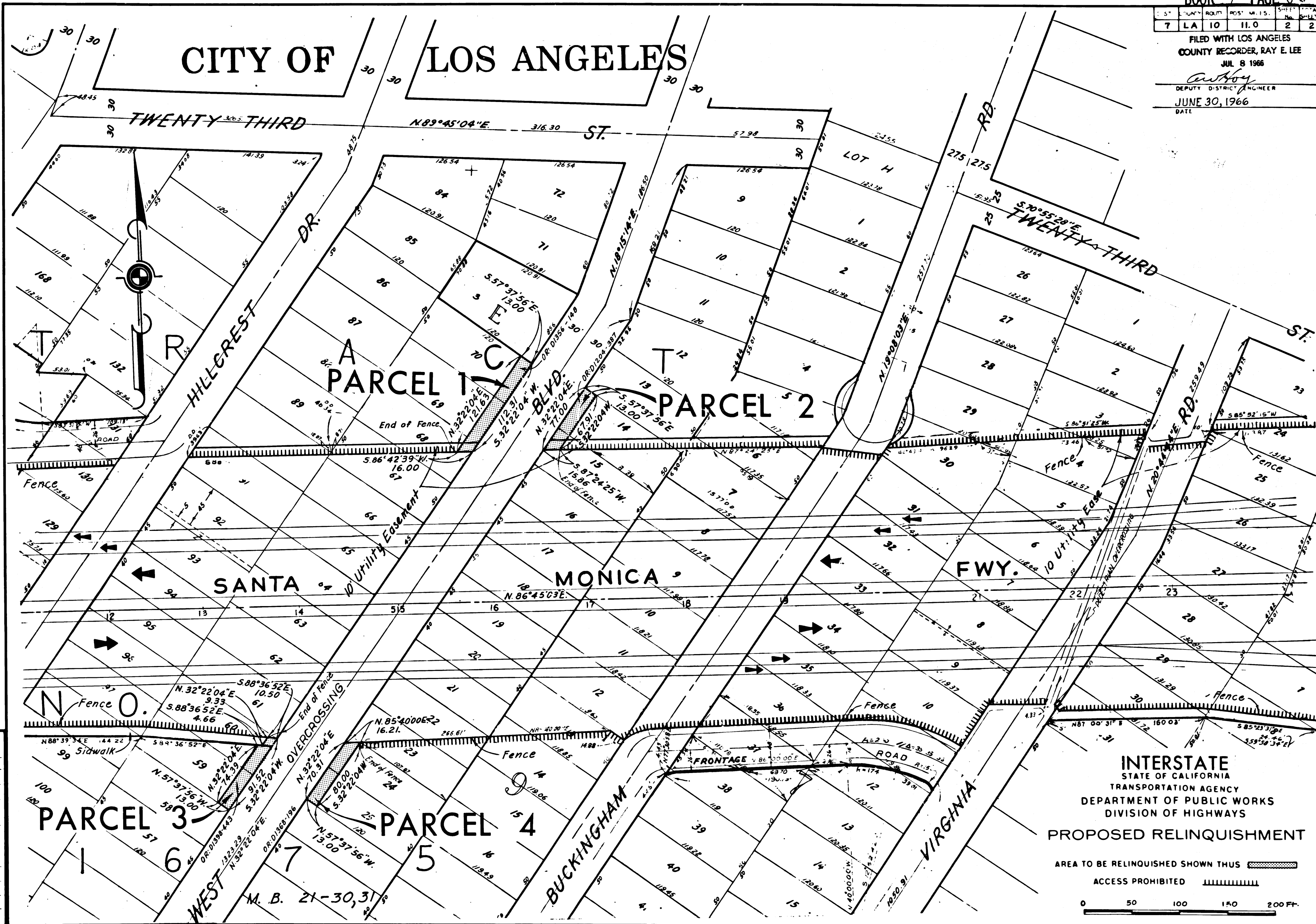
4/12-13

S. 7	T. 10 N.	R. 10 E.	W. 1 S.	SHEET NO.	TOTAL SHEETS
7	LA 10	11.0	2	2	2

FILED WITH LOS ANGELES
 COUNTY RECORDER, RAY E. LEE
 JUL 8 1966

Anthony
 DEPUTY DISTRICT ENGINEER

JUNE 30, 1966
 DATE





REL-536

DRN BY R.C.
 C.L.C. BY R.S.D.
 CK'D BY G.W.
 BASE MAP NO'S
 C.C.M. 220.4

REF. MAP NOS
 F-2074

AS BUILT NO'S
 148-4

INTERSTATE
 STATE OF CALIFORNIA
 TRANSPORTATION AGENCY
 DEPARTMENT OF PUBLIC WORKS
 DIVISION OF HIGHWAYS
 PROPOSED RELINQUISHMENT

AREA TO BE RELINQUISHED SHOWN THUS 
 ACCESS PROHIBITED 
 0 50 100 150 200 FT.