

DIST.	COUNTY	ROUTE	POST MILES.	SHEET NO.	TOTAL SHEETS
7	L.A.	5	85.8/88.7	1	9

STATE OF CALIFORNIA
TRANSPORTATION AGENCY
DEPARTMENT OF PUBLIC WORKS
DIVISION OF HIGHWAYS

C. W. Hoy
DEPUTY DISTRICT ENGINEER
DATE 10-21-66

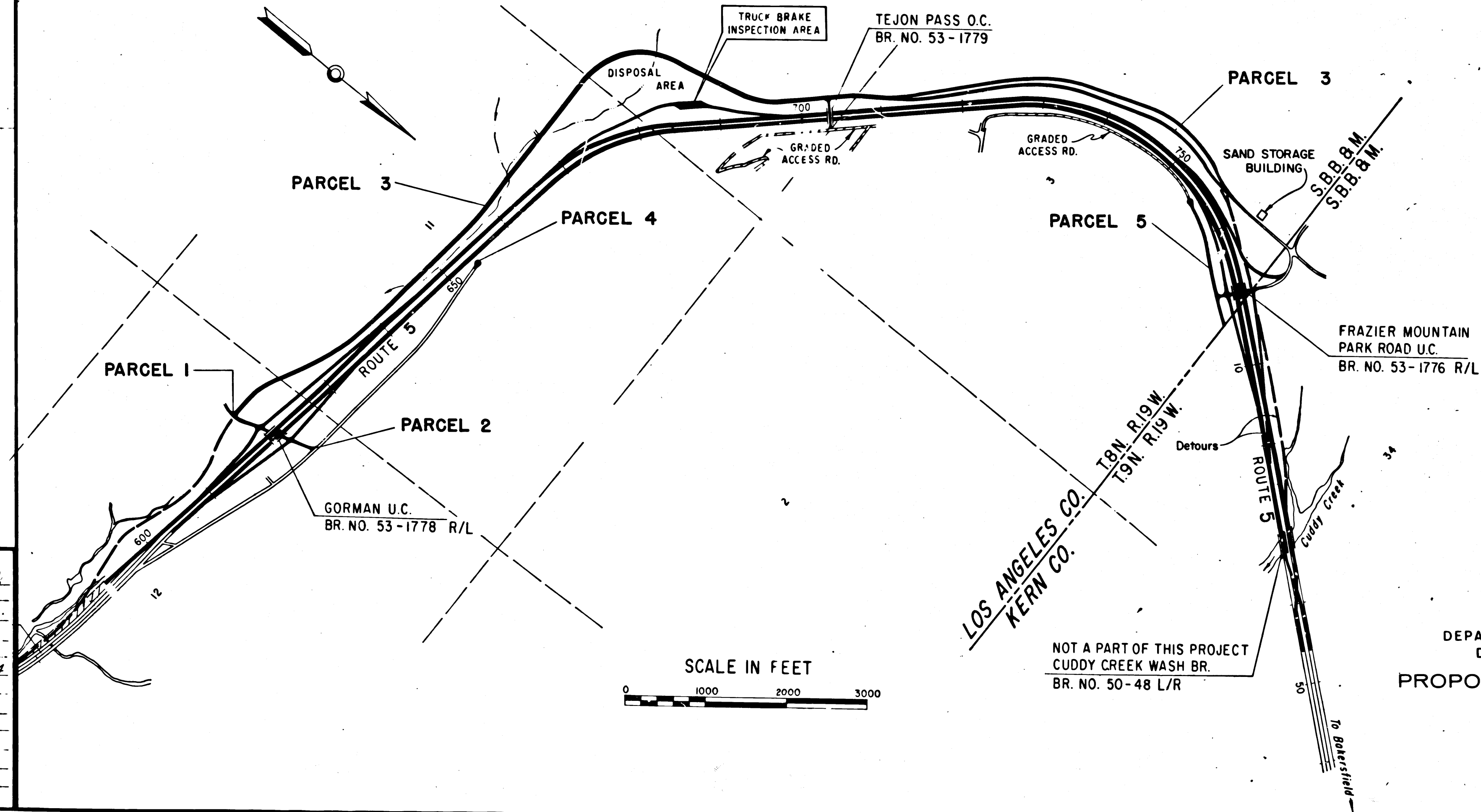
RIGHT OF WAY MAPS OF
STATE HIGHWAY

In Los Angeles County on Route 5 between
Gorman U.C. and Kern County Line

2417

RECORDED
AT REQUEST OF
DEPT. OF PUBLIC WORKS
OCT. 28, 1966
4:40 P.M.
10 PAST 10 A.M.

IN BOOK 5
AT PAGE 2
OF STATE HIGHWAY MAPS
OF LOS ANGELES COUNTY, CALIF.
RAY E. LEE
COUNTY RECORDER
BY *[Signature]* DEPUTY
FREE



REL-542

DRN BY J.E.F.
C.L.C BY J.E.F.
CK'D BY M.M.
BASE MAP NO'S
E-1323 & F-1324

REF. MAP NO'S
C.C.M. 31

AS BUILT NO'S
164-15

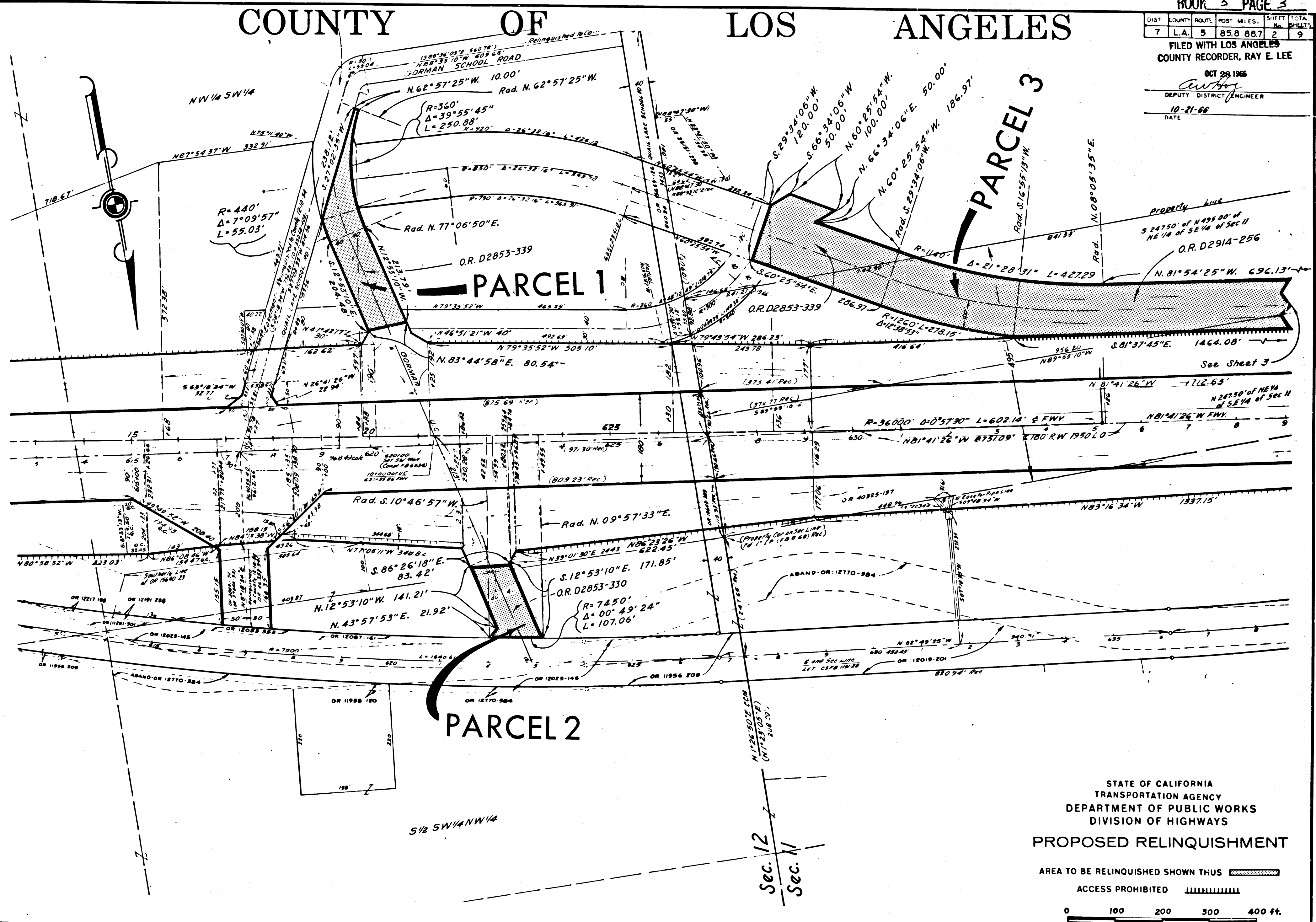
STATE OF CALIFORNIA
TRANSPORTATION AGENCY
DEPARTMENT OF PUBLIC WORKS
DIVISION OF HIGHWAYS
PROPOSED RELINQUISHMENT

COUNTY OF LOS ANGELES

DIST	COUNTY	ROUTE	POST MILES	SHEET NO.	TOTAL SHEETS
7	L.A.	5	85.8 88.7	2	9

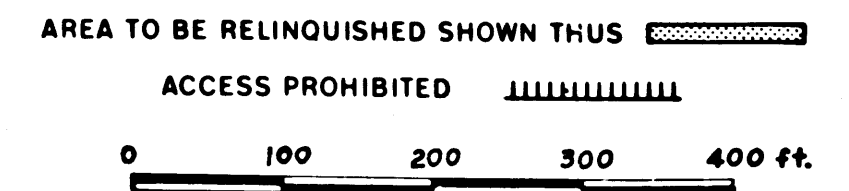
FILED WITH LOS ANGELES COUNTY RECORDER, RAY E. LEE

OCT 28 1966
 DEPUTY DISTRICT ENGINEER
 DATE 10-21-66



REL-542
 DRN BY J.F.F.
 C.L.C. BY J.F.F.
 CKD BY M.M.
 BASE MAP NOS.
 F-1323 & F-1324
 REF. MAP NOS.
 C.C.M. 31
 AS BUILT NO'S
 164-15

STATE OF CALIFORNIA
 TRANSPORTATION AGENCY
 DEPARTMENT OF PUBLIC WORKS
 DIVISION OF HIGHWAYS
PROPOSED RELINQUISHMENT

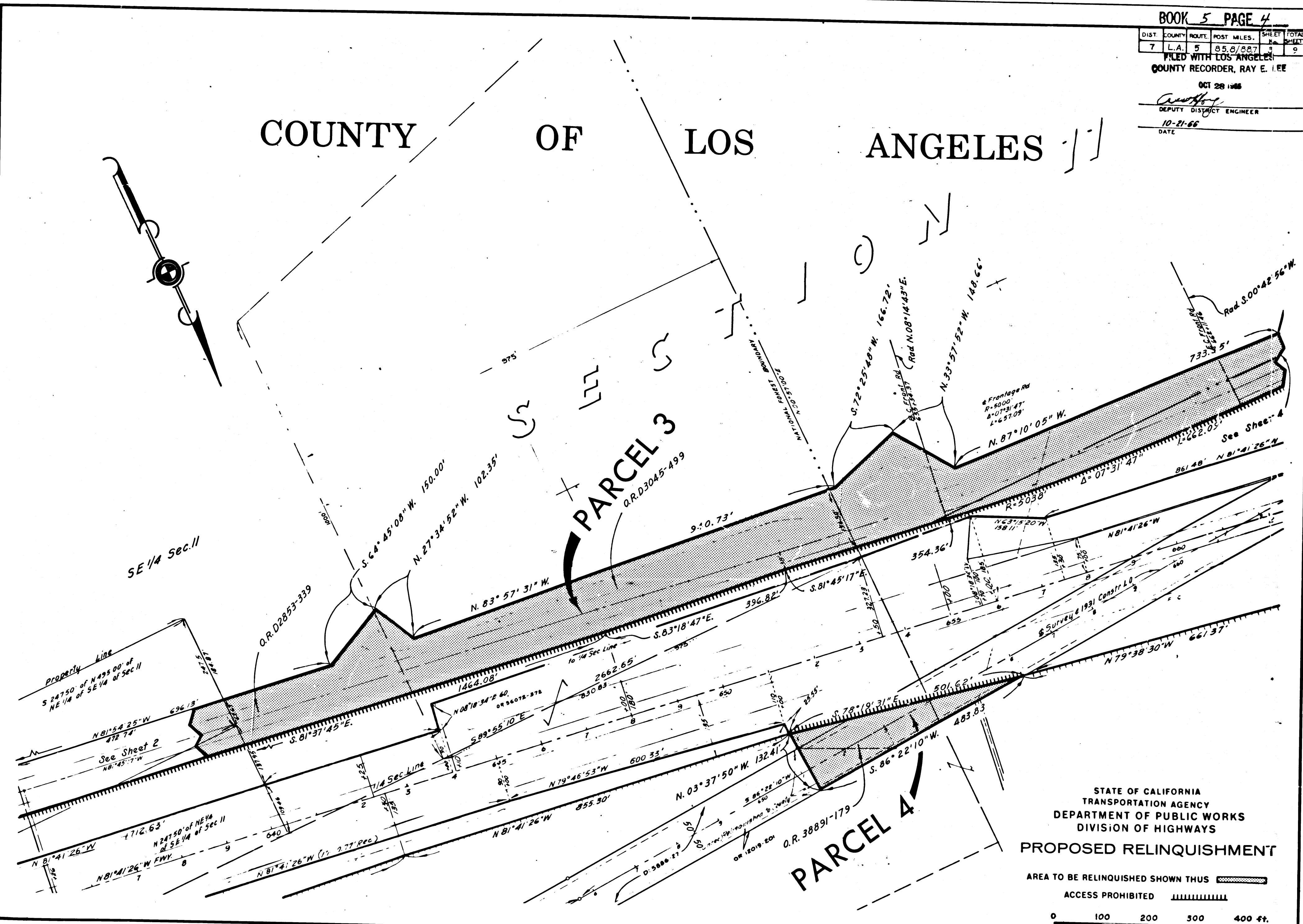
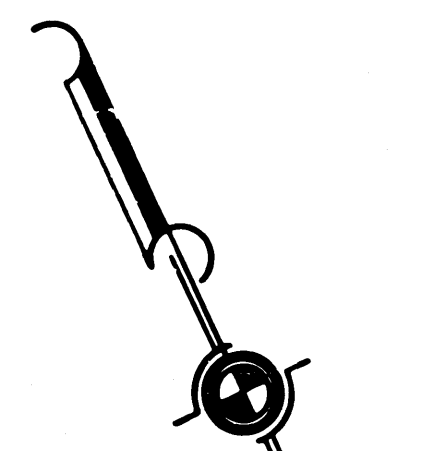


DIST.	COUNTY	ROUTE	POST MILES.	SHEET No.	TOTAL SHEETS
7	L.A.	5	85.8/887	3	9

FILED WITH LOS ANGELES COUNTY RECORDER, RAY E. LEE

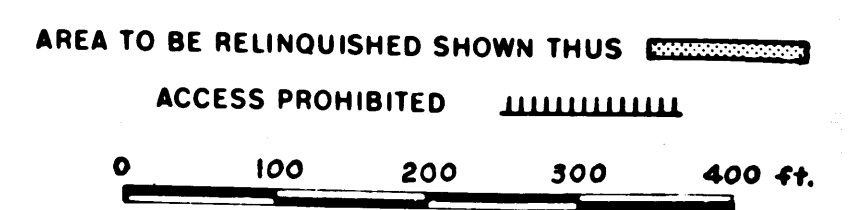
OCT 28 1966
Anthony
 DEPUTY DISTRICT ENGINEER
 10-21-66
 DATE

COUNTY OF LOS ANGELES



REL-542
 DRN BY J.F.F.
 C/LC BY J.F.F.
 CK'D BY M.M.
 BASE MAP NO'S
 F-1323 & F-1324
 REF. MAP NO'S
 C.C.M. 31
 AS BUILT NO'S
 164-15

STATE OF CALIFORNIA
 TRANSPORTATION AGENCY
 DEPARTMENT OF PUBLIC WORKS
 DIVISION OF HIGHWAYS
PROPOSED RELINQUISHMENT



COUNTY OF LOS ANGELES

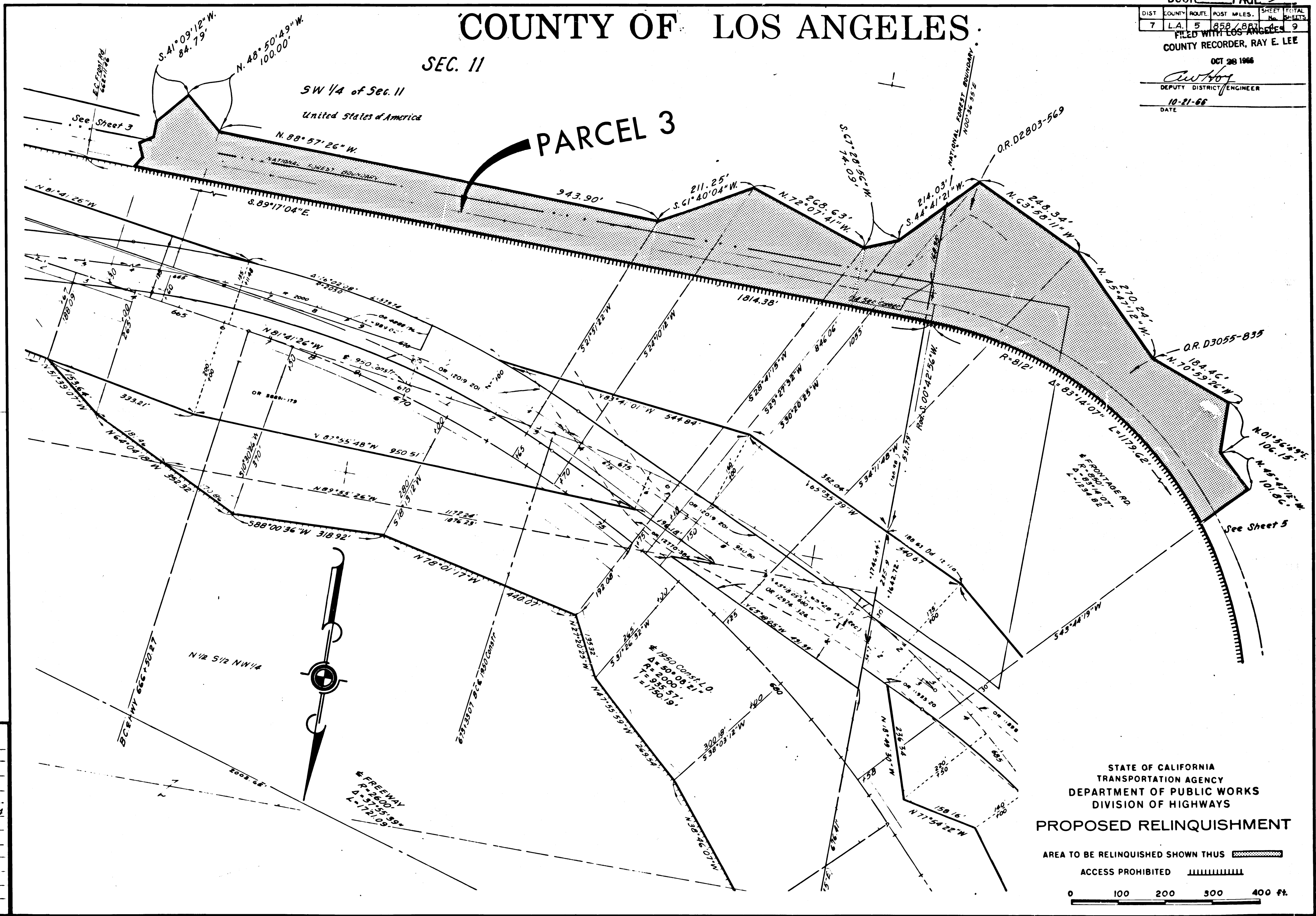
DIST	COUNTY	ROUTE	POST MILES	SHEET No.	TOTAL SHEETS
7	L.A.	5	858/861	9	9

FILED WITH LOS ANGELES 9
 COUNTY RECORDER, RAY E. LEE
 OCT 28 1966
C. W. Hoyle
 DEPUTY DISTRICT ENGINEER
 10-21-66
 DATE



SEC. 11

SW 1/4 of Sec. 11
United States of America

PARCEL 3



REL-542
 DRN BY J.F.F.
 C'LC BY J.F.F.
 CK'D BY M.M.
 BASE MAP NO'S
 E-1323 & F-1324
 REF. MAP NOS.
 C.C.M. 31
 AS BUILT NO'S
 164-15

STATE OF CALIFORNIA
 TRANSPORTATION AGENCY
 DEPARTMENT OF PUBLIC WORKS
 DIVISION OF HIGHWAYS
PROPOSED RELINQUISHMENT
 AREA TO BE RELINQUISHED SHOWN THUS 
 ACCESS PROHIBITED 
 0 100 200 300 400 ft.

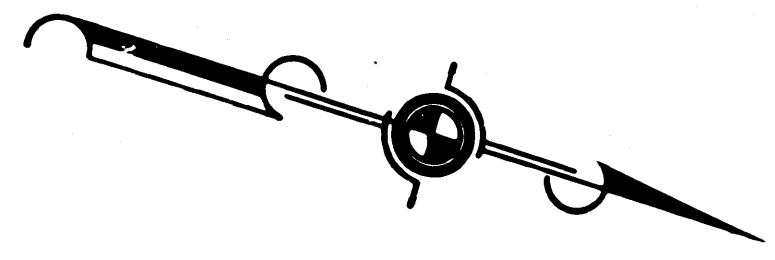
DIST.	COUNTY	ROUTE	POST MILES.	SHEET NO.	TOTAL SHEETS
7	L.A.	5	85.8/88.7	5	9

FILED WITH LOS ANGELES COUNTY RECORDER, RAY E. LEE

OCT 26 1966

DEPUTY DISTRICT ENGINEER

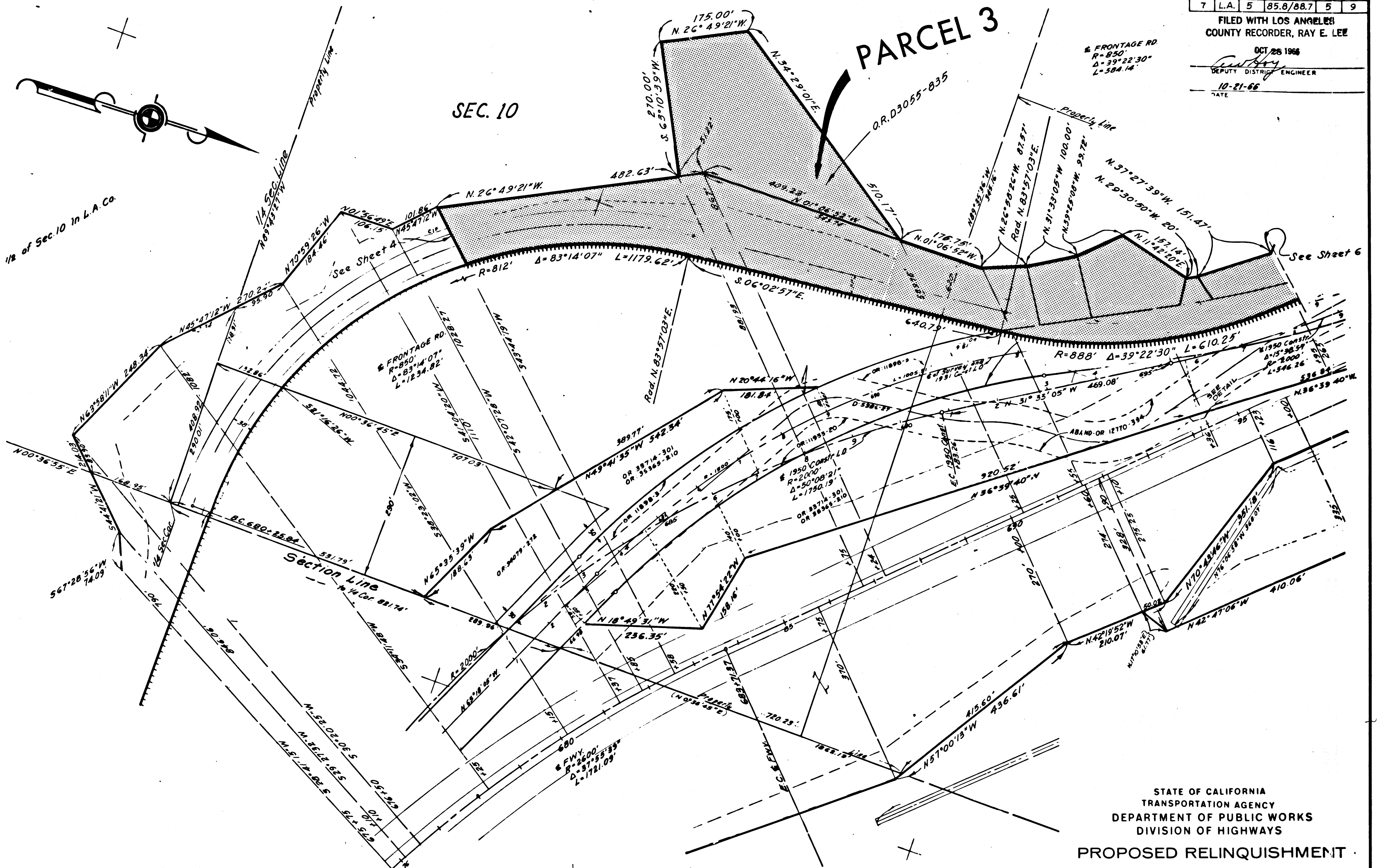
10-21-66 DATE



1/2 of Sec. 10 in L.A. Co.

SEC. 10

PARCEL 3



COUNTY OF LOS ANGELES

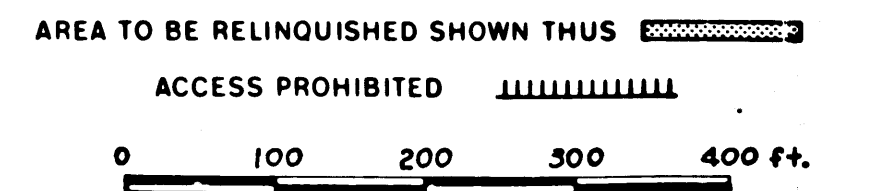
REL-542

DRN BY J.F.F.
 C'L.C BY J.F.F.
 C'KD BY M.M.
 BASE MAP NO'S
 F-1323 & F-1324

REF. MAP NO'S
 C.C.M. 31

AS BUILT NO'S
 164-15

STATE OF CALIFORNIA
 TRANSPORTATION AGENCY
 DEPARTMENT OF PUBLIC WORKS
 DIVISION OF HIGHWAYS
 PROPOSED RELINQUISHMENT



DIST	COUNTY	ROUTE	POST MILES.	SHEET TOTAL
7	L.A.	5	85.8/88.7	6 9

FILED WITH LOS ANGELES COUNTY RECORDER, RAY E. LEE

OCT 28 1966

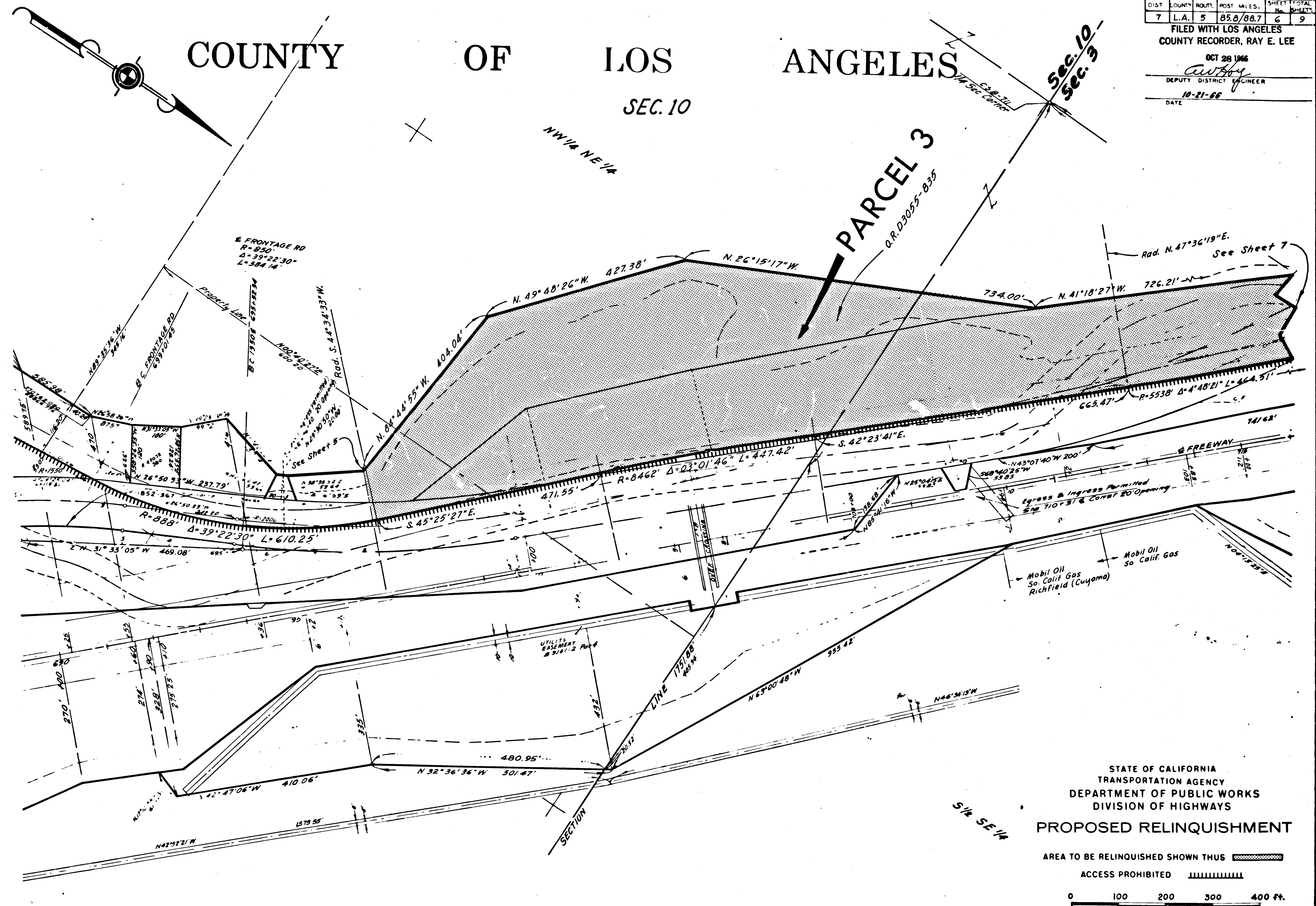
C. W. ...
DEPUTY DISTRICT ENGINEER

10-21-66
DATE

COUNTY OF LOS ANGELES

SEC. 10

PARCEL 3
O.R. D30955-835



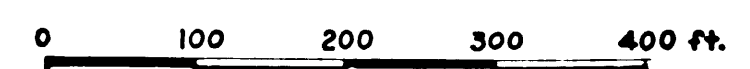
REL-542
 DRN BY J.F.F.
 C.L.C. BY J.F.F.
 CK'D BY M.M.
 BASE MAP NO'S
 F-1323 & F-1324
 REF. MAP NO'S
 C.C.M. 31
 AS BUILT NO'S
 164-15

STATE OF CALIFORNIA
 TRANSPORTATION AGENCY
 DEPARTMENT OF PUBLIC WORKS
 DIVISION OF HIGHWAYS

PROPOSED RELINQUISHMENT

AREA TO BE RELINQUISHED SHOWN THUS

ACCESS PROHIBITED



DIST.	COUNTY	ROUTE	POST MILES	SHEET TOTAL
7	L.A.	5	85.8/88.7	7 9

FILED WITH LOS ANGELES COUNTY RECORDER, RAY E. LEE

OCT 28 1966

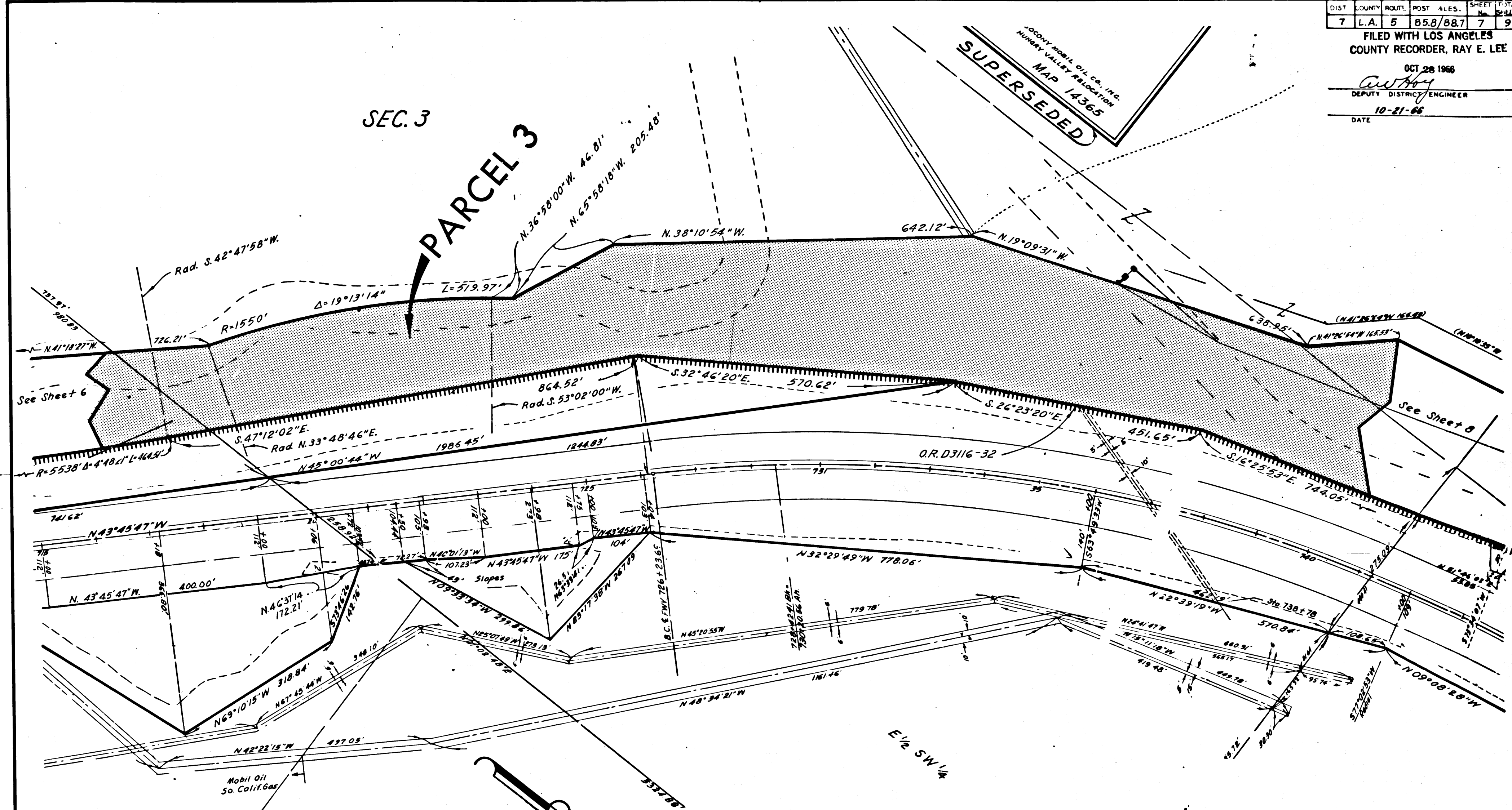
DEPUTY DISTRICT ENGINEER

DATE 10-21-66

SUPERSEDED
JOHN MOBIL OIL CO., INC.
HUNTER VALLEY RELOCATION
MAP 14365

SEC. 3

PARCEL 3



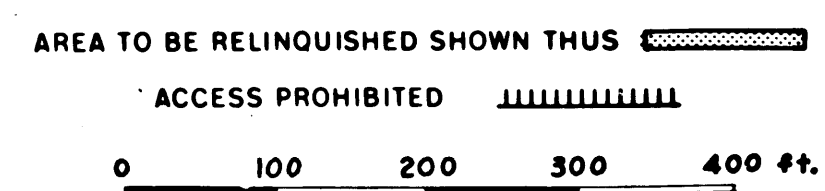
See Sheet 6

See Sheet 8

COUNTY OF LOS ANGELES

REL-542
 DRN BY J.F.F.
 C.L.C. BY J.F.F.
 CK'D BY M.M.
 BASE MAP NO'S...
 F-1323 & F-1324
 REF. MAP NO'S...
 C.C.M. 31
 AS BUILT NO'S...
 164-15

STATE OF CALIFORNIA
 TRANSPORTATION AGENCY
 DEPARTMENT OF PUBLIC WORKS
 DIVISION OF HIGHWAYS
PROPOSED RELINQUISHMENT



COUNTY OF LOS ANGELES

BOOK 5 PAGE 9

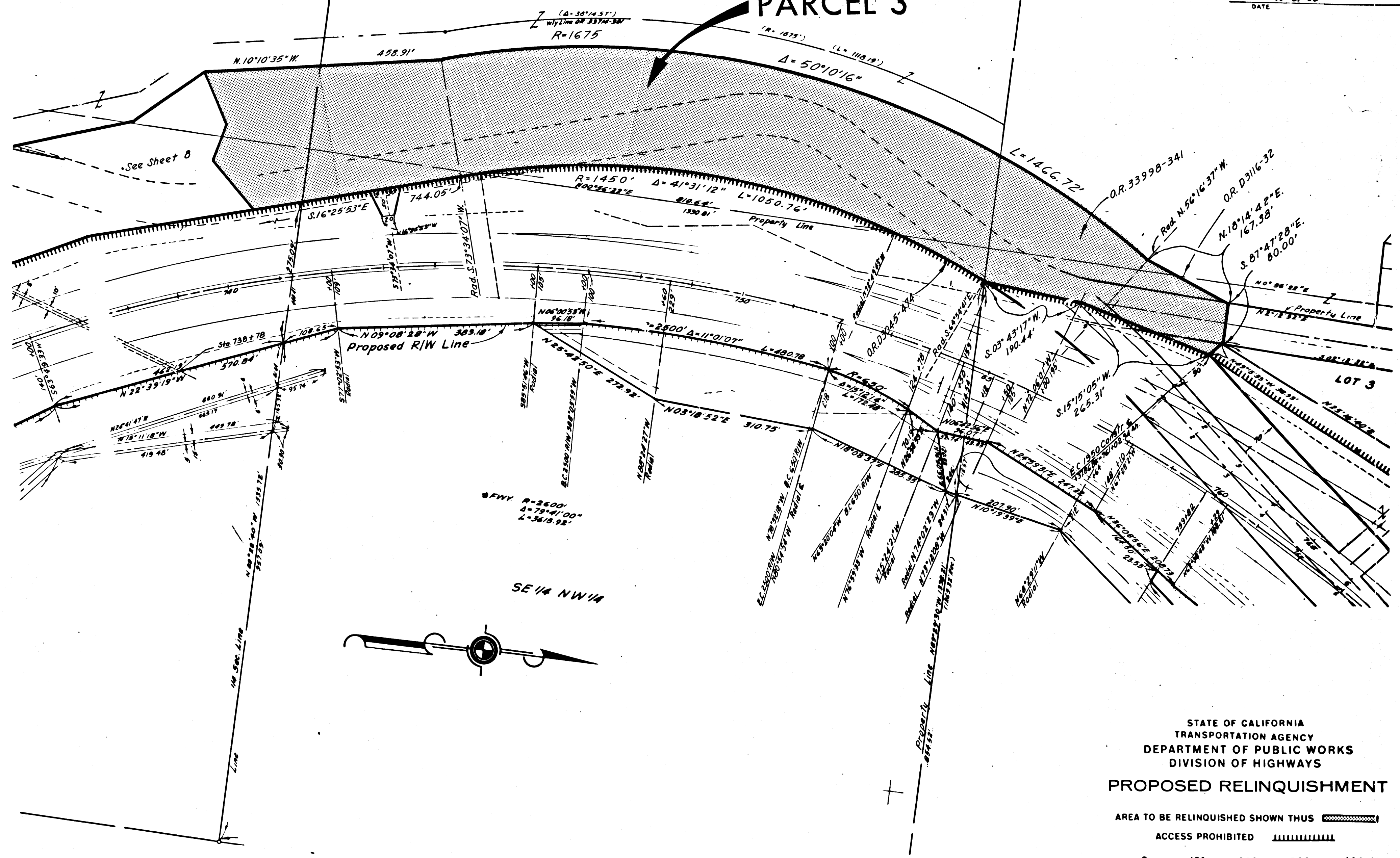
DIST	COUNTY	ROUTE	POST MILES.	SHEET NO.	TOTAL SHEETS
7	L.A.	5	85.8/88.7	3	9

FILED WITH LOS ANGELES COUNTY RECORDER, RAY E. LEE

OCT 28 1966
C. W. Boy
 DEPUTY DISTRICT ENGINEER
 DATE 10-21-66

PARCEL 3

NW 1/4 SW 1/4 of Sec. 3 in L.A. Co.



REL-542

DRN BY J.F.F.
 C'LC BY J.F.F.
 CK'D BY M.M.
 BASE MAP NO'S
 F-1323 & F-1324

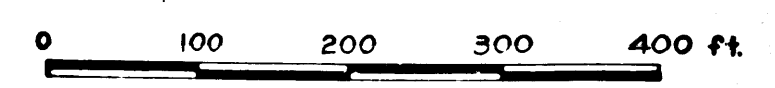
REF. MAP NO'S
 C.C.M. 31

AS BUILT NO'S
 164-15

STATE OF CALIFORNIA
 TRANSPORTATION AGENCY
 DEPARTMENT OF PUBLIC WORKS
 DIVISION OF HIGHWAYS

PROPOSED RELINQUISHMENT

AREA TO BE RELINQUISHED SHOWN THUS 
 ACCESS PROHIBITED 



COUNTY OF LOS ANGELES

BOOK 5 PAGE 10

DIST	COUNTY	ROUTE	POST MILES	SHEET	TOTAL SHEETS
7	L.A.	5	85.8/88.7	9	9

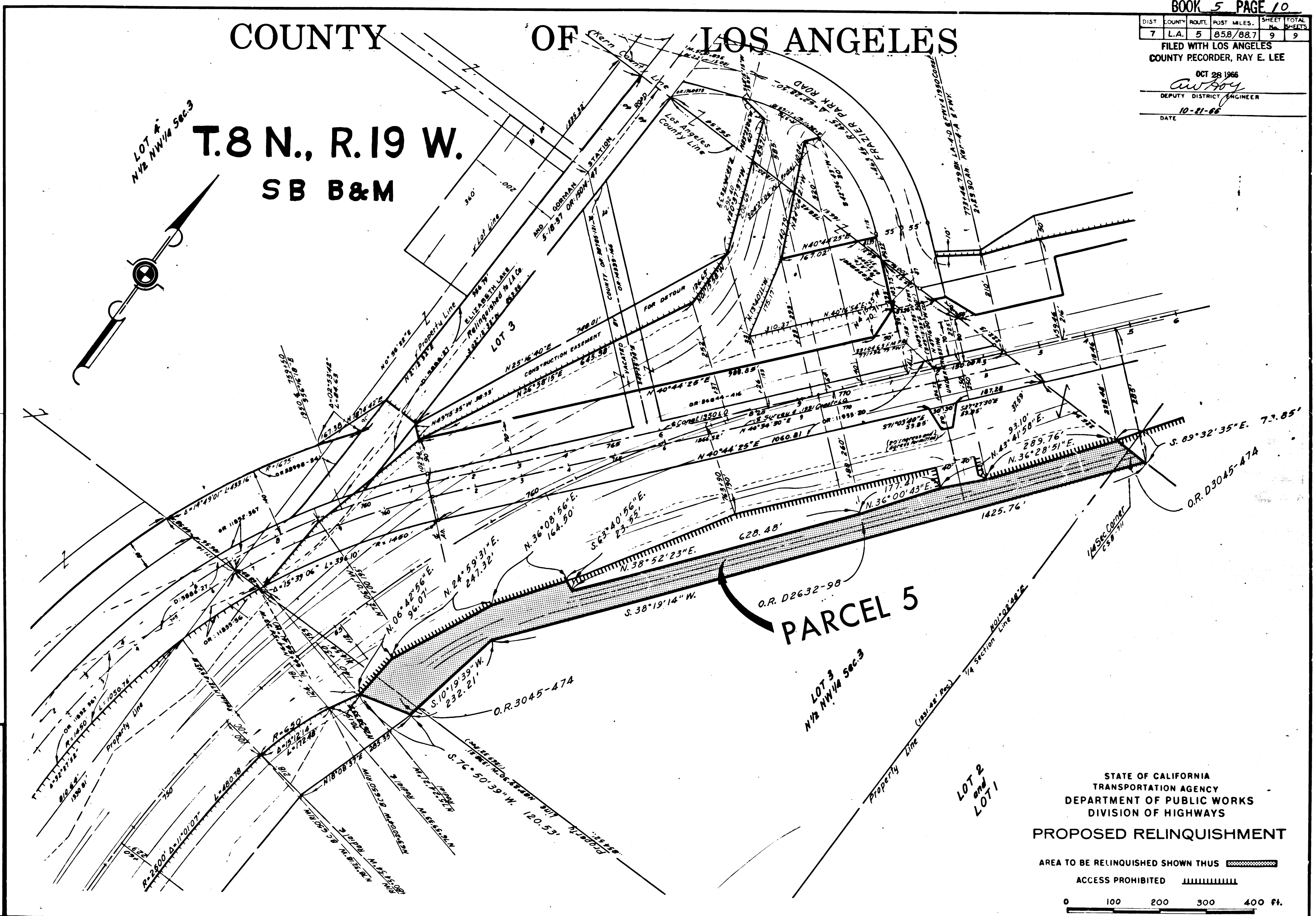
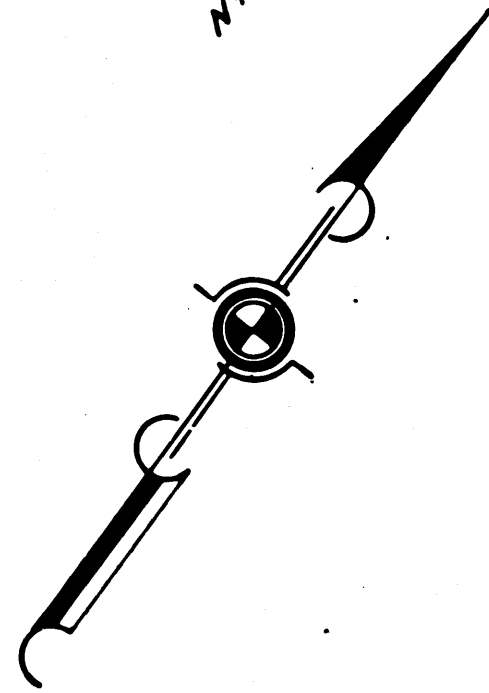
FILED WITH LOS ANGELES
COUNTY RECORDER, RAY E. LEE

OCT 28 1966
awhoy
DEPUTY DISTRICT ENGINEER

10-21-66
DATE

LOT 4
NW 1/4 Sec 3

T.8 N., R.19 W.
SB B&M



REL-542

ORN BY J.F.F.

C/LC BY J.F.F.

C/K'D BY M.M.

BASE MAP NO'S

E-1323 & F-1324

REF. MAP NO'S

C.C.M. 31

AS BUILT NO'S

164-15

STATE OF CALIFORNIA
TRANSPORTATION AGENCY
DEPARTMENT OF PUBLIC WORKS
DIVISION OF HIGHWAYS
PROPOSED RELINQUISHMENT

AREA TO BE RELINQUISHED SHOWN THUS

ACCESS PROHIBITED

0 100 200 300 400 FT.