

DIST	COUNTY	ROUTE	POST MILES	SHEET No.	TOTAL SHEETS
7	L.A.	42	18.8/21.5	1	4

FILED WITH LOS ANGELES COUNTY RECORDER, RAY E. LEE

NOV 16 1966

Ray E. Lee
 DEPUTY DISTRICT ENGINEER
 NOV 16 1966
 DATE

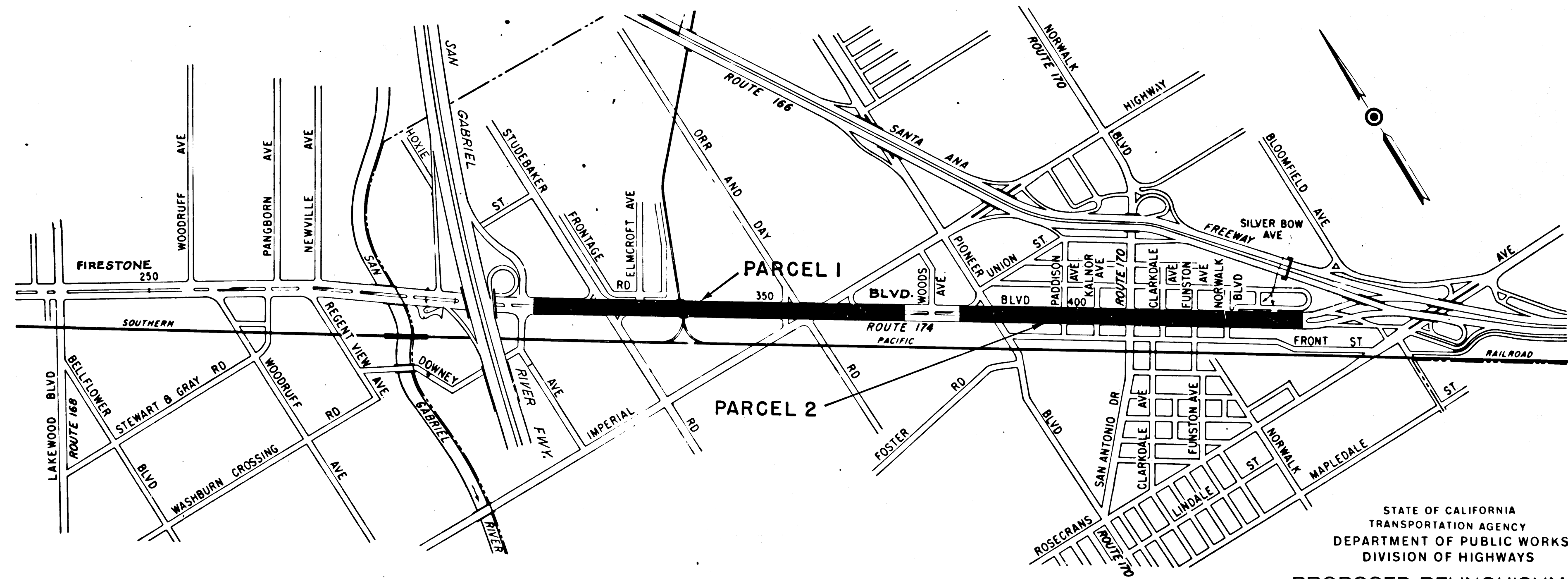
2244

RECORDED
 AT REQUEST OF
 DEPT. OF PUBLIC WORKS
 NOV 16 1966
 30 MIN. PAST 12 P.M.

IN BOOK 5
 AT PAGE 11
 OF STATE HIGHWAY MAPS
 OF LOS ANGELES COUNTY, CALIF.
 RAY E. LEE
 COUNTY RECORDER
 BY *Ray E. Lee* DEPUTY
 FREE

STATE OF CALIFORNIA
 TRANSPORTATION AGENCY
 DEPARTMENT OF PUBLIC WORKS
 DIVISION OF HIGHWAYS

RIGHT OF WAY MAPS OF
STATE HIGHWAY
 in city of norwalk on firestone blvd. between
 san gabriel river freeway and santa ana freeway.



CITY OF NORWALK

STATE OF CALIFORNIA
 TRANSPORTATION AGENCY
 DEPARTMENT OF PUBLIC WORKS
 DIVISION OF HIGHWAYS
PROPOSED RELINQUISHMENT

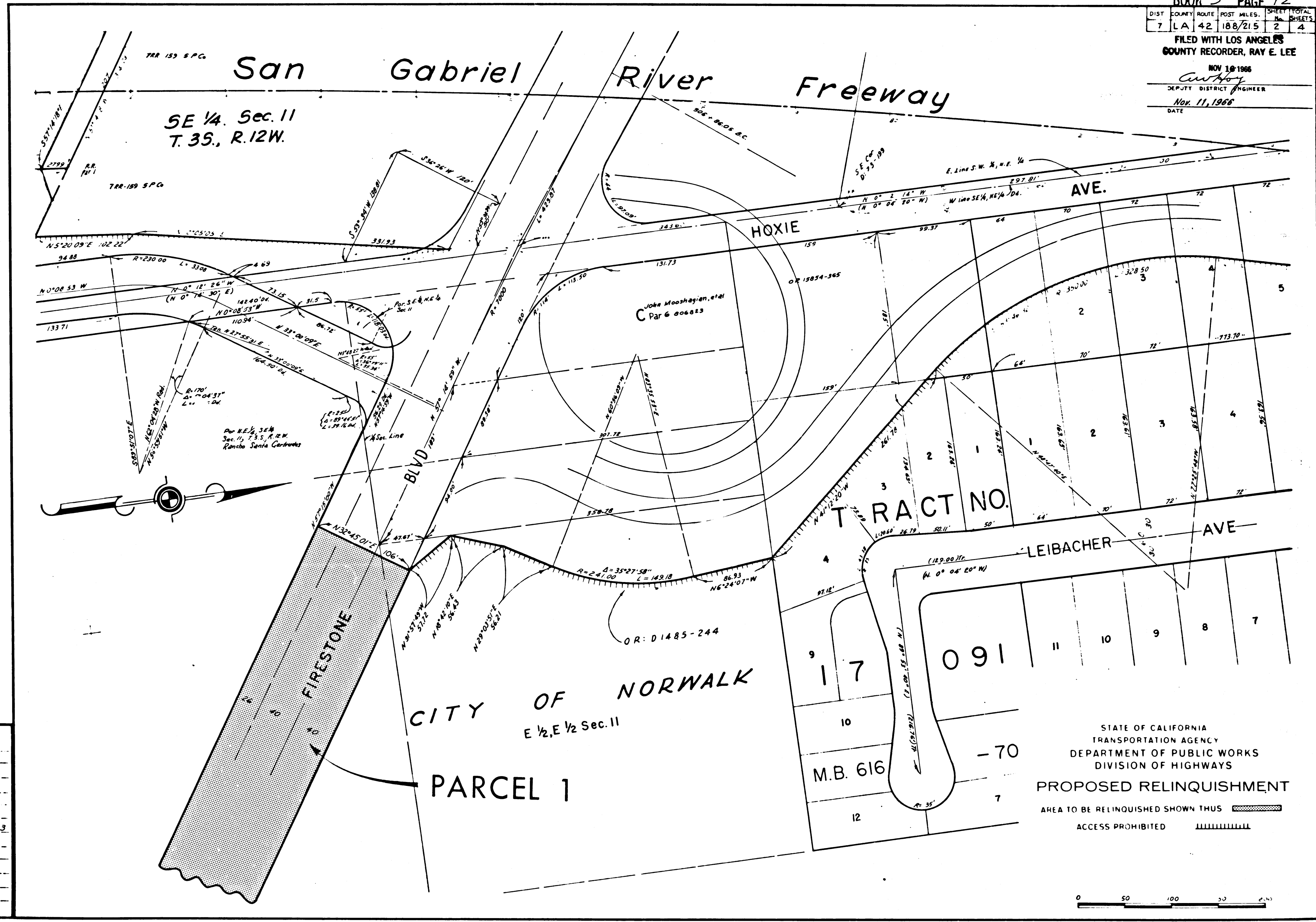
AREA TO BE RELINQUISHED SHOWN THUS



REL-561
 DRN BY *J.E.F.*
 C/LC BY
 CK'D BY *St. J.*
 BASE MAP NO'S
P.5335 P.5333
 F-1960
 REF. MAP NO'S
 AS BUILT NO'S

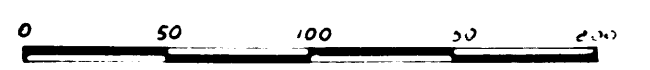
FILED WITH LOS ANGELES COUNTY RECORDER, RAY E. LEE

NOV 19 1966
 DEPUTY DISTRICT ENGINEER
 Nov. 11, 1966
 DATE



REL-561
 ORN BY J.E.E.
 C'LC BY
 CK'D BY ST.J.
 BASE MAP NO'S
 F-1960
 P-5335 B5333
 REF. MAP NO'S
 AS BUILT NO'S

STATE OF CALIFORNIA
 TRANSPORTATION AGENCY
 DEPARTMENT OF PUBLIC WORKS
 DIVISION OF HIGHWAYS
 PROPOSED RELINQUISHMENT
 AREA TO BE RELINQUISHED SHOWN THUS [hatched pattern]
 ACCESS PROHIBITED [dashed line pattern]



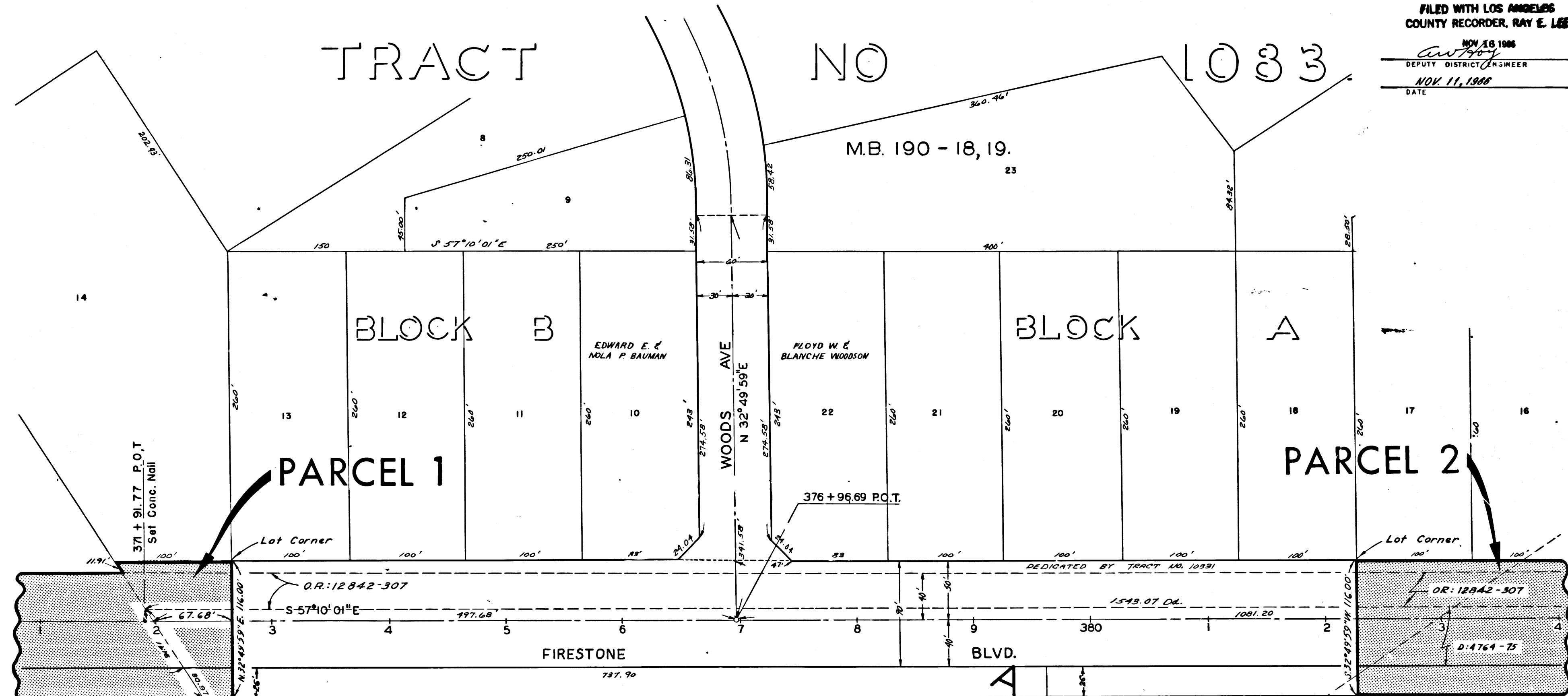
DIST	COUNTY	ROUTE	POST MILES	SHEET TOTAL NO. SHEETS
7	L.A.	42	18.8/21.5	3/4

FILED WITH LOS ANGELES COUNTY RECORDER, RAY E. LEE

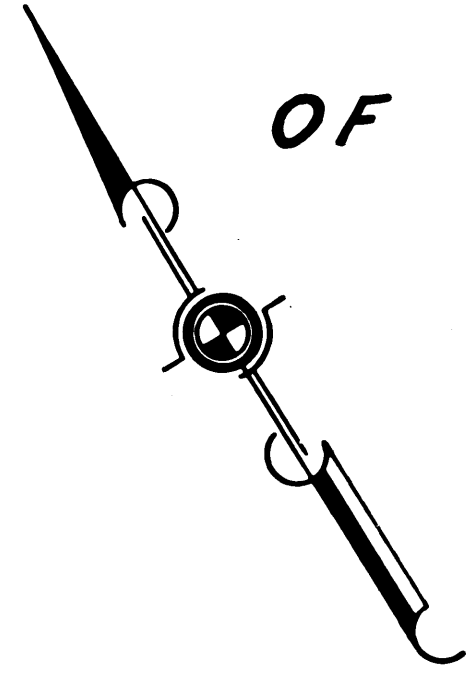
NOV 16 1968
DEPUTY DISTRICT ENGINEER
NOV 11, 1968
DATE

TRACT NO 1033

M.B. 190 - 18, 19.



CITY OF NORWALK



STATE OF CALIFORNIA
TRANSPORTATION AGENCY
DEPARTMENT OF PUBLIC WORKS
DIVISION OF HIGHWAYS

PROPOSED RELINQUISHMENT

AREA TO BE RELINQUISHED SHOWN THUS

ACCESS PROHIBITED

REL-561
DRN BY J.F.F.
C/LC BY
CK'D BY St. J.
BASE MAP NO'S
5335 & 5333
1-1960
REF. MAP NO'S
AS BUILT NO'S

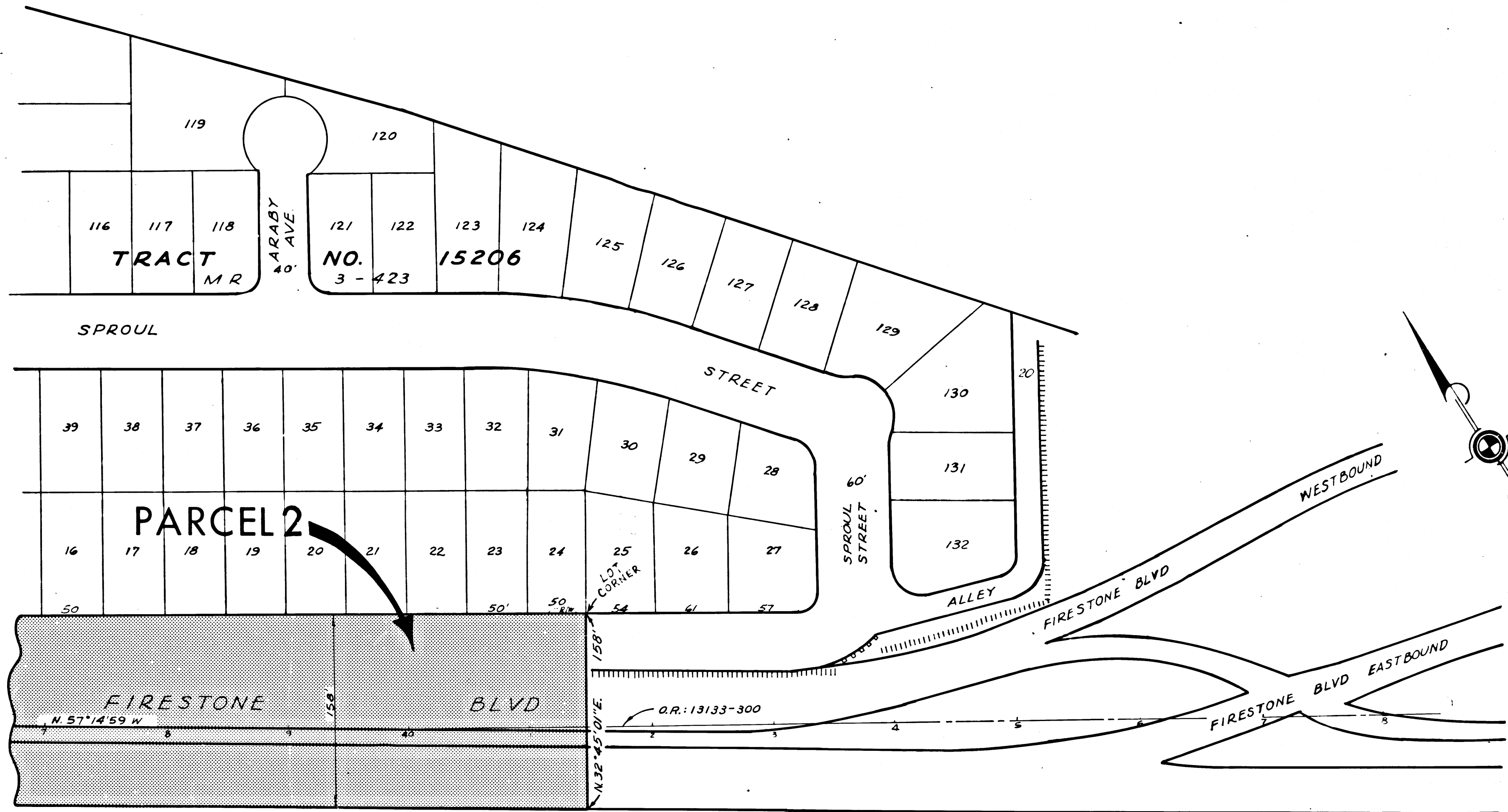
PINE LUMBER DISTRIBUTORS

RELiance DAIRY FARMS

FILED WITH LOS ANGELES
COUNTY RECORDER, RAY E. LEE
NOV 16 1966

DIST	COUNTY	ROUTE	POST MILES	SHEET TOTAL	NO. SHEETS
7	LA	42	188/215	4	4

Anthony
DEPUTY DISTRICT ENGINEER
NOV. 11, 1966
DATE



CITY OF NORWALK

STATE OF CALIFORNIA
TRANSPORTATION AGENCY
DEPARTMENT OF PUBLIC WORKS
DIVISION OF HIGHWAYS
PROPOSED RELINQUISHMENT

AREA TO BE RELINQUISHED SHOWN THUS

ACCESS PROHIBITED

SCALE
0 50 100 150 200 FT.

REL-561
DRN BY J.F.F.
C/LC BY
CK'D BY St. J.
BASE MAP NO'S
F-1960
P. 5335 P. 5333
REF. MAP NO'S
AS BUILT NO'S

