

5/15 240

DIST	COUNTY	ROUTE	POST MILES	SHEET NO	TOTAL SHEETS
7	LA	60	3.0/4.5	1	1

STATE OF CALIFORNIA
 TRANSPORTATION AGENCY
 DEPARTMENT OF PUBLIC WORKS
 DIVISION OF HIGHWAYS

2538

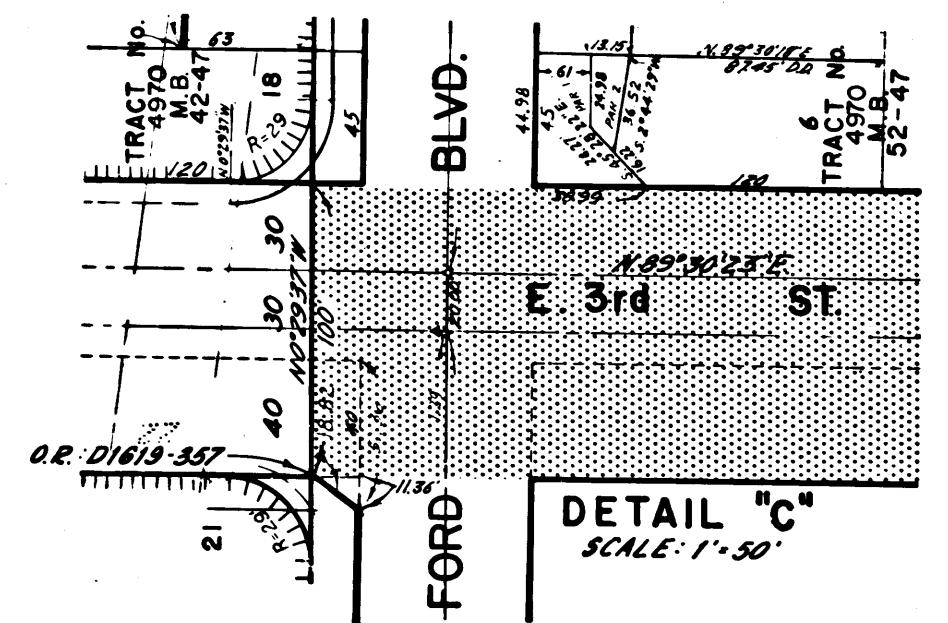
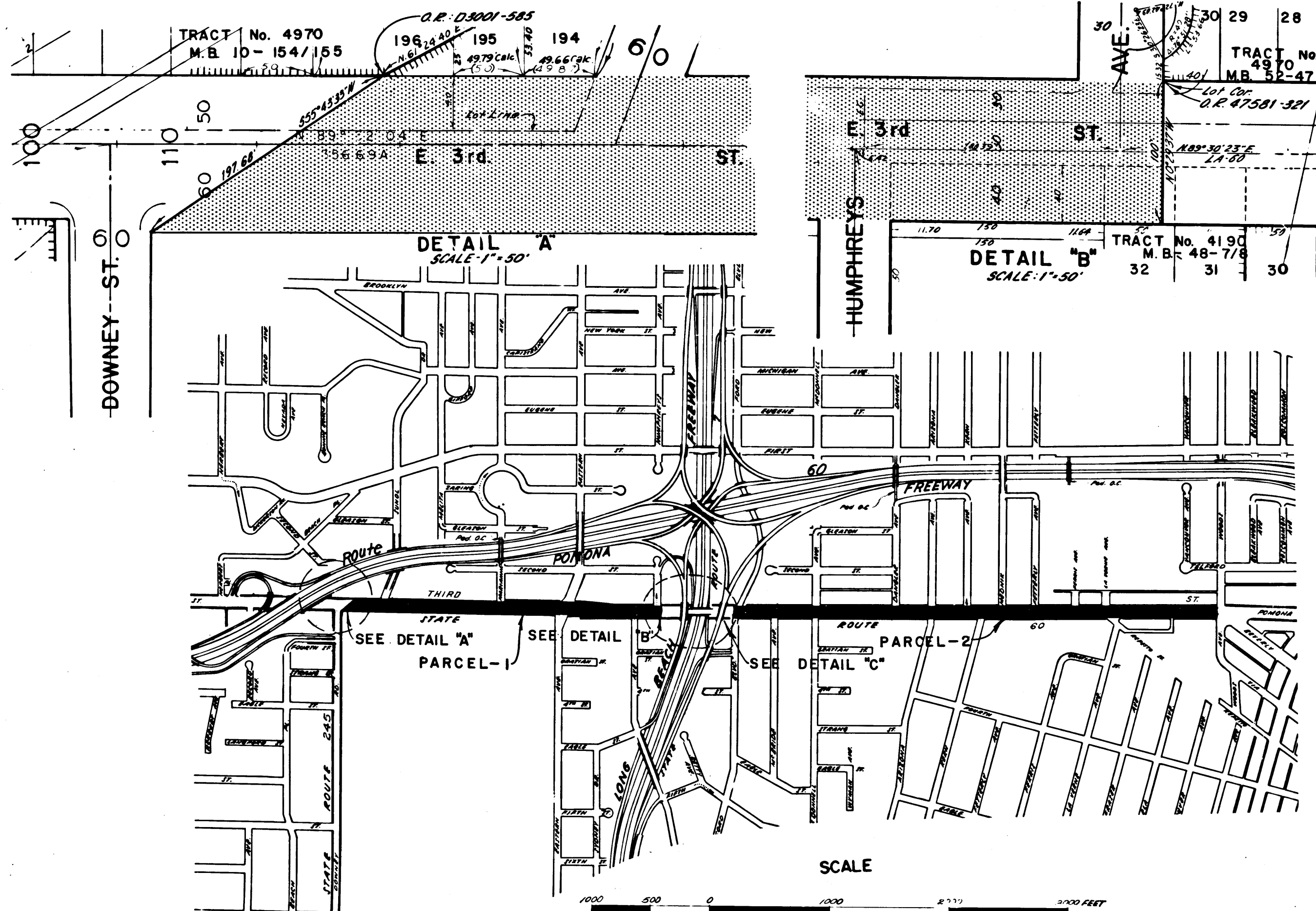
Anthony
 DEPUTY DISTRICT ENGINEER
 DATE NOV. 29, 1966

RECORDED
 AT REQUEST OF
 DEPT. OF PUBLIC WORKS
 DEC. 5, 1966
 4:00 P.M.
 40 PAST 2 P.M.

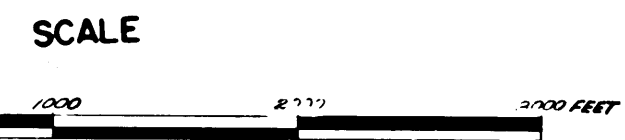
IN BOOK 5
 AT PAGE 15
 OF STATE HIGHWAY MAPS
 LOS ANGELES COUNTY, CALIF.
 RAY E. LEE
 COUNTY RECORDER
 FREE

RIGHT OF WAY MAPS OF
STATE HIGHWAY

In Los Angeles County in and near Monterey Park on Route 60 between 3rd Street and Woods Avenue
 and on Route 7 between Olympic Boulevard and Floral Drive



REL- 546
 DRN BY R.D.
 C.L.C. BY JFF
 CK'D BY GDN
 BASE MAP NO'S
 F-1526 - F-1779
 F-1780 - F-1781
 REF. MAP NO'S
 C.C.M. - 215.6
 C.C.M. - 215.7
 AS BUILT NO'S
 159-12



STATE OF CALIFORNIA
 TRANSPORTATION AGENCY
 DEPARTMENT OF PUBLIC WORKS
 DIVISION OF HIGHWAYS
PROPOSED RELINQUISHMENT
 AREA TO BE RELINQUISHED SHOWN THUS