

5/18

STATE OF CALIFORNIA  
HIGHWAY TRANSPORTATION AGENCY  
DEPARTMENT OF PUBLIC WORKS  
DIVISION OF HIGHWAYS

RIGHT OF WAY MAPS OF  
**STATE HIGHWAY**  
IN LOS ANGELES COUNTY AT WARD ROAD AND THE ANTELOPE  
VALLEY FREEWAY

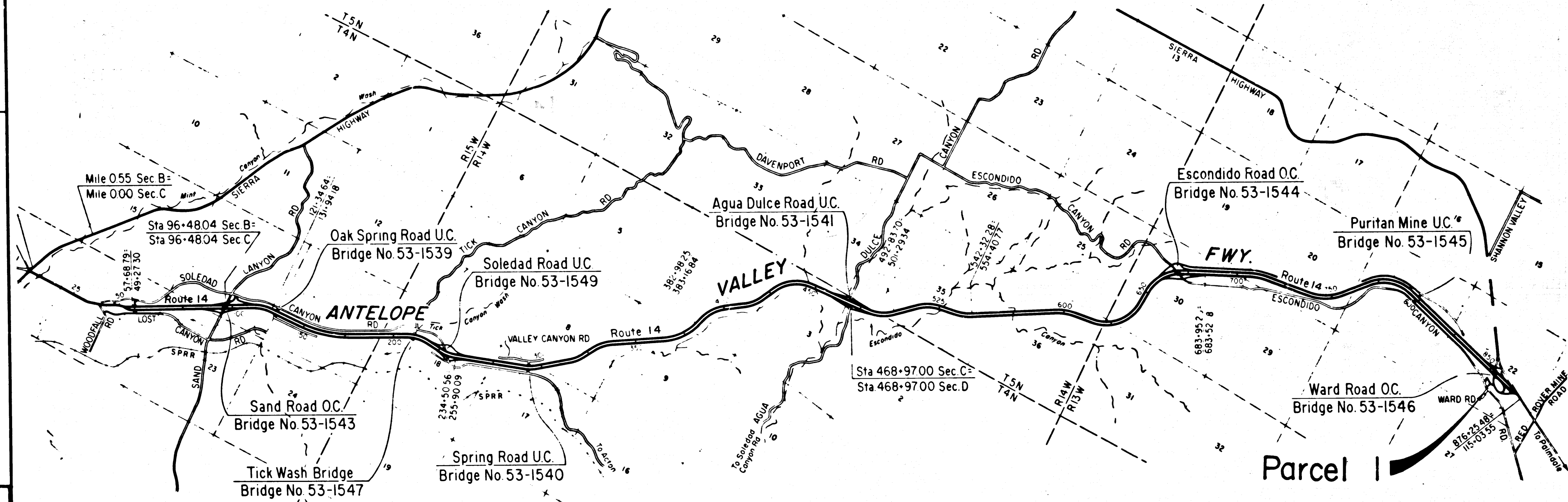
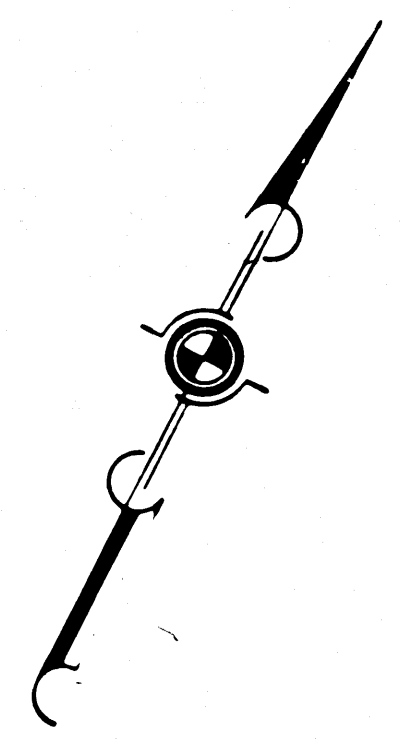
DIST.	COUNTY	ROUTE	POST MILES	SHEET NO.	TOTAL SHEETS
7	LA	14	46.8	1	2

*Curt H. ...*  
DEPUTY DISTRICT ENGINEER  
DEC. 19, 1966  
DATE

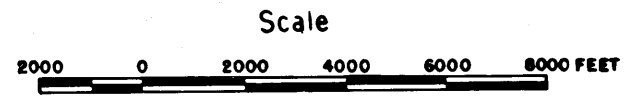
2615

RECORDED  
AT REQUEST OF  
DEPT. OF PUBLIC WORKS  
DEC. 19, 1966  
30 MIN.  
PAST 3 P.M.

IN BOOK 5  
AT PAGE 18  
OF STATE HIGHWAY MAPS  
LOS ANGELES COUNTY, CALIF.  
RAY E. LEE  
COUNTY RECORDER  
FREE



Parcel 1  
PROPOSED RELINQUISHMENT  
TO THE  
COUNTY OF LOS ANGELES

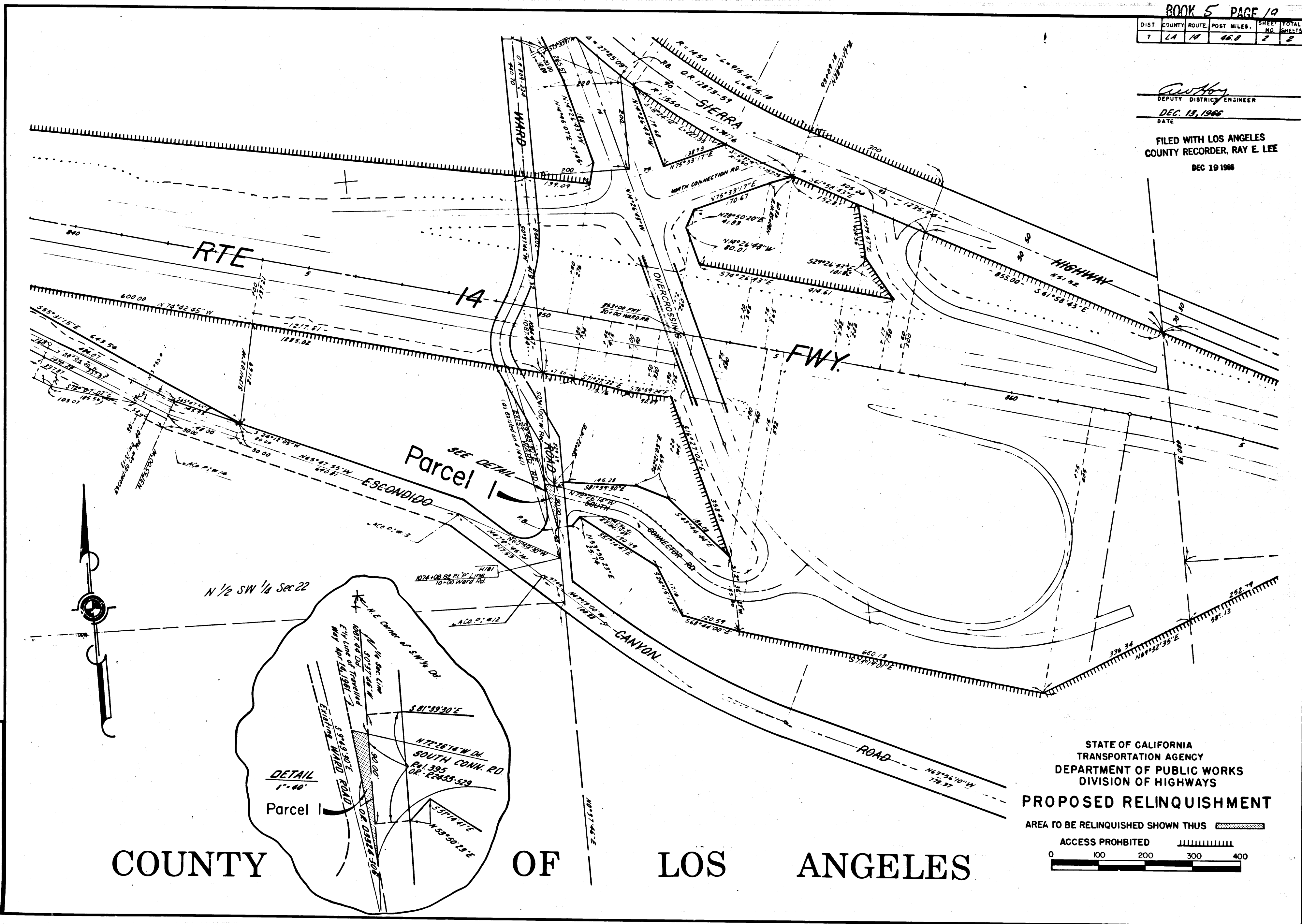


REL-573  
DRN BY ECH  
C/LC BY  
CK'D BY GDM  
BASE MAP NO'S  
F-1065  
REF. MAP NO'S  
AS BUILT NO'S  
145-10

DIST	COUNTY	ROUTE	POST MILES	SHEET NO.	TOTAL SHEETS
7	LA	14	66.8	2	2

*Ray E. Lee*  
 DEPUTY DISTRICT ENGINEER  
 DEC. 13, 1966  
 DATE

FILED WITH LOS ANGELES  
 COUNTY RECORDER, RAY E. LEE  
 DEC 19 1966



REL-573  
 DRN BY ECH  
 C'LC BY  
 CK'D BY GDM  
 BASE MAP NO'S  
 E 1063  
 REF. MAP NO'S  
 AS BUILT NO'S  
 145-11

COUNTY OF LOS ANGELES

STATE OF CALIFORNIA  
 TRANSPORTATION AGENCY  
 DEPARTMENT OF PUBLIC WORKS  
 DIVISION OF HIGHWAYS  
**PROPOSED RELINQUISHMENT**  
 AREA TO BE RELINQUISHED SHOWN THUS   
 ACCESS PROHIBITED   
 0 100 200 300 400