

DIST	COUNTY	ROUTE	POST MILES	SHEET NO.	TOTAL SHEETS
7	LA	14	54.1627	1	3

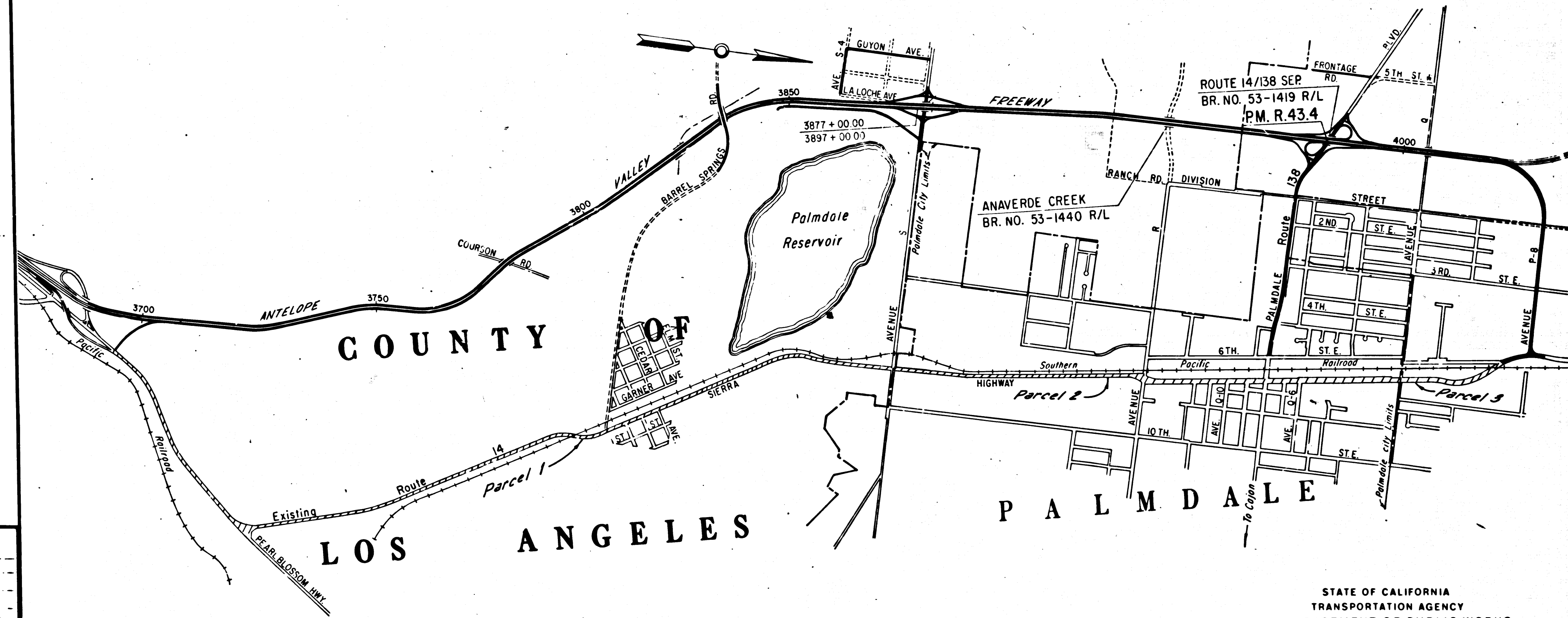
STATE OF CALIFORNIA
 TRANSPORTATION AGENCY
 DEPARTMENT OF PUBLIC WORKS
 DIVISION OF HIGHWAYS

Anthony
 DEPUTY DISTRICT ENGINEER
 DATE DEC. 13, 1966

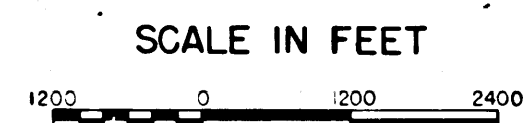
RIGHT OF WAY MAPS OF
STATE HIGHWAY

In Los Angeles County between Angeles Forest Highway and Avenue P-8 in Palmdale

4032
 RECORDED
 AT REQUEST OF
 DEPT. OF PUBLIC WORKS
 DEC. 20, 1966
 30 MIN. PAST 12 P.M.
 IN BOOK 5
 AT PAGE 22
 OF STATE HIGHWAY MAPS
 LOS ANGELES COUNTY, CALIF.
 RAY E. LEE
 COUNTY RECORDER
 FREE



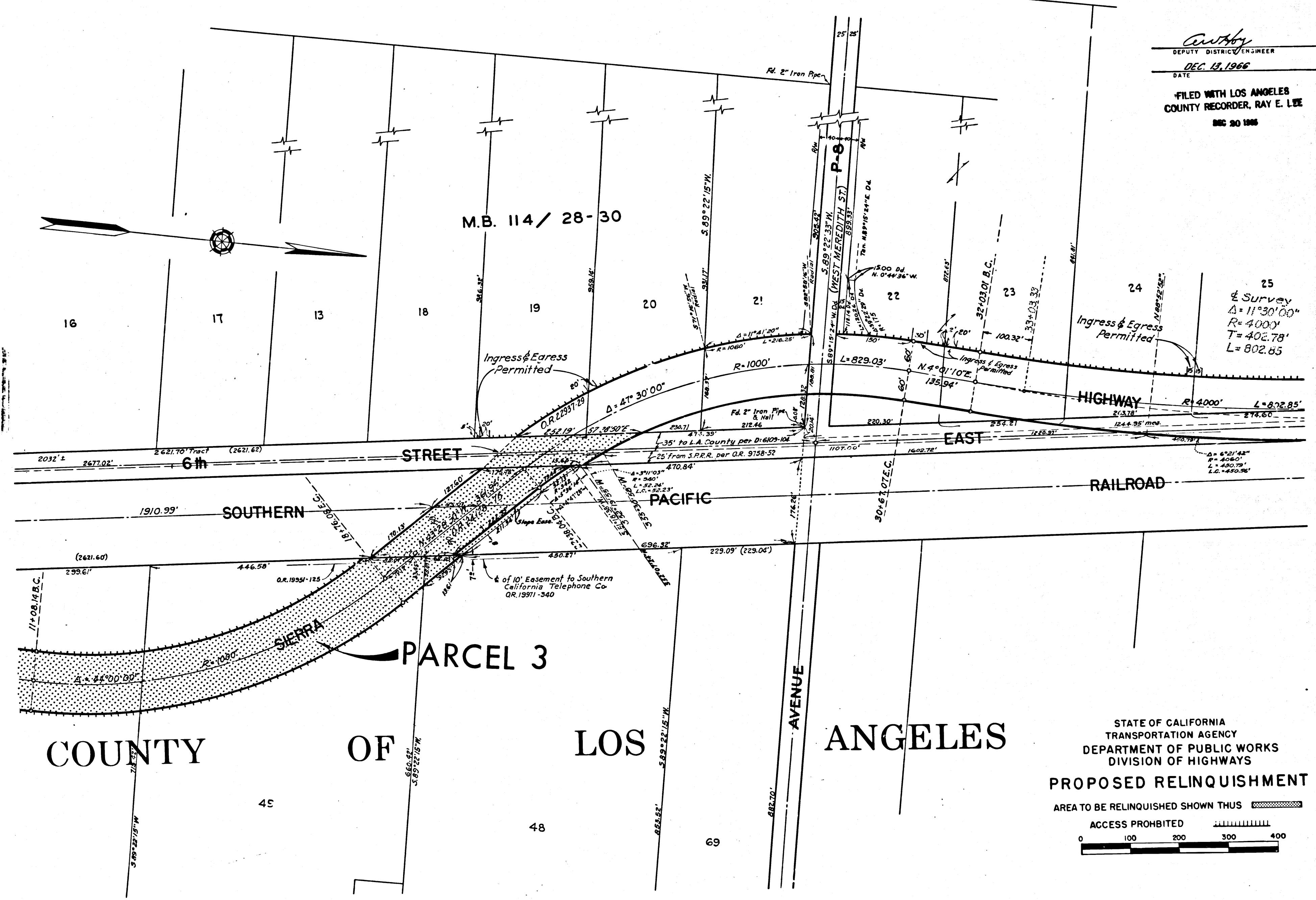
REL-559
 REL-560
 DYN BY EEM
 C/LC BY GDM
 CKD BY GDM
 BASE MAP NOS
 E-1070, P-3011
 REF. MAP NOS
 AS BUILT NOS
 164-2





STATE OF CALIFORNIA
 TRANSPORTATION AGENCY
 DEPARTMENT OF PUBLIC WORKS
 DIVISION OF HIGHWAYS
PROPOSED RELINQUISHMENT
 AREA TO BE RELINQUISHED SHOWN THUS

DIST	COUNTY	ROUTE	POST MILES	SHEET NO.	TOTAL SHEETS
7	LA	14	54.4/007	3	3

Anthony
 DEPUTY DISTRICT ENGINEER
 DATE **DEC. 13, 1966**
 FILED WITH LOS ANGELES
 COUNTY RECORDER, RAY E. LEE
 DEC 20 1966



COUNTY OF LOS ANGELES

STATE OF CALIFORNIA
 TRANSPORTATION AGENCY
 DEPARTMENT OF PUBLIC WORKS
 DIVISION OF HIGHWAYS
PROPOSED RELINQUISHMENT
 AREA TO BE RELINQUISHED SHOWN THUS 
 ACCESS PROHIBITED 
 0 100 200 300 400

REL-559
 DRN BY E.E.H.
 C.L.C. BY G.D.W.
 CK'D BY G.D.W.
 BASE MAP NO'S
 F-1070, P-3011
 REF. MAP NO'S
 AS BUILT NO'S
 164-2