

DIST.	COUNTY	ROUTE	POST MILES.	SHEET No.	TOTAL SHEETS
7	L.A.	101	36.4/36.9	1	2

STATE OF CALIFORNIA
 TRANSPORTATION AGENCY
 DEPARTMENT OF PUBLIC WORKS
 DIVISION OF HIGHWAYS

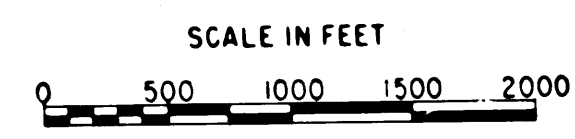
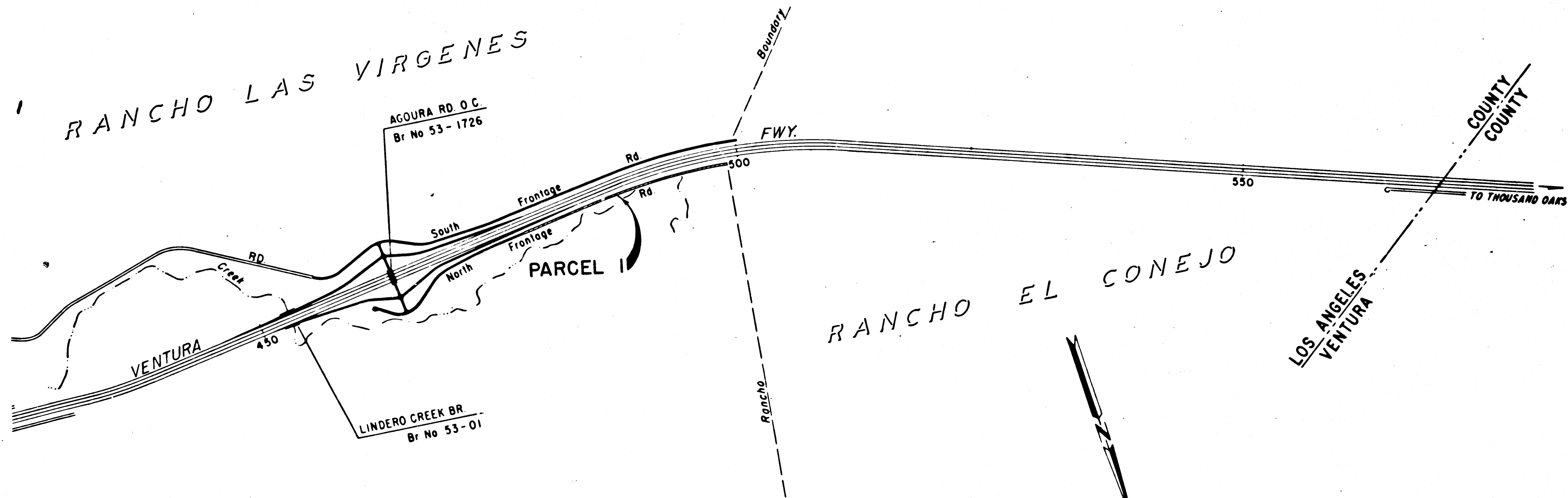
RIGHT OF WAY MAPS OF
STATE HIGHWAY
 IN LOS ANGELES COUNTY NEAR AGOURA ROAD

Carby
 DEPUTY DISTRICT ENGINEER
 Jan. 26, 1967
 DATE

3092
 RECORDED
 AT REQUEST OF
 DEPT. OF PUBLIC WORKS
 FEB. 1, 1967
 MIN. 20 PAST 4 P.M.

IN BOOK 5
 AT PAGE 25
 OF STATE HIGHWAY MAPS
 LOS ANGELES COUNTY, CALIF.
 RAY E. LEE
 COUNTY RECORDER
 BY *Ray* FREE
 Deputy

4120



REL-502
 DRYN BY *EEH*
 C.L.C. BY *MM*
 CK'D BY *EDW*
 BASE MAP NO'S
 REF. MAP NO'S
 S.C.M. 13.2
 AS BUILT NO'S
 164-6

STATE OF CALIFORNIA
 TRANSPORTATION AGENCY
 DEPARTMENT OF PUBLIC WORKS
 DIVISION OF HIGHWAYS
PROPOSED RELINQUISHMENT

FILED WITH LOS ANGELES COUNTY RECORDER, RAY E. LEE
FEB. 1 1967

DIST	COUNTY	ROUTE	POST MILES	SHEET TOTAL	SHEET NO.
7	LA	101	36.4/36.9	2	2

Anthony
DEPUTY DIST. C. ENGINEER
Jan. 26, 1967
DATE

RANCHO LAS VIRGENES
Book 7 Pages 218 & 219 Of Patents

COUNTY OF LOS ANGELES

M.R. - 52 - 63

PORTION PARCEL 2-S.C.C. 55315
O.R.B.M. 3186-271.4
Francis A. Reyes 1/2
Espiritu R. De Chavez 1/2
147.97 Acres

PORTION PARCEL 2-S.C.C. 55315
O.R.B.M. 3186-271.4
Francis A. Reyes 1/2
Espiritu R. De Chavez 1/2
147.97 Acres

REL-502

DRN BY: *EEH*
C.L.C BY: *M.M.*
CK'D BY: *GDM*
BASE MAP NO'S: *E-2217.3 & 2218*
REF. MAP NO'S: *C.C.M. #13.2*
AS BUILT NO'S: *164-G*

BRIGIDO BOTILLER
S.C.C. 2898
190.96 ACRES

PARCEL 1

STATE OF CALIFORNIA
TRANSPORTATION AGENCY
DEPARTMENT OF PUBLIC WORKS
DIVISION OF HIGHWAYS
PROPOSED RELINQUISHMENT

0 100' 200' 300' 400'
AREA TO BE RELINQUISHED SHOWN THUS [hatched pattern]
ACCESS PROHIBITED [hatched pattern]

FWY

