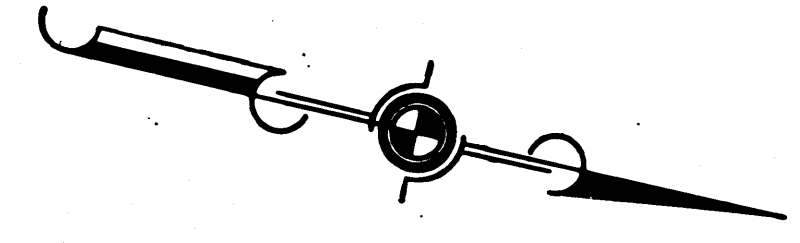


DIST	COUNTY	ROUTE	POST MILES	SHEET NO	TOTAL SHEETS
7	LA	14	57.3 / 59.8	1	5

STATE OF CALIFORNIA
 TRANSPORTATION AGENCY
 DEPARTMENT OF PUBLIC WORKS
 DIVISION OF HIGHWAYS

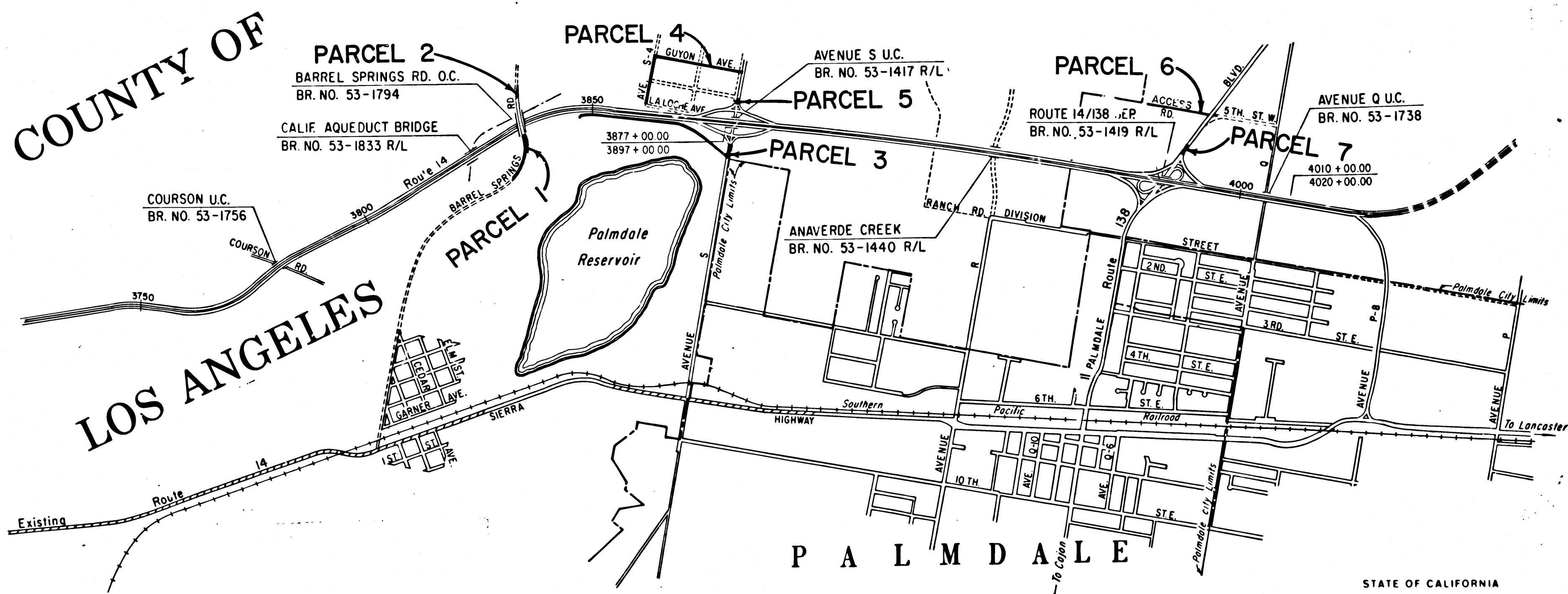


RIGHT OF WAY MAPS OF
STATE HIGHWAY

In the County of Los Angeles,
 between the Angeles Forest Highway and Avenue P-8 in the City of Palmdale

Anthony
 DEPUTY DISTRICT ENGINEER
 Feb 10, 1967
 DATE

2220
 RECORDED
 AT REQUEST OF
 DEPT. OF PUBLIC WORKS
 FEB. 15, 1967
 58 PAST 10 A.M.
 IN BOOK 5
 AT PAGE 30
 OF STATE HIGHWAY MAPS
 LOS ANGELES COUNTY, CALIF.
 RAY E. LEE
 COUNTY RECORDER
 BY *Anthony* Deputy

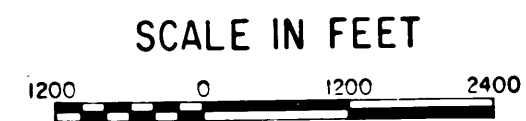


COUNTY OF
LOS ANGELES

PALMDALE

10/58
 5/30

REL- 549
 550
 DRN BY JPS
 C/LC BY D.E.
 CK'D BY F.M.A.
 BASE MAP NOS
 F1071 &
 F1072
 REF. MAP NOS
 AS BUILT NOS
 164-2



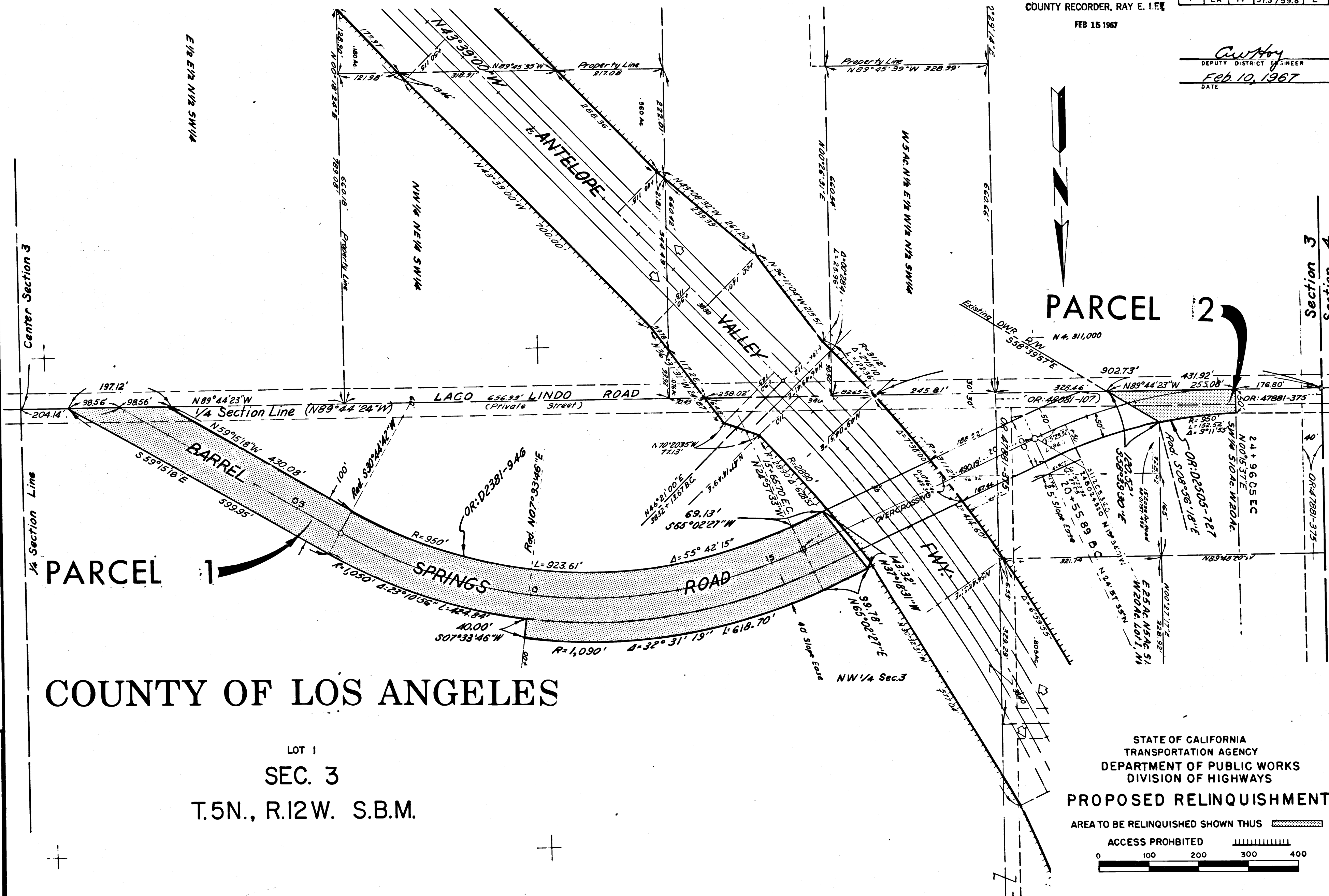
STATE OF CALIFORNIA
 TRANSPORTATION AGENCY
 DEPARTMENT OF PUBLIC WORKS
 DIVISION OF HIGHWAYS
PROPOSED RELINQUISHMENT

FILED WITH LOS ANGELES COUNTY RECORDER, RAY E. LEE

DIST.	COUNTY	ROUTE	POST MILES.	SHEET NO.	TOTAL SHEETS
7	LA	14	57.3 / 59.8	2	5

FEB 15 1967

C. W. Hoy
DEPUTY DISTRICT ENGINEER
Feb. 10, 1967
DATE



COUNTY OF LOS ANGELES

LOT 1
SEC. 3
T.5N., R.12W. S.B.M.

REL- 549
550
CRN BY JPS
C'LC BY
C'KD BY
BASE MAP NO'S
F1071
REF. MAP NO'S
AS BUILT NO'S
164.2

STATE OF CALIFORNIA
TRANSPORTATION AGENCY
DEPARTMENT OF PUBLIC WORKS
DIVISION OF HIGHWAYS
PROPOSED RELINQUISHMENT
AREA TO BE RELINQUISHED SHOWN THUS
ACCESS PROHIBITED
0 100 200 300 400

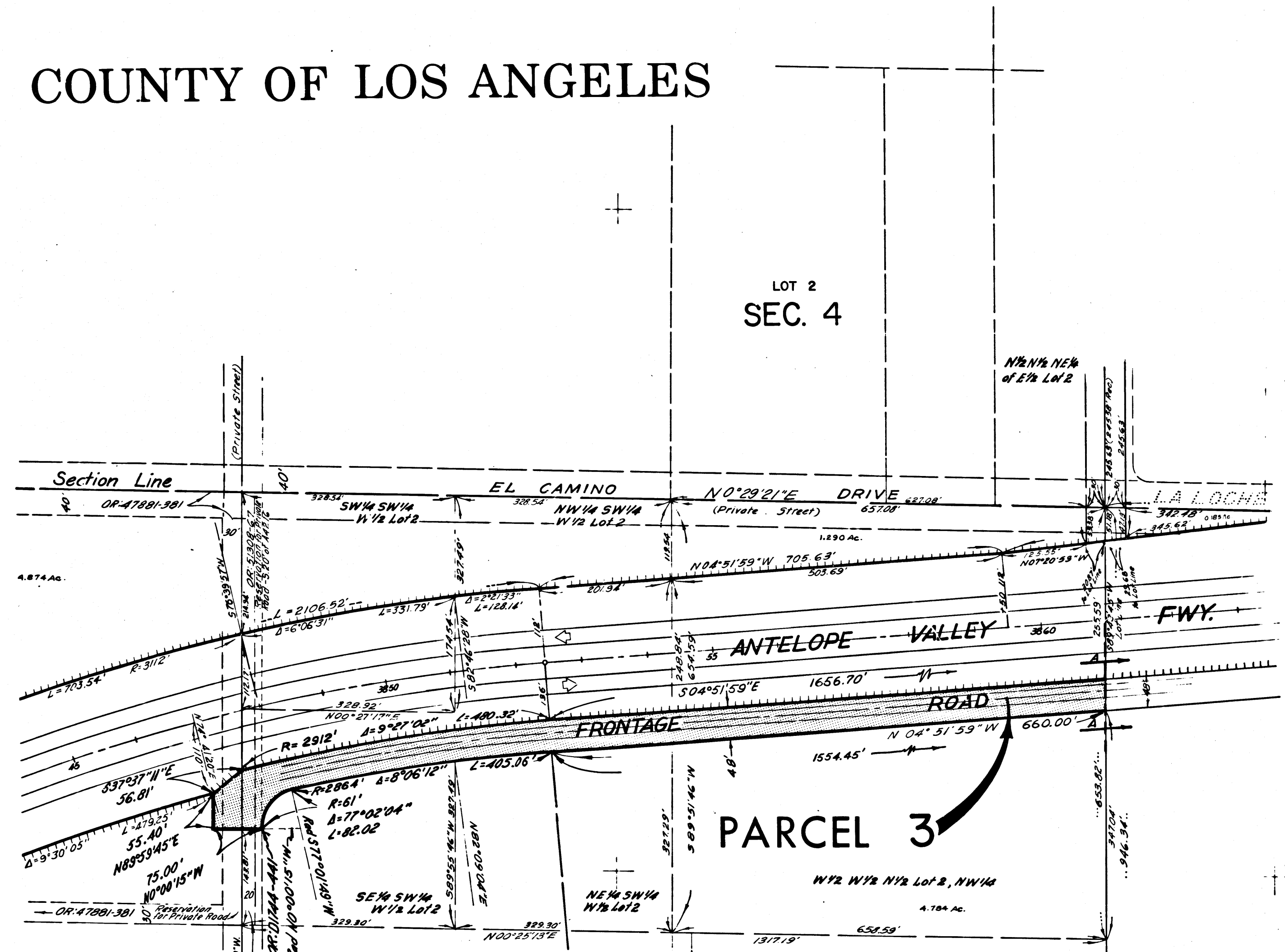
FILED WITH LOS ANGELES
COUNTY RECORDER, RAY E. LEE
FEB 15 1967

DIST	COUNTY	ROUTE	POST MILES.	SHEET NO.	TOTAL SHEETS
7	LA	14	57.3 / 59.8	3	5

Carroll
DEPUTY DISTRICT ENGINEER
Feb. 10, 1967
DATE

COUNTY OF LOS ANGELES


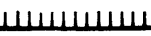
LOT 2
SEC. 4



PARCEL 3
W/2 W/2 N/2 Lot 2, NW/4
A. 704 AC.
LOT 2
SEC. 3
T.5N., R.12W. S.B.M.



REL- 549
550
DRN BY JPS
C/LC BY D.E.
CK'D BY F.M.A.
BASE MAP NO'S
F1071 &
F1072
REF. MAP NO'S
AS BUILT NO'S
164.2

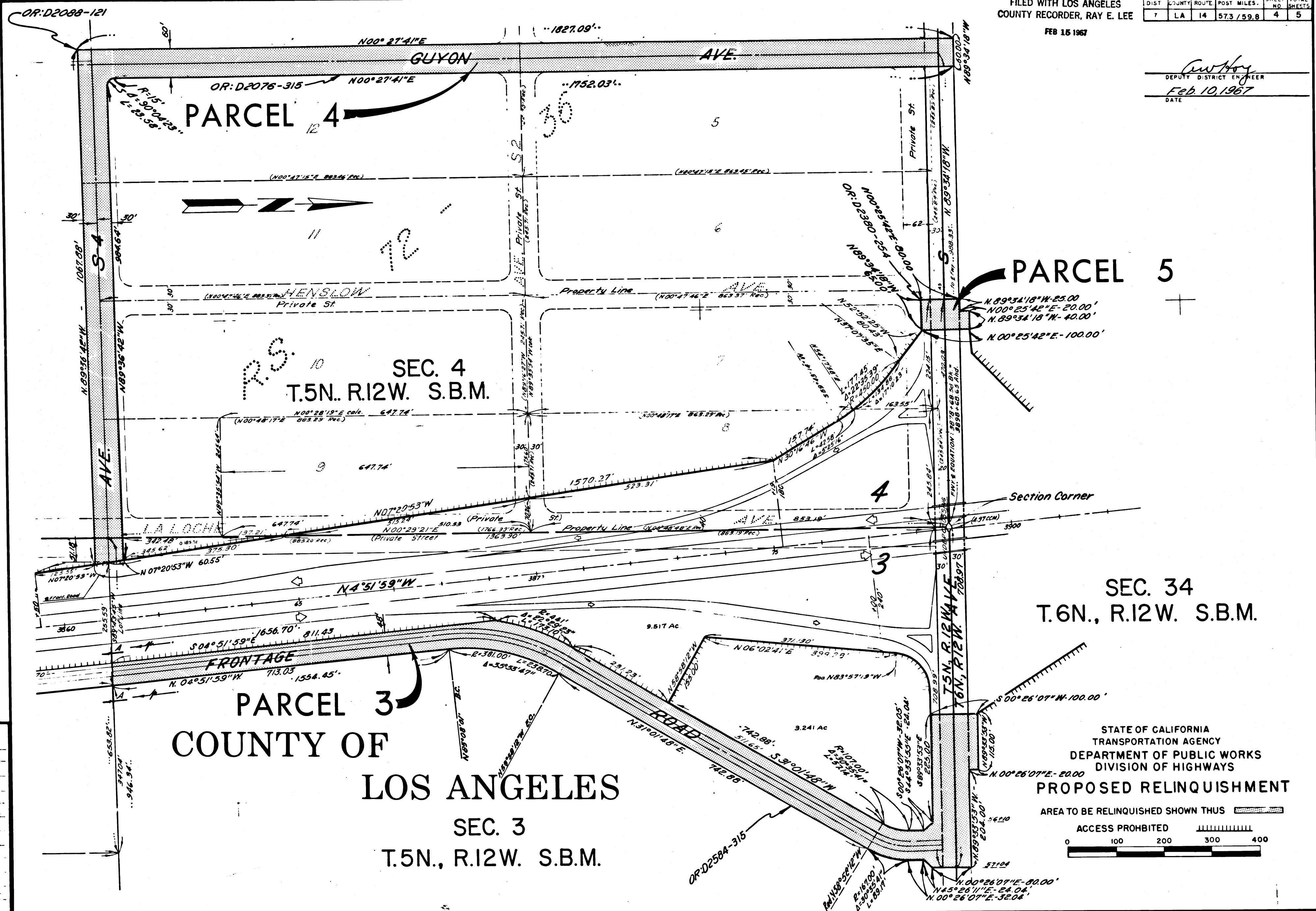
STATE OF CALIFORNIA
TRANSPORTATION AGENCY
DEPARTMENT OF PUBLIC WORKS
DIVISION OF HIGHWAYS
PROPOSED RELINQUISHMENT
AREA TO BE RELINQUISHED SHOWN THUS 
ACCESS PROHIBITED 
0 100 200 300 400

Property Line
 $N 24^{\circ} 21' 58'' W 541.51'$ Calc
 $(N 23^{\circ} 47' W 589.3'$ Rec.)

DIST	COUNTY	ROUTE	POST MILES	SHEET NO.	TOTAL SHEETS
7	LA	14	57.3 / 59.8	4	5

FILED WITH LOS ANGELES COUNTY RECORDER, RAY E. LEE
FEB 15 1967

Ray E. Lee
DEPUTY DISTRICT ENGINEER
Feb. 10, 1967
DATE



REL- 549
550
DWN BY JPS
CLC BY D.F.
CK'D BY F.M.A.
BASE MAP NOS
F1071 &
F1072
REF. MAP NOS
AS BUILT NOS
164.2

PARCEL 3
COUNTY OF
LOS ANGELES
SEC. 3
T.5N., R.12W. S.B.M.

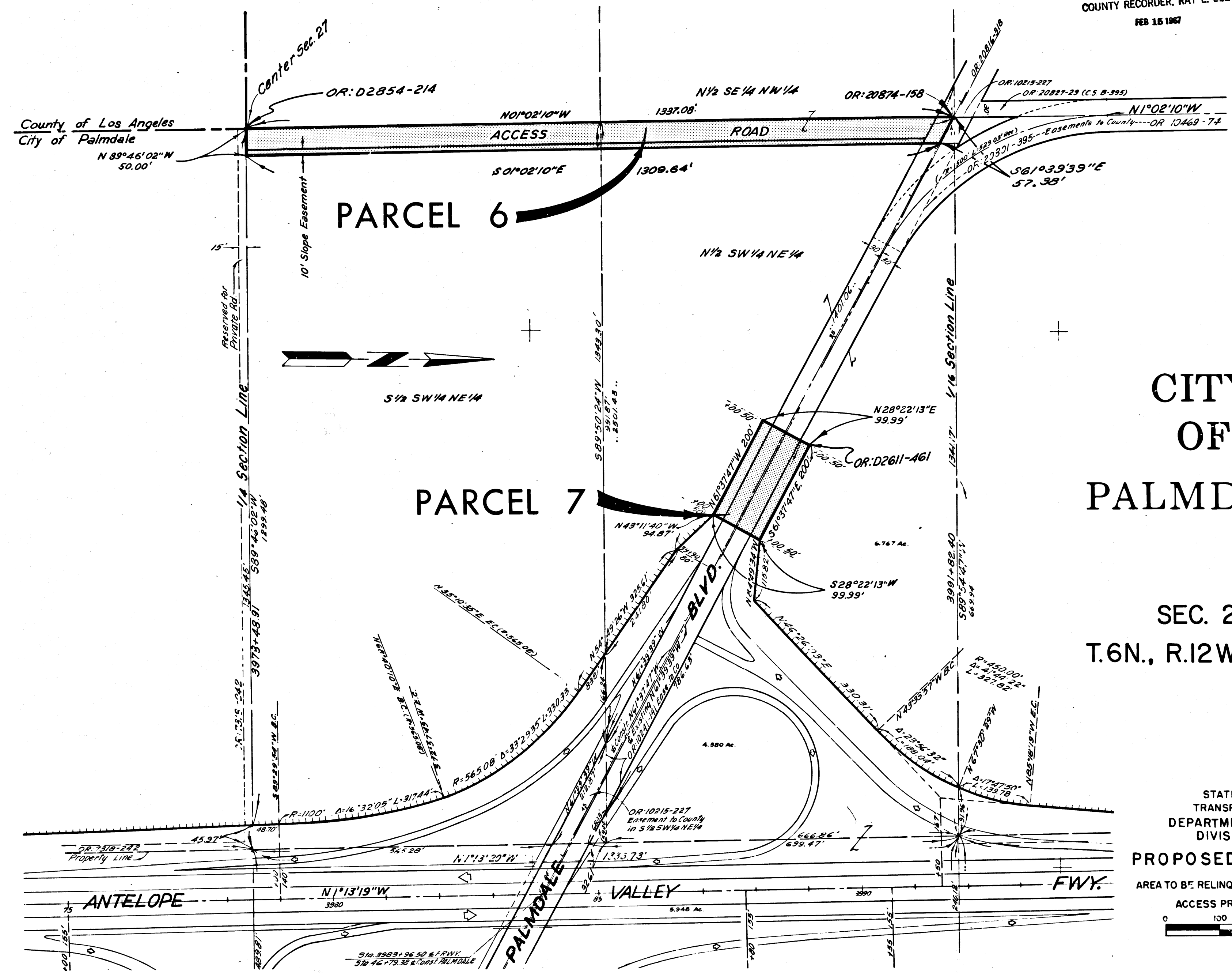
SEC. 34
T.6N., R.12W. S.B.M.

STATE OF CALIFORNIA
TRANSPORTATION AGENCY
DEPARTMENT OF PUBLIC WORKS
DIVISION OF HIGHWAYS
PROPOSED RELINQUISHMENT
AREA TO BE RELINQUISHED SHOWN THUS
ACCESS PROHIBITED
0 100 200 300 400



FILED WITH LOS ANGELES
COUNTY RECORDER, RAY E. LEE
FEB 15 1967

DIST	COUNTY	ROUTE	POST MILES	SHEET NO.	TOTAL SHEETS
7	LA	14	57.3 / 59.8	5	5

C. W. HAY
DEPUTY DISTRICT ENGINEER
Feb. 10, 1967
DATE



CITY OF PALMDALE
SEC. 27
T.6N., R.12W. S.B.M.

STATE OF CALIFORNIA
TRANSPORTATION AGENCY
DEPARTMENT OF PUBLIC WORKS
DIVISION OF HIGHWAYS
PROPOSED RELINQUISHMENT
AREA TO BE RELINQUISHED SHOWN THUS 
ACCESS PROHIBITED 
0 100 200 300 400

REL- 549
550
DRN BY JPS
CLC BY OF
CK'D BY F.M.A.
BASE MAP NO'S
F1072
REF MAP NO'S
AS BUILT NO'S
164.2