

DIST	COUNTY	ROUTE	POST MILES	SHEET TOTAL
7	LA	60	4.1/6.3	1/8

Anthony
 DEPUTY DISTRICT ENGINEER
 FEB. 21, 1967
 DATE

3284

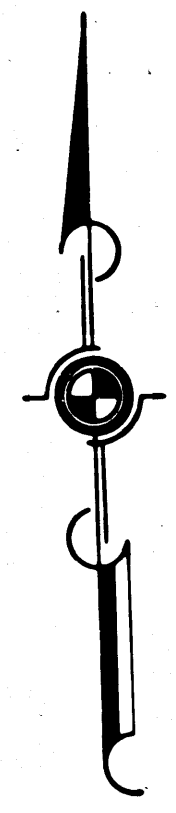
RECORDED
 AT REQUEST OF
 DEPT. OF PUBLIC WORKS
 FEB. 27, 1967
 20 MIN. PAST 4 P.M.

BOOK 5
 AT PAGE 41
 OF STATE HIGHWAY MAPS
 LOS ANGELES COUNTY, CALIF.
 RAY E. LEE
 COUNTY ENGINEER
 FREE

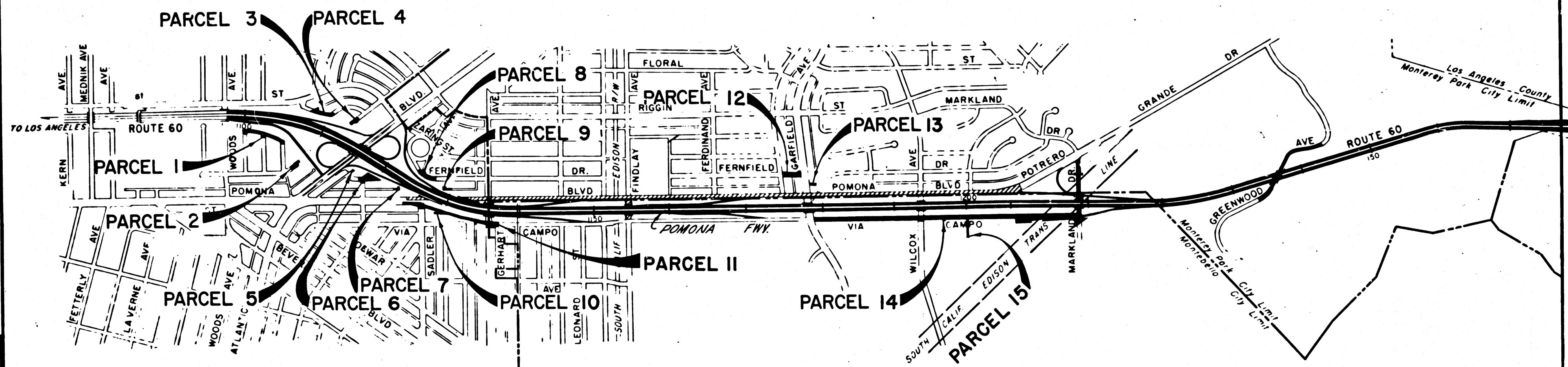
STATE OF CALIFORNIA
 TRANSPORTATION AGENCY
 DEPARTMENT OF PUBLIC WORKS
 DIVISION OF HIGHWAYS

RIGHT OF WAY MAPS OF
STATE HIGHWAY

In Los Angeles County in and near Montebello and
 Monterey Park between Woods Avenue and Arroyo Drive



MONTEREY PARK



MONTEBELLO

COUNTY OF
LOS ANGELES

STATE OF CALIFORNIA
 TRANSPORTATION AGENCY
 DEPARTMENT OF PUBLIC WORKS
 DIVISION OF HIGHWAYS
PROPOSED RELINQUISHMENT



565-
REL-566-567
 DRN BY *MC*
 C'LC BY *MM*
 CKD BY *DP*
 BASE MAP NO'S
 F-1782, F-1783
 F-1784
 F-1785
 REF. MAP NO'S
 CCM 215.8
 AS BUILT NO'S
 165-8, 156-18,
 155-14

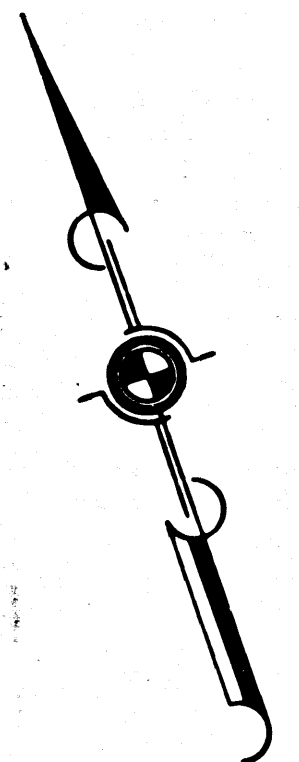
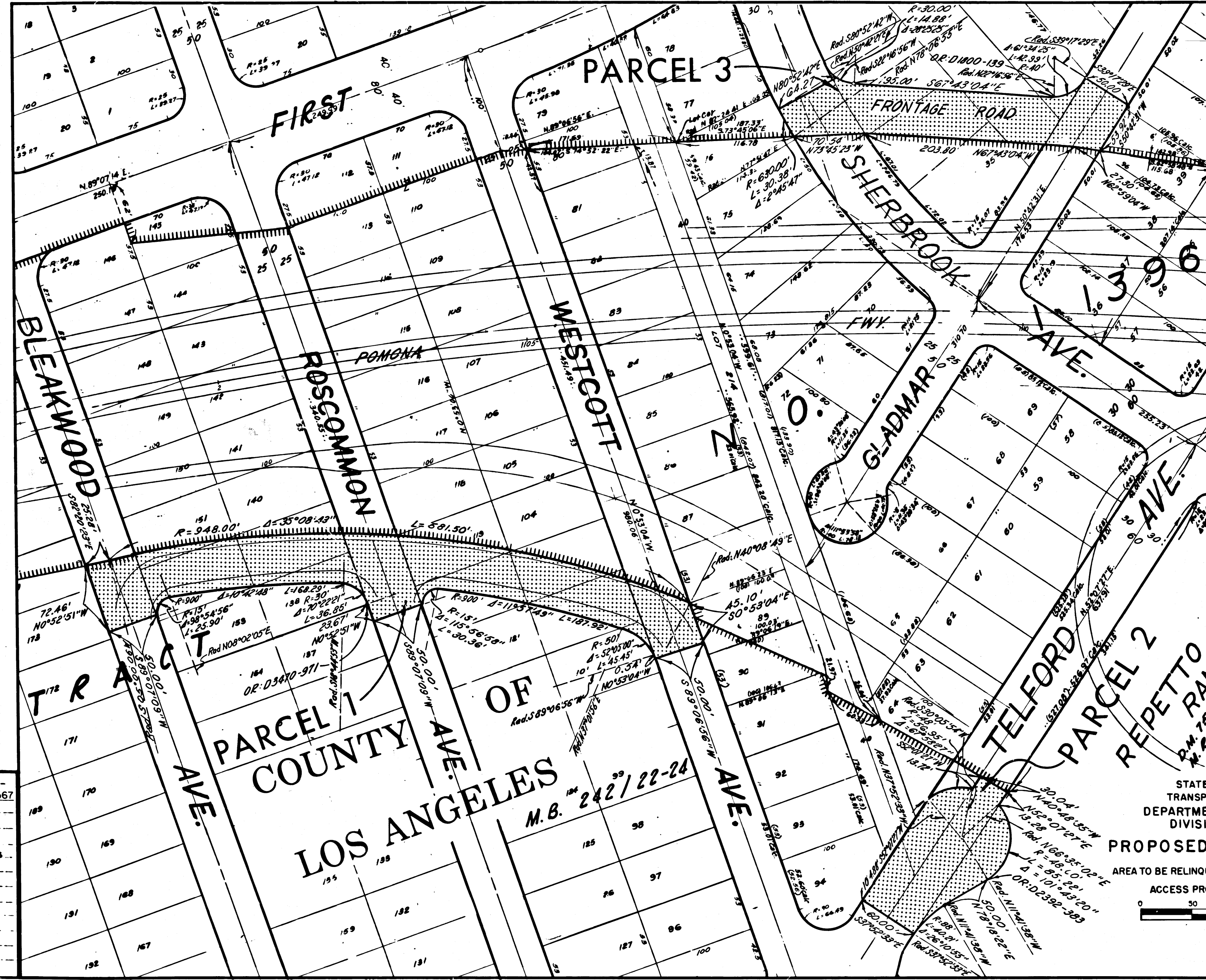
420 5/11-48

DIST	COUNTY	ROUTE	POST MILES	SHEET NO	TOTAL SHEETS
7	LA	60	4.1763	2	8

FILED WITH LOS ANGELES COUNTY RECORDER, RAY E. LEE

FEB 27 1967
DEPUTY DISTRICT ENGINEER

FEB 21 1967
DATE



565-
REL-566-567
DRN BY *MC*
C/LC BY *MM*
CK'D BY *DP*
BASE MAP NOS.
F-1782

REF. MAP NOS.
CCM 215.8

AS BUILT NOS.
165-8, 156-18
155-14

PARCEL 1 OF
COUNTY OF
LOS ANGELES
M.B. 242/22-24

PARCEL 2
REPETTO RANCHO
P.M. 789-21-22
N.E. 6-549

STATE OF CALIFORNIA
TRANSPORTATION AGENCY
DEPARTMENT OF PUBLIC WORKS
DIVISION OF HIGHWAYS
PROPOSED RELINQUISHMENT
AREA TO BE RELINQUISHED SHOWN THUS [shaded box]
ACCESS PROHIBITED [hatched box]
0 50 100 150 200

COUNTY OF LOS ANGELES

BOOK 5 PAGE 43

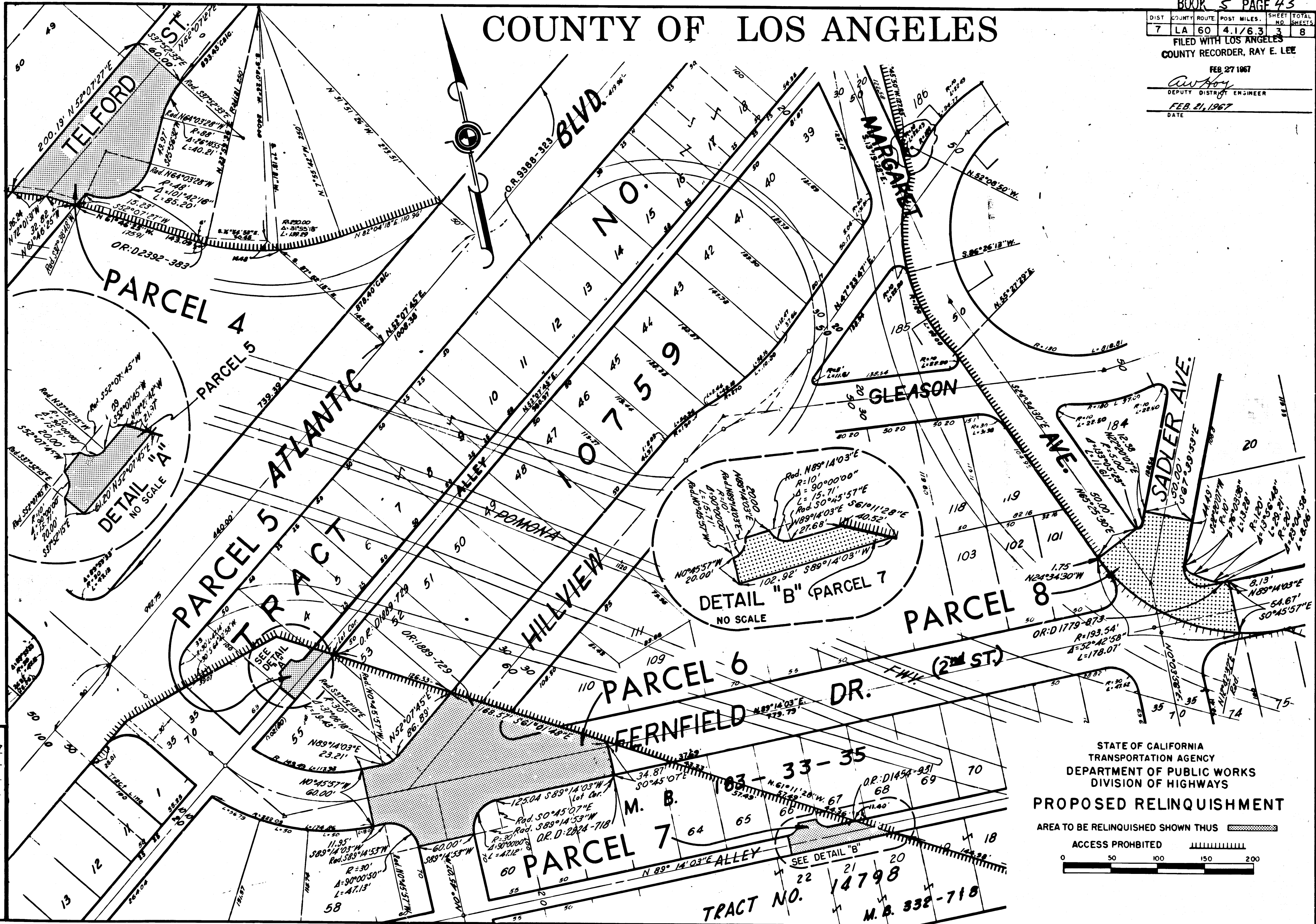
DIST	COUNTY	ROUTE	POST MILES.	SHEET NO.	TOTAL SHEETS
7	LA	60	4.1/6.3	3	8

FILED WITH LOS ANGELES COUNTY RECORDER, RAY E. LEE

FEB 27 1967

Anthony
DEPUTY DISTRICT ENGINEER

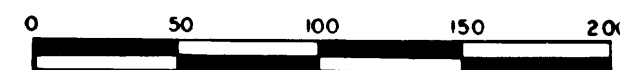
FEB. 21, 1967
DATE



STATE OF CALIFORNIA
TRANSPORTATION AGENCY
DEPARTMENT OF PUBLIC WORKS
DIVISION OF HIGHWAYS
PROPOSED RELINQUISHMENT

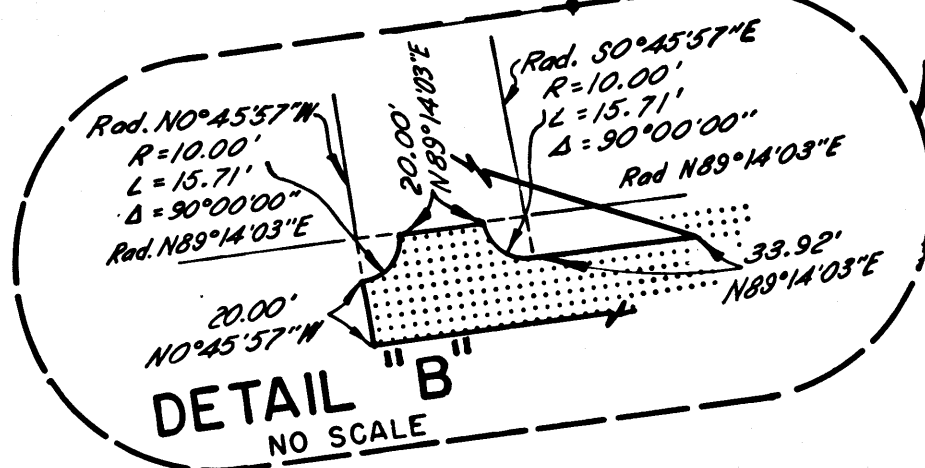
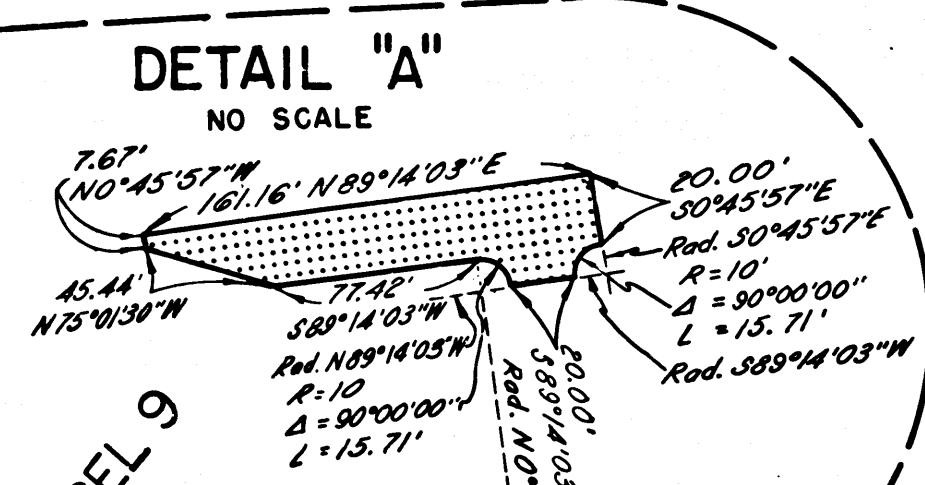
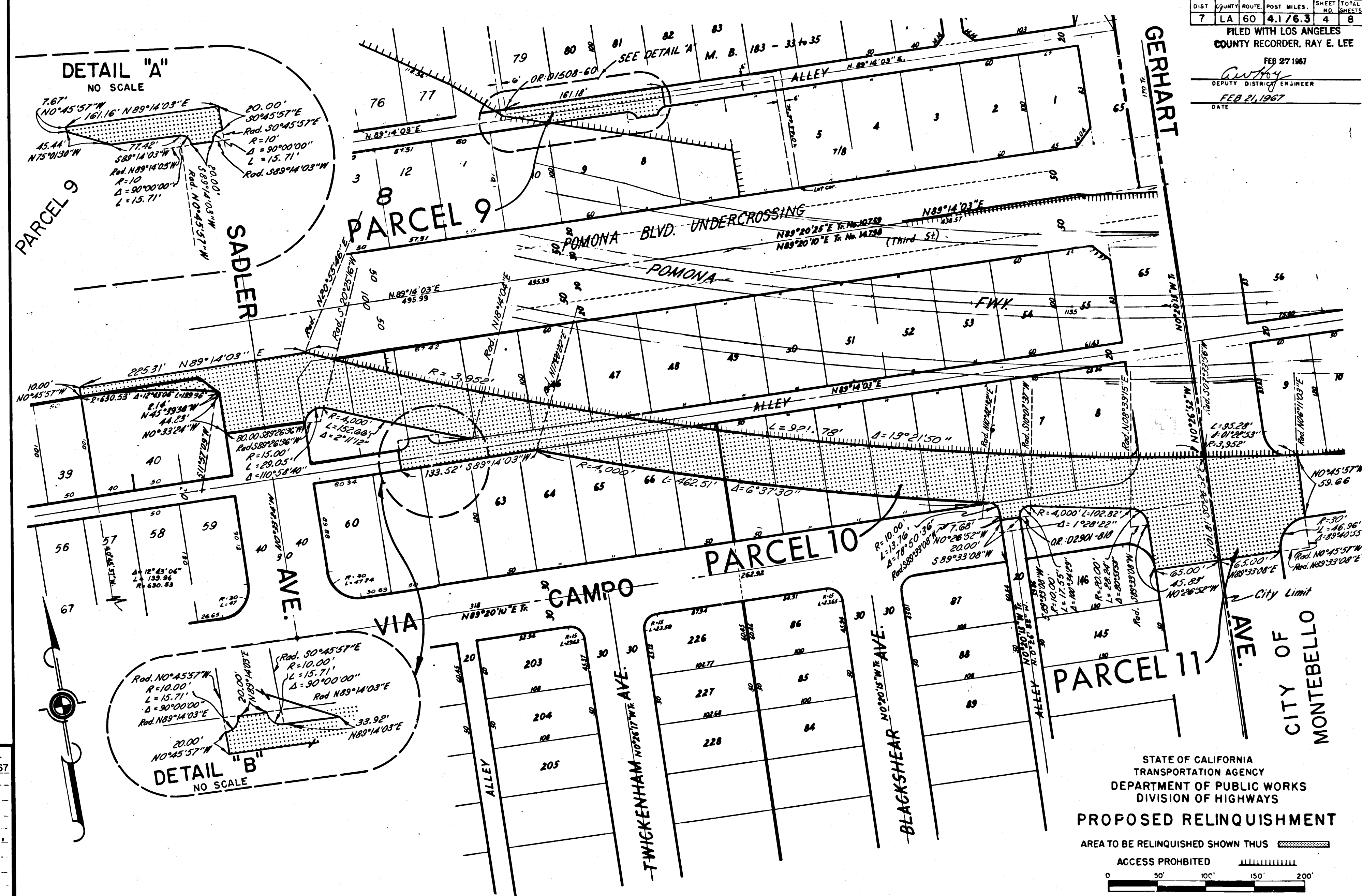
AREA TO BE RELINQUISHED SHOWN THUS

ACCESS PROHIBITED



DIST	COUNTY	ROUTE	POST MILES	SHEET NO.	TOTAL SHEETS
7	LA	60	4.176.3	4	8

FILED WITH LOS ANGELES COUNTY RECORDER, RAY E. LEE
 FEB 27 1967
 DEPUTY DISTRICT ENGINEER
 FEB 21, 1967
 DATE



565-REL-566-567
 DRN BY M.C.
 C'LC BY M.M.
 CK'D BY D.P.
 BASE MAP NO'S F-1783,
 REF. MAP NO'S CGM 215.8
 AS BUILT NO'S 165-8, 156-18, 155-14

COUNTY OF LOS ANGELES

STATE OF CALIFORNIA
 TRANSPORTATION AGENCY
 DEPARTMENT OF PUBLIC WORKS
 DIVISION OF HIGHWAYS
PROPOSED RELINQUISHMENT
 AREA TO BE RELINQUISHED SHOWN THUS
 ACCESS PROHIBITED
 0 50' 100' 150' 200'

DIST	COUNTY	ROUTE	POST MILES	SHEET NO.	TOTAL SHEETS
7	LA	60	4.1/6.3	5	8

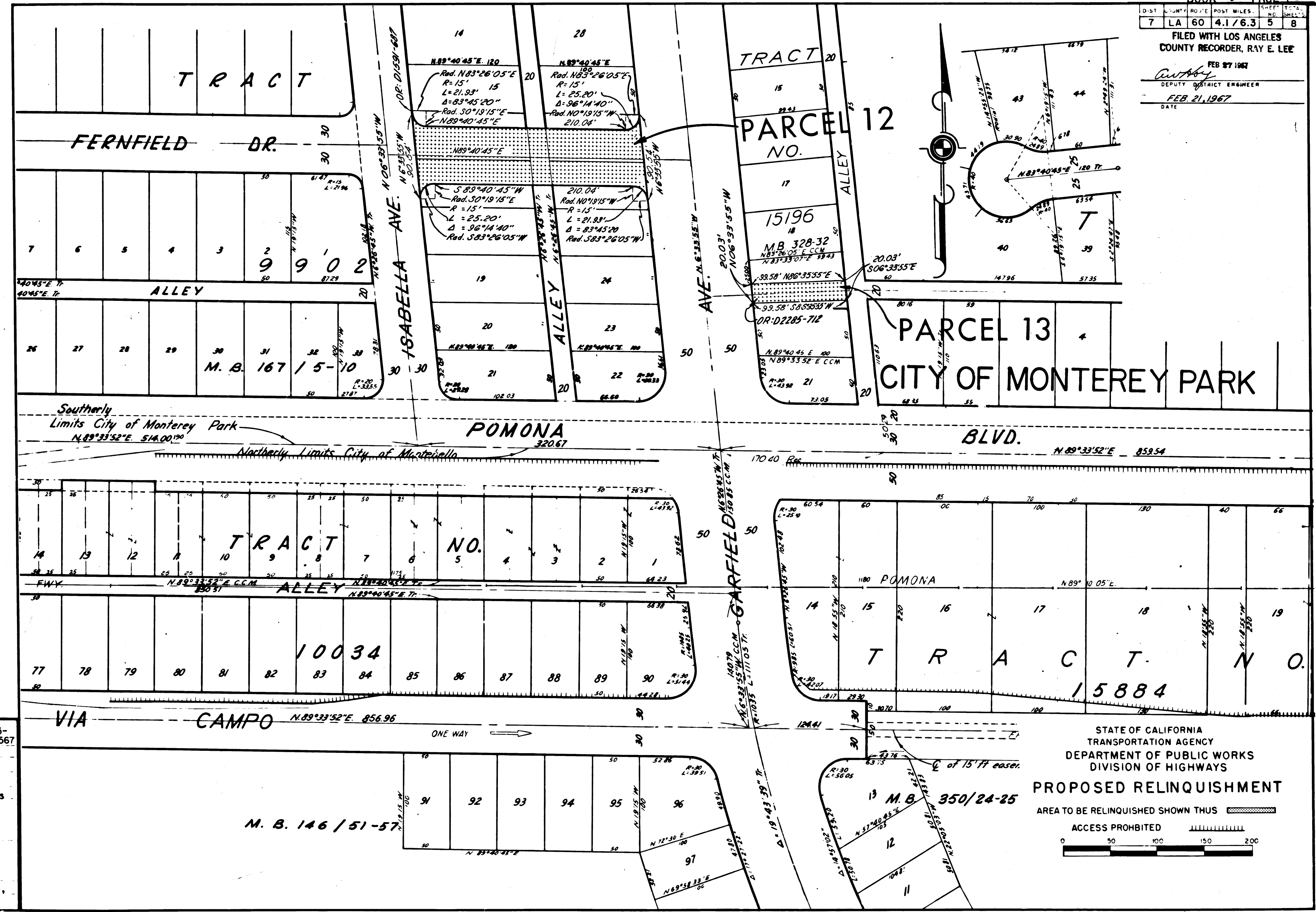
FILED WITH LOS ANGELES COUNTY RECORDER, RAY E. LEE

FEB 27 1967

DEPUTY DISTRICT ENGINEER

FEB. 21, 1967

DATE



565-
REL-566-567
DRTN BY M.C.
C/LC BY M.M.
CK'D BY D.P.
BASE MAP NO'S
F-1784
REF. MAP NO'S
CCM 215.8
AS BUILT NO'S
165-8, 156-18,
155-14

STATE OF CALIFORNIA
TRANSPORTATION AGENCY
DEPARTMENT OF PUBLIC WORKS
DIVISION OF HIGHWAYS
PROPOSED RELINQUISHMENT
AREA TO BE RELINQUISHED SHOWN THUS
ACCESS PROHIBITED
0 50 100 150 200

DIST	COUNTY	ROUTE	POST MILES	SHEET NO.	TOTAL SHEETS
7	LA	60	4.1 / 6.3	6	8

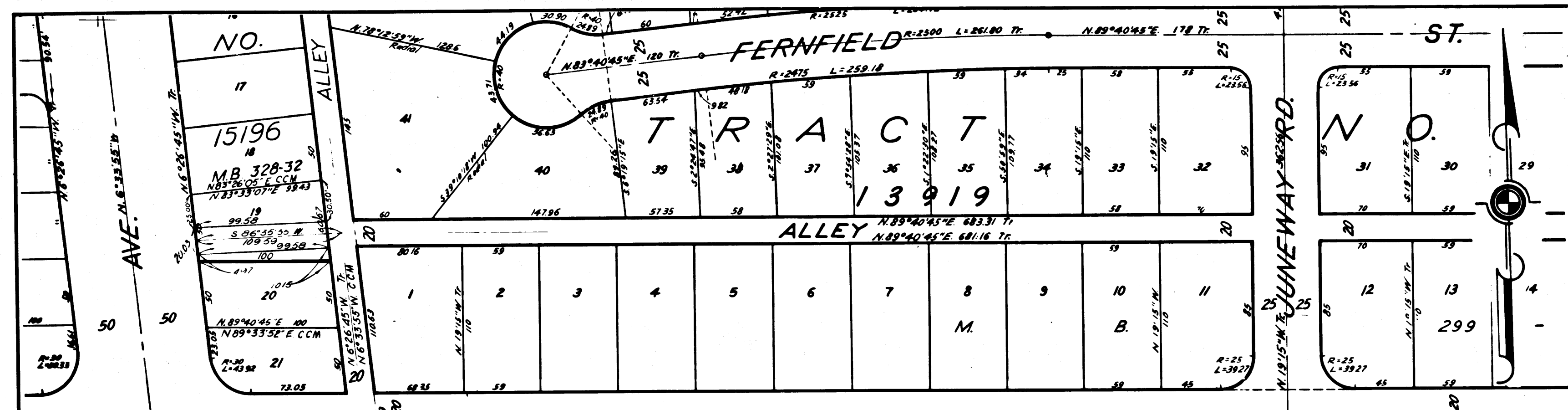
FILED WITH LOS ANGELES COUNTY RECORDER, RAY E. LEE

FEB 27 1967

DEPUTY DISTRICT ENGINEER

FEB 21 1967

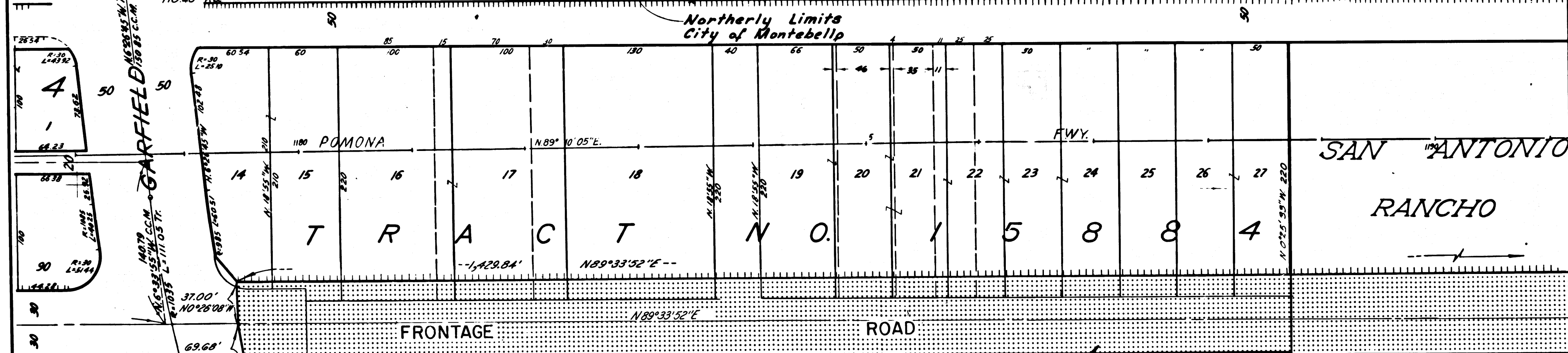
DATE



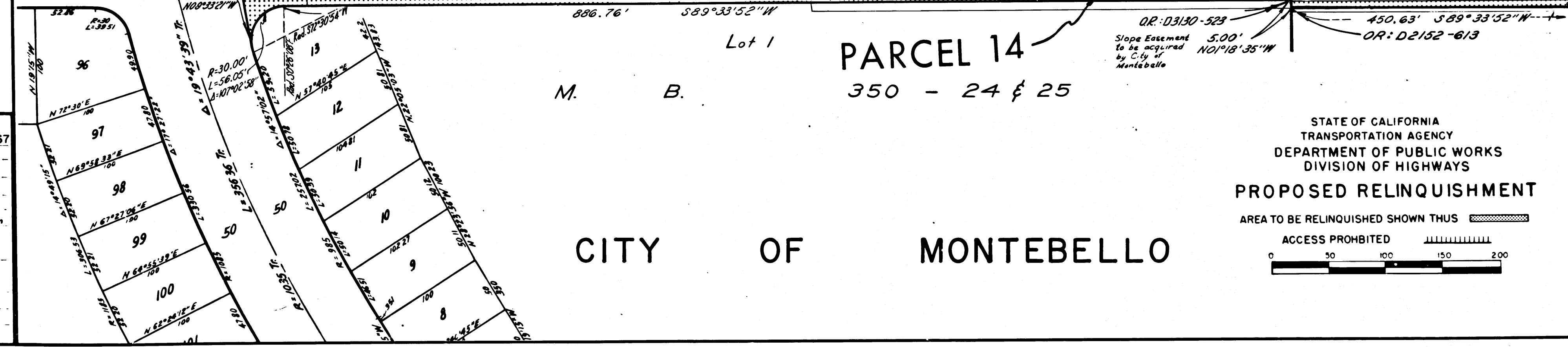
Southerly Limits City of Monterey Park

N. 89° 33' 52" E. 859.54

POMONA BLVD. 721.52



Northerly Limits City of Montebello



Lot 1

PARCEL 14

350 - 24 & 25

OR: D3130-523

Slope Easement to be acquired by City of Montebello

5.00'

N01°18'35"W

450.63' S89°33'52"W

OR: D2152-613

565-REL-566-567

DWN BY MC

C/LC BY MM

CKD BY DP

BASE MAP NOS F-1784, F-1785,

REF. MAP NOS CCM 215.8

AS BUILT NOS 165-8, 156-18, 155-14

STATE OF CALIFORNIA

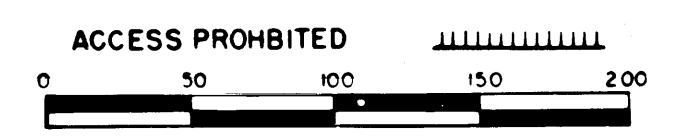
TRANSPORTATION AGENCY

DEPARTMENT OF PUBLIC WORKS

DIVISION OF HIGHWAYS

PROPOSED RELINQUISHMENT

AREA TO BE RELINQUISHED SHOWN THUS



CITY OF MONTEBELLO

DIST	COUNTY	ROUTE	POST MILES	SHEET NO.	TOTAL SHEETS
7	LA	60	4.1/6.3	7	8

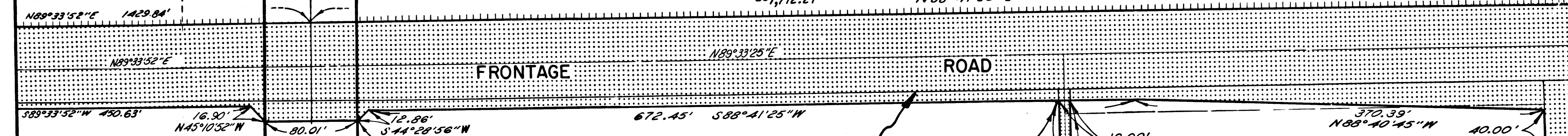
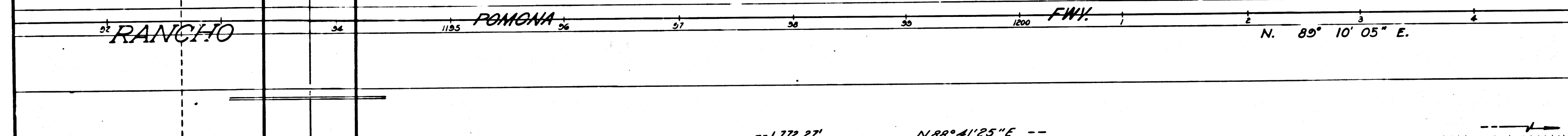
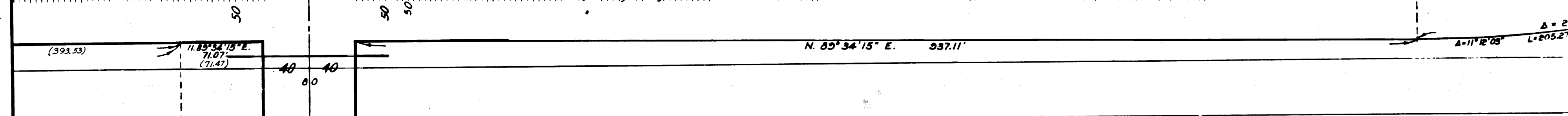
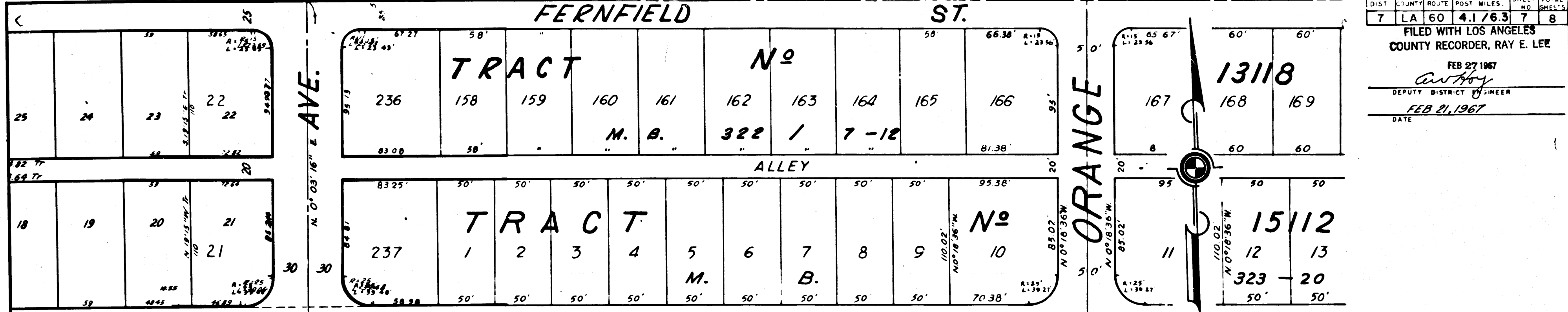
FILED WITH LOS ANGELES COUNTY RECORDER, RAY E. LEE

FEB 27 1967

DEPUTY DISTRICT ENGINEER

FEB 21 1967

DATE



565-
REL-566-567
DRW BY MC
C/LC BY MM
CKD BY DP
BASE MAP NO'S
F-1785

REF. MAP NO'S
CCM 215.8

AS BUILT NO'S
65-8, 156-18,
155-14

WILCOX

CITY OF MONTEBELLO

SAN

PARCEL 14 ANTONIO

PARCEL 15

REPETTO P. 1 - 389 (M.R. 5-549) D.M.

RANCHO 759 / 21-22 (R.F. 523)

STATE OF CALIFORNIA
TRANSPORTATION AGENCY
DEPARTMENT OF PUBLIC WORKS
DIVISION OF HIGHWAYS
PROPOSED RELINQUISHMENT
AREA TO BE RELINQUISHED SHOWN THUS
ACCESS PROHIBITED
0 50 100 150 200

DIST	COUNTY	ROUTE	POST MILES	SHEET NO.	TOTAL SHEETS
7	LA	60	4.1763	8	8

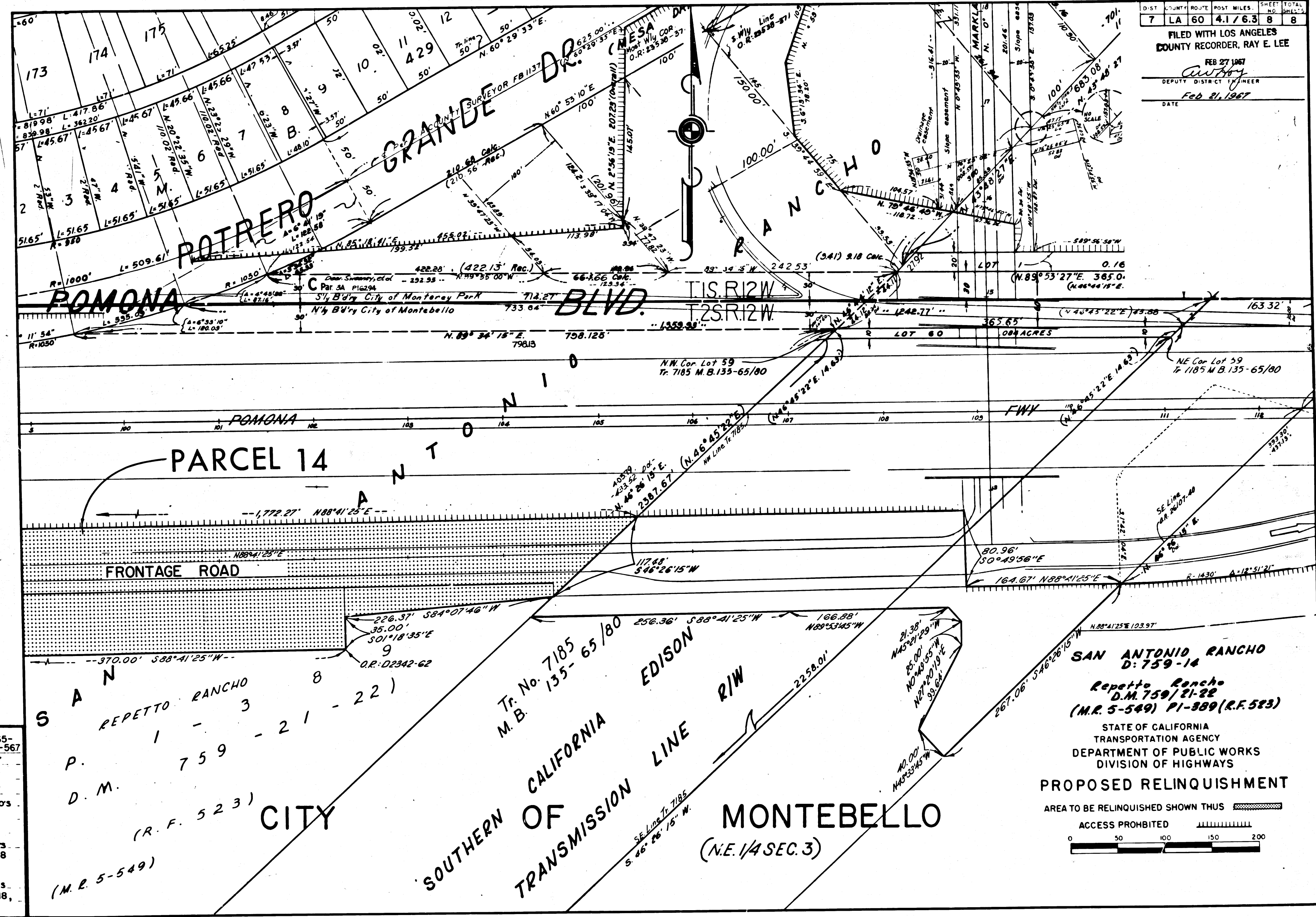
FILED WITH LOS ANGELES COUNTY RECORDER, RAY E. LEE

FEB 27 1967

DEPUTY DISTRICT ENGINEER

FEB 21 1967

DATE



565-
REL-566-567
DRN BY M.C.
CLC BY M.M.
CK'D BY D.P.
BASE MAP NOS.
F-1785

REF. MAP NOS.
CCM 215.8

AS BUILT NOS.
165-8, 156-18,
155-14

SAN ANTONIO RANCHO
D: 759-14

Repetto Rancho
D.M. 759/21-22
(M.R. 5-549) P1-389 (R.F. 523)

STATE OF CALIFORNIA
TRANSPORTATION AGENCY
DEPARTMENT OF PUBLIC WORKS
DIVISION OF HIGHWAYS

PROPOSED RELINQUISHMENT

AREA TO BE RELINQUISHED SHOWN THUS

ACCESS PROHIBITED

0 50 100 150 200