

DIST.	COUNTY	ROUTE	POST MILES	SHEET NO.	TOTAL SHEETS
7	LA	101	7.3-8.2	1	2

STATE OF CALIFORNIA
 TRANSPORTATION AGENCY
 DEPARTMENT OF PUBLIC WORKS
 DIVISION OF HIGHWAYS

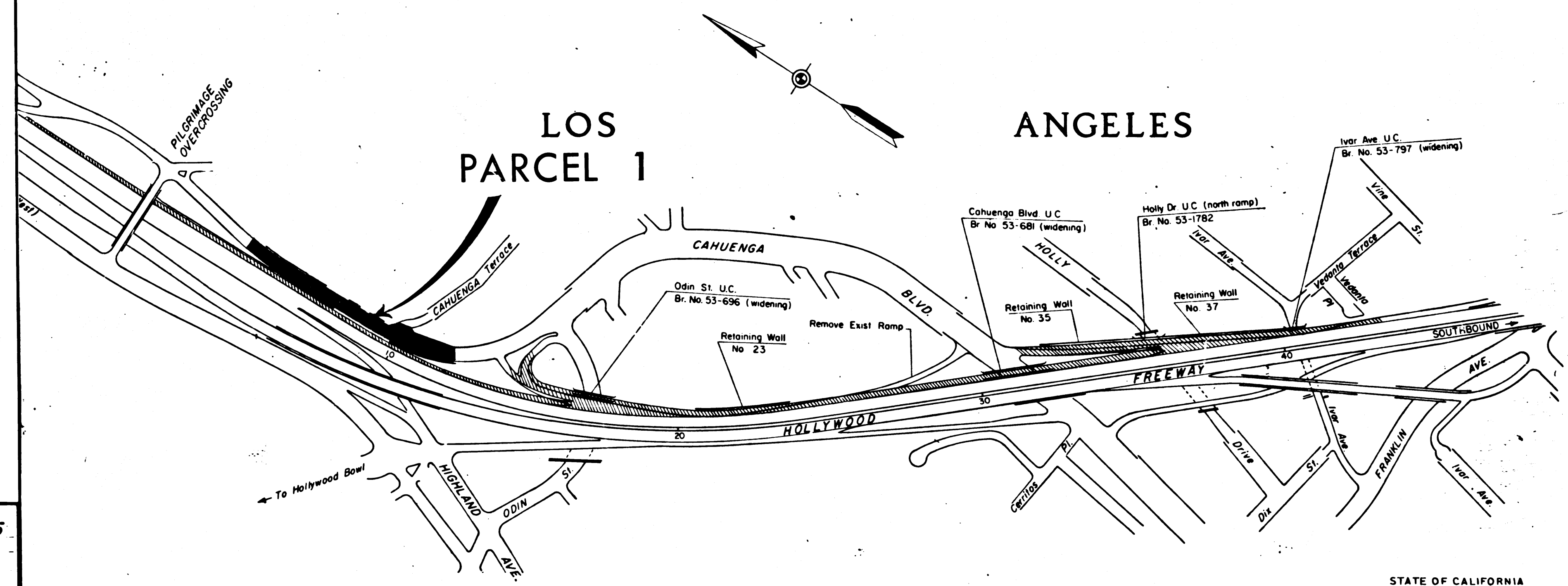
Anthony
 DEPUTY DISTRICT ENGINEER
 Mar. 21, 1967
 DATE

RIGHT OF WAY MAPS OF
STATE HIGHWAY

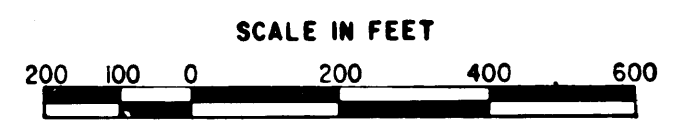
In Los Angeles County In Los Angeles on Hollywood Freeway between
 Odin Street Undercrossing and Pilgrimage Overcrossing

2641

RECORDED
 AT REQUEST OF
 DEPT. OF PUBLIC WORKS
 MAR 23, 1967
 36 MIN. PAST 1 PM
 IN BOOK 5
 AT PAGE 49
 OF STATE HIGHWAY MAPS
 LOS ANGELES COUNTY, CALIF.
 RAY E. LEE
 COUNTY RECORDER
 BY *J. D. ...*
 Deputy *FRB*



REL-505
 DRN BY J.G.B.
 C.L.C. BY J.G.B.
 CKD BY T.K.
 BASE MAP NO'S
 F-1379 F-1380
 REF. MAP NO'S
 CCM 13.39
 AS BUILT NO'S
 163-6



STATE OF CALIFORNIA
 TRANSPORTATION AGENCY
 DEPARTMENT OF PUBLIC WORKS
 DIVISION OF HIGHWAYS
PROPOSED RELINQUISHMENT

DIST.	COUNTY	ROUTE	POST MILES	SHEET No.	TOTAL SHEETS
7	L.A.	101	23.82	2	2

FILED WITH LOS ANGELES COUNTY RECORDER, RAY E. LEE

MAR 23 1967

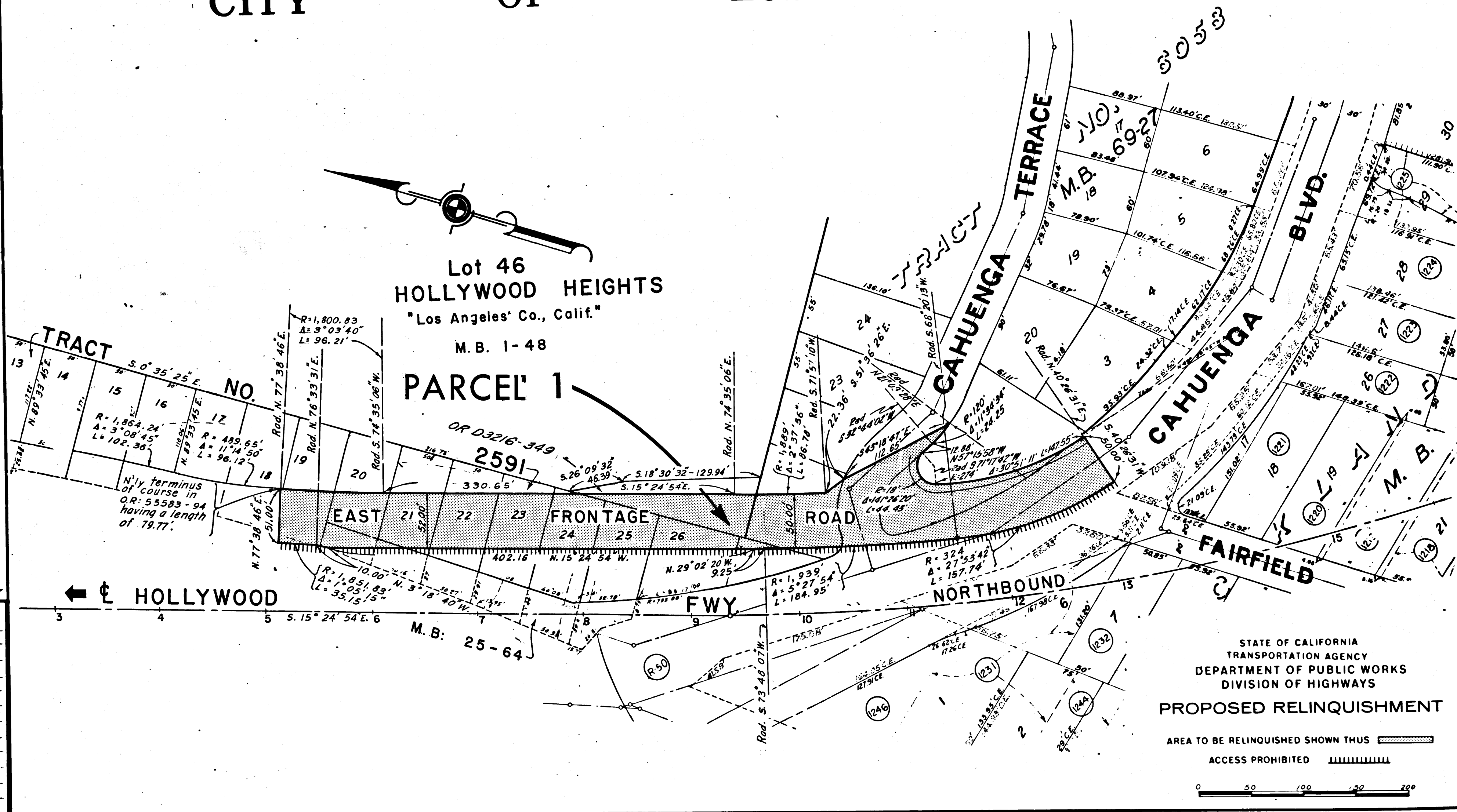
DEPUTY DISTRICT ENGINEER

Mar. 21, 1967

DATE

CITY OF LOS ANGELES

Lot 46
 HOLLYWOOD HEIGHTS
 "Los Angeles" Co., Calif.
 M.B. 1-48
PARCEL 1



REV. 2-27-67

REL-505

DRN BY R. Kelly

C'LC BY J.G.B.

CKD BY T. K.

BASE MAP NOS.

F-1379/F-1380

REF. MAP NOS.

CCM 13-39

AS BUILT NOS.

163-6

STATE OF CALIFORNIA
 TRANSPORTATION AGENCY
 DEPARTMENT OF PUBLIC WORKS
 DIVISION OF HIGHWAYS
PROPOSED RELINQUISHMENT

AREA TO BE RELINQUISHED SHOWN THUS

ACCESS PROHIBITED

