

DIST	COUNTY	ROUTE	POST MILES	SHEET NO	TOTAL SHEETS
7	LA	7	23.9/24.8	1	8
			LA 60	28/41	

STATE OF CALIFORNIA
 TRANSPORTATION AGENCY
 DEPARTMENT OF PUBLIC WORKS
 DIVISION OF HIGHWAYS

aw Hoy
 DEPUTY DISTRICT ENGINEER
 Mar. 21, 1967
 DATE

RIGHT OF WAY MAPS OF
STATE HIGHWAY

In Los Angeles County near Monterey Park on Route 60 between 3rd Street and Woods Avenue
 and on Route 7 between Olympic Boulevard and Floral Drive

2642

RECORDED
 AT REQUEST OF
 DEPT. OF PUBLIC WORKS
 MAR 23, 1967
 36 MIN. PAST 1 PM
 IN BOOK 5
 AT PAGE 51
 OF STATE HIGHWAY MAPS
 LOS ANGELES COUNTY, CALIF.
 BY RAY E. LEE
 COUNTY RECORDER
J. J. Lee
 Deputy REC'D

COUNTY

OF

MONTEREY

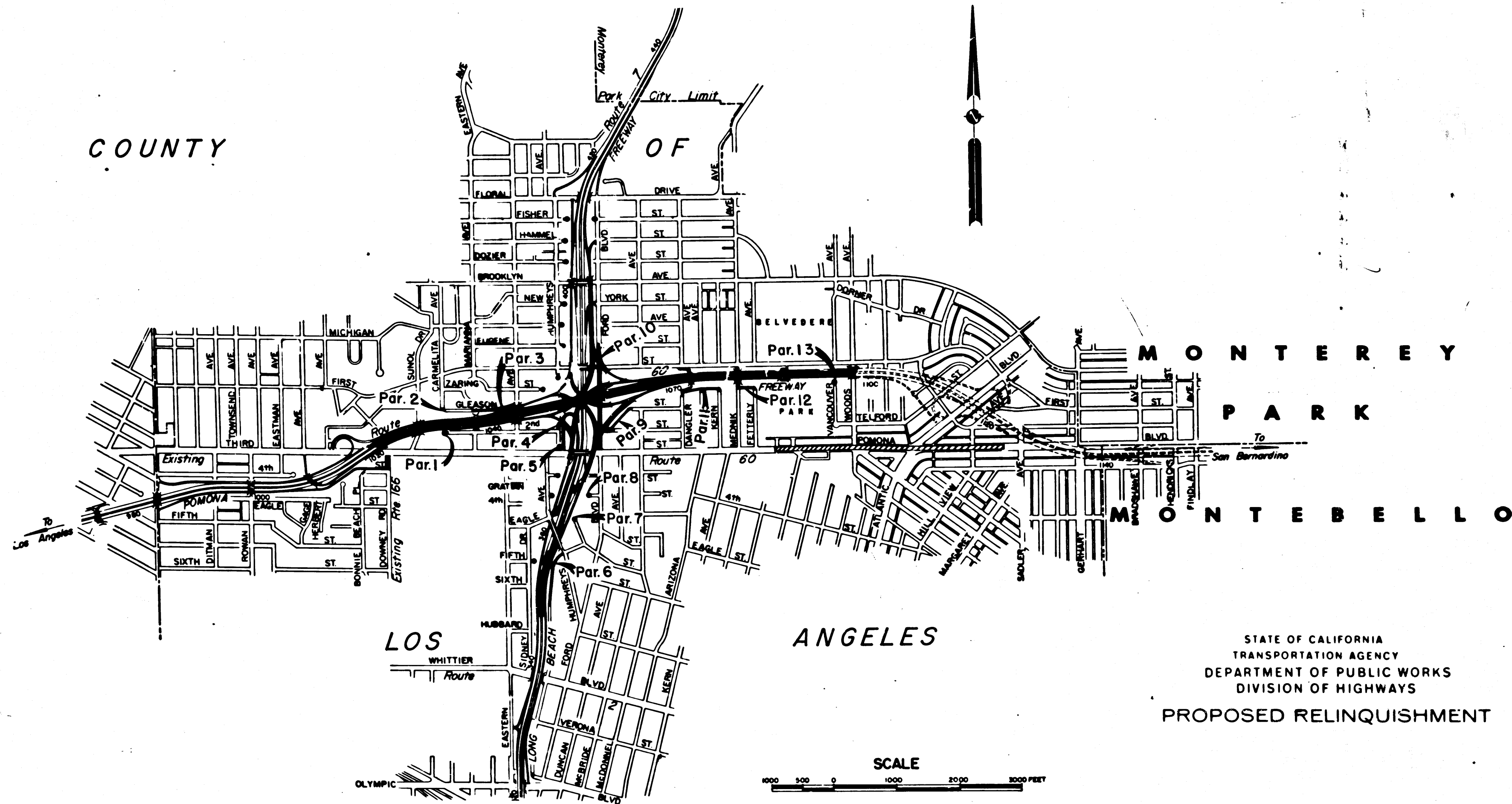
PARK

MONTEBELLO

LOS ANGELES

STATE OF CALIFORNIA
 TRANSPORTATION AGENCY
 DEPARTMENT OF PUBLIC WORKS
 DIVISION OF HIGHWAYS
 PROPOSED RELINQUISHMENT

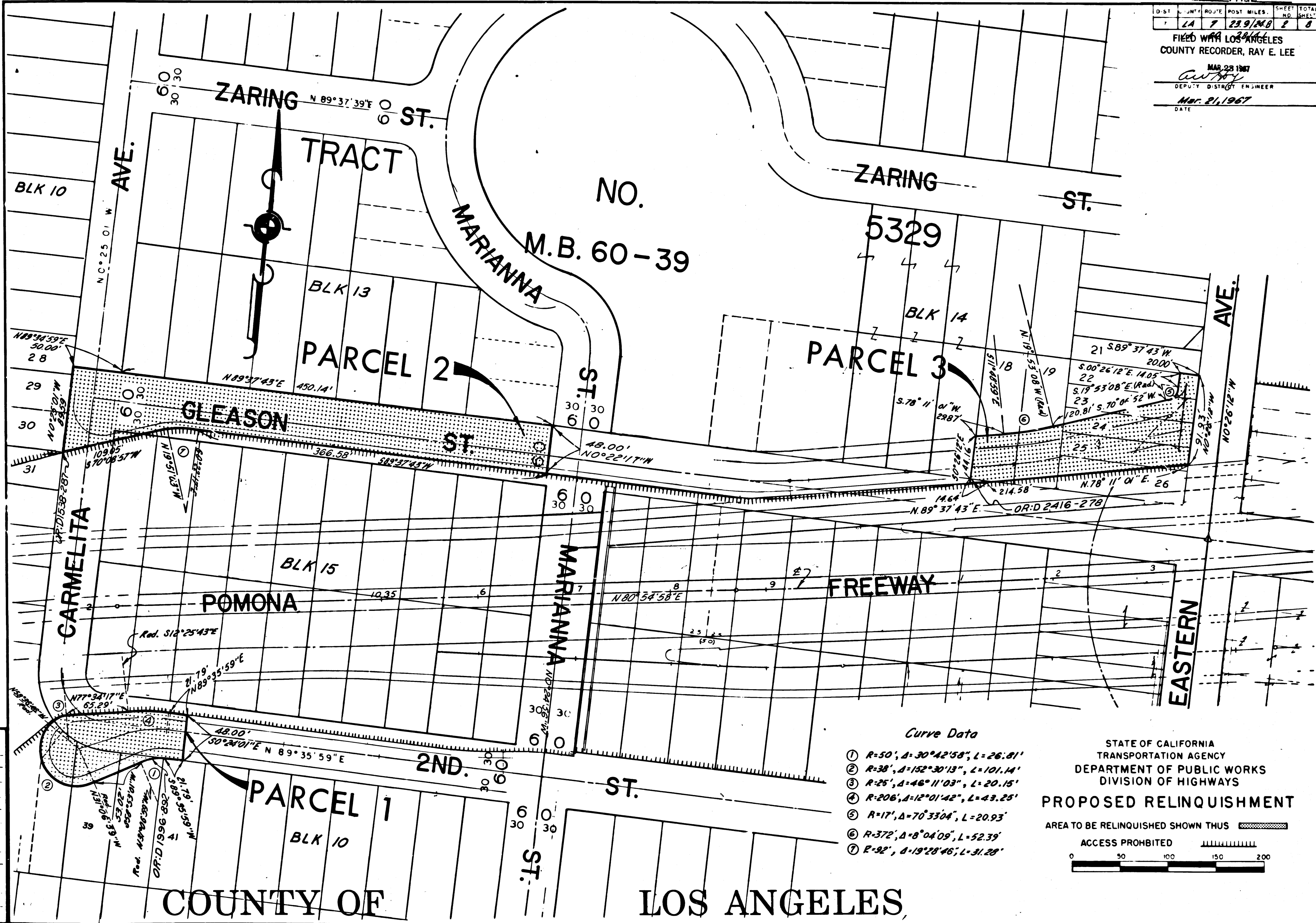
REL-564
 DWT BY EEN
 C/LC BY LFF
 CK'D BY GDM
 BASE MAP NO'S
 E-1526, F-1527
 & F-1780
 REF. MAP NO'S
 CCM 215.6, 215.7
 AS BUILT NO'S
 159-12



DIST.	COUNTY	ROUTE	POST MILES.	SHEET NO.	TOTAL SHEETS
7	LA	7	23.9/24.0	2	8



FILED WITH LOS ANGELES COUNTY RECORDER, RAY E. LEE

MAR 28 1967
 DEPUTY DISTRICT ENGINEER
 DATE



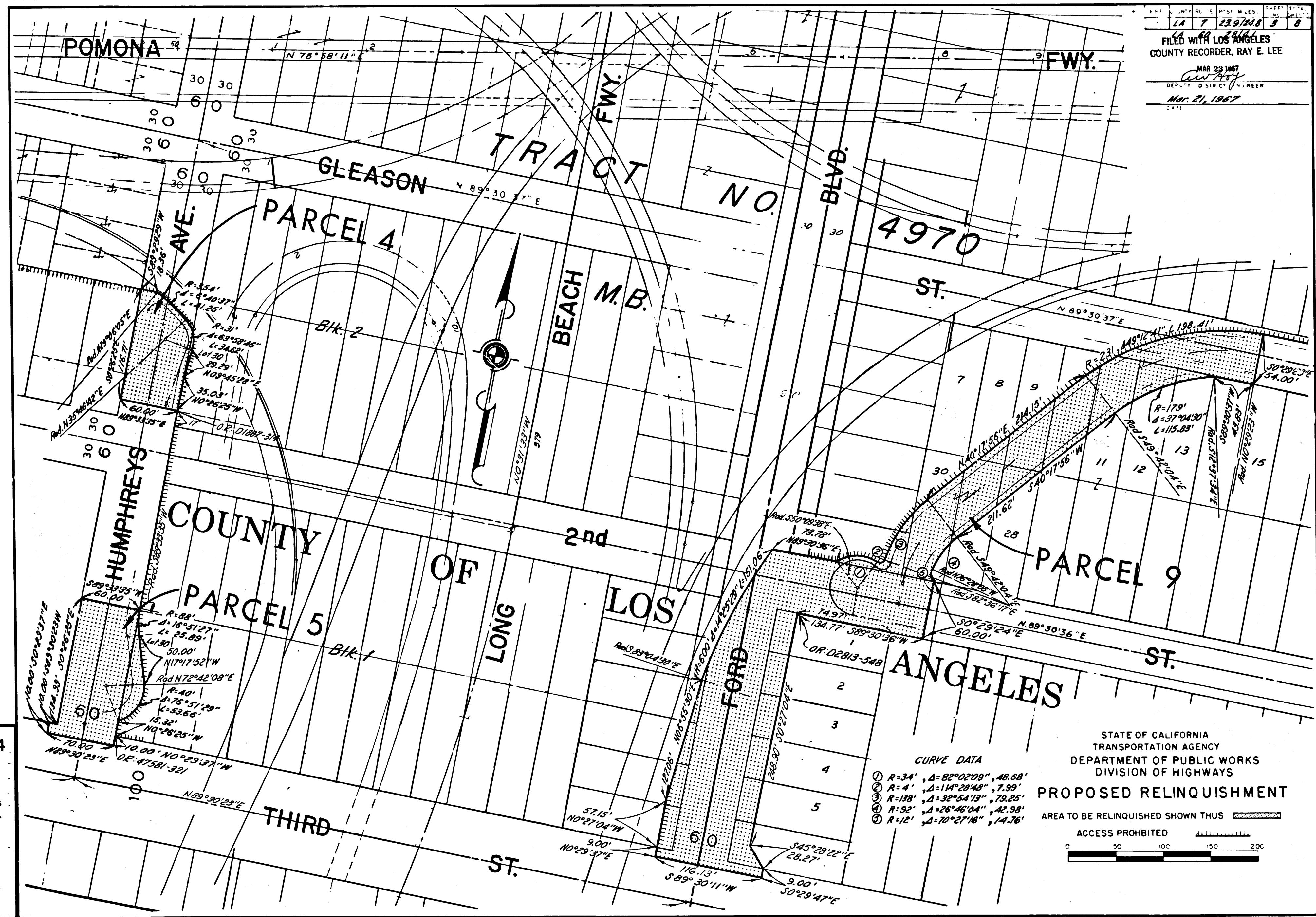
REL-564
 DRN BY EEH
 C/LC BY JFF
 CK'D BY 60W
 BASE MAP NOS
 F-1780
 REF. MAP NOS
 C.C.M. 215.7
 AS BUILT NOS
 159-12

- Curve Data
- ① R=50', Δ=30°42'58", L=26.81'
 - ② R=38', Δ=152°30'13", L=101.14'
 - ③ R=25', Δ=48°11'03", L=20.15'
 - ④ R=206', Δ=12°01'42", L=43.25'
 - ⑤ R=17', Δ=70°33'04", L=20.93'
 - ⑥ R=372', Δ=8°04'09", L=52.39'
 - ⑦ R=92', Δ=19°28'46", L=31.28'

STATE OF CALIFORNIA
 TRANSPORTATION AGENCY
 DEPARTMENT OF PUBLIC WORKS
 DIVISION OF HIGHWAYS
PROPOSED RELINQUISHMENT
 AREA TO BE RELINQUISHED SHOWN THUS 
 ACCESS PROHIBITED 
 0 50 100 150 200

COUNTY OF LOS ANGELES

FILED WITH LOS ANGELES COUNTY RECORDER, RAY E. LEE
 MAR 23 1967
 DEPUTY DISTRICT CLERK
 MAR 21 1967



REL-564
 DRN BY EEH
 C.L.C. BY JFF
 CK'D BY GDN
 BASE MAP NOS
 F-1526
 REF. MAP NOS
 C.C.M. 215.7
 AS BUILT NOS
 159-12

CURVE DATA

①	R=34'	Δ=82°02'09"	48.68'
②	R=4'	Δ=144°28'48"	7.99'
③	R=138'	Δ=32°54'13"	79.25'
④	R=92'	Δ=26°46'04"	42.98'
⑤	R=12'	Δ=70°27'16"	14.76'

STATE OF CALIFORNIA
 TRANSPORTATION AGENCY
 DEPARTMENT OF PUBLIC WORKS
 DIVISION OF HIGHWAYS
PROPOSED RELINQUISHMENT
 AREA TO BE RELINQUISHED SHOWN THUS
 ACCESS PROHIBITED
 0 50 100 150 200

DIST	COUNTY	ROUTE	POST MILES	SHEET NO	TOTAL SHEETS
7	LA	7	23.9/24.8	4	8

LA 60 25/26
FILED WITH LOS ANGELES
COUNTY RECORDER, RAY E. LEE
MAR 23 1967
DEPUTY DISTRICT ENGINEER
Mar. 1, 1967
DATE

AVE.

HUMPHREYS

FIRST

ZARING

EUGENE

FIRST

ZARING

FWY.

LONG BEACH

BLVD.

FORD

N. 89° 31' 43" E.

N. 89° 31' 22" E.

N. 89° 30' 57" E.

N. 89° 30' 37" E.

ST.

ST.

ST.

TRACT NO. 2396
M.B. 23-9

PARCEL 10

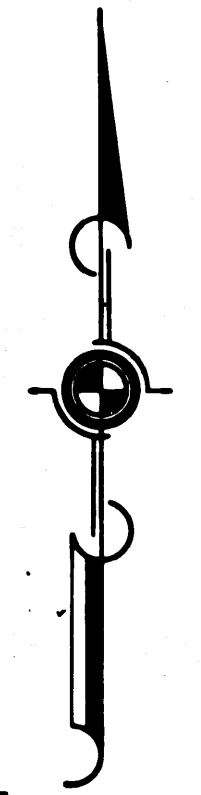
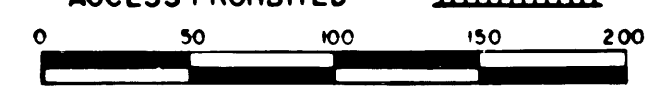
OR: D 1756 - 294

COUNTY OF LOS ANGELES

ANGELES

STATE OF CALIFORNIA
TRANSPORTATION AGENCY
DEPARTMENT OF PUBLIC WORKS
DIVISION OF HIGHWAYS
PROPOSED RELINQUISHMENT
AREA TO BE RELINQUISHED SHOWN THUS [hatched box]

ACCESS PROHIBITED [dashed line symbol]



REL-564
DWN BY EEN
C/LC BY JFF
CK'D BY GDM
BASE MAP NO'S
F-1527 & F-1780
REF. MAP NO'S
CCM 215.7
AS BUILT NO'S
159-12

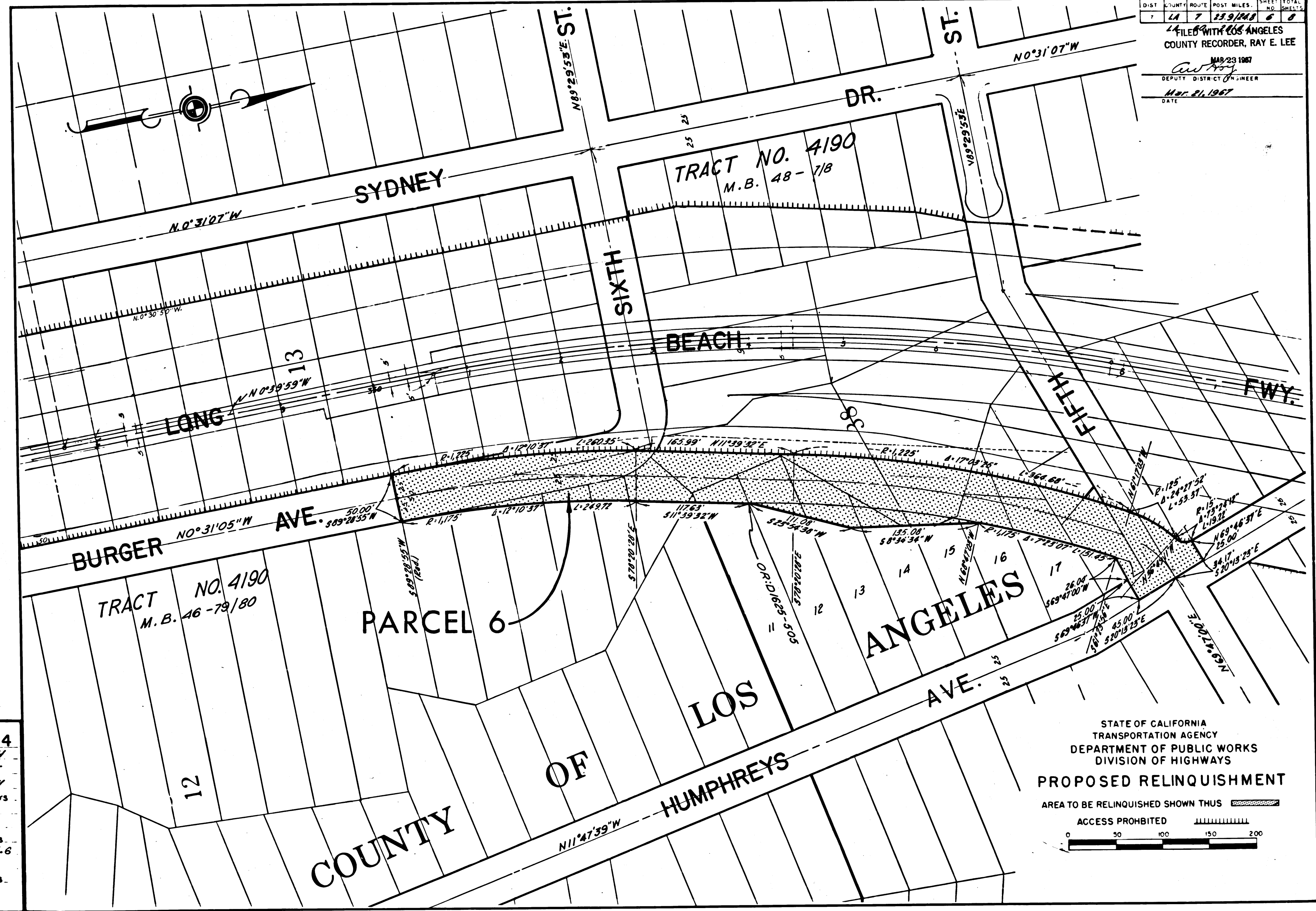
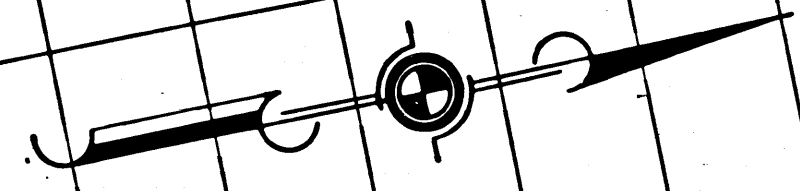
DIST.	COUNTY	ROUTE	POST MILES.	SHEET NO.	TOTAL SHEETS
7	LA	7	23.9/24.8	6	8

FILED WITH LOS ANGELES COUNTY RECORDER, RAY E. LEE

MAR 23 1967

DEPUTY DISTRICT ENGINEER

DATE



REL-564
 DRN BY ECH
 C'LC BY JFF
 CK'D BY GDM
 BASE MAP NO'S
 F-1526

REF. MAP NO'S
 CCM 215.6

AS BUILT NO'S
 159-12

STATE OF CALIFORNIA
 TRANSPORTATION AGENCY
 DEPARTMENT OF PUBLIC WORKS
 DIVISION OF HIGHWAYS

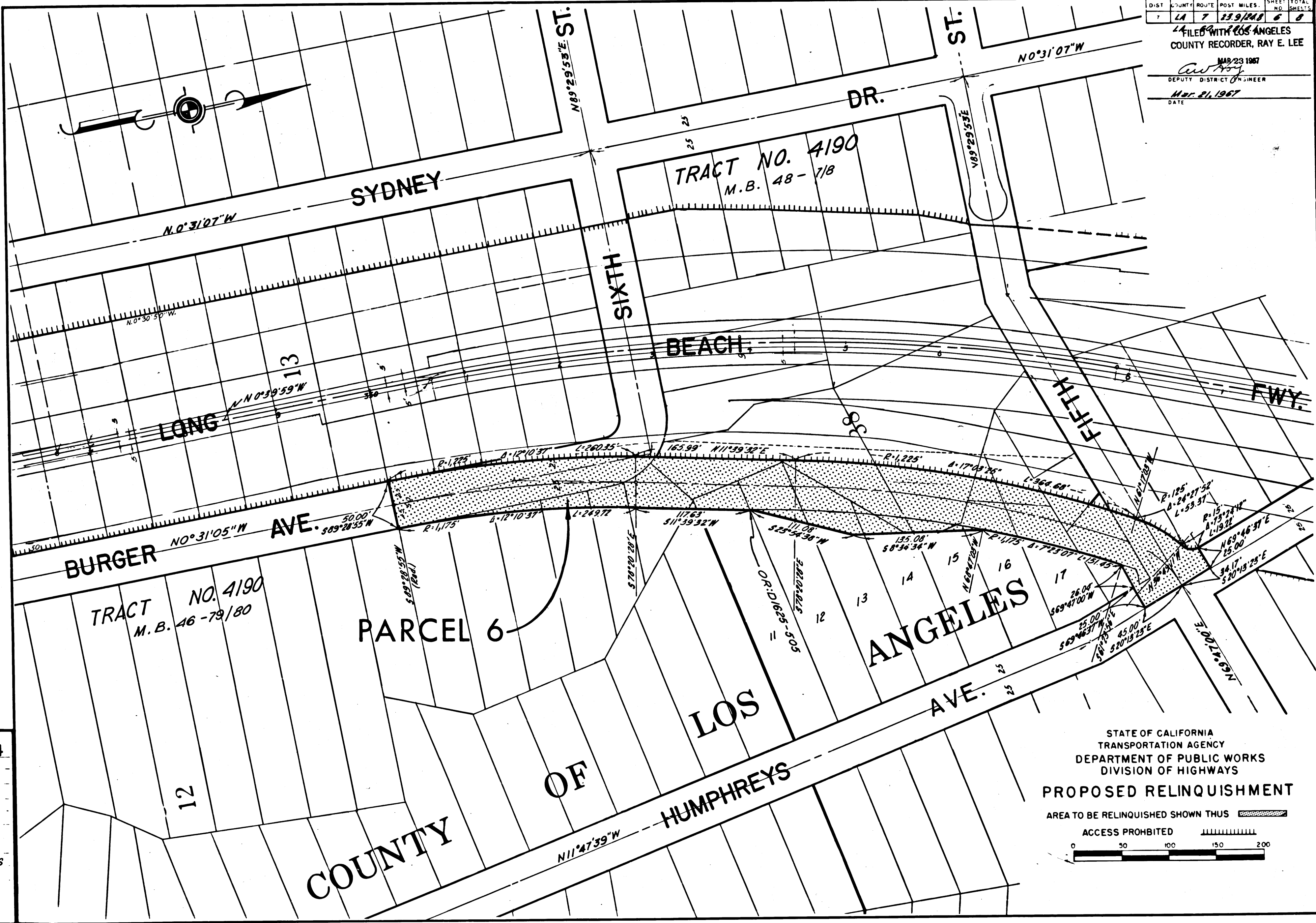
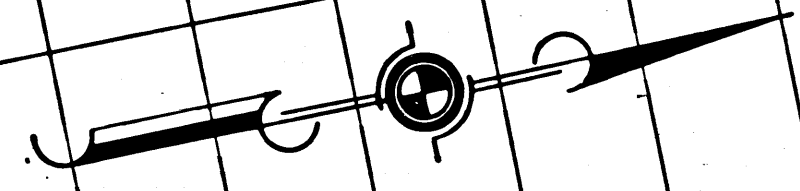
PROPOSED RELINQUISHMENT

AREA TO BE RELINQUISHED SHOWN THUS

ACCESS PROHIBITED

DIST.	COUNTY	ROUTE	POST MILES.	SHEET NO.	TOTAL SHEETS
7	LA	7	23.9/24.8	6	8

FILED WITH LOS ANGELES COUNTY RECORDER, RAY E. LEE
 MAR 23 1967
Ray E. Lee
 DEPUTY DISTRICT ENGINEER
 Mar. 21, 1967
 DATE



REL-564
 DRN BY E.E.H.
 C.L.C. BY J.F.F.
 C.K.D. BY G.D.W.
 BASE MAP NO'S
 F-1526

REF. MAP NO'S
 C.C.M. 215.6

AS BUILT NO'S
 159-12

STATE OF CALIFORNIA
 TRANSPORTATION AGENCY
 DEPARTMENT OF PUBLIC WORKS
 DIVISION OF HIGHWAYS

PROPOSED RELINQUISHMENT

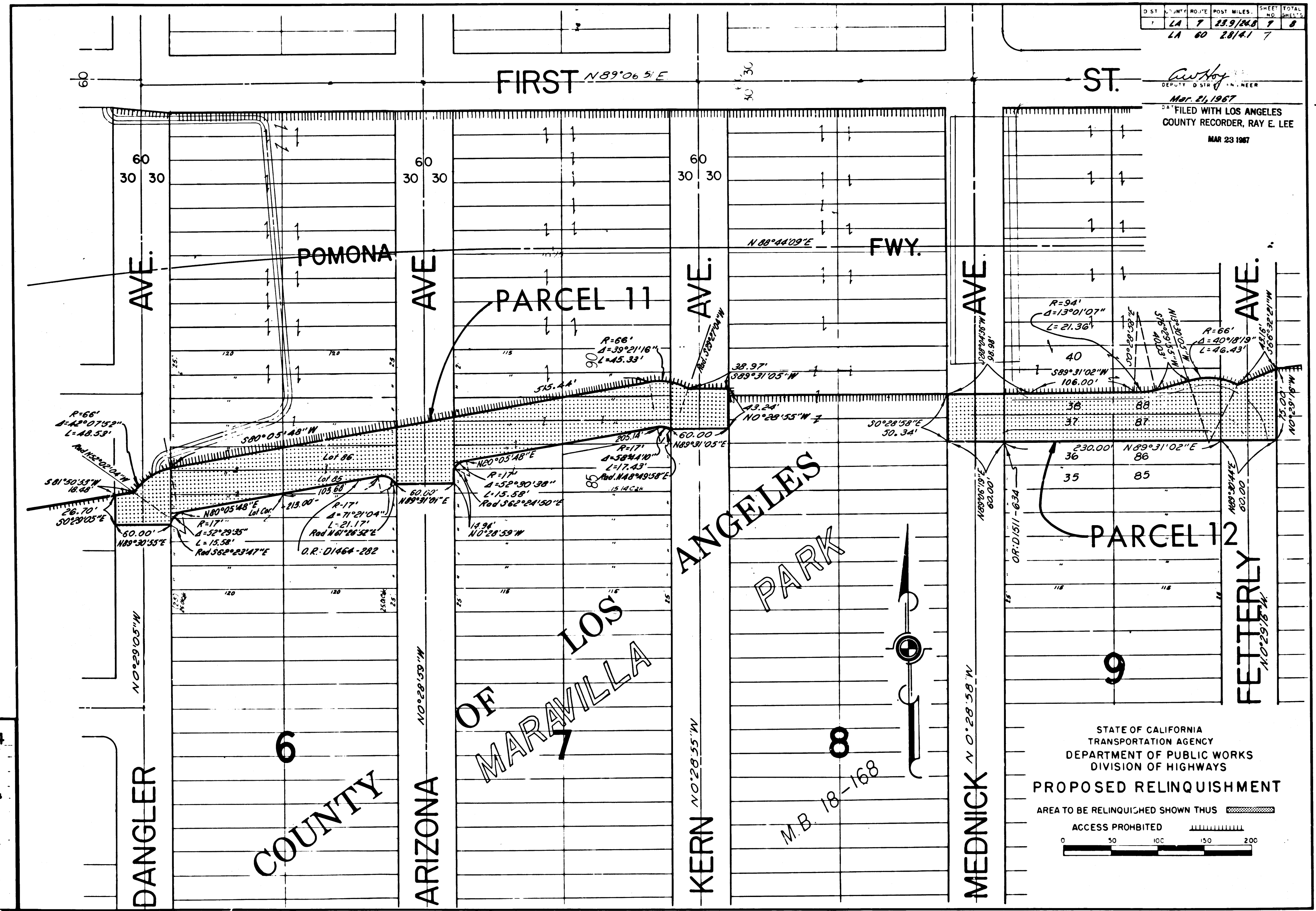
AREA TO BE RELINQUISHED SHOWN THUS

ACCESS PROHIBITED

0 50 100 150 200

DIST.	SECTION	ROUTE	POST MILES	SHEET NO.	TOTAL SHEETS
LA	7	23.9/24.8	7	8	
LA	60	28/4.1	7		

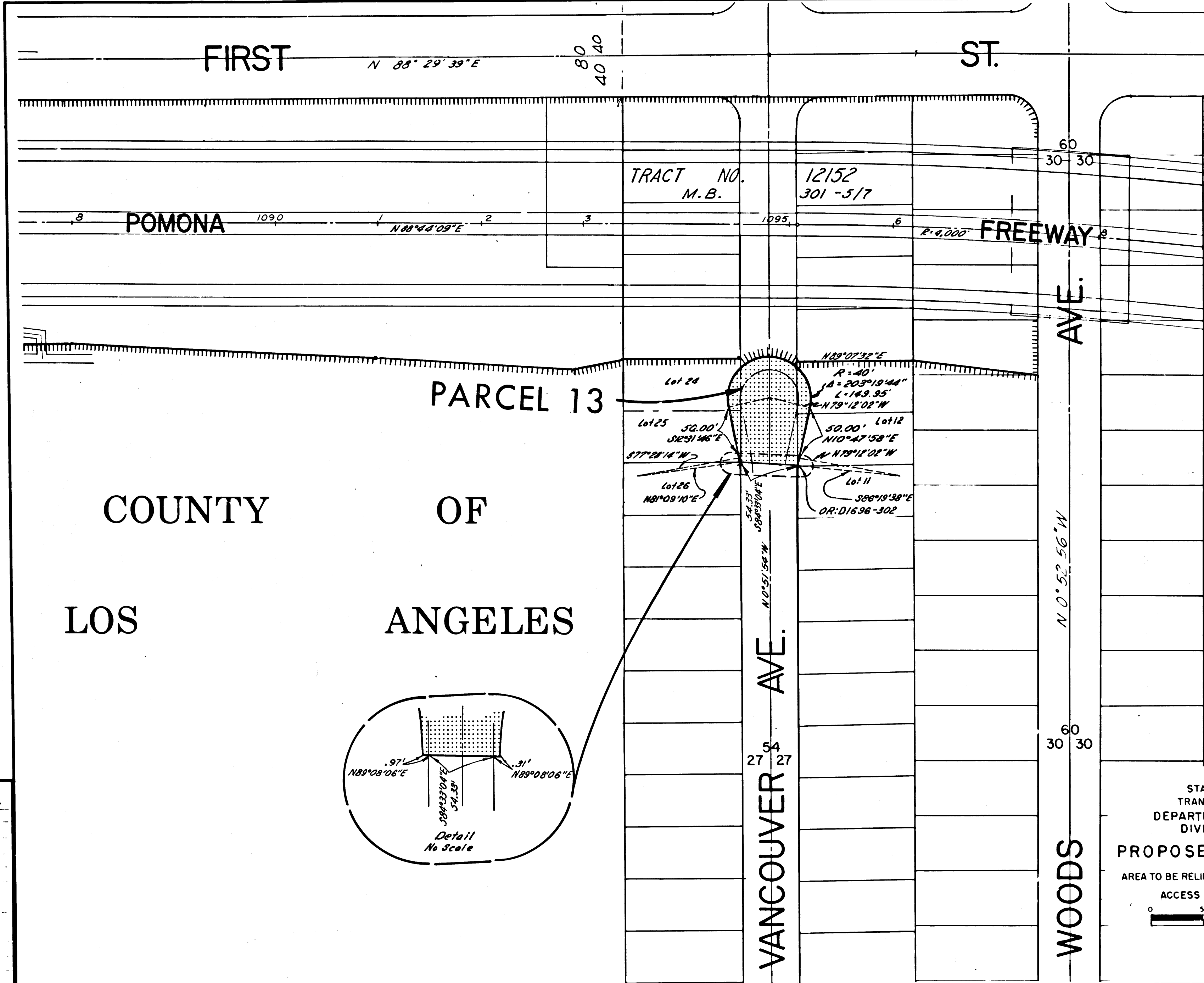
Ray E. Lee
 DEPUTY COUNTY RECORDER
 Mar. 21, 1967
 FILED WITH LOS ANGELES
 COUNTY RECORDER, RAY E. LEE
 MAR 23 1967



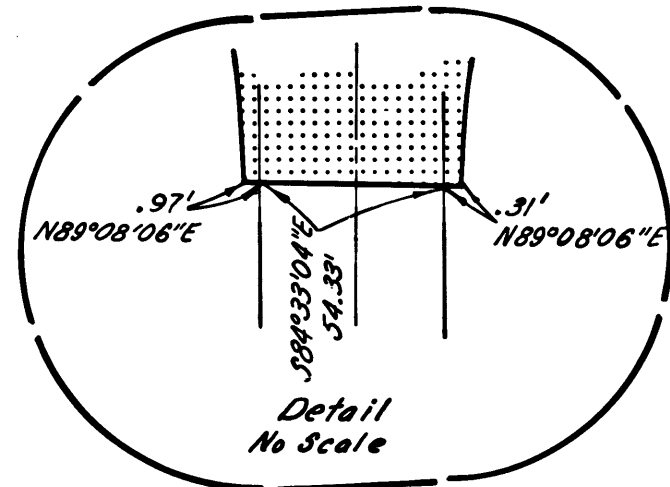
REL-564
 DRN BY EEN
 CLC BY JFF
 CK'D BY GDM
 BASE MAP NO'S
 F-1781
 REF MAP NO'S
 C.C.M. 215.7
 AS BUILT NO'S
 159-12

STATE OF CALIFORNIA
 TRANSPORTATION AGENCY
 DEPARTMENT OF PUBLIC WORKS
 DIVISION OF HIGHWAYS
PROPOSED RELINQUISHMENT
 AREA TO BE RELINQUISHED SHOWN THUS
 ACCESS PROHIBITED
 0 50 100 150 200

aw Hoy
 DEPUTY DISTRICT ENGINEER
 DATE: Mar. 21, 1967
 FILED WITH LOS ANGELES
 COUNTY RECORDER, RAY E. LEE
 MAR 23 1967



COUNTY OF LOS ANGELES



REL-564
 DRN BY ECH
 CLC BY JFF
 CK'D BY GDN
 BASE MAP NO'S
 F-1781

REF. MAP NO'S
 CCM 215.7

AS BUILT NO'S
 159-12

STATE OF CALIFORNIA
 TRANSPORTATION AGENCY
 DEPARTMENT OF PUBLIC WORKS
 DIVISION OF HIGHWAYS

PROPOSED RELINQUISHMENT

AREA TO BE RELINQUISHED SHOWN THUS

ACCESS PROHIBITED

0 50 100 150 200

