

2506

DIST	COUNTY	ROUTE	POST MILES	SHEET NO.	TOTAL SHEETS
7	LA	212	4.5/5.5	1	1

RECORDED  
AT REQUEST OF  
DEPT. OF PUBLIC WORKS  
APR. 26, 1967  
45 MIN. PAST 1 PM

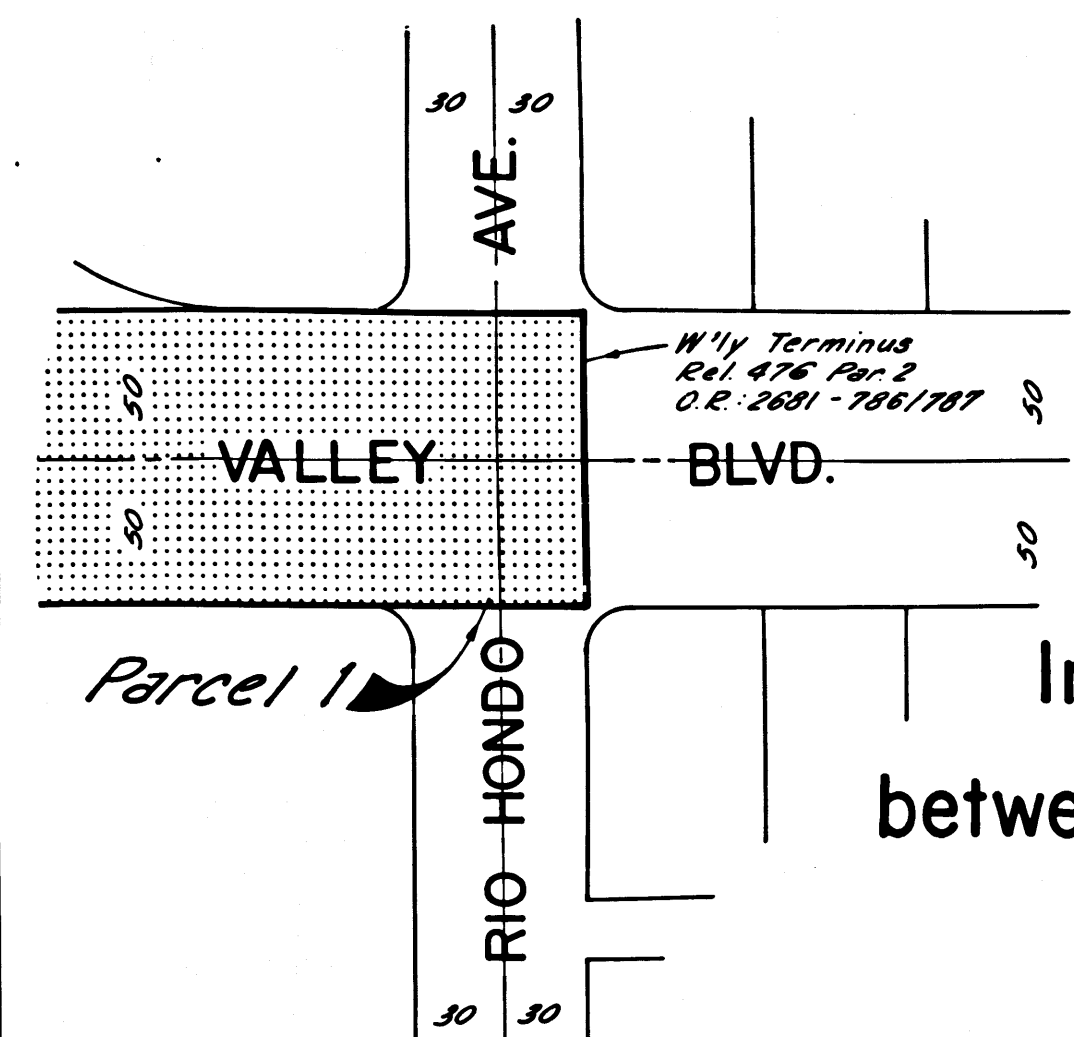
IN BOOK 5  
AT PAGE 61  
OF STATE HIGHWAY MAPS  
LOS ANGELES COUNTY, CALIF.  
RAY E. LEE  
COUNTY RECORDER  
BY *J. Lee* Deputy

*Awby*  
DEPUTY DISTRICT ENGINEER  
DATE 4-18-67

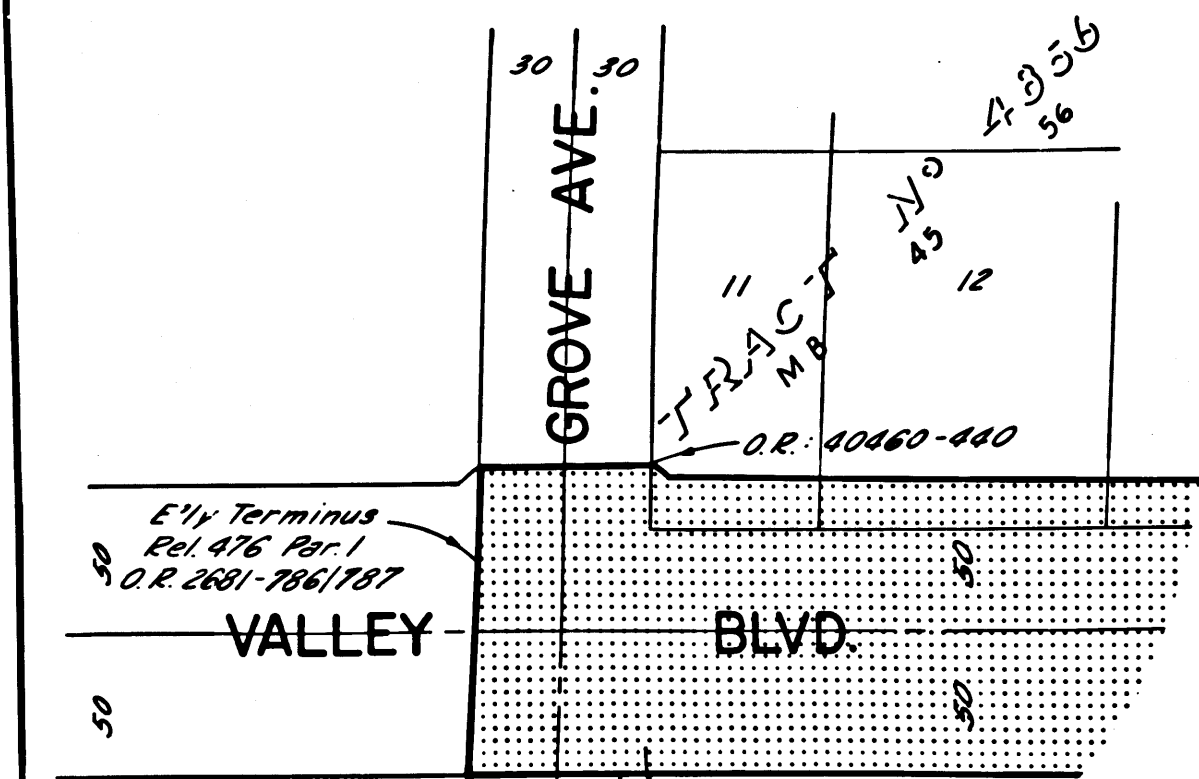
STATE OF CALIFORNIA  
TRANSPORTATION AGENCY  
DEPARTMENT OF PUBLIC WORKS  
DIVISION OF HIGHWAYS

RIGHT OF WAY MAPS OF  
STATE HIGHWAY

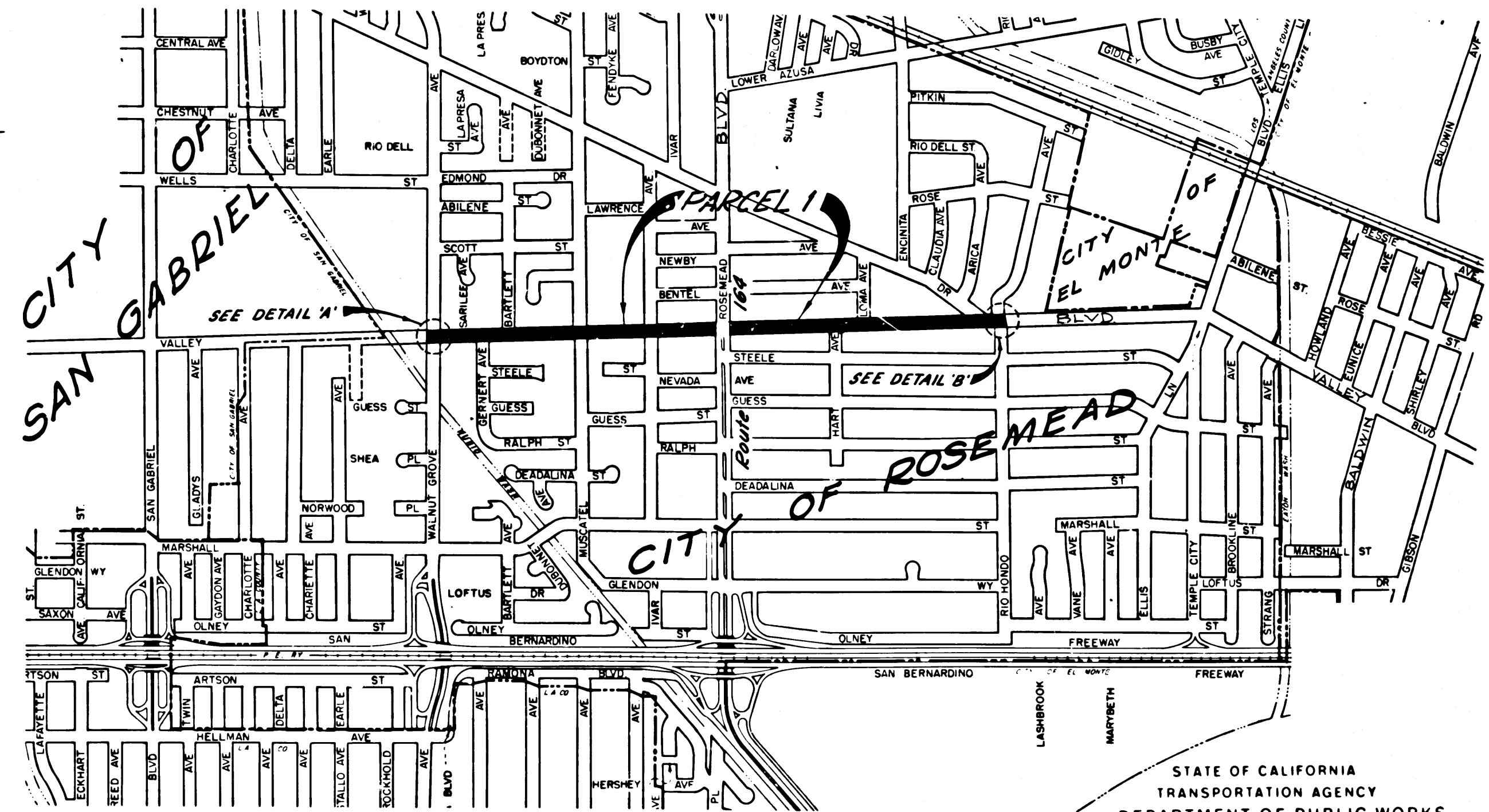
In the City of Rosemead on Valley Blvd.  
between Walnut Grove Ave. and Rio Hondo Ave.



Detail 'B'  
NO SCALE



Detail 'A'  
NO SCALE



STATE OF CALIFORNIA  
TRANSPORTATION AGENCY  
DEPARTMENT OF PUBLIC WORKS  
DIVISION OF HIGHWAYS  
PROPOSED RELINQUISHMENT  
AREA TO BE RELINQUISHED SHOWN THUS



Rev. 4-17-67  
REL-571  
DRN BY ECH  
C'LC BY  
C'D BY SLT  
BASE MAP NO'S  
541 & P-3780  
REF. MAP NO'S  
AS BUILT NO'S