

DIST	COUNTY	ROUTE	POST MILES	SHEET NO	TOTAL SHEETS
7	CA	42	19.7	1	2

STATE OF CALIFORNIA
 TRANSPORTATION AGENCY
 DEPARTMENT OF PUBLIC WORKS
 DIVISION OF HIGHWAYS

W. J. ...
 DEPUTY DISTRICT ENGINEER
 DATE May 9, 1967

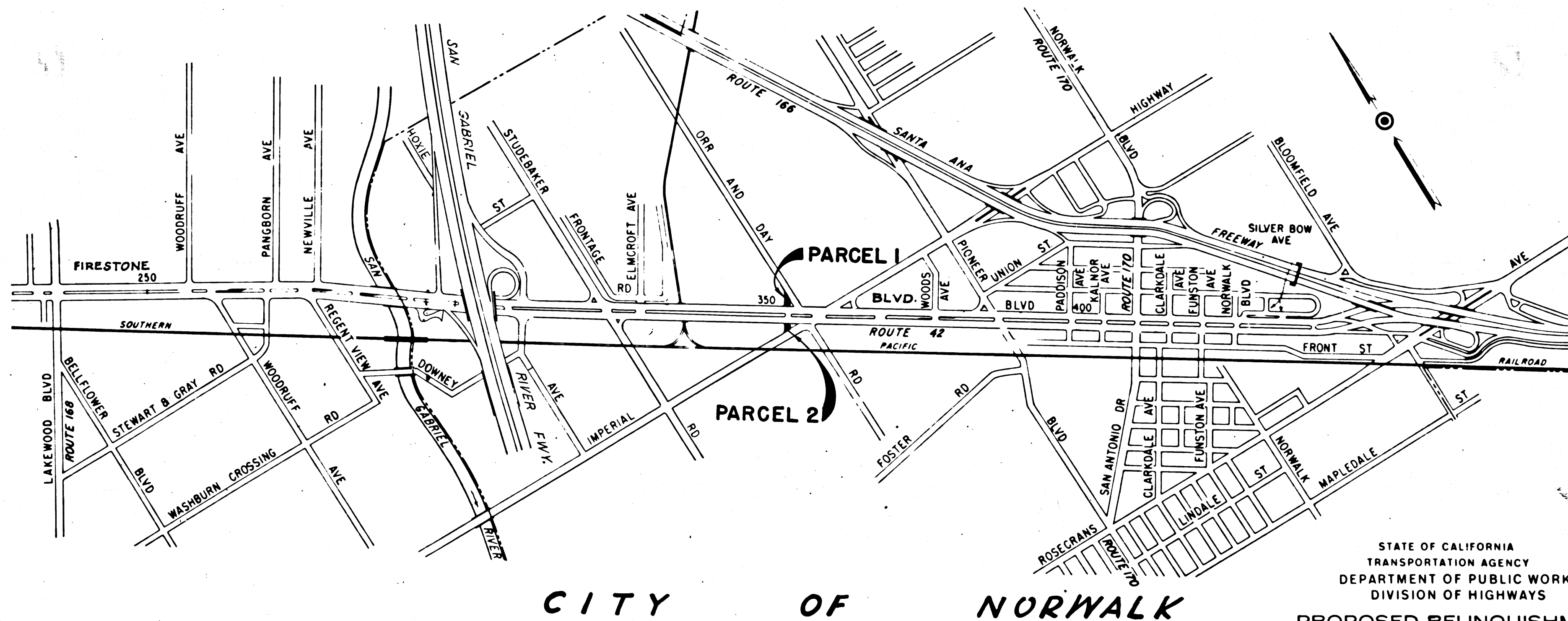
2645

RECORDED
 AT REQUEST OF
 DEPT. OF PUBLIC WORKS
 MAY 11, 1967
 21 MIN. PAST 1 P.M.

BOOK 5
 PAGE 66
 OF STATE HIGHWAY MAPS
 LOS ANGELES COUNTY, CALIF.
 RAY E. LEE
 COUNTY REGISTER
 BY *W. J. ...*
 Deputy

Free

RIGHT OF WAY MAPS OF
STATE HIGHWAY
 In Los Angeles County between Orr & Day Road
 and Imperial Highway



CITY OF NORWALK

STATE OF CALIFORNIA
 TRANSPORTATION AGENCY
 DEPARTMENT OF PUBLIC WORKS
 DIVISION OF HIGHWAYS
 PROPOSED RELINQUISHMENT



REL-607

DRAWN BY *EEH*
 C.L.C. BY *EEH*
 CHECKED BY *SLT*
 BASE MAP NO'S
Pr 5335
 REF. MAP NOS.
 AS BUILT NO'S

5	7	LA	42	19.7	2	2
---	---	----	----	------	---	---

CITY OF NORWALK

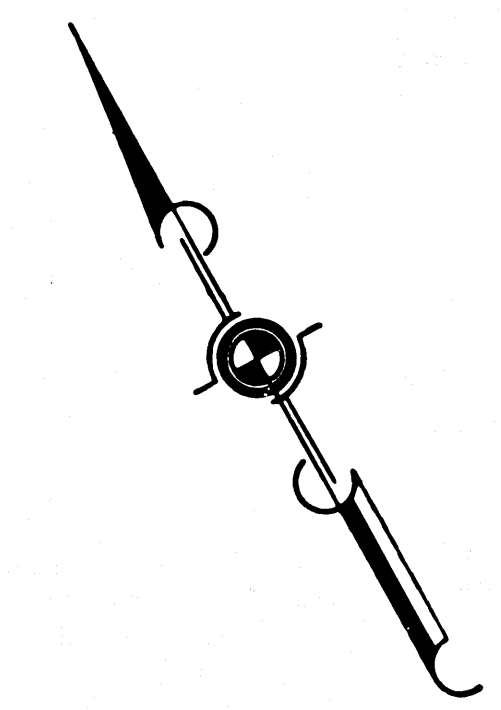
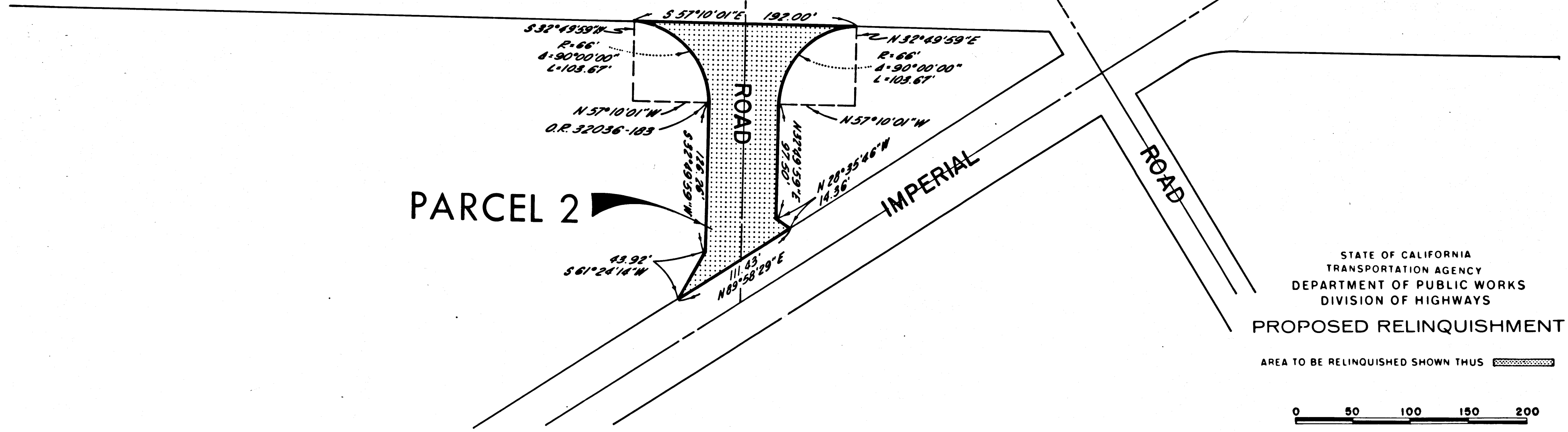
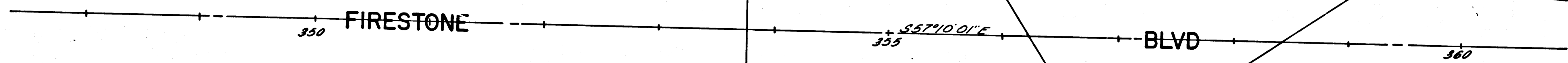
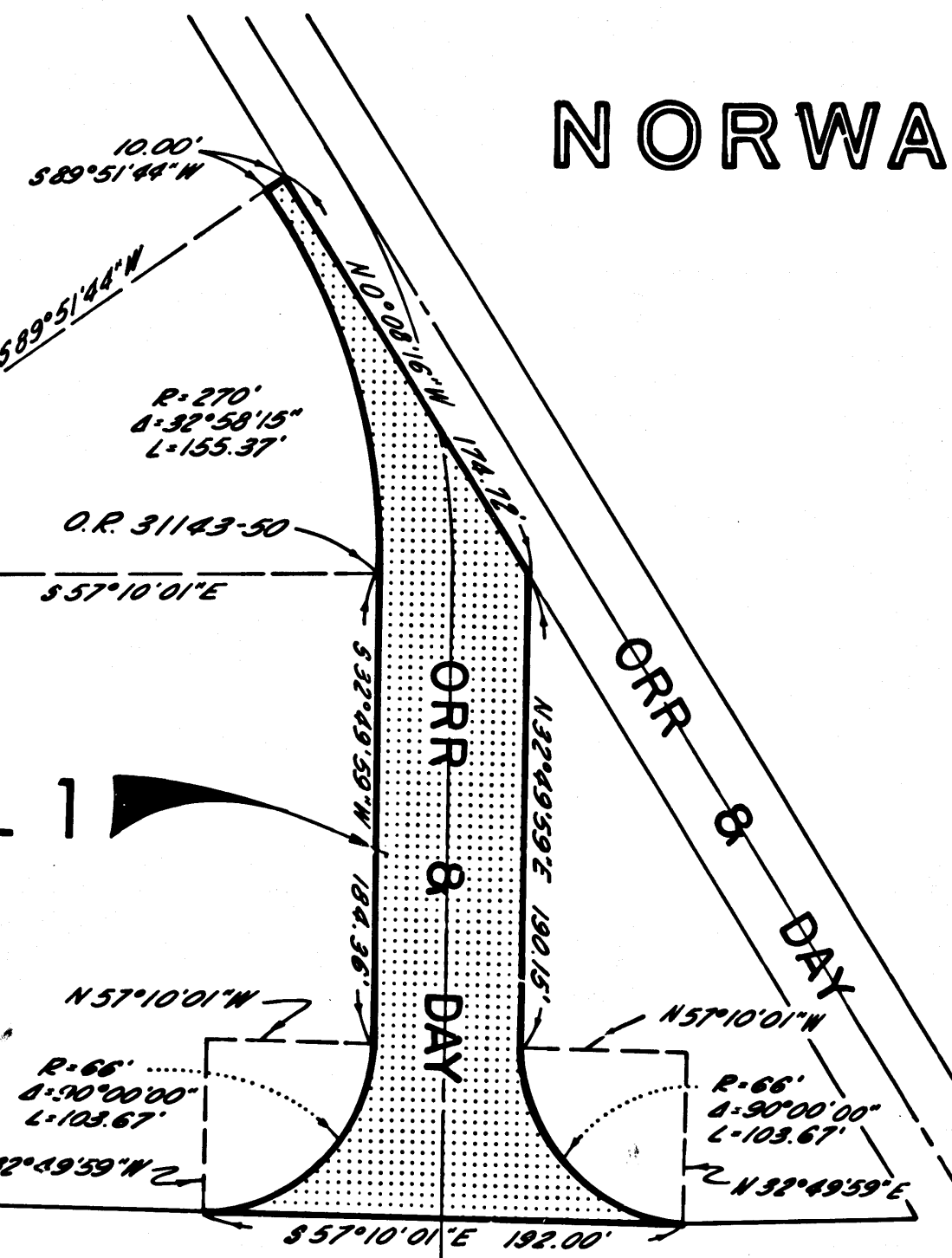
FILED WITH LOS ANGELES COUNTY RECORDER, RAY ELEE
MAY 11 1967

Ray Elee
DEPUTY DISTRICT ENGINEER
DATE May 9, 1967

SE 1/4 of SW 1/4
Sec. 12 T35 R12W
Rancho Santa Gertrudes
M. R. 1-502

PARCEL 1

PARCEL 2



HIGHWAY

FIRESTONE

BLVD

ROAD

IMPERIAL

ROAD

STATE OF CALIFORNIA
TRANSPORTATION AGENCY
DEPARTMENT OF PUBLIC WORKS
DIVISION OF HIGHWAYS

PROPOSED RELINQUISHMENT

AREA TO BE RELINQUISHED SHOWN THUS



REL-607
DRW BY EEH
C/LC BY EEH
CKD BY SLT
BASE MAP NO'S
P 5335
REF. MAP NO'S
AS BUILT NO'S

KS
1/8/67