

| DIST | COUNTY | ROUTE | POST MILES | SHEET NO. | TOTAL SHEETS |
|------|--------|-------|------------|-----------|--------------|
| 7 | LA | 10 | 31.2/33.6 | 1 | 13 |

STATE OF CALIFORNIA
 TRANSPORTATION AGENCY
 DEPARTMENT OF PUBLIC WORKS
 DIVISION OF HIGHWAYS

RIGHT OF WAY MAPS OF
STATE HIGHWAY
 In Los Angeles County on Route 10 between the West City Limit
 and East City Limit of Baldwin Park

C. W. Hoy
 DEPUTY DISTRICT ENGINEER

DATE *May 11, 1967*

3326

RECORDED
 AT REQUEST OF
 DEPT. OF PUBLIC WORKS
 MAY 15, 1967
 15 MIN. PAST 3 P.M.

IN BOOK 5

AT PAGE 68

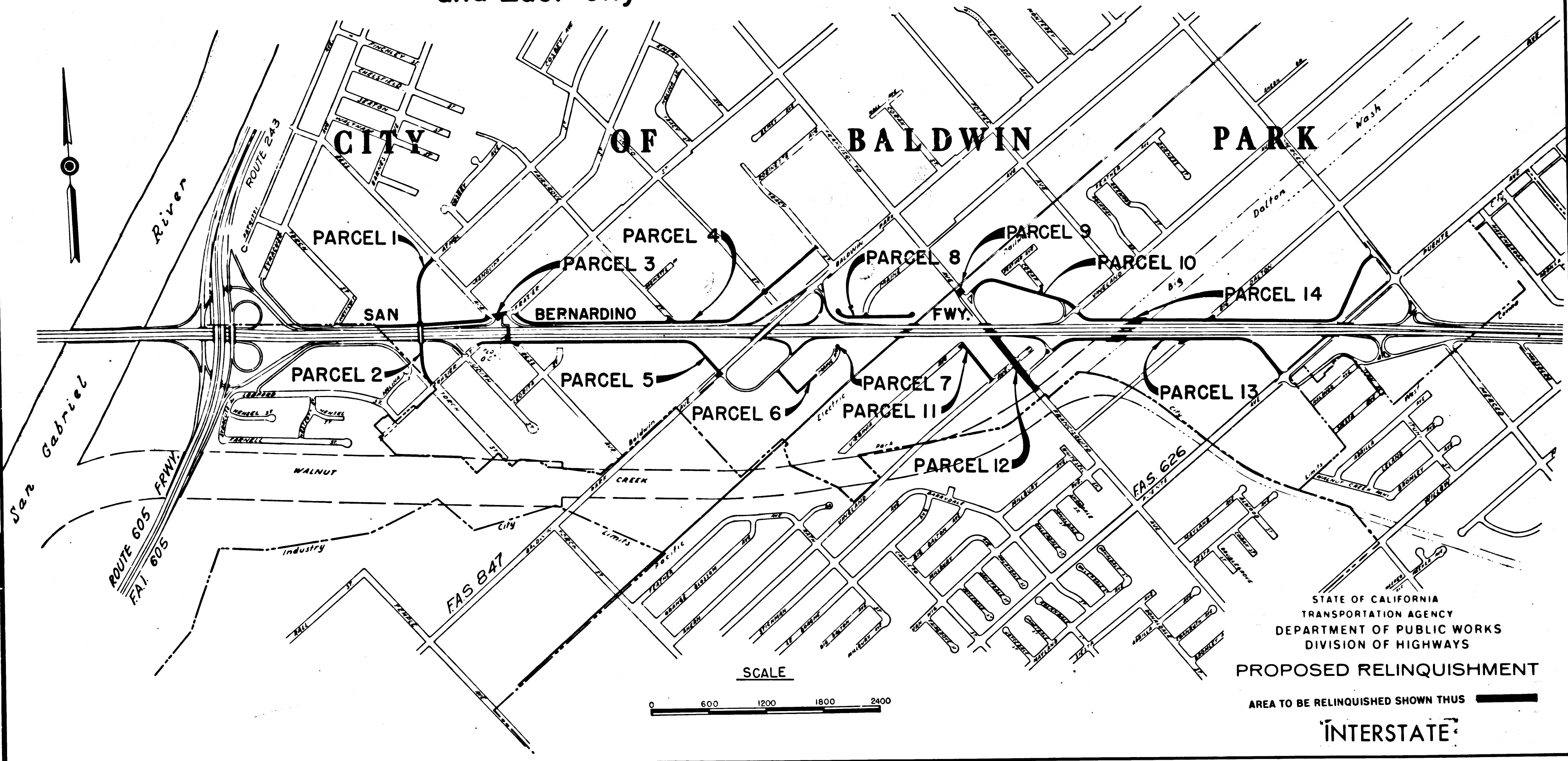
OF STATE HIGHWAY MAPS
 LOS ANGELES COUNTY, CALIF.
 RAY E. LEE
 COUNTY RECORDER

BY *[Signature]*
 Deputy

Free

*OK 5
 1/3/67*

Free



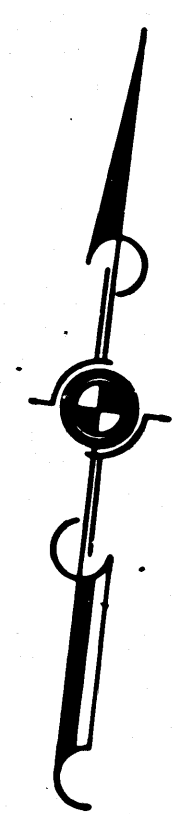
REL-575
 DRN BY EEN
 C/LC BY MN
 CK'D BY S.L.T
 BASE MAP NO'S
 F-1060 &
 F-1061
 REF. MAP NO'S
 AS BUILT NO'S

STATE OF CALIFORNIA
 TRANSPORTATION AGENCY
 DEPARTMENT OF PUBLIC WORKS
 DIVISION OF HIGHWAYS
 PROPOSED RELINQUISHMENT
 AREA TO BE RELINQUISHED SHOWN THUS **INTERSTATE**

| ST. | COUNTY | ROUTE | POST M. I. S. | SHEET NO. | TOTAL SHEETS |
|-----|--------|-------|---------------|-----------|--------------|
| 7 | LA | 10 | 31.2/33.6 | 2 | 19 |

Ray E. Lee
 DEPUTY DISTRICT ENGINEER
 DATE May 11, 1967

FILED WITH LOS ANGELES
 COUNTY RECORDER, RAY E. LEE
 MAY 15 1967



CITY
 BALDWIN

CITY
 OF
 PARK

BESS

MANGUM ST.
 AVE.

TRACT NO. 10953
 M.B. 193-44/45
 Lot A

PARCEL 1

FRONTAGE

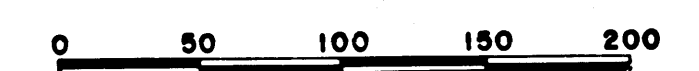
ROAD

INTERSTATE

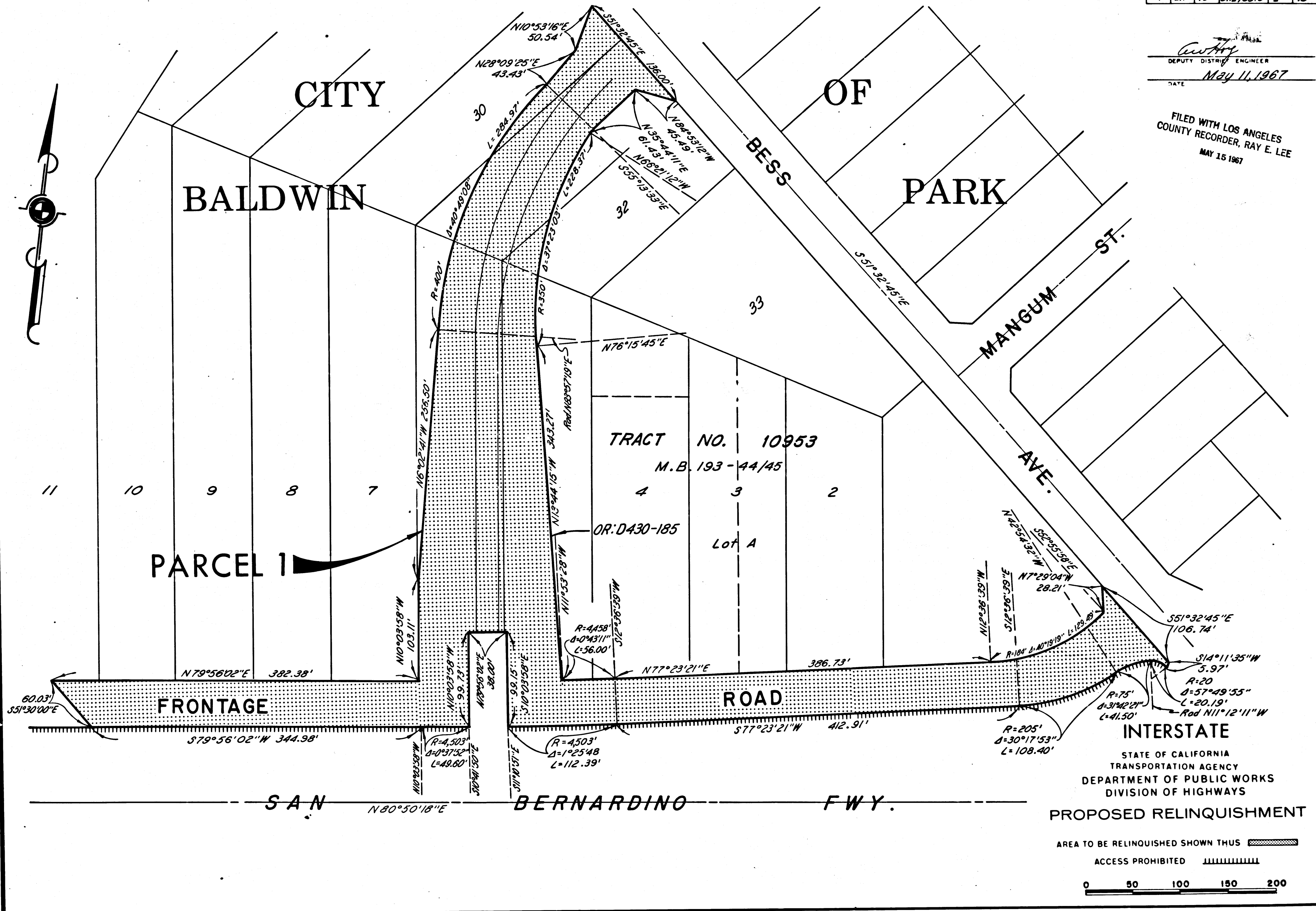
STATE OF CALIFORNIA
 TRANSPORTATION AGENCY
 DEPARTMENT OF PUBLIC WORKS
 DIVISION OF HIGHWAYS

PROPOSED RELINQUISHMENT

AREA TO BE RELINQUISHED SHOWN THUS 
 ACCESS PROHIBITED 



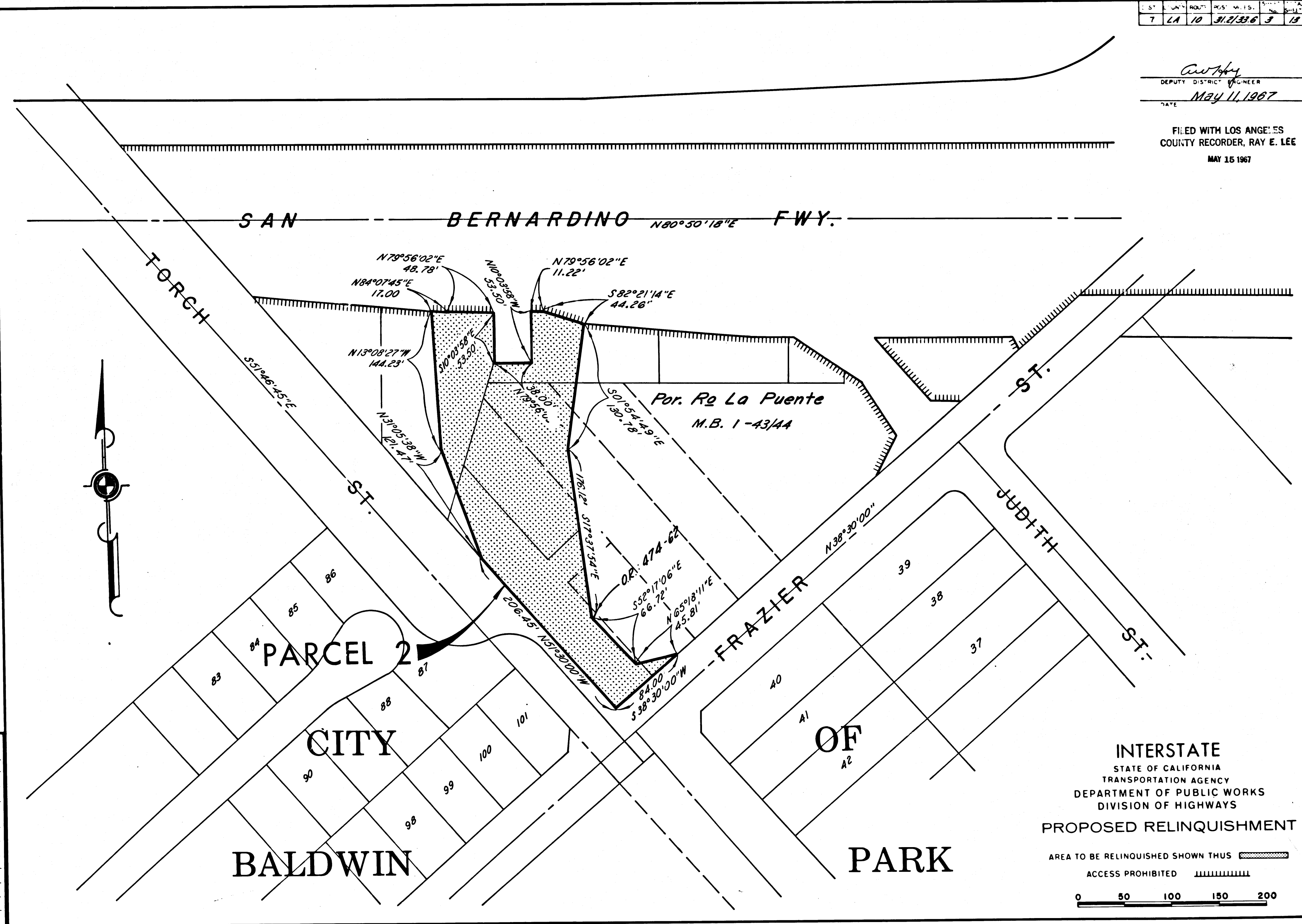
REL-575
 DRN BY MC
 CLC BY S.L.T.
 CK'D BY S.L.T.
 BASE MAP NO'S
 F-1860
 REF. MAP NO'S
 AS BUILT NO'S



| S. | UNIT | ROUTE | POS. M. I. S. | DATE | BY |
|----|------|-------|---------------|------|----|
| 7 | LA | 10 | 31.2/39.6 | 3 | 15 |

Anthony
 DEPUTY DISTRICT ENGINEER
 DATE May 11, 1967

FILED WITH LOS ANGELES
 COUNTY RECORDER, RAY E. LEE
 MAY 15 1967



REL-575
 DRTN BY M.C.
 C'L.C BY M.M.
 CK'D BY SLT
 BASE MAP NO'S
F-1060
 REF. MAP NO'S
 AS BUILT NO'S

INTERSTATE
 STATE OF CALIFORNIA
 TRANSPORTATION AGENCY
 DEPARTMENT OF PUBLIC WORKS
 DIVISION OF HIGHWAYS
 PROPOSED RELINQUISHMENT
 AREA TO BE RELINQUISHED SHOWN THUS
 ACCESS PROHIBITED
 0 50 100 150 200

| S | J | R | M | S | A |
|---|----|----|------|------|------|
| 7 | LA | 10 | 31.2 | 33.6 | 4 13 |

C. W. Hoyle
 DEPUTY DISTRICT ENGINEER
 DATE May 11, 1967

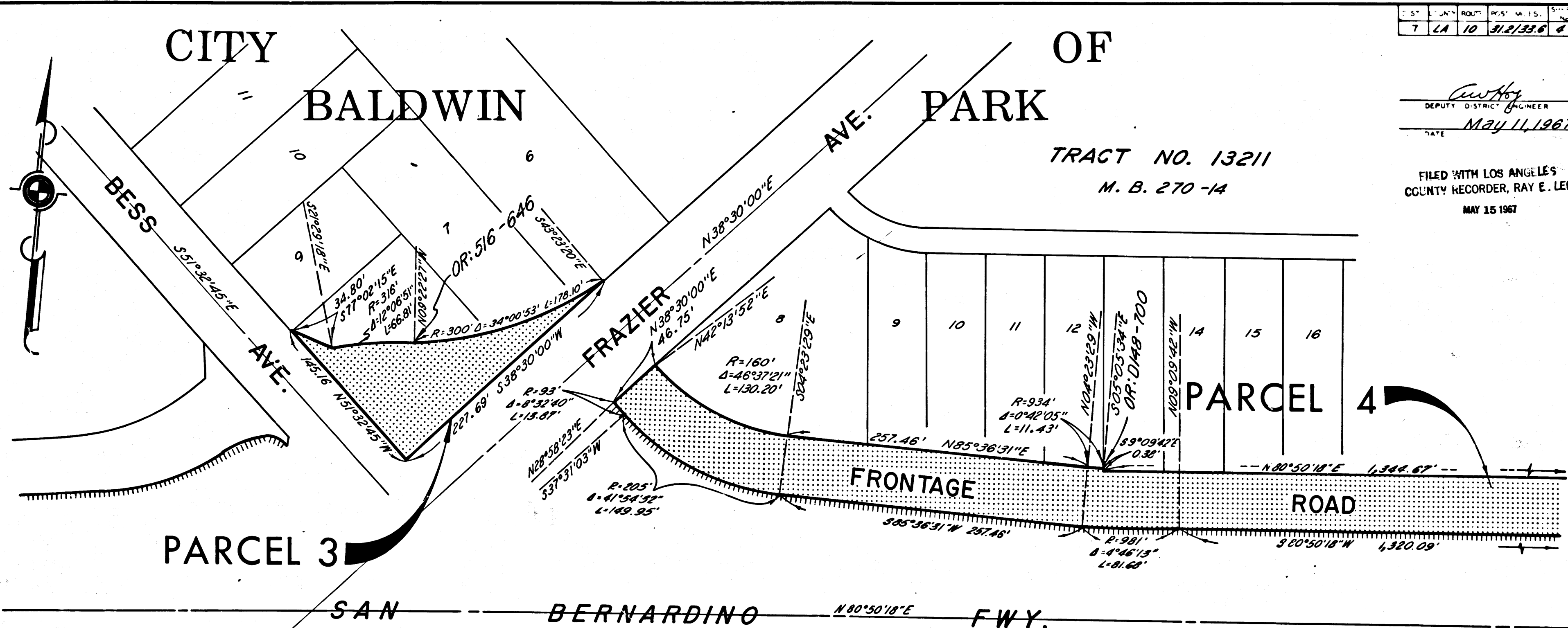
FILED WITH LOS ANGELES
 COUNTY RECORDER, RAY E. LEE
 MAY 15 1967

BK 5
 P 371

CITY OF BALDWIN

OF PARK

TRACT NO. 13211
 M. B. 270-14



PARCEL 3

PARCEL 4

PARCEL 5

TRACT NO. 13211
 M. B. 270-14

REL-575

DRAWN BY M.C.
 CALC BY M.M.
 CK'D BY S.L.T.
 BASE MAP NO'S F-1060
 REF. MAP NO'S _____
 AS BUILT NO'S _____

INTERSTATE
 STATE OF CALIFORNIA
 TRANSPORTATION AGENCY
 DEPARTMENT OF PUBLIC WORKS
 DIVISION OF HIGHWAYS
 PROPOSED RELINQUISHMENT

AREA TO BE RELINQUISHED SHOWN THUS 
 ACCESS PROHIBITED 

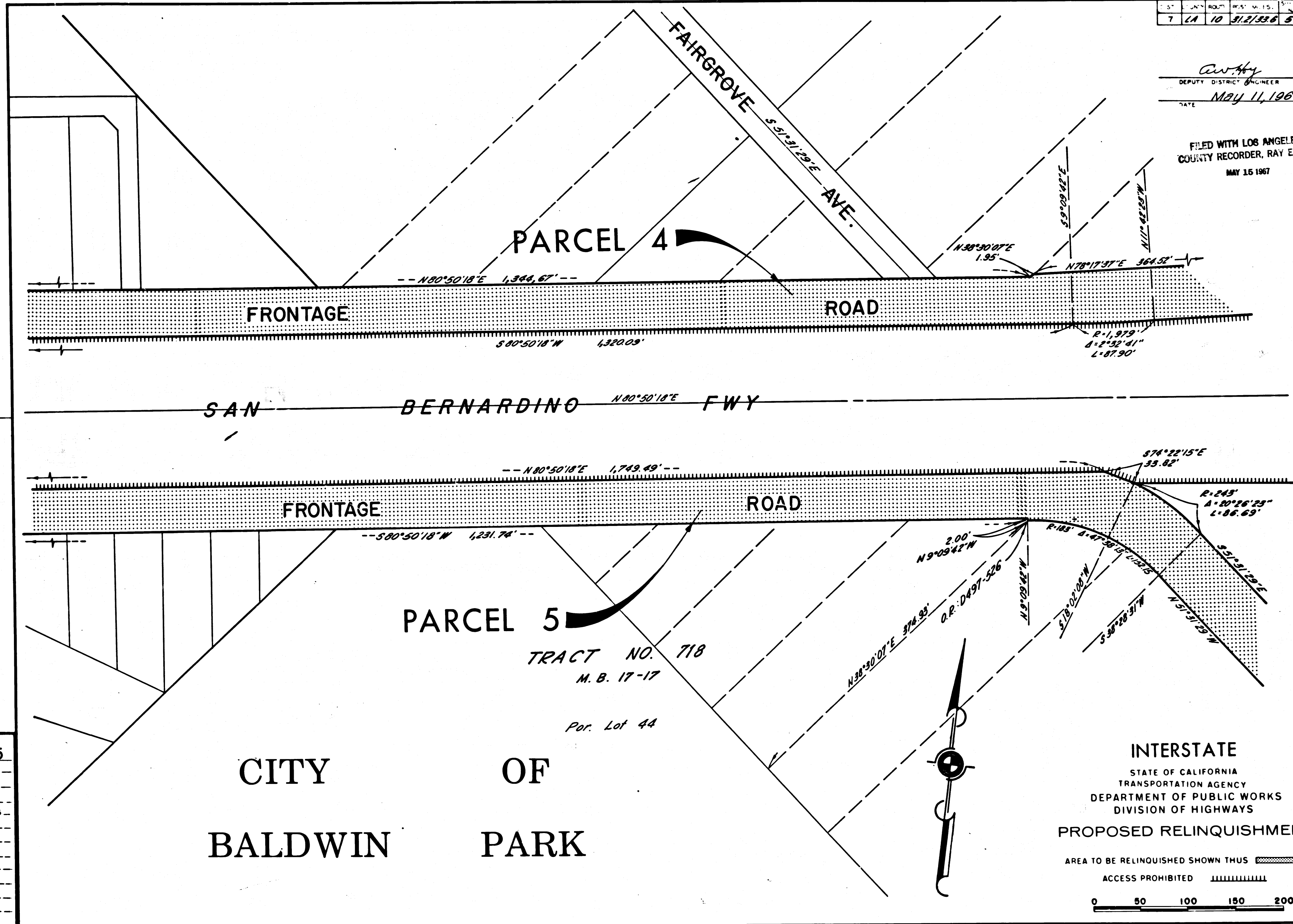
0 50 100 150 200

| ST | UNIT | ADJUT | PT'S | W. L.S. | DATE | SHEET |
|----|------|-------|------|---------|------|-------|
| 7 | LA | 10 | 31.2 | 53.6 | 5 | 18 |

C.W. Hy
 DEPUTY DISTRICT ENGINEER
 DATE *MAY 11, 1967*

FILED WITH LOS ANGELES
 COUNTY RECORDER, RAY E. LEE
 MAY 15 1967

BK 5
 P 372



REL-575
 DRN BY *EEH*
 C'LC BY *MM*
 C'RD BY *S.L.T.*
 BASE MAP NO'S
F-1060
 REF. MAP NO'S
 AS BUILT NO'S

CITY OF
 BALDWIN PARK

INTERSTATE
 STATE OF CALIFORNIA
 TRANSPORTATION AGENCY
 DEPARTMENT OF PUBLIC WORKS
 DIVISION OF HIGHWAYS
 PROPOSED RELINQUISHMENT
 AREA TO BE RELINQUISHED SHOWN THUS [Hatched Pattern]
 ACCESS PROHIBITED [Hatched Pattern]
 0 50 100 150 200

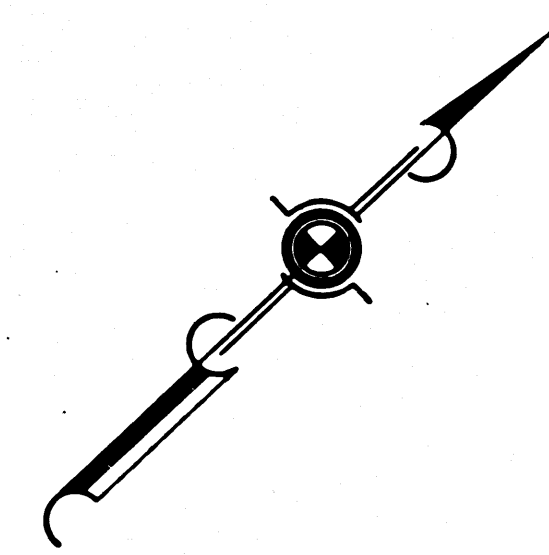
| | | | | | |
|-----|------|-------|------------|---------|-------|
| ST. | CITY | ROUTE | POST MILES | SECTION | RANGE |
| 7 | LA | 10 | 31.25386 | 6 | 19 |

Anthony
 DEPUTY DISTRICT ENGINEER
 DATE May 11, 1967

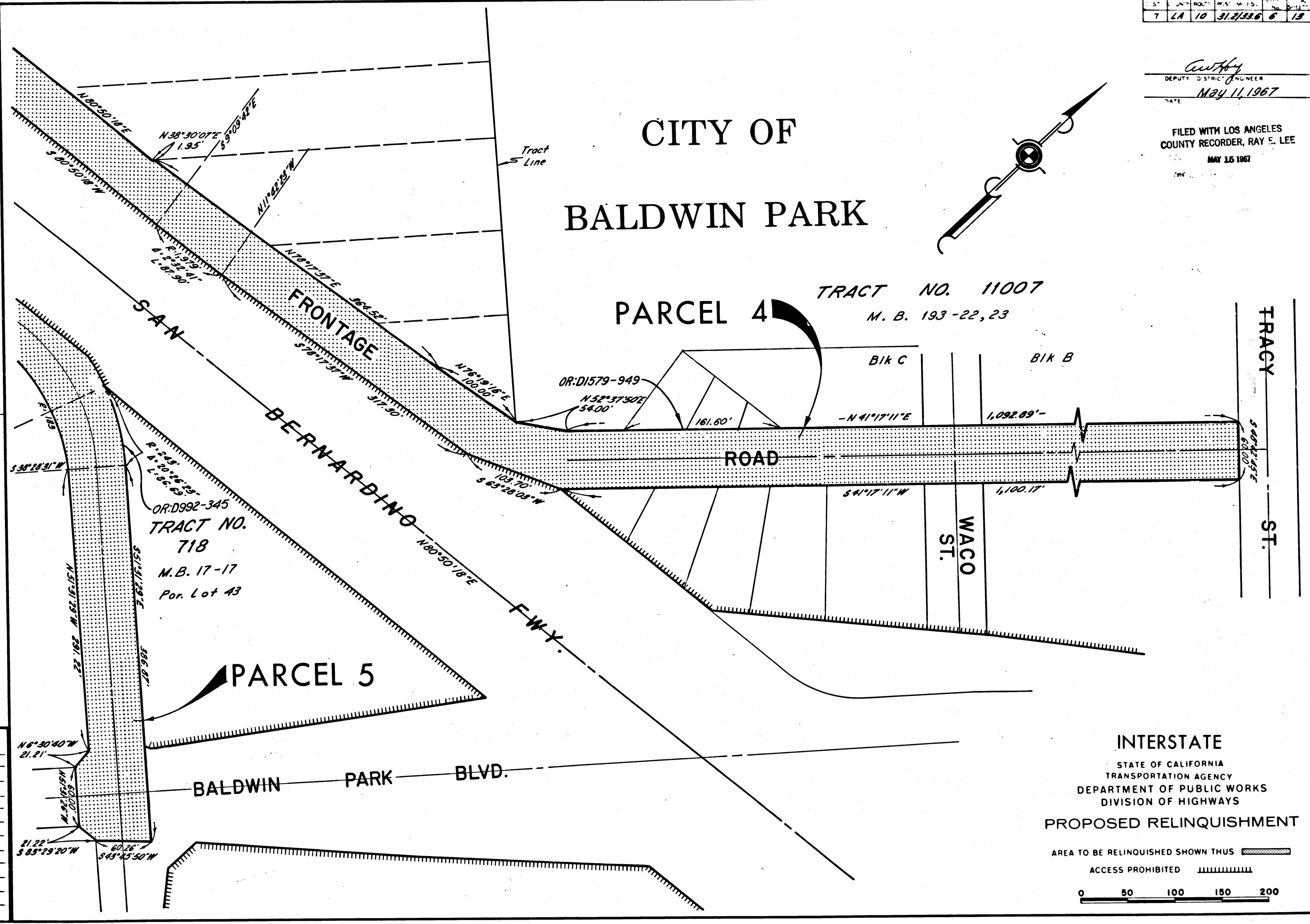
FILED WITH LOS ANGELES
 COUNTY RECORDER, RAY E. LEE
 MAY 15 1967

1965
 1973

CITY OF BALDWIN PARK



PARCEL 4
 TRACT NO. 11007
 M. B. 193-22, 23



Rev. 3-20-67
REL-575
 DRN BY EEH
 C'LC BY MM
 CK'D BY SLT
 BASE MAP NO'S
F-1860
 REF. MAP NO'S
 AS BUILT NO'S

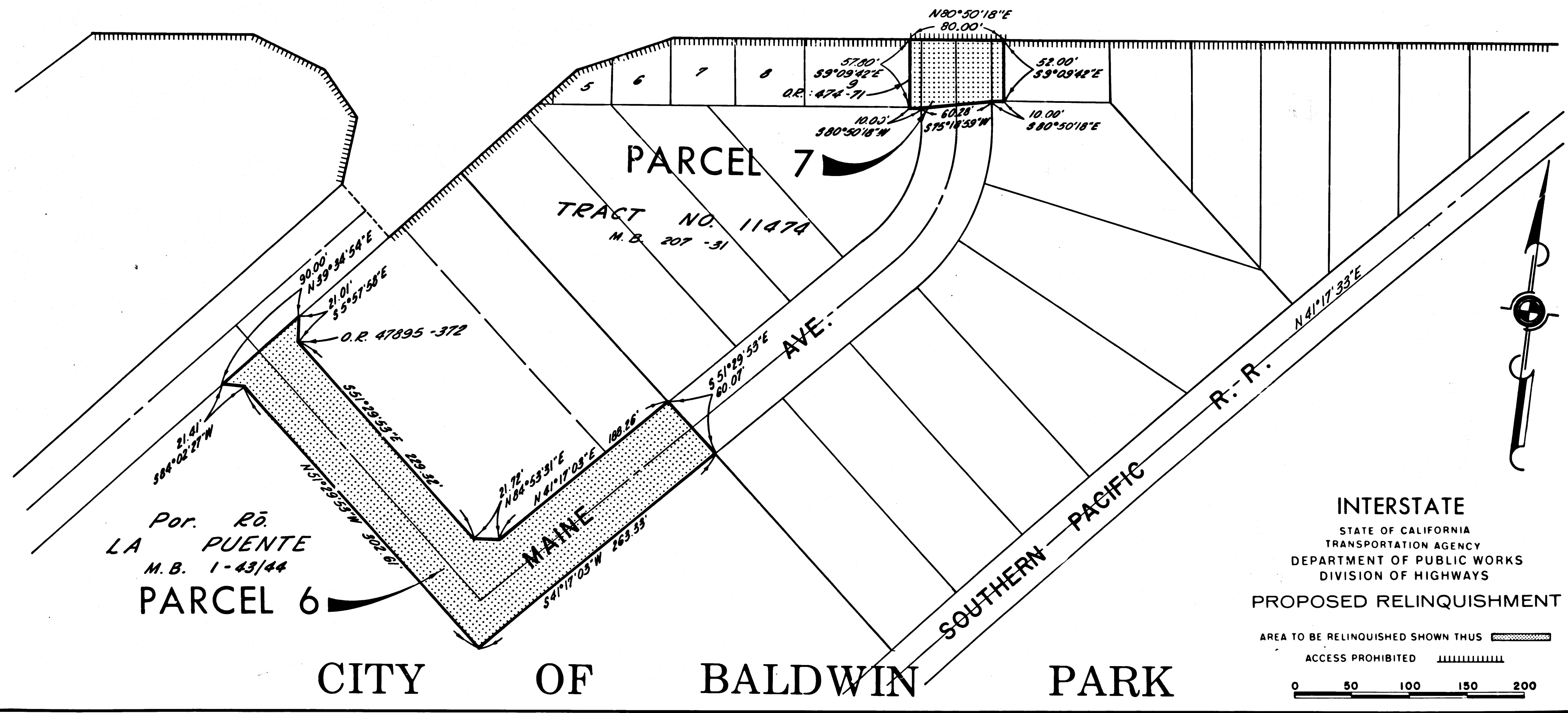
INTERSTATE
 STATE OF CALIFORNIA
 TRANSPORTATION AGENCY
 DEPARTMENT OF PUBLIC WORKS
 DIVISION OF HIGHWAYS
PROPOSED RELINQUISHMENT
 AREA TO BE RELINQUISHED SHOWN THUS
 ACCESS PROHIBITED
 0 50 100 150 200

| | | | | | | | | | | |
|----|-----|-----|----------|-----|-----|-----|-----|-----|-----|------|
| 5' | 10' | 20' | 30' | 40' | 50' | 60' | 70' | 80' | 90' | 100' |
| 7 | EA | 10 | 31,233.6 | 7 | 13 | | | | | |

C. W. Hoy
 DEPUTY DISTRICT ENGINEER
 DATE *May 11, 1967*

FILED WITH LOS ANGELES
 COUNTY RECORDER, RAY E. LEE
 MAY 15 1967

*365
 pg 74*



REL- 575
 DRN BY *EEH*
 C'LC BY *MM*
 CK'D BY *SLT*
 BASE MAP NO'S
F-1860
 REF. MAP NOS
 AS BUILT NO'S

Por. Rõ
 LA PUENTE
 M. B. 1-43/44
PARCEL 6

PARCEL 7
 TRACT NO. 11474
 M. B. 207-31

CITY OF BALDWIN PARK

INTERSTATE
 STATE OF CALIFORNIA
 TRANSPORTATION AGENCY
 DEPARTMENT OF PUBLIC WORKS
 DIVISION OF HIGHWAYS
PROPOSED RELINQUISHMENT
 AREA TO BE RELINQUISHED SHOWN THUS
 ACCESS PROHIBITED
 0 50 100 150 200

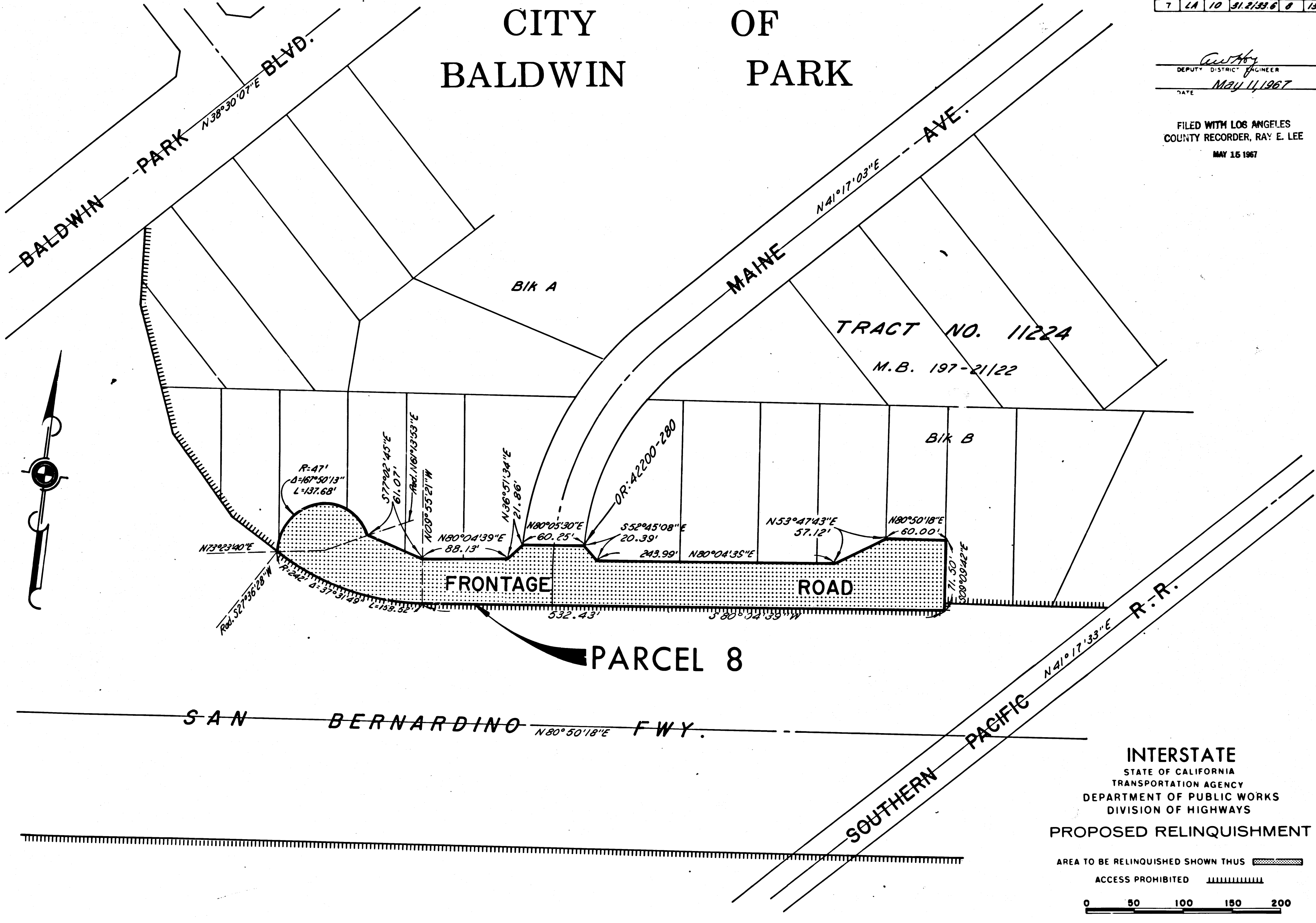
| DIST. | COUNTY | ROUTE | POST MILES | SHEET NO. | TOTAL SHEETS |
|-------|--------|-------|------------|-----------|--------------|
| 7 | LA | 10 | 31.2/33.6 | 8 | 13 |

CITY OF BALDWIN PARK

Anthony
 DEPUTY DISTRICT ENGINEER
 DATE MAY 11, 1967

FILED WITH LOS ANGELES
 COUNTY RECORDER, RAY E. LEE
 MAY 15 1967

BK 5
 PG 75



REL-575
 DWN BY *MC*
 C'LC BY *MM*
 CKD BY *S.L.T.*
 BASE MAP NO'S
F-1660
 REF. MAP NO'S
 AS BUILT NO'S

INTERSTATE
 STATE OF CALIFORNIA
 TRANSPORTATION AGENCY
 DEPARTMENT OF PUBLIC WORKS
 DIVISION OF HIGHWAYS
 PROPOSED RELINQUISHMENT

AREA TO BE RELINQUISHED SHOWN THUS

ACCESS PROHIBITED

0 50 100 150 200

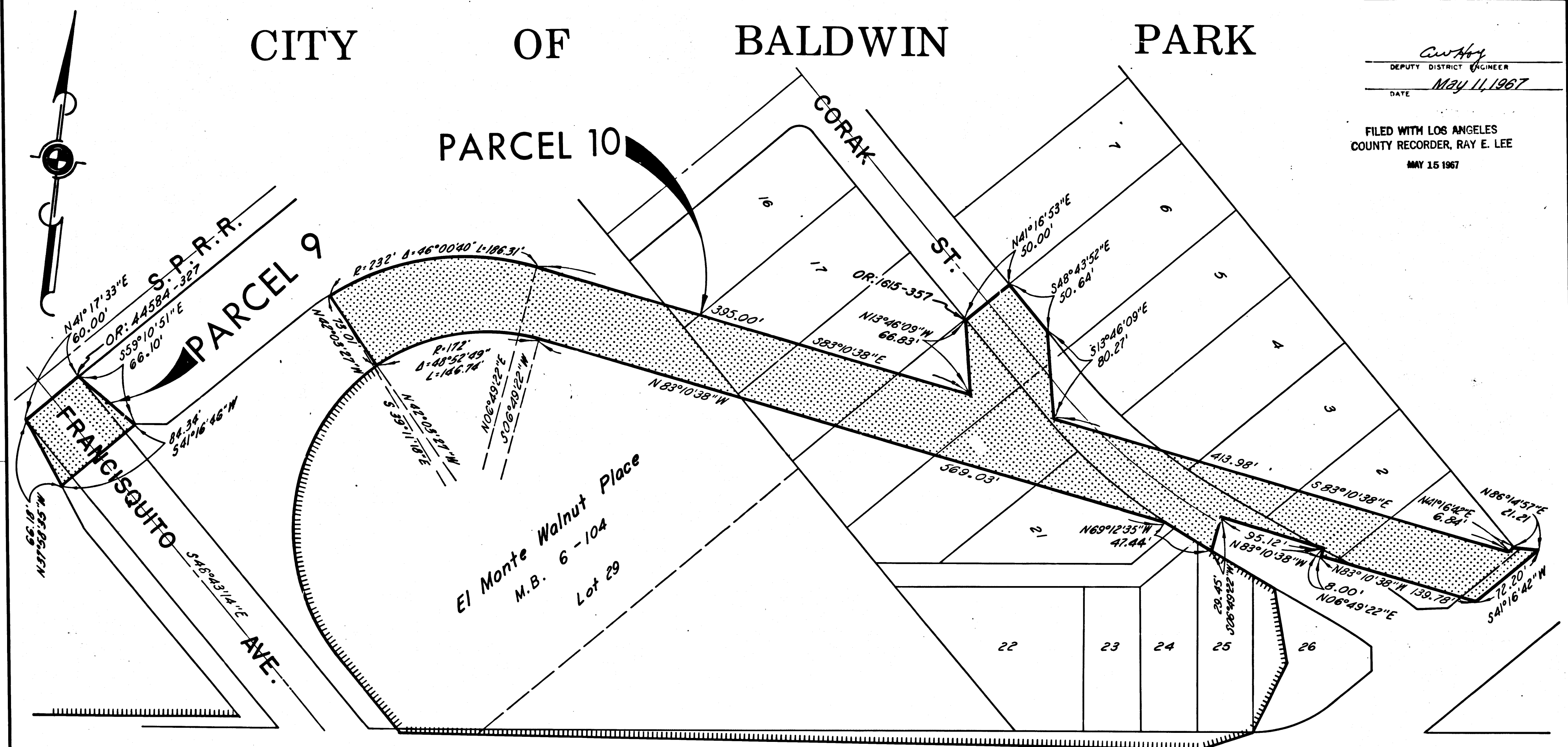
| DIST. | COUNTY | ROUTE | POST MILES | SHEET No. | TOTAL SHEETS |
|-------|--------|-------|------------|-----------|--------------|
| 7 | LA | 10 | 31.2/33.6 | 9 | 13 |

CITY OF BALDWIN PARK

C. W. HAY
 DEPUTY DISTRICT ENGINEER
 DATE May 11, 1967

FILED WITH LOS ANGELES COUNTY RECORDER, RAY E. LEE
 MAY 15 1967

BK 5-1876



Rev. 3-20-67

REL-575
 DRN BY MC
 CLC BY MM
 CK'D BY S.L.T.
 BASE MAP NO'S
 F-1861
 REF. MAP NO'S
 AS BUILT NO'S

SAN BERNARDINO N80°50'18"E FWY

INTERSTATE
 STATE OF CALIFORNIA
 TRANSPORTATION AGENCY
 DEPARTMENT OF PUBLIC WORKS
 DIVISION OF HIGHWAYS
 PROPOSED RELINQUISHMENT

AREA TO BE RELINQUISHED SHOWN THUS
 ACCESS PROHIBITED
 0 50 100 150 200

CITY OF BALDWIN PARK

BOOK 5 PAGE 77

| DIST. | ROUTE | POST M. I.S. | DATE |
|-------|-------|--------------|-------|
| 7 | LA 10 | 31.2/33.8 | 10 13 |

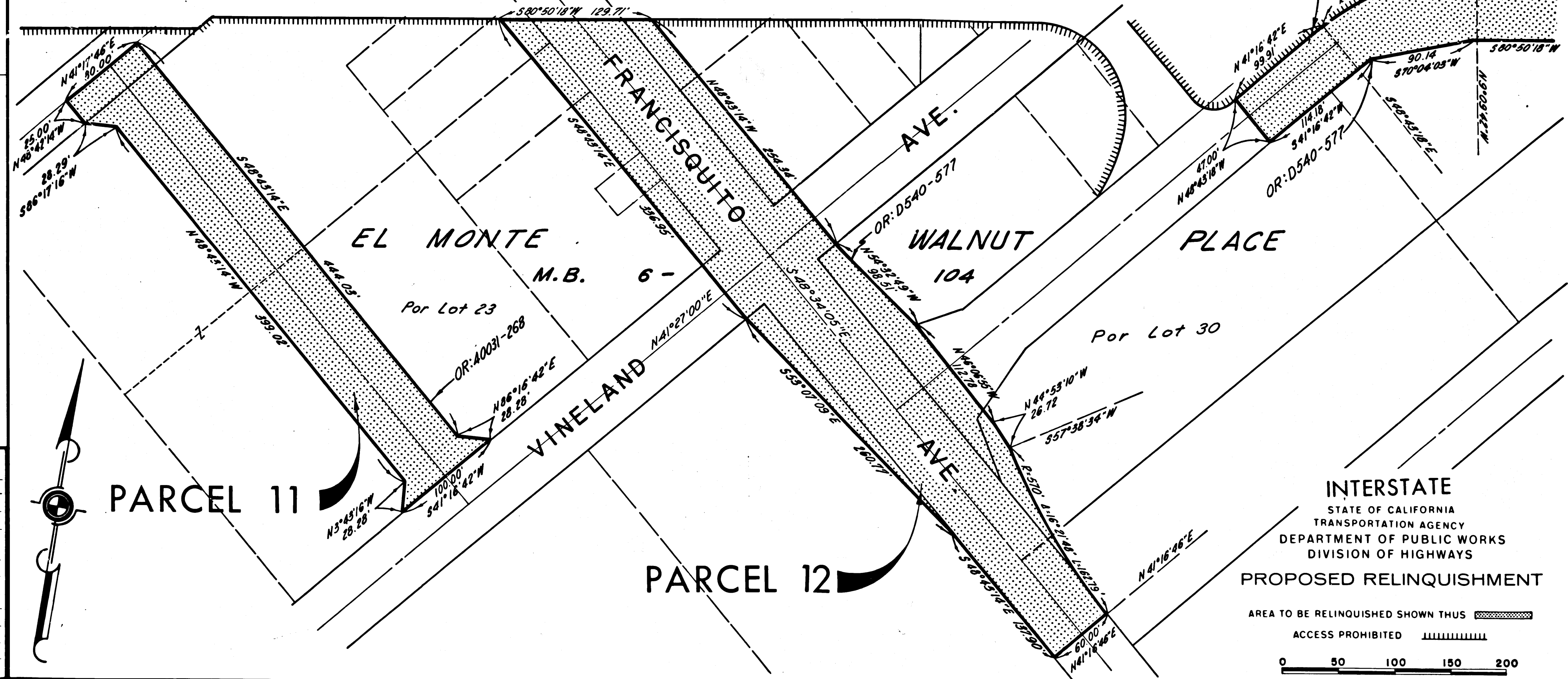
Anthony
 DEPUTY DISTRICT ENGINEER
 DATE May 11, 1967

FILED WITH LOS ANGELES
 COUNTY RECORDER, RAY E. LEE
 MAY 15 1967

BK 5
 PG 77

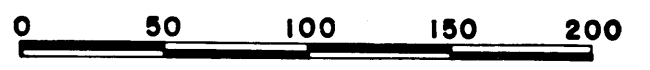
SAN BERNARDINO N80°50'18"E FWY.

PARCEL 13



Rev. 3-20-67
REL-575
 DRN BY *EEH*
 C.L.C. BY *MM*
 C.K'D BY *S.L.T.*
 BASE MAP NOS.
F-1860 &
F-1861
 REF. MAP NOS.
 AS BUILT NO'S

INTERSTATE
 STATE OF CALIFORNIA
 TRANSPORTATION AGENCY
 DEPARTMENT OF PUBLIC WORKS
 DIVISION OF HIGHWAYS
PROPOSED RELINQUISHMENT
 AREA TO BE RELINQUISHED SHOWN THUS
 ACCESS PROHIBITED

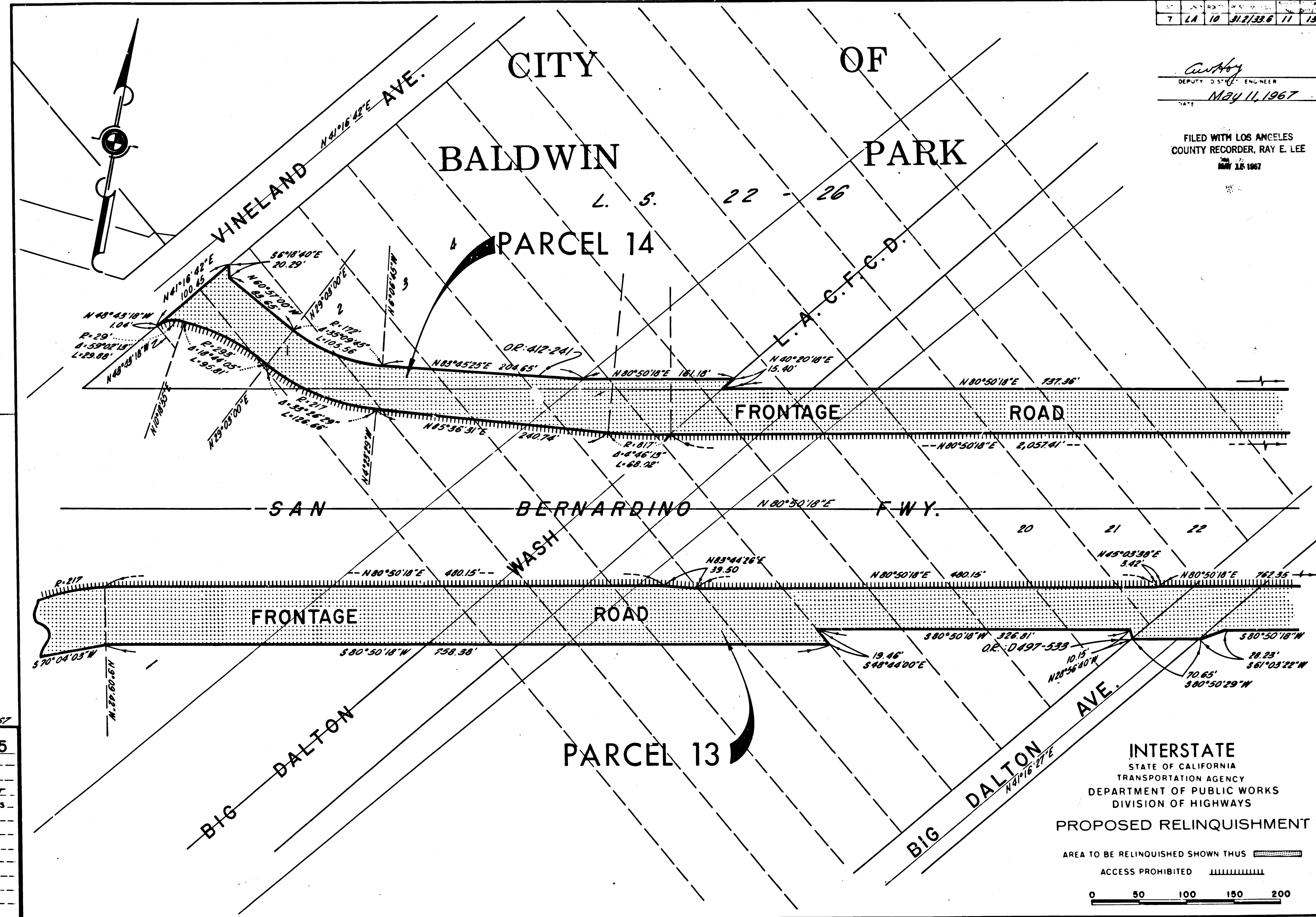


| | | | | | |
|---|----|----|-----------|----|----|
| 7 | LA | 10 | 31.2/33.6 | 11 | 13 |
|---|----|----|-----------|----|----|

Anthony
 DEPUTY DISTRICT ENGINEER
 DATE *May 11, 1967*

FILED WITH LOS ANGELES
 COUNTY RECORDER, RAY E. LEE
 MAY 15 1967

*345
178*



Rev. 3-20-67
REL-575
 DRN BY *EEH*
 C'LC BY *MM*
 C'D BY *S.L.T.*
 BASE MAP NO'S
F-1861
 REF. MAP NO'S
 AS BUILT NO'S

INTERSTATE
 STATE OF CALIFORNIA
 TRANSPORTATION AGENCY
 DEPARTMENT OF PUBLIC WORKS
 DIVISION OF HIGHWAYS
PROPOSED RELINQUISHMENT
 AREA TO BE RELINQUISHED SHOWN THUS [hatched pattern]
 ACCESS PROHIBITED [dashed line pattern]
 0 50 100 150 200

| | | | | | |
|---|----|----|-----------|----|----|
| 7 | LA | 10 | 31.2/33.6 | 12 | 13 |
|---|----|----|-----------|----|----|

Anthony
 DEPUTY COUNTY ENGINEER
 May 11, 1967

FILED WITH LOS ANGELES
 COUNTY RECORDER, RAY E. LEE
 MAY 15 1967

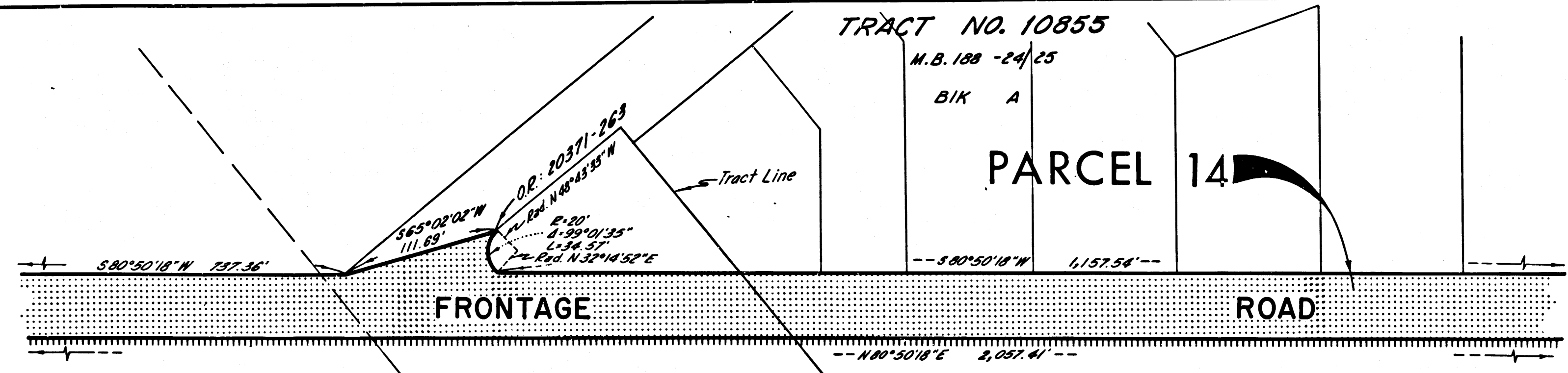
1345
 PG 79

TRACT NO. 10855

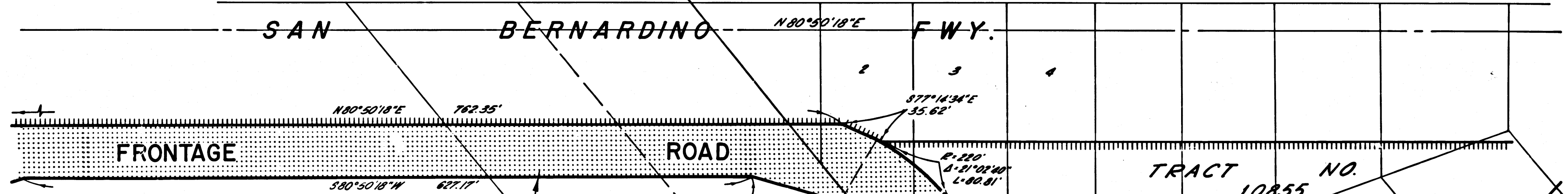
M.B. 188 - 24/25

BIK A

PARCEL 14



SAN BERNARDINO F.W.Y.



PARCEL 13
 EL MONTE WALNUT PLACE

M.B. 6 - 104

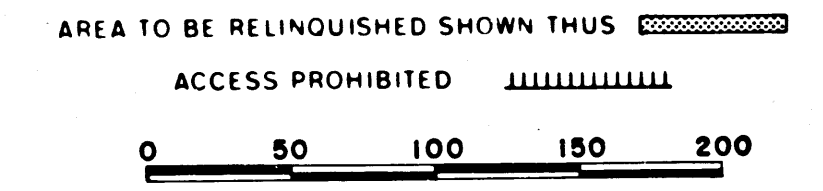
CITY OF

BALDWIN PARK

TRACT NO. 10855

M.B. 188 - 24/25

INTERSTATE
 STATE OF CALIFORNIA
 TRANSPORTATION AGENCY
 DEPARTMENT OF PUBLIC WORKS
 DIVISION OF HIGHWAYS
 PROPOSED RELINQUISHMENT



Rev. 3-20-67

REL-575
 DRN BY *EEH*
 C'LC BY *MM*
 CK'D BY *S.L.T.*
 BASE MAP NO'S
F-361
 REF. MAP NO'S
 AS BUILT NO'S

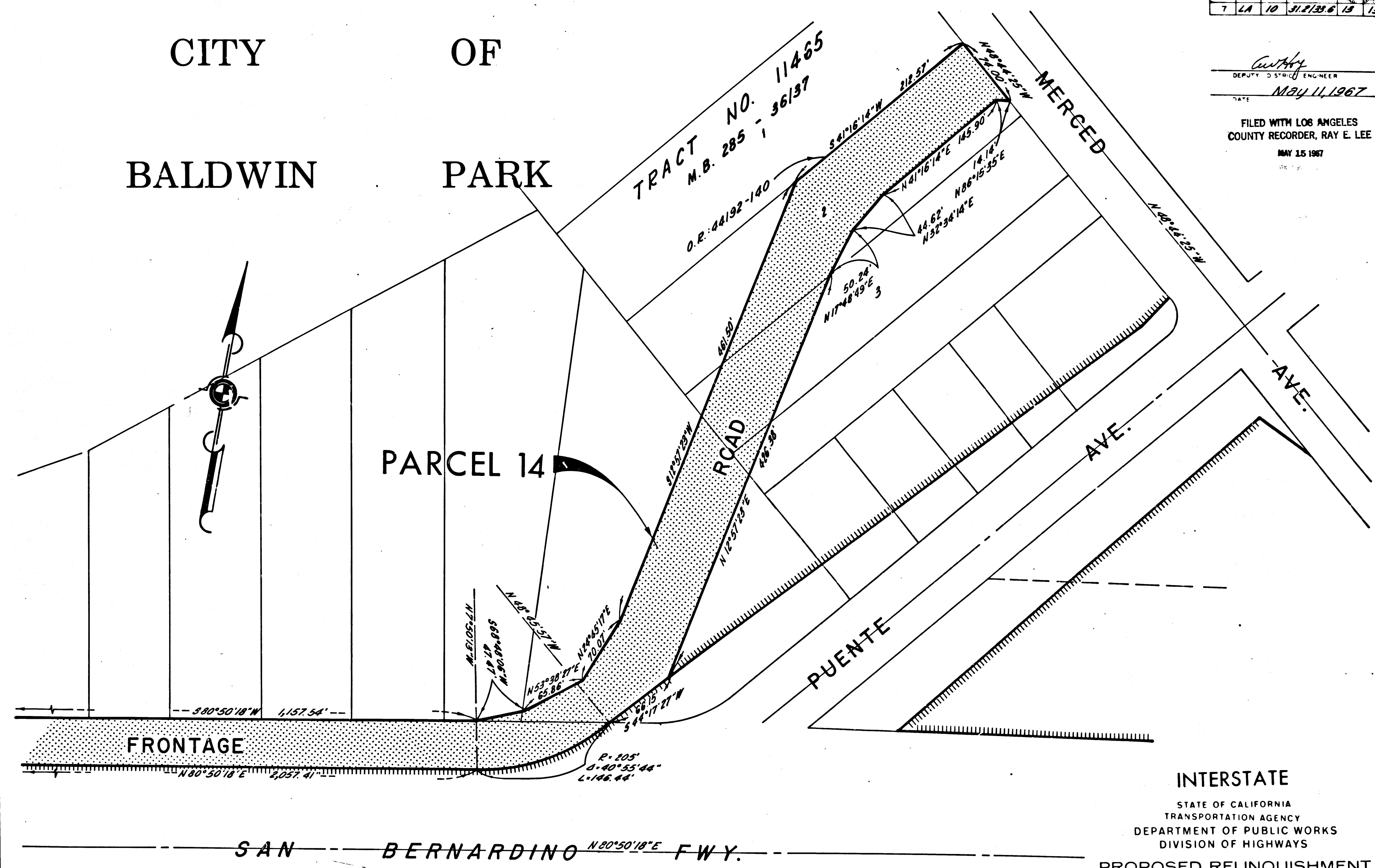
| | | | | | | |
|----|----|------|----|----|-----|------|
| ST | LN | ROOT | PL | ST | NO. | DATE |
| 7 | LA | 10 | 31 | 2 | 13 | 13 |

CITY OF
BALDWIN PARK

TRACT NO. 11465
M.B. 285 - 36137

Curry
DEPUTY DISTRICT ENGINEER
DATE May 11, 1967

FILED WITH LOS ANGELES
COUNTY RECORDER, RAY E. LEE
MAY 15 1967



BK 5
pg 80

Rev. 3-20-67

REL- 575
DRN BY *EEH*
C.L.C. BY *DLT*
C.K'D BY *DLP*
BASE MAP NO'S
F-1861
REF. MAP NOS.
AS BUILT NO'S

INTERSTATE
STATE OF CALIFORNIA
TRANSPORTATION AGENCY
DEPARTMENT OF PUBLIC WORKS
DIVISION OF HIGHWAYS
PROPOSED RELINQUISHMENT
AREA TO BE RELINQUISHED SHOWN THUS
ACCESS PROHIBITED

0 50 100 150 200