

DIST	COUNTY	ROUTE	POST MILES.	SHEET NO.	TOTAL SHEETS
7	LA	60	4.5/8.7	1	10

STATE OF CALIFORNIA
 TRANSPORTATION AGENCY
 DEPARTMENT OF PUBLIC WORKS
 DIVISION OF HIGHWAYS

3940

Anthony
 DEPUTY DISTRICT ENGINEER
 DATE *May 15, 1967*

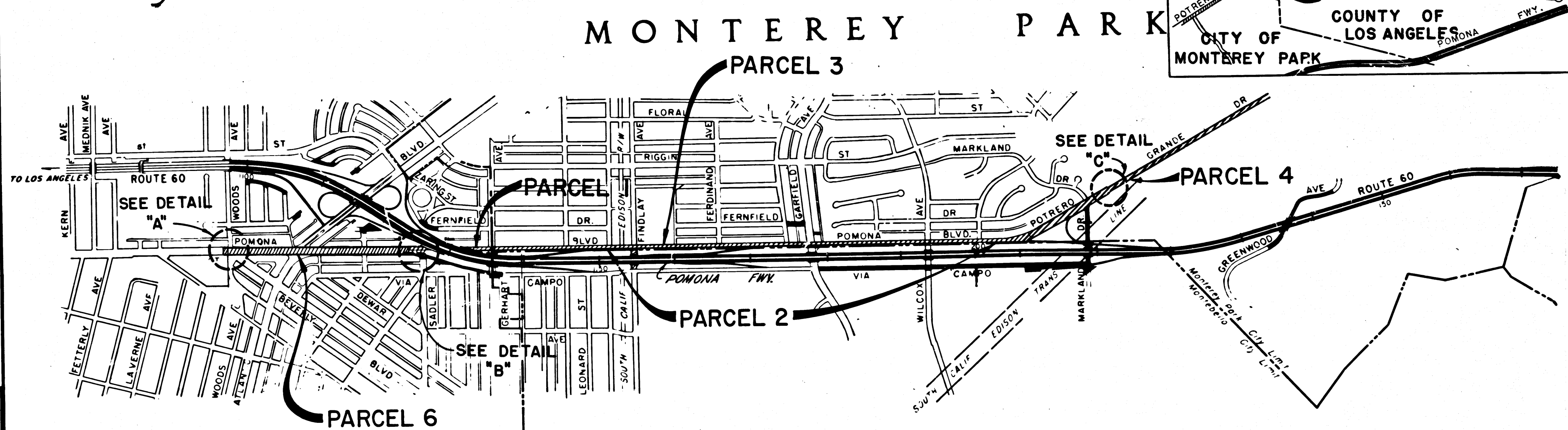
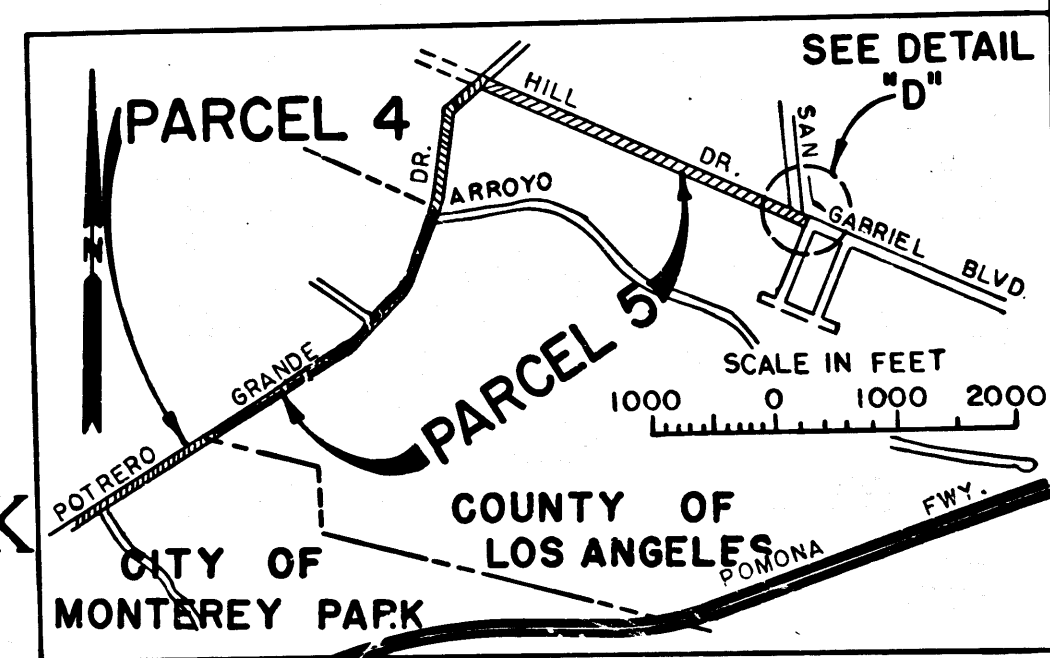
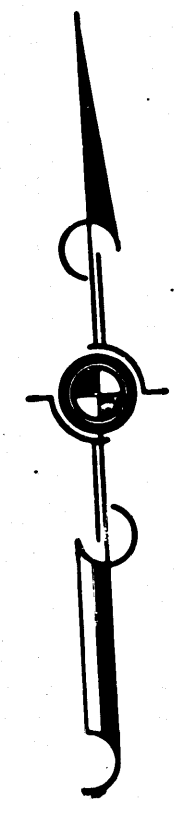
RECORDED
 AT REQUEST OF
 DEPT. OF PUBLIC WORKS
 MAY 19 1967
 10 48 P.M.

IN BOOK 5
 AT PAGE 83
 OF STATE HIGHWAY MAPS
 LOS ANGELES COUNTY, CALIF.
 RAY E. LEE
 COUNTY RECORDER
 BY *[Signature]* Deputy

BK 5
Pg 83

RIGHT OF WAY MAPS OF
STATE HIGHWAY

In Los Angeles County in and near Montebello and
 Monterey Park between Woods Avenue and San Gabriel Blvd.



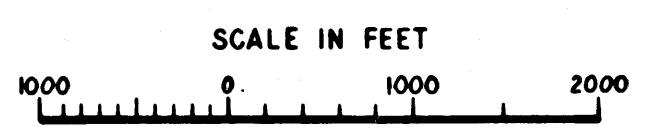
COUNTY OF
LOS ANGELES

MONTEBELLO

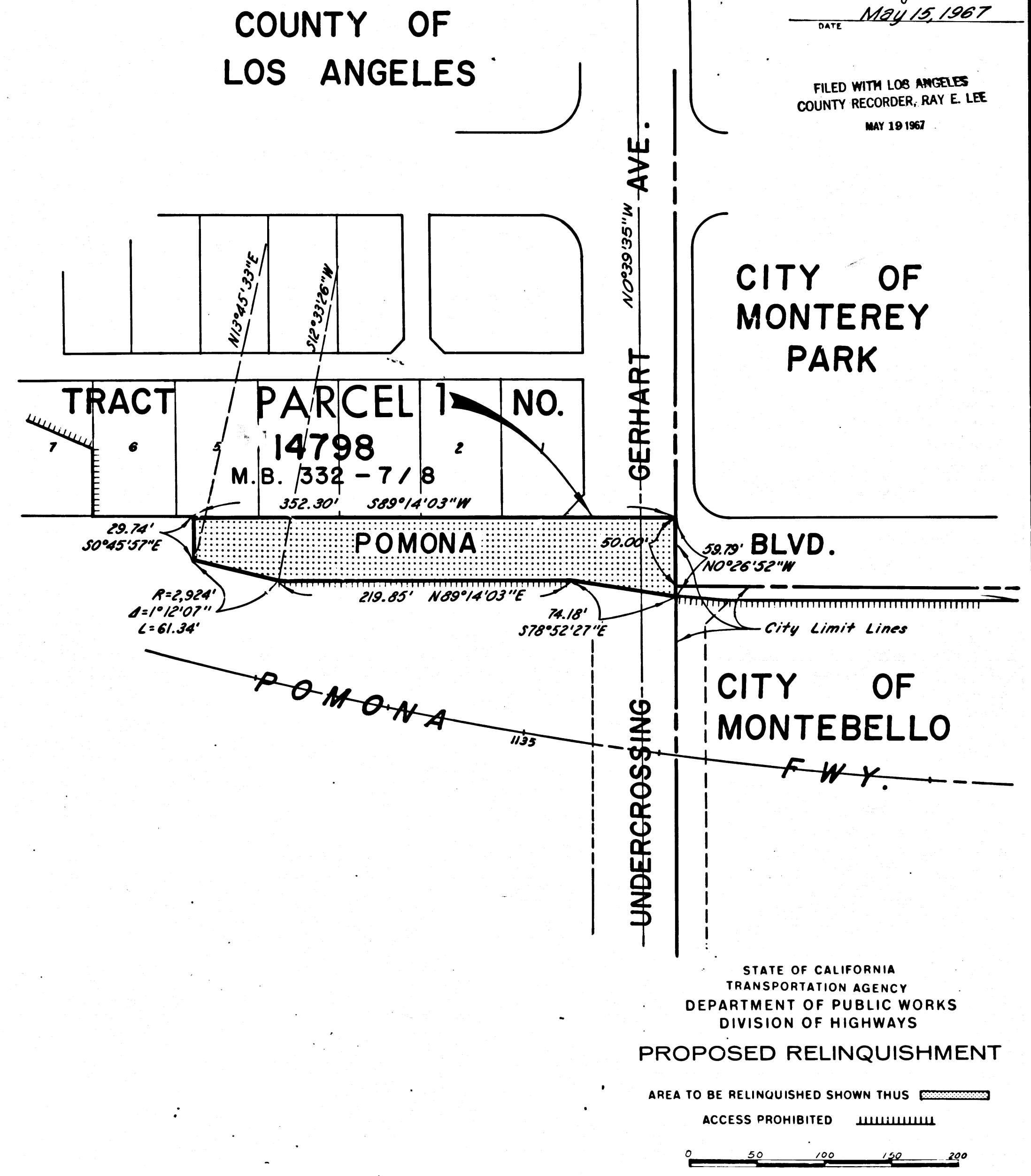
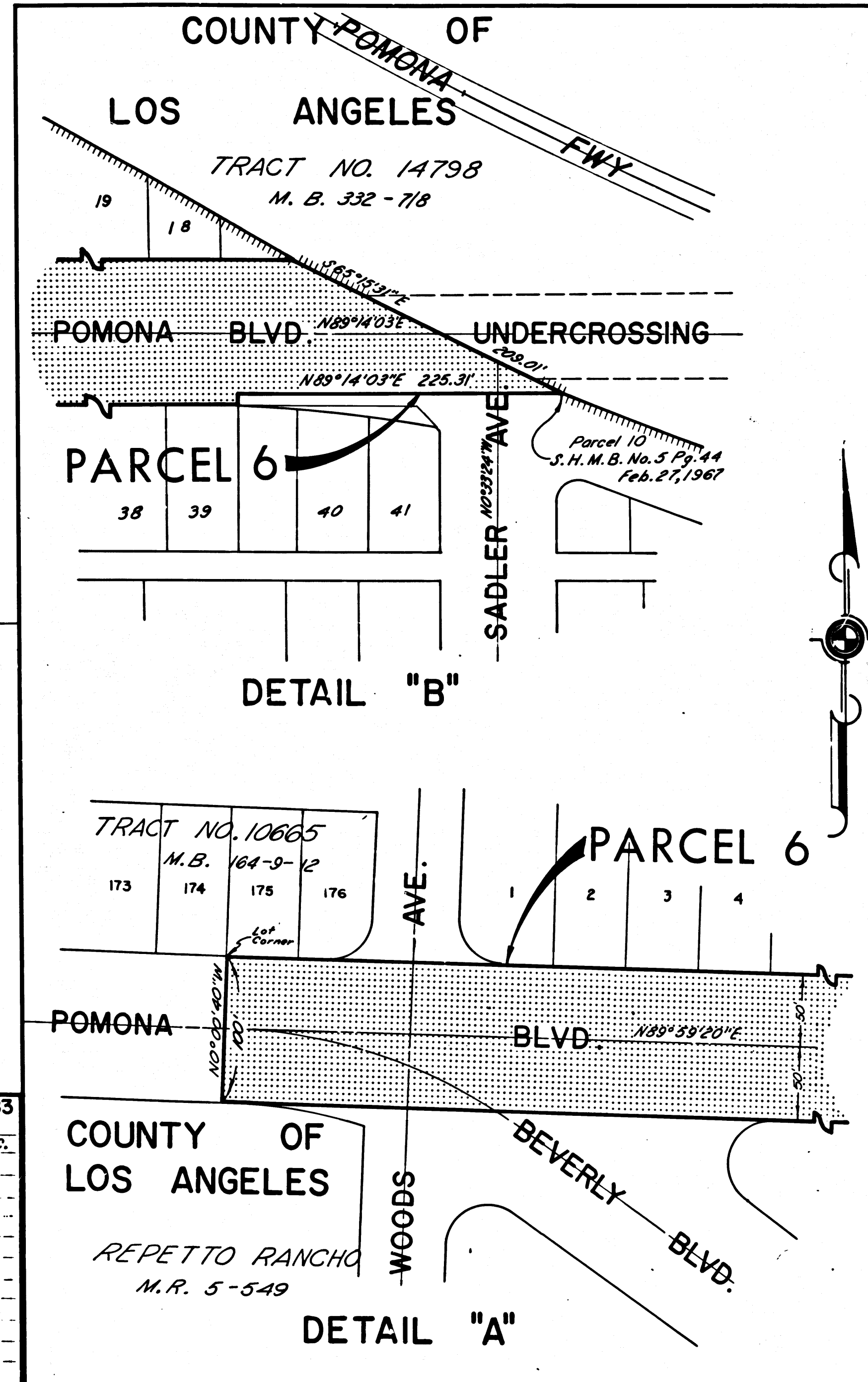
STATE OF CALIFORNIA
 TRANSPORTATION AGENCY
 DEPARTMENT OF PUBLIC WORKS
 DIVISION OF HIGHWAYS
PROPOSED RELINQUISHMENT

AREA TO BE RELINQUISHED SHOWN THUS

582,583
 REL-584
 DRN BY M.A.C.
 CLC BY V.F.
 CKD BY S.L.T.
 BASE MAP NO'S
 F-1782, F-1783, F-1784,
 F-1785 & F-4601
 REF. MAP NO'S
 C.C.M. 815.8
 AS BUILT NO'S
 185-B



DIST.	COUNTY	ROUTE	POST. MILES.	SHEET No.	TOTAL SHEETS
7	LA	60	4.5/8.7	2	10



Anthony
DEPUTY DISTRICT ENGINEER
DATE May 15, 1967

FILED WITH LOS ANGELES
COUNTY RECORDER, RAY E. LEE
MAY 19 1967

BK 5
Pg 84

582,583
REL-584
DRN BY M.A.C.
C'LC BY J.F.
CKD BY S.L.T.
BASE MAP NOS.
E-1782, F1783
P-4601
REF. MAP NOS.
AS BUILT NOS.
165-8

CITY OF MONTEREY PARK

DIST	COUNTY	ROUTE	POST MILES	SHEET NO	TOTAL SHEETS
7	LA	60	4.5/8.7	4	10

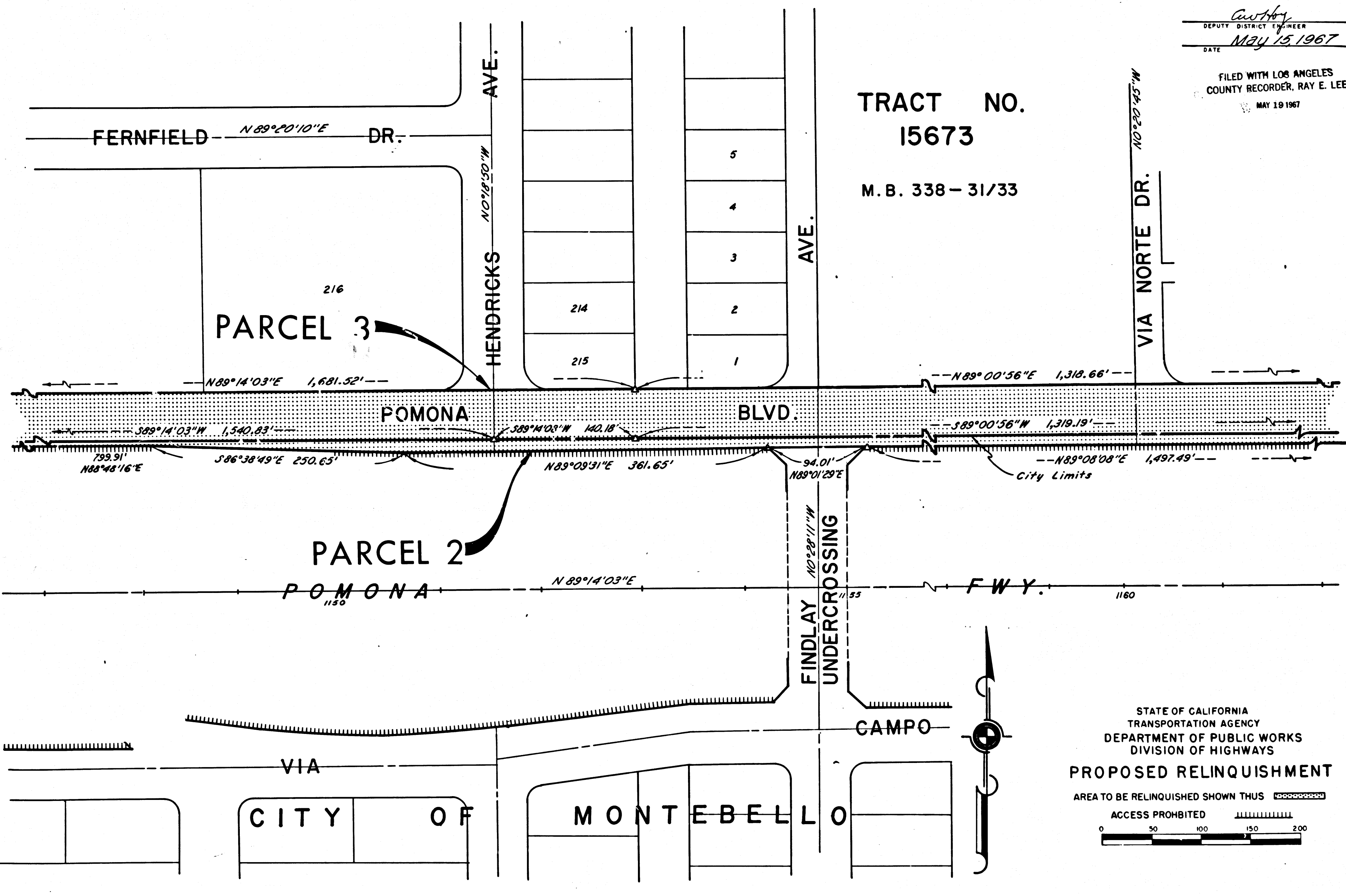
C. W. Hoy
 DEPUTY DISTRICT ENGINEER
 DATE *MAY 15, 1967*

FILED WITH LOS ANGELES
 COUNTY RECORDER, RAY E. LEE
 MAY 19 1967

RKJ
PKB

TRACT NO.
15673

M. B. 338 - 31/33



582,583
 REL-584
 DRN BY M.A.C.
 C.L.C BY J.F.
 CK'D BY S.L.T.
 BASE MAP NO'S
 E-1783
 REF. MAP NOS.
 AS BUILT NO'S
 185-8

STATE OF CALIFORNIA
 TRANSPORTATION AGENCY
 DEPARTMENT OF PUBLIC WORKS
 DIVISION OF HIGHWAYS
 PROPOSED RELINQUISHMENT
 AREA TO BE RELINQUISHED SHOWN THUS [hatched pattern]
 ACCESS PROHIBITED [hatched pattern]
 0 50 100 150 200

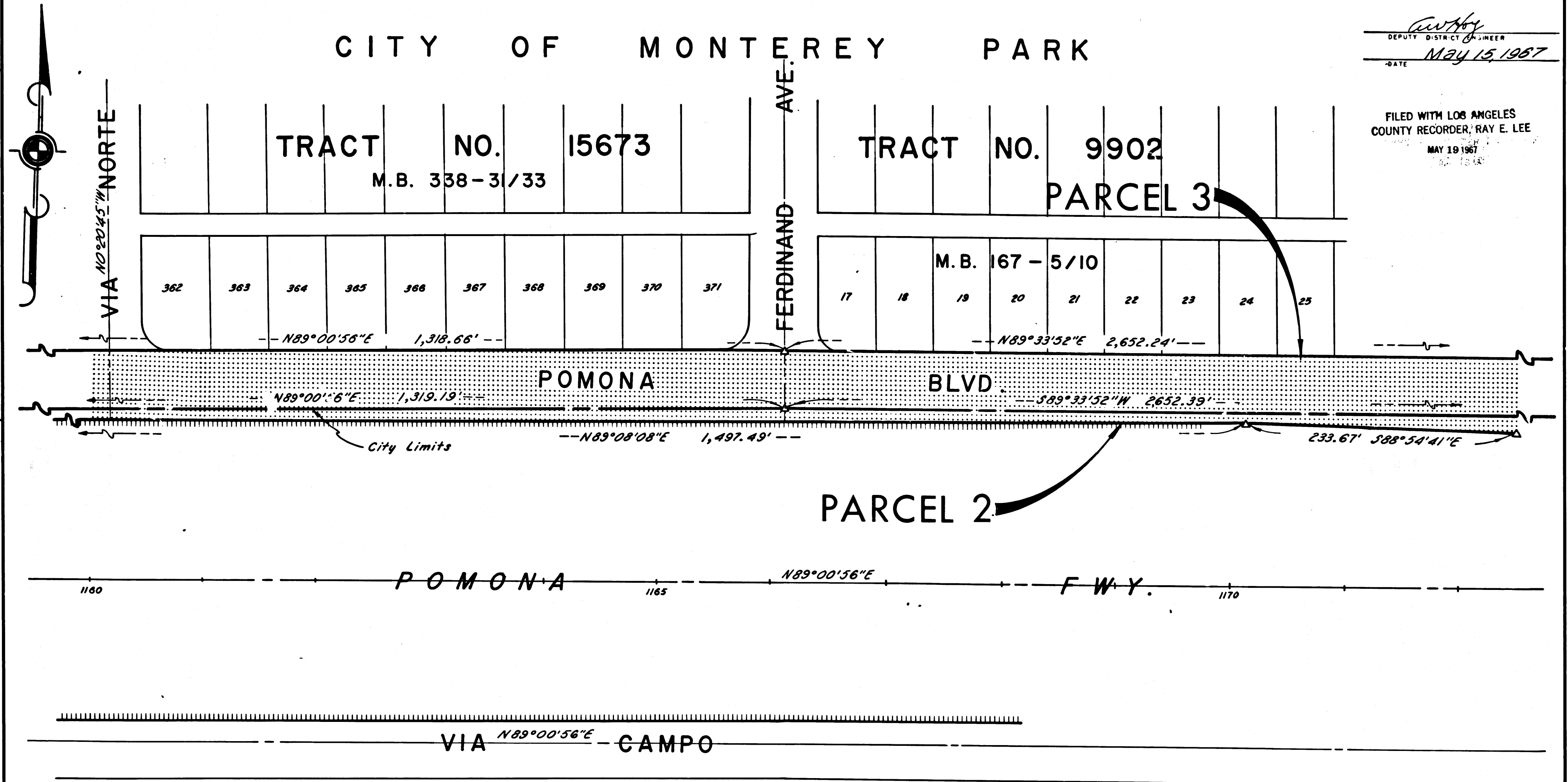
DIST.	COUNTY	ROUTE	POST MILES	SHEET NO.	TOTAL SHEETS
7	LA	60	4.5/8.7	5	10

CITY OF MONTEREY PARK

Anthony
 DEPUTY DISTRICT ENGINEER
 DATE *MAY 15, 1987*

FILED WITH LOS ANGELES
 COUNTY RECORDER, RAY E. LEE
 MAY 19 1987

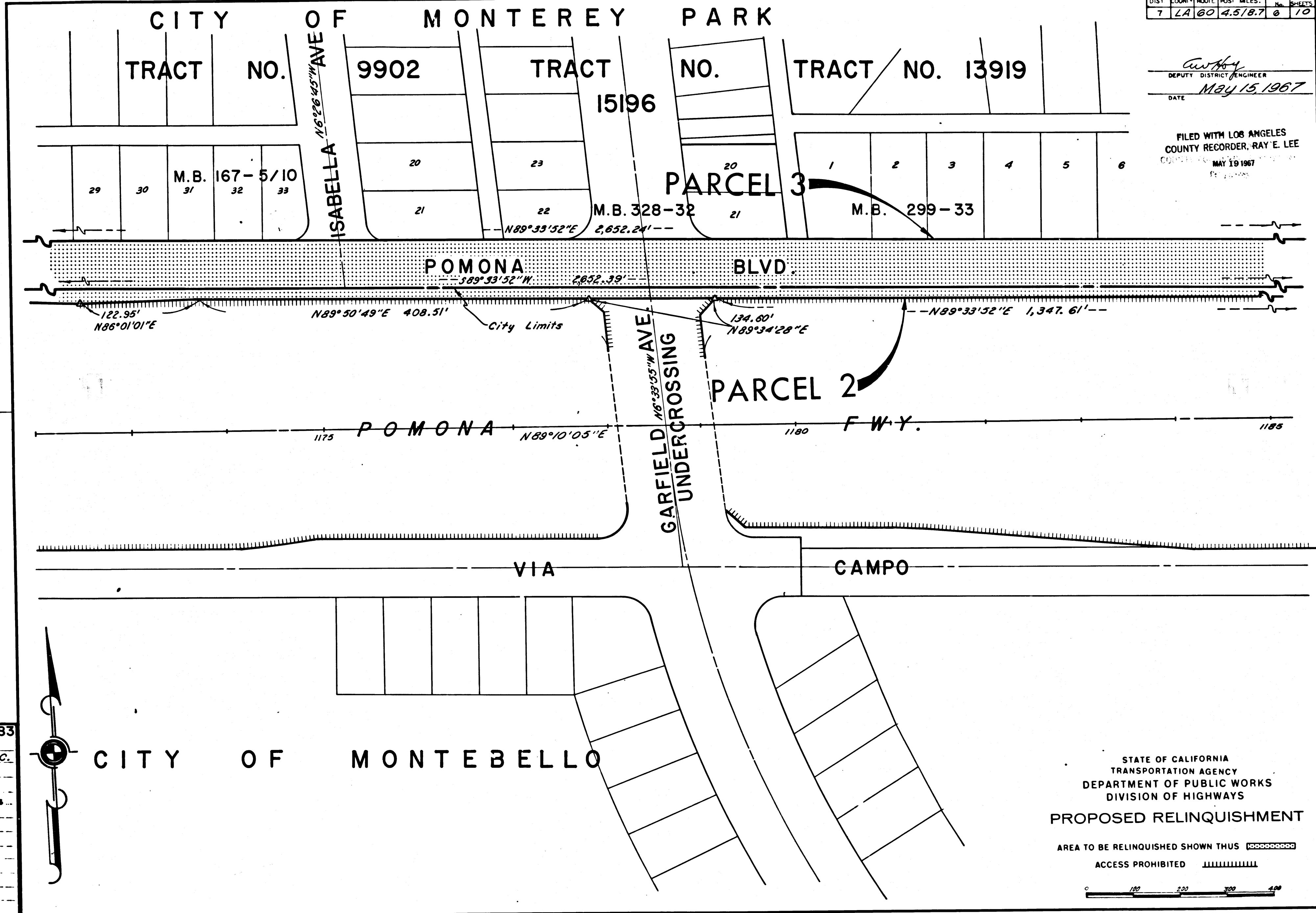
*BK 5
 Pg 87*



582,583
 REL-584
 DWN BY *M.A.C.*
 C'LC BY *J.F.*
 CKD BY *S.L.T.*
 BASE MAP NO'S
F-1784
 REF. MAP NO'S
 AS BUILT NO'S
165-8

CITY OF MONTEBELLO

STATE OF CALIFORNIA
 TRANSPORTATION AGENCY
 DEPARTMENT OF PUBLIC WORKS
 DIVISION OF HIGHWAYS
 PROPOSED RELINQUISHMENT
 AREA TO BE RELINQUISHED SHOWN THUS ACCESS PROHIBITED
 0 50 100 150 200



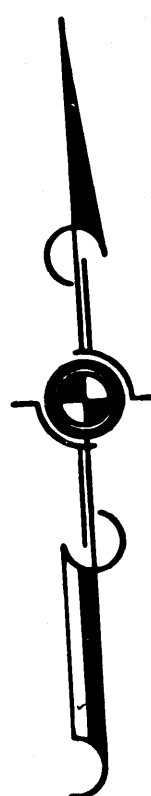
DIST	COUNTY	ROUTE	POST MILES	SHEET No.	TOTAL SHEETS
7	LA	60	4.5/8.7	6	10

Anthony
 DEPUTY DISTRICT ENGINEER
 DATE *May 15, 1967*

FILED WITH LOS ANGELES
 COUNTY RECORDER, RAY E. LEE
 MAY 19 1967

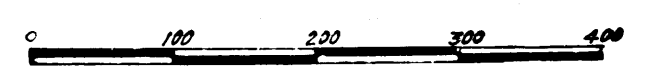
*BLK 5
 18/88*

582,583
REL-584
 DRN BY *M.A.C.*
 C'LC BY *J.F.*
 CK'D BY *S.L.T.*
 BASE MAP NO'S
F-1784
 REF. MAP NO'S
 AS BUILT NO'S
165-8



STATE OF CALIFORNIA
 TRANSPORTATION AGENCY
 DEPARTMENT OF PUBLIC WORKS
 DIVISION OF HIGHWAYS
PROPOSED RELINQUISHMENT

AREA TO BE RELINQUISHED SHOWN THUS ACCESS PROHIBITED

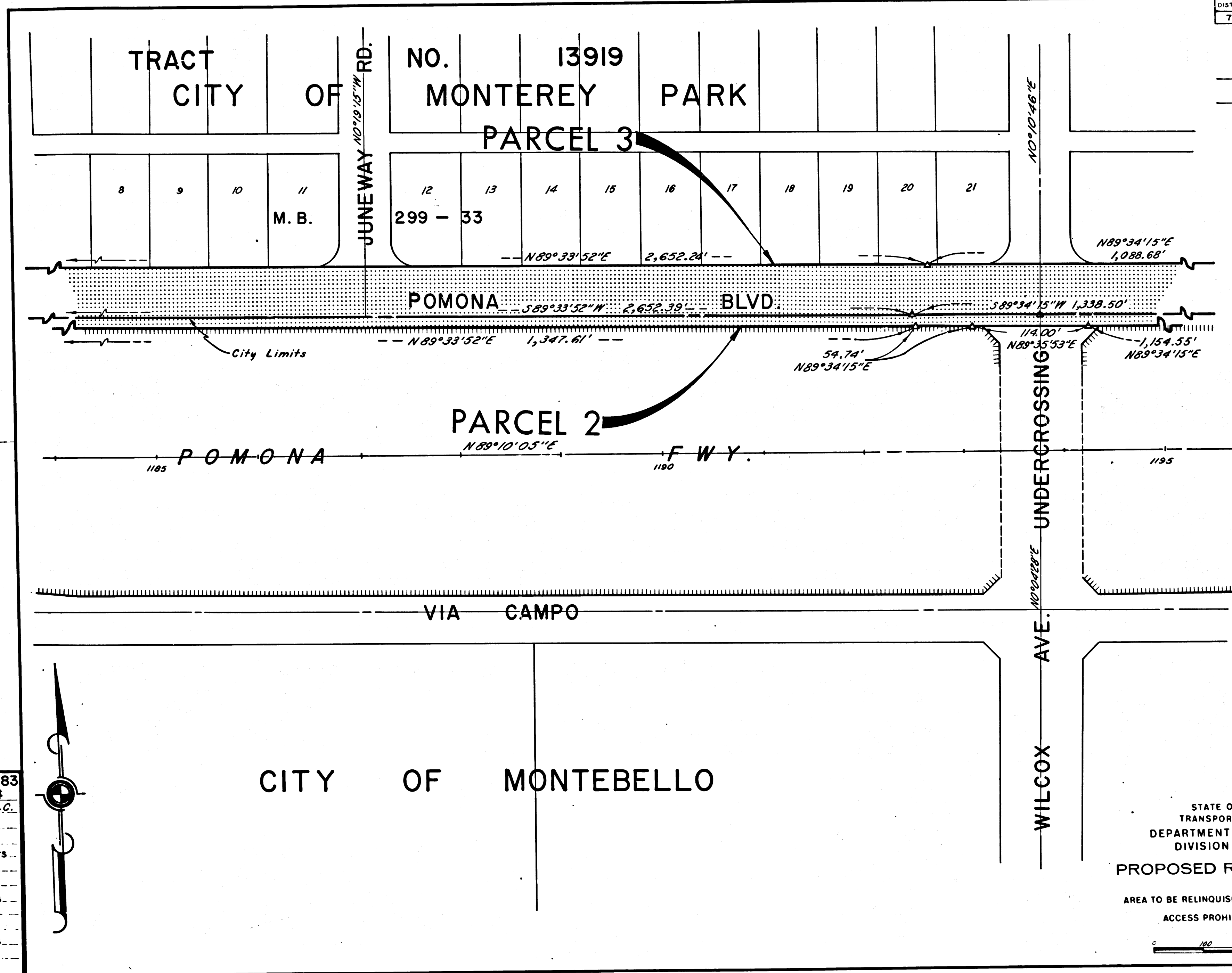


DIST	COUNTY	ROUTE	POST MILE	SHEET No.	TOTAL SHEETS
7	LA	60	4.5/8.7	7	10

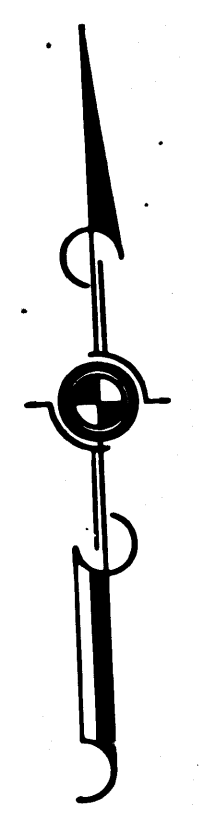
Anthony
 DEPUTY DISTRICT ENGINEER
 DATE MAY 15, 1967

FILED WITH LOS ANGELES
 COUNTY RECORDER, RAY E. LEE
 MAY 19 1967

BK 5
 PG 89

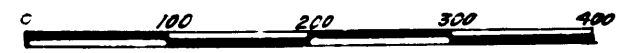


582,583
 REL-584
 DRN BY M.A.C.
 C'LC BY J.F.
 CK'D BY
 BASE MAP NO'S
F-1785
 REF. MAP NO'S
 AS BUILT NO'S
185-8



STATE OF CALIFORNIA
 TRANSPORTATION AGENCY
 DEPARTMENT OF PUBLIC WORKS
 DIVISION OF HIGHWAYS
PROPOSED RELINQUISHMENT

AREA TO BE RELINQUISHED SHOWN THUS
 ACCESS PROHIBITED



DIST	COUNTY	ROUTE	POST MILES	SHEET NO.	TOTAL SHEETS
7	LA	60	4.5/8.7	8	10

Anthony
 DEPUTY DISTRICT ENGINEER
 DATE *May 15, 1967*

FILED WITH LOS ANGELES
 COUNTY RECORDER, RAY E. LEE
 MAY 19 1967

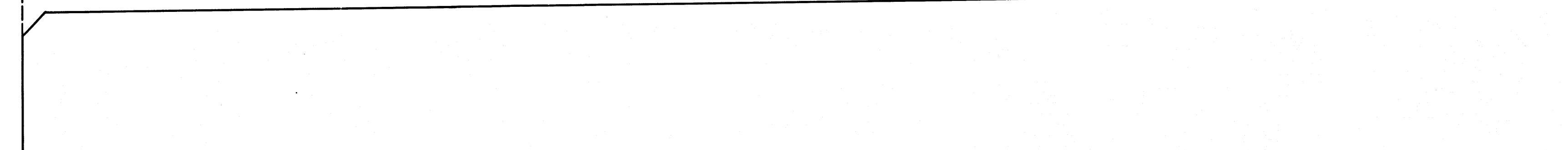
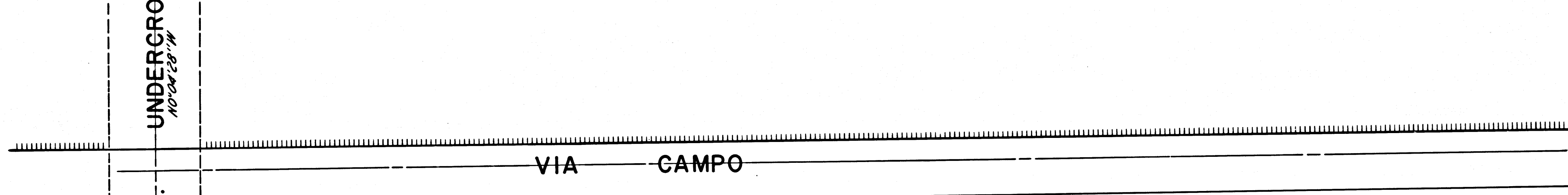
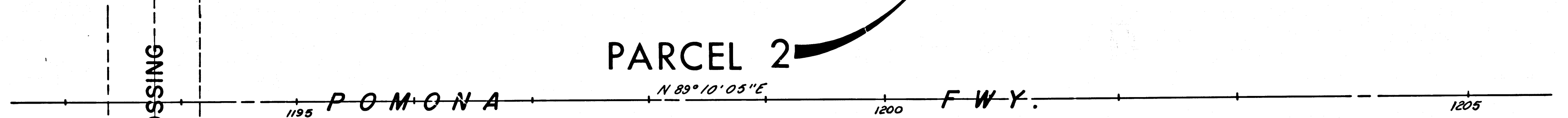
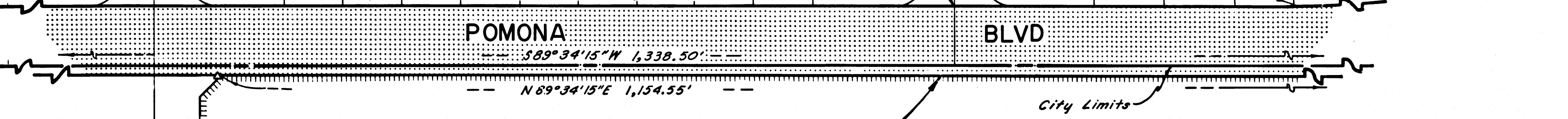
*Bk 5
Pg 90*

CITY OF MONTEREY
 TRACT NO.

PARK
 15112

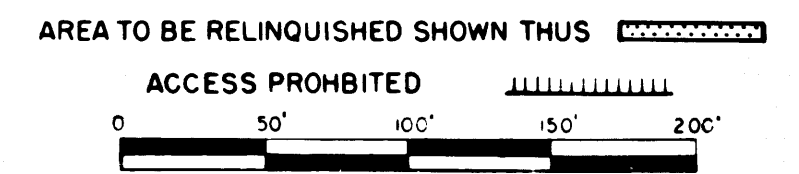
1 2 3 4 5 6 7 8 9 10
 M. B. 323 - 20
 --- N89°34'15"E 1,088.68' ---

11 12 13 14



CITY OF MONTEBELLO

STATE OF CALIFORNIA
 TRANSPORTATION AGENCY
 DEPARTMENT OF PUBLIC WORKS
 DIVISION OF HIGHWAYS
PROPOSED RELINQUISHMENT



582,583
 REL-584
 DWN BY M.A.C.
 C.L.C. BY J.F.
 C.V.D. BY S.L.T.
 BASE MAP NOS
 F-1785
 REF. MAP NOS
 AS BUILT NO'S
 165-8

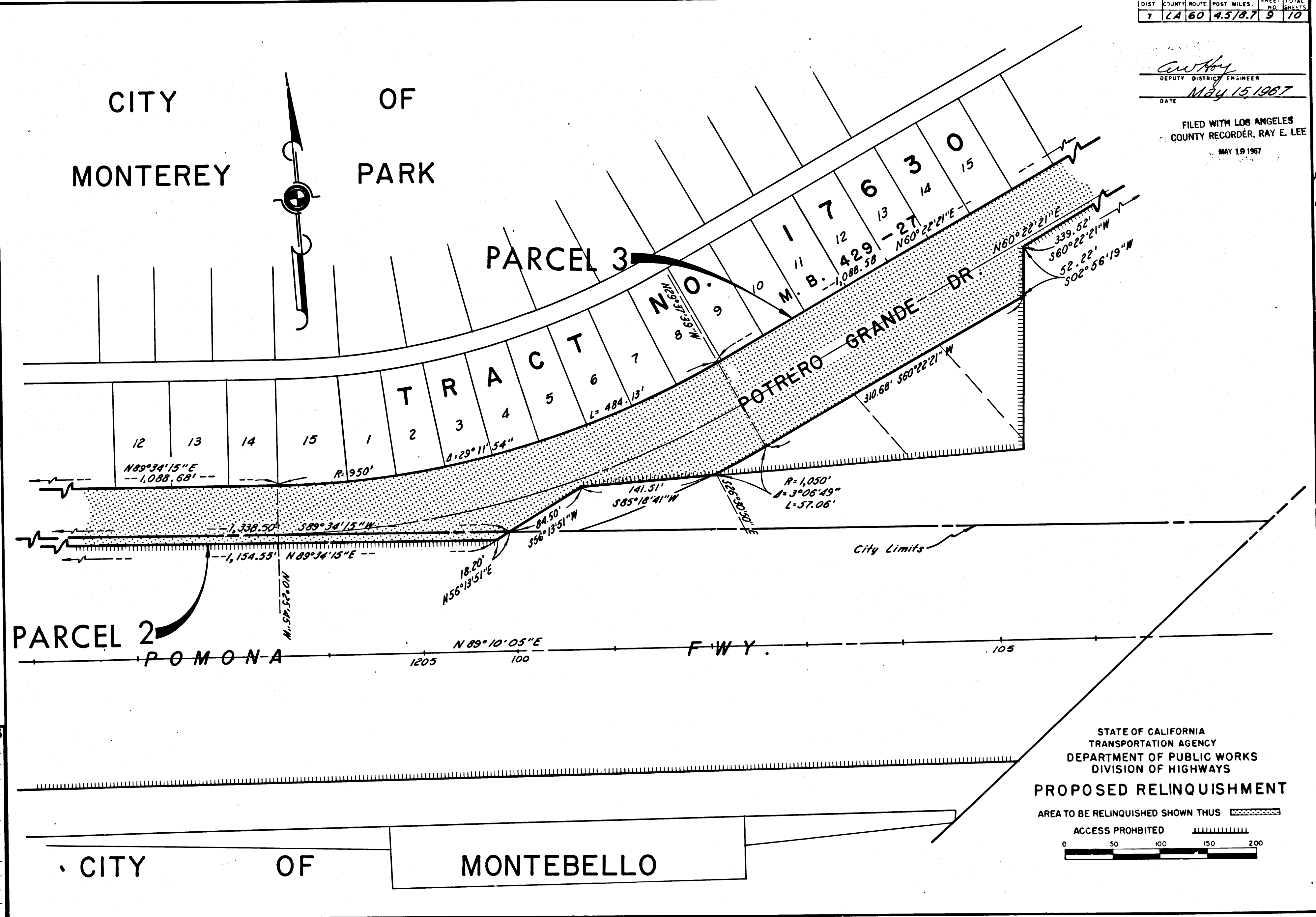
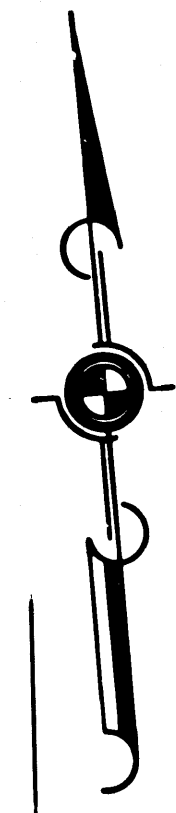


DIST	COUNTY	ROUTE	POST MILES	SHEET NO.	TOTAL SHEETS
7	LA	60	4.5/8.7	9	10

C.W. Avey
 DEPUTY DISTRICT ENGINEER
 DATE MAY 15, 1967

FILED WITH LOS ANGELES
 COUNTY RECORDER, RAY E. LEE
 MAY 19 1967

CITY OF
 MONTEREY PARK



582,583
REL-584
 DRN BY *M.A.C.*
 C.L.C. BY *J.F.*
 CK'D BY *S.L.T.*
 BASE MAP NO'S
F-1765
 REF. MAP NOS.
 AS BUILT NO'S
165-8

STATE OF CALIFORNIA
 TRANSPORTATION AGENCY
 DEPARTMENT OF PUBLIC WORKS
 DIVISION OF HIGHWAYS
PROPOSED RELINQUISHMENT
 AREA TO BE RELINQUISHED SHOWN THUS
 ACCESS PROHIBITED
 0 50 100 150 200

CITY OF MONTEBELLO

*BK 5
 Pg 91*

DIST	COUNTY	ROUTE	POST MILES	SHEET NO.	TOTAL SHEETS
7	LA	60	4.5/8.7	10	10

CITY OF MONTEREY PARK

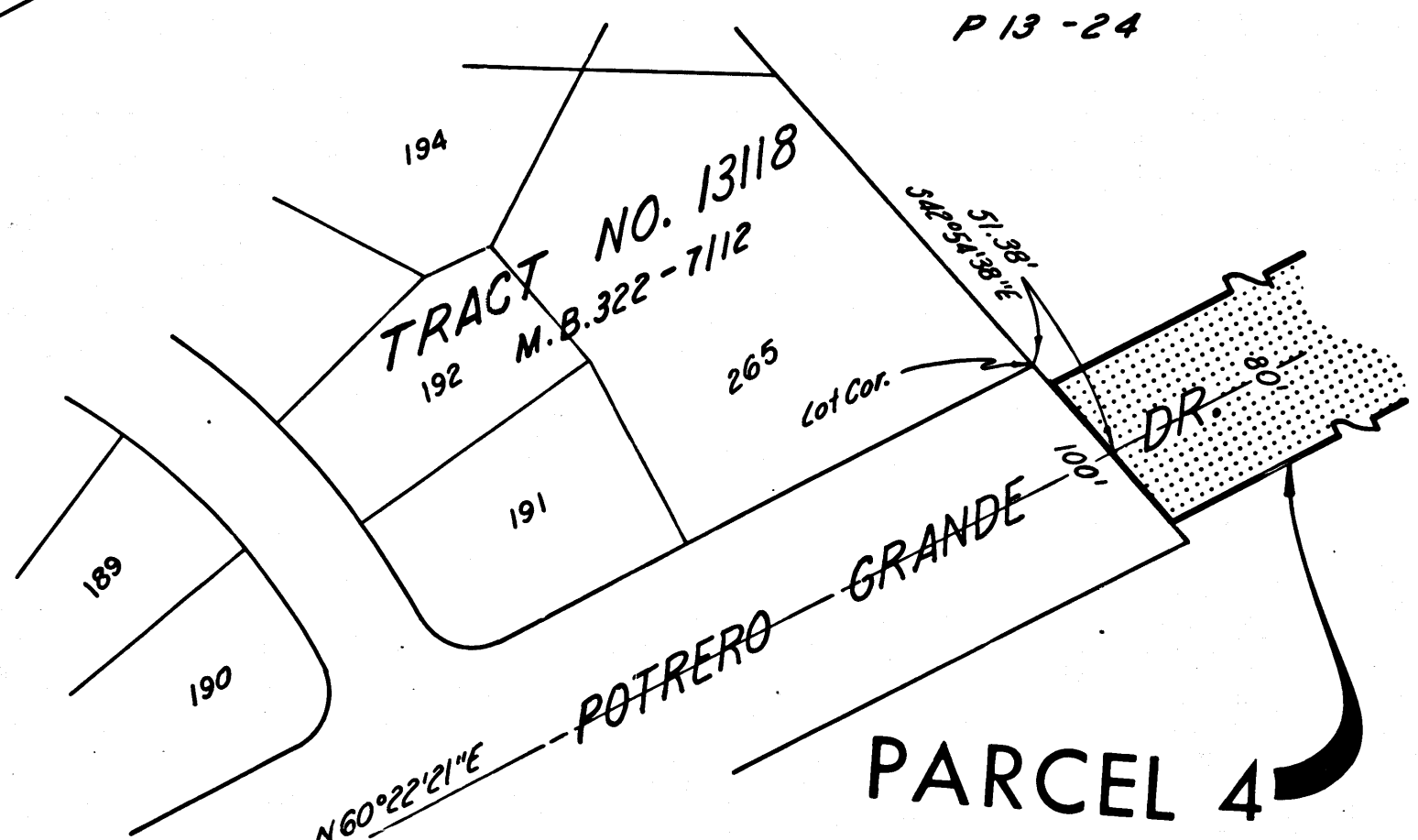
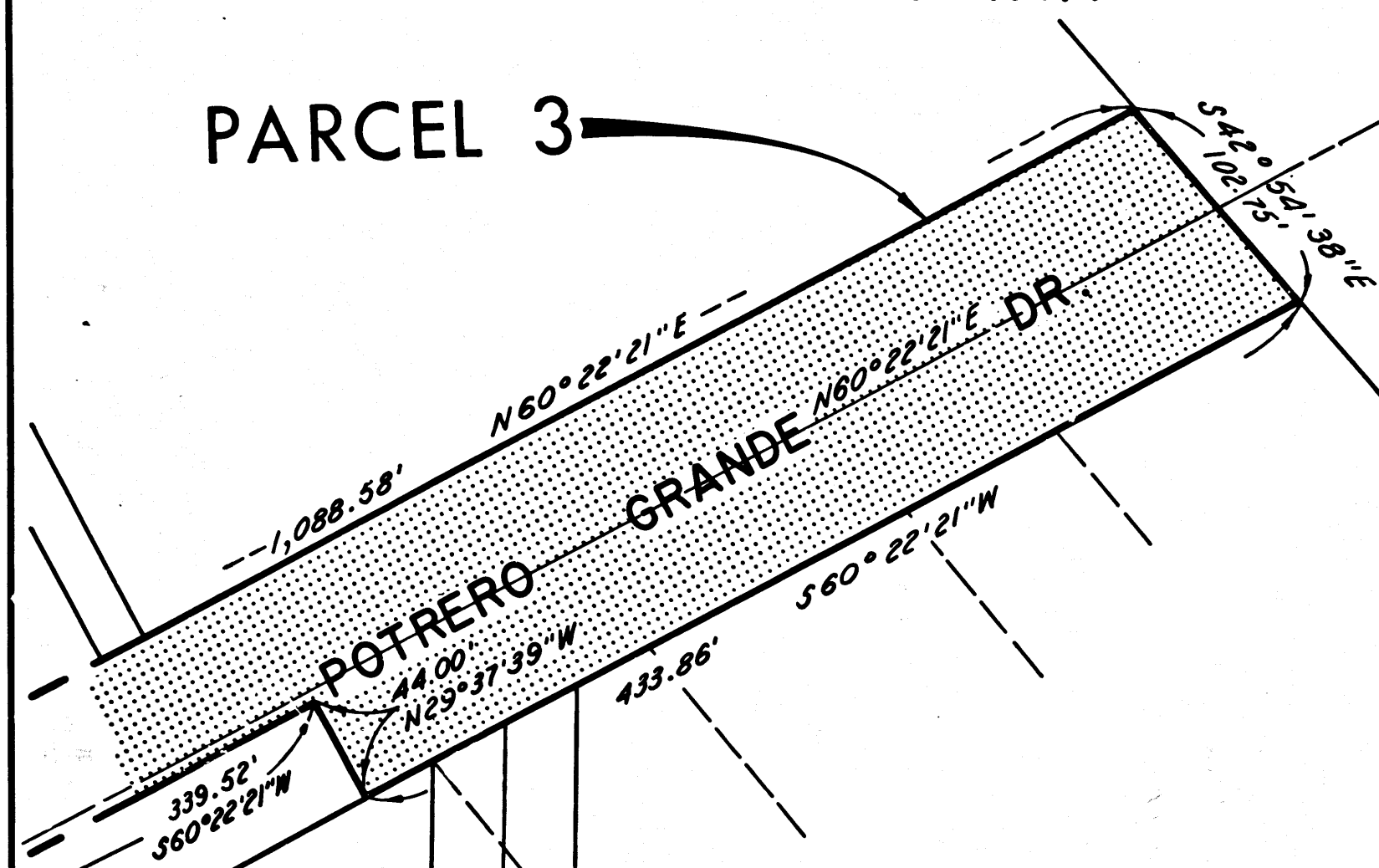
CITY OF MONTEREY PARK
Re LA Merced
P 13 - 24

Anthony
DEPUTY DISTRICT ENGINEER
DATE MAY 15, 1967

FILED WITH LOS ANGELES COUNTY RECORDER, RAY E. LEE
MAY 19 1967

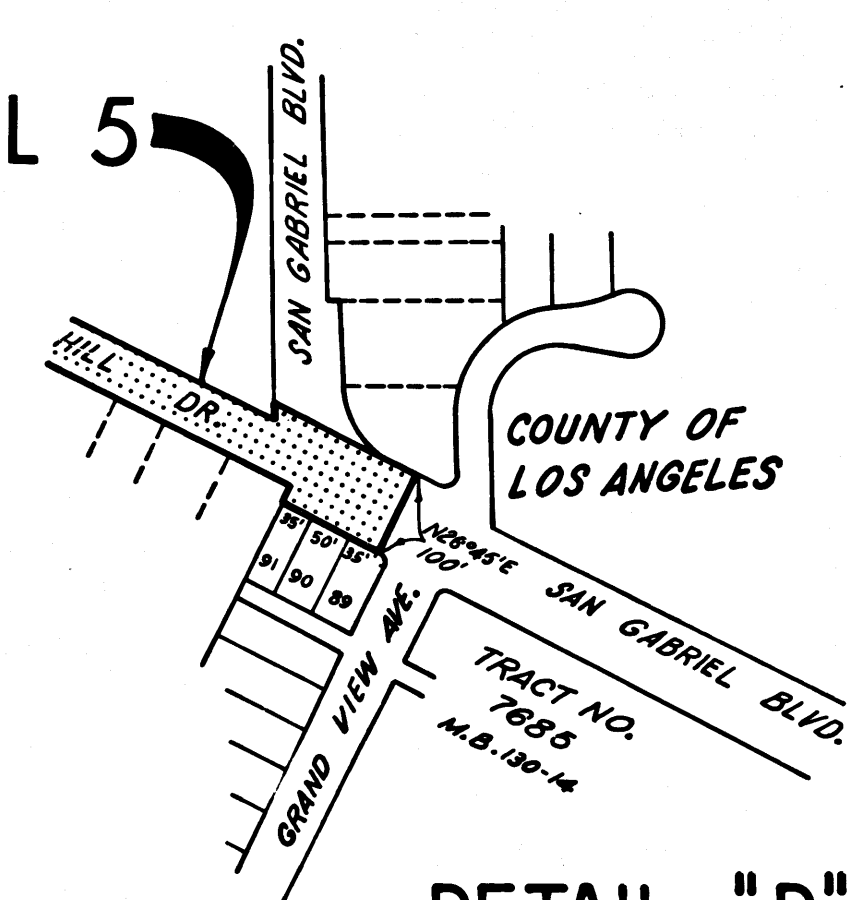
PARCEL 3

PARCEL 4

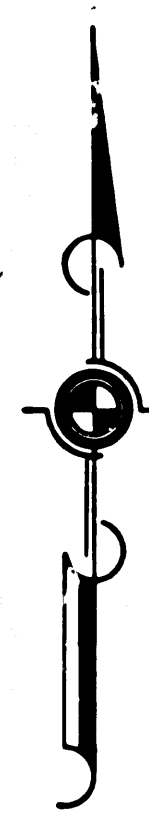


DETAIL "C"
No Scale

PARCEL 5



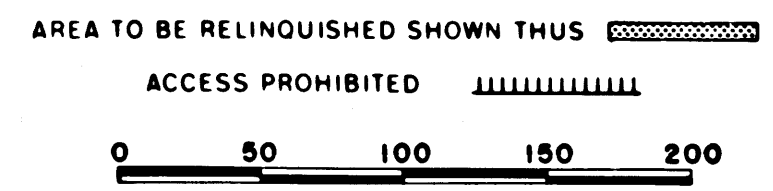
DETAIL "D"
No Scale



582,583
REL-584
DRN BY M.A.C.
C.L.C BY J.F.
CK'D BY S.L.T.
BASE MAP NO'S F-1785
REF. MAP NO'S
AS BUILT NO'S 165-8

POMONA F.W.Y.
189°10'05"E

STATE OF CALIFORNIA
TRANSPORTATION AGENCY
DEPARTMENT OF PUBLIC WORKS
DIVISION OF HIGHWAYS
PROPOSED RELINQUISHMENT



OK 5
08 92