

DIST.	COUNTY	ROUTE	POST MILES	SHEET NO.	TOTAL SHEETS
7	L.A.	605	0.3-3.8	1	5

STATE OF CALIFORNIA
 HIGHWAY TRANSPORTATION AGENCY
 DEPARTMENT OF PUBLIC WORKS
 DIVISION OF HIGHWAYS

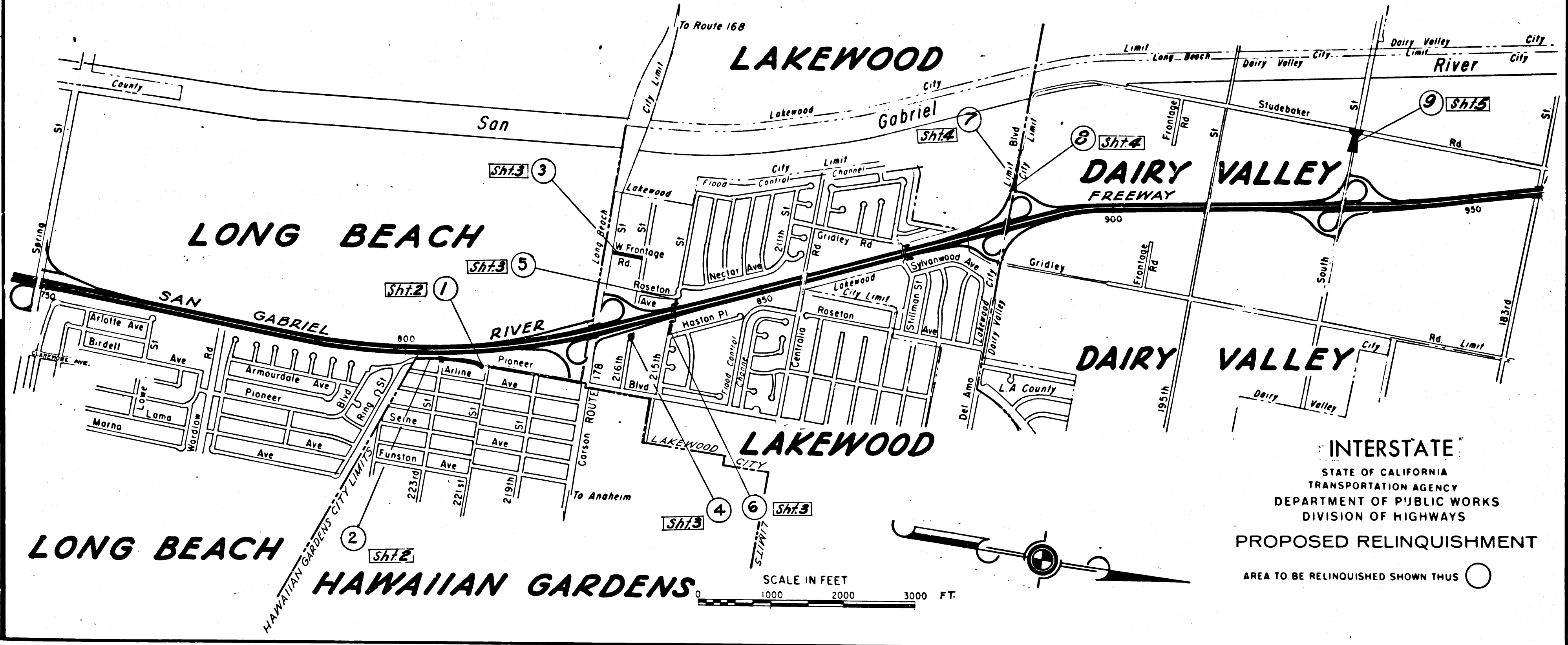
2203

RECORDED
 AT REQUEST OF
 DEPT. OF PUBLIC WORKS
 JUNE 19, 1967
 25 MIN. PAST
 11 A.M.
 IN BOOK 5
 AT PAGE 93
 OF STATE HIGHWAY MAPS
 LOS ANGELES COUNTY, CALIF.
 RAY E. LEE
 COUNTY RECORDER
 J. Free
 Deputy

R. L. Hamann
 DEPUTY DISTRICT ENGINEER
 DATE June 15, 1967

PLANS FOR CONSTRUCTION ON
STATE HIGHWAY
 In Los Angeles County
 on Route 605 between Spring St. and South St.

BK 5
 188
 93
 and
 1125
 6141



REL 537
 538
 540
 541
 DRAWN BY L. D.
 C.L.C. BY R.S.D.
 C.K'D BY M.M.
 BASE MAP NOS.
 F.1956
 F.1957
 REF. MAP NOS.
 C.C.M. 208.2
 AS BUILT NOS.
 163-12

INTERSTATE
 STATE OF CALIFORNIA
 TRANSPORTATION AGENCY
 DEPARTMENT OF PUBLIC WORKS
 DIVISION OF HIGHWAYS
 PROPOSED RELINQUISHMENT
 AREA TO BE RELINQUISHED SHOWN THUS ○

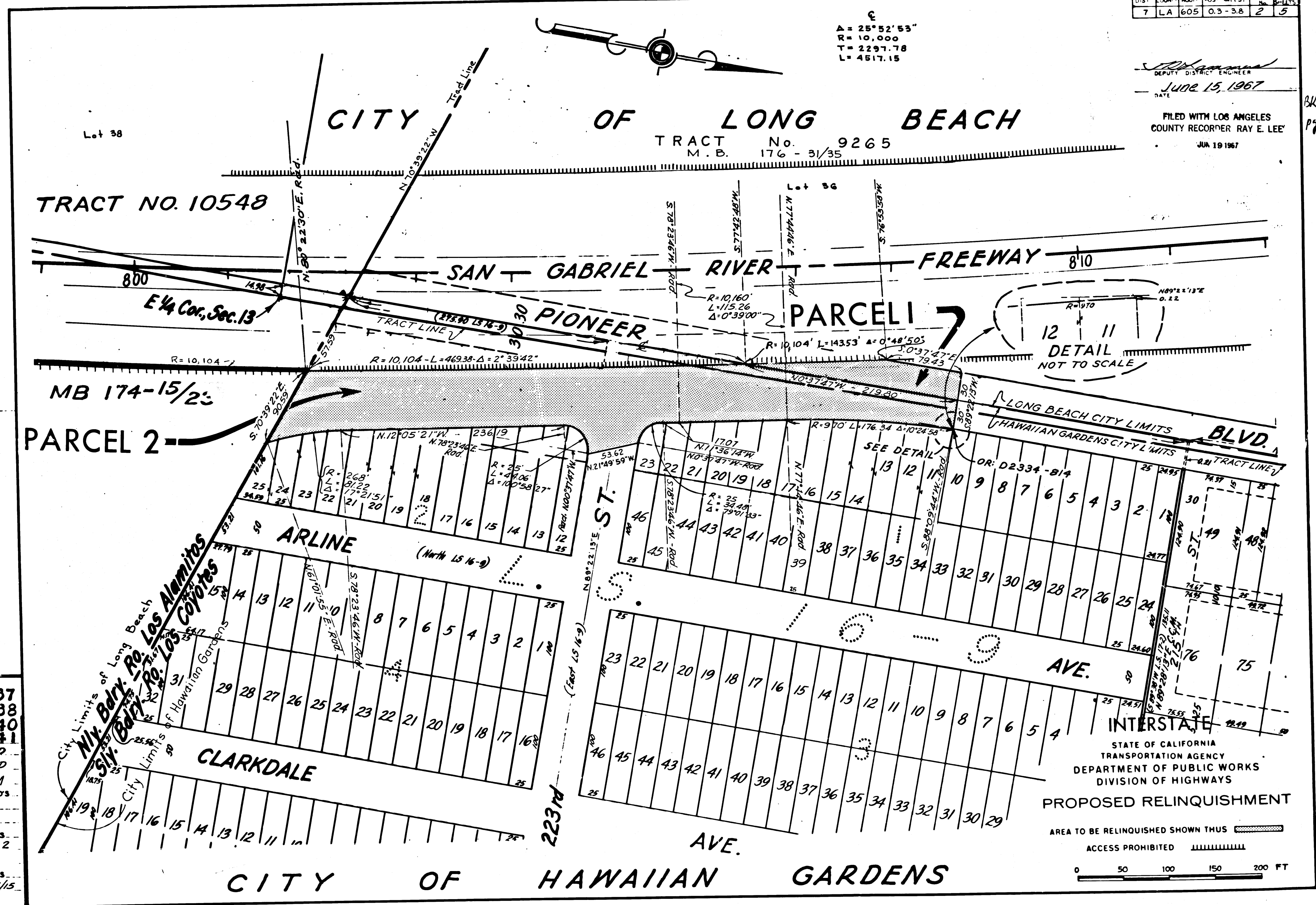
DIST	COUNTY	ROUTE	POST MILES	SHEET No.	TOTAL SHEETS
7	LA	605	0.3-3.8	2	5

$\Delta = 25^{\circ}52'53''$
 $R = 10,000$
 $T = 2297.78$
 $L = 4517.15$

DEPUTY DISTRICT ENGINEER
 JUNE 15, 1967
 DATE

FILED WITH LOS ANGELES COUNTY RECORDER RAY E. LEE
 JUN 19 1967

BKS
P294



REL-537
 538
 540
 541
 ORN BY RSD
 C/LC BY RSD
 CKD BY MM
 BASE MAP NOS
 F1956
 REF. MAP NOS
 CCM 209.2
 AS BUILT NOS
 163-12-14/15

ST.	NO.	ROUTE	POST. M. I. S.	SHEET	TOTAL SHEETS
7	LA	605	0.3-3.8	3	5

J. R. ...
 DEPUTY DISTRICT ENGINEER
 DATE: June 15, 1967
 FILED WITH LOS ANGELES
 COUNTY RECORDER, RAY E. LEE
 JUN 19 1967

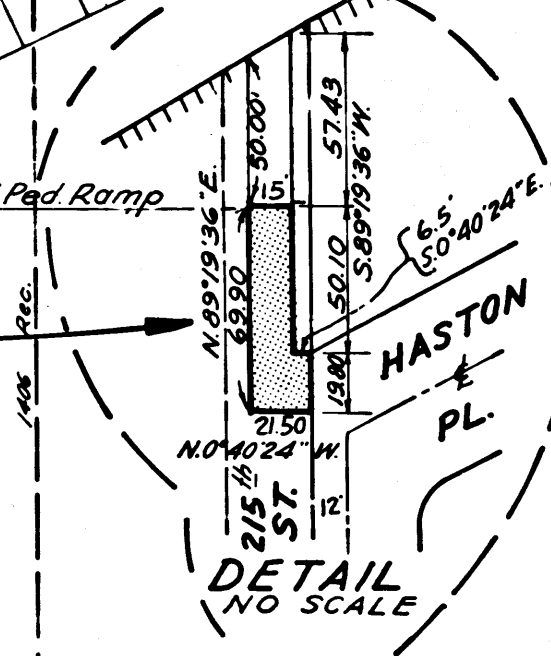
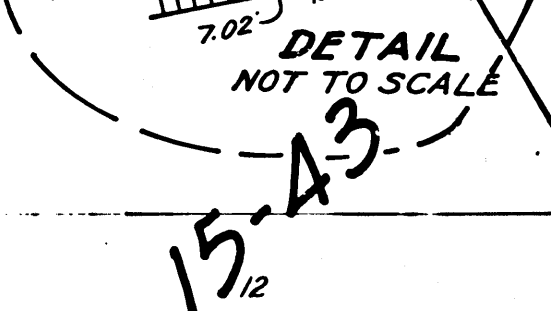
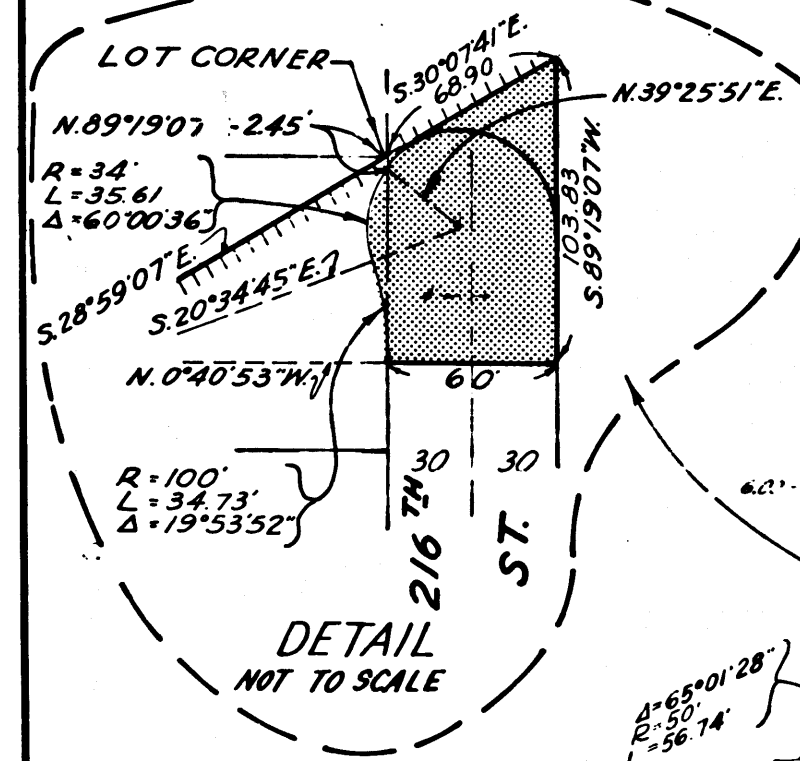
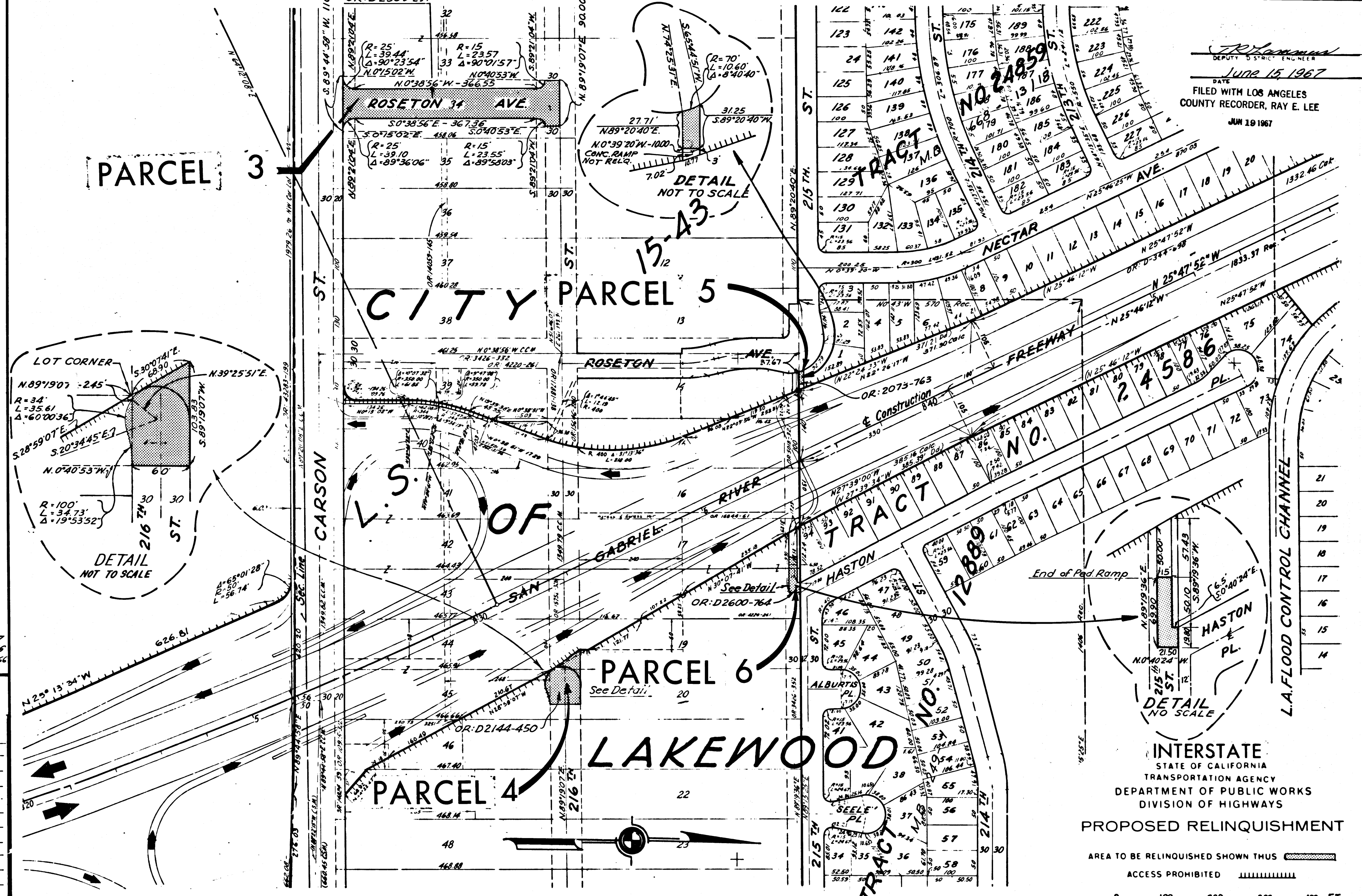
PARCEL 3

CITY PARCEL 5

PARCEL 6

PARCEL 4

LAKEWOOD



Revised 4-21-67
 REVISED 8-30-66
 REVISED 7-25-66
 REVISED 7-12-66
REL-537
538
540
541
 DRN BY RSD
 C.L.C. BY RSD
 CRD BY MM
 BASE MAP NOS.
F1956
 REF. MAP NOS.
CCM 208.2
 AS BUILT NO'S
163-12-22

INTERSTATE
 STATE OF CALIFORNIA
 TRANSPORTATION AGENCY
 DEPARTMENT OF PUBLIC WORKS
 DIVISION OF HIGHWAYS
PROPOSED RELINQUISHMENT
 AREA TO BE RELINQUISHED SHOWN THUS

 ACCESS PROHIBITED

 0 100 200 300 400 FT.

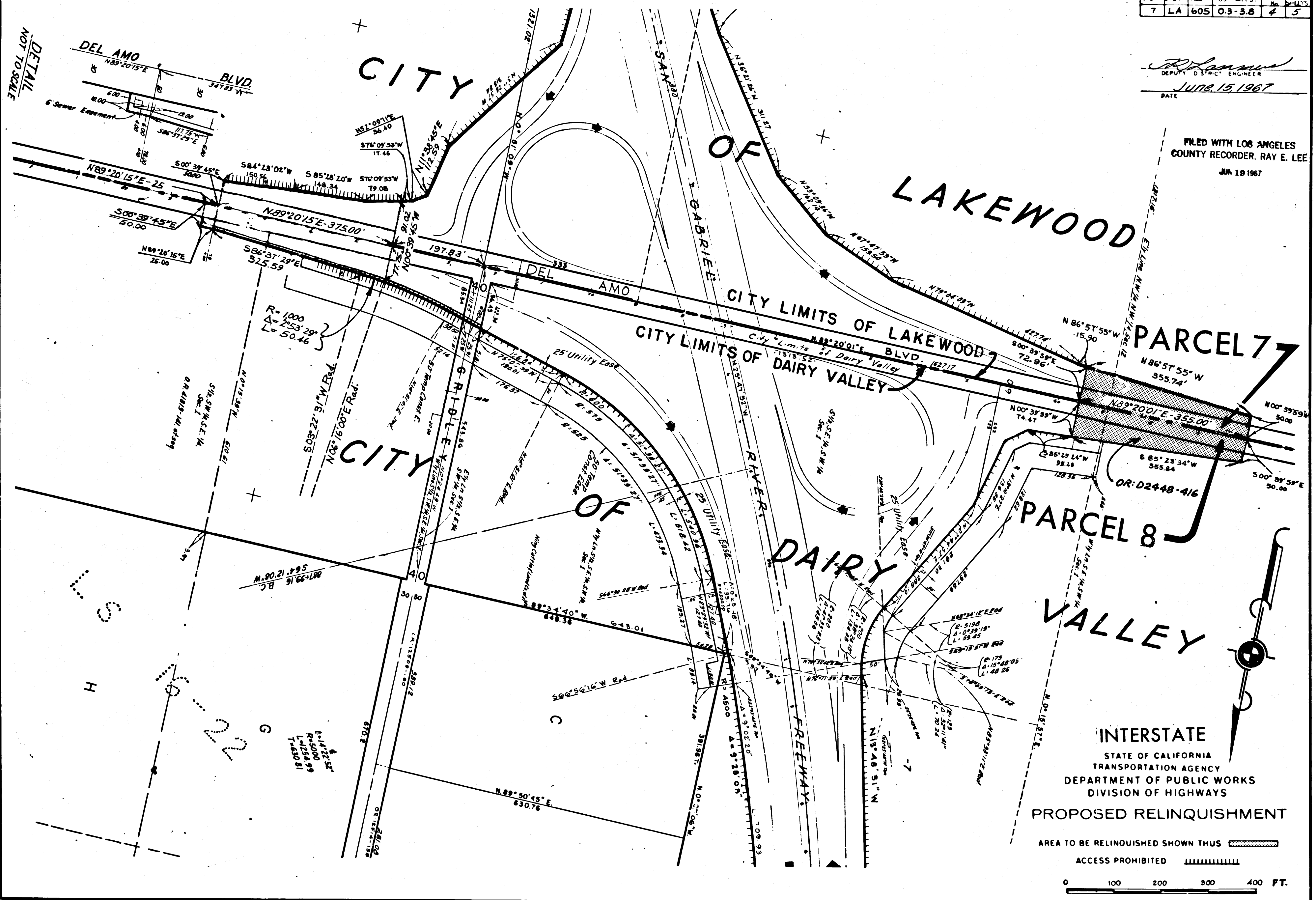
8K
5
P4
95

7	LA	605	0.3-3.8	4	5
---	----	-----	---------	---	---

W. L. ...
 DEPUTY DISTRICT ENGINEER
 DATE JUNE 15, 1967

FILED WITH LOS ANGELES COUNTY RECORDER, RAY E. LEE
 JUN 19 1967

DETAIL
 NOT TO SCALE



Revised 4-21-67
 REVISED 7-12-66

REL-537
 538
 540
 541

DRN BY JRG
 C'LC BY RSD
 CK'D BY MM
 BASE MAP NOS
 F 1957

REF. MAP NOS
 CCM 208.1

AS BUILT NOS
 163-12-26

INTERSTATE
 STATE OF CALIFORNIA
 TRANSPORTATION AGENCY
 DEPARTMENT OF PUBLIC WORKS
 DIVISION OF HIGHWAYS
 PROPOSED RELINQUISHMENT

AREA TO BE RELINQUISHED SHOWN THUS ACCESS PROHIBITED
 0 100 200 300 400 FT.

