

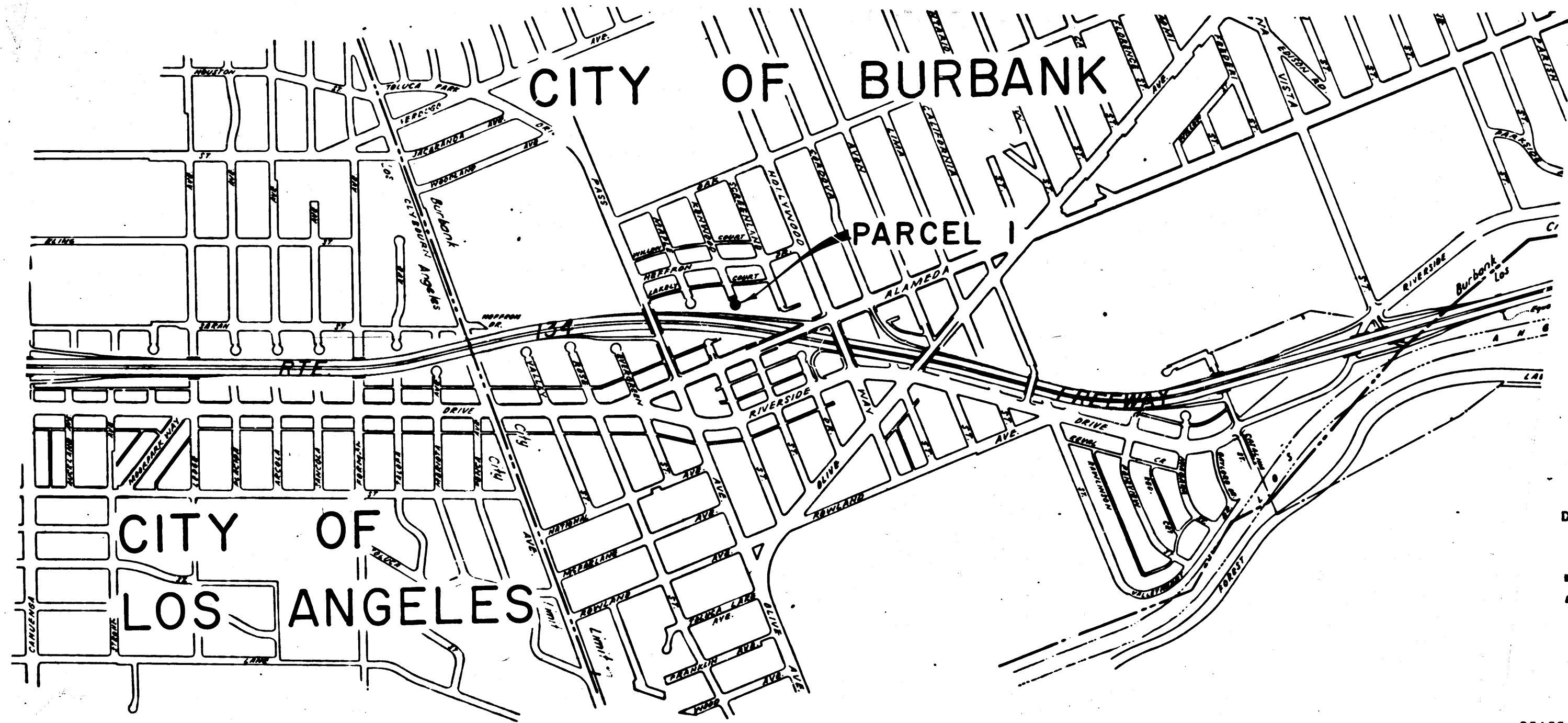
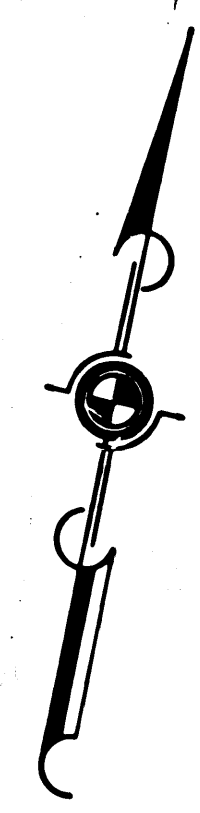
DIST	COUNTY	ROUTE	POST MILES	SHEET NO	TOTAL SHEETS
7	LA	134	1.9	1	2

STATE OF CALIFORNIA
 TRANSPORTATION AGENCY
 DEPARTMENT OF PUBLIC WORKS
 DIVISION OF HIGHWAYS

Anthony
 DEPUTY DISTRICT ENGINEER
 August 3, 1967
 DATE

RIGHT OF WAY MAPS OF
STATE HIGHWAY

In the City of Burbank at Kenwood Street



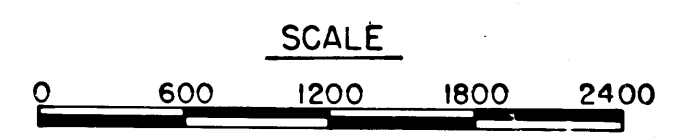
5/4/60
 228

REL-625
 DRN BY L.R.A.
 C'LC BY M.M.
 CK'D BY E.J.P.
 BASE MAP NO'S -
 F-2200
 REF. MAP NO'S
 AS BUILT NO'S

2936

RECORDED
 AT REQUEST OF
 DEPT. OF PUBLIC WORKS
 AUG. 7, 1967
 2:28 P.M.
 IN BOOK 5
 AT PAGE 99
 OF STATE HIGHWAY MAPS
 LOS ANGELES COUNTY, CALIF.
 RAY E. LEE
 COUNTY RECORDER
Ray E. Lee
 Deputy

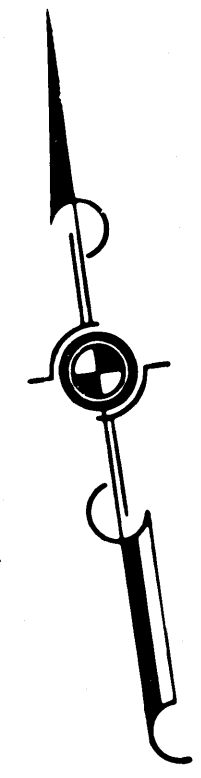
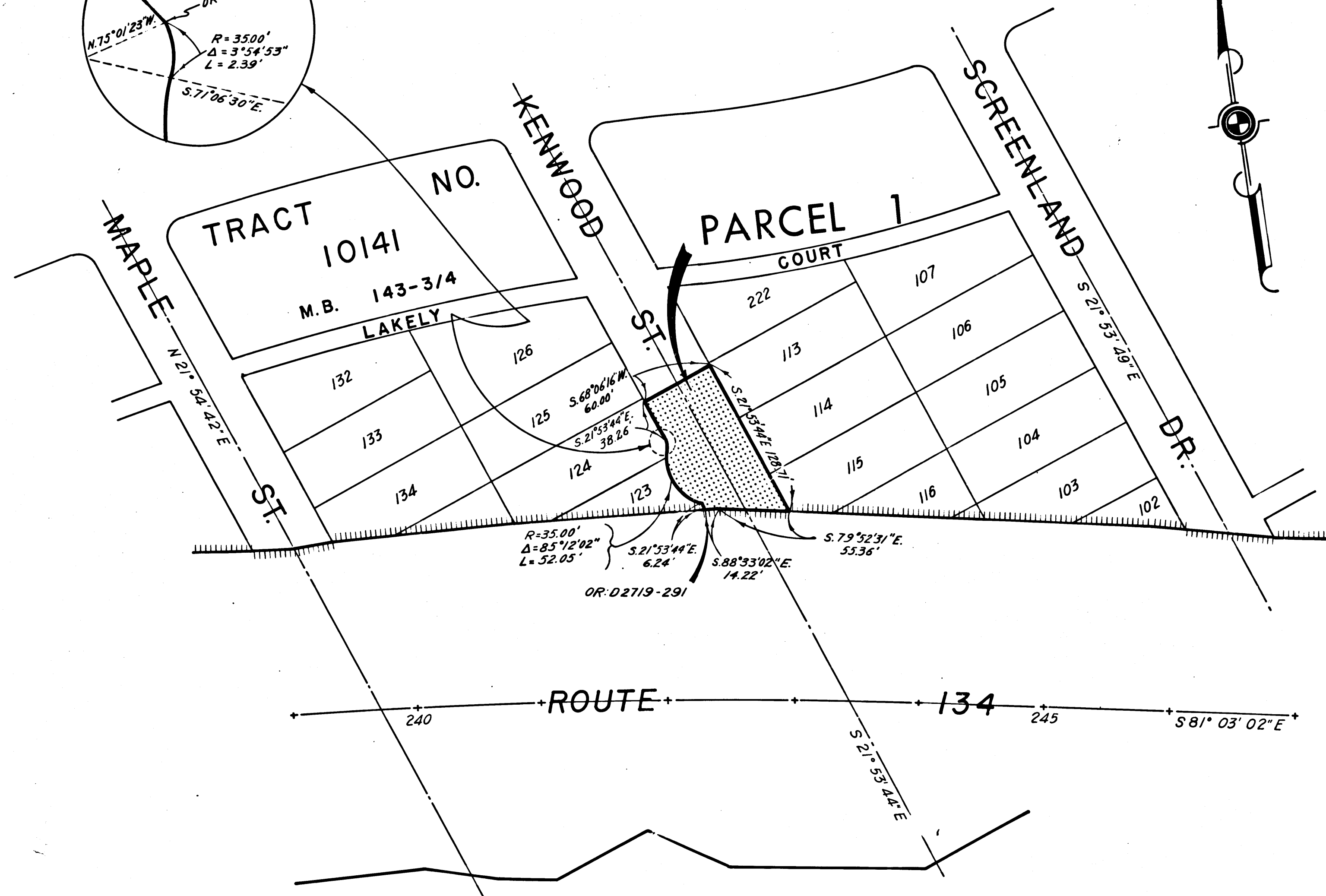
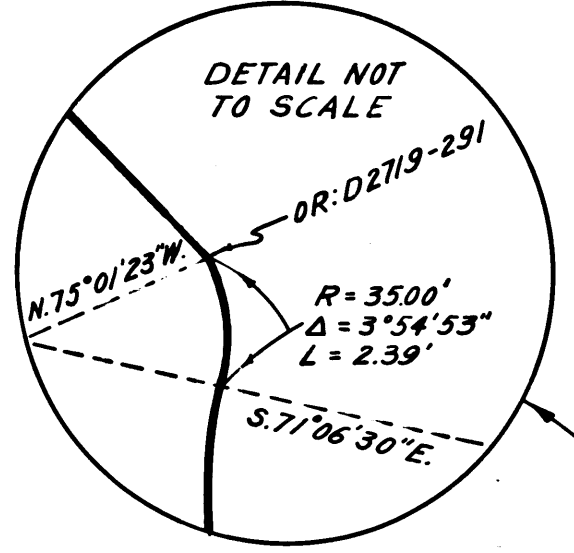
STATE OF CALIFORNIA
 TRANSPORTATION AGENCY
 DEPARTMENT OF PUBLIC WORKS
 DIVISION OF HIGHWAYS
PROPOSED RELINQUISHMENT



FILED WITH LOS ANGELES
COUNTY RECORDER, RAY E. LEE
AUG 7 1967

DIST.	COUNTY	ROUTE	POST MILES	SHEET NO.	TOTAL SHEETS
7	LA	134	1.9	2	2

Anthony
DEPUTY DISTRICT ENGINEER
August 3, 1967
DATE



REL-625
DRN BY L.R.A.
C/LC BY M.M.
CHK'D BY E.J.P.
BASE MAP NOS
F-2200
REF. MAP NOS
AS BUILT NOS

CITY OF BURBANK

STATE OF CALIFORNIA
TRANSPORTATION AGENCY
DEPARTMENT OF PUBLIC WORKS
DIVISION OF HIGHWAYS
PROPOSED RELINQUISHMENT
AREA TO BE RELINQUISHED SHOWN THUS [shaded box]
ACCESS PROHIBITED [dashed line]
0 50 100 150 200