

DIST	COUNTY	ROUTE	POST MILES	SHEET NO.	TOTAL SHEETS
7	LA	91	10.6/10.8	1	2

STATE OF CALIFORNIA
 TRANSPORTATION AGENCY
 DEPARTMENT OF PUBLIC WORKS
 DIVISION OF HIGHWAYS

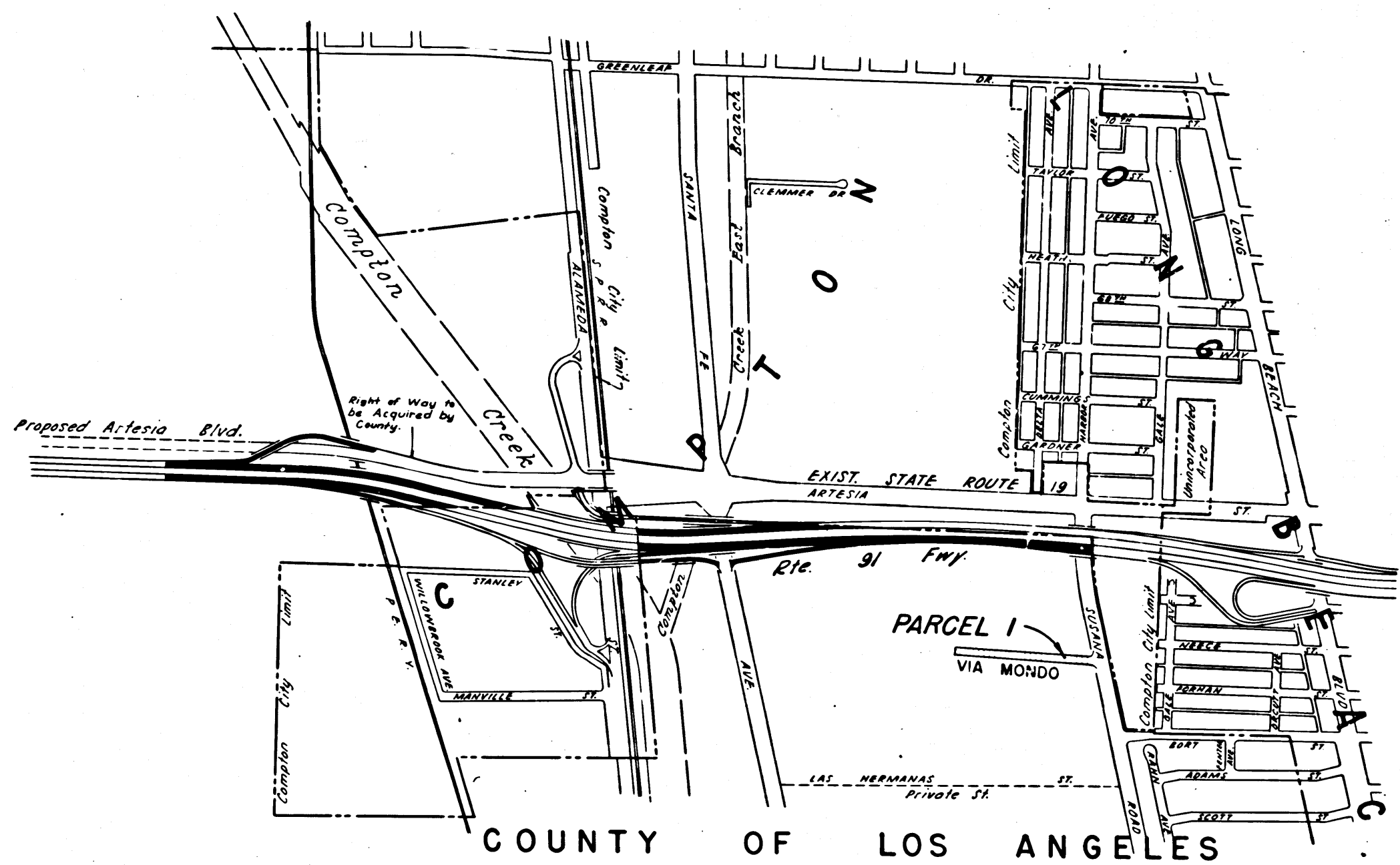
RIGHT OF WAY MAPS OF
STATE HIGHWAY
 IN LOS ANGELES COUNTY AT SUSANA ROAD

Autby
 DEPUTY DISTRICT ENGINEER
 DEC. 16, 1966
 DATE

4031

RECORDED
 AT REQUEST OF
 DEPT. OF PUBLIC WORKS
 DEC. 20, 1966
 30 MIN. PAST 12 P.M.

IN BOOK 5
 AT PAGE 20
 OF STATE HIGHWAY MAPS
 LOS ANGELES COUNTY, CALIF.
 RAY E. LEE
 COUNTY RECORDER
 BY *[Signature]* FREE



COUNTY OF LOS ANGELES

SCALE



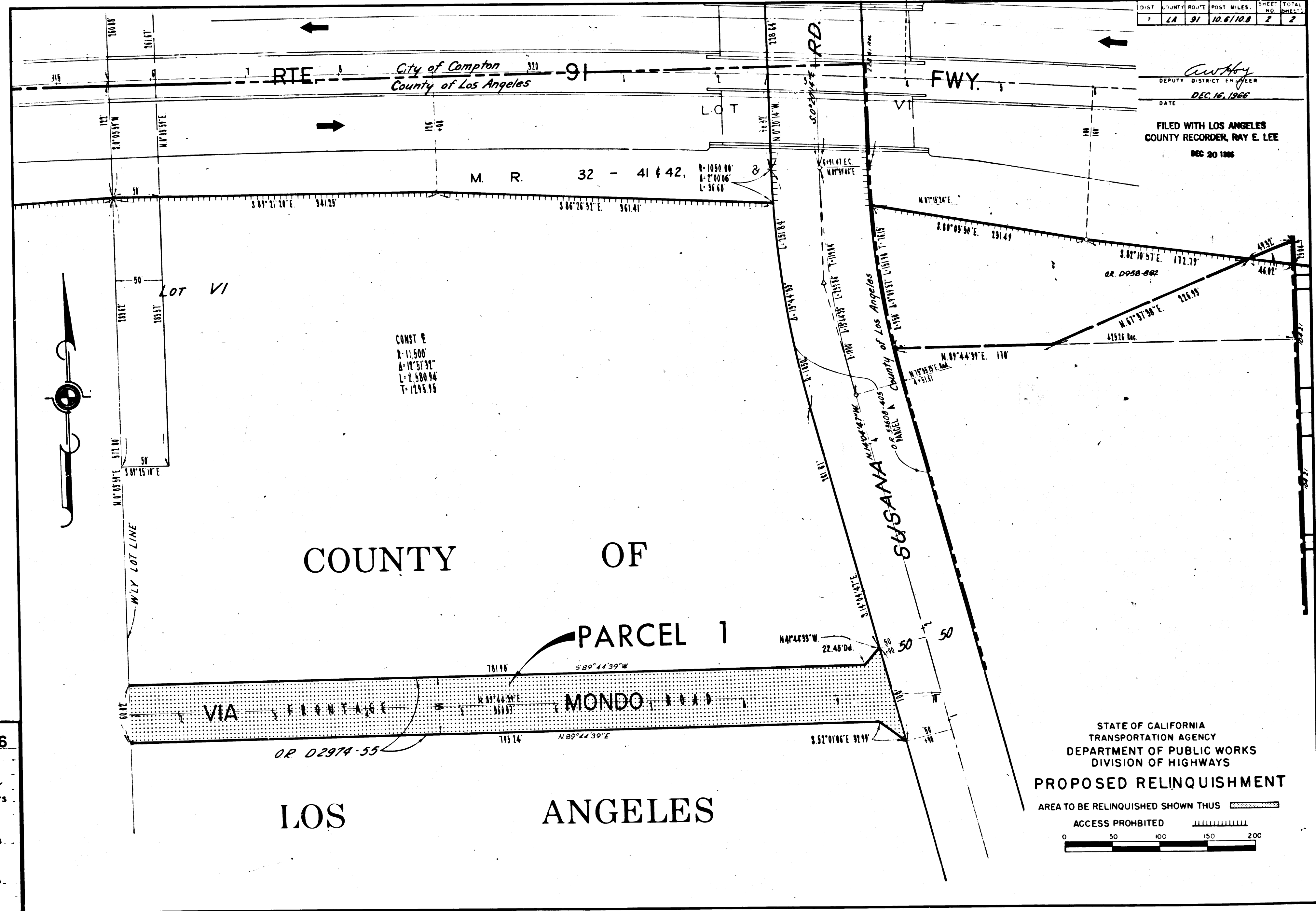
REL-576
 DRN BY ECH
 C'LC BY MM
 CK'D BY GDM
 BASE MAP NO'S
 E-1091
 REF. MAP NO'S
 AS BUILT NO'S

STATE OF CALIFORNIA
 TRANSPORTATION AGENCY
 DEPARTMENT OF PUBLIC WORKS
 DIVISION OF HIGHWAYS
PROPOSED RELINQUISHMENT
 AREA TO BE RELINQUISHED SHOWN THUS

DIST	COUNTY	ROUTE	POST MILES	SHEET NO.	TOTAL SHEETS
1	LA	91	10.6/10.8	2	2

Anthony
DEPUTY DISTRICT ENGINEER
DATE DEC. 16, 1966

FILED WITH LOS ANGELES
COUNTY RECORDER, RAY E. LEE
DEC 20 1966



CONST E
R=11,500'
A=12°51'32"
L=7,580.94'
T=1295.95'

COUNTY OF

PARCEL 1

VIA FRONTAGE MONDO ROAD

OR D2974-55

LOS ANGELES

STATE OF CALIFORNIA
TRANSPORTATION AGENCY
DEPARTMENT OF PUBLIC WORKS
DIVISION OF HIGHWAYS
PROPOSED RELINQUISHMENT
AREA TO BE RELINQUISHED SHOWN THUS [stippled pattern]
ACCESS PROHIBITED [dashed line pattern]

REL-576
DRN BY ECH
C/LC BY M.M
CK'D BY G.D.W
BASE MAP NO'S
E-1091
REF. MAP NO'S
AS BUILT NO'S