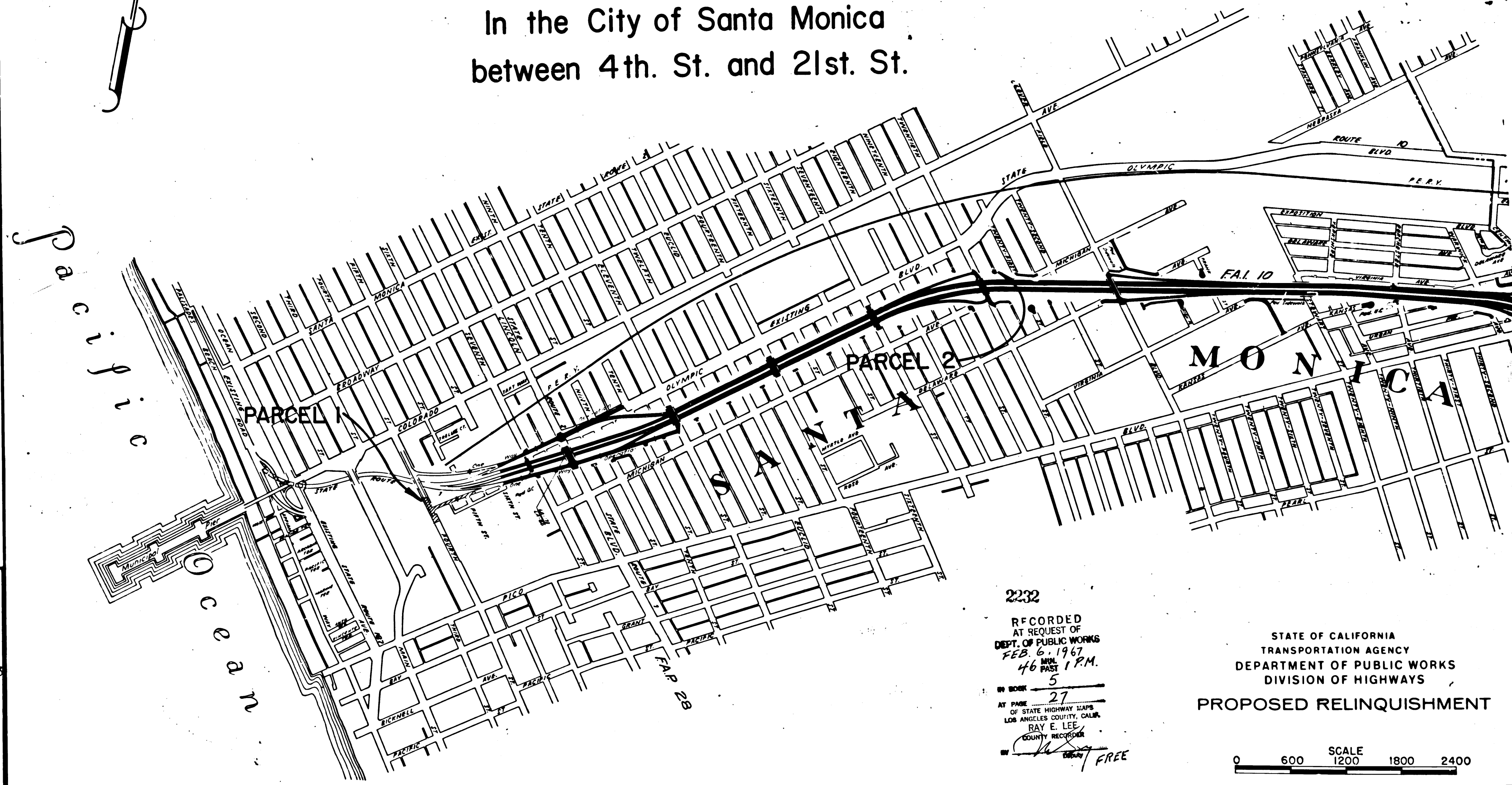
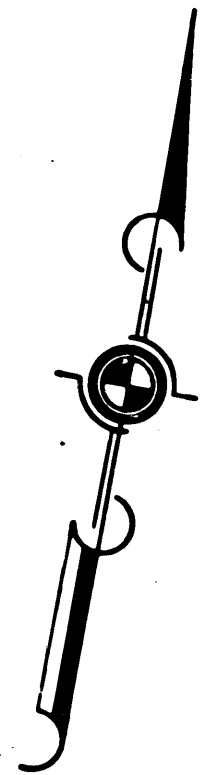


DIST	COUNTY	ROUTE	POST MILES	SHEET NO.	TOTAL SHEETS
7	LA	10	2.1/3.1	1	3
			1	34.6/34.9	

Anthony
 DEPUTY DISTRICT ENGINEER
 Feb. 1, 1967
 DATE

STATE OF CALIFORNIA
 TRANSPORTATION AGENCY
 DEPARTMENT OF PUBLIC WORKS
 DIVISION OF HIGHWAYS

RIGHT OF WAY MAPS OF
STATE HIGHWAY
 In the City of Santa Monica
 between 4th. St. and 21st. St.



5/27-29

REL-577
 DRN BY M.C.
 C.L.C BY M.M.
 CK'D BY G.D.W.
 BASE MAP NO'S
 F-2061, F-2063
 REF. MAP NO'S
 AS BUILT NO'S

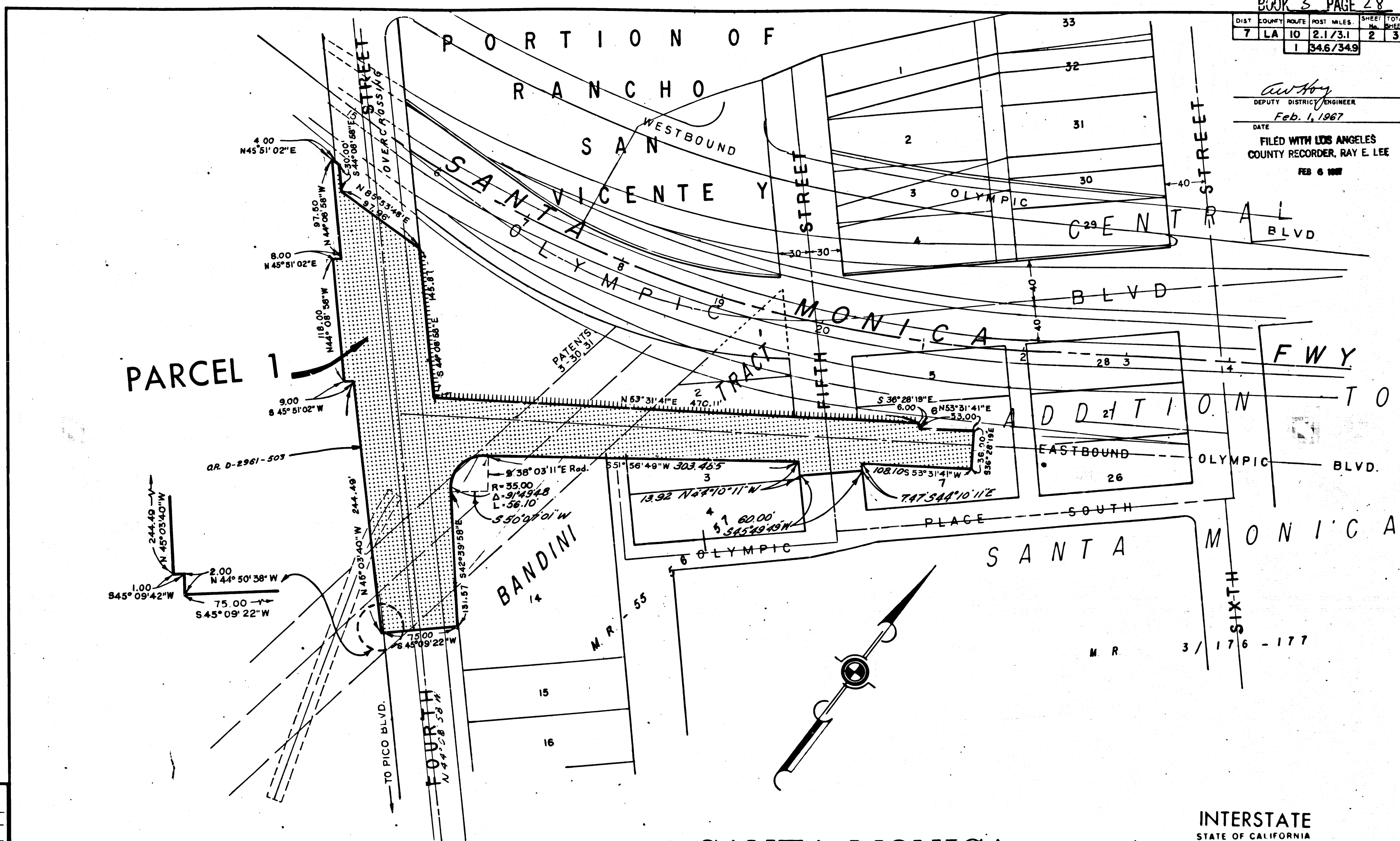
2232
 RECORDED
 AT REQUEST OF
 DEPT. OF PUBLIC WORKS
 FEB. 6, 1967
 46 MAIL
 1 P.M.
 5
 AT PAGE 27
 OF STATE HIGHWAY MAPS
 LOS ANGELES COUNTY, CALIF.
 RAY E. LEE
 COUNTY RECORDER
 FREE

STATE OF CALIFORNIA
 TRANSPORTATION AGENCY
 DEPARTMENT OF PUBLIC WORKS
 DIVISION OF HIGHWAYS
PROPOSED RELINQUISHMENT



DIST	COUNTY	ROUTE	POST MILES	SHEET No.	TOTAL SHEETS
7	LA	10	2.1/3.1	2	3
				1	346/349

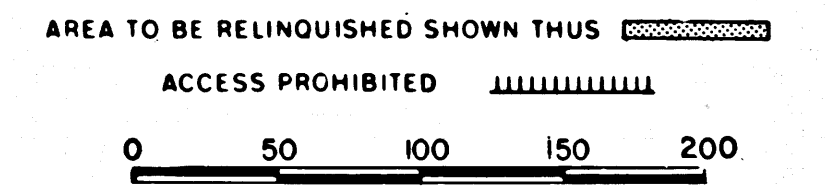
Anthony
 DEPUTY DISTRICT ENGINEER
 Feb. 1, 1967
 DATE
 FILED WITH LOS ANGELES
 COUNTY RECORDER, RAY E. LEE
 FEB 6 1967



REL-577
 DRN BY M.C.
 C'LC BY M.M.
 CK'D BY G.D.W.
 BASE MAP NO'S
 F-2061, F-2063
 REF. MAP NO'S
 AS BUILT NO'S

CITY OF SANTA MONICA

INTERSTATE
 STATE OF CALIFORNIA
 TRANSPORTATION AGENCY
 DEPARTMENT OF PUBLIC WORKS
 DIVISION OF HIGHWAYS
 PROPOSED RELINQUISHMENT



DIST	COUNTY	ROUTE	POST MILES	SHEET NO.	TOTAL SHEETS
7	LA	10	2.1/3.1	3	3
			1	34.6/34.9	

C. W. Hoy

DEPUTY DISTRICT ENGINEER

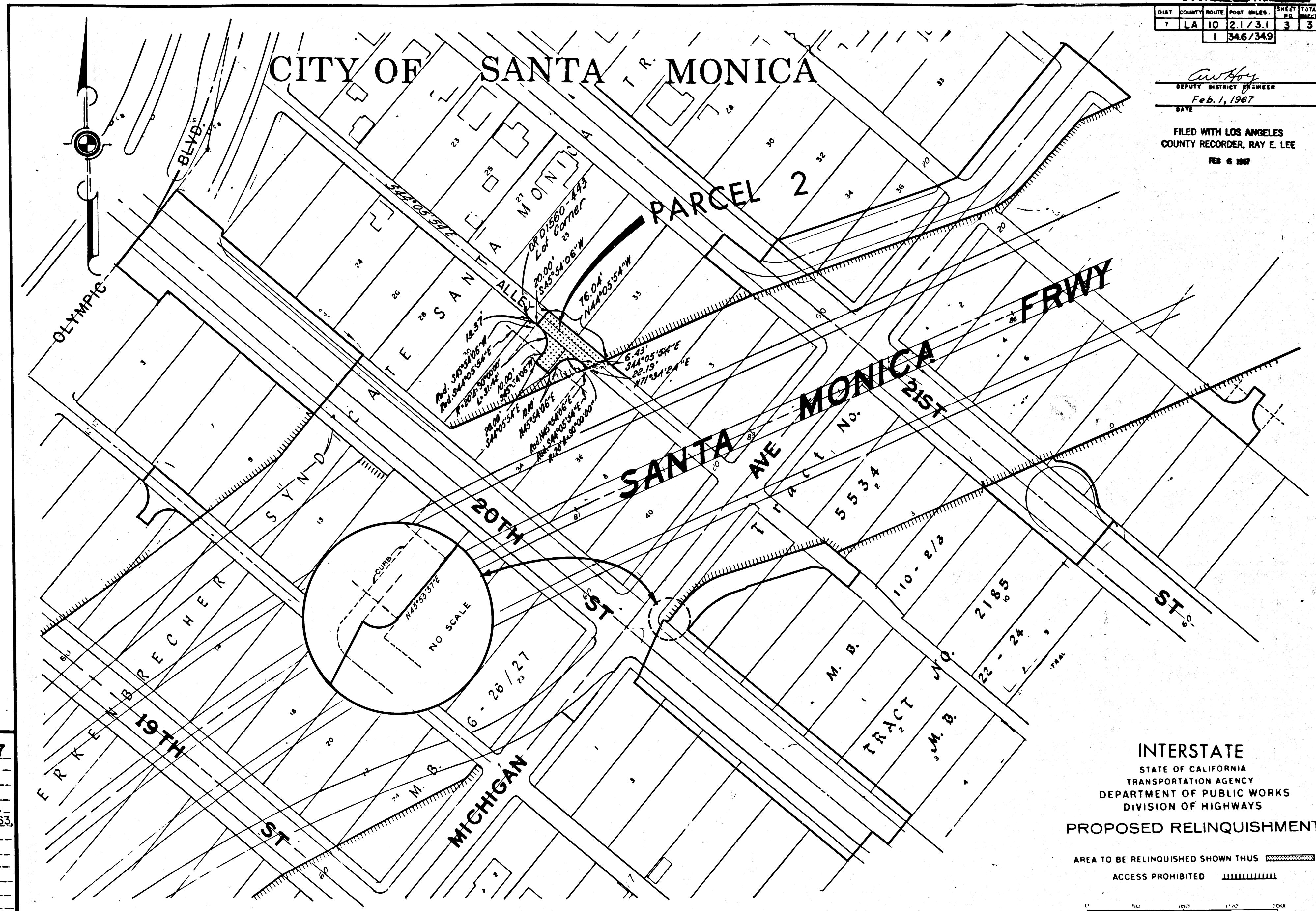
Feb. 1, 1967

DATE

FILED WITH LOS ANGELES COUNTY RECORDER, RAY E. LEE

FEB 6 1967

CITY OF SANTA MONICA



REL-577

DRN BY M.C.

CLC BY M.M.

CK'D BY G.D.W.

BASE MAP NO'S

F-2061, F-2063

REF MAP NO'S

AS BUILT NO'S

INTERSTATE

STATE OF CALIFORNIA
TRANSPORTATION AGENCY
DEPARTMENT OF PUBLIC WORKS
DIVISION OF HIGHWAYS

PROPOSED RELINQUISHMENT

AREA TO BE RELINQUISHED SHOWN THUS

ACCESS PROHIBITED

