

DIST	COUNTY	ROUTE	POST MILES	SHEET NO.	TOTAL SHEETS
7	LA	60	86/11.0	1	4

STATE OF CALIFORNIA  
 TRANSPORTATION AGENCY  
 DEPARTMENT OF PUBLIC WORKS  
 DIVISION OF HIGHWAYS  
 RIGHT OF WAY MAPS OF  
**STATE HIGHWAY**

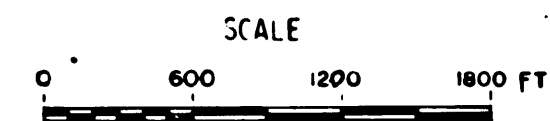
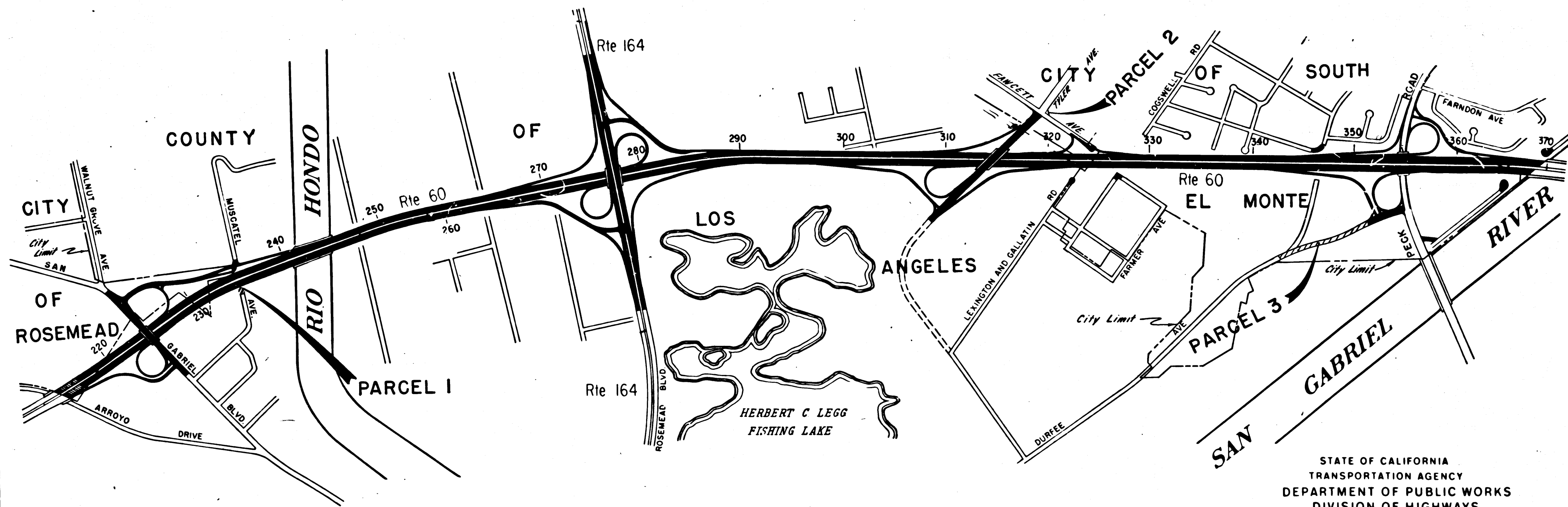
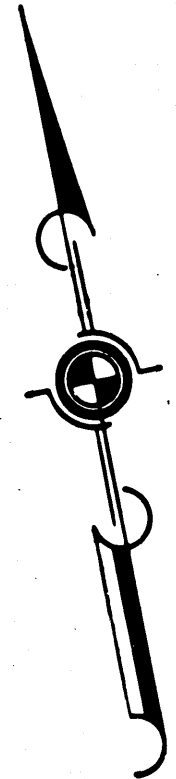
*Anthony*  
 DEPUTY DISTRICT ENGINEER  
 Feb. 10, 1967  
 DATE

BETWEEN SAN GABRIEL BLVD. O.C.  
 AND PECK ROAD U.C.

3068

RECORDED  
 AT REQUEST OF  
 DEPT. OF PUBLIC WORKS  
 FEB 15, 1967  
 8 MIN.  
 PAST 4 P.M.

IN BOOK 5  
 PAGE 37  
 OF STATE HIGHWAY MAPS  
 LOS ANGELES COUNTY, CALIF.  
 RAY E. LEE  
 COUNTY RECORDER  
 BY *Anthony* Deputy  
 FREE



STATE OF CALIFORNIA  
 TRANSPORTATION AGENCY  
 DEPARTMENT OF PUBLIC WORKS  
 DIVISION OF HIGHWAYS  
**PROPOSED RELINQUISHMENT**

408  
 5/37

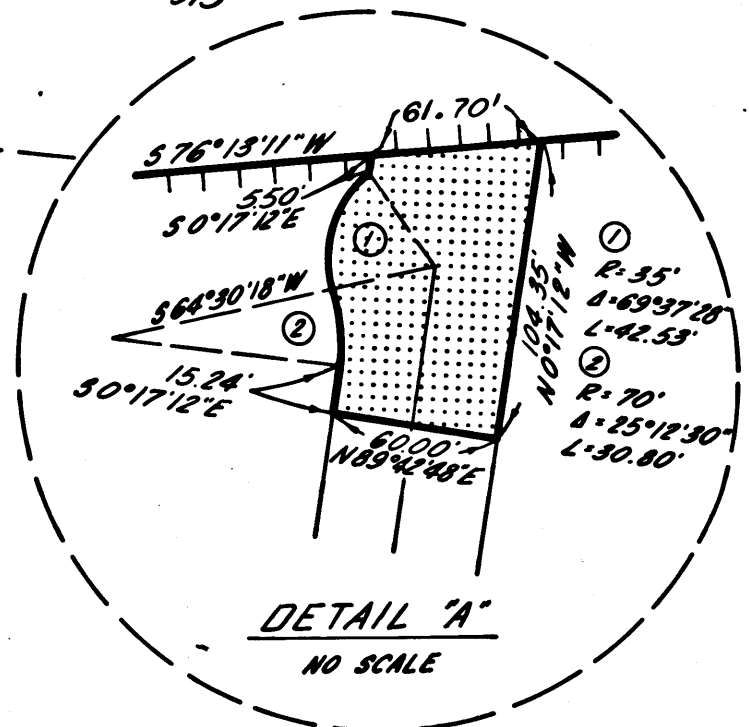
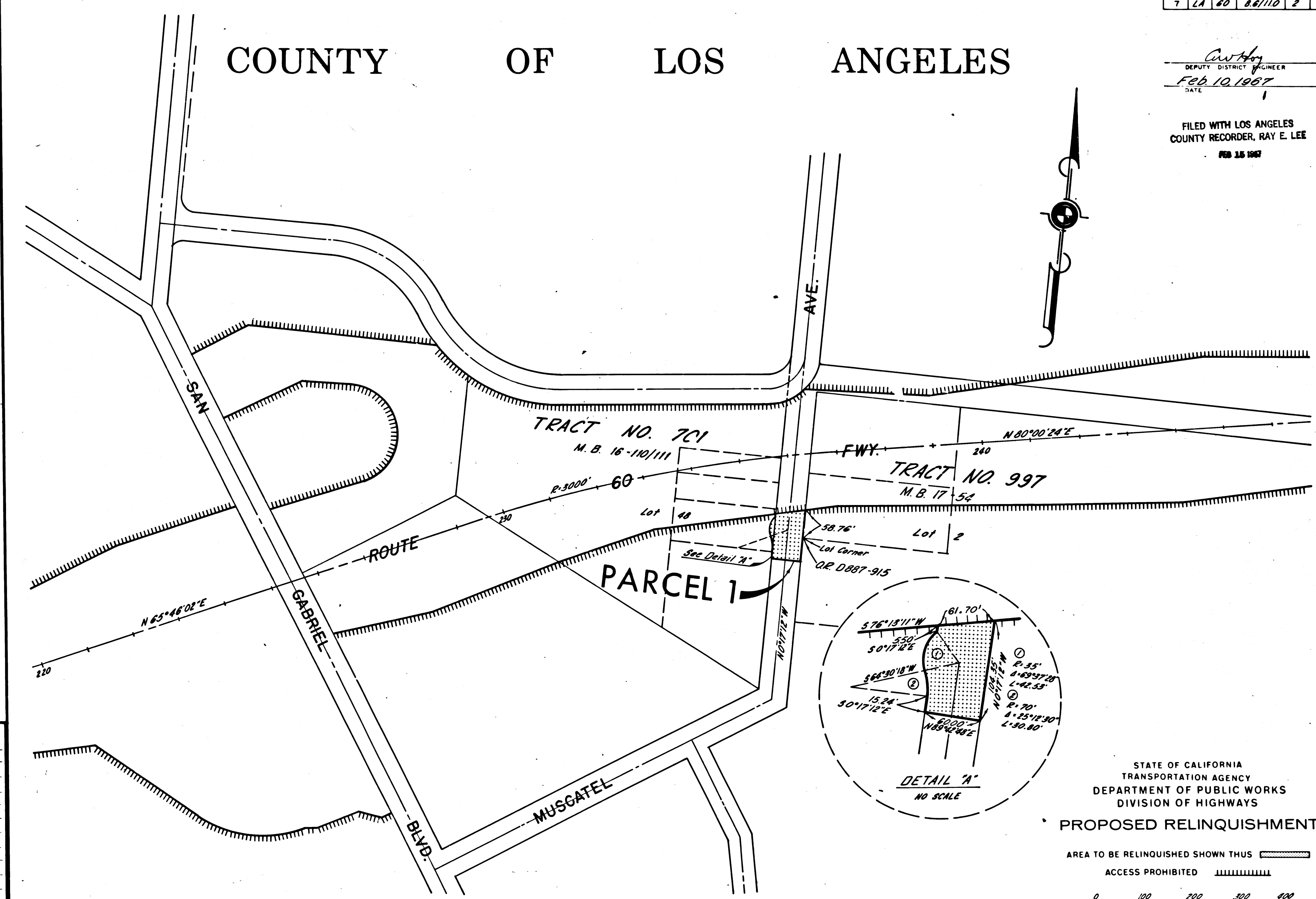
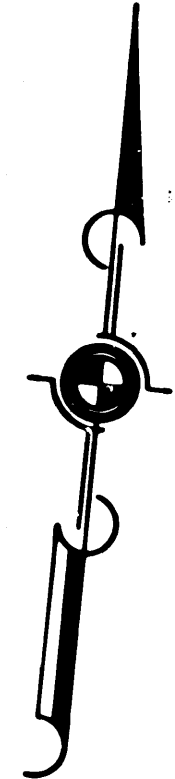
Rev. 1-16-67  
**REL-547**  
**REL-580**  
 DWTN BY G.S.  
 C.L.C. BY E.P.  
 C.K'D BY G.D.W.  
 BASE MAP NO'S  
 E-1786 &  
 E-1787  
 REF. MAP NO'S  
 C.C.M. 2171 &  
 C.C.M. 2172  
 AS BUILT NO'S  
 163-15

CITY	COUNTY	ROUTE	POST MILES	SHEET NO.	TOTAL SHEETS
7	LA	60	8.6/110	2	4

# COUNTY OF LOS ANGELES

*Curt Hoy*  
 DEPUTY DISTRICT ENGINEER  
 Feb. 10, 1967  
 DATE

FILED WITH LOS ANGELES  
 COUNTY RECORDER, RAY E. LEE  
 FEB 15 1967



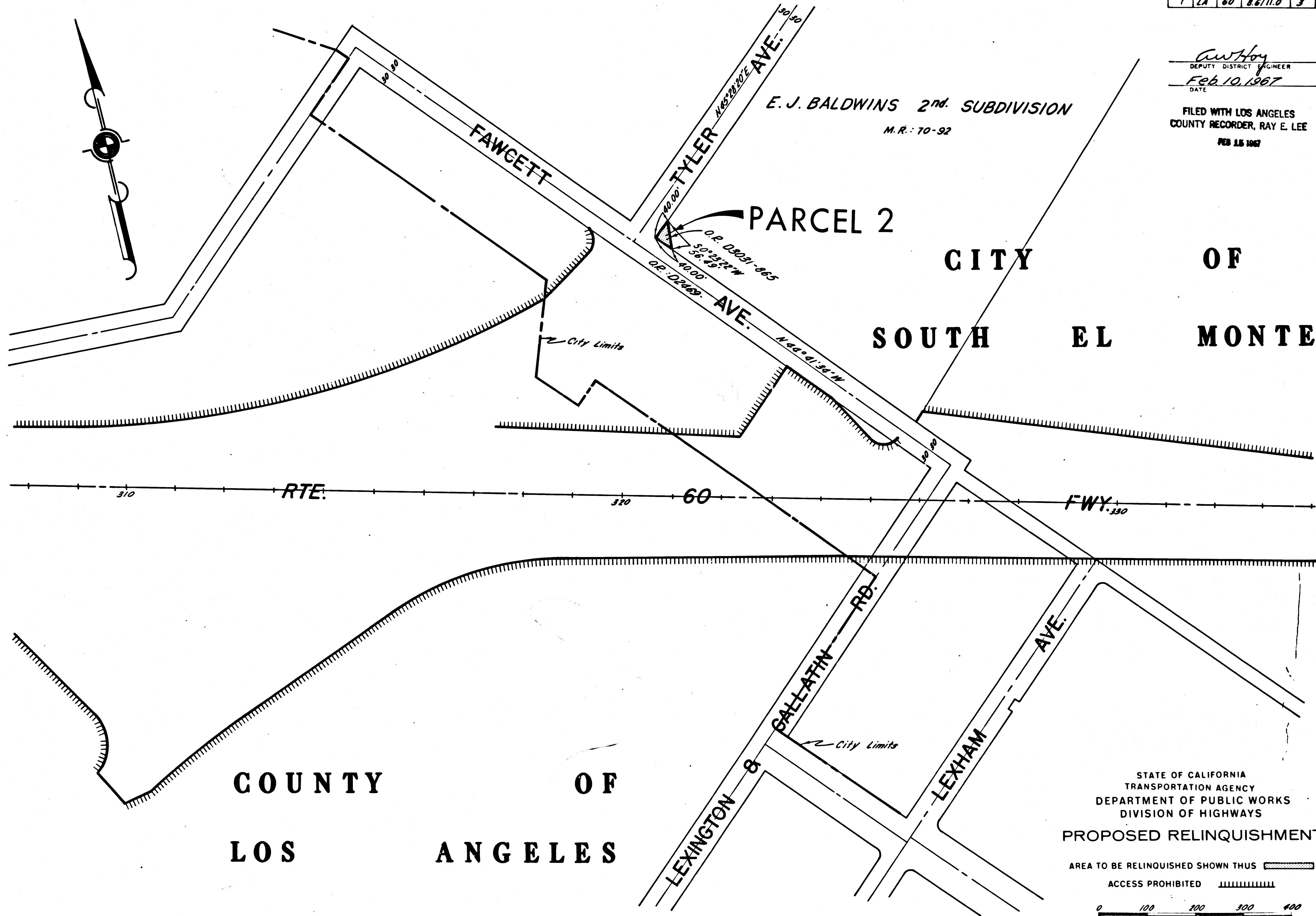
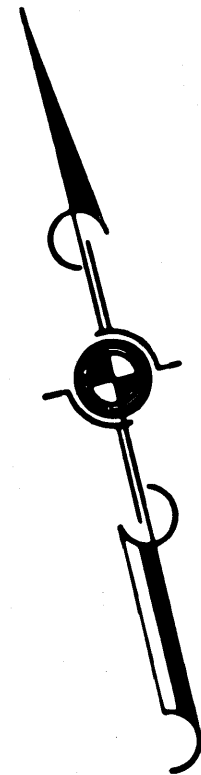
547  
 REL-580  
 DWTN BY E.E.H.  
 C.L.C. BY E.P.  
 CK'D BY S.L.T.  
 BASE MAP NOS.  
 F-1786  
 REF. MAP NOS.  
 CCM 217.1 &  
 217.2  
 AS BUILT NO'S  
 163-15

STATE OF CALIFORNIA  
 TRANSPORTATION AGENCY  
 DEPARTMENT OF PUBLIC WORKS  
 DIVISION OF HIGHWAYS  
**PROPOSED RELINQUISHMENT**  
 AREA TO BE RELINQUISHED SHOWN THUS   
 ACCESS PROHIBITED

DIST	COUNTY	ROUTE	POST MILES	SHEET No.	TOTAL SHEETS
7	LA	60	8.6/11.0	3	4

*Anthony*  
 DEPUTY DISTRICT ENGINEER  
 DATE Feb 10, 1967

FILED WITH LOS ANGELES  
 COUNTY RECORDER, RAY E. LEE  
 FEB 15 1967



547  
 REL-580  
 DWTN BY E.E.H.  
 C/LC BY E.P.  
 CK'D BY S.L.T.  
 BASE MAP NO'S  
 E-1787

REF. MAP NO'S  
 CCM 217.1  
 217.2

AS BUILT NO'S  
 169.15

STATE OF CALIFORNIA  
 TRANSPORTATION AGENCY  
 DEPARTMENT OF PUBLIC WORKS  
 DIVISION OF HIGHWAYS

**PROPOSED RELINQUISHMENT**

AREA TO BE RELINQUISHED SHOWN THUS

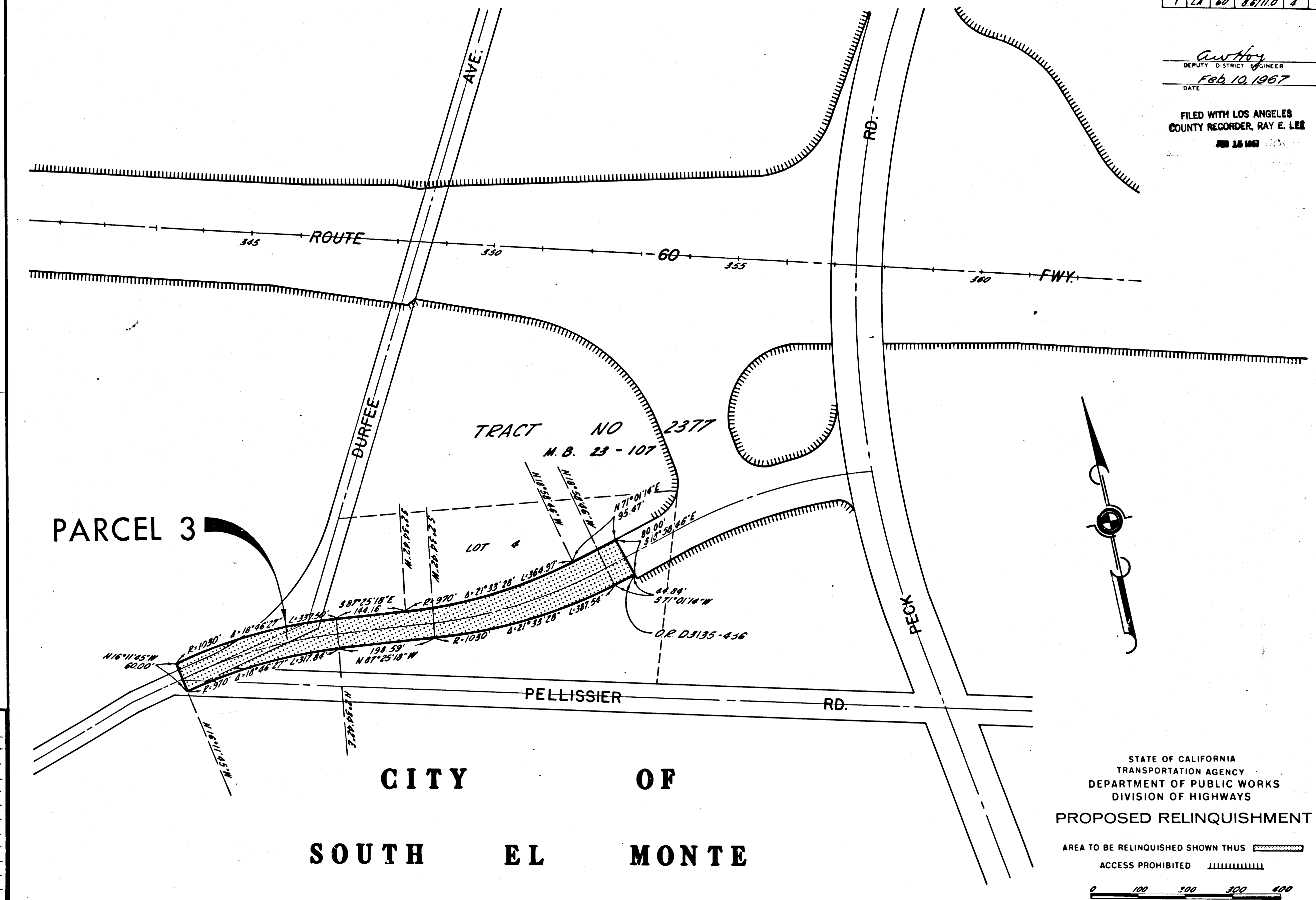
ACCESS PROHIBITED

0 100 200 300 400

DIST.	COUNTY	ROUTE	POST MILES.	SHEET No.	TOTAL SHEETS
7	LA	60	8.8/11.0	4	4

*Anthony*  
 DEPUTY DISTRICT ENGINEER  
 DATE Feb. 10, 1967

FILED WITH LOS ANGELES  
 COUNTY RECORDER, RAY E. LEE  
 FEB 25 1967



PARCEL 3

TRACT NO 2377  
 M.B. 23 - 107

LOT 4

CITY OF  
 SOUTH EL MONTE

STATE OF CALIFORNIA  
 TRANSPORTATION AGENCY  
 DEPARTMENT OF PUBLIC WORKS  
 DIVISION OF HIGHWAYS  
 PROPOSED RELINQUISHMENT

AREA TO BE RELINQUISHED SHOWN THUS   
 ACCESS PROHIBITED 



547  
 REL-580  
 DRN BY EEH  
 C.L.C. BY EP  
 CK'D BY SLT  
 BASE MAP NO'S  
 E-1787  
 REF. MAP NO'S  
 CCM 217.1 &  
 217.2  
 AS BUILT NO'S  
 163.15