

DIST	COUNTY	ROUTE	POST MILES	SHEET NO.	TOTAL SHEETS
7	LA	138	0.0/4.0	1	2

3939

STATE OF CALIFORNIA
 TRANSPORTATION AGENCY
 DEPARTMENT OF PUBLIC WORKS
 DIVISION OF HIGHWAYS

RECORDED
 AT REQUEST OF
 DEPT. OF PUBLIC WORKS
 MAY 19, 1967
 MIN. 4 P.M.
 10 PAST 4 P.M.

C. W. Hoby
 DEPUTY DISTRICT ENGINEER
 DATE *MAY 15, 1967*

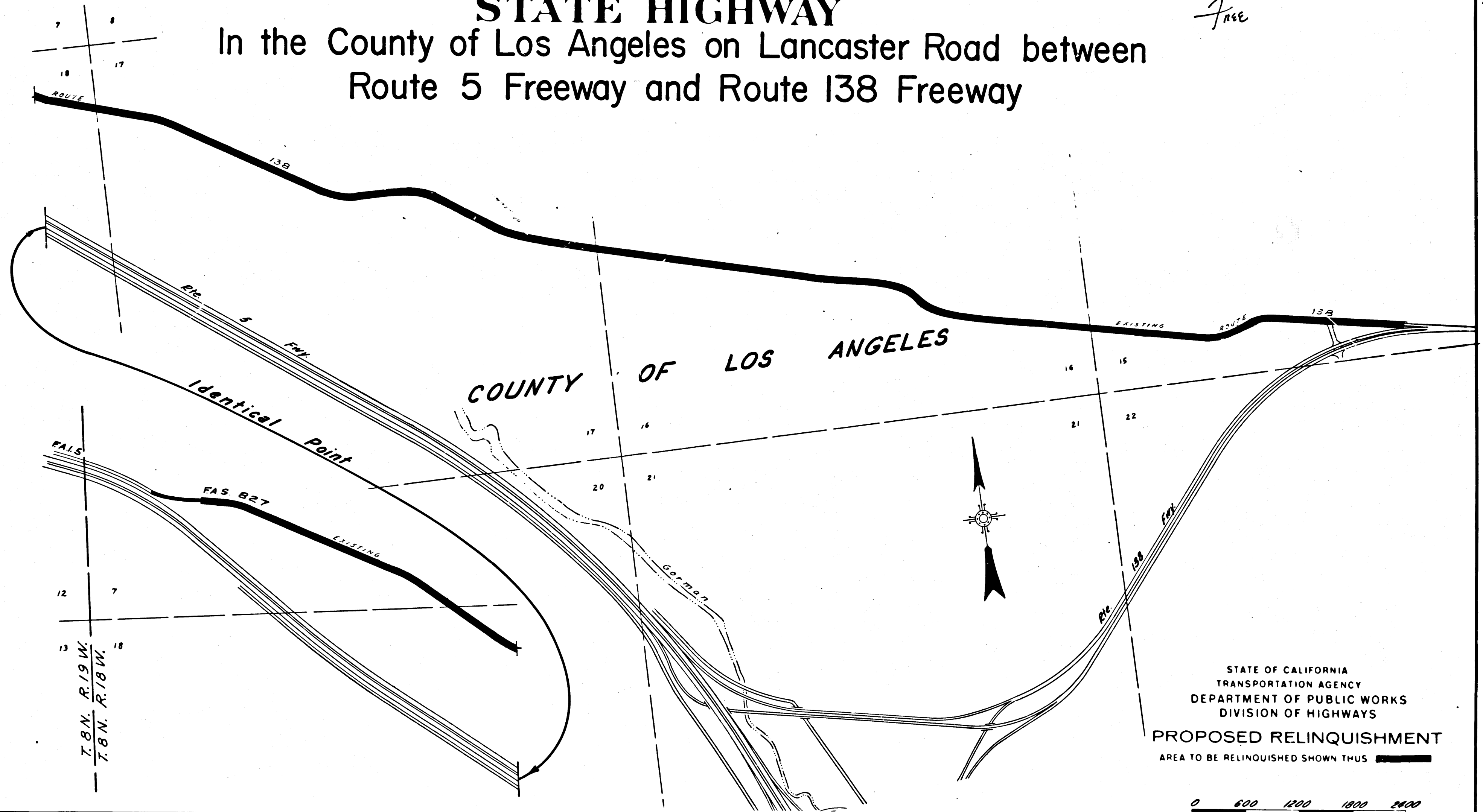
IN BOOK 5
 AT PAGE 81
 OF STATE HIGHWAY MAPS
 LOS ANGELES COUNTY, CALIF.
 RAY E. LEE
 COUNTY RECORDER
 BY *[Signature]*
 Deputy

Free

BK 5
pg 81
Free
4:10 PM

RIGHT OF WAY MAPS OF
STATE HIGHWAY

In the County of Los Angeles on Lancaster Road between
 Route 5 Freeway and Route 138 Freeway



STATE OF CALIFORNIA
 TRANSPORTATION AGENCY
 DEPARTMENT OF PUBLIC WORKS
 DIVISION OF HIGHWAYS
PROPOSED RELINQUISHMENT
 AREA TO BE RELINQUISHED SHOWN THUS

REL-616
 DRN BY *EEH*
 C/LC BY ...
 CKD BY *S. Le Roy T.*
 BASE MAP NO'S
F-1322
F-1455
 REF. MAP NO'S
 AS BUILT NO'S

T.8N. R.19W.
T.8N. R.18W.

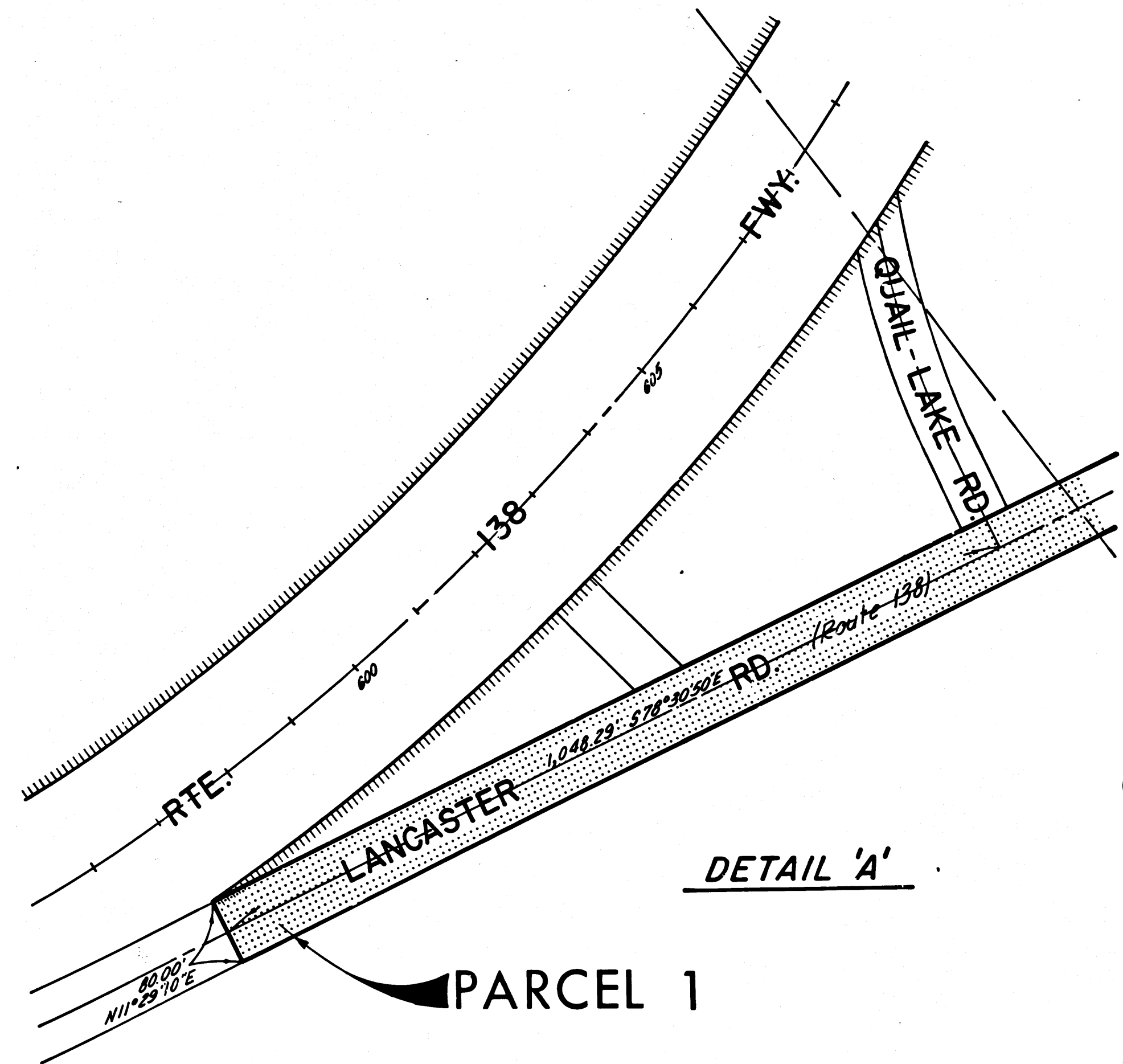
DIST.	COUNTY	ROUTE	POST M. I.S.	SHEET NO.	TOTAL SHEETS
7	LA	138	0.014.0	2	2

COUNTY OF LOS ANGELES

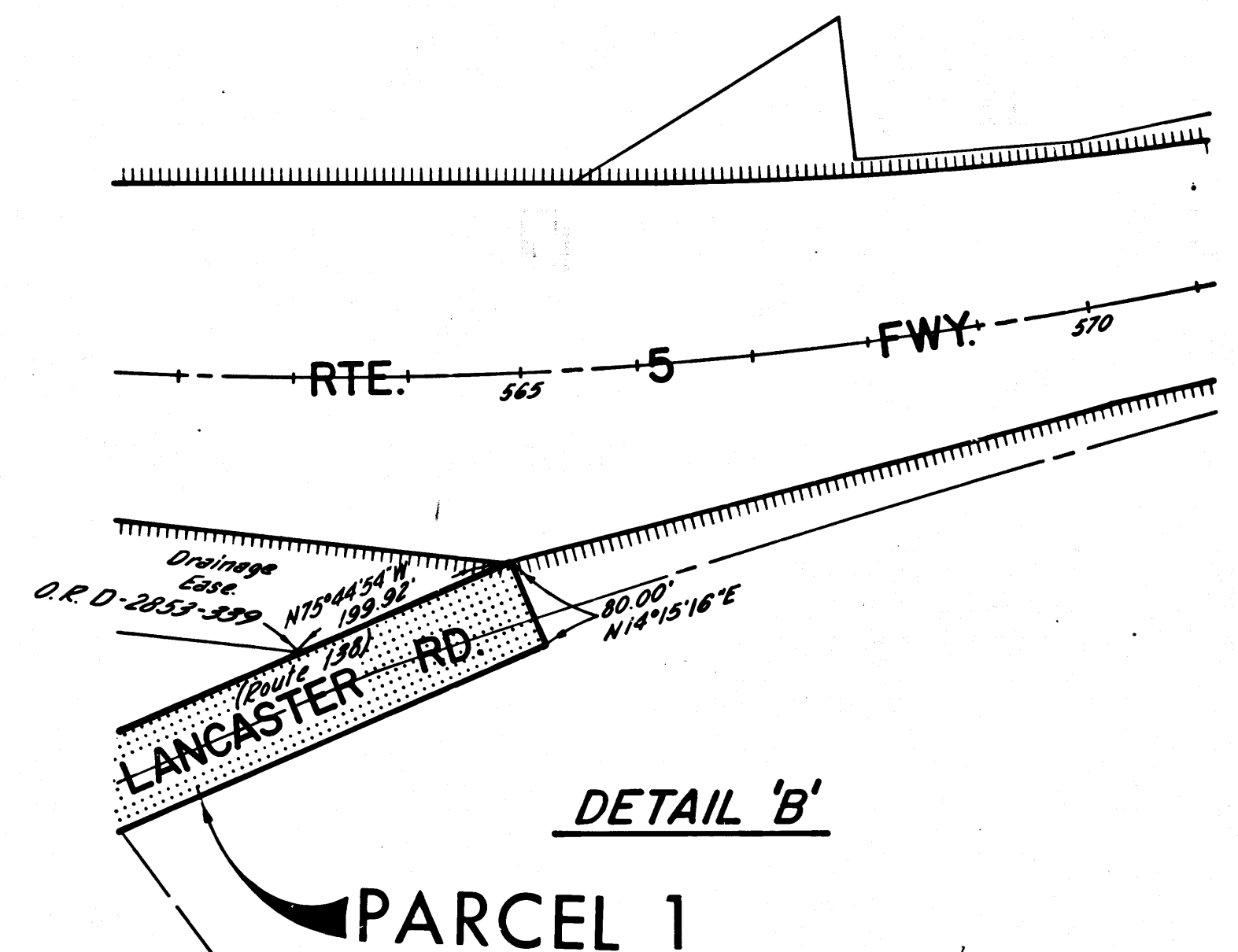
Anthony
 DEPUTY DISTRICT ENGINEER
 DATE *MAY 15, 1967*

FILED WITH LOS ANGELES
 COUNTY RECORDER, RAY E. LEE
 MAY 19 1967

*PK 5
 138*

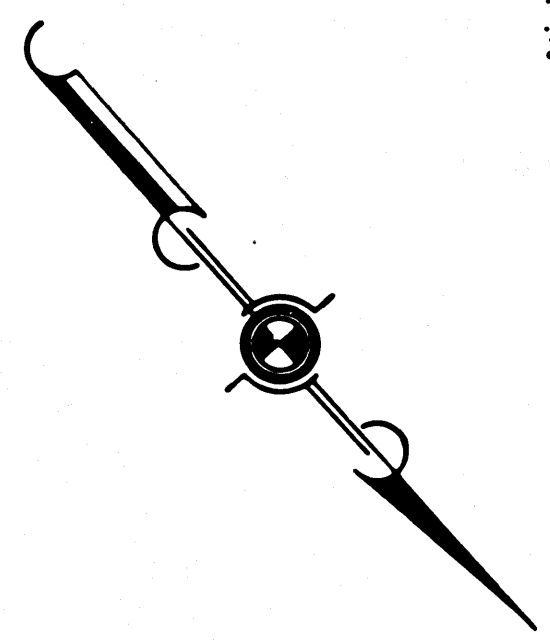


DETAIL 'A'





DETAIL 'B'

PARCEL 1



REL-616
 DWN BY *EEN*
 C'LC BY _____
 CK'D BY *S. Le Roy T.*
 BASE MAP NO'S _____
F-1322 &
F-1855
 REF. MAP NO'S _____
 AS BUILT NO'S _____

STATE OF CALIFORNIA
 TRANSPORTATION AGENCY
 DEPARTMENT OF PUBLIC WORKS
 DIVISION OF HIGHWAYS
PROPOSED RELINQUISHMENT

AREA TO BE RELINQUISHED SHOWN THUS 
 ACCESS PROHIBITED 
 0 100 200 300 400