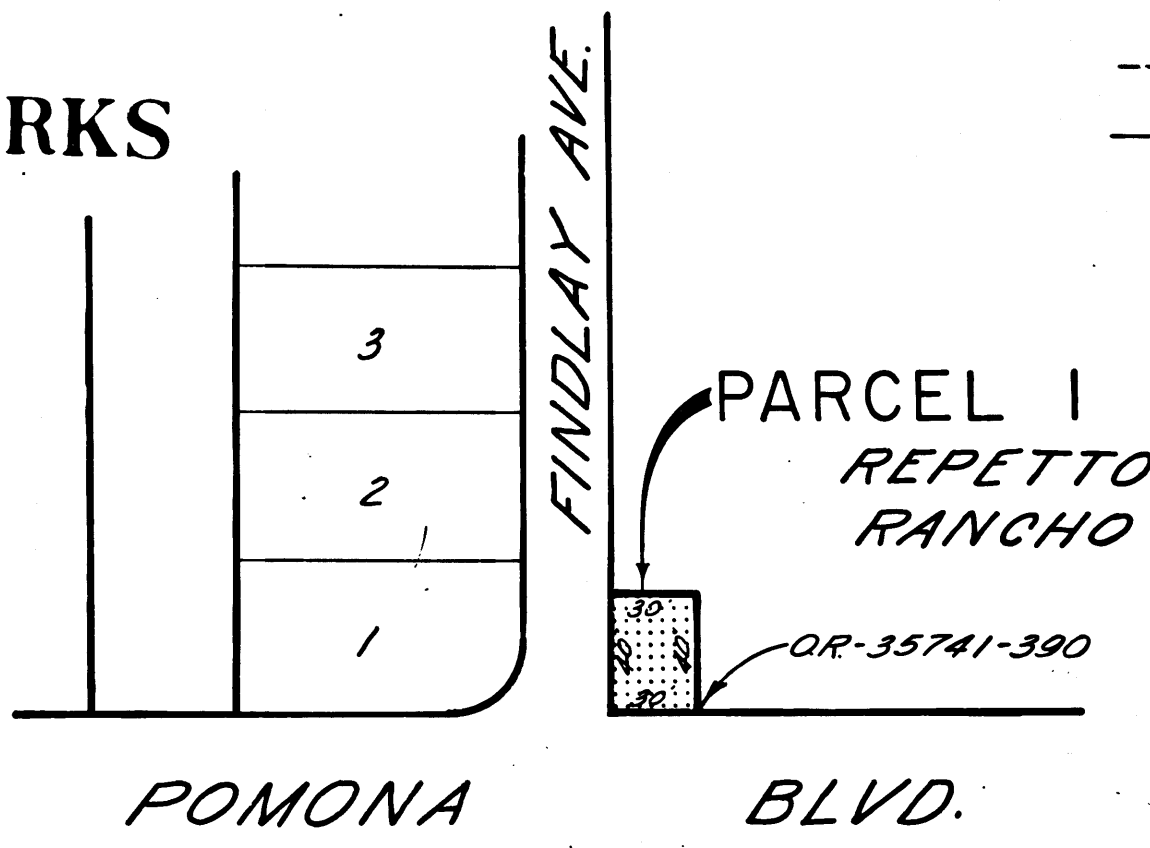


DIST	COUNTY	ROUTE	POST MILES	SHEET NO.	TOTAL SHEETS
7	LA	60	5.2	1	1

STATE OF CALIFORNIA  
 TRANSPORTATION AGENCY  
 DEPARTMENT OF PUBLIC WORKS  
 DIVISION OF HIGHWAYS

*Awshy*  
 DEPUTY DISTRICT ENGINEER  
 July 26, 1967  
 DATE

RIGHT OF WAY MAPS OF  
**STATE HIGHWAY**  
 In the City of Monterey Park  
 at Findlay Ave.



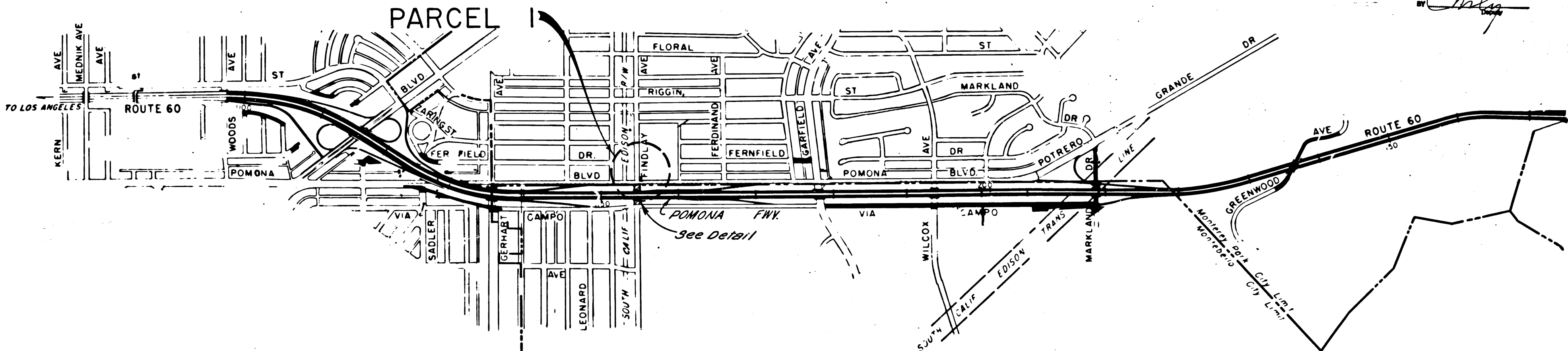
DETAIL  
 NO SCALE

2608

RECORDED  
 AT REQUEST OF  
 DEPT. OF PUBLIC WORKS  
 JULY 31, 1967  
 47 PAST 10 AM.

IN BOOK 5  
 AT PAGE 98  
 OF STATE HIGHWAY MAPS  
 LOS ANGELES COUNTY, CALIF.  
 RAY E. LEE  
 COUNTY RECORDER  
*Free*

MONTEREY PARK

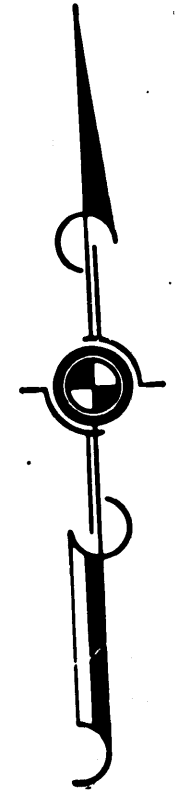
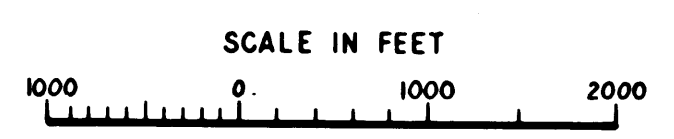


COUNTY OF  
**LOS ANGELES**

MONTEBELLO

STATE OF CALIFORNIA  
 TRANSPORTATION AGENCY  
 DEPARTMENT OF PUBLIC WORKS  
 DIVISION OF HIGHWAYS  
**PROPOSED RELINQUISHMENT**

AREA TO BE RELINQUISHED SHOWN THUS



REL-626  
 DRN BY M.A.C.  
 C/LC BY J.F.  
 CKD BY S.L.T.  
 BASE MAP NO'S  
 F1703  
 REF. MAP NO'S  
 C.C.M. 215.8  
 AS BUILT NO'S  
 185-8

9/74  
 1047