

| DIST | COUNTY | ROUTE | POST MILES. | LET NO. | TOTAL SHEETS |
|------|--------|-------|-------------|---------|--------------|
| 7 | LA | 5 | 2.4/5.1 | 1 | 7 |

3199

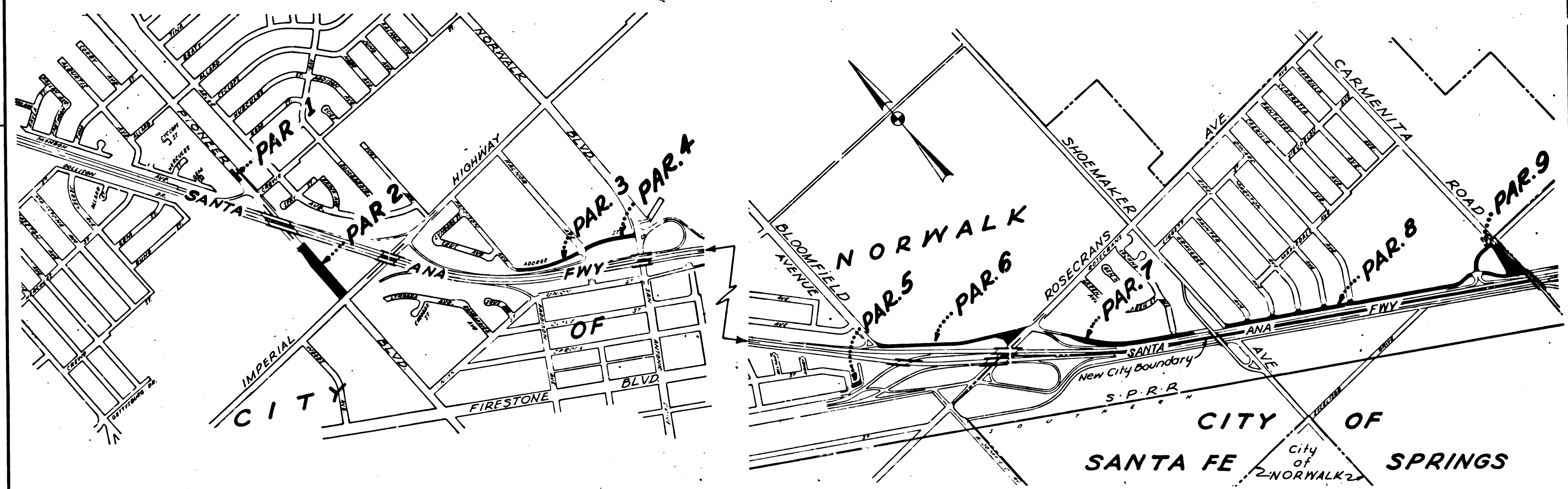
Ray E. Lee
 DEPUTY DISTRICT ENGINEER
 DATE *June 21, 1967*

STATE OF CALIFORNIA
 TRANSPORTATION AGENCY
 DEPARTMENT OF PUBLIC WORKS
 DIVISION OF HIGHWAYS

RIGHT OF WAY MAP OF
STATE HIGHWAY

In the City of Norwalk between
 Pioneer Blvd. and Carmenita Road

RECORDED
 AT REQUEST OF
 DEPT. OF PUBLIC WORKS
 JUNE 23, 1967
 4:45 P.M.
 IN BOOK 6
 AT PAGE 1
 OF STATE HIGHWAY MAPS
 LOS ANGELES COUNTY, CALIF.
 RAY E. LEE
 COUNTY RECORDER
Ray E. Lee
 Deputy
 FREE



REL-594
 DRN BY RSD
 C'LC BY RSD
 CND BY G.B.
 BASE MAP NO'S
 F1999, F2000
 F2001, F2002
 REF. MAP NO'S
 AS BUILT NO'S.
 118-10

INTERSTATE
 STATE OF CALIFORNIA
 TRANSPORTATION AGENCY
 DEPARTMENT OF PUBLIC WORKS
 DIVISION OF HIGHWAYS
 PROPOSED RELINQUISHMENT
 AREA TO BE RELINQUISHED SHOWN THUS ██████████

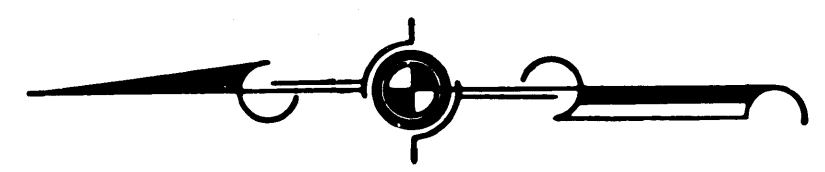


| DIST. | COUNTY | ROUTE | POST MILES | SHEET NO. | TOTAL SHEETS |
|-------|--------|-------|------------|-----------|--------------|
| 7 | LA | 5 | 24/5.1 | 2 | 7 |

FILED WITH LOS ANGELES
 COUNTY RECORDER, RAY E. LEE
 JUN 22 1967

C. W. H. G.
 DEPUTY DISTRICT ENGINEER
 DATE *June 21, 1967*

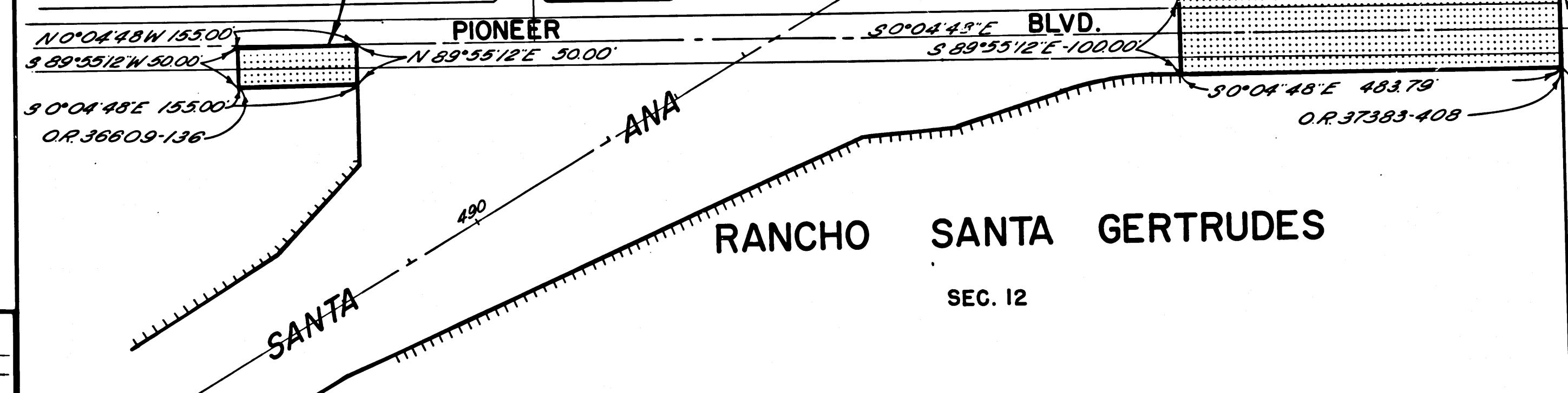
CITY OF NORWALK



TRACT NO. 15199
 M.B. 352-9

PARCEL 1

PARCEL 2



REL-594
 DRN BY M.C.
 C'LC BY M.M.
 CK'D BY G.D.M.
 BASE MAP NO'S F-2002
 REF. MAP NO'S _____
 AS BUILT NO'S _____

INTERSTATE
 STATE OF CALIFORNIA
 TRANSPORTATION AGENCY
 DEPARTMENT OF PUBLIC WORKS
 DIVISION OF HIGHWAYS
 PROPOSED RELINQUISHMENT

AREA TO BE RELINQUISHED SHOWN THUS
 ACCESS PROHIBITED

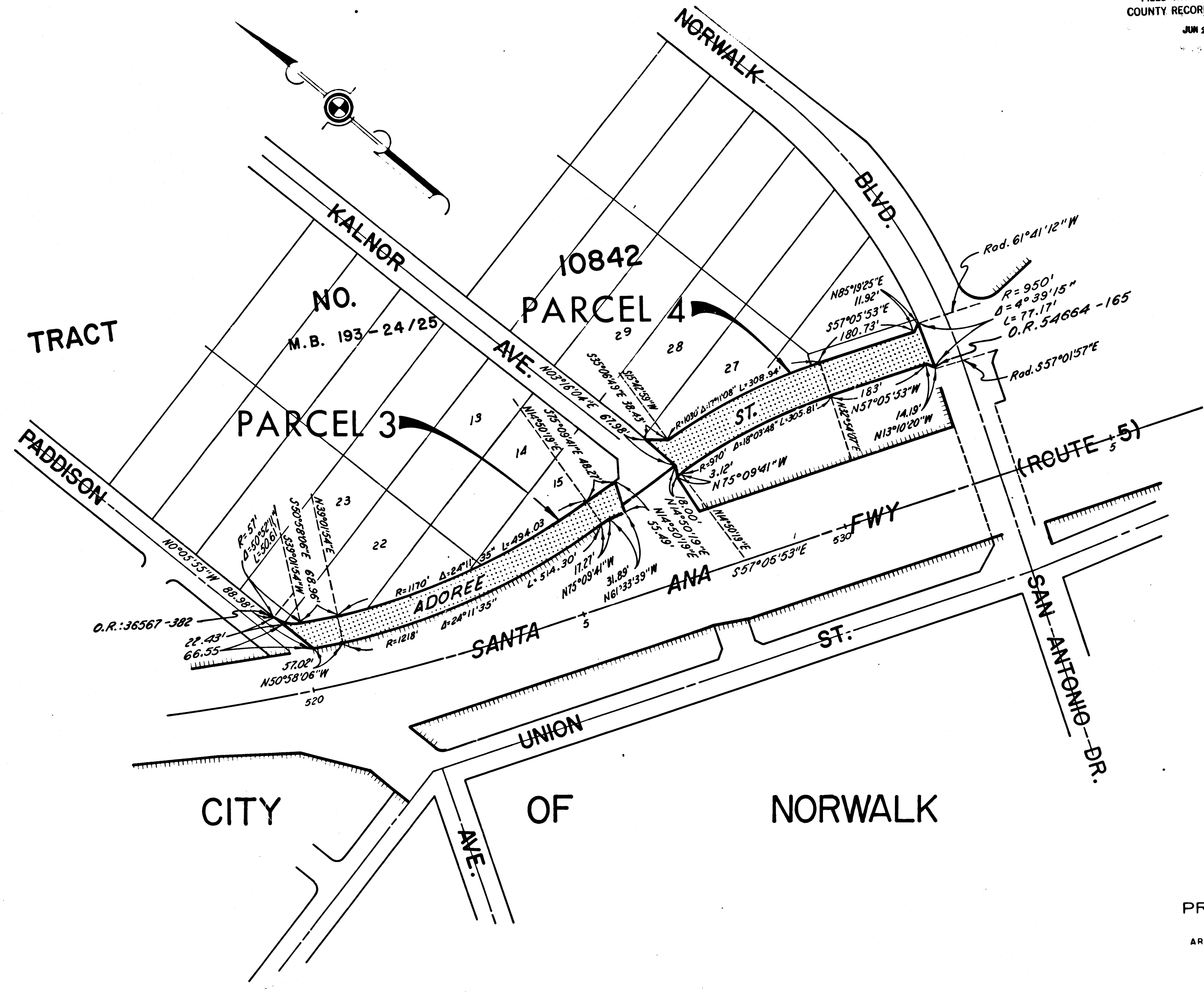


| DIST. | COUNTY | ROUTE | POST MILES | SHEET NO. | TOTAL SHEETS |
|-------|--------|-------|------------|-----------|--------------|
| 7 | LA | 5 | 24.51 | 3 | 7 |

FILED WITH LOS ANGELES COUNTY RECORDER, RAY E. LEE

JUN 23 1967

C. W. Hoy
 DEPUTY DISTRICT ENGINEER
 June 21, 1967
 DATE



REL- 594
 DRN BY M.C.
 C.L.C BY M.M.
 CKD BY G.D.W.
 BASE MAP NO'S F-2001
 REF. MAP NO'S
 AS BUILT NO'S

INTERSTATE
 STATE OF CALIFORNIA
 TRANSPORTATION AGENCY
 DEPARTMENT OF PUBLIC WORKS
 DIVISION OF HIGHWAYS
 PROPOSED RELINQUISHMENT

AREA TO BE RELINQUISHED SHOWN THUS

ACCESS PROHIBITED

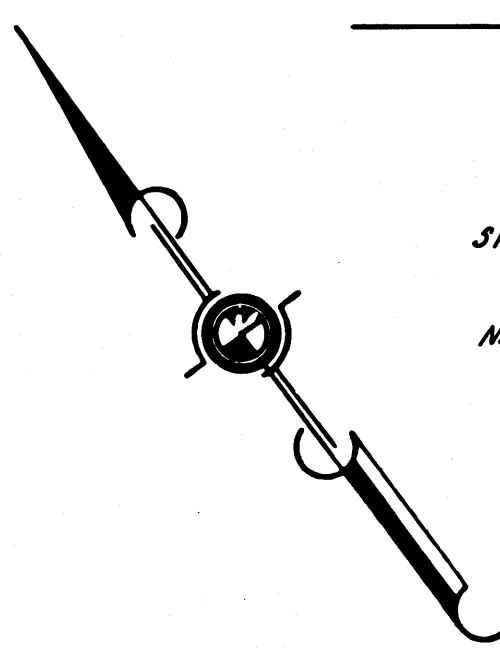
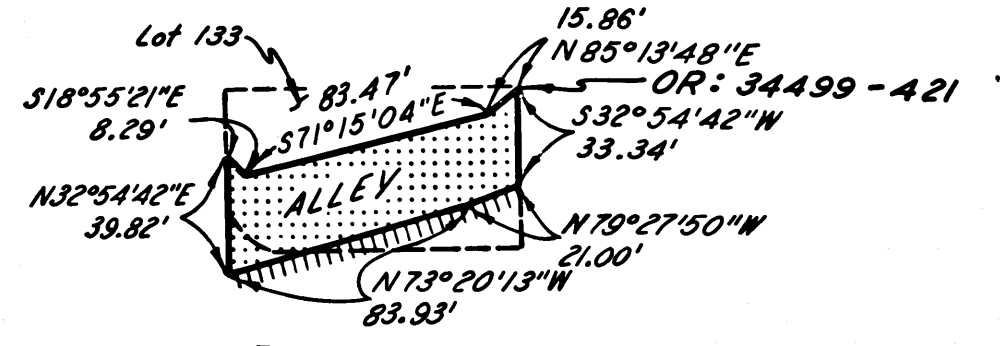
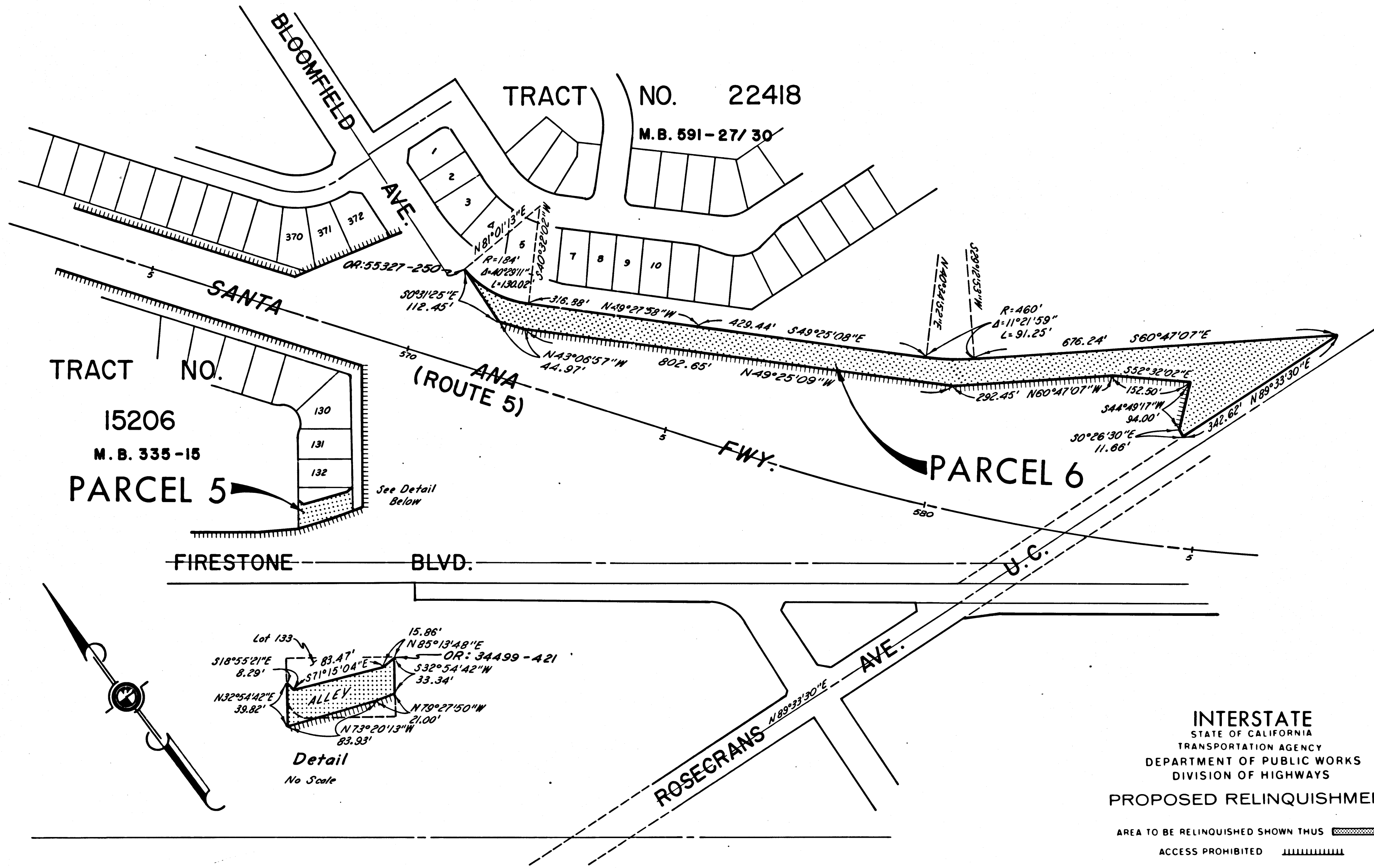
0 100 200 300 400

| DIST. | COUNTY | ROUTE | POST MILES | SHEET NO. | TOTAL SHEETS |
|-------|--------|-------|------------|-----------|--------------|
| 7 | LA | 5 | 24/5.1 | 4 | 7 |

CITY OF NORWALK

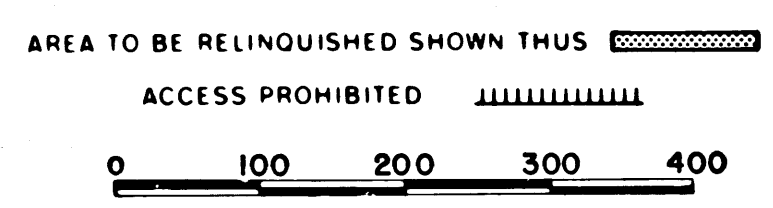
FILED WITH LOS ANGELES COUNTY RECORDER, RAY E. LEE
JUN 23 1967

Ray E. Lee
DEPUTY DISTRICT ENGINEER
DATE June 21, 1967



REL-594
DRN BY M.C.
C/LC BY M.M.
CK'D BY G.D.W.
BASE MAP NO'S
P2 5339
F-2000
REF. MAP NOS
AS BUILT NO'S

INTERSTATE
STATE OF CALIFORNIA
TRANSPORTATION AGENCY
DEPARTMENT OF PUBLIC WORKS
DIVISION OF HIGHWAYS
PROPOSED RELINQUISHMENT

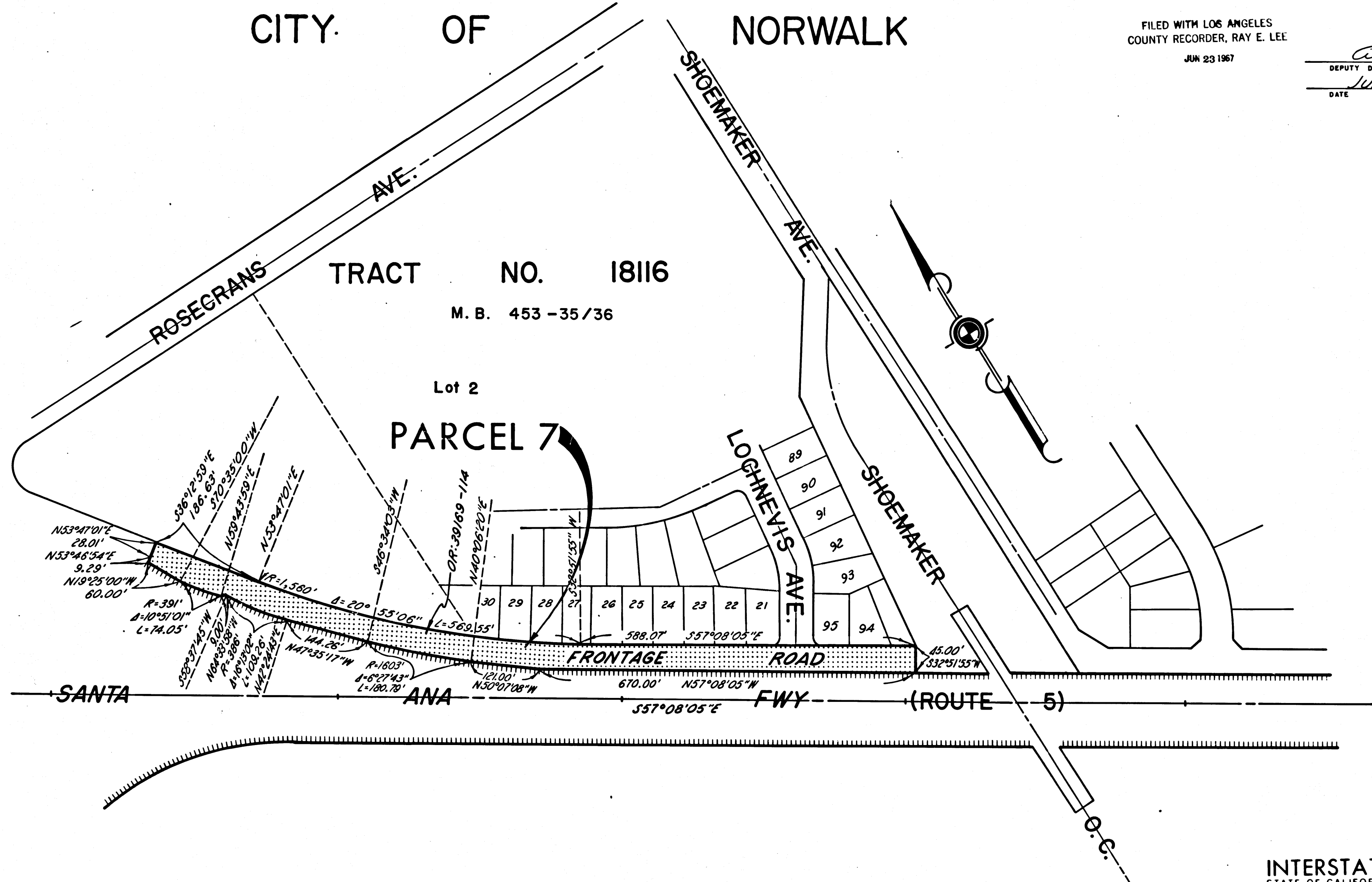


| DIST. | COUNTY | ROUTE | POST MILES | SHEET NO. | TOTAL SHEETS |
|-------|--------|-------|------------|-----------|--------------|
| 7 | CA | 5 | 2.4/5.1 | 5 | 7 |

CITY OF NORWALK

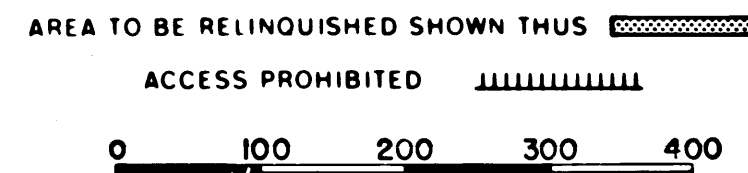
FILED WITH LOS ANGELES
COUNTY RECORDER, RAY E. LEE
JUN 23 1967

Anthony
DEPUTY DISTRICT ENGINEER
DATE June 21, 1967



REL- 594
 DRN BY M.C.
 C'LC BY M.M.
 CK'D BY G.D.W.
 BASE MAP NO'S F1999
E2000
 REF. MAP NO'S _____
 AS BUILT NO'S _____

INTERSTATE
STATE OF CALIFORNIA
TRANSPORTATION AGENCY
DEPARTMENT OF PUBLIC WORKS
DIVISION OF HIGHWAYS
PROPOSED RELINQUISHMENT

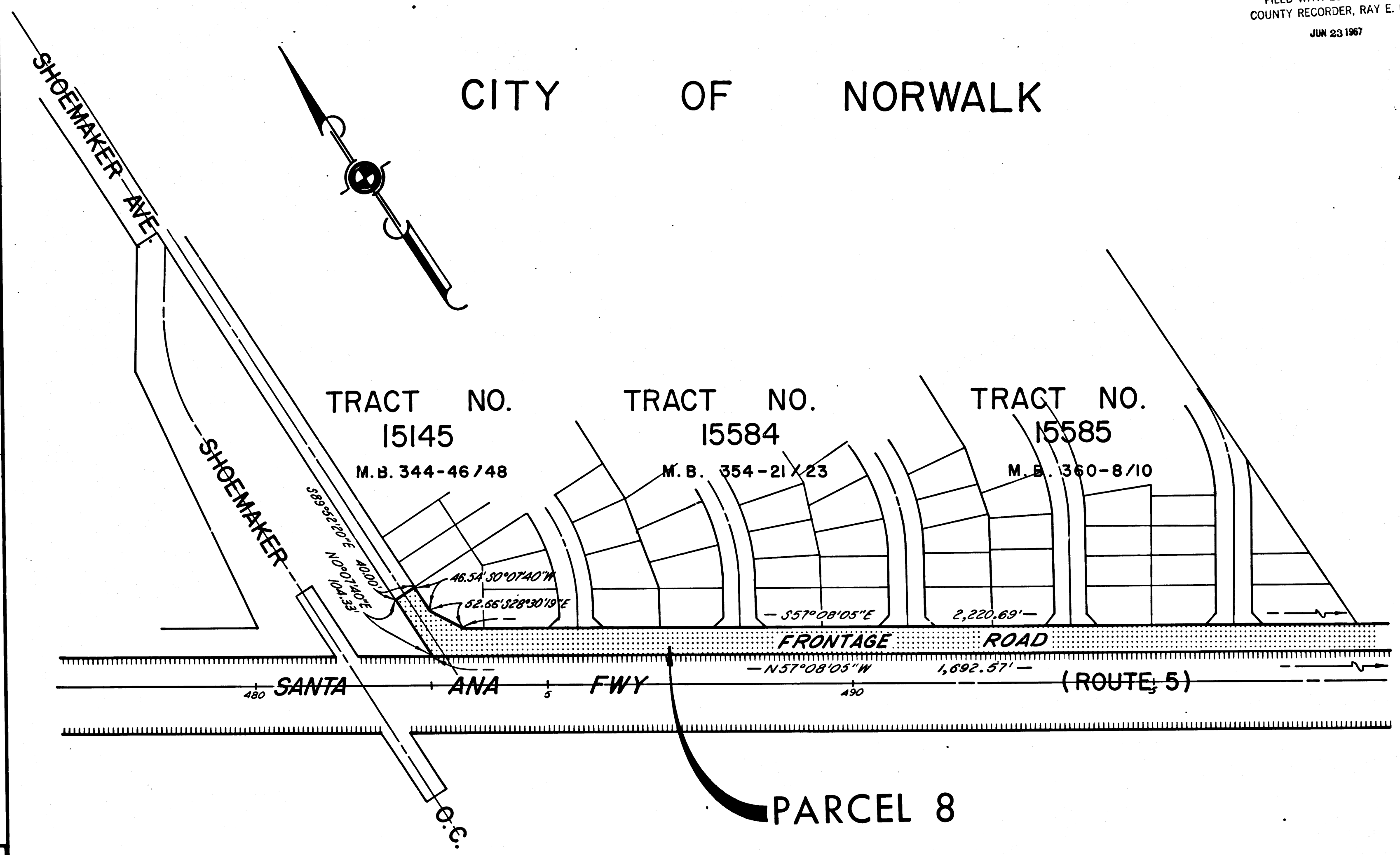


| DIST. | COUNTY | ROUTE | POST MILES | SHEET NO. | TOTAL SHEETS |
|-------|--------|-------|------------|-----------|--------------|
| 7 | LA | 5 | 24/51 | 6 | 7 |

FILED WITH LOS ANGELES
COUNTY RECORDER, RAY E. LEE
JUN 23 1967

Anthony
DEPUTY DISTRICT ENGINEER
June 21, 1967
DATE

CITY OF NORWALK



REL-594
 DWN BY *M.C.*
 C.L.C. BY *M.M.*
 CKD BY *G.D.W.*
 BASE MAP NO'S
F1899
F2000
 REF. MAP NO'S
 AS BUILT NO'S

INTERSTATE
STATE OF CALIFORNIA
TRANSPORTATION AGENCY
DEPARTMENT OF PUBLIC WORKS
DIVISION OF HIGHWAYS
PROPOSED RELINQUISHMENT

AREA TO BE RELINQUISHED SHOWN THUS

ACCESS PROHIBITED

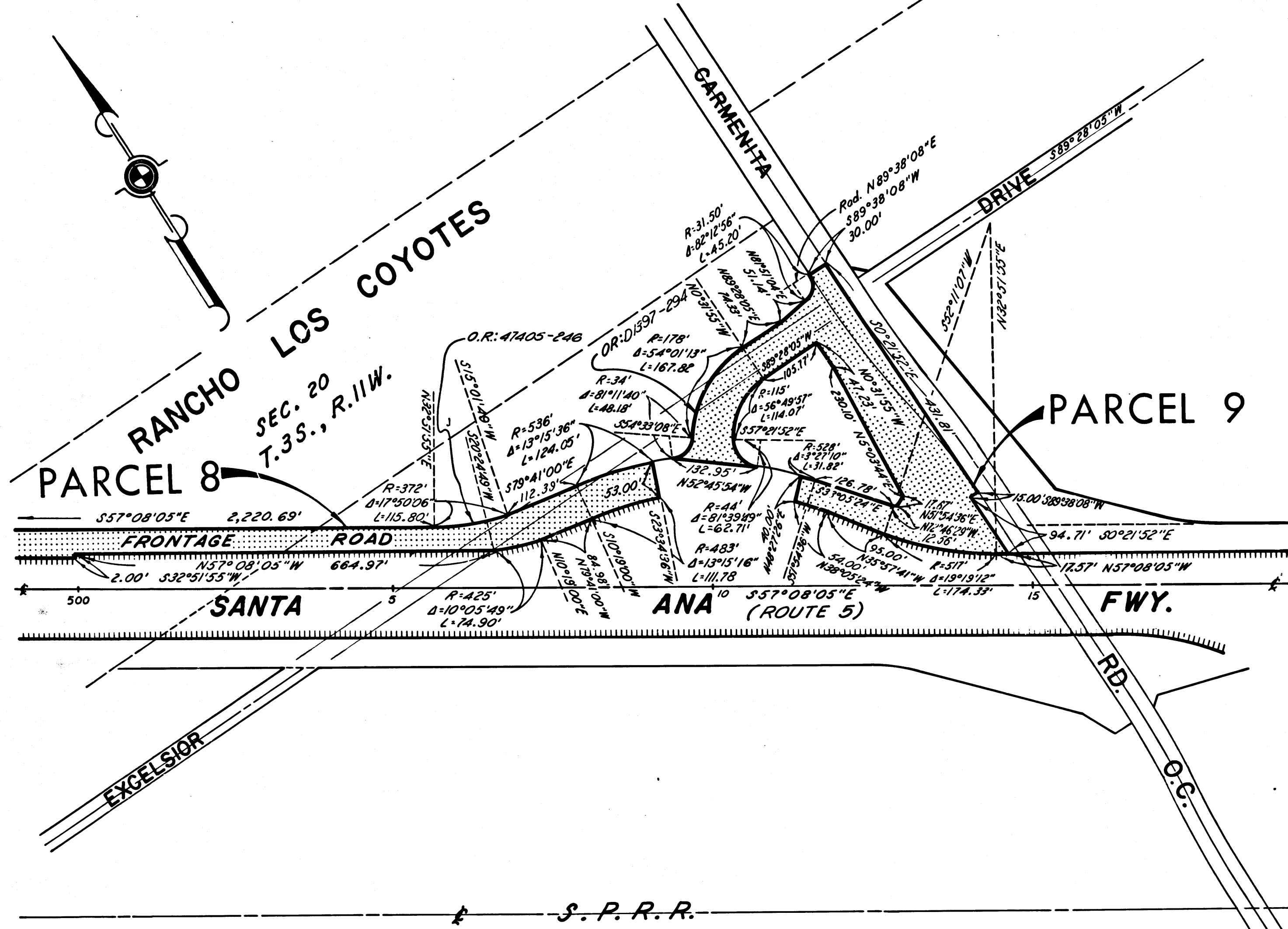
0 100 200 300 400

| DIST. | COUNTY | ROUTE | POST MILES | SHEET NO. | TOTAL SHEETS |
|-------|--------|-------|------------|-----------|--------------|
| 7 | LA | 5 | 2.4/5.1 | 7 | 7 |

FILED WITH LOS ANGELES COUNTY RECORDER, RAY E. LEE
JUN 23 1967

Anthony
DEPUTY DISTRICT ENGINEER
JUNE 21, 1967
DATE

CITY OF NORWALK



REL-594
DRN BY M.A.C.
C.L.C BY M.M.
CK'D BY G.D.W.
BASE MAP NO'S
F1999
F2000
REF. MAP NO'S
AS BUILT NO'S

INTERSTATE
STATE OF CALIFORNIA
TRANSPORTATION AGENCY
DEPARTMENT OF PUBLIC WORKS
DIVISION OF HIGHWAYS
PROPOSED RELINQUISHMENT
AREA TO BE RELINQUISHED SHOWN THUS [hatched pattern]
ACCESS PROHIBITED [dashed line pattern]
0 100 200 300 400