

BOOK 6 PAGE 8				
DIST	COUNTY	ROUTE	POST MILES	SHEET NO. TOTAL SHEETS
7	L.A.	60	15.9/19.7	1 5

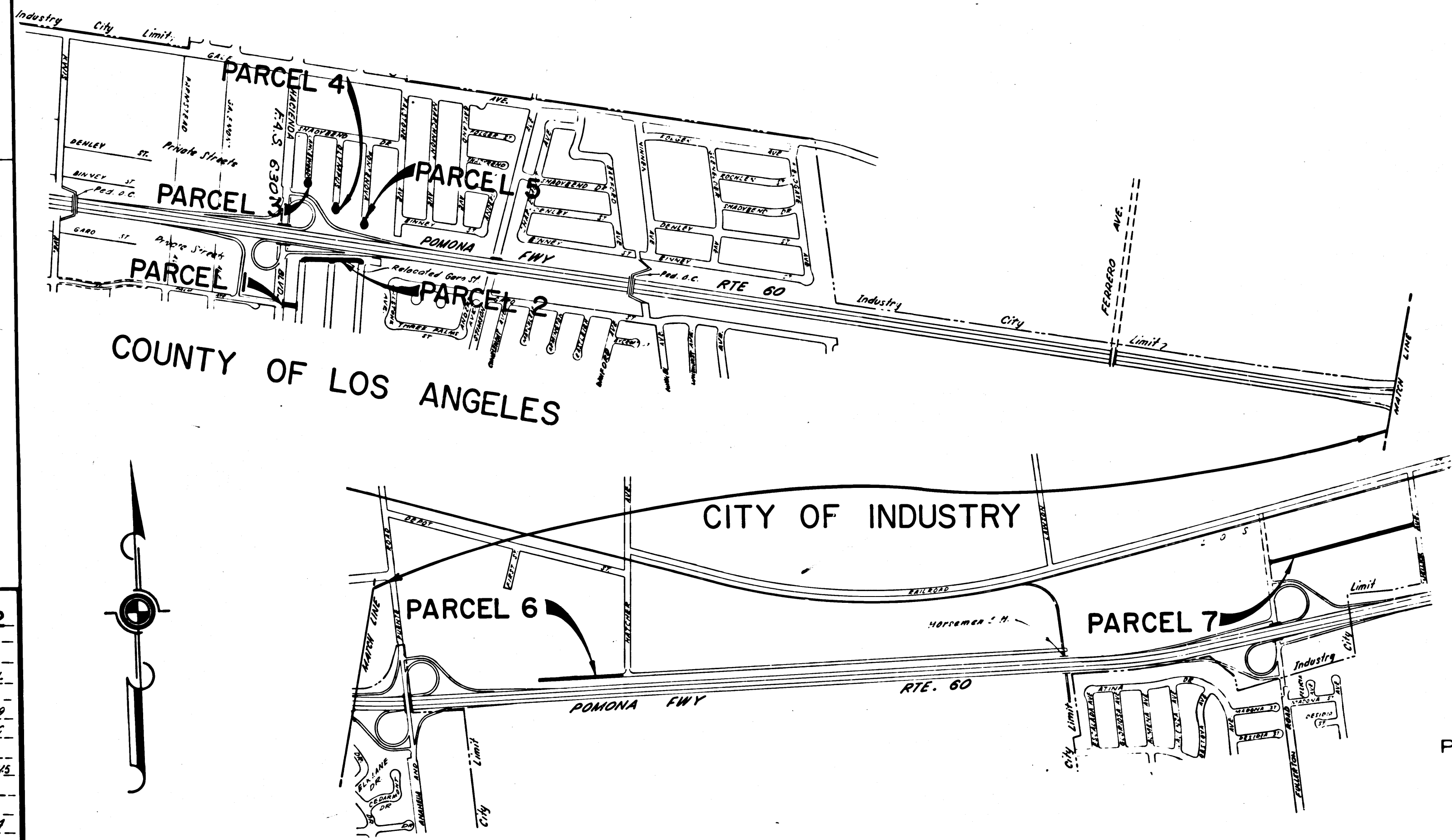
STATE OF CALIFORNIA
 TRANSPORTATION AGENCY
 DEPARTMENT OF PUBLIC WORKS
 DIVISION OF HIGHWAYS

C. A. H. H.
 DEPUTY DISTRICT ENGINEER
 July 24, 1967
 DATE

RIGHT OF WAY MAPS OF
STATE HIGHWAY

In the County of Los Angeles between
 Hacienda Blvd. and Jellick Ave.

31:77
 RECORDED
 AT REQUEST OF
 DEPT. OF PUBLIC WORKS
 JULY 27, 1967
 12 PAST 2 P.M.
 IN BOOK 6
 AT PAGE 8
 OF STATE HIGHWAY MAPS
 LOS ANGELES COUNTY, CALIF.
 RAY E. LEE
 COUNTY RECORDER
Ray E. Lee free



9/8-12
 2/12

REL-621
 REL-622
 DRN BY M.A.C.
 C.L.C. BY S.L.L.
 C.K'D BY G.D.W.
 BASE MAP NO'S
 F-1789
 F-1786
 REF. MAP NO'S
 CCM 2145
 AS BUILT NO'S
 166-4

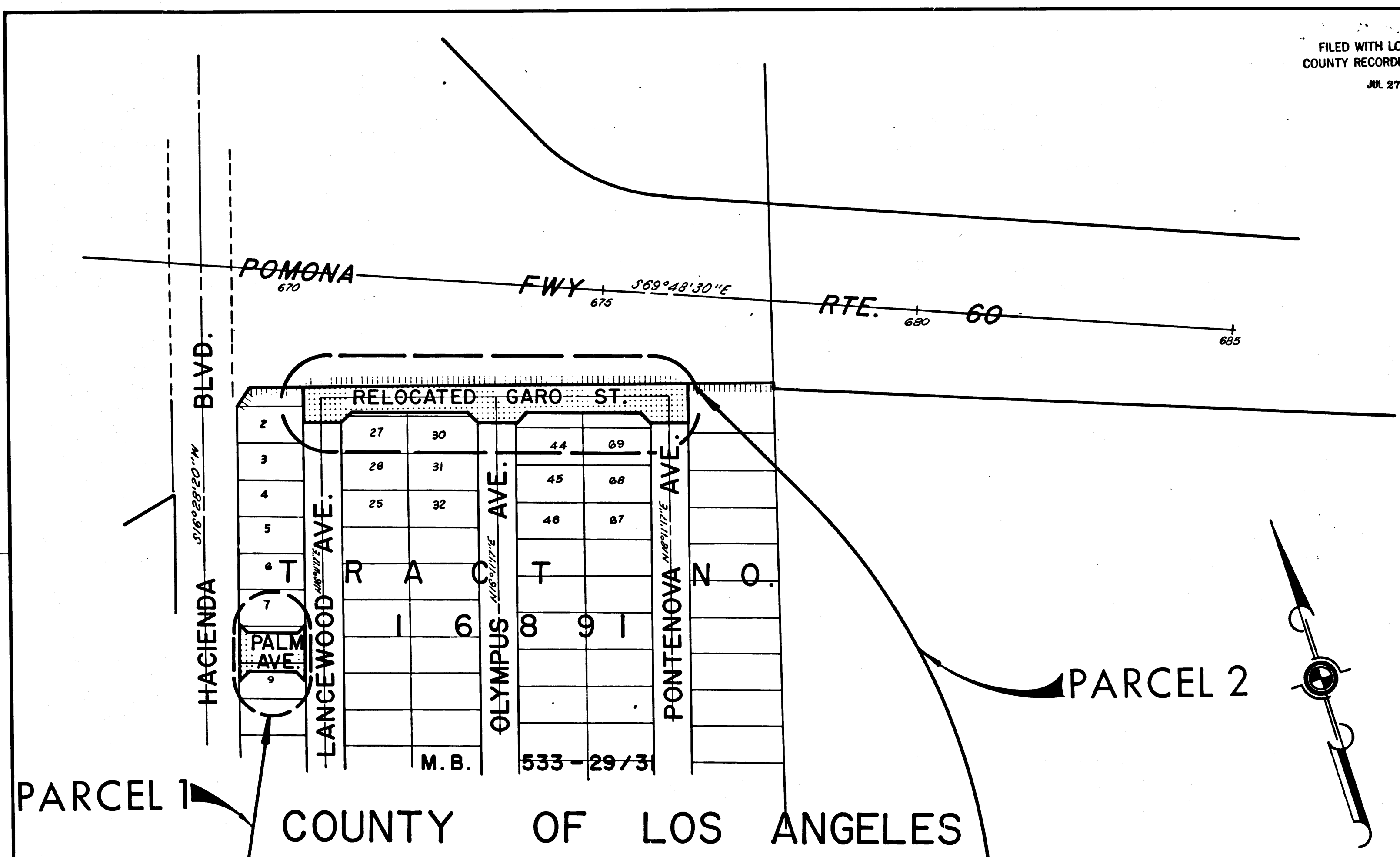
STATE OF CALIFORNIA
 TRANSPORTATION AGENCY
 DEPARTMENT OF PUBLIC WORKS
 DIVISION OF HIGHWAYS
PROPOSED RELINQUISHMENT

SCALE
 0 600 1200 1800 2400

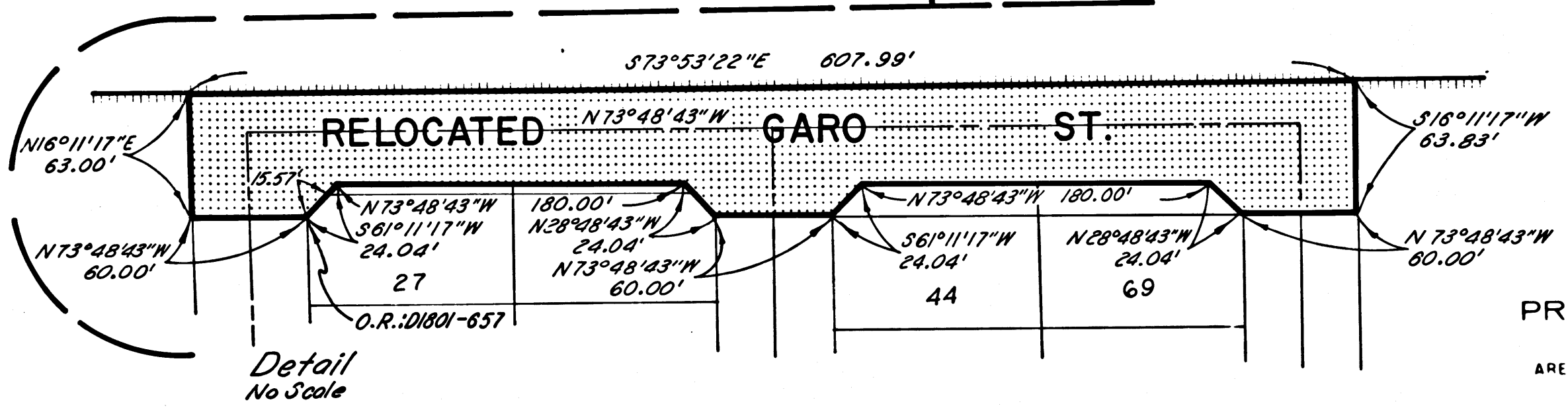
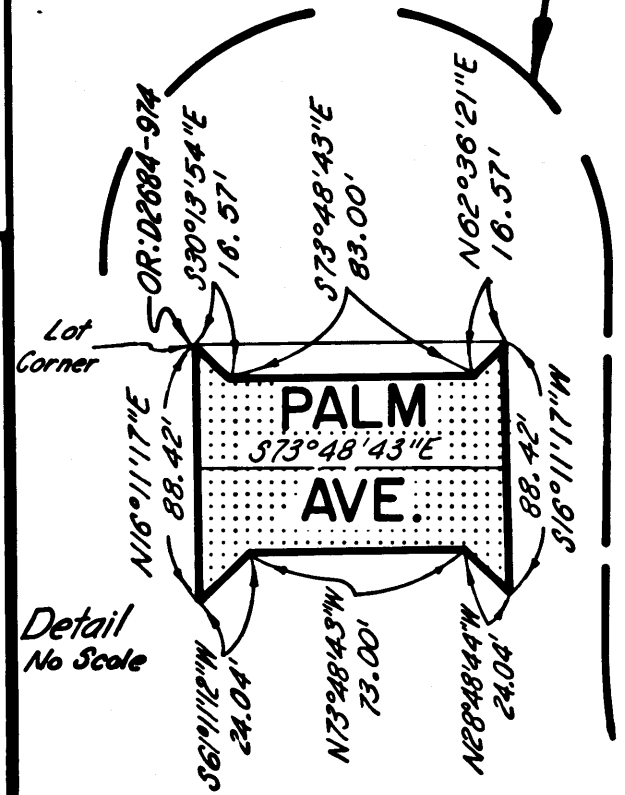
DIST.	COUNTY	ROUTE	POST MILES	SHEET NO.	TOTAL SHEETS
7	L.A.	60	15.9/19.7	2	5

FILED WITH LOS ANGELES
COUNTY RECORDER, RAY E. LEE
JUL 27 1967

C. W. Hoy
DEPUTY DISTRICT ENGINEER
July 24, 1967
DATE



621
REL-622
DR'N BY M.A.C.
C.L.C. BY S.L.T.
CK'D BY G.D.W.
BASE MAP NO'S
F-1789
REF. MAP NO'S
CCM 217.5
AS BUILT NO'S
166-4



STATE OF CALIFORNIA
TRANSPORTATION AGENCY
DEPARTMENT OF PUBLIC WORKS
DIVISION OF HIGHWAYS

PROPOSED RELINQUISHMENT

AREA TO BE RELINQUISHED SHOWN THUS

ACCESS PROHIBITED

0 100 200 300 400

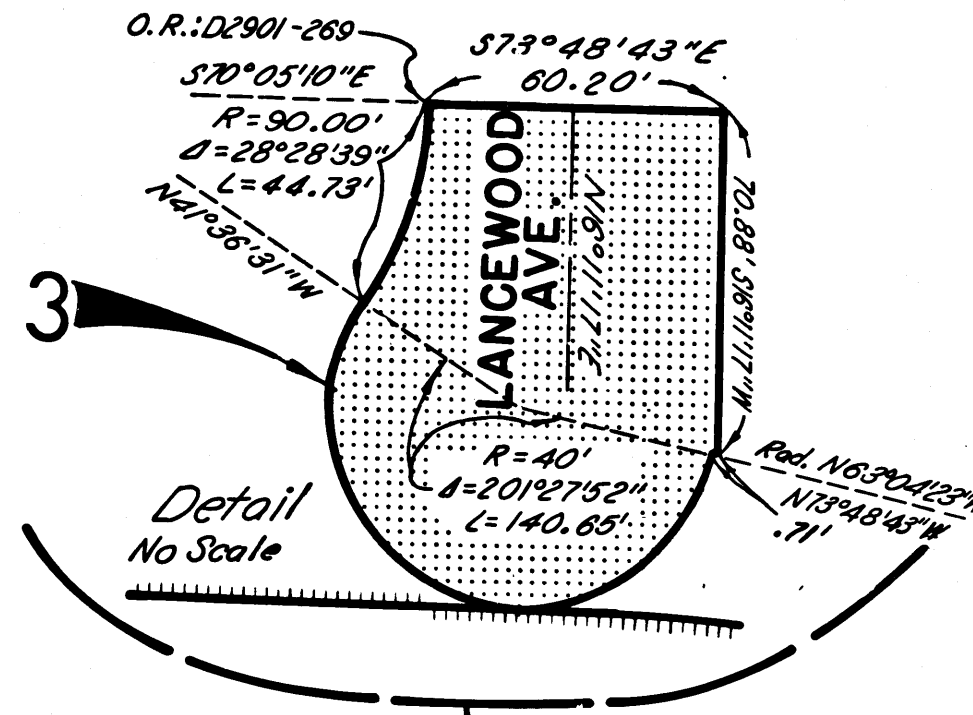
FILED WITH LOS ANGELES COUNTY RECORDER, RAY E. LEE

DIST	COUNTY	ROUTE	POST MILES	SHEET NO.	TOTAL SHEETS
7	L.A.	60	15.9/19.7	3	5

JUL 27 1967

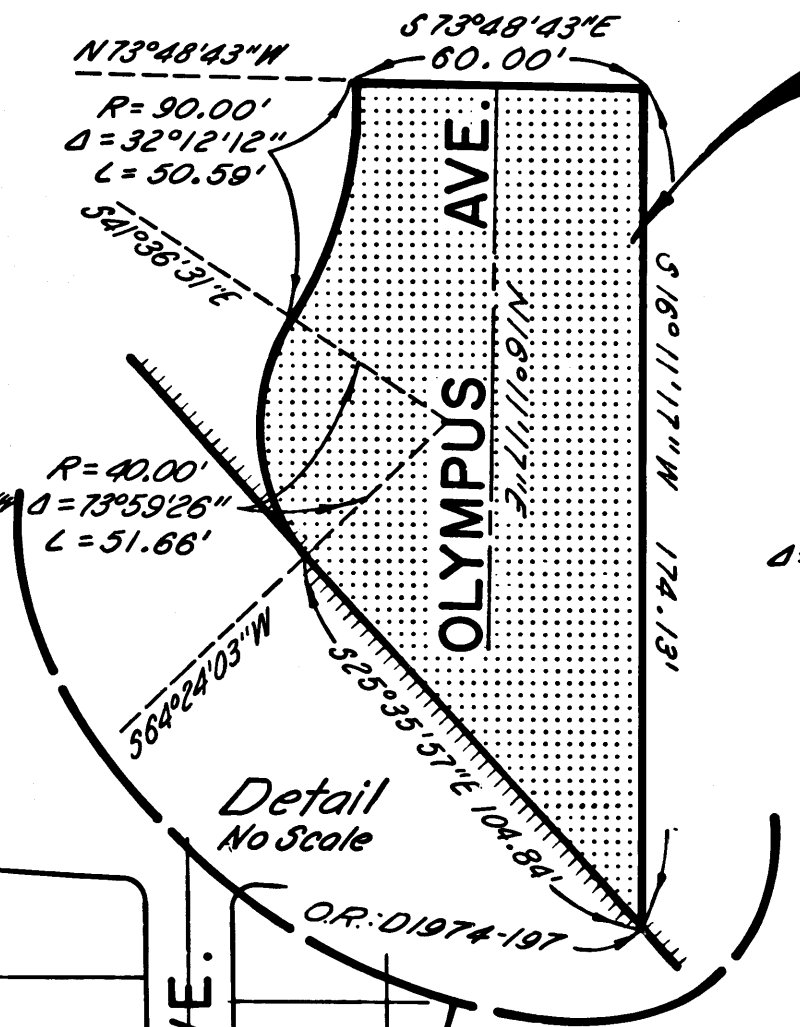
Carl H. ...
DEPUTY DISTRICT ENGINEER
July 24, 1967
DATE

PARCEL 3

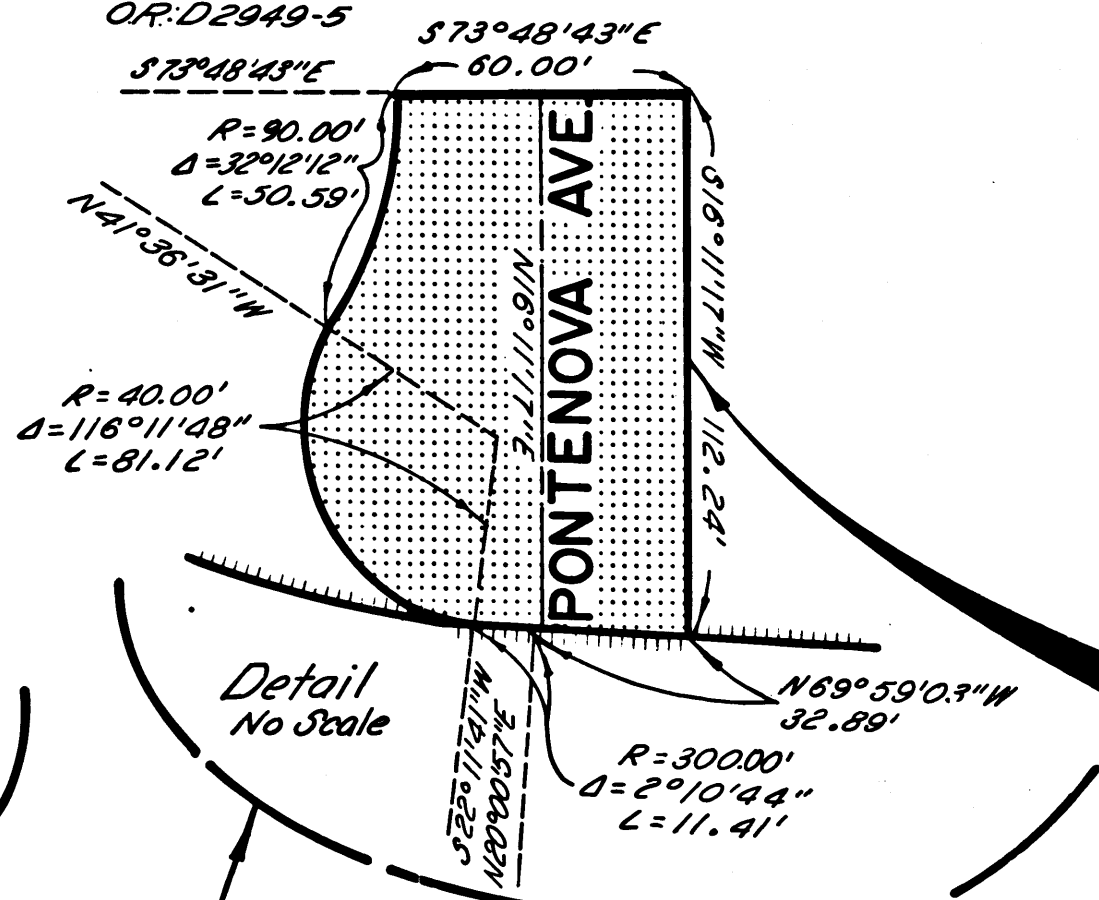


Detail
No Scale

PARCEL 4

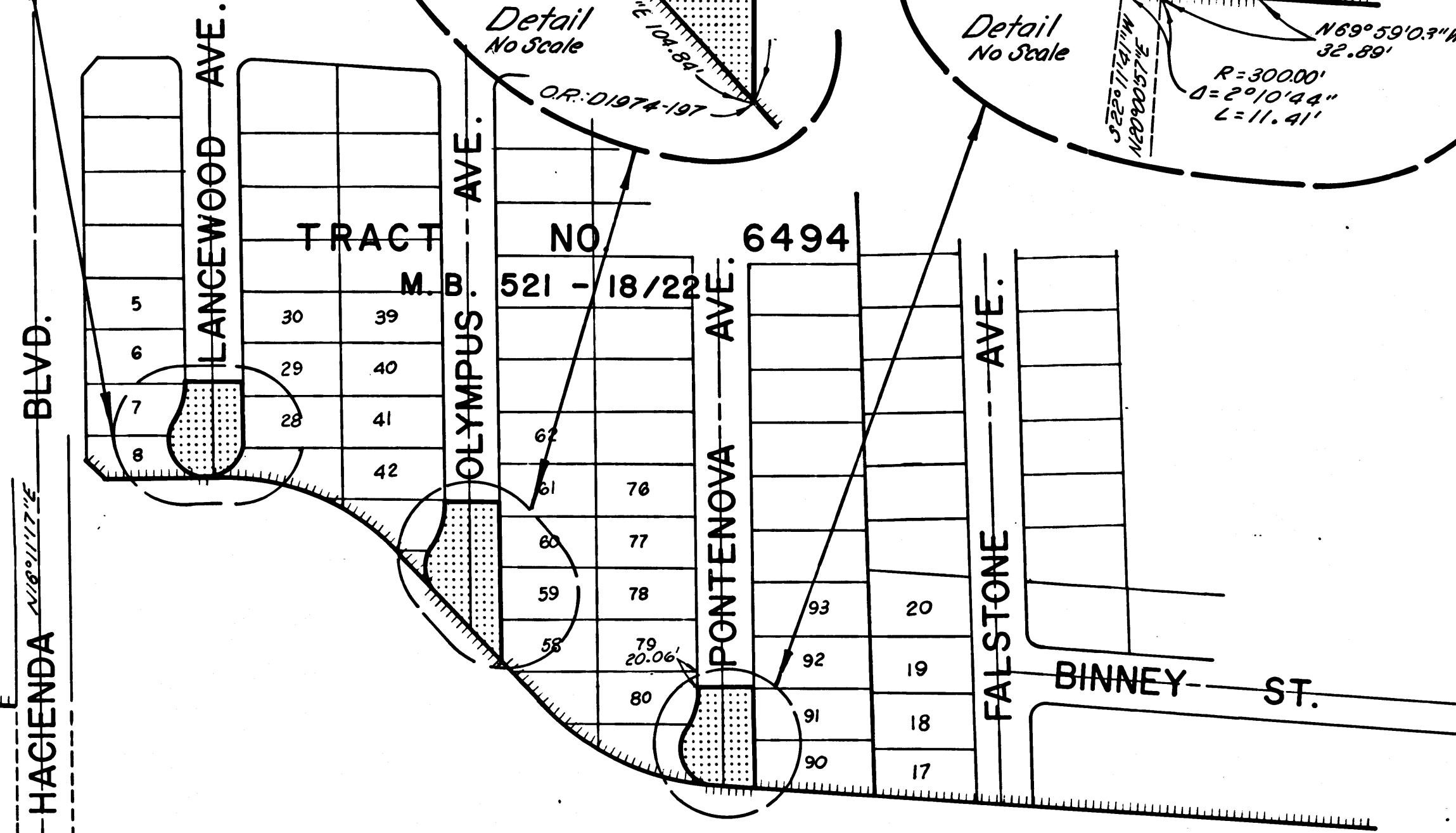
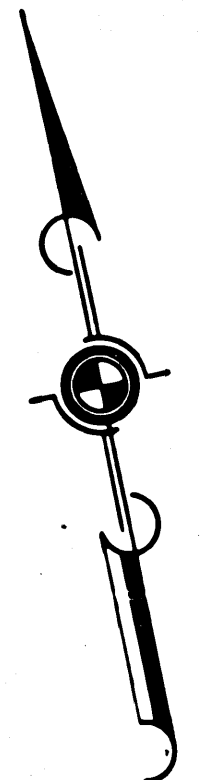


Detail
No Scale



Detail
No Scale

PARCEL 5



COUNTY OF LOS ANGELES

REL- 621
REL- 622
DRN BY M.A.C.
C.L.C. BY S.L.T.
CWD BY G.D.M.
BASE MAP NOS
F-1789
REF MAP NOS
CCM 217.5
AS BUILT NOS
168-4

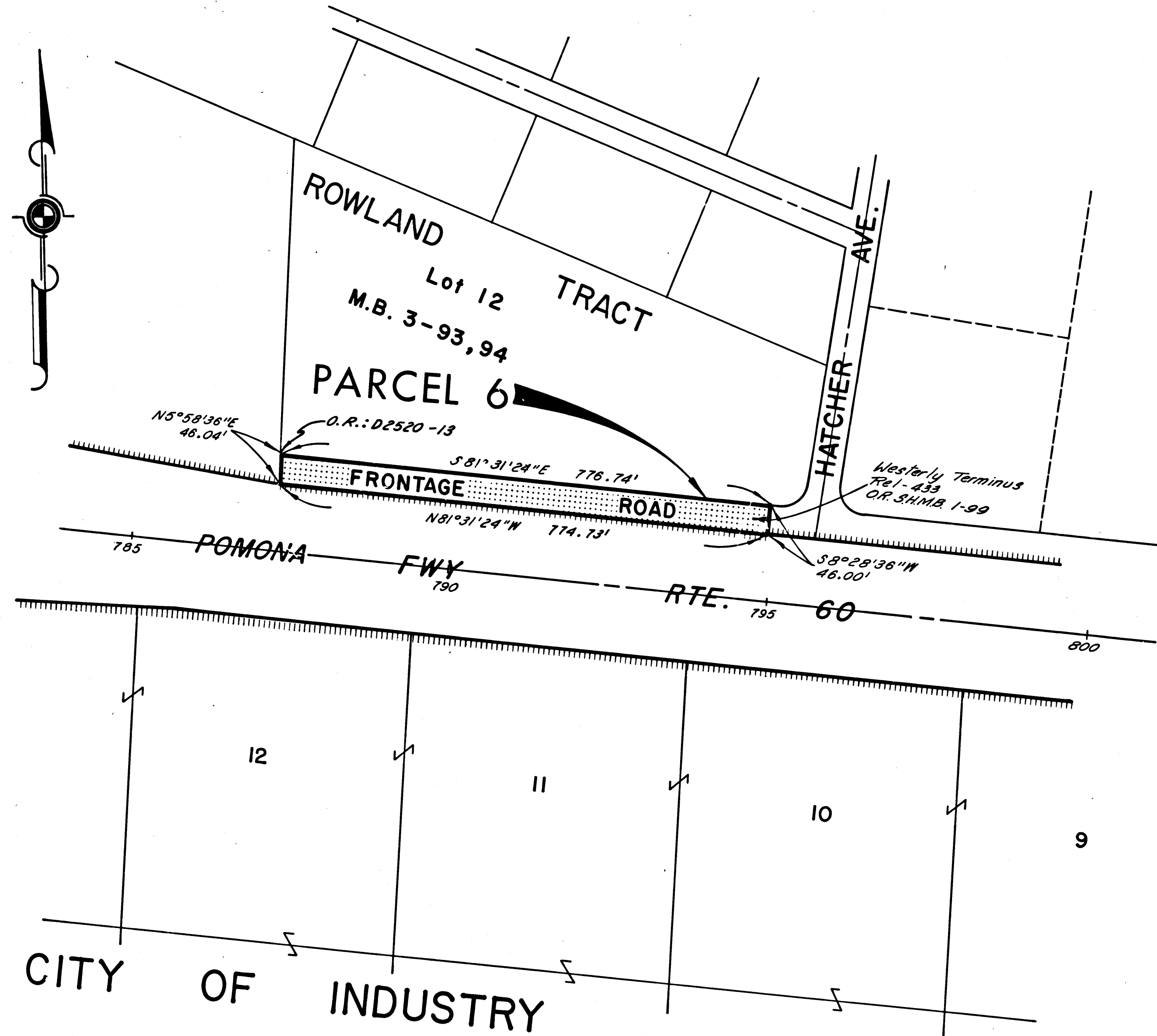
STATE OF CALIFORNIA
TRANSPORTATION AGENCY
DEPARTMENT OF PUBLIC WORKS
DIVISION OF HIGHWAYS
PROPOSED RELINQUISHMENT
AREA TO BE RELINQUISHED SHOWN THUS [shaded box]
ACCESS PROHIBITED [hatched box]
0 100 200 300 400

FILED WITH LOS ANGELES
COUNTY RECORDER, RAY E. LEE

DIST	COUNTY	ROUTE	POST MILES	SHEET NO.	TOTAL SHEETS
7	L.A.	60	15.9/19.7	4	5

JUL 27 1967

Curtis
DEPUTY DISTRICT ENGINEER
July 24, 1967
DATE



REL- 621
REL- 622
DRN BY M.A.G.
C.L.C BY S.L.T.
CK'D BY G.D.M.
BASE MAP NO'S F-1790
REF. MAP NO'S CCM 217.3
AS BUILT NO'S 168-4

STATE OF CALIFORNIA
TRANSPORTATION AGENCY
DEPARTMENT OF PUBLIC WORKS
DIVISION OF HIGHWAYS

PROPOSED RELINQUISHMENT

AREA TO BE RELINQUISHED SHOWN THUS [hatched pattern]

ACCESS PROHIBITED [dashed line pattern]

0 100 200 300 400

FILED WITH LOS ANGELES
COUNTY RECORDER, RAY E. LEE

DIST.	COUNTY	ROUTE	POST MILES	SHEET NO.	TOTAL SHEETS
7	L.A.	60	13.9/187	5	5

JUL 27 1967

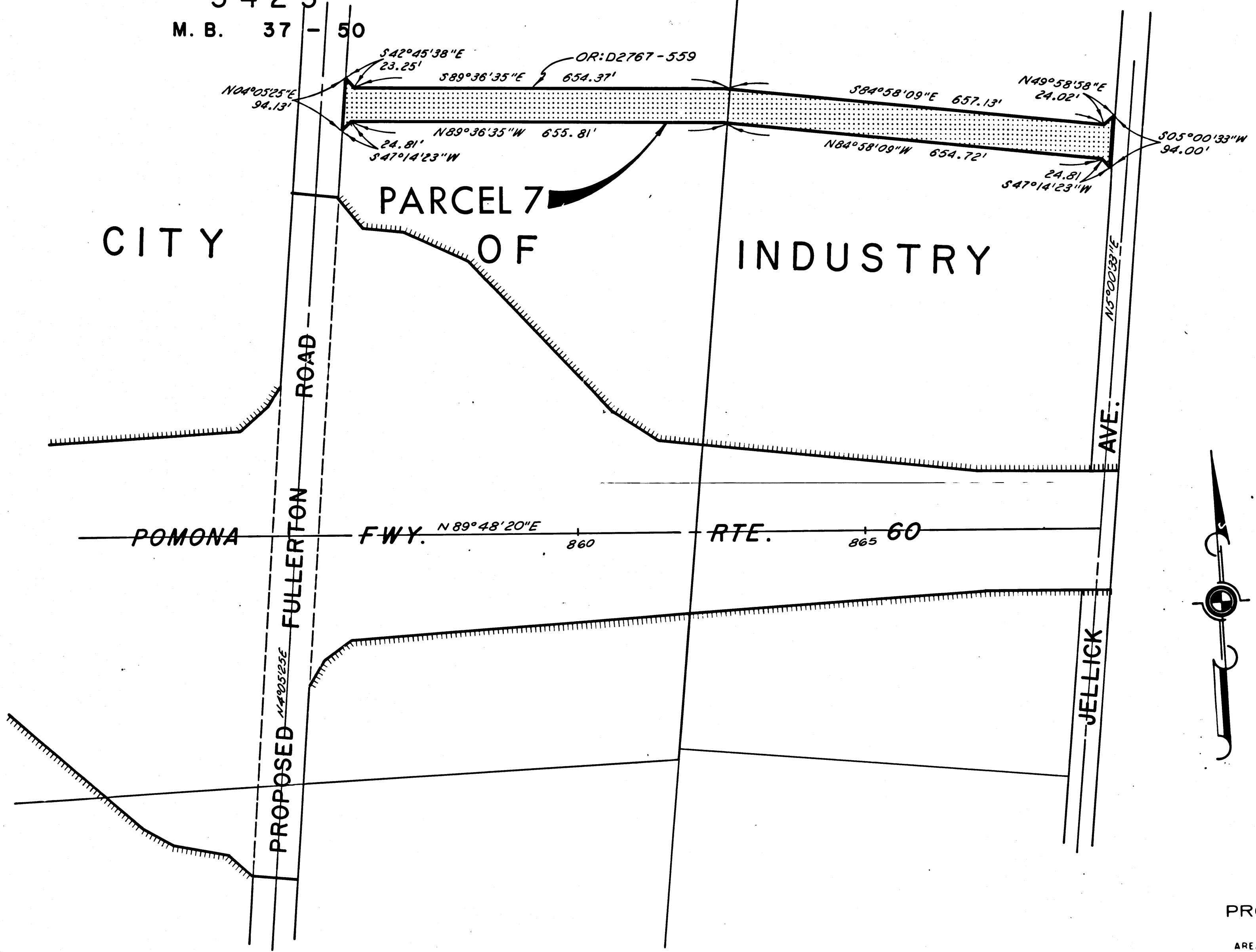
Arthur
DEPUTY DISTRICT ENGINEER
July 24, 1967
DATE

TRACT NO.
3423
M. B. 37 - 50

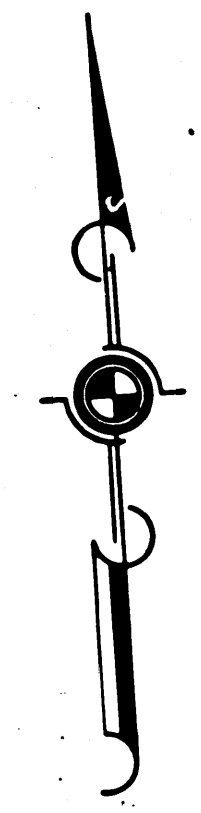
CITY

PARCEL 7
OF



INDUSTRY



621
REL-622
DRN BY M.A.C.
C/LC BY S.L.T.
CK'D BY G.D.W.
BASE MAP NO'S
F-1790
REF. MAP NO'S
CCM 217.5
AS BUILT NO'S
168-4



STATE OF CALIFORNIA
TRANSPORTATION AGENCY
DEPARTMENT OF PUBLIC WORKS
DIVISION OF HIGHWAYS
PROPOSED RELINQUISHMENT

AREA TO BE RELINQUISHED SHOWN THUS 
ACCESS PROHIBITED 
0 100 200 300 400