

BOOK 6		PAGE 13			
DIST.	COUNTY	ROUTE	POST MILES	SHEET NO.	TOTAL SHEETS
7	LA	405	24.5	1	1

STATE OF CALIFORNIA  
 TRANSPORTATION AGENCY  
 DEPARTMENT OF PUBLIC WORKS  
 DIVISION OF HIGHWAYS

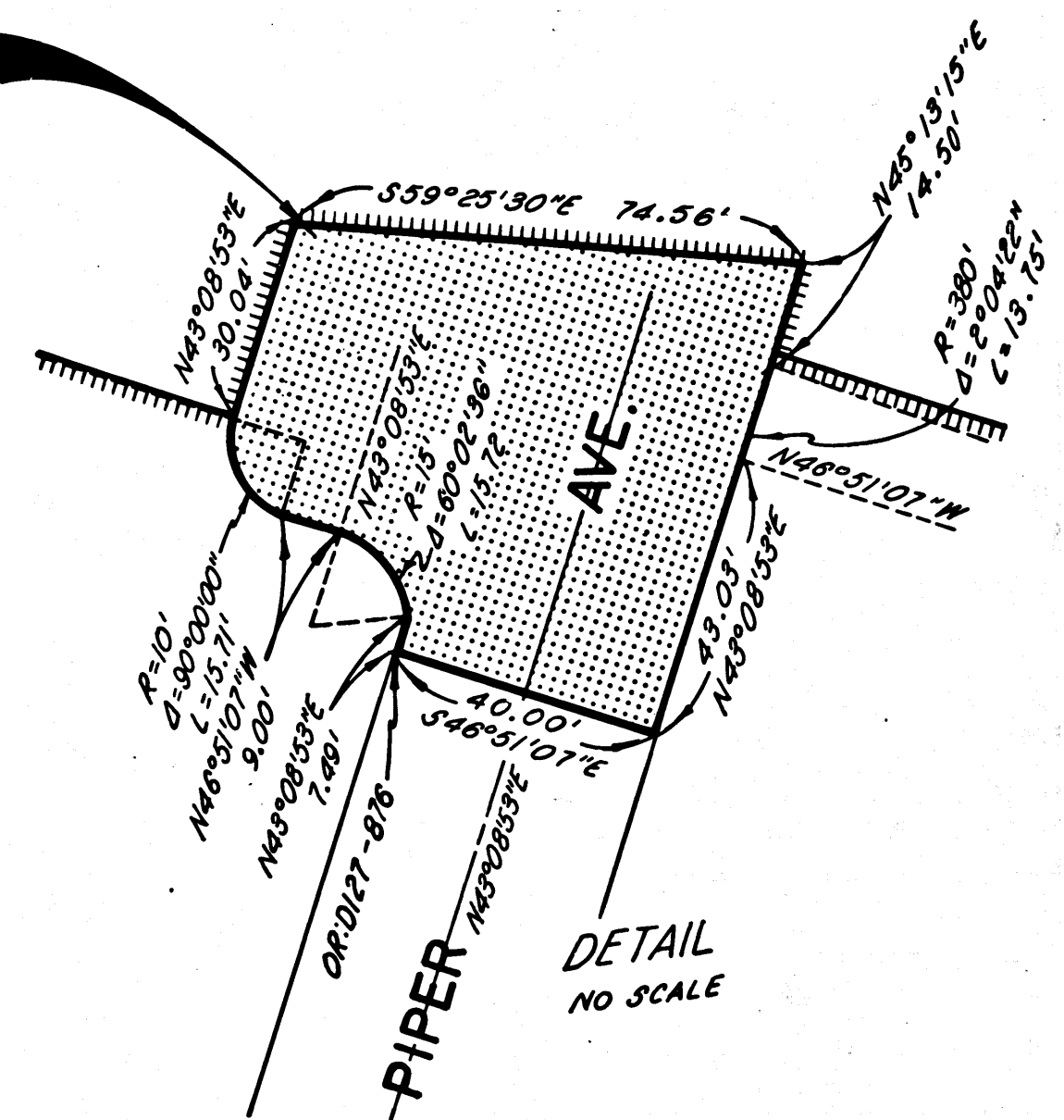
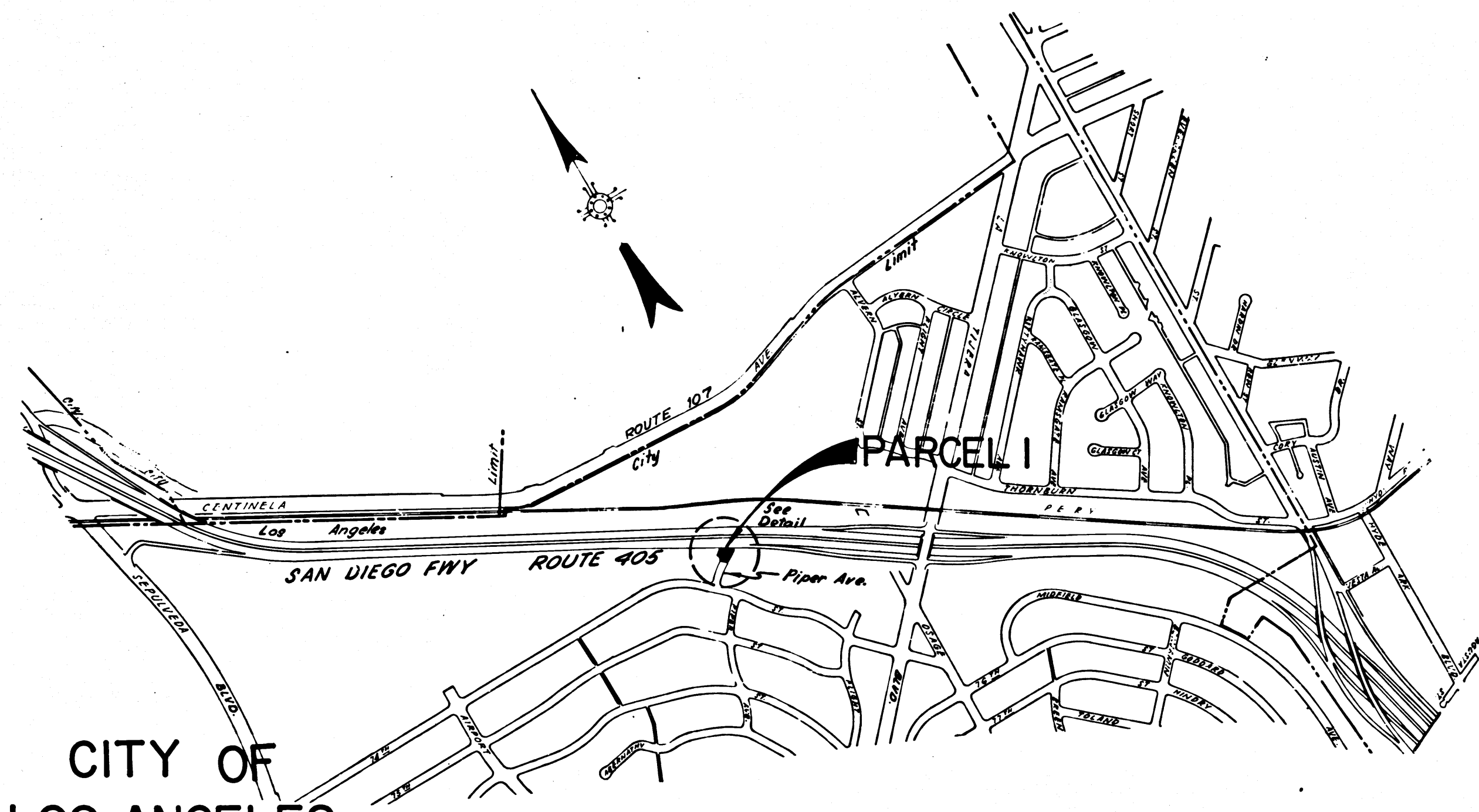
*C. W. A. H. G.*  
 DEPUTY DISTRICT ENGINEER  
 DATE August 4, 1967

RIGHT OF WAY MAPS OF  
**STATE HIGHWAY**

3171  
 RECORDED  
 AT REQUEST OF  
 DEPT. OF PUBLIC WORKS  
 AUG. 9, 1967  
 2 MIN.  
 PAST 2 P.M.  
 IN BOOK 6  
 AT PAGE 13  
 OF STATE HIGHWAY MAPS  
 LOS ANGELES COUNTY, CALIF.  
 RAY E. LEE  
 COUNTY RECORDER  
 BY *[Signature]*  
 Deputy

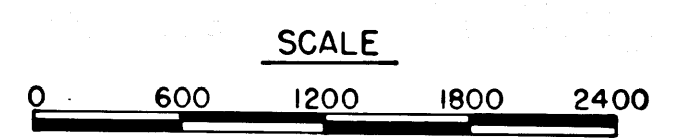
On Route 405 at Piper Ave.

PARCEL I



DETAIL  
 NO SCALE

INTERSTATE  
 STATE OF CALIFORNIA  
 TRANSPORTATION AGENCY  
 DEPARTMENT OF PUBLIC WORKS  
 DIVISION OF HIGHWAYS  
 PROPOSED RELINQUISHMENT



REL-627  
 DRN BY M.A.C.  
 C.L.C. BY D.L.P.  
 CK'D BY S.L.T.  
 BASE MAP NO'S F1927  
 REF. MAP NO'S  
 AS BUILT NO'S 151-16

CITY OF  
 LOS ANGELES